

8

7

6

5

4

3

2

1

H

H

G

G

F

F

E

E

D

D

C

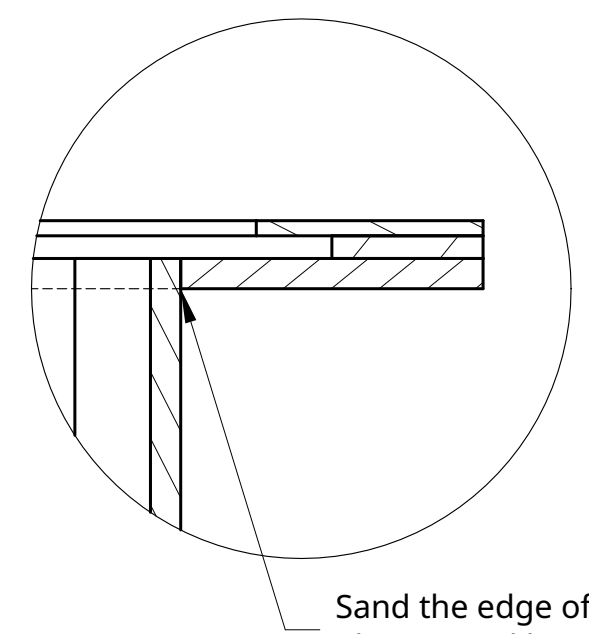
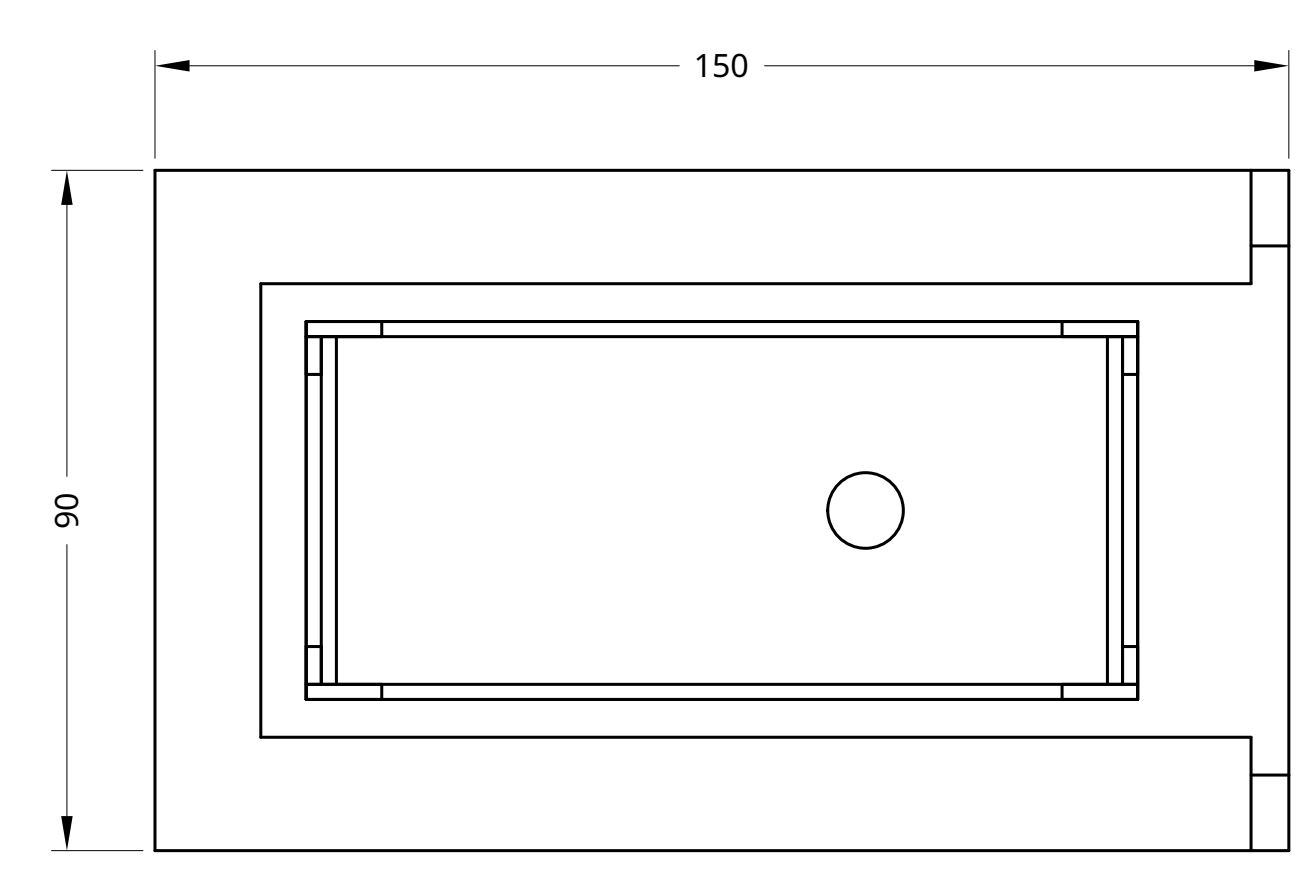
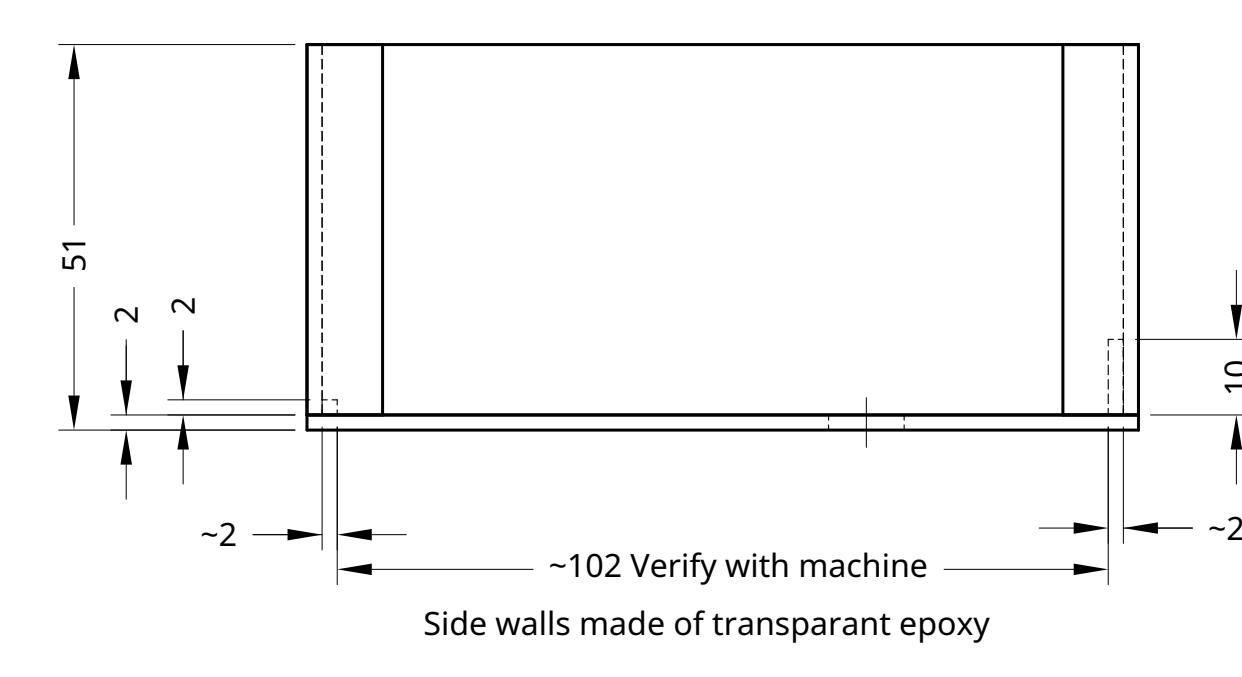
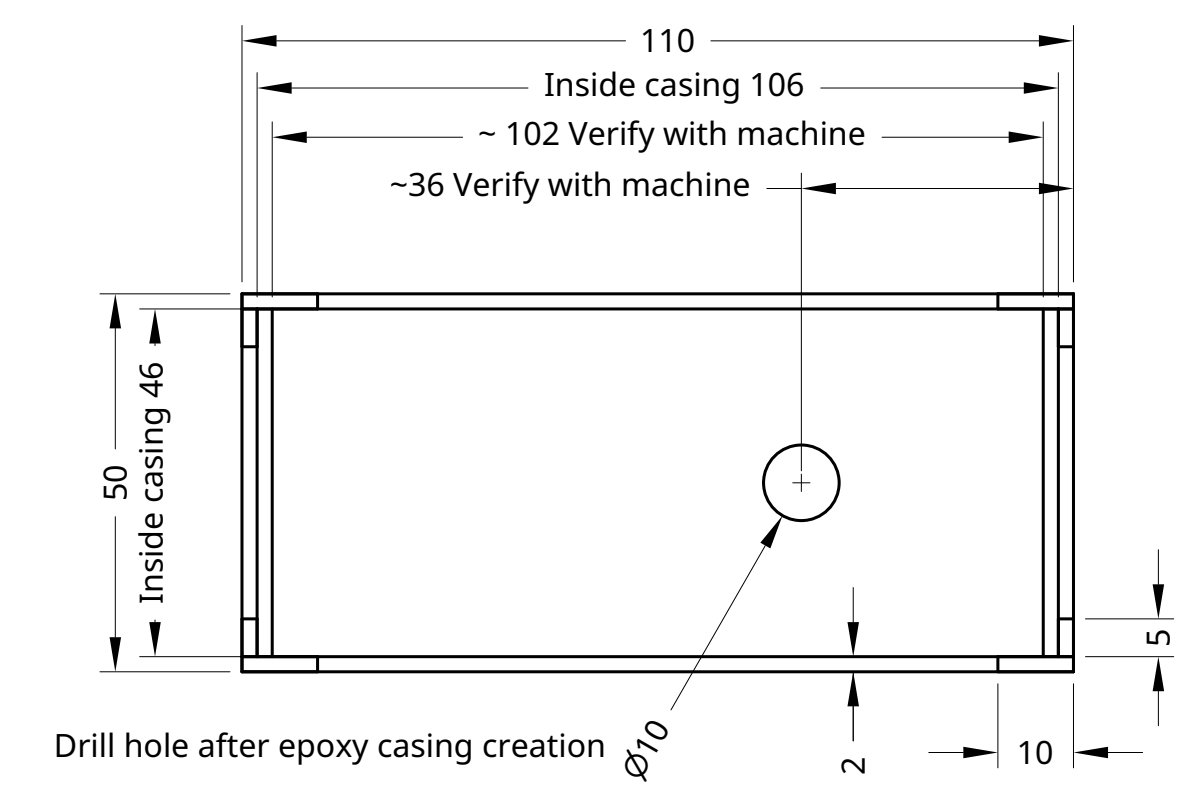
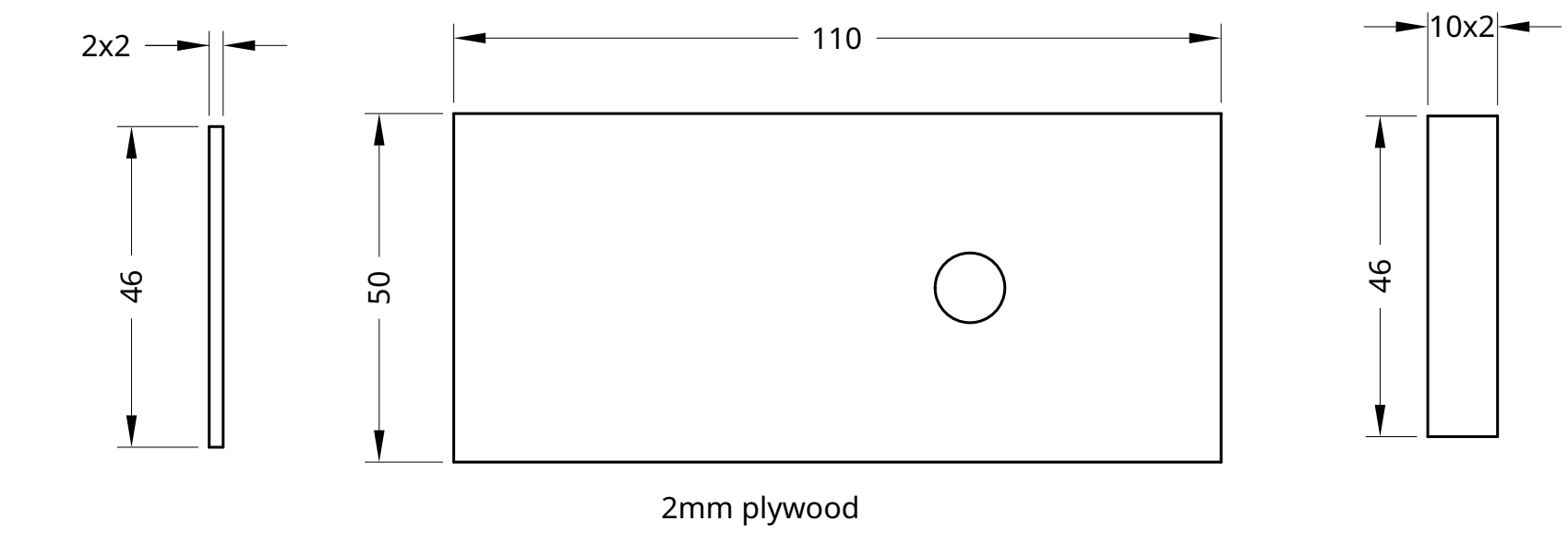
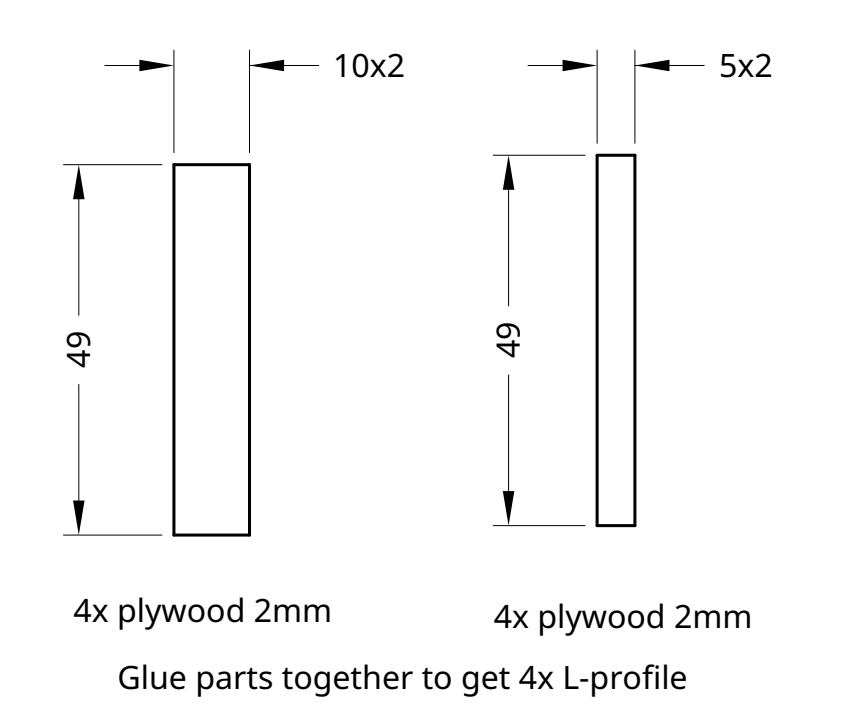
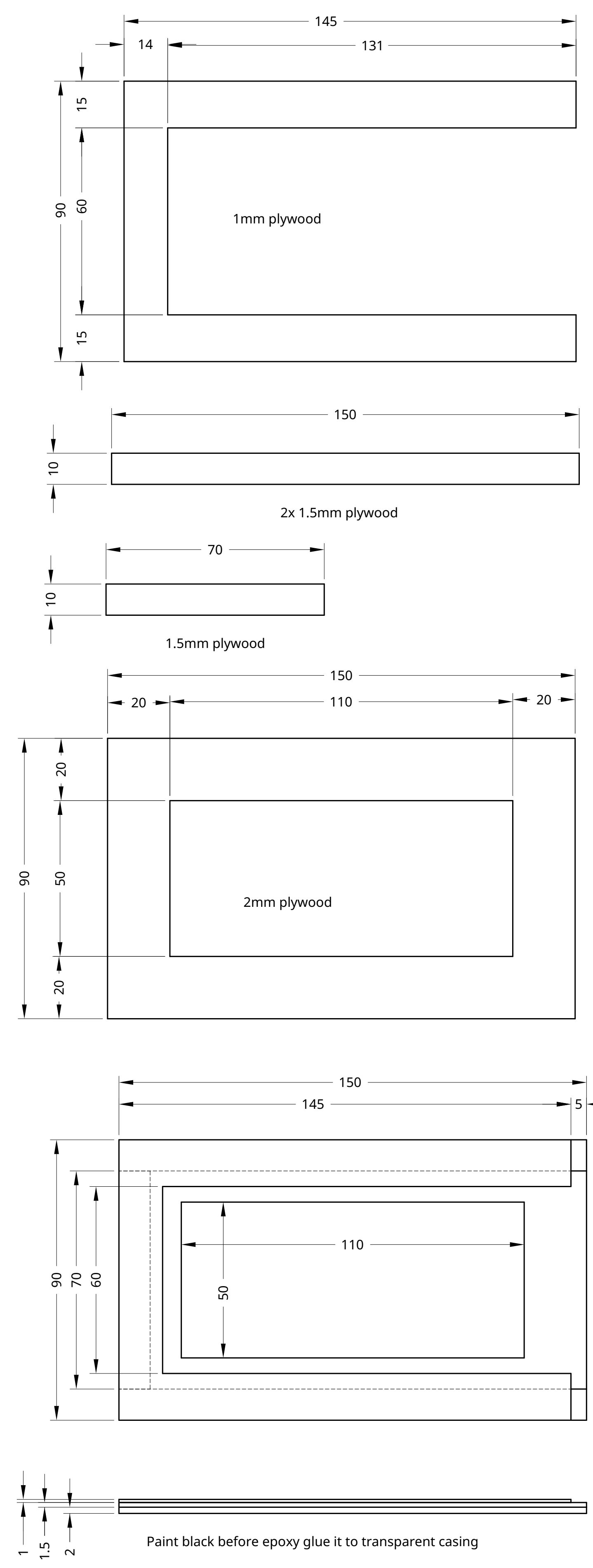
C

B

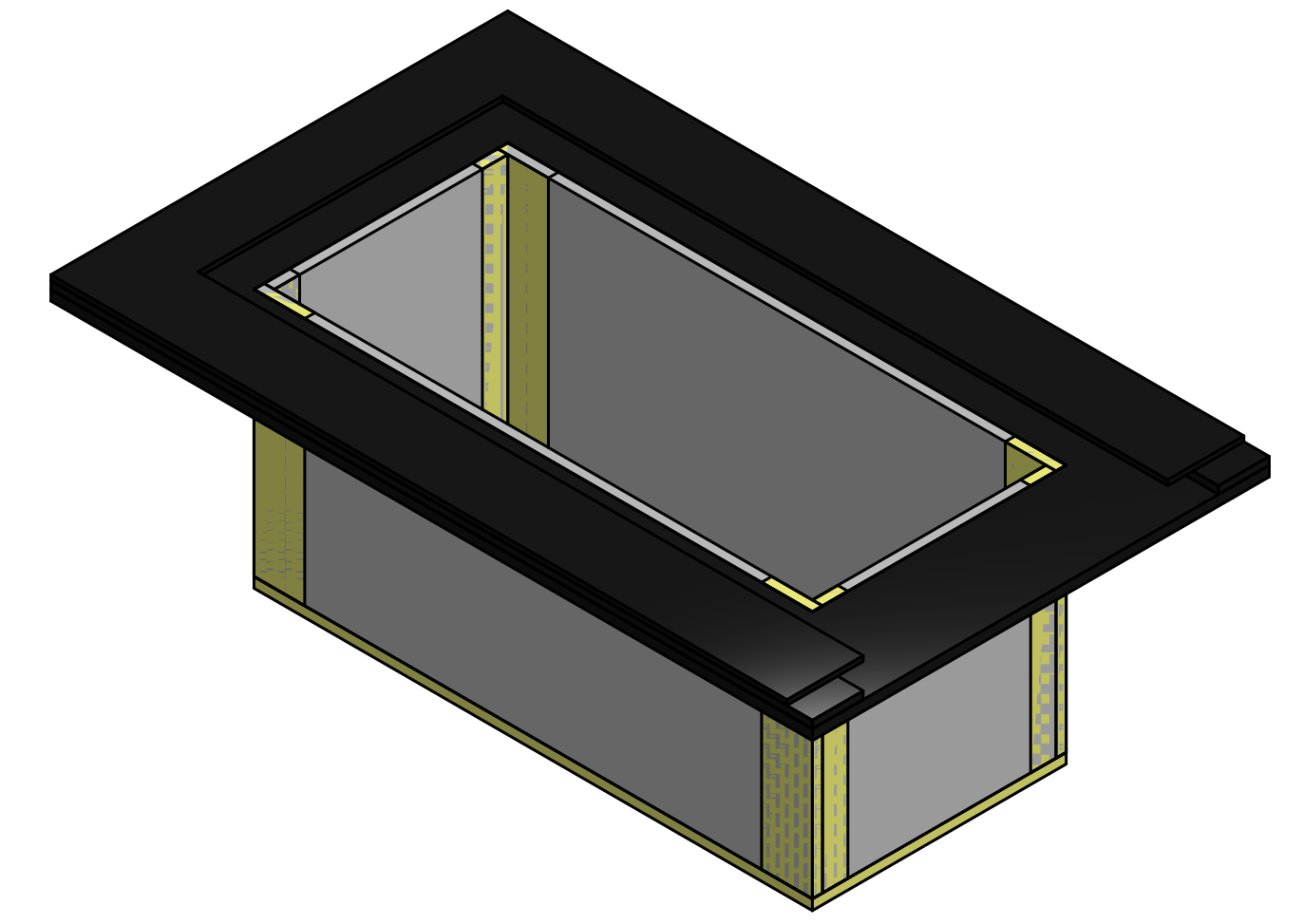
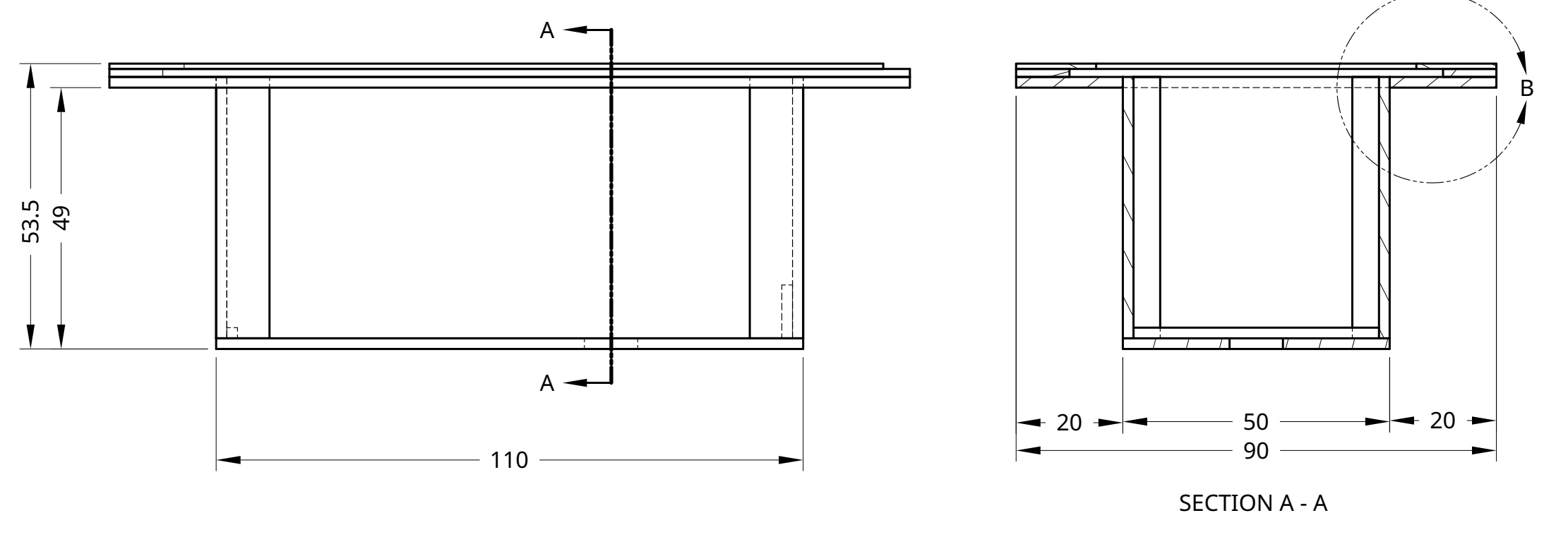
B

A

A



Sand the edge of the transparent box.  
The top and bottom should fit with little pressure.



Epoxy glue black painted top and transparent bottom together.  
See for epoxy casing instructable: <http://www.instructables.com/id/Transparent-Epoxy-Box-Casing/>

UNLESS OTHERWISE SPECIFIED, DIMENSIONS ARE IN MILLIMETERS		NAME	DATE		
DRAWN		Ben1998	12/31/2017		
CHECKED				TITLE	
APPROVED				01 Casing	
DO NOT SCALE DRAWING				Fish Feeder 2	
BREAK ALL SHARP EDGES AND REMOVE BURRS				SIZE	DWG NO.
THIRD ANGLE PROJECTION		MATERIAL	FINISH	D	-
				SCALE	1:1
				WEIGHT	
				SHEET	1 of 1

8

7

6

5

4

3

2

1