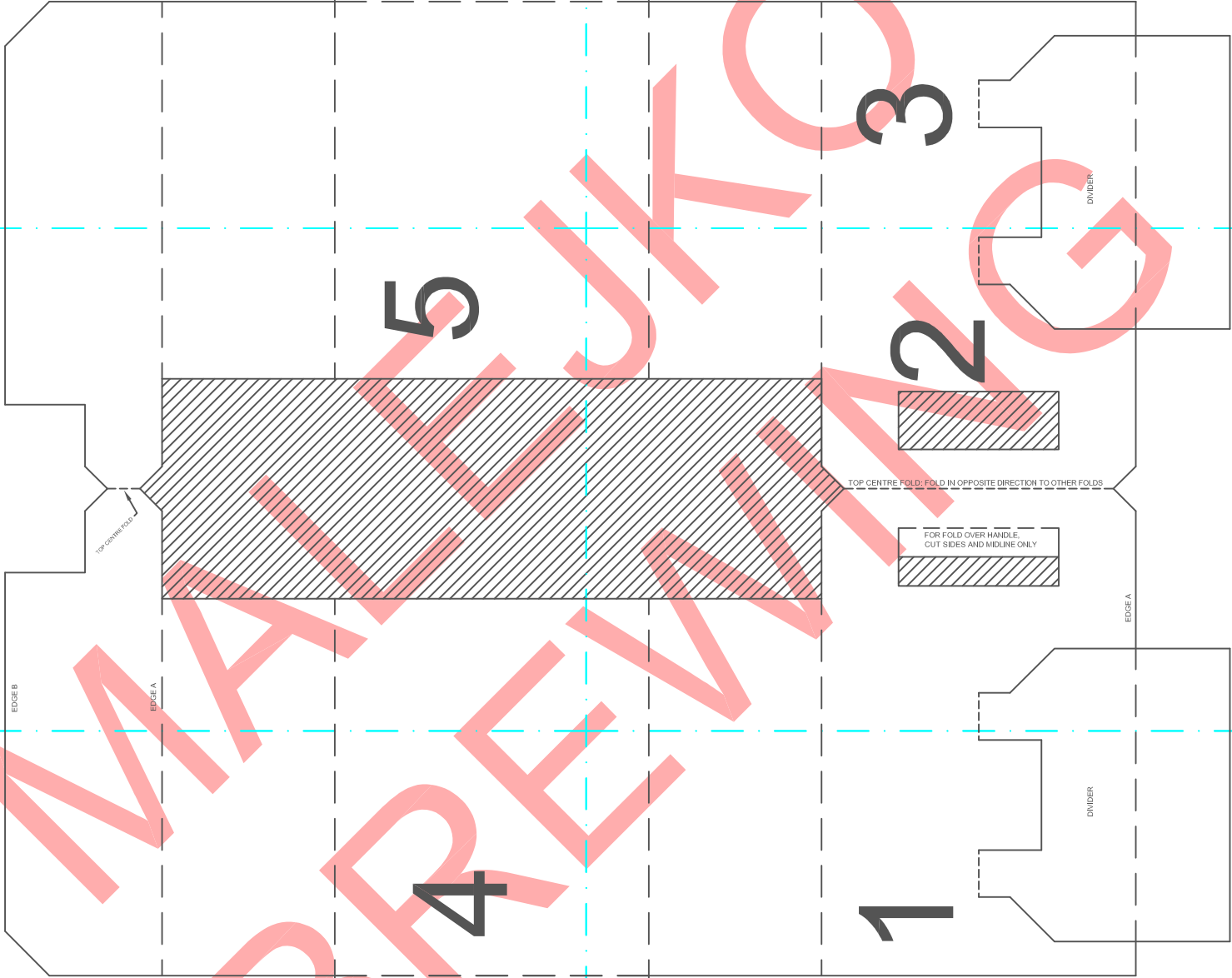


- FOLD LINES
- CUT LINES
- CUT OUT SHADED AREAS

6
BOTTOM



3

5

2

TOP CENTRE FOLD: FOLD IN OPPOSITE DIRECTION TO OTHER FOLDS

FOR FOLD OVER HANDLE:
CUT SIDES AND MIDLINE ONLY

TOP DOWN FOLD

EDGE B

EDGE A

EDGE A

4

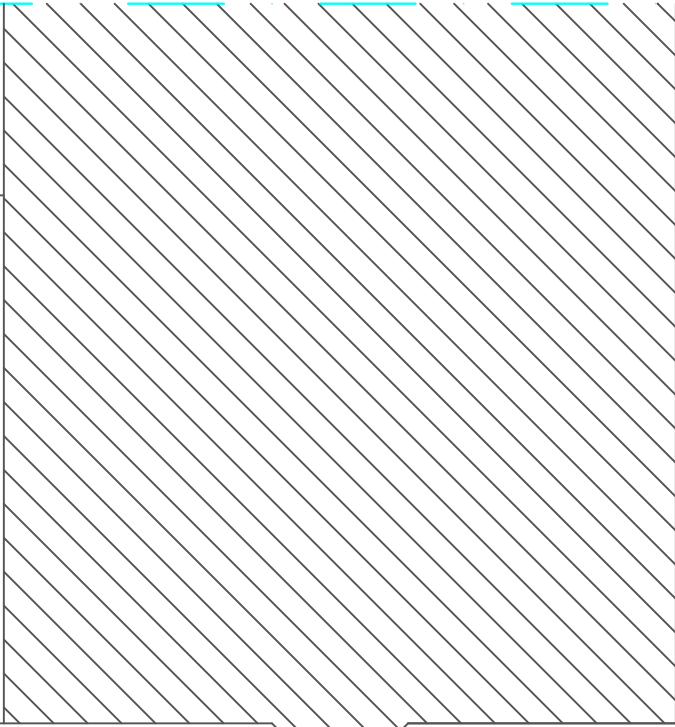
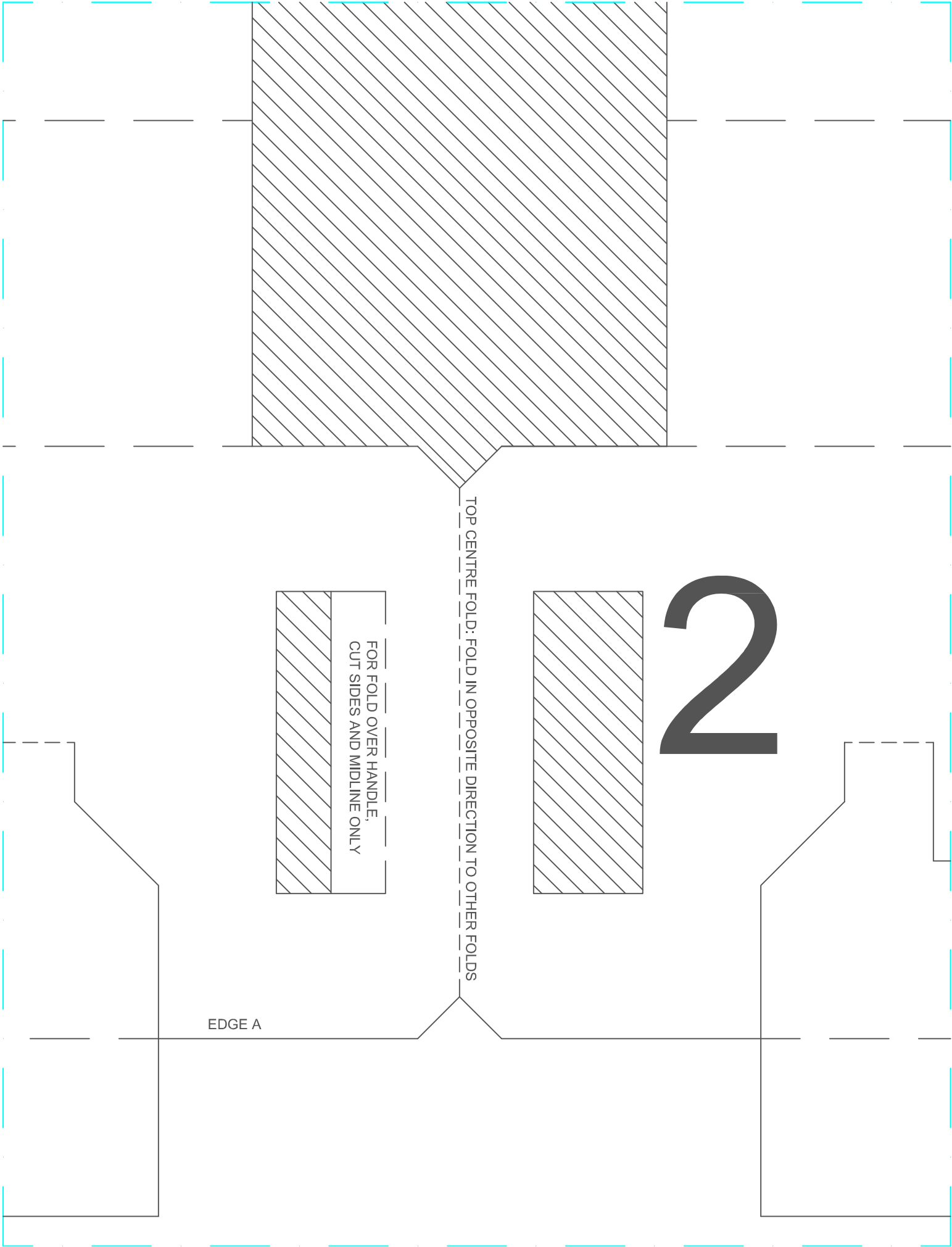
1

BOTTOM

DIVER

1

DIVIDER



2

TOP CENTRE FOLD: FOLD IN OPPOSITE DIRECTION TO OTHER FOLDS

EDGE A

3

DIVIDER



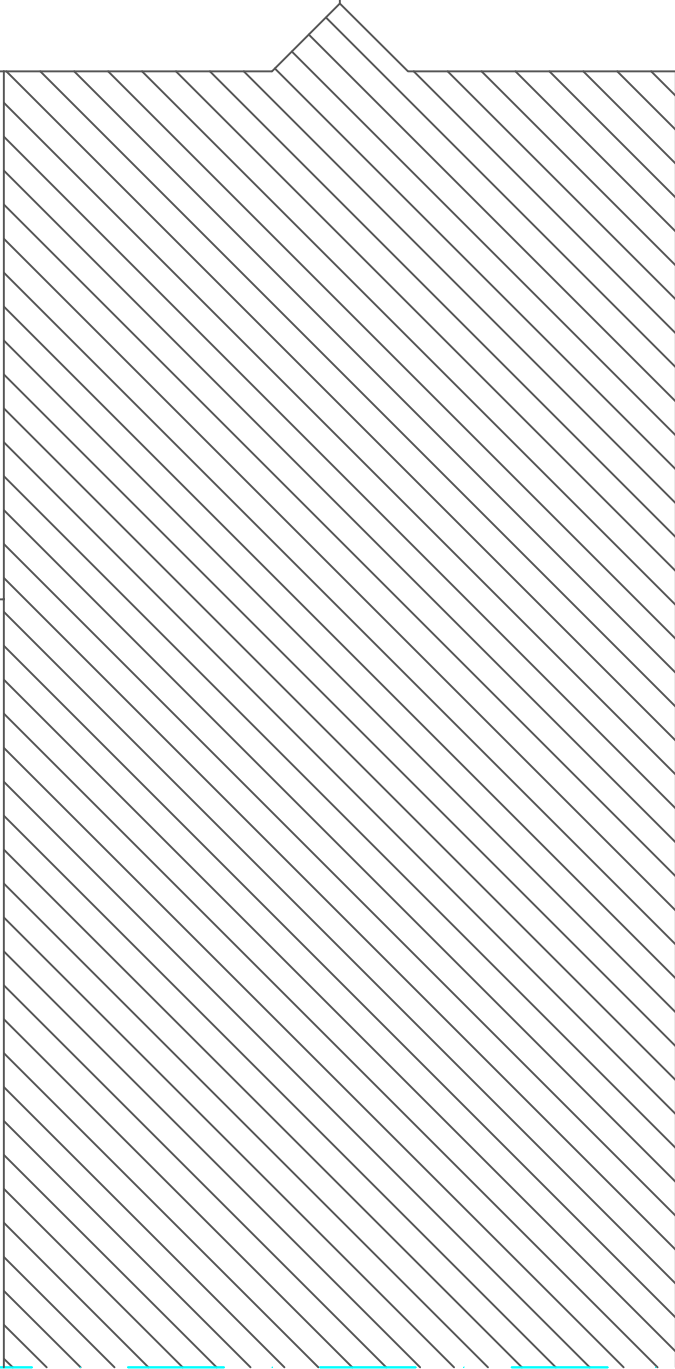
BOTTOM

4

EDGE B

EDGE A

TOP CENTRE FOLD



5

FOLD LINES

CUT LINES



CUT OUT SHADED AREAS

9

BOTTOM

