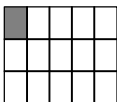
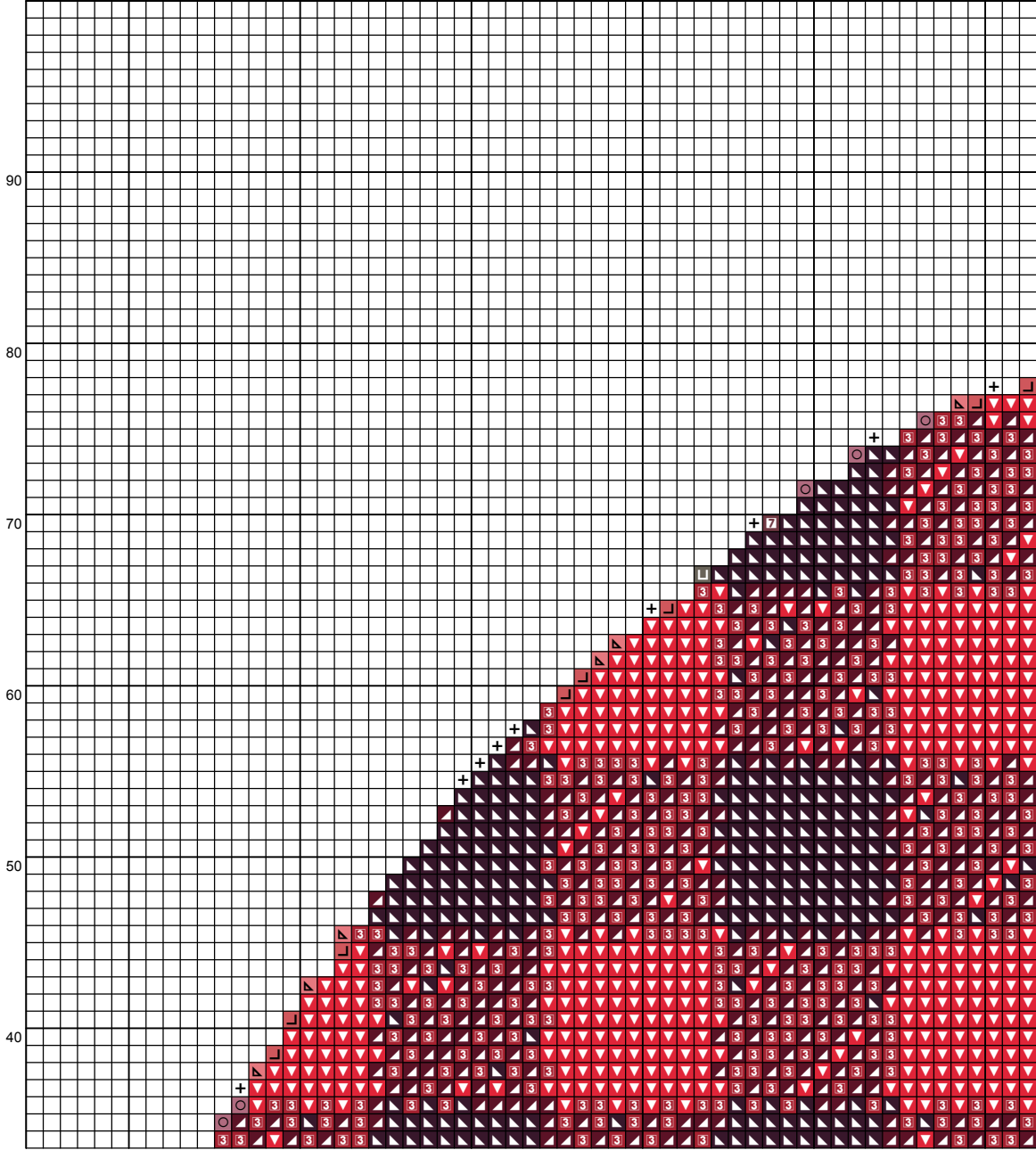
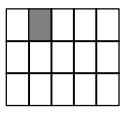
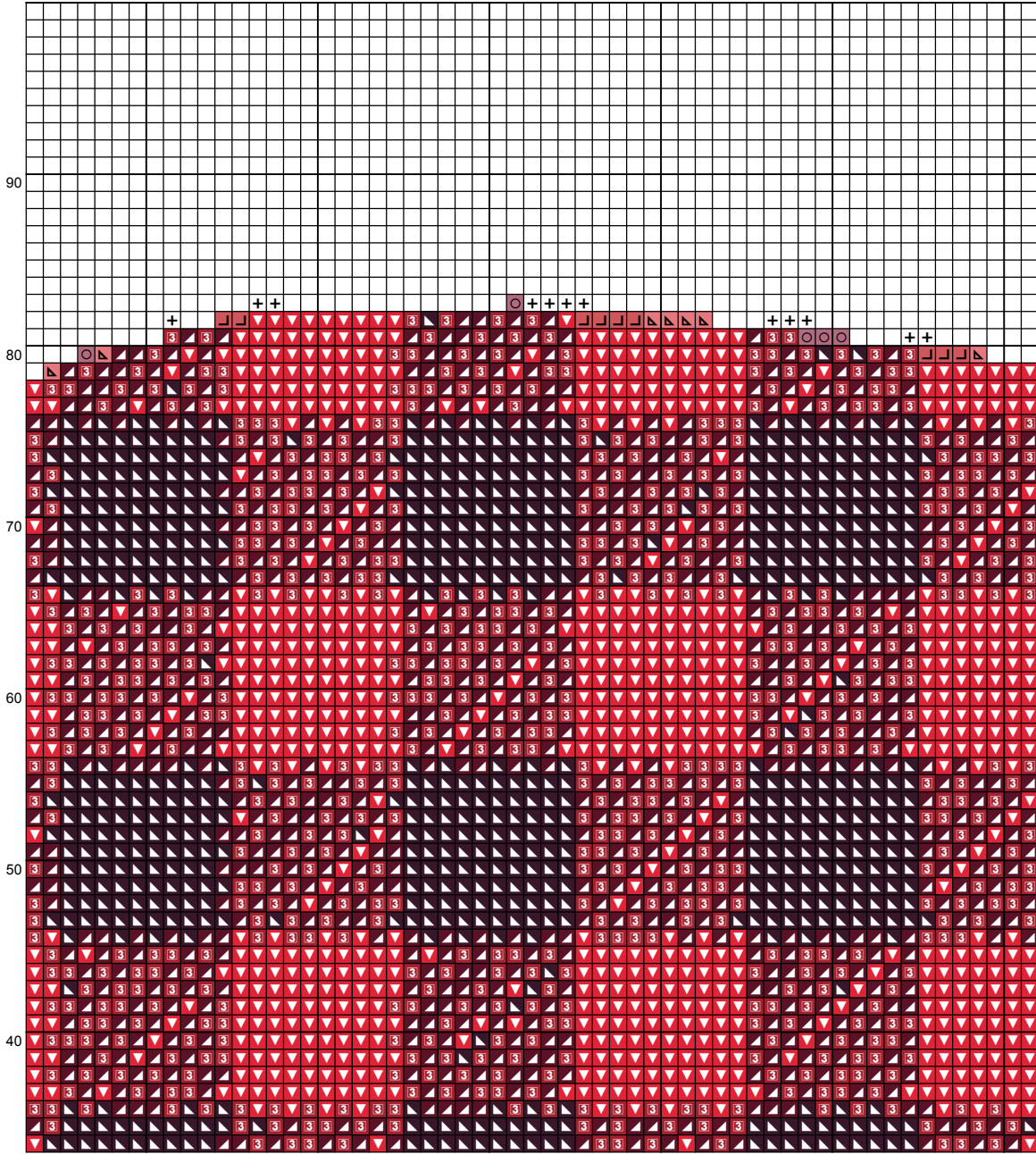
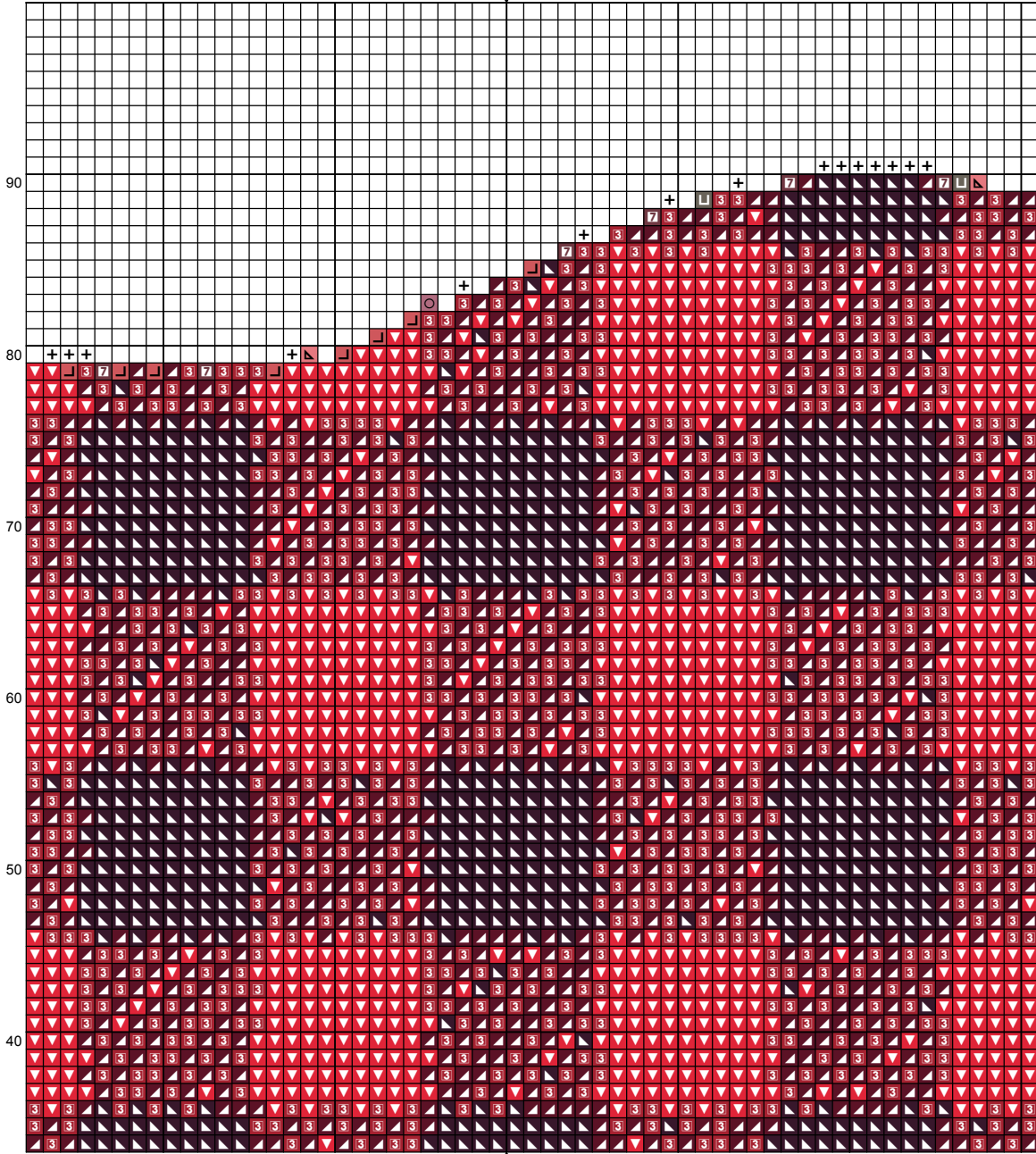


**Design size:** 20.86 x 14.29 inches or 52.98 x 36.29 cm







90

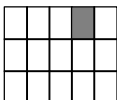
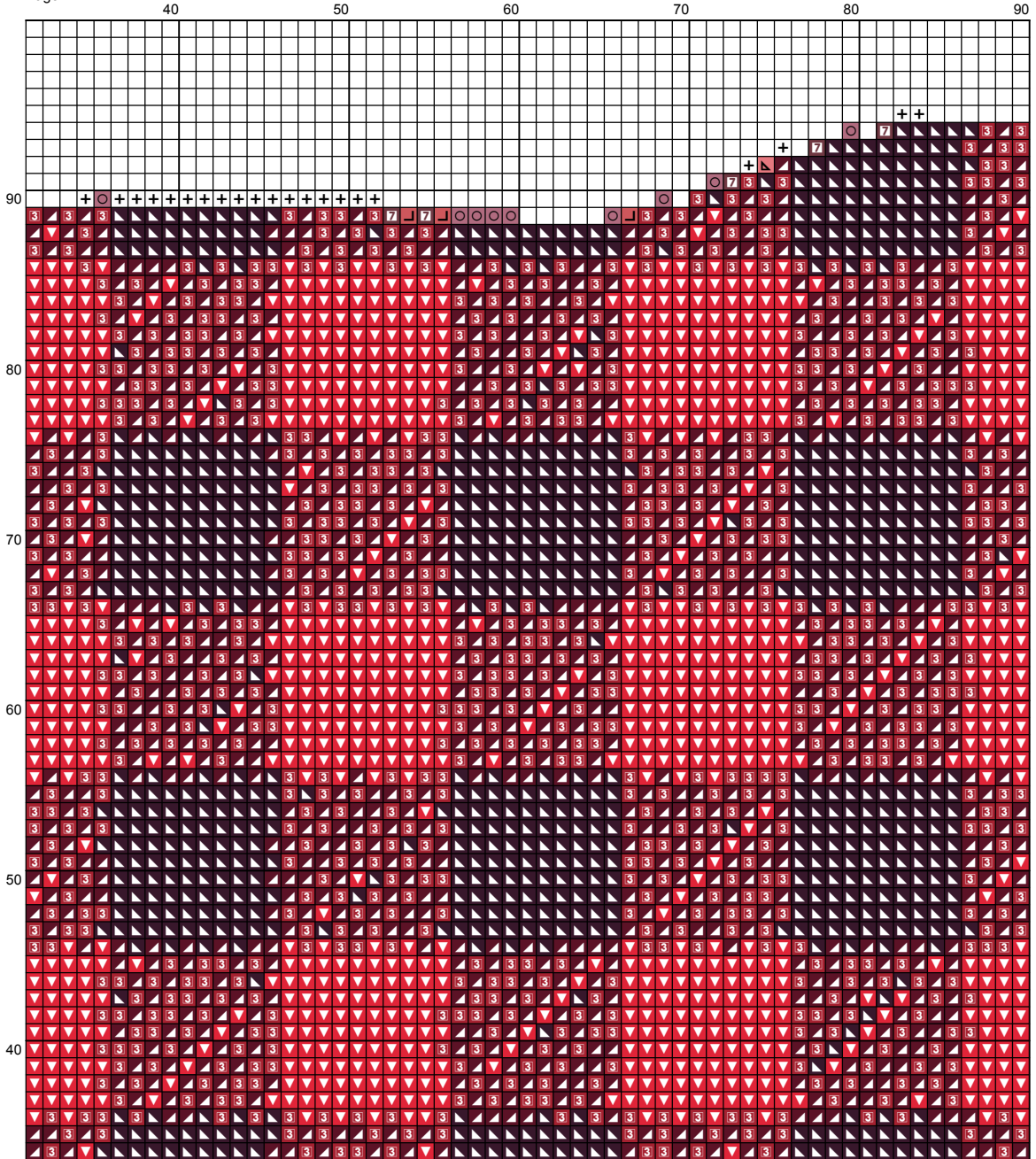
80

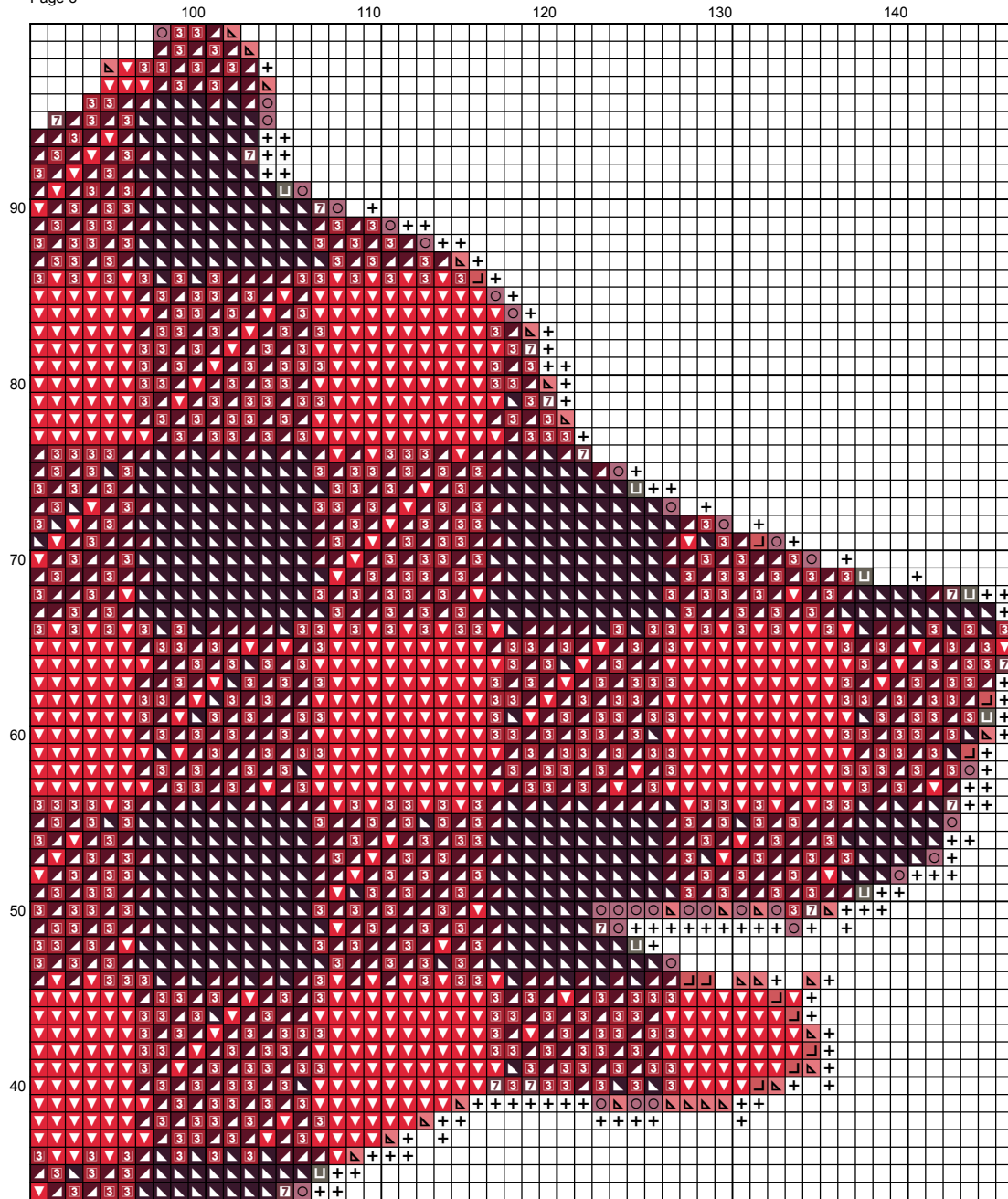
70

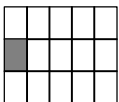
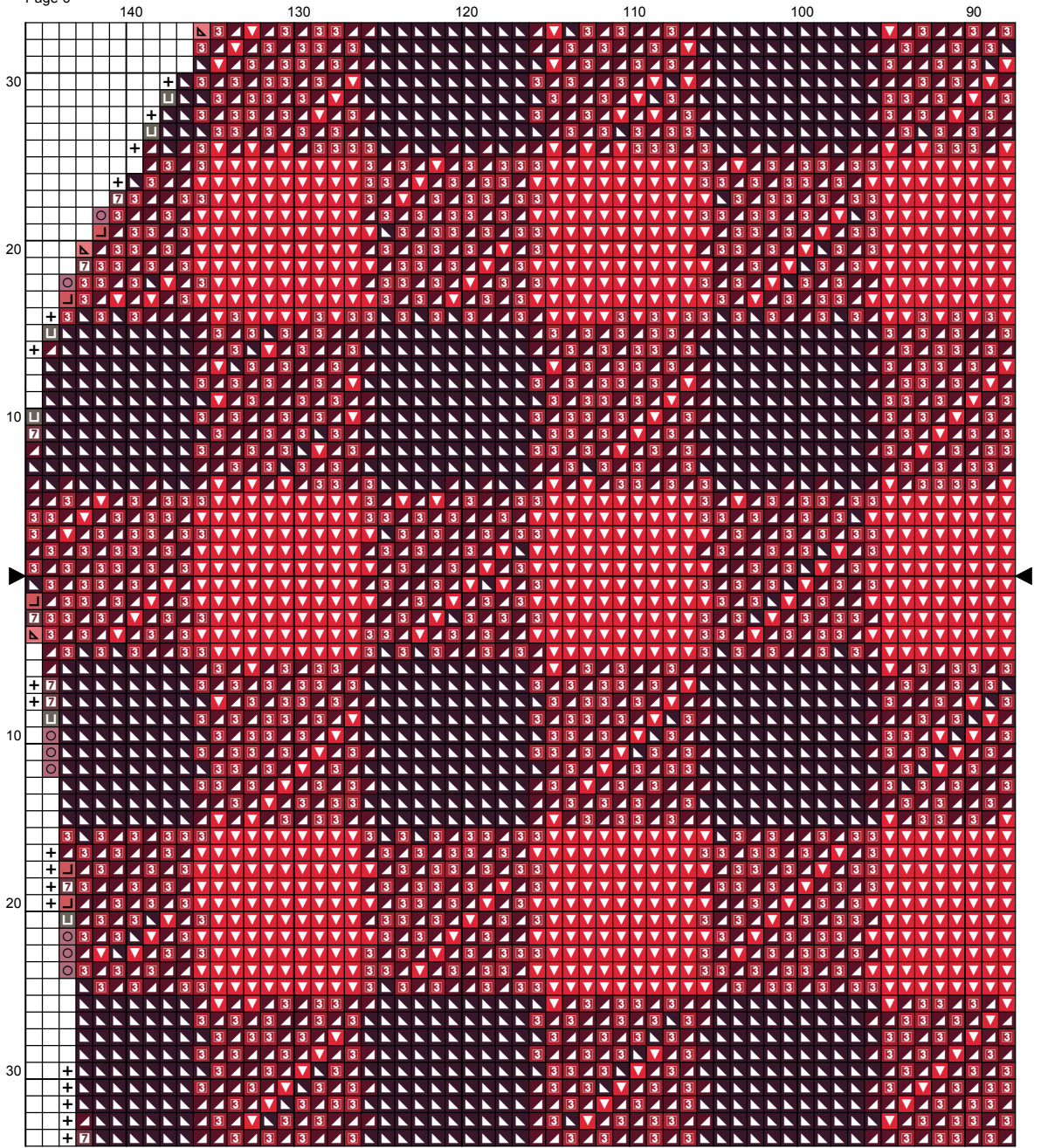
60

50

40

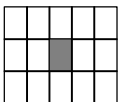
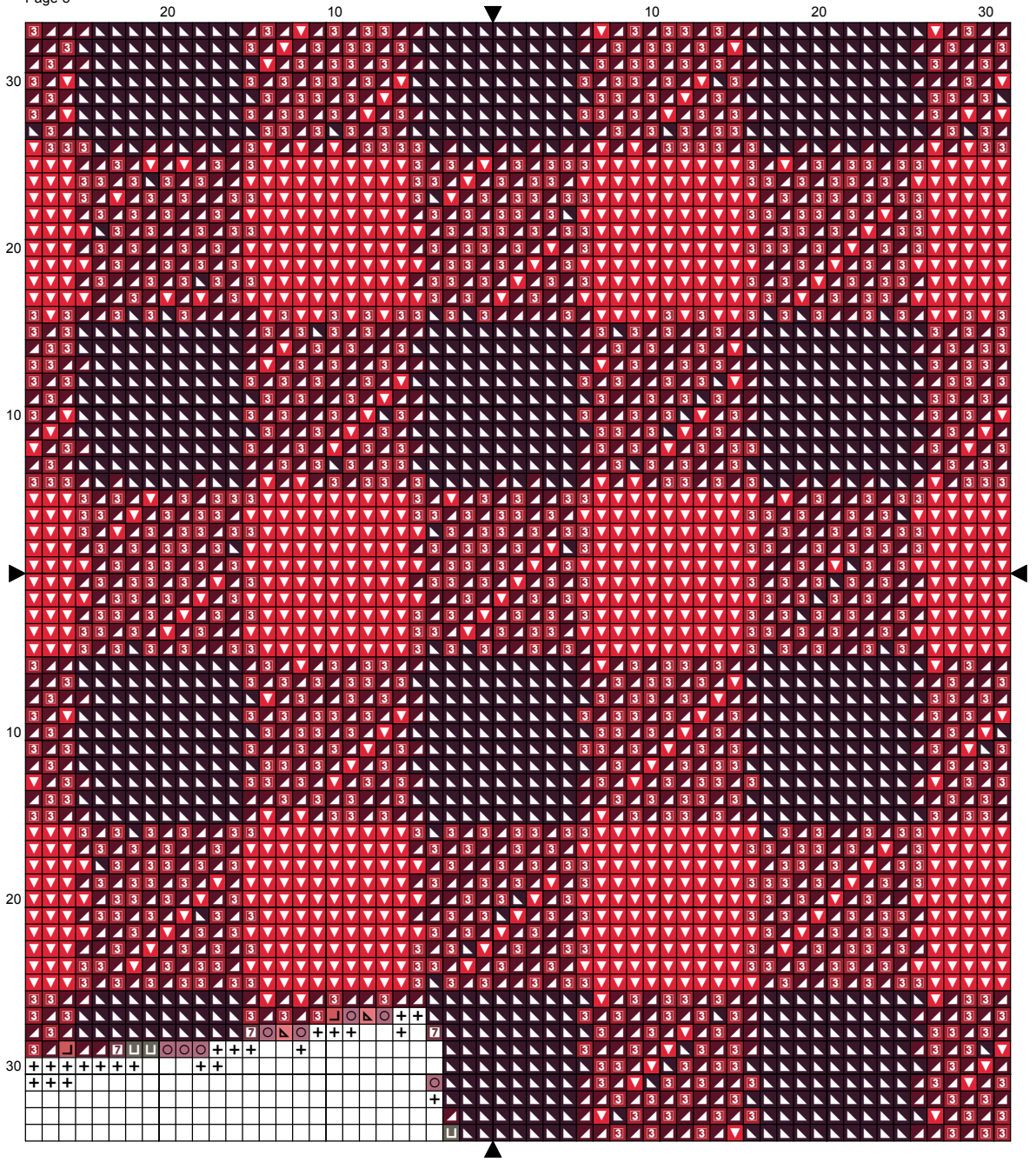



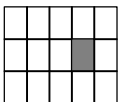
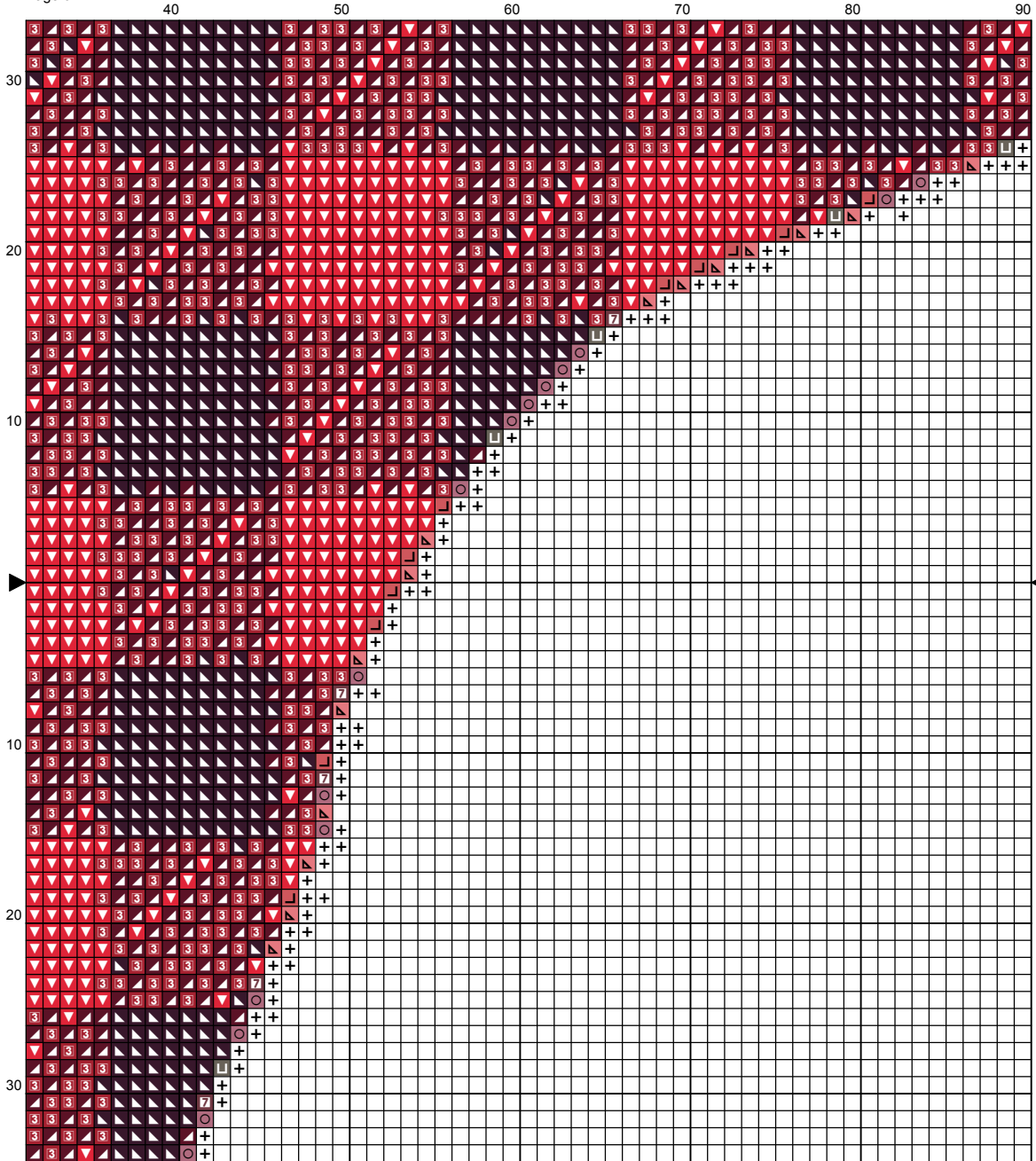


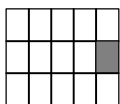
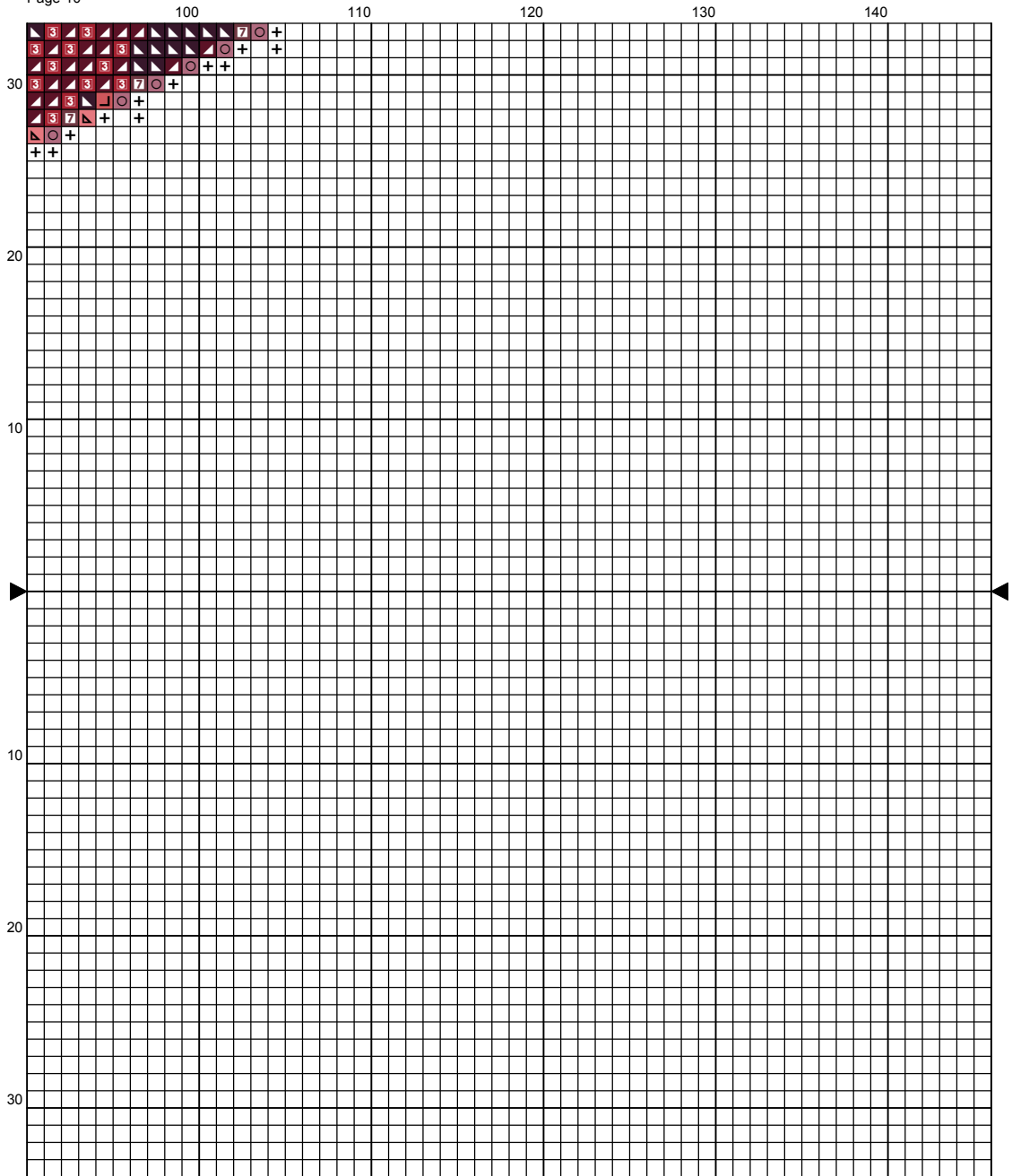



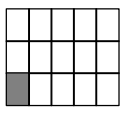
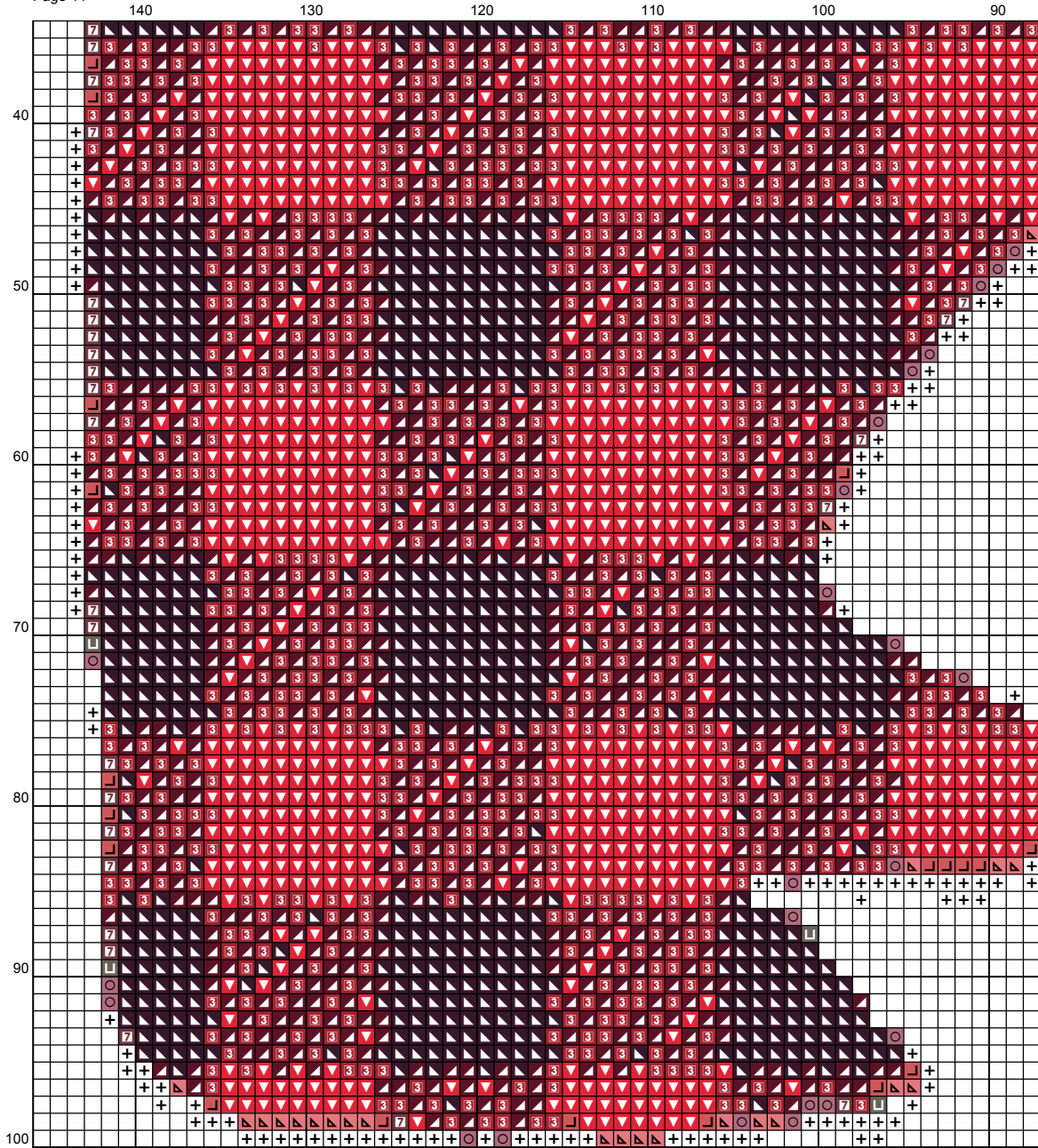


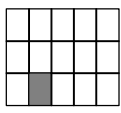
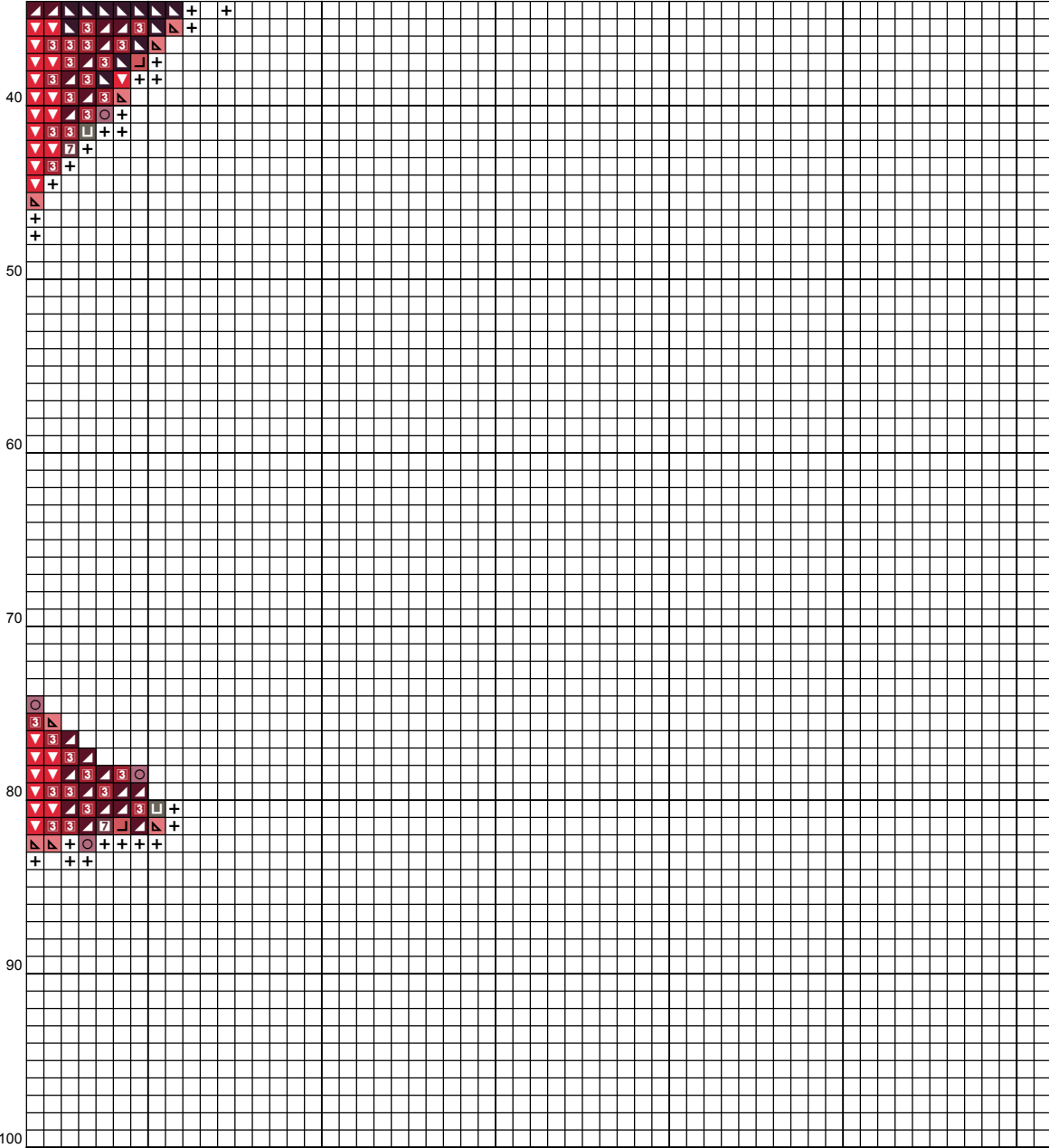


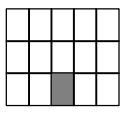
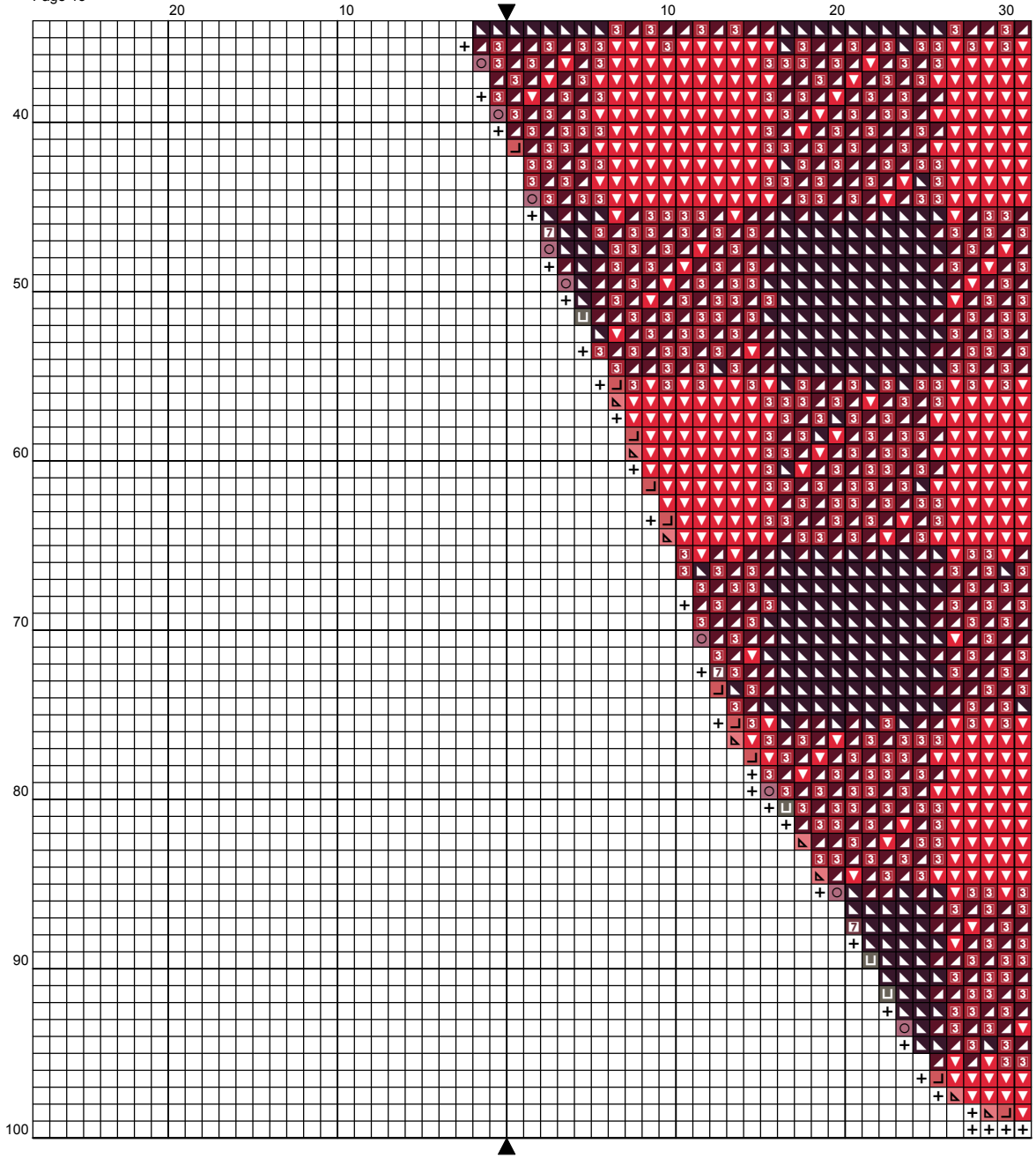


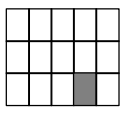
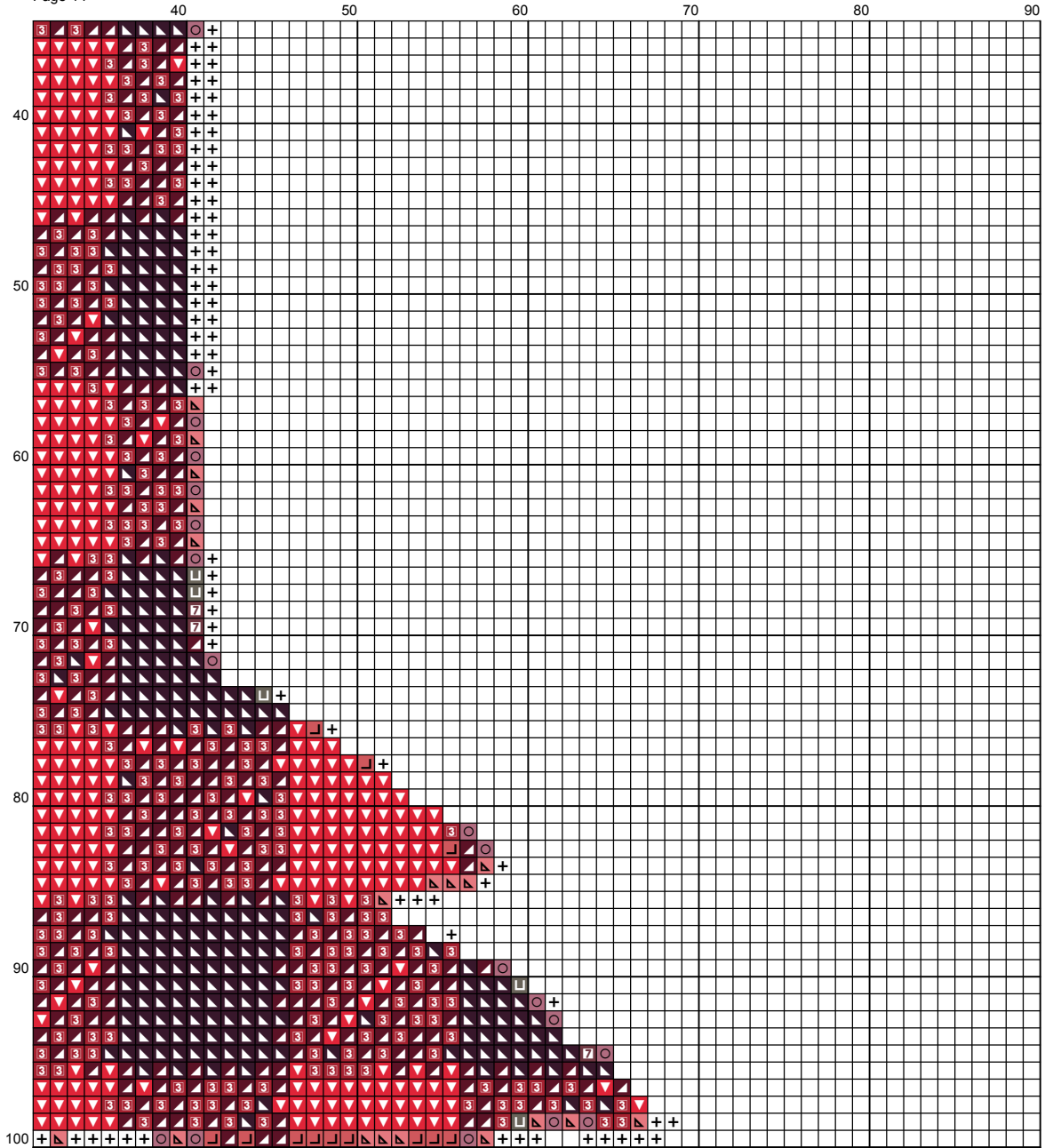












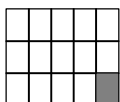
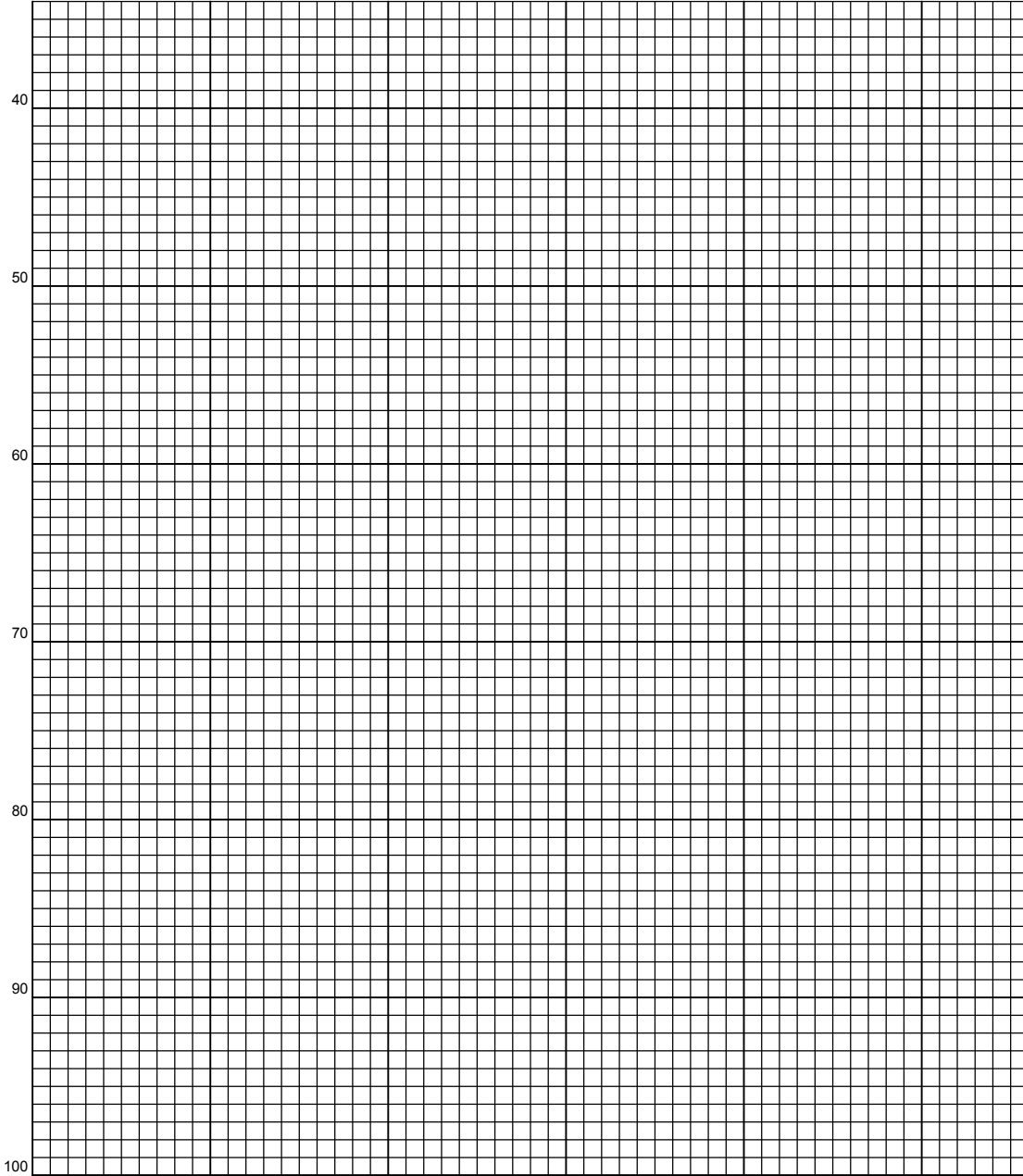
100

110

120

130

140





## Instructions and Symbol Key










---

**Fabric:** 14 count White Aida

**Stitches:** 292 x 200      **Size:** 20.86 x 14.29 inches or 52.98 x 36.29 cm

**Colours:** DMC

Use **2** strands of thread for cross stitch

<u>Sym</u>	<u>No.</u>	<u>Colour Name</u>	<u>Sym</u>	<u>No.</u>	<u>Colour Name</u>
	154	Prune rose		814	Deep wine red
	315	Antique lilac		646	Platinum grey
	347	Egyptian red		3801	Tulip red
	3712	Blush pink		316	Heather lilac
	760	Grenadine pink	+	BLANC	BLANC

This chart has been designed and printed with our best intentions of being without mistakes. However, the possibility of human error, printing mistakes or the variation of individual stitching does exist, and we regret that we cannot be responsible for this.

Produced using Cross Stitch Professional for Windows [www.dpsoftware.co.uk](http://www.dpsoftware.co.uk)