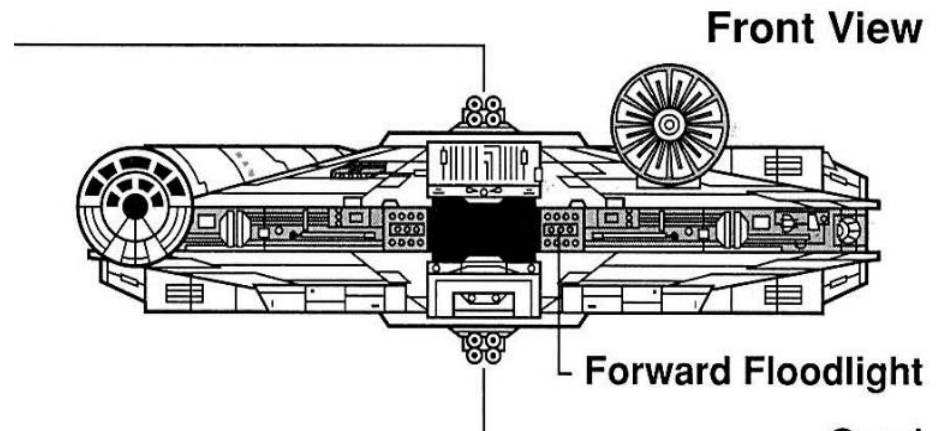
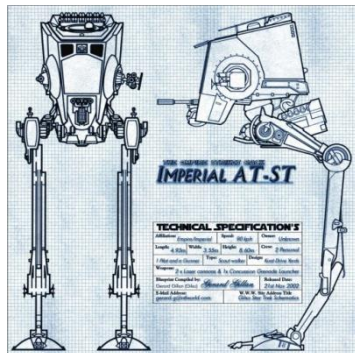


- ① Projectile Cannon
- ② Antipersonnel Laser Cannons
- ③ Primary Drive Motor
- ④ Periscope and Range Finder
- ⑤ Gunner's Station

[http://vignette2.wikia.nocookie.net/starwars/images/7/7f/ATTE2\\_negvv.jpg/revision/latest?cb=20071121182510](http://vignette2.wikia.nocookie.net/starwars/images/7/7f/ATTE2_negvv.jpg/revision/latest?cb=20071121182510)





<http://vignette4.wikia.nocookie.net/starwars/images/9/9d/ATTE-CHRON.jpg/revision/latest?cb=20070213195840>



## ALL TERRAIN TACTICAL ENFORCER

MANUFACTURER : ROTHANA HEAVY ENGINEERING  
KUAT DRIVE YARDS  
MODEL : ALL TERRAIN TACTICAL ENFORCER  
CLASS : WALKER

LENGTH : 13.2 METERS  
WIDTH : 5.32 METERS  
HEIGHT : 5.02 METERS  
MAXIMUM SPEED : 60 KM/H

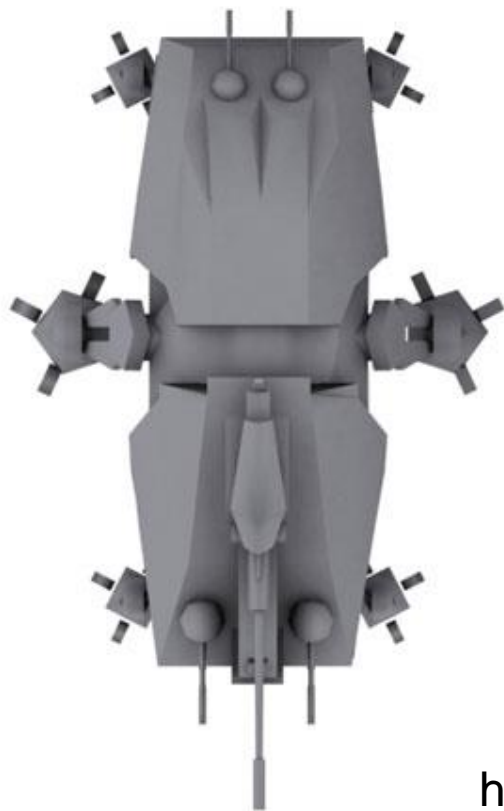
ARMAMENT  
ANTI-PERSONNEL LASER CANNONS (6)  
MASS-DRIVER CANNON (1)

COMPLEMENT  
IM-6 MEDICAL DROID (1)  
ALL TERRAIN RECON TRANSPORTS (2)  
CREW : PILOT (1), SPOTTER (1), GUNNER (5)  
PASSENGERS : 38 CLONE TROOPERS



[http://pre08.deviantart.net/2844/th/pre/f/2014/068/d/f/at\\_te\\_ortho\\_by\\_unusualsuspex-d79huyh.jpg](http://pre08.deviantart.net/2844/th/pre/f/2014/068/d/f/at_te_ortho_by_unusualsuspex-d79huyh.jpg)

STAR WARS  
IMPERIAL ASSAULT II  
RISE OF THE EMPIRE



 AT-TE