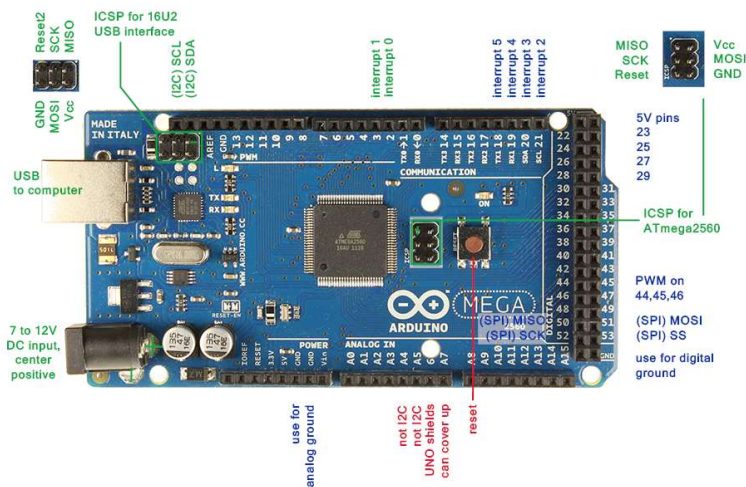


RF24 Adaptor board



Nrf24L01 mounted in to adaptor



RF24 Name	RF24 Pin	RF24 Adaptor Pin	Mega 2560 Pin
GND	1	GND	GND
3.3 V	2	VCC	+5 Only use +5 if using Adaptor
CE	3	CE	48
CSN	4	CSN	53
SLK	5	SLK	52
MOSI	6	MOSI	51
MISO	7	MISO	50
IRQ	8	IRQ	2 Interrupt 0

Note if RF24 adaptor is not being used then only connect NRF24L01 3.3V to 3.3 volts

For connections to other Arduino boards see table at <http://arduino-info.wikispaces.com/Nrf24L01-2.4GHz-HowTo>

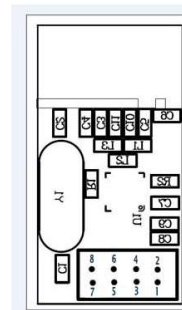
Images of NRF 24L02 board without adaptor only apply 3.3 volts to VCC



- 1: GND
- 2: VCC
- 3: CE
- 4: CS
- 5: SCK
- 6: MOSI
- 7: MISO
- 8: IRQ



Top Views



Bottom View