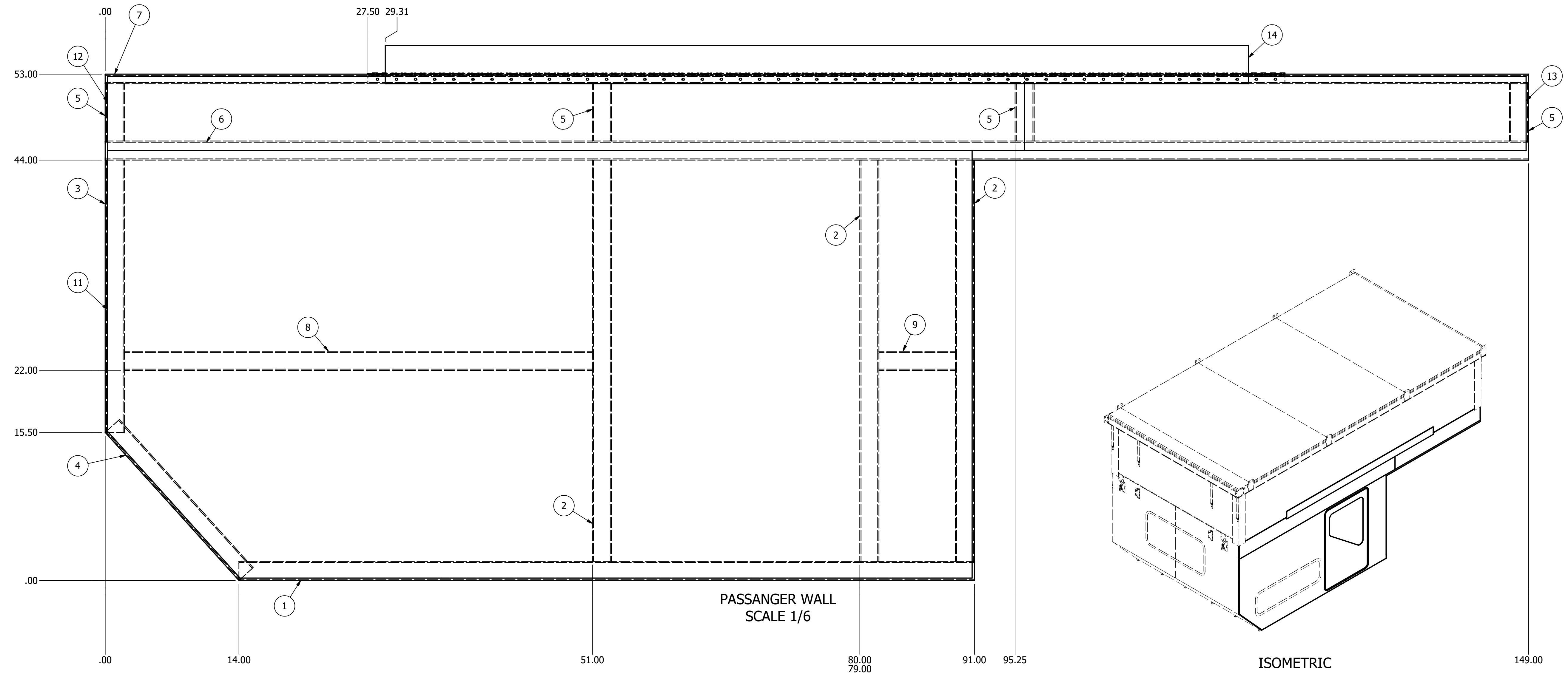
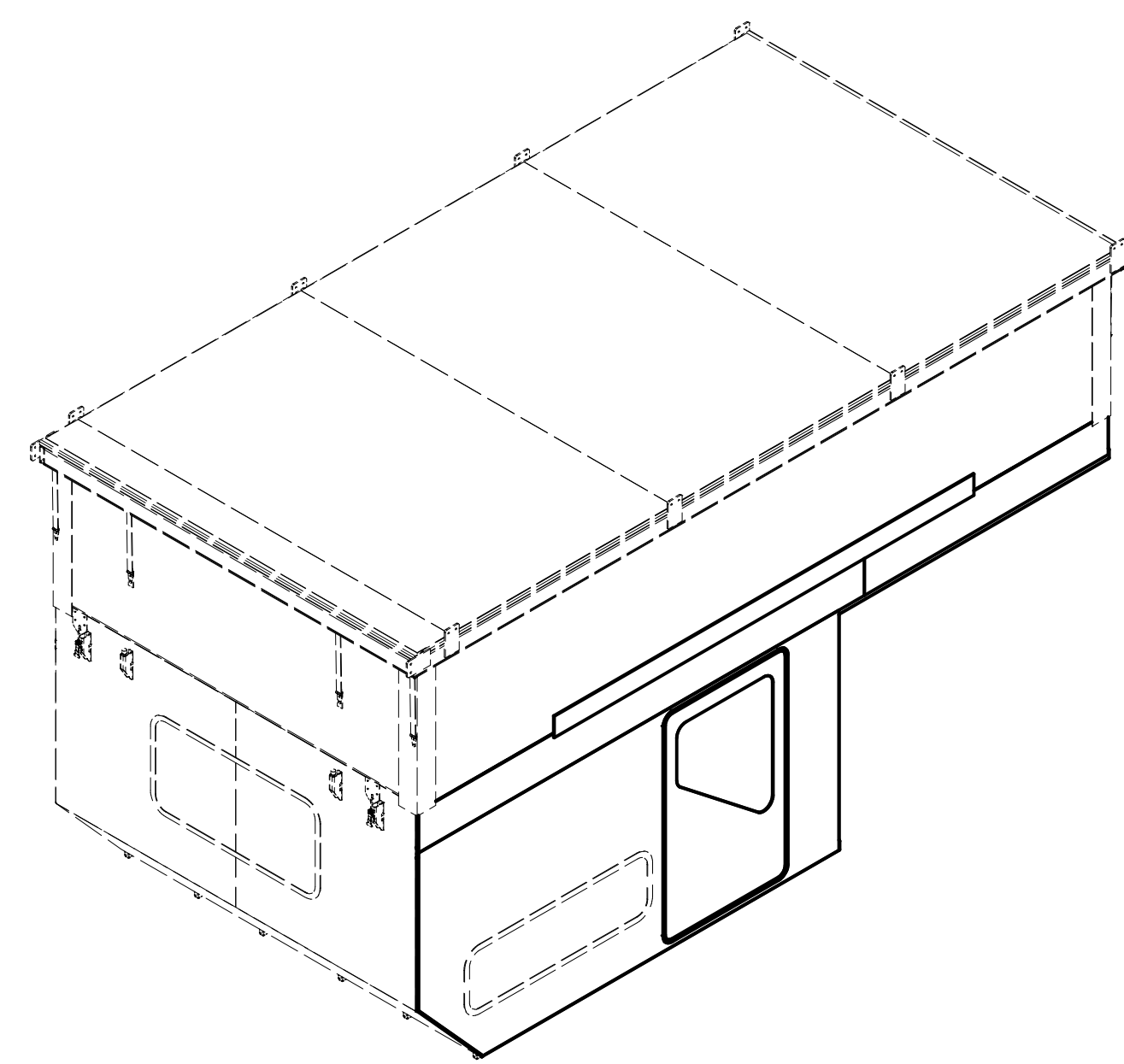


PARTS LIST		
ITEM	ITEM QTY	PART NUMBER
1	1	AISC HSS - 2 x 1 x 1/8 - 77
2	3	AISC HSS - 2 x 1 x 1/8 - 42
3	1	AISC HSS - 2 x 1 x 1/8 - 28.5
4	1	AISC HSS - 2 x 1 x 1/8 - 20.887
5	4	AISC HSS - 2 x 1 x 1/8 - 6
6	1	AISC HSS - 2 x 1 x 1/8 - 149
7	1	ASTM A513 - 1 x 1 x 3/25 - 149
8	1	AISC HSS - 2 x 1 x 1/8 - 49.000
9	1	AISC HSS - 2 x 1 x 1/8 - 8.000
10	1	8ft hinge1575A915_SURFACE-MOUNT PIANO HINGE WITH HOLES
11	1	SHEET METAL 90.5 X 44.75 X 0.0625
12	1	SHEET METAL 7.75 X 96 X 0.0625
13	1	SHEET METAL 52.5 X 7.75 X 0.0625
14	1	SHEET METAL 4 X 90.375 X 0.125
15	1	39695T330_QUICK ADJUST TIE-DOWN TRACK-8ft

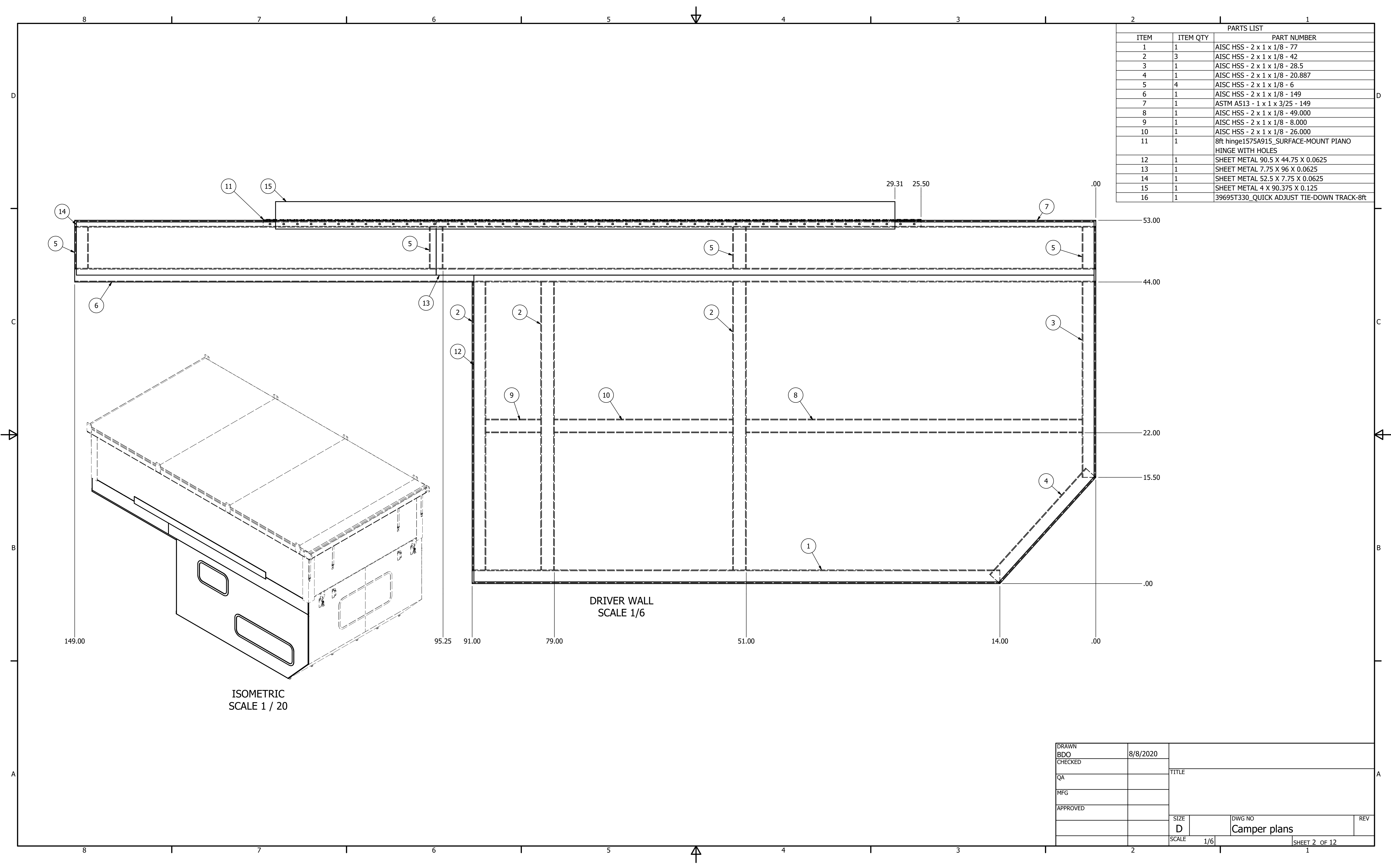


PASSANGER WALL  
SCALE 1/6



ISOMETRIC  
SCALE 1 / 25

DRAWN	BDO	8/8/2020		
CHECKED			TITLE	
QA				
MFG				
APPROVED				
	SIZE	D	DWG NO	REV
	SCALE	1/6	Camper plans	
			SHEET 1 OF 12	



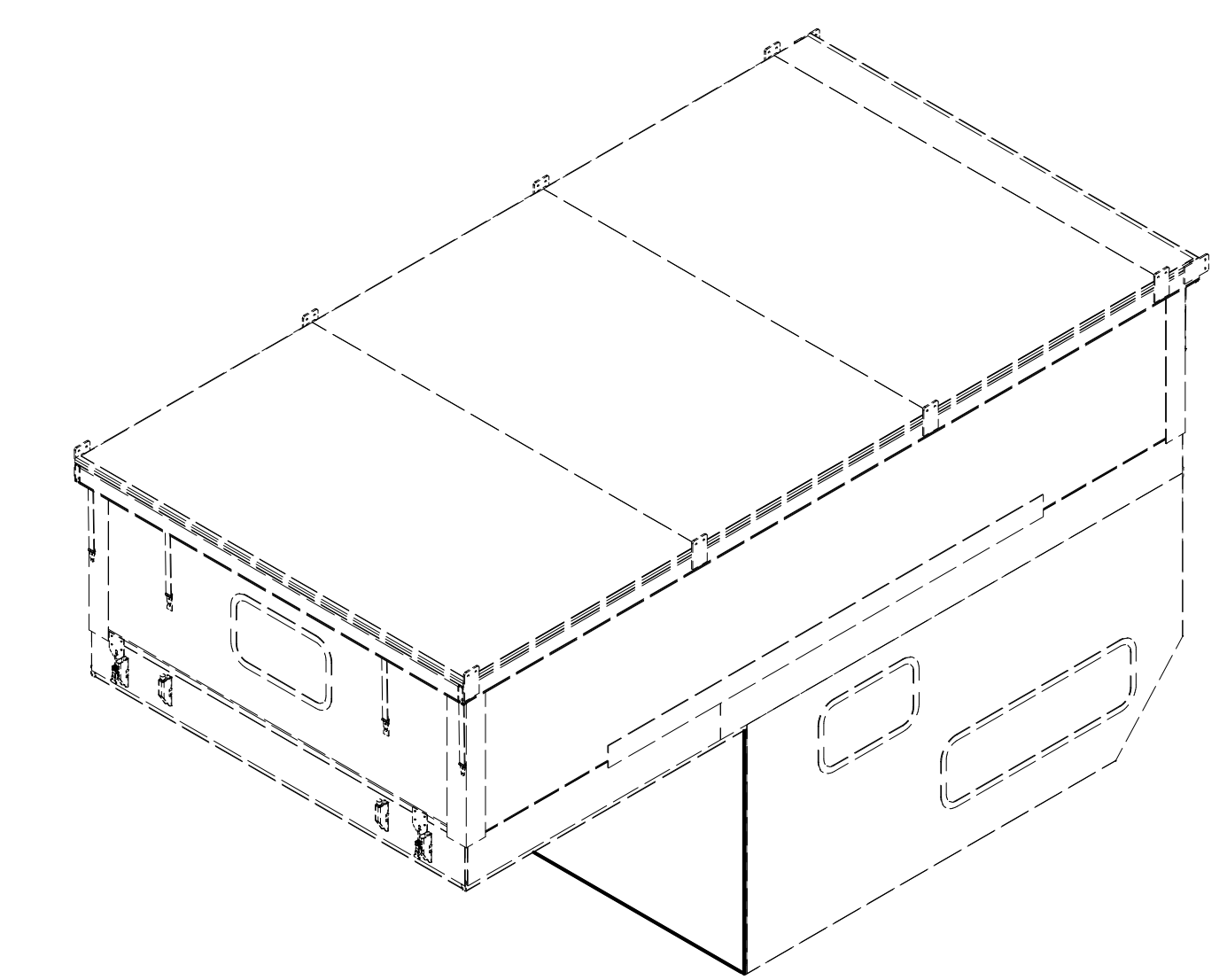
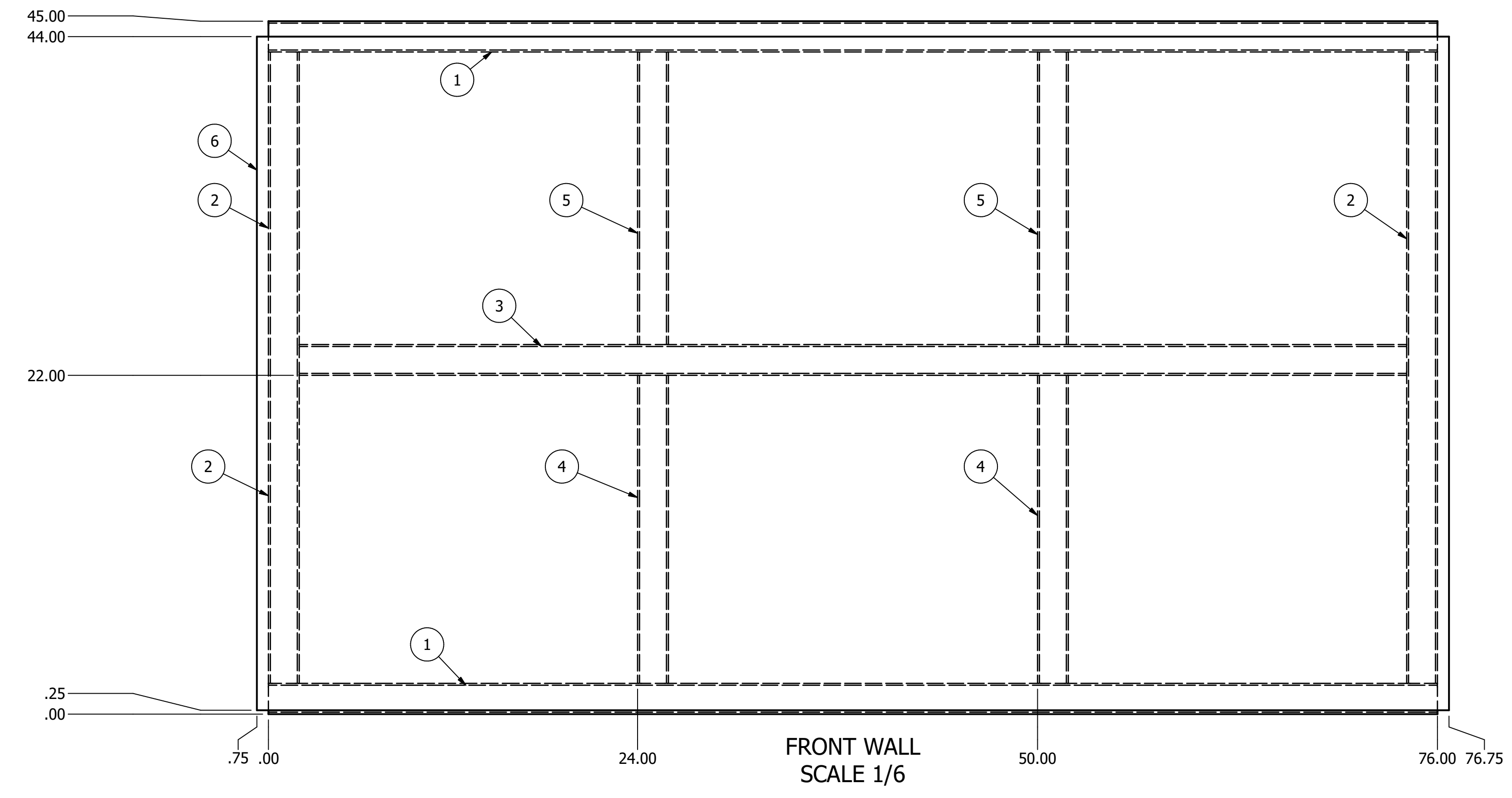
PARTS LIST		
ITEM	ITEM QTY	PART NUMBER
1	1	AISC HSS - 2 x 1 x 1/8 - 77
2	3	AISC HSS - 2 x 1 x 1/8 - 42
3	1	AISC HSS - 2 x 1 x 1/8 - 28.5
4	1	AISC HSS - 2 x 1 x 1/8 - 20.887
5	4	AISC HSS - 2 x 1 x 1/8 - 6
6	1	AISC HSS - 2 x 1 x 1/8 - 149
7	1	ASTM A513 - 1 x 1 x 3/25 - 149
8	1	AISC HSS - 2 x 1 x 1/8 - 49.000
9	1	AISC HSS - 2 x 1 x 1/8 - 8.000
10	1	AISC HSS - 2 x 1 x 1/8 - 26.000
11	1	8ft hinge1575A915_SURFACE-MOUNT PIANO HINGE WITH HOLES
12	1	SHEET METAL 90.5 X 44.75 X 0.0625
13	1	SHEET METAL 7.75 X 96 X 0.0625
14	1	SHEET METAL 52.5 X 7.75 X 0.0625
15	1	SHEET METAL 4 X 90.375 X 0.125
16	1	39695T330_QUICK ADJUST TIE-DOWN TRACK-8ft

DRIVER WALL  
SCALE 1/6

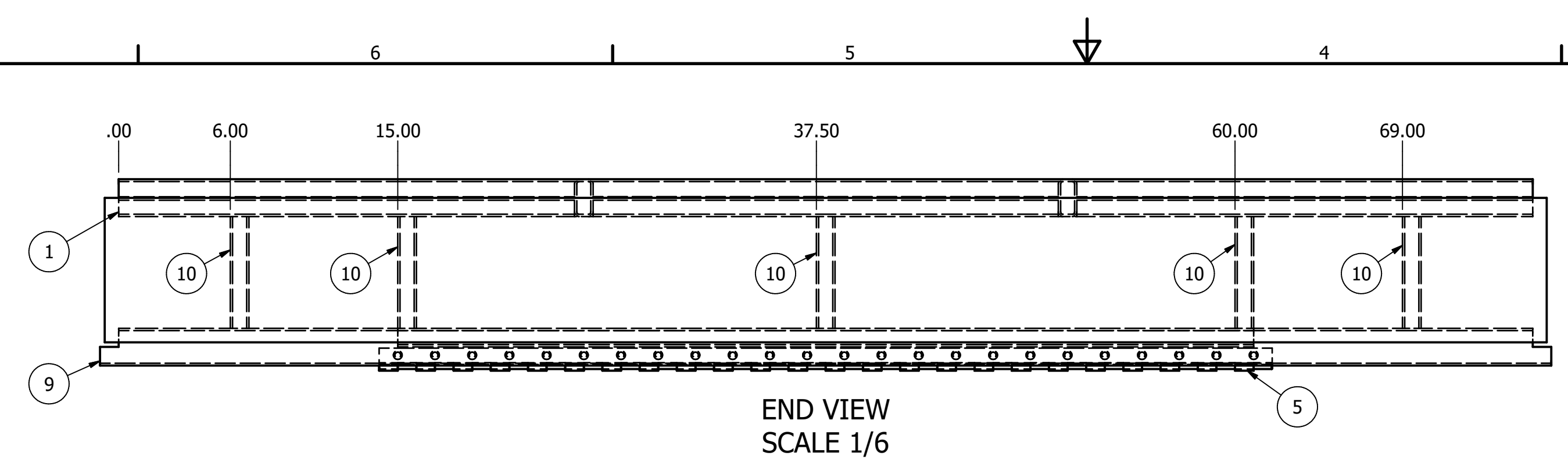
ISOMETRIC  
SCALE 1 / 20

DRAWN	BDO	8/8/2020		
CHECKED			TITLE	
QA				
MFG				
APPROVED				
	SIZE	D	DWG NO	REV
	SCALE	1/6	Camper plans	
			SHEET 2 OF 12	1

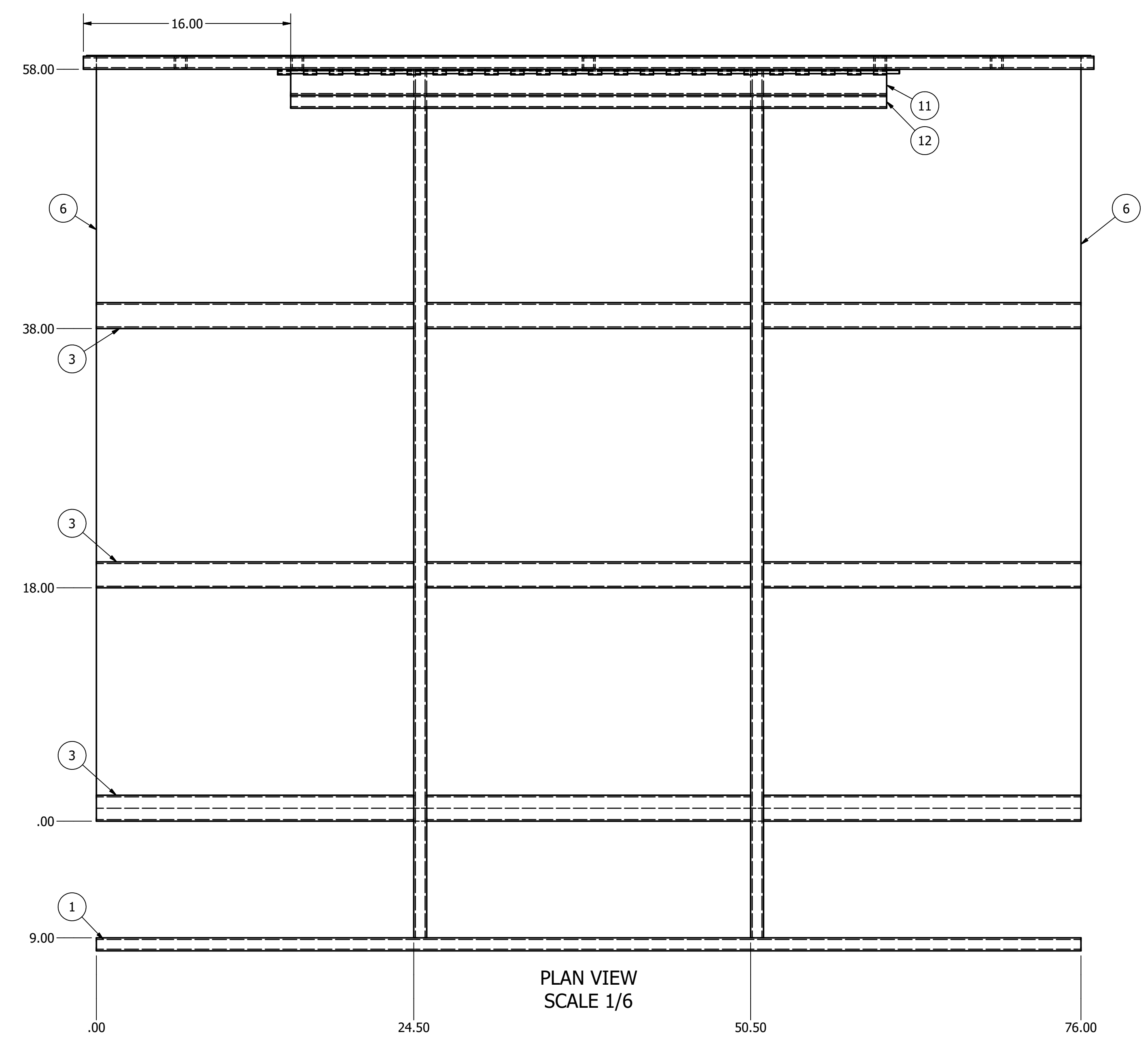
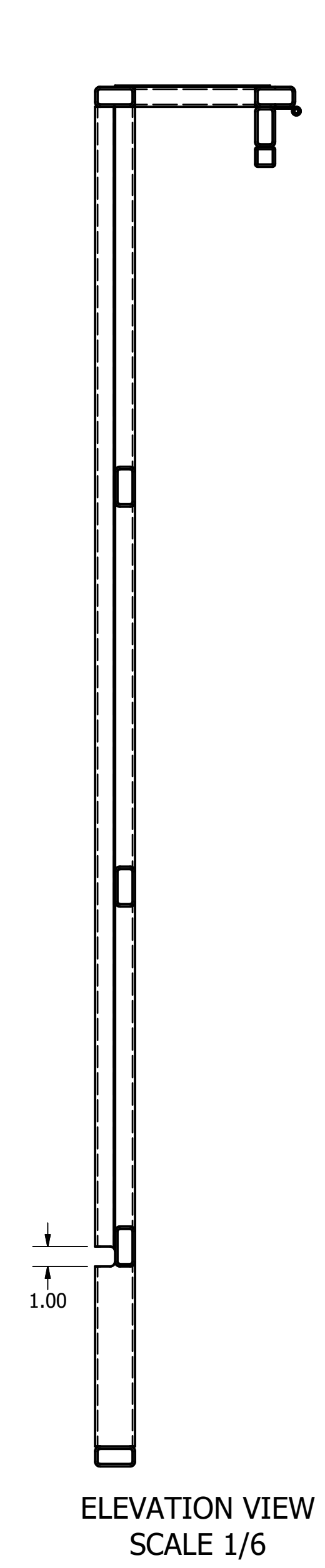
PARTS LIST		
ITEM	ITEM QTY	PART NUMBER
1	2	AISC HSS - 2 x 1 x 1/8 - 76.000
2	2	AISC HSS - 2 x 1 x 1/8 - 41.000
3	1	AISC HSS - 2 x 1 x 1/8 - 72.000
4	2	AISC HSS - 2 x 1 x 1/8 - 20.000
5	2	AISC HSS - 2 x 1 x 1/8 - 19
6	1	SHEET METAL 43.75 X 77.5 X 0.0625



DRAWN	BDO	8/8/2020		
CHECKED			TITLE	
QA				
MFG				
APPROVED				
			SIZE	DWG NO
			D	Camper plans
			SCALE	REV
			1/6	
			SHEET 3 OF 12	

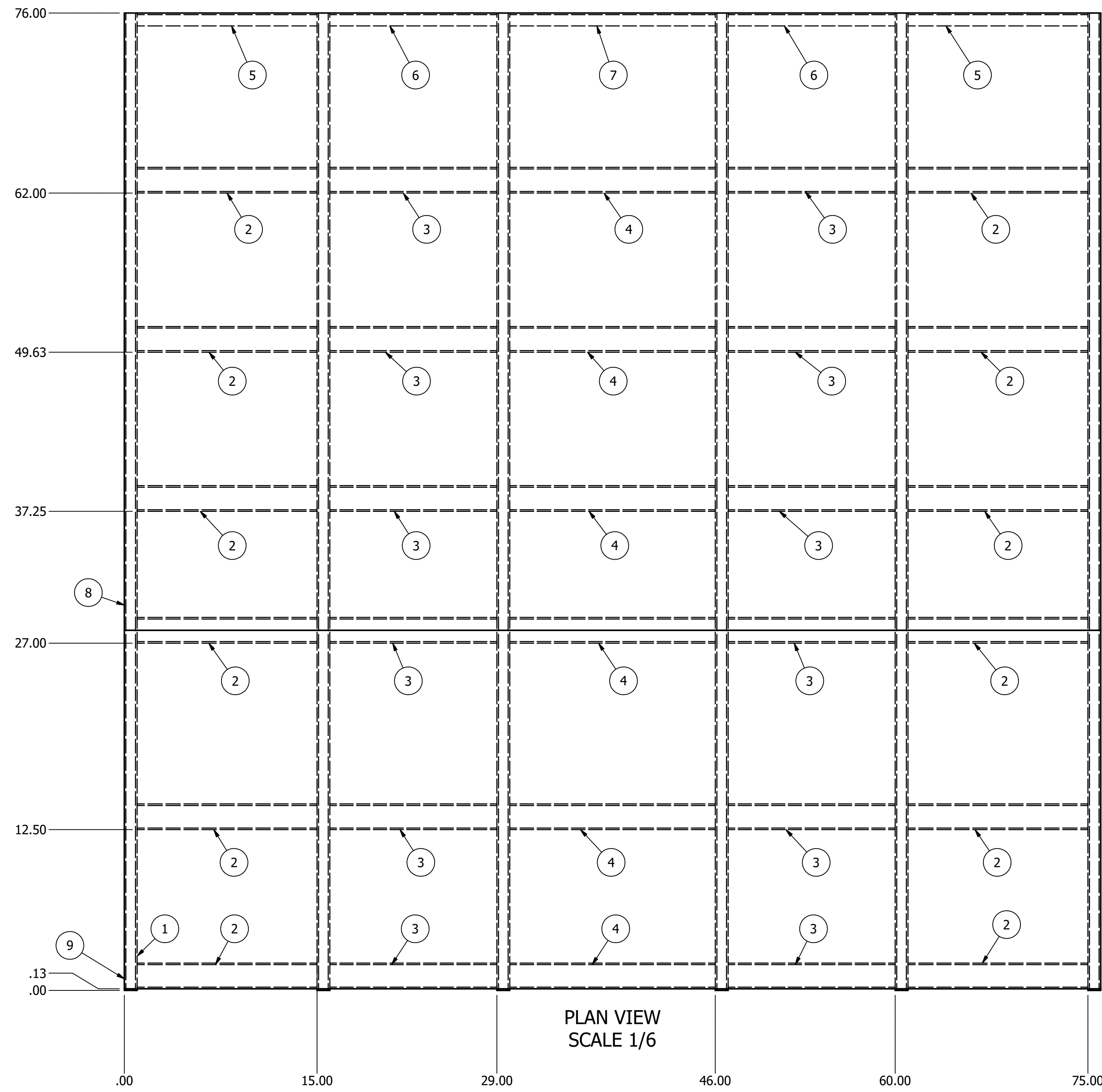


PARTS LIST		
ITEM	ITEM QTY	PART NUMBER
1	2	AISC HSS - 2 x 1 x 1/8 - 76.000
2	2	AISC HSS - 2 x 1 x 1/8 - 67
3	6	AISC HSS - 2 x 1 x 1/8 - 24.500
4	3	AISC HSS - 2 x 1 x 1/8 - 25.000
5	1	1575A918_SURFACE-MOUNT PIANO HINGE WITH HOLES
6	2	SHEET METAL 24.5 X 57.000 X 0.0625
7	1	SHEET METAL 25 X 57 X 0.06666667
8	1	SHEET METAL 7.75 X 77.500 X 0.0625
9	1	AISC HSS - 2 x 1 x 1/8 - 78
10	5	ASTM A513 - 1 x 1 x 3/25 - 6.000
11	1	AISC HSS - 2 x 1 x 1/8 - 46.000
12	1	ASTM A513 - 1 x 1 x 3/25 - 46.000

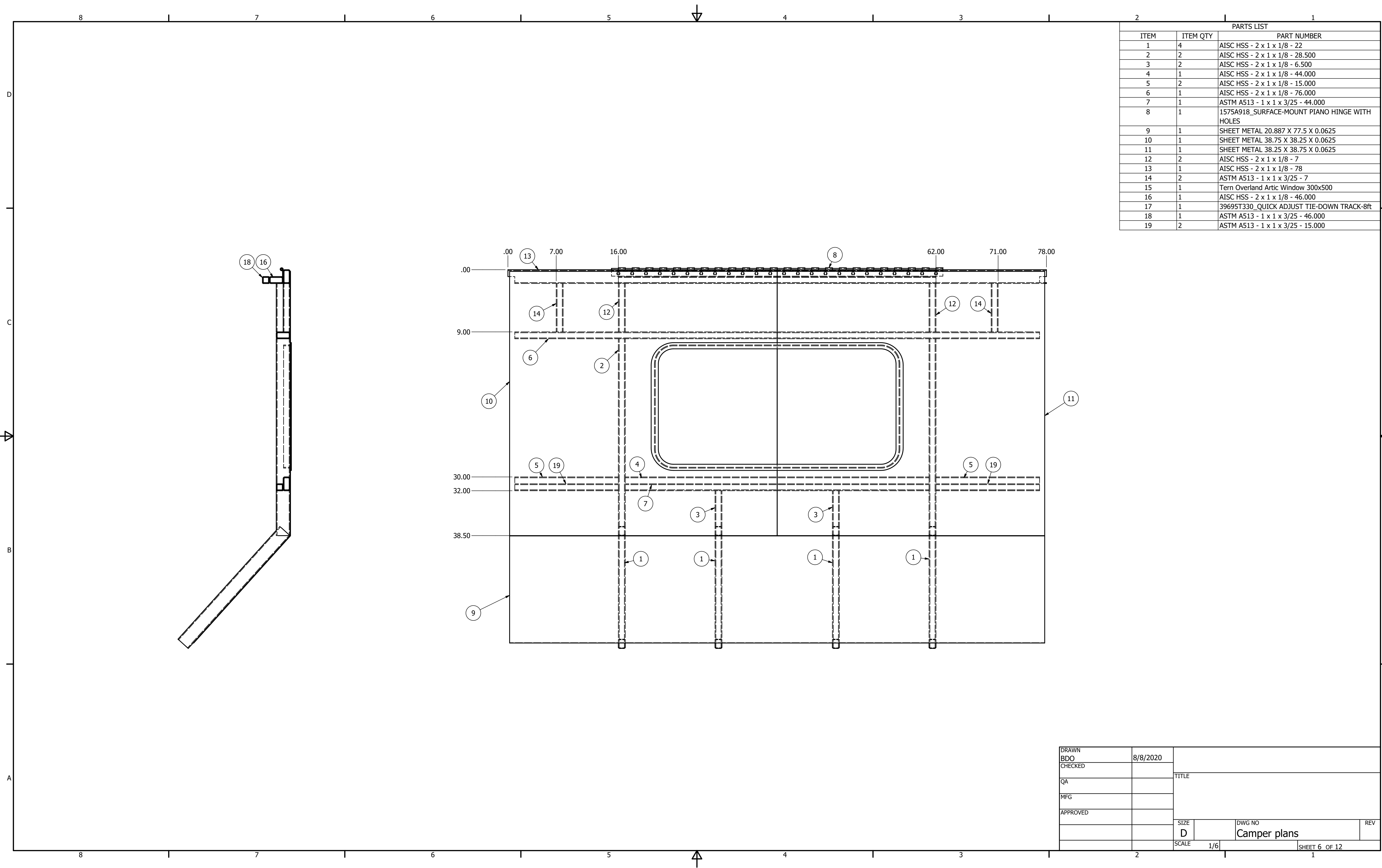


DRAWN	BDO	8/8/2020		
CHECKED			TITLE	
QA				
MFG				
APPROVED				
			SIZE	DWG NO
			D	Camper plans
			SCALE	REV
			1/6	

PARTS LIST		
ITEM	ITEM QTY	PART NUMBER
1	6	AISC HSS - 2 x 1 x 1/8 - 76.000
2	12	AISC HSS - 2 x 1 x 1/8 - 14.000
3	12	AISC HSS - 2 x 1 x 1/8 - 13.000
4	6	AISC HSS - 2 x 1 x 1/8 - 16.000
5	2	AISC - L 1 x 1 x 1/8 - 14.000
6	2	AISC - L 1 x 1 x 1/8 - 13
7	1	AISC - L 1 x 1 x 1/8 - 16
8	1	SHEET METAL 48 X 76.000 X 0.125
9	1	SHEET METAL 27.875 X 76 X 0.125
10	4	39695T330_QUICK ADJUST TIE-DOWN TRACK-8ft
11	1	65439695T330_QUICK ADJUST TIE-DOWN TRACK-8ft



DRAWN	8/8/2020		
CHECKED		TITLE	
QA			
MFG			
APPROVED			
		SIZE	DWG NO
		D	Camper plans
		SCALE	REV
		1/6	

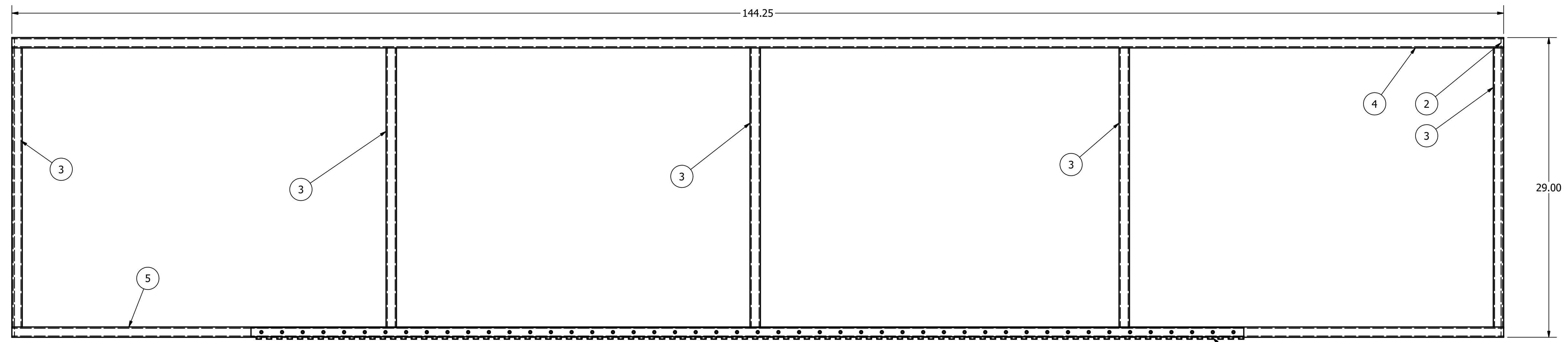


PARTS LIST		
ITEM	ITEM QTY	PART NUMBER
1	4	AISC HSS - 2 x 1 x 1/8 - 22
2	2	AISC HSS - 2 x 1 x 1/8 - 28.500
3	2	AISC HSS - 2 x 1 x 1/8 - 6.500
4	1	AISC HSS - 2 x 1 x 1/8 - 44.000
5	2	AISC HSS - 2 x 1 x 1/8 - 15.000
6	1	AISC HSS - 2 x 1 x 1/8 - 76.000
7	1	ASTM A513 - 1 x 1 x 3/25 - 44.000
8	1	1575A918_SURFACE-MOUNT PIANO HINGE WITH HOLES
9	1	SHEET METAL 20.887 X 77.5 X 0.0625
10	1	SHEET METAL 38.75 X 38.25 X 0.0625
11	1	SHEET METAL 38.25 X 38.75 X 0.0625
12	2	AISC HSS - 2 x 1 x 1/8 - 7
13	1	AISC HSS - 2 x 1 x 1/8 - 78
14	2	ASTM A513 - 1 x 1 x 3/25 - 7
15	1	Teri Overland Artic Window 300x500
16	1	AISC HSS - 2 x 1 x 1/8 - 46.000
17	1	3969ST330_QUICK ADJUST TIE-DOWN TRACK-8ft
18	1	ASTM A513 - 1 x 1 x 3/25 - 46.000
19	2	ASTM A513 - 1 x 1 x 3/25 - 15.000

DRAWN	BDO	8/8/2020		
CHECKED			TITLE	
QA				
MFG				
APPROVED				
			SIZE	DWG NO
			D	Camper plans
			SCALE	REV
			1/6	
			SHEET 6 OF 12	

PARTS LIST		
ITEM	ITEM QTY	PART NUMBER
1	1	8 foot hinge1575A915_SURFACE-MOUNT PIANO HINGE WITH HOLES (1)
2	1	SHEET METAL 29 X 143.75 X 0.0625
3	5	ASTM A513 - 1 x 1 x 3/25 - 27
4	1	ASTM A513 - 1 x 1 x 3/25 - 144.25
5	1	ASTM A513 - 1 x 1 x 3/25 - 144.250

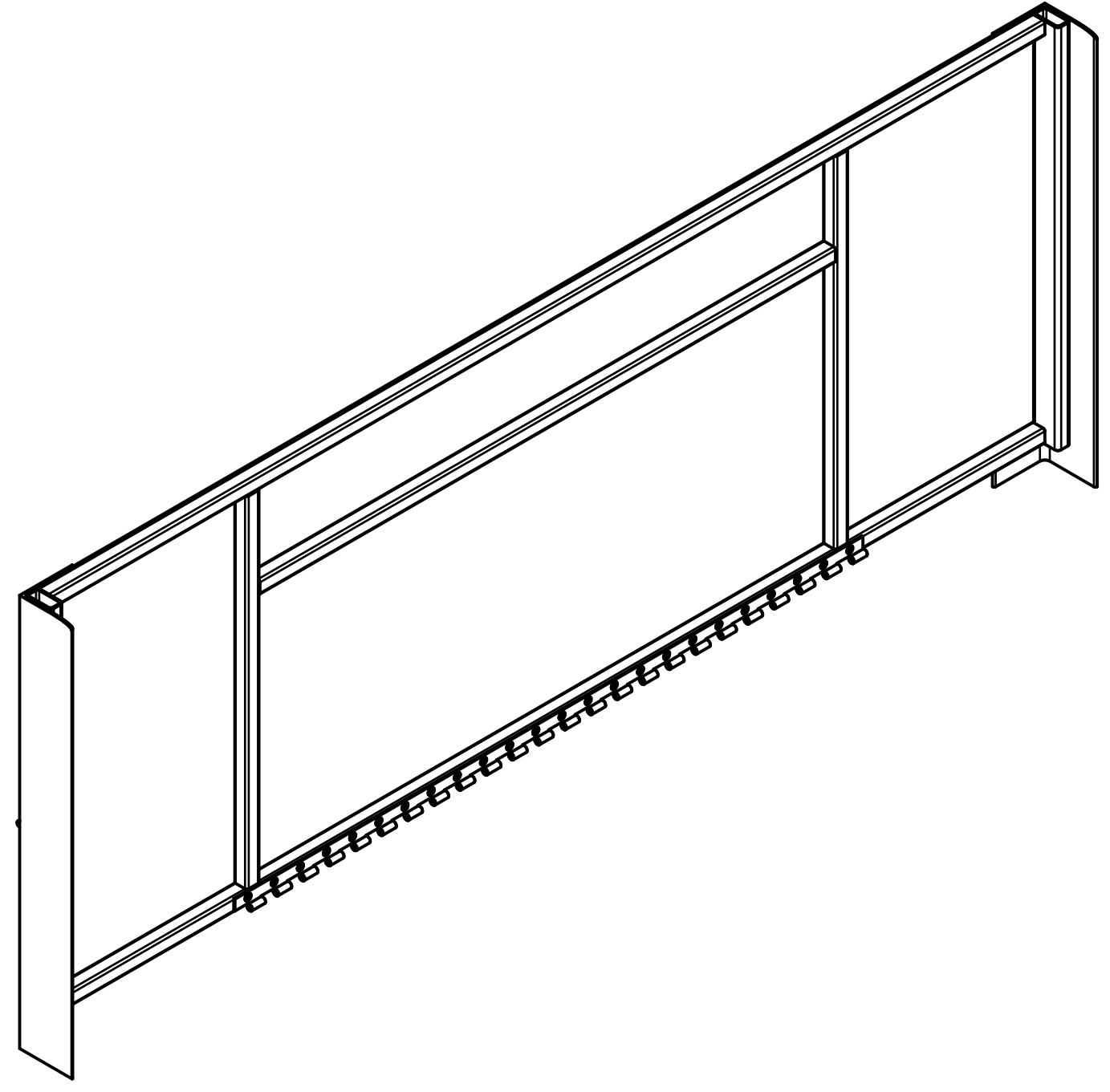
THESE DIMS ARE ALL NOMINAL CUT TO FIT PAINT TO MATCH



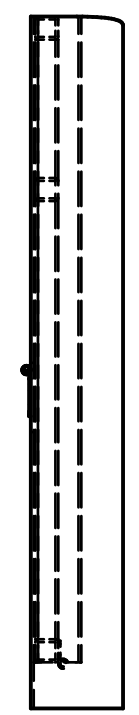
UPPER FOLDING SIDE  
SCALE 1/6  
1 SHOWN 2 REQUIRED

DRAWN	BDO	8/8/2020		
CHECKED			TITLE	
QA				
MFG				
APPROVED				
			SIZE	DWG NO
			D	Camper plans
			SCALE	REV
			1/6	
			SHEET 7 OF 12	

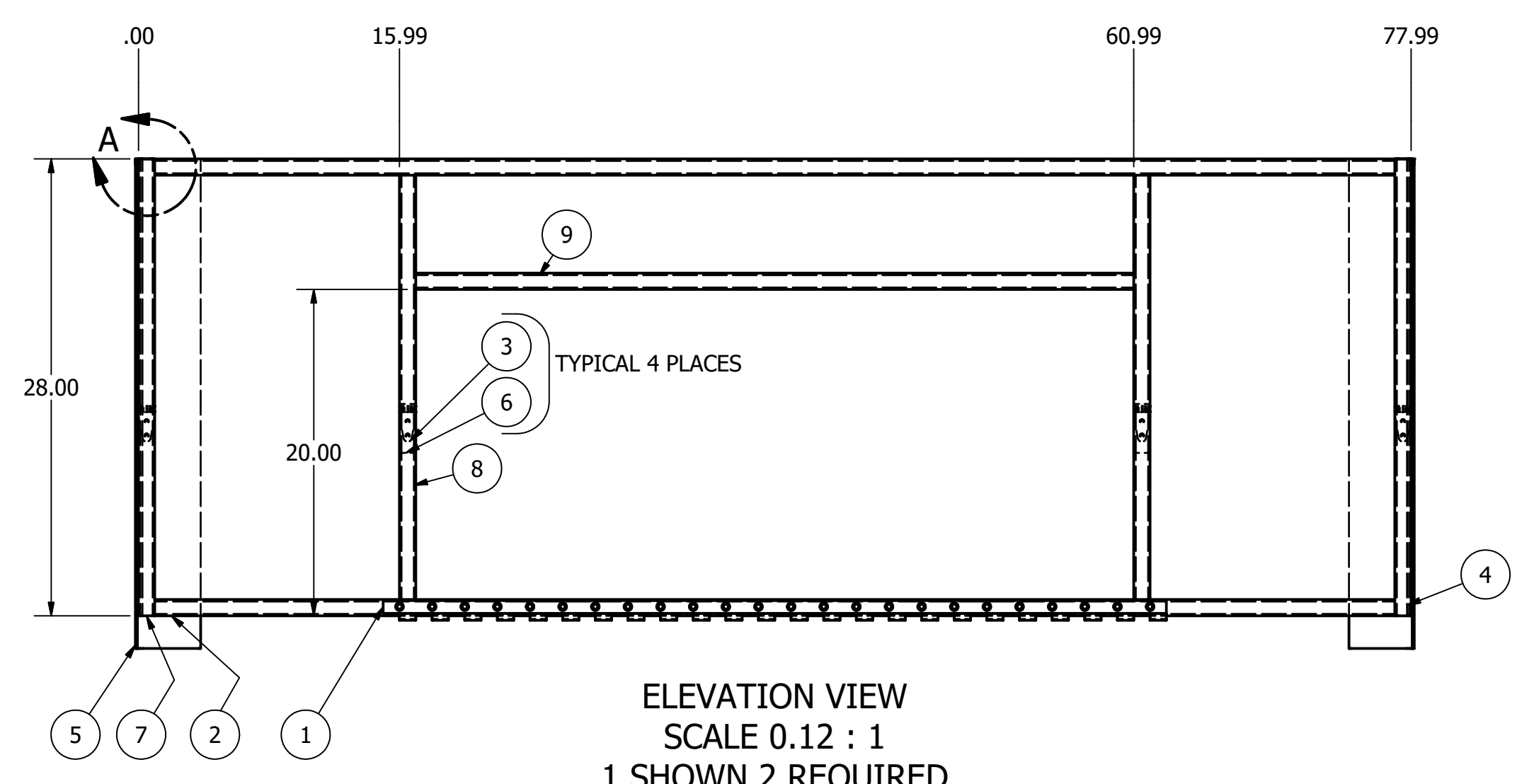
PARTS LIST		
ITEM	ITEM QTY	PART NUMBER
1	1	1575A918_SURFACE-MOUNT PIANO HINGE WITH HOLES (1)
2	2	ASTM A513 - 1 x 1 x 3/25 - 76.000
3	4	1528A180_STRAP HINGE
4	1	SHEET METAL 28 X 77.500 X 0.0625
5	2	AISC - L 4 x 4 x 1/8 - 30
6	2	SHEET METAL 1 X 3 X 0.125
7	2	AISC HSS - 2 x 1 x 1/8 - 28
8	2	ASTM A513 - 1 x 1 x 3/25 - 26
9	1	ASTM A513 - 1 x 1 x 3/25 - 44.000



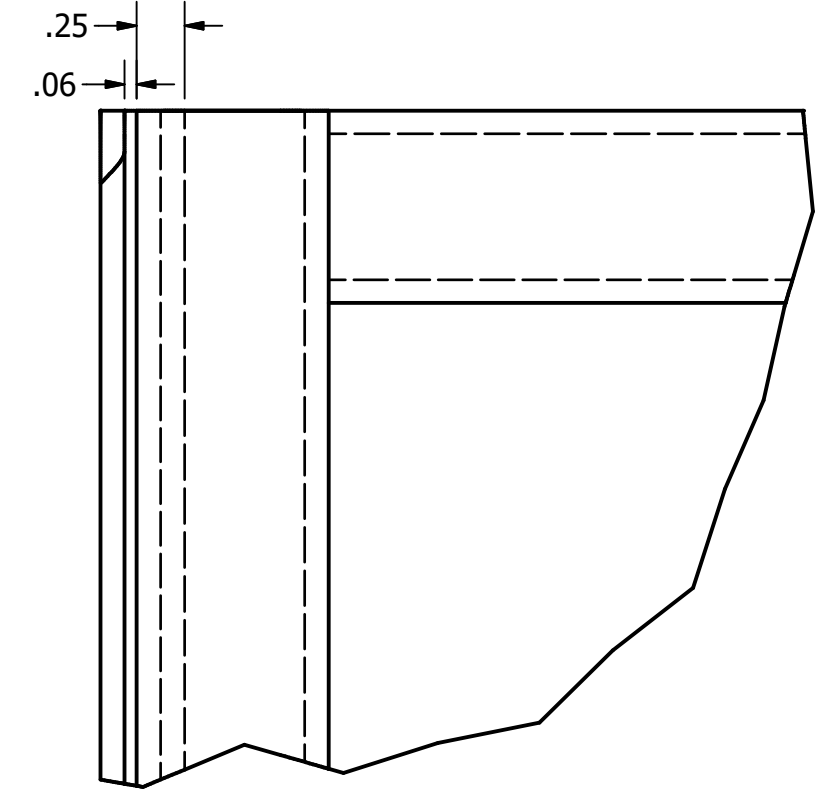
ISOMETERIC VIEW  
SCALE 0.12 : 1



END VIEW  
SCALE 0.12 : 1



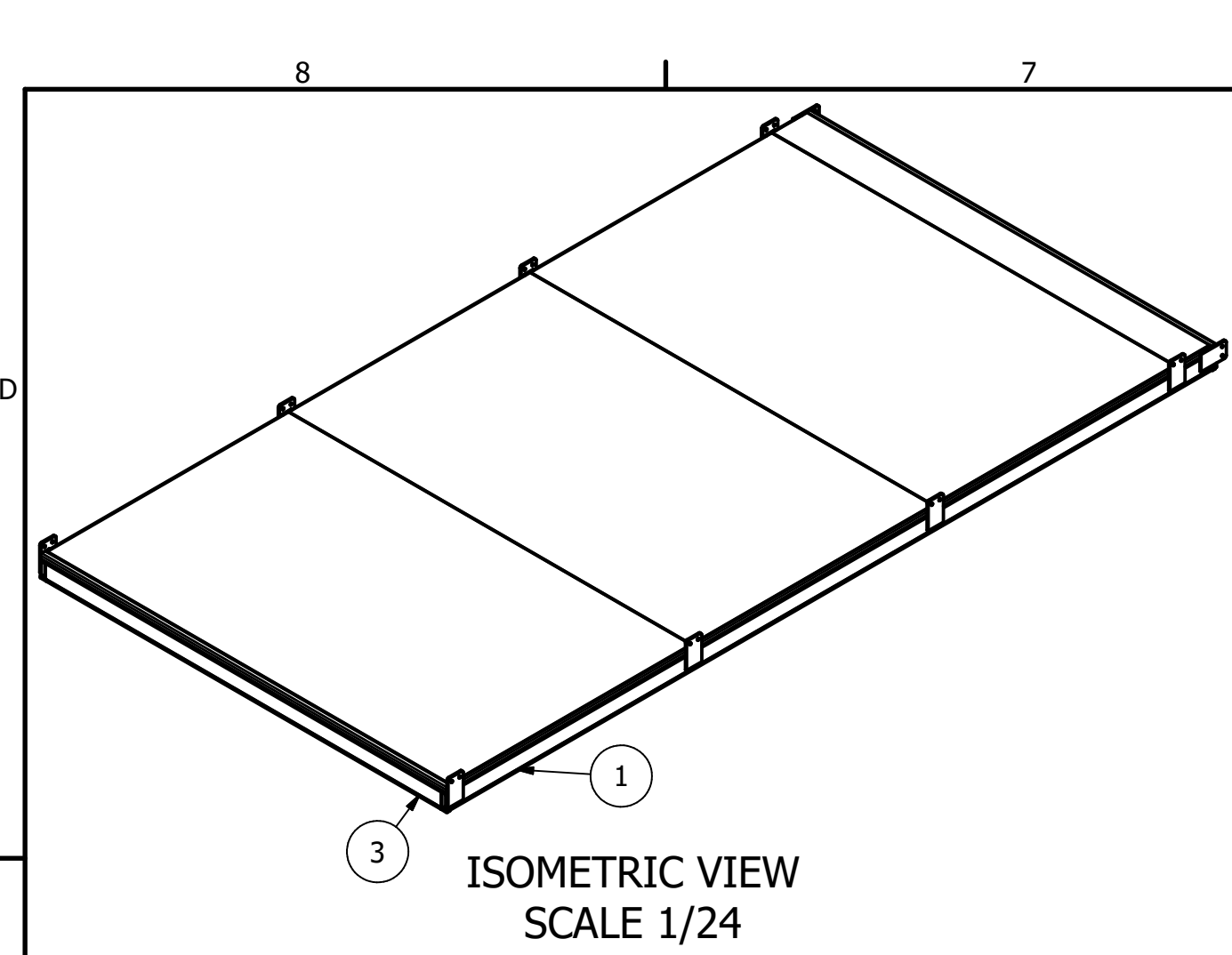
ELEVATION VIEW  
SCALE 0.12 : 1  
1 SHOWN 2 REQUIRED



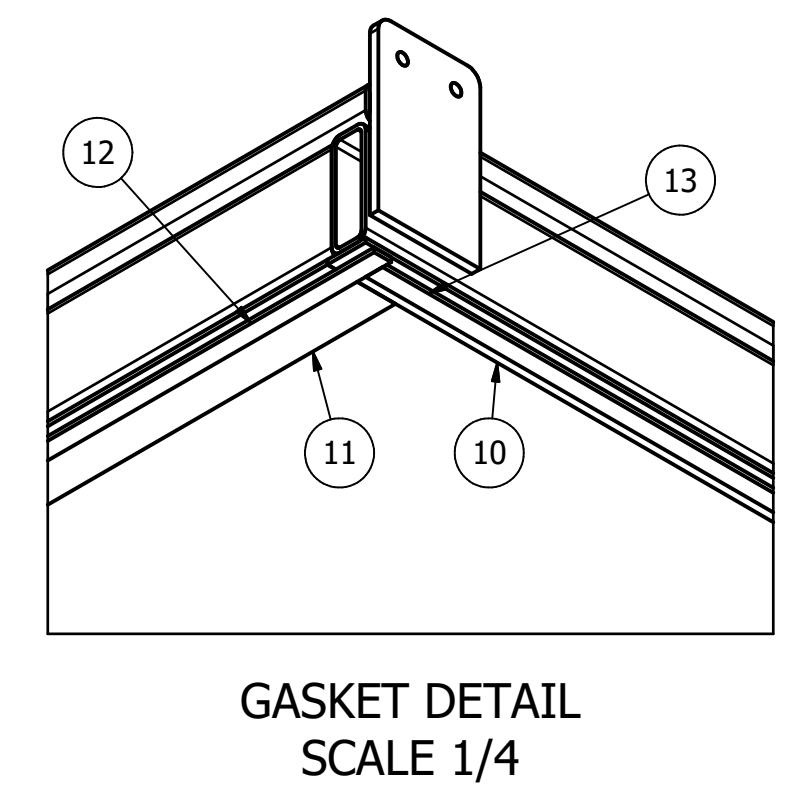
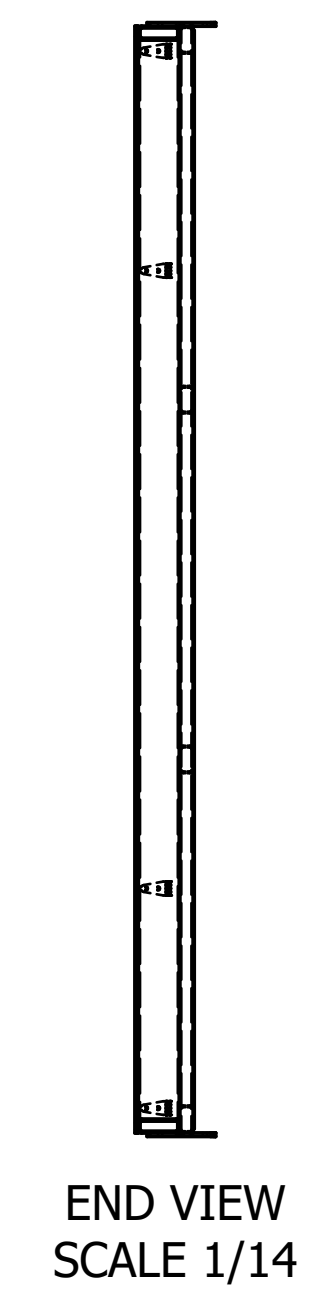
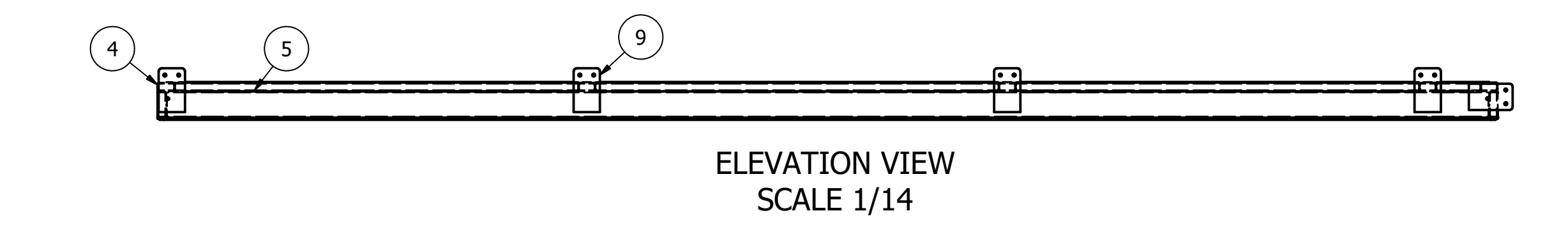
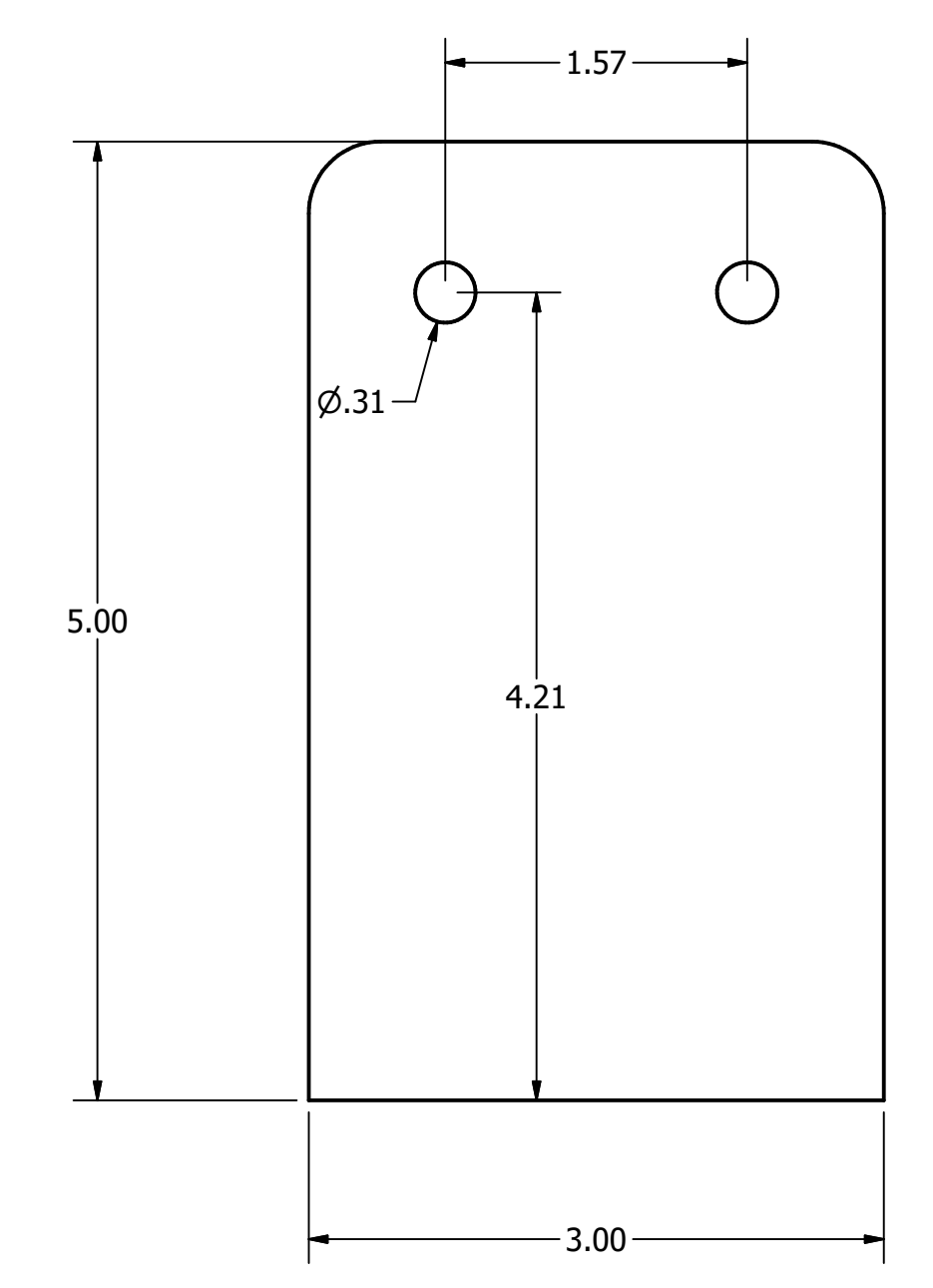
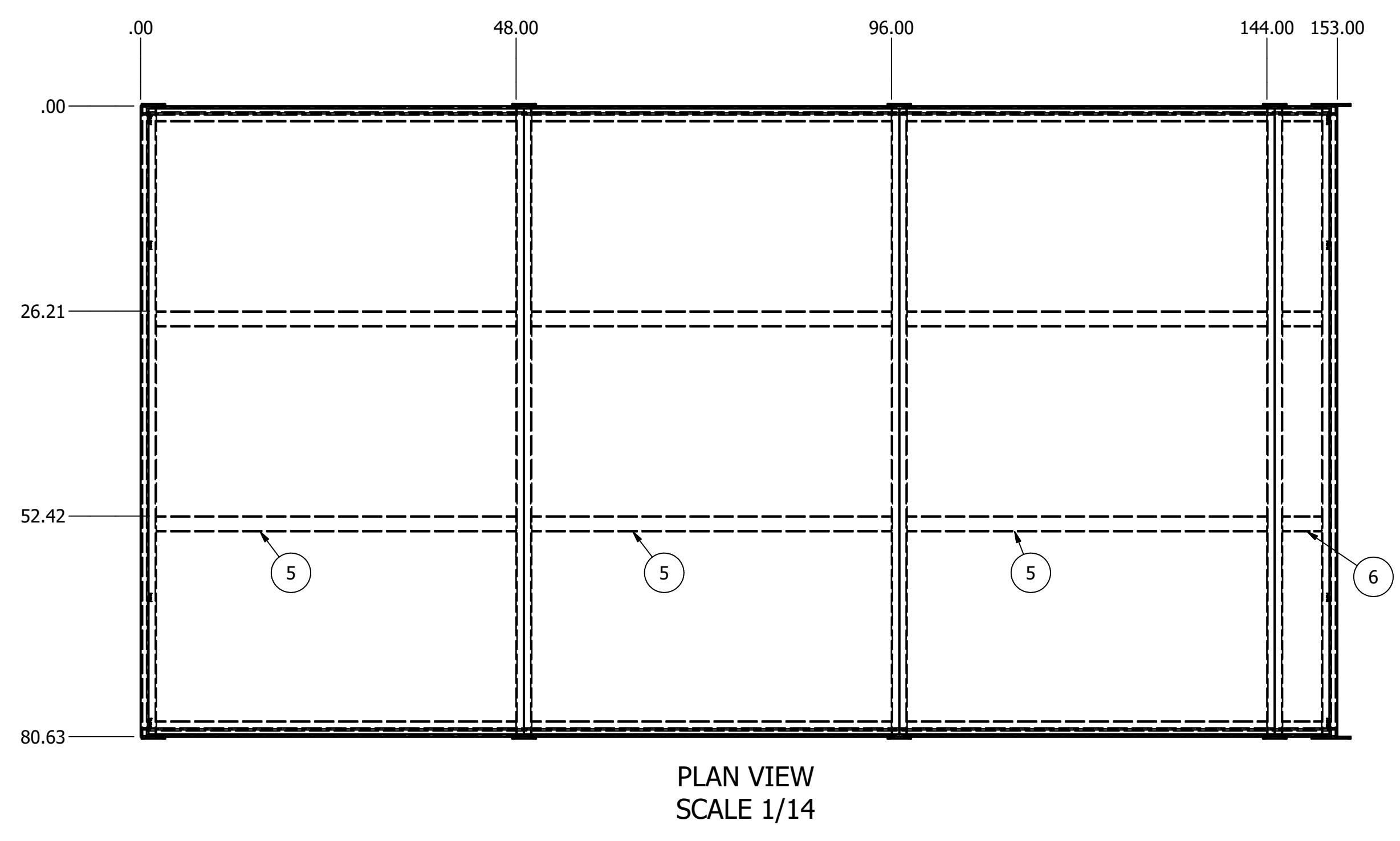
DETAIL A  
SCALE 1/1

DRAWN	BDO	8/8/2020		
CHECKED			TITLE	
QA				
MFG				
APPROVED				
			SIZE	DWG NO
			D	Camper plans
			SCALE	REV
			0.12 : 1	
			SHEET 8 OF 12	





PARTS LIST		
ITEM	ITEM QTY	PART NUMBER
1	2	AISC HSS - 3 x 1 x 1/8 - 153
2	8	1528A180_STRAP HINGE
3	2	AISC HSS - 3 x 1 x 1/8 - 78.625
4	5	AISC HSS - 2 x 1 x 1/8 - 80.625
5	12	AISC HSS - 2 x 1 x 1/8 - 46
6	4	AISC HSS - 2 x 1 x 1/8 - 5
7	3	SHEET METAL 48 X 80 X 0.0625
8	1	SHEET METAL 7 X 80 X 0.0625
9	10	SHEET METAL 3 X 5 X 0.25
10	2	SHEET METAL 1.125 X 153.000 X 0.125
11	2	SHEET METAL 2 X 78.375 X 0.125
12	2	SHEET METAL .5 X 80.625 X 0.125
13	2	SHEET METAL .5 X 151.500 X 0.125



DRAWN	8/8/2020	TITLE	
CHECKED		TITLE	
QA		TITLE	
MFG		TITLE	
APPROVED		TITLE	
		SIZE	DWG NO
		D	Camper plans
		SCALE	REV
		1/14	
		SHEET 9 OF 12	

8

7

6

5



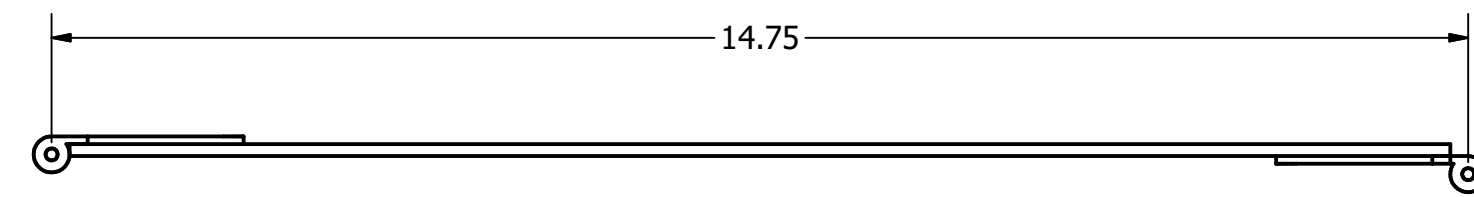
4

3

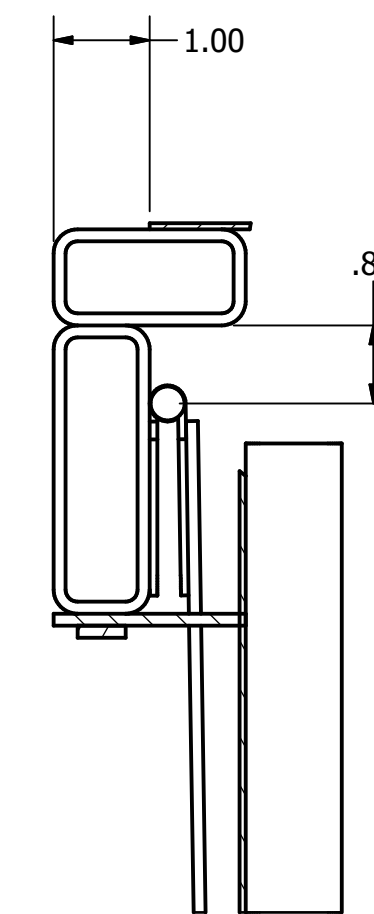
2

1

PARTS LIST		
ITEM	ITEM QTY	PART NUMBER
1	2	1528A180_STRAP HINGE (1)
2	1	SHEET METAL 1.0 X 14.375 X 0.125



END VIEW  
SCALE 1 / 2  
1 SHOWN 8 REQUIRED



SECTION LIFTER DIM DETAIL-LIFTER DIM DETAIL  
SCALE 1/2

DRAWN	8/8/2020		
CHECKED		TITLE	
QA			
MFG			
APPROVED			
		SIZE	DWG NO
		D	Camper plans
		SCALE	REV
		1 / 2	

8

7

6

5



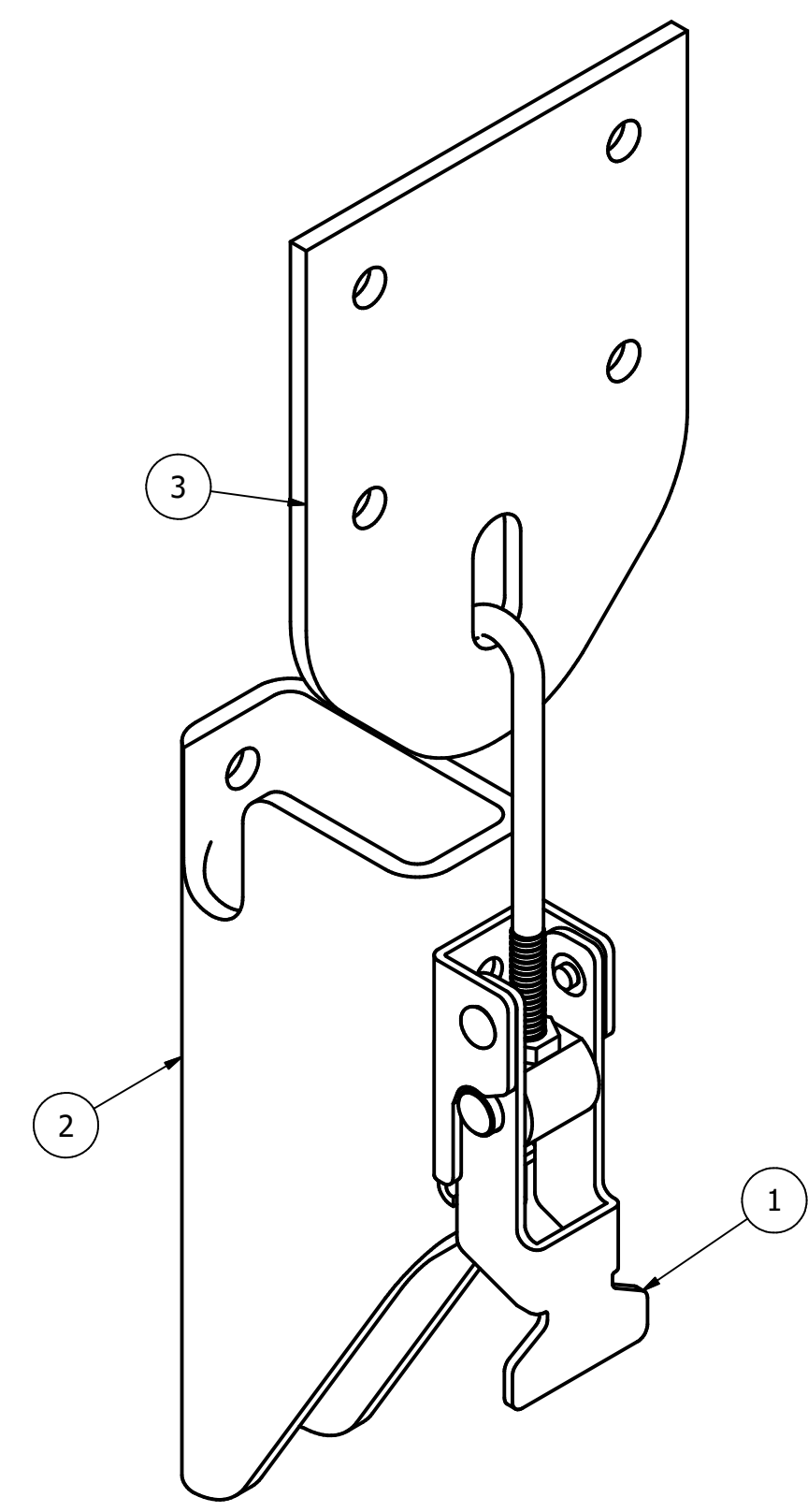
4

3

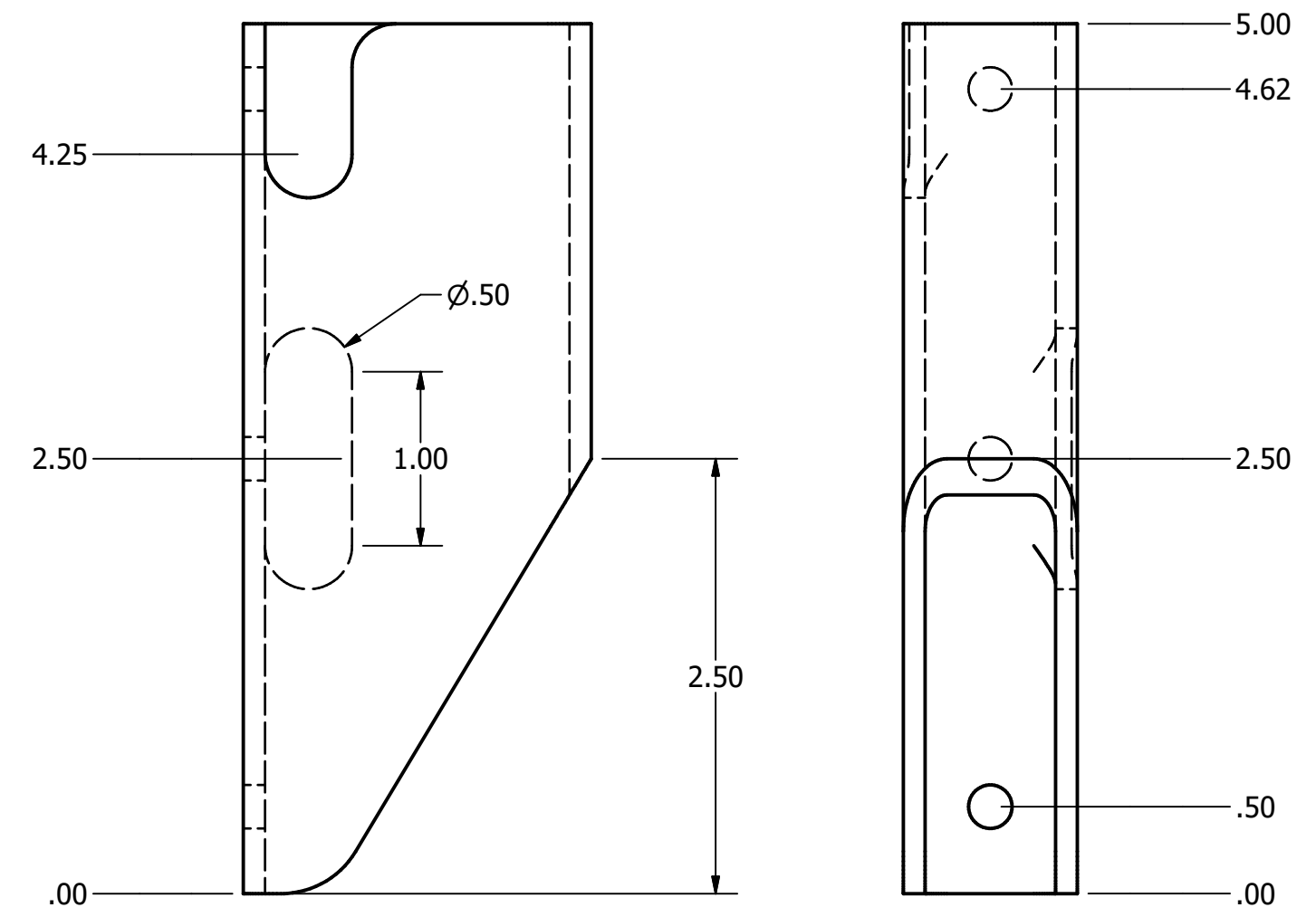
2

1

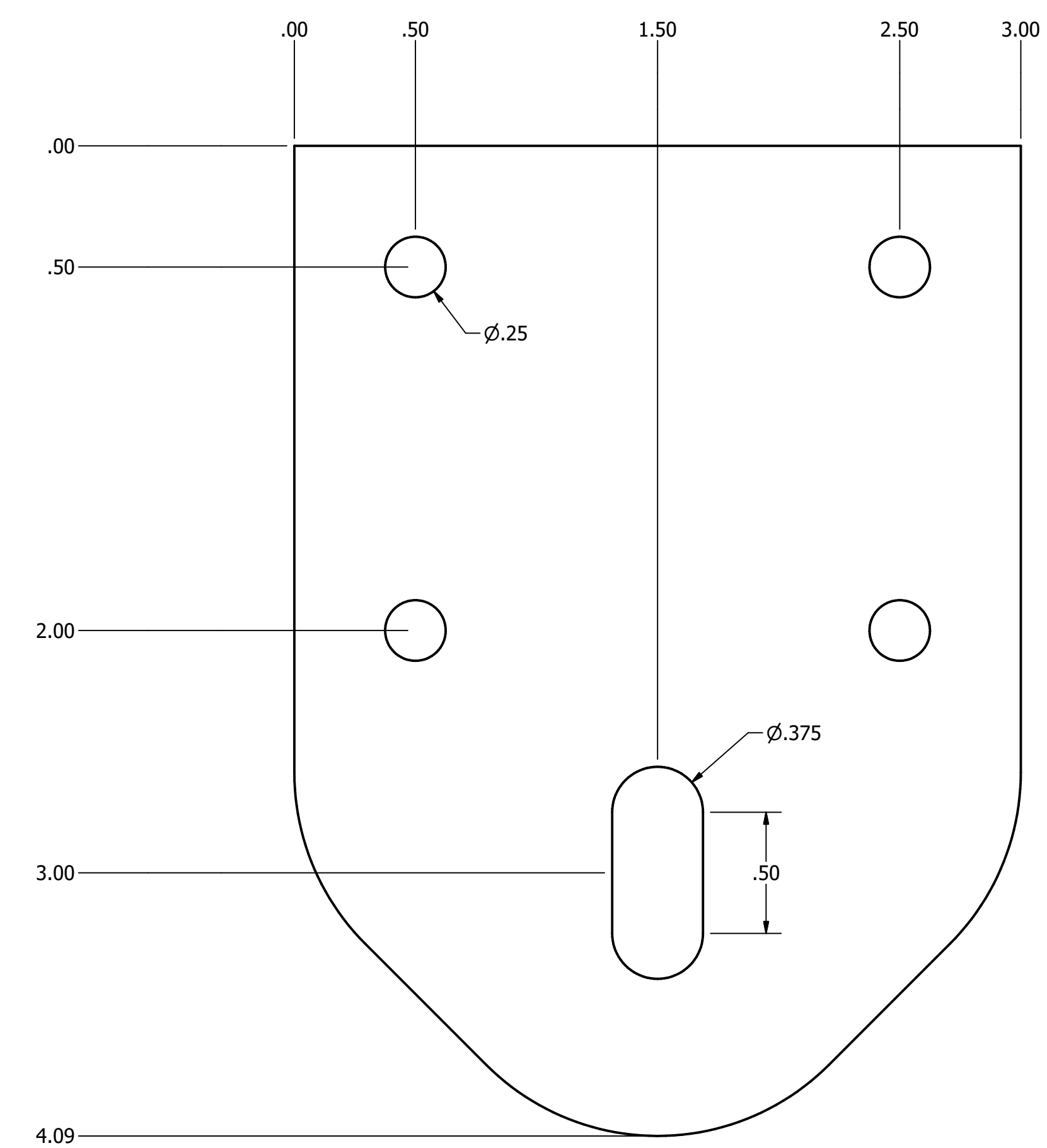
PARTS LIST		
ITEM	ITEM QTY	PART NUMBER
1	1	11605A230_ADJUSTABLE-GRIP DRAW LATCH
2	1	AISC HSS - 2 x 1 x 1/8 - 5
3	1	SHEET METAL 3 X 4.5 X 0.125



ISOMETRIC VIEW  
SCALE 1 : 1



BASE PLATE  
SCALE 1 : 1

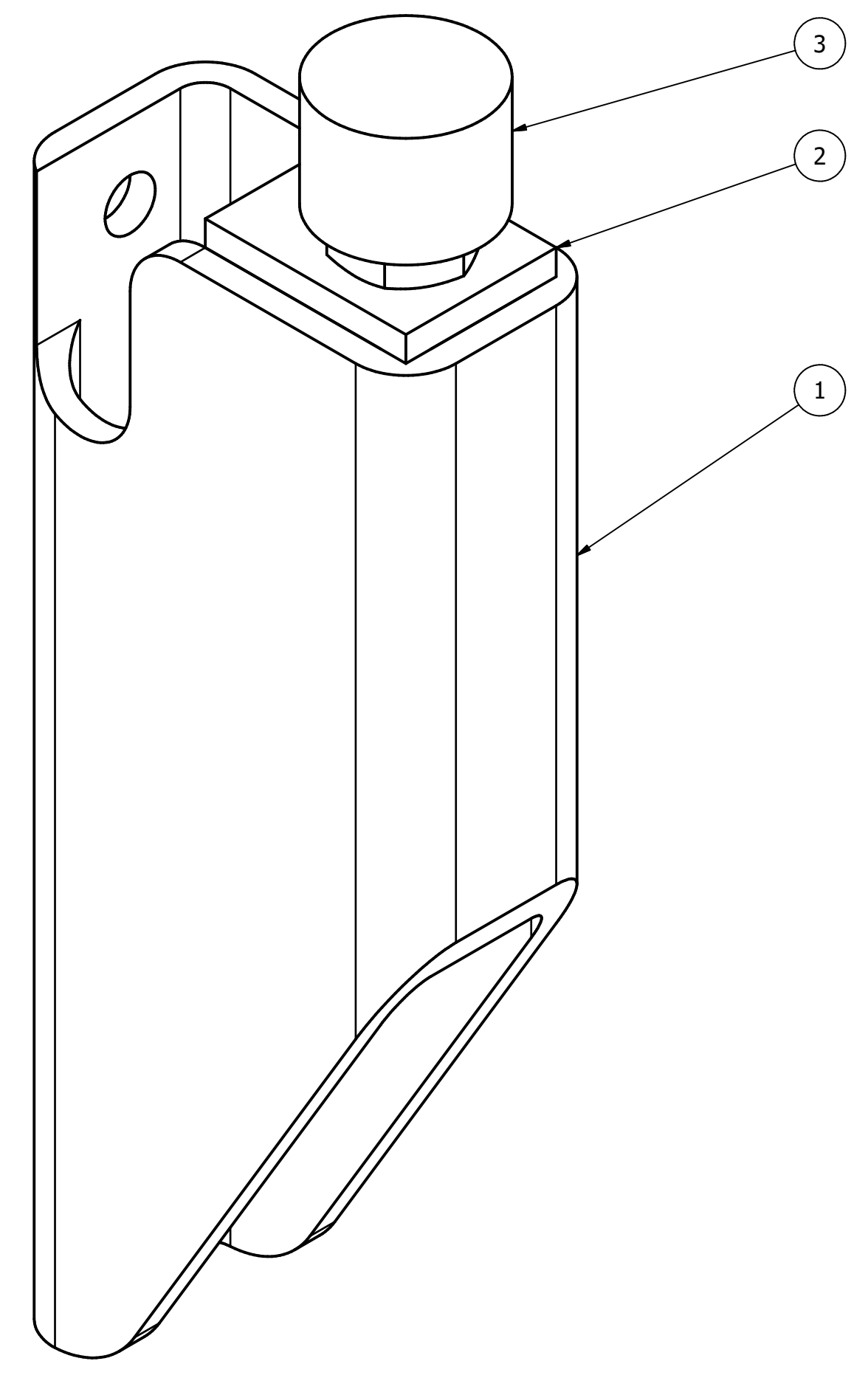


DRAW PLATE  
SCALE 2:1

1 SHOWN 4 REQUIRED

DRAWN	BDO	8/8/2020		
CHECKED			TITLE	
QA				
MFG				
APPROVED				
			SIZE	DWG NO
			D	Camper plans
			SCALE	1 : 1
				SHEET 11 OF 12

PARTS LIST		
ITEM	ITEM QTY	PART NUMBER
1	1	AISC HSS - 2 x 1 x 1/8 - 5
2	1	SHEET METAL 1 X .75 X 0.125
3	1	9546K124_METAL-CORE BUMPER



END STOP  
SCALE 2:1

DRAWN	8/8/2020		
CHECKED		TITLE	
QA			
MFG			
APPROVED			
		SIZE	DWG NO
		D	Camper plans
		SCALE	REV
		2:1	