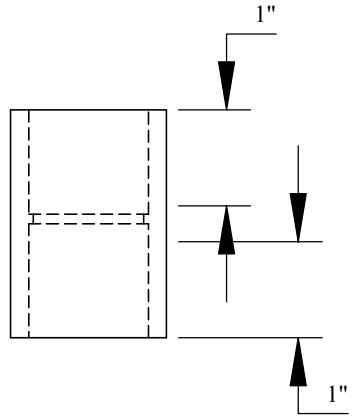
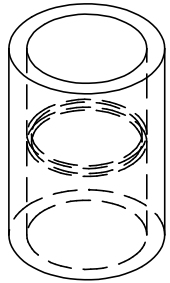


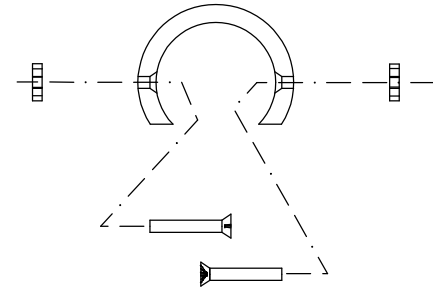
1



1" PVC Coupling

Cut 1" from each end of the coupling. One piece will be used for the Carriage Sleeve Spring Mount, the other will be used for the Carriage Sleeve Axle Pin Mount.

3

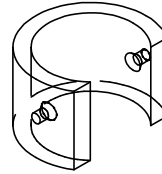
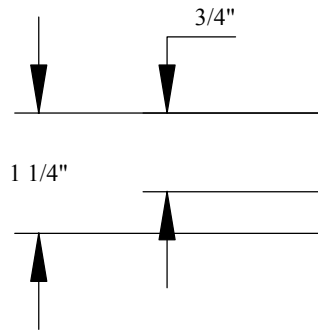


Hardware:

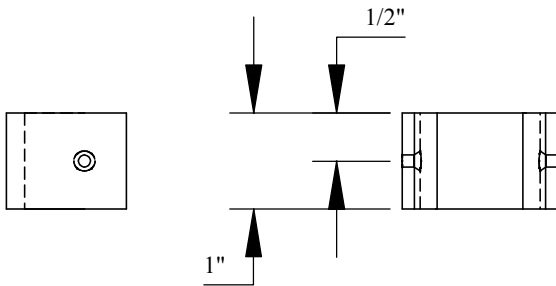
2 - #6-32 x 3/4" Flat head machine screws.

2 - #6-32 Nuts

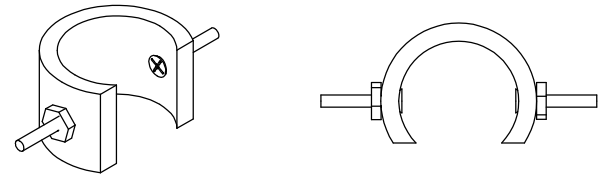
2



1/8" Dia Hole
Countersink for #6
Screw if possible.
(See tip 1)



4



Tip 1:

Apply a small amount of PVC cement on the inside of the screw head before inserting the screw in the hole. The glue will soften the plastic enough to allow the screw to sink into the pipe when the nut is tightened.

Carriage Sleeve Spring Mount - Detail

Materials List:

1 - 1" PVC Coupling

2 - #6-32 x 3/4" Flat heat machine screws

2 - #6-32 Nuts