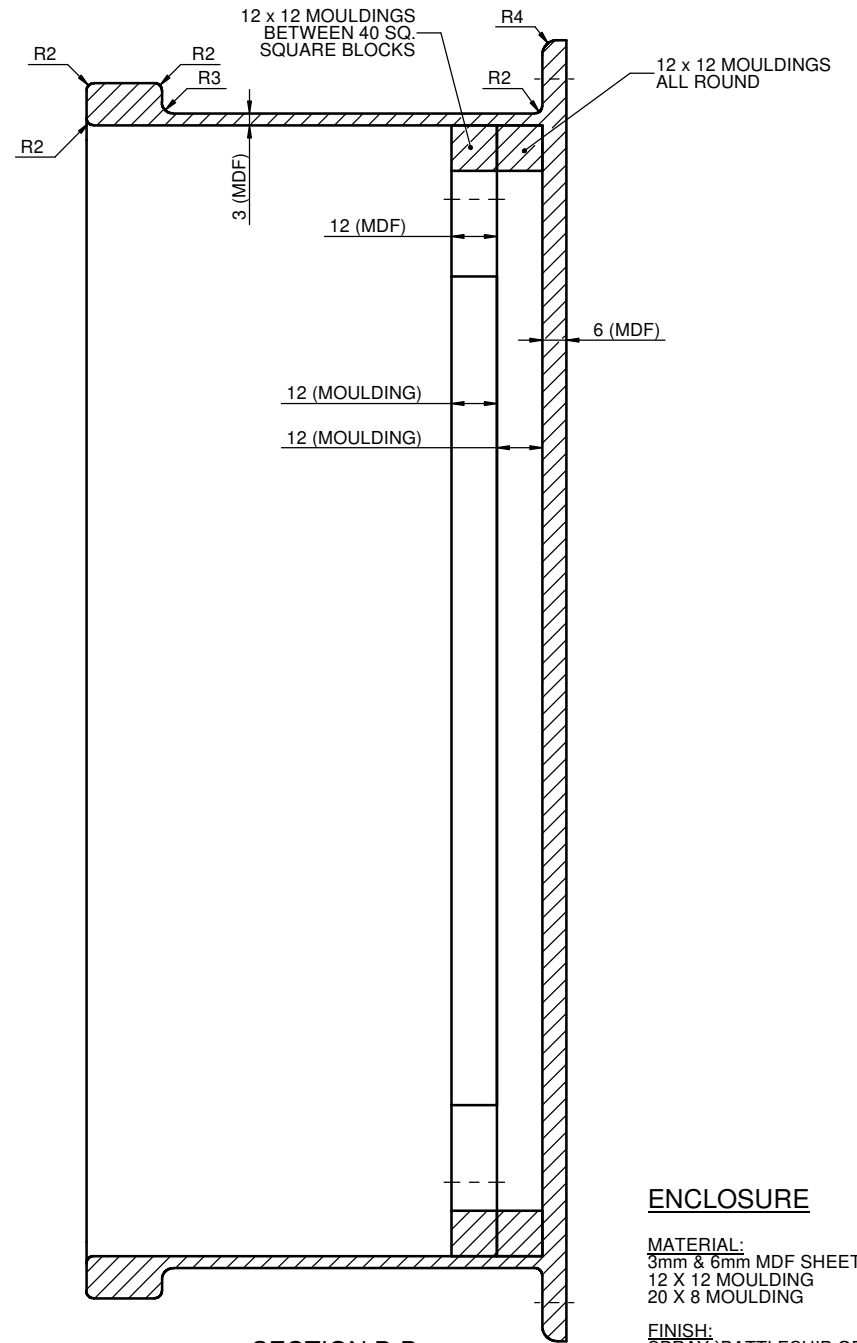
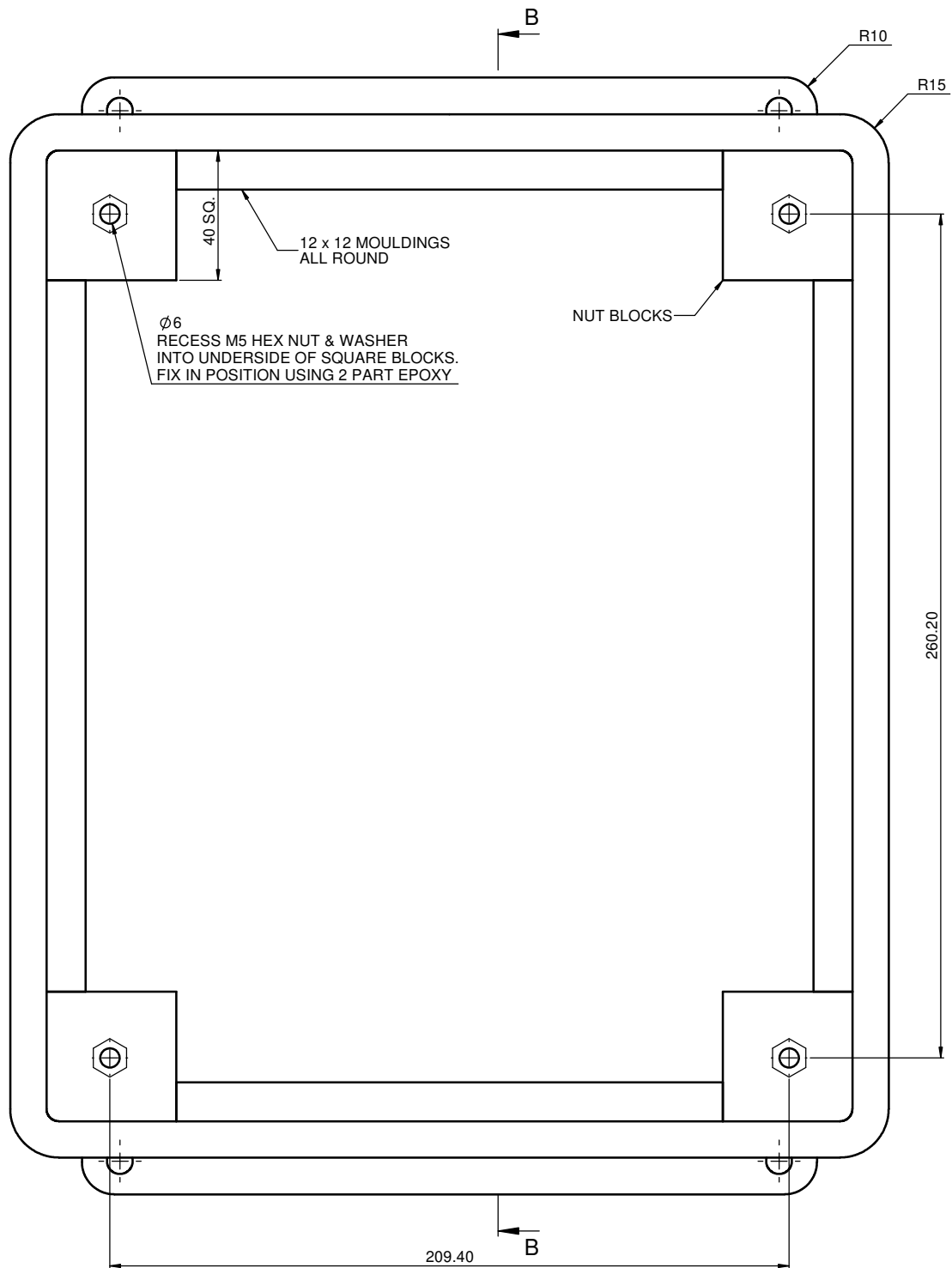


DISCONNECT CAPACITOR DRIVE
BEFORE OPENING

SHIELD EYES FROM LIGHT

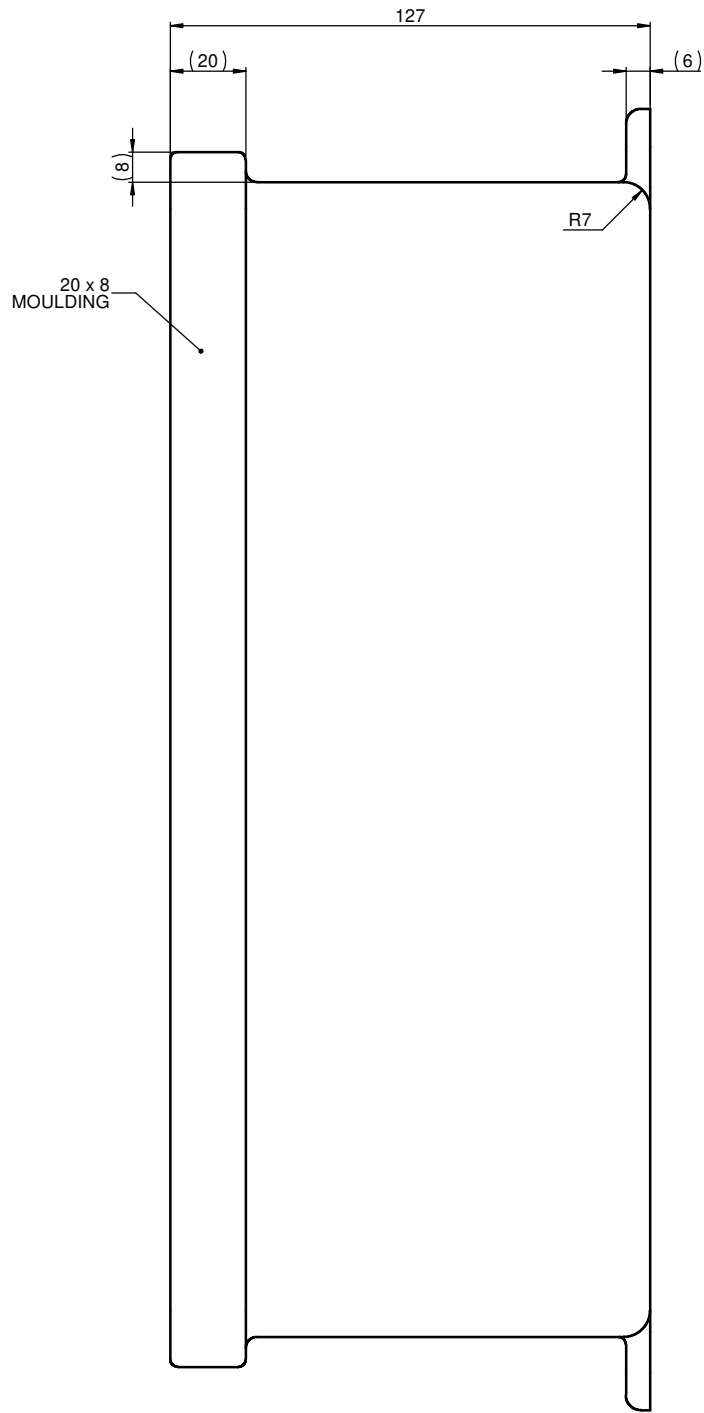


SECTION B-B
SCALE 1:1

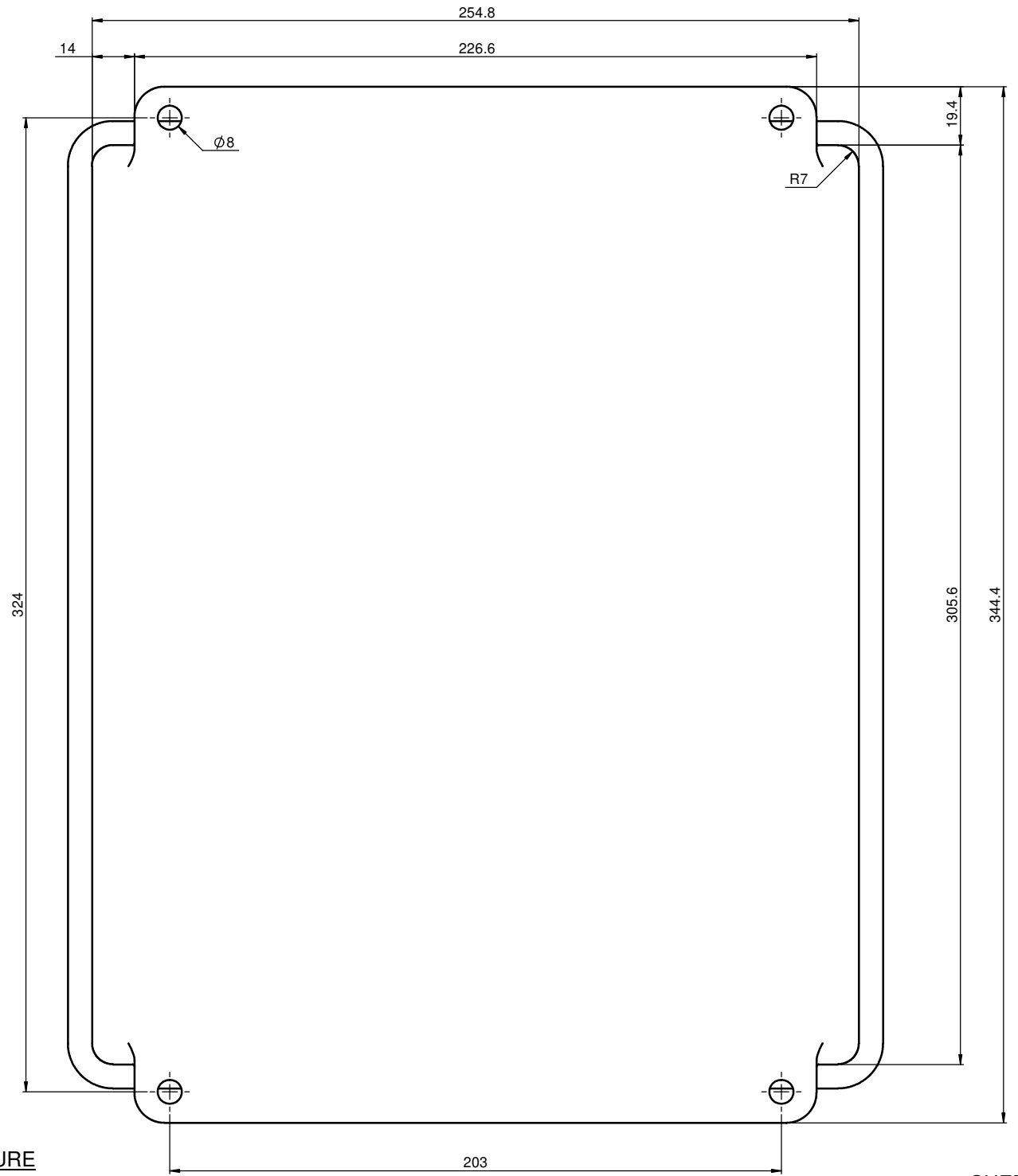
ENCLOSURE

MATERIAL:
 3mm & 6mm MDF SHEET.
 12 X 12 MOULDING
 20 X 8 MOULDING

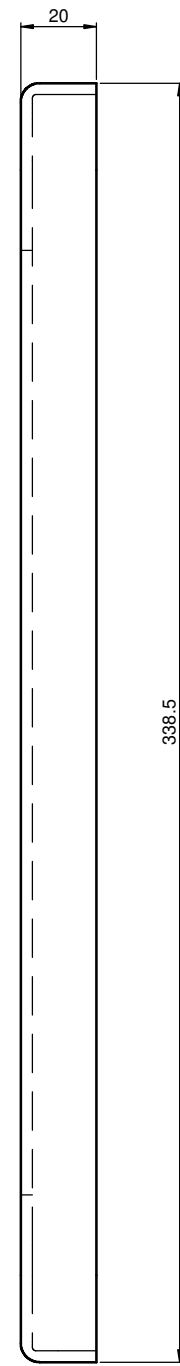
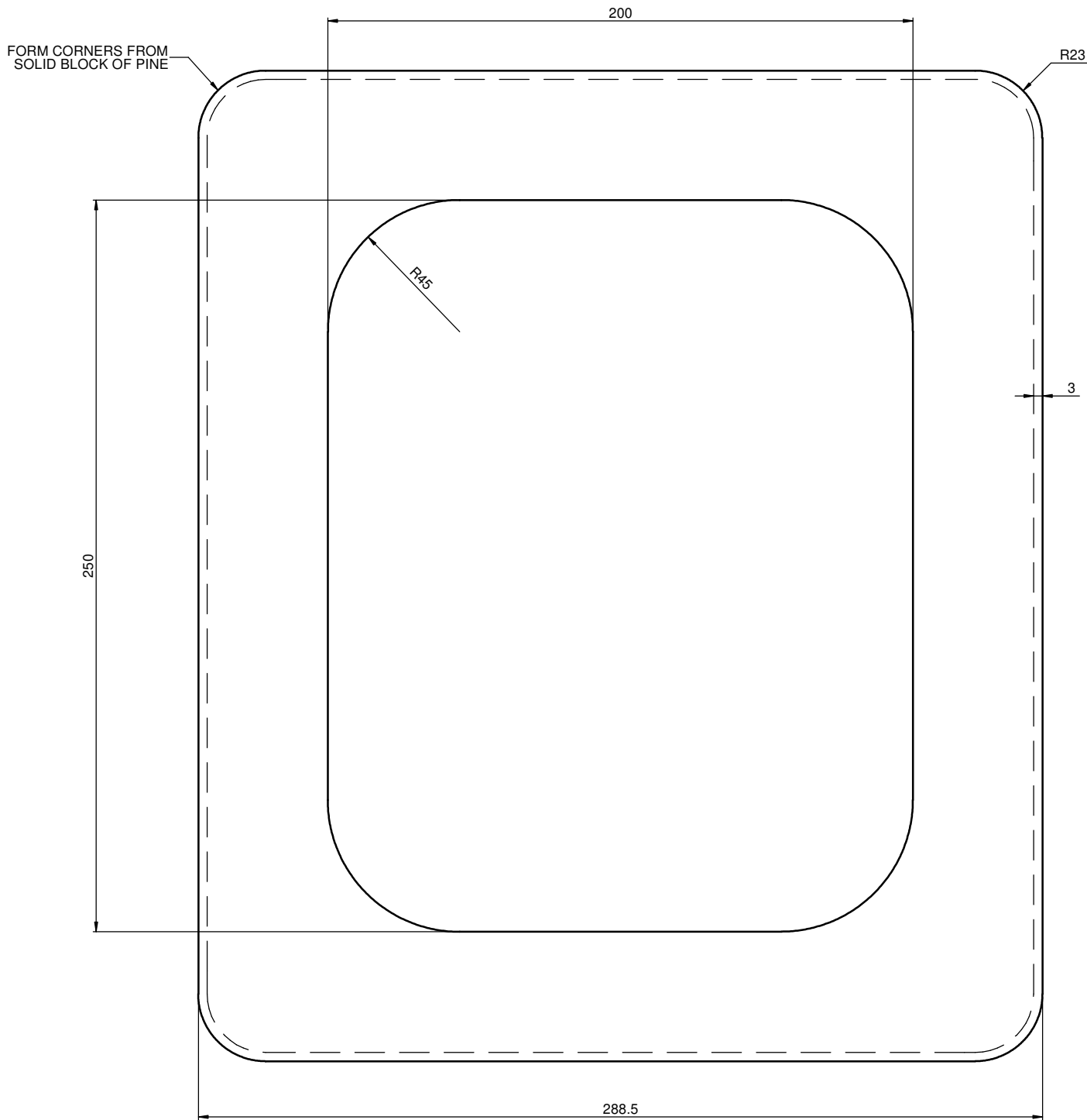
FINISH:
 SPRAY 'BATTLESHIP GREY'



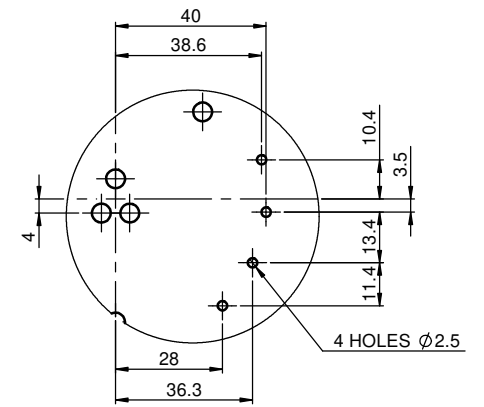
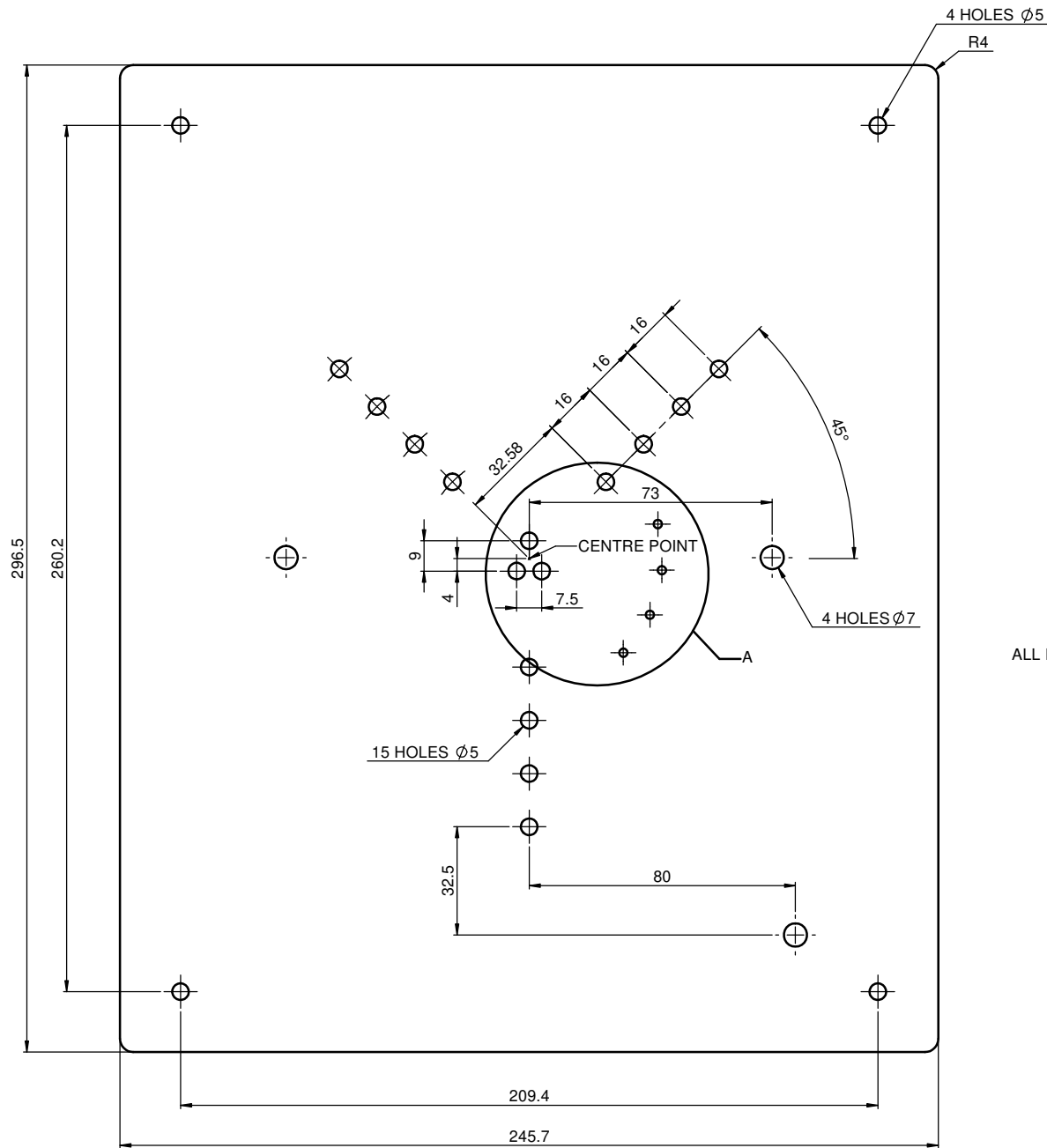
ENCLOSURE



SHEET 3



LID
MATERIAL:
3mm MDF SHEET.
FINISH:
SPRAY 'BATTLESHIP GREY'



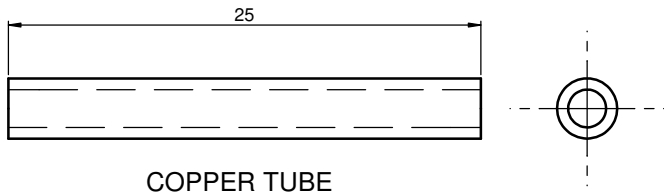
DETAIL A
 SCALE 1 : 1

ALL DIMENSIONS EQUAL ABOUT CENTRE POINT

BACKBOARD

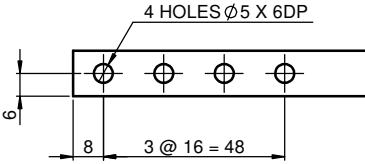
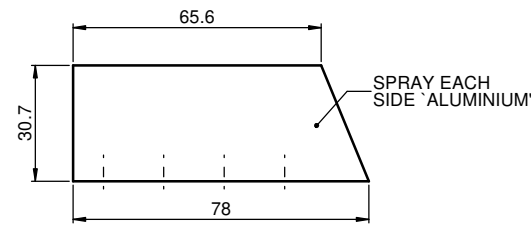
MATERIAL:
 3mm MDF.

FINISH:
 SPRAY 'BATTLESHIP GREY'



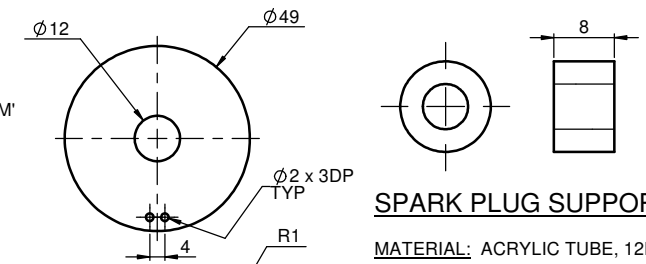
COPPER TUBE

MATERIAL: COPPER TUBE, 3.18MM OD X 2MM ID



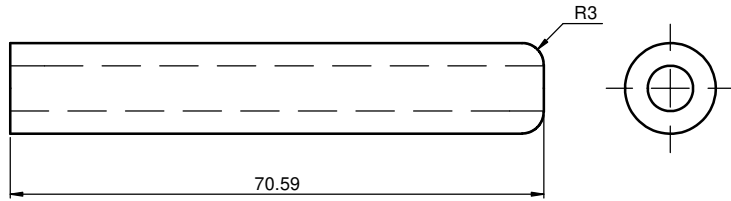
LIGHT BLOCK

MATERIAL: 12mm ACRYLIC SHEET.
FINISH: POLISH ALL CUT FACES TO CLEAR. PAINT AS SPECIFIED.



SPARK PLUG SUPPORT TUBE

MATERIAL: ACRYLIC TUBE, 12MM OD X 6MM ID.



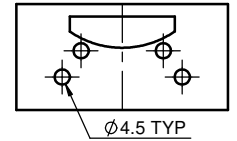
LONG TUBE

MATERIAL: ACRYLIC TUBE, 12MM OD X 6MM ID.
FINISH: POLISH ALL CUT FACES TO CLEAR.

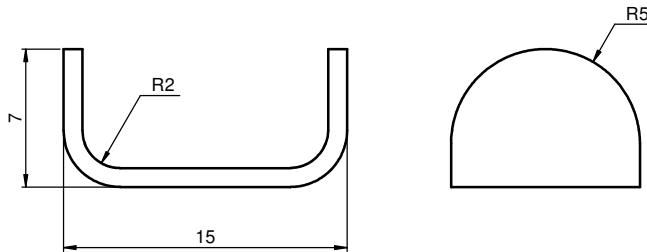


RELAY BASE

MATERIAL: TO SUIT.
FINISH: SPRAY 'BRASS' COLOUR.

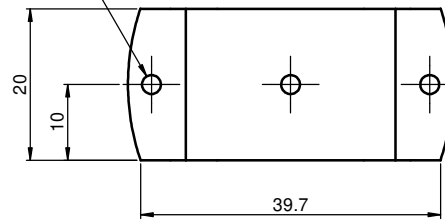
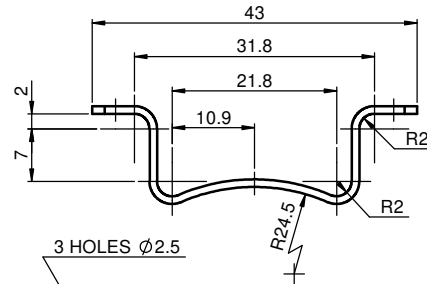


RELAY SADDLE BENDING JIG
PRINT AS FULL SIZE TEMPLATE



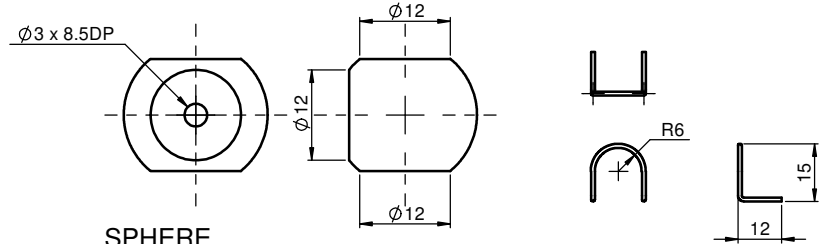
SADDLE

MATERIAL: 1MM THK ALUMINIUM.
FINISH: SPRAY 'BRASS' COLOUR.



RELAY SADDLE

MATERIAL: 1MM THK ALUMINIUM.
FINISH: SPRAY 'BRASS' COLOUR.

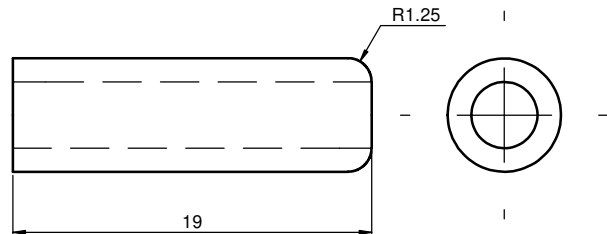


SPHERE

MATERIAL: ϕ 19.05mm (3/4") ACRYLIC BALL.
FINISH: POLISH ALL CUT FACES TO CLEAR.

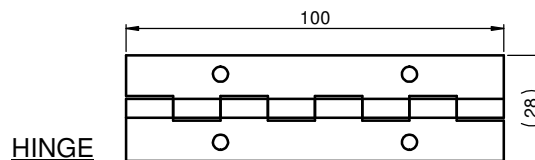
WIRE CLIP

MATERIAL: ϕ 1mm COPPER WIRE.
FINISH: NATURAL.



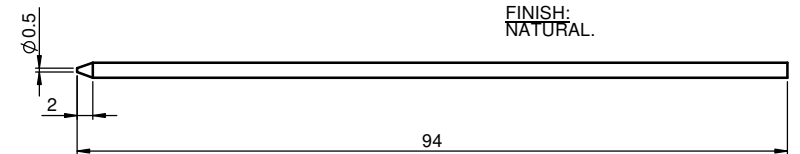
SHORT TUBE

MATERIAL: ACRYLIC TUBE, 6MM OD X 3.5MM ID.
FINISH: POLISH ALL CUT FACES TO CLEAR.



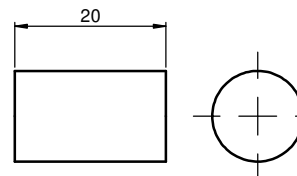
HINGE

MATERIAL: PART OF PIANO HINGE.
FINISH: NATURAL.



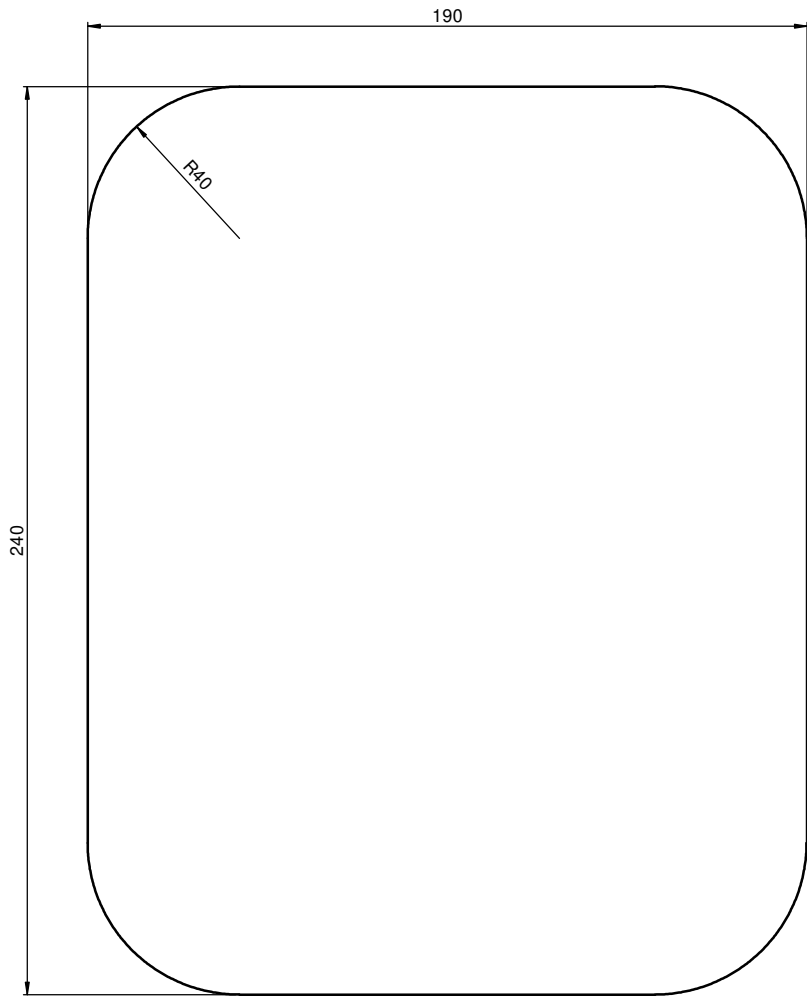
STEEL SHAFT

MATERIAL: ϕ 2mm STEEL ROD.
FINISH: NONE.



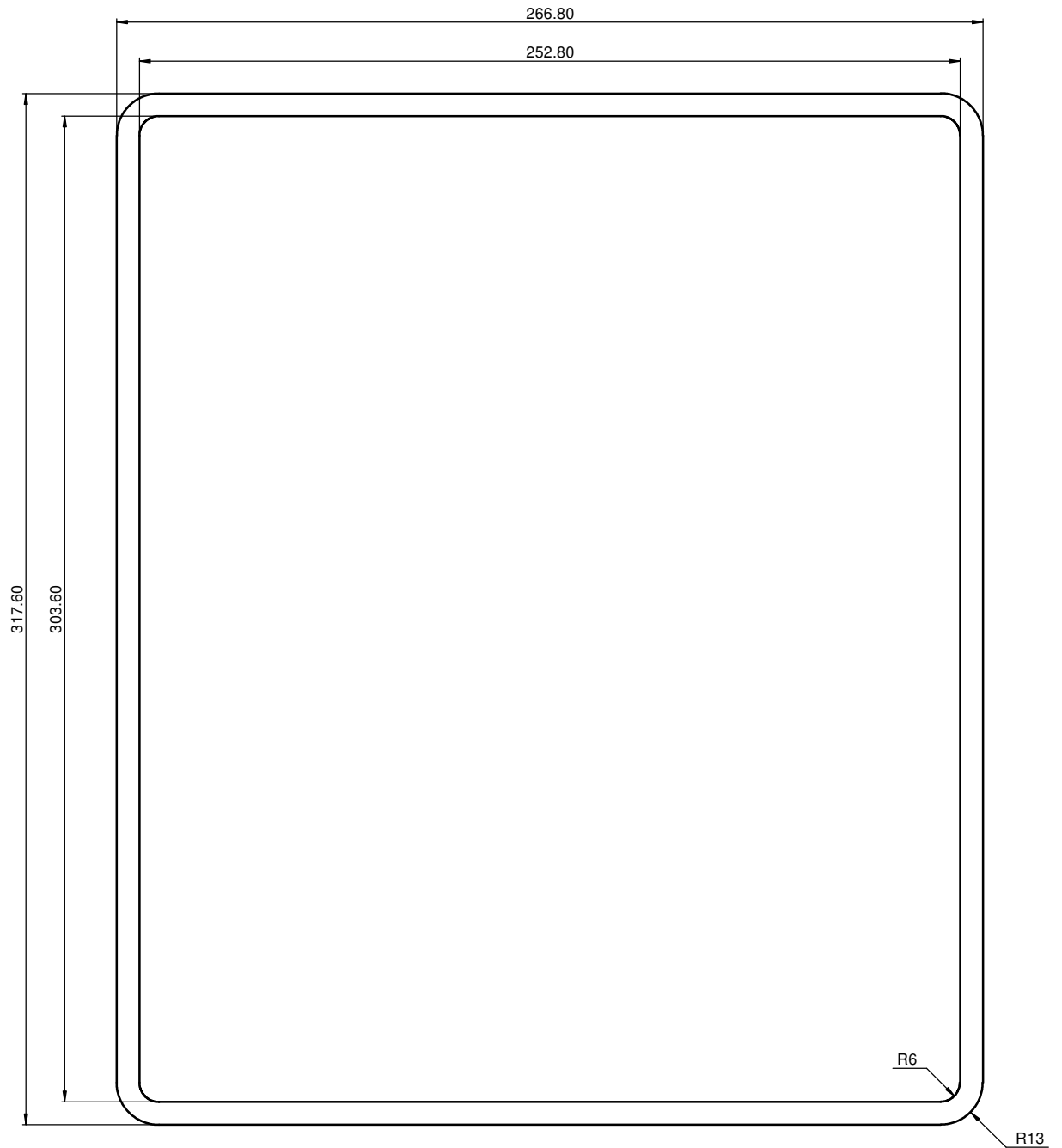
SUPPORT POST

MATERIAL: ACRYLIC ROD, 12MM.
FINISH: POLISH ALL CUT FACES TO CLEAR.



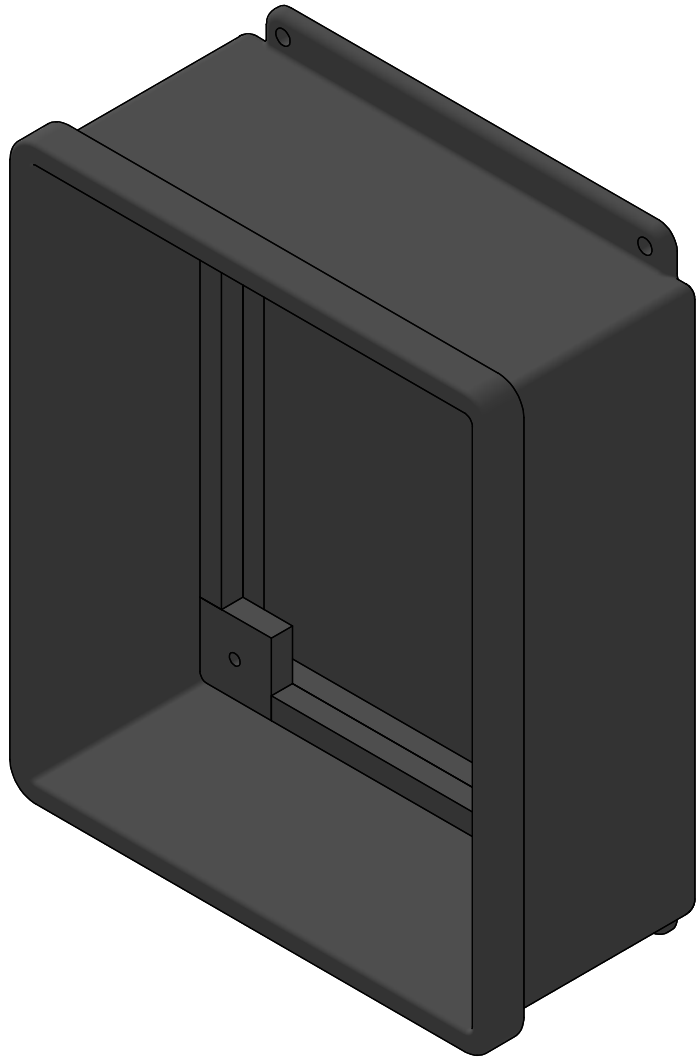
WINDOW

MATERIAL: ACRYLIC SHEET, 3MM THICK.



RUBBER GASKET

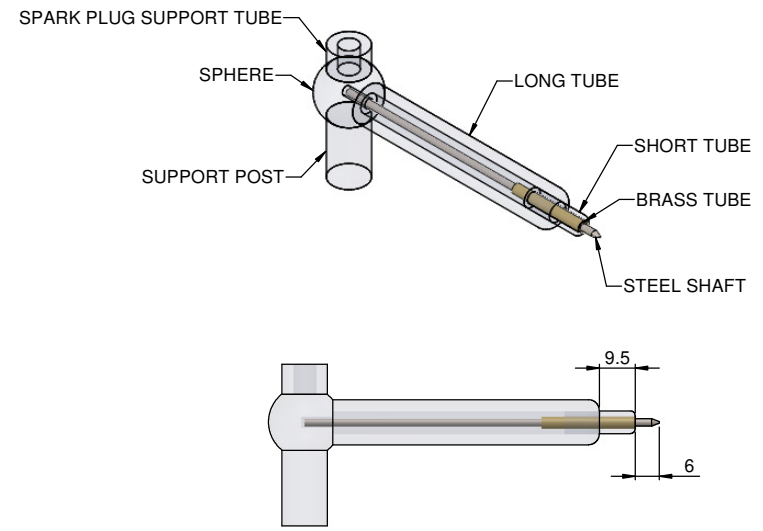
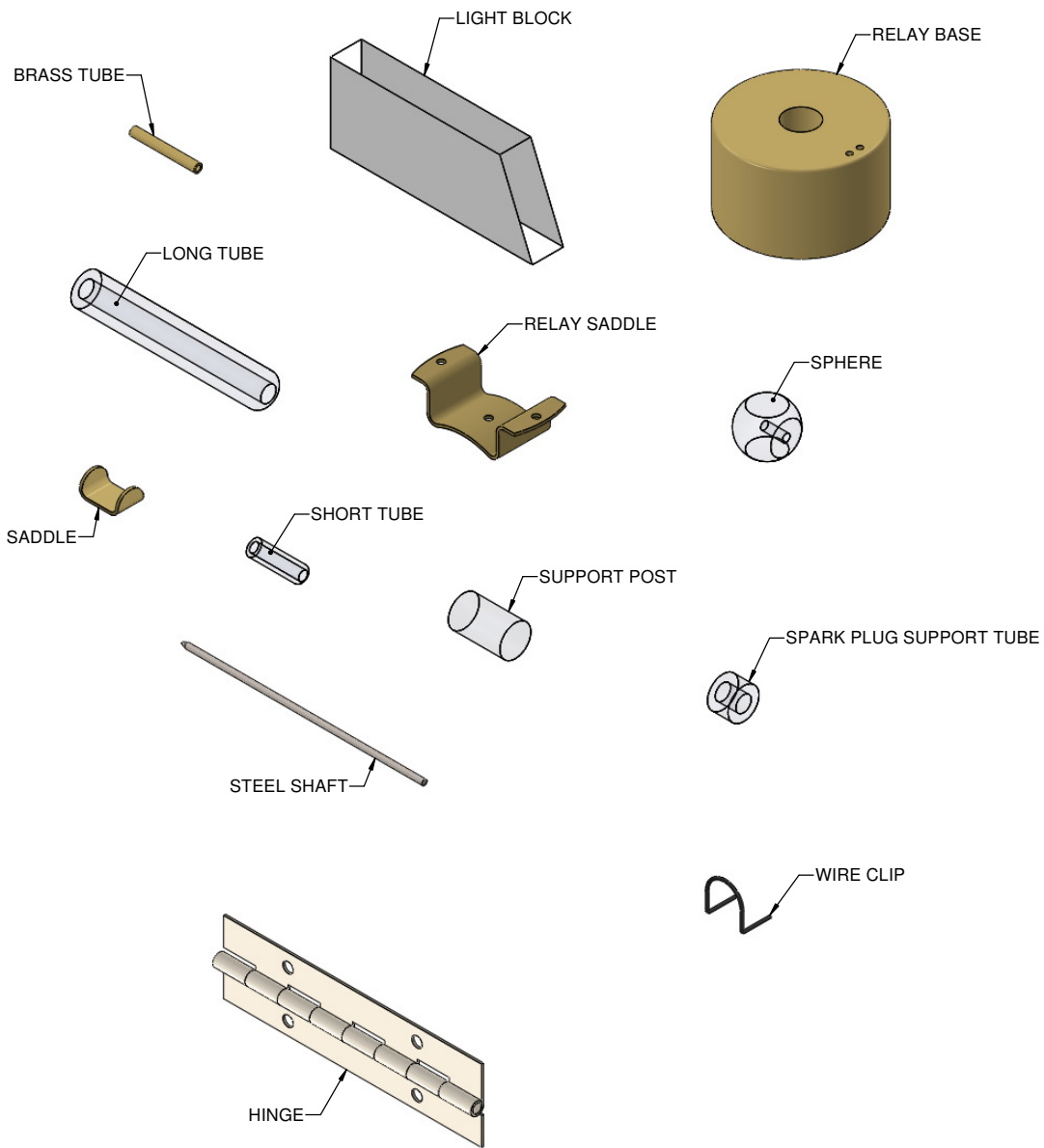
MATERIAL: RUBBER SHEET, 1.5MM THICK.



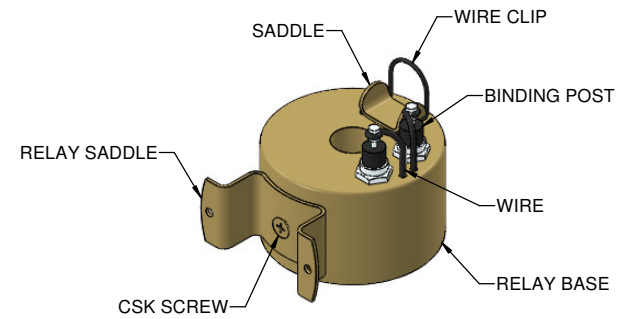
ENCLOSURE



LID



TUBE ASSEMBLY



RELAY ASSEMBLY