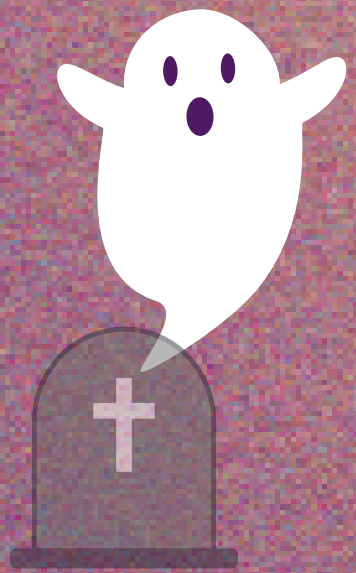




# THE CURSED GRAVE



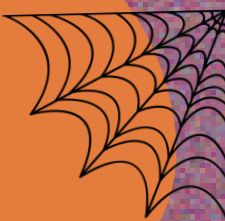
## "HOW TO BUILD IT"

1



GET A BOX AND DRILL SOME HOLES ON ITS SURFACE (10 HOLES)

\*MINIMUM SIZE RECOMMENDED:  
15 X 25 X 10 CM



2

TURN IT AROUND AND GIVE IT THE DECORATION DESIRED...(AS SPOOKY AS POSSIBLE)

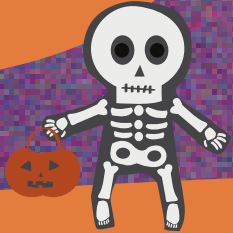


3



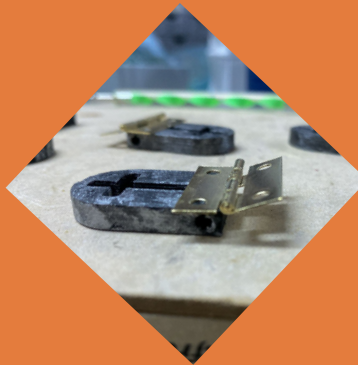
PRINT 7 UNITS OF THE 3D MODEL ATTACHED IN THIS SECTION AND PAINT IT AS YOU LIKE...

\*IT'S A .SLDPRT FILE



4

GLUE THE 7 GRAVES TO THE HINGES AS SHOWN IN THE PICTURE, DISTRIBUTE THEM AROUND THE GRAVEYARD AND SCREW THEM TO THE SURFACE.



5



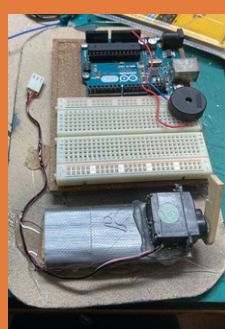
PLACE A PUSHBUTTON THROUGH SEVEN OF HOLES DRILLED ON STEP 1\*. WHEN YOU FOLD THE HINGE, THE GRAVE MUST FALL ON TOP OF THE PUSHBUTTON.

\*THE IMAGE SHOWS THE UNDERNEATH OF THE BOX.



6

ON THE INSIDE OF THE BOX PLACE ALL THE OTHER ELECTRICAL COMPONENTS AND GLUE THE SERVO-MOTOR







7

PLACE AND GLUE THE TWO LEDS THROUGH THE TOP TWO HOLES (STEP 1) OF THE SURFACE WHERE YOU CAN SEE THEM CLEARLY\*...THEY MUST SNEAK OUT ON THE TOP FACE!

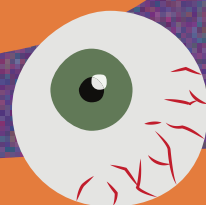
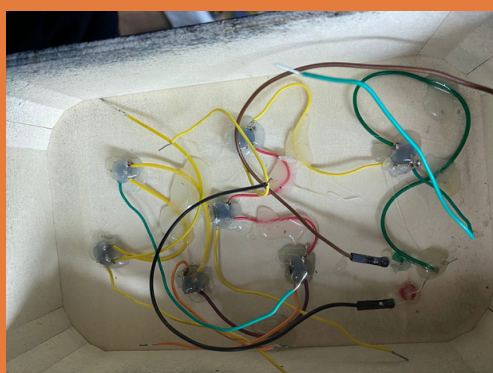


\*THE IMAGE SHOWS THE UNDERNEATH OF THE BOX.

8

CONNECT\* ALL THE COMPONENTS AND BUILD THE ELECTRICAL SCHEME SHOWN IN THE PREVIOUS SECTION (TINKERCAD).

\*USE LARGE CABLES TO FACILITATE THE CONNECTIONS.



GRAB THE FLAG AND GLUE IT TO THE SERVO.MOTOR IN A HORIZONTAL POSITION. IT WILL RISE WHEN YOU WIN!

9



10

PUT THE GRAVEYARD (COVER) ON TOP OF THE BOX CONTAINAIN THE ARDUINO ONE BOARD AND YOU'RE READY TO PLAY!!



TRICK  
OR  
TREAT

# HAPPY HALLOWEEN!

BUILT BY:  
POL DE MORA  
RAFA VIÑAS

## ELISAVA

Escola Universitària de Barcelona  
Disseny i Enginyeria