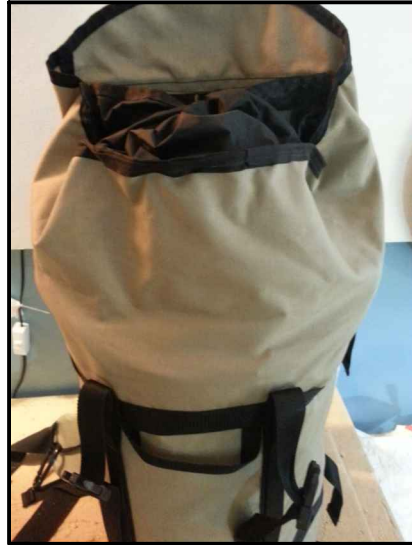


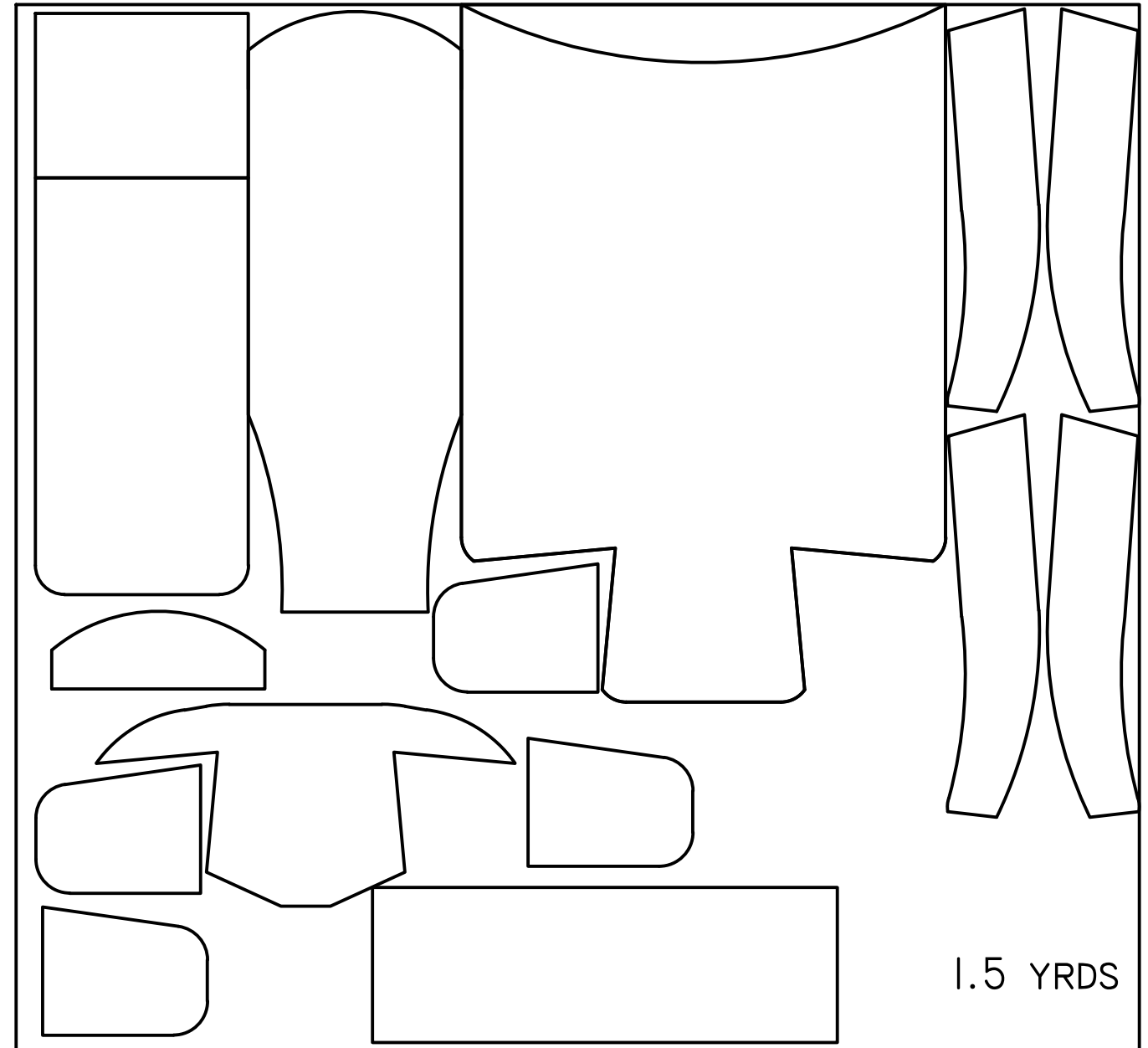
# ADDITIONAL OPTIONS:

THESE ADDITIONAL OPTIONS ALLOW YOU TO ADD MORE WEIGHT AND PACK THE BAG HIGHER.

DRAWSTRING COLLAR:



PADDED SHOULDER STRAPS THAT CAN BE SEWN ON A HOME MACHINE



1 PATTERN LAYOUT WITH OPTIONAL SHOULDER STRPS AND COLLAR.  
USE 840D BALLISTIC, 500D CORDURA OR 420D PACKCLOTH

- CHANGES (FOR MED WEIGHT MACHINES/PACKS) :
- MINUS 1 YRD OF 2" WIDE MED WT WEB (SHOULDER STRPS)
  - PLUS A SHEET OF 7" X 29" X  $\frac{3}{8}$ " FROM QUEST OR 7" X +29" X  $\frac{1}{2}$ " CROSS LINKED POLYETHYLINE
  - PLUS  $\frac{1}{2}$  OF A YARD OF WHATEVER YOUR CHOSEN MATERIAL IS.

- PLUS 1 YRD OF  $\frac{1}{8}$ " DRAWCORD
- PLUS 1 CORD LOCK DOR  $\frac{1}{8}$ " DRAWCORD