

OUTSIDE BACK STEP I: ATTACHING THE LID STRAPS AND CARRY HANDLE



stitch along edge to hold handle in place.

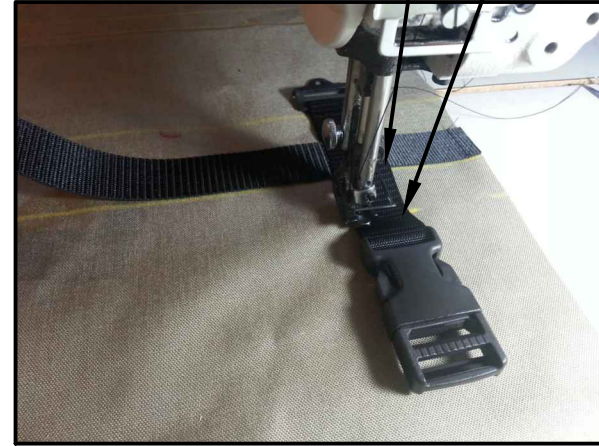
15" peice of 1" med wt webbing



butt cut of webbing against handle

7" peice of 1" lt web

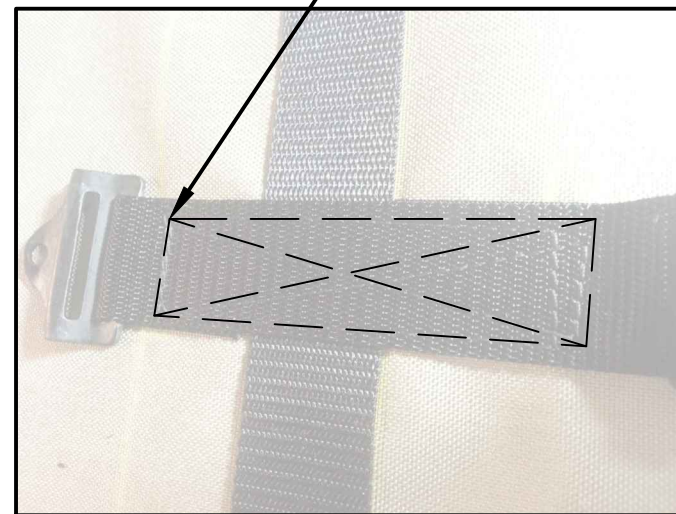
bartack as close as you can to buckle



bar tack

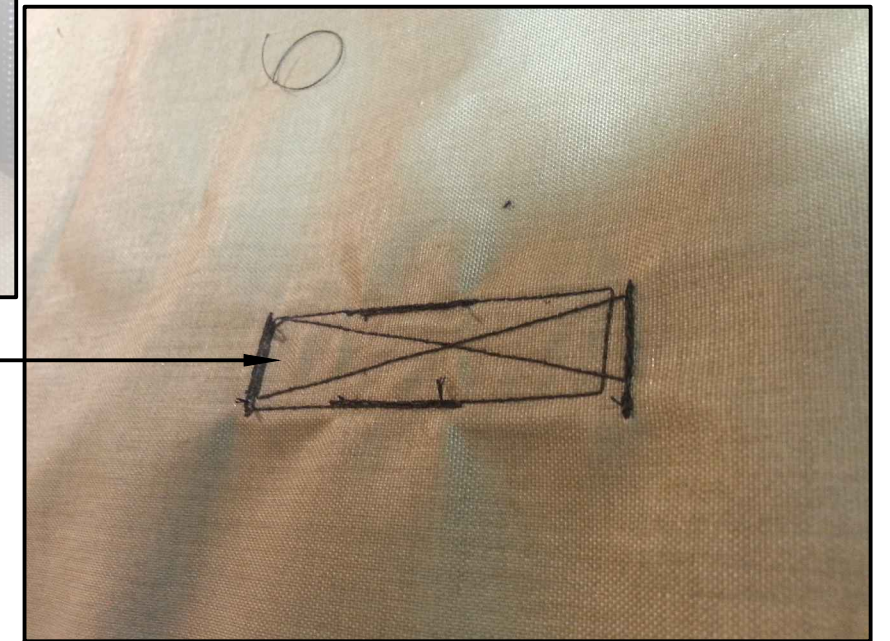
Bar tack

complete the stitch by returning the initial bartack by the ladder loc and going over it, then stitch an x pattern between the opposing corners.



detail of stitching on inside of cloth

bartack over handle webbing



PRODUCED BY AN AUTODESK EDUCATIONAL PRODUCT

PRODUCED BY AN AUTODESK EDUCATIONAL PRODUCT