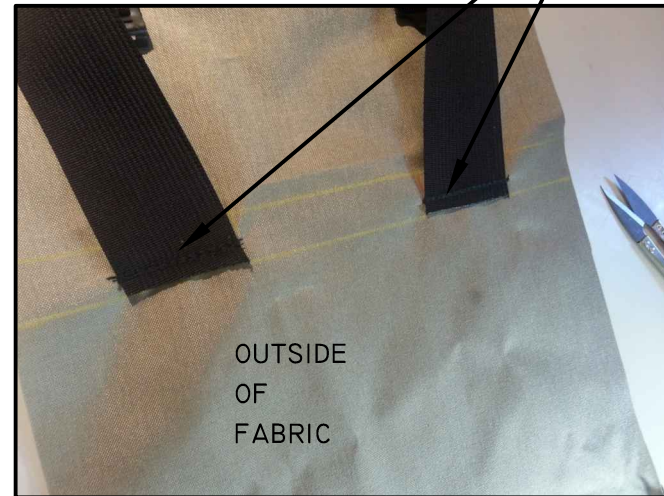


OUTSIDE BACK STEP 1 CTD:  
LID SHOULD LOOK LIKE THIS  
WHEN DONE.



OUTSIDE BACK STEP 2: ATTACHING THE SHOULDER STRAPS (BE CAREFUL NOT TO  
SEW OVER 1" WEBBING)



place shoulder strap ends on line and bar tack  
 $\frac{1}{2}$ " from the edge of webbing



stitch the webbing down  
on both edges  
bartacking over both  
shoulder straps here  
and here.



inside of fabric  
showing stitching  
pattern.

OUTSIDE BACK STEP 3: ATTACHING THE INSIDE BACK TO THE OUTSIDE BACK

Match up the center marks, line up all the edges and pin togeather

