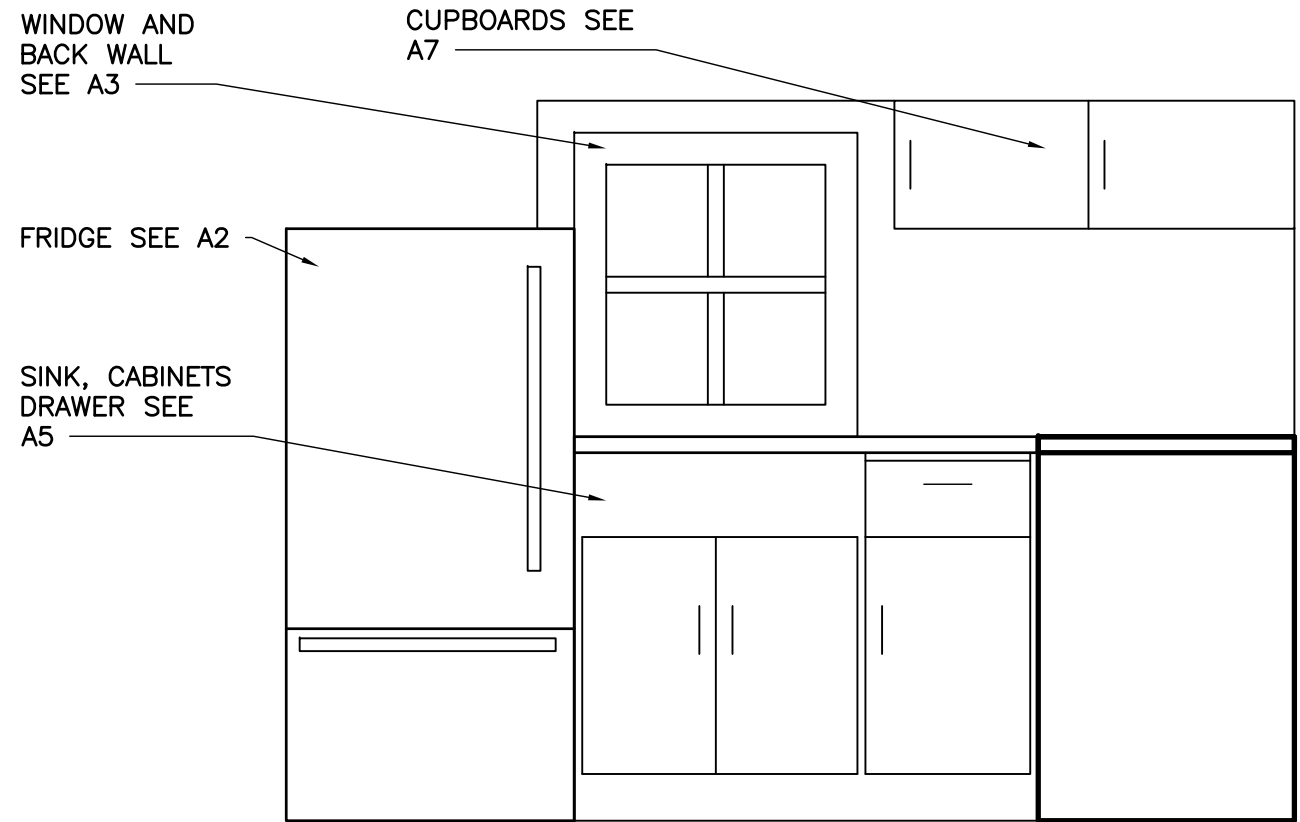
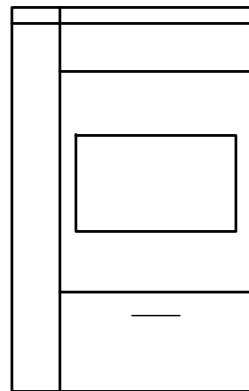


1 OVERALL PLAN
A1 SCALE= 1" = 1'-0"

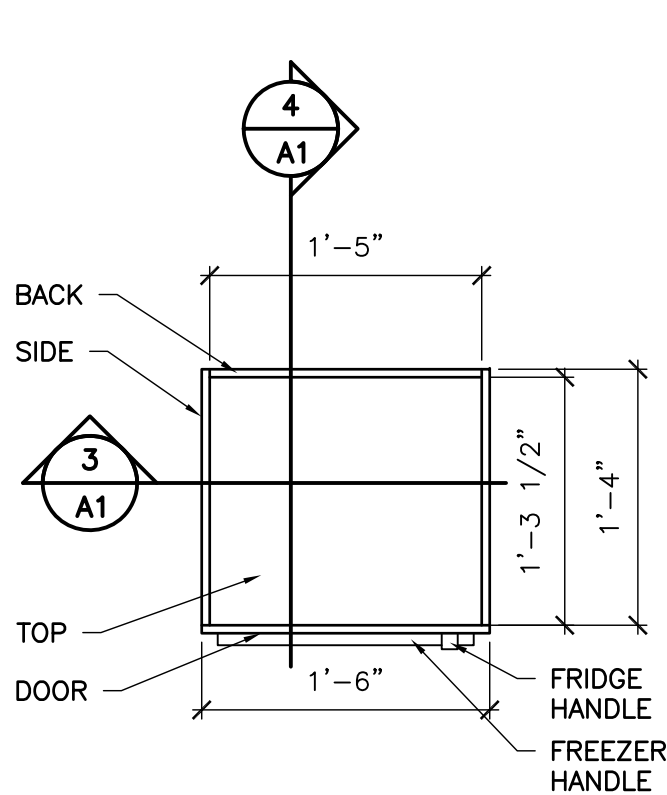


2 MAIN ELEVATION
A1 SCALE= 1" = 1'-0"

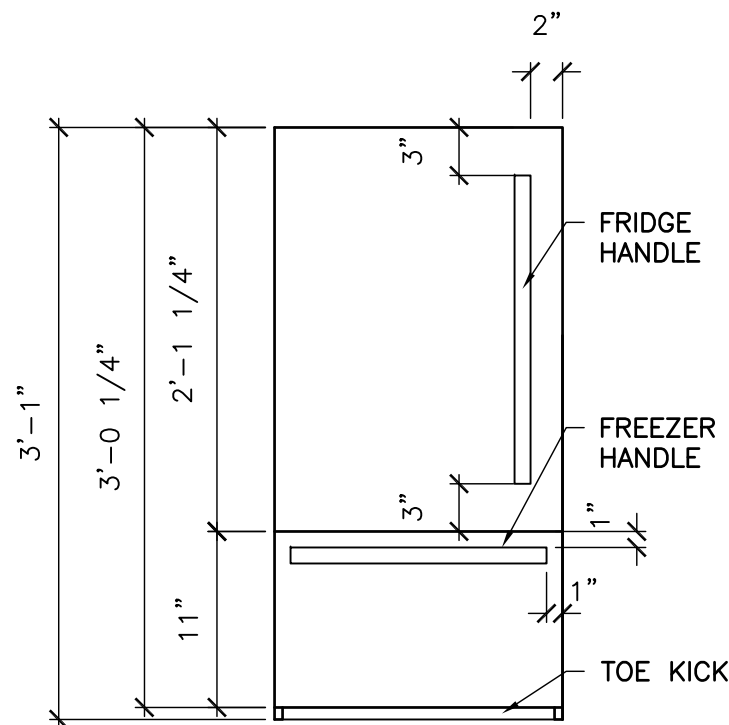


3 STOVE ELEVATION
A1 SCALE= 1" = 1'-0"

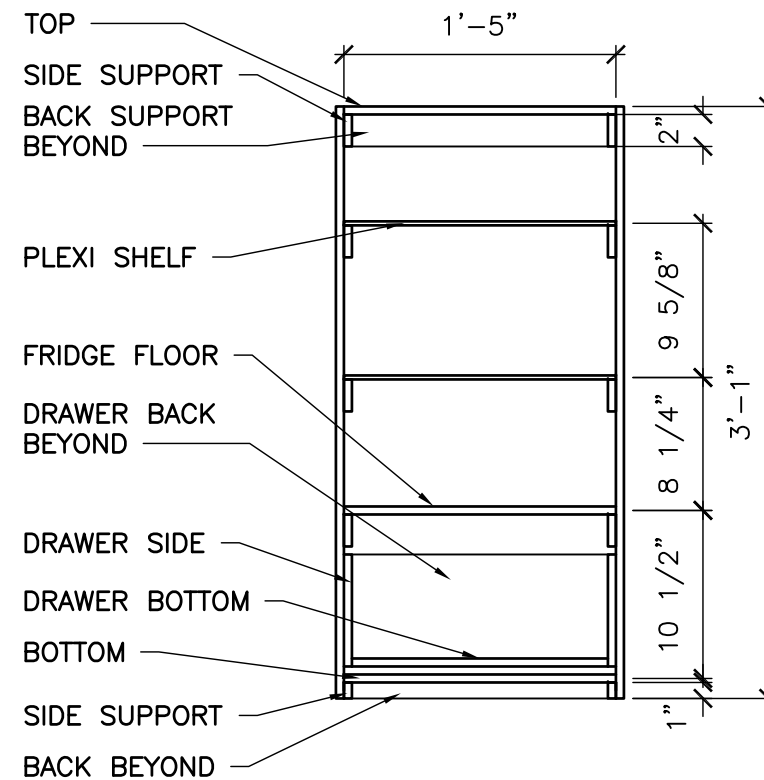
project title	MINI KITCHEN	designed by: KD	class: --	notes:	cad file
	sheet title	OVERALL DRAWINGS	drawn by: TheOnlyKD		instructor: --
			date: DEC. 25, 2015		scale: 1" = 1'-0"
		course: ARC-201	sheet: 1 of 7		



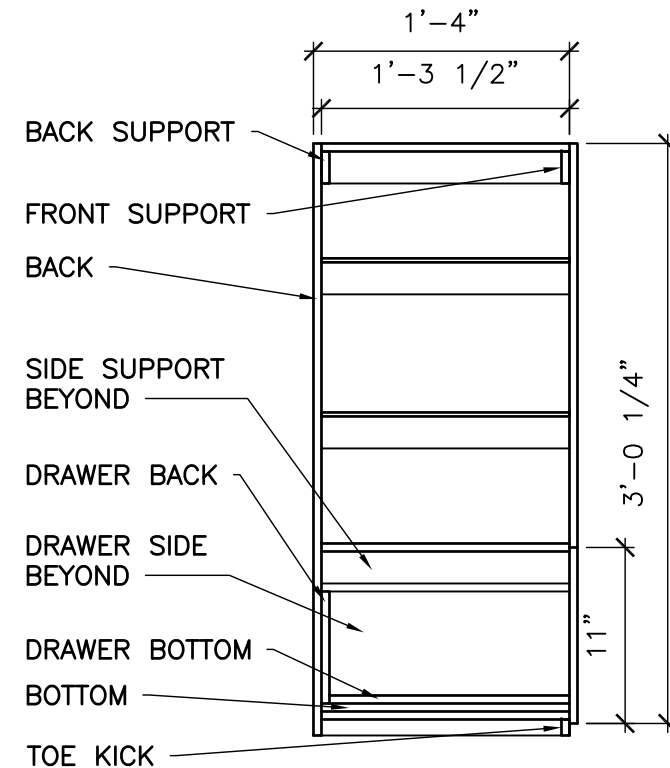
1 FRIDGE PLAN
A2 SCALE= 1" = 1'-0"



2 FRIDGE ELEVATION
A2 SCALE= 1" = 1'-0"



3 FRIDGE SECTION
A2 SCALE= 1" = 1'-0"

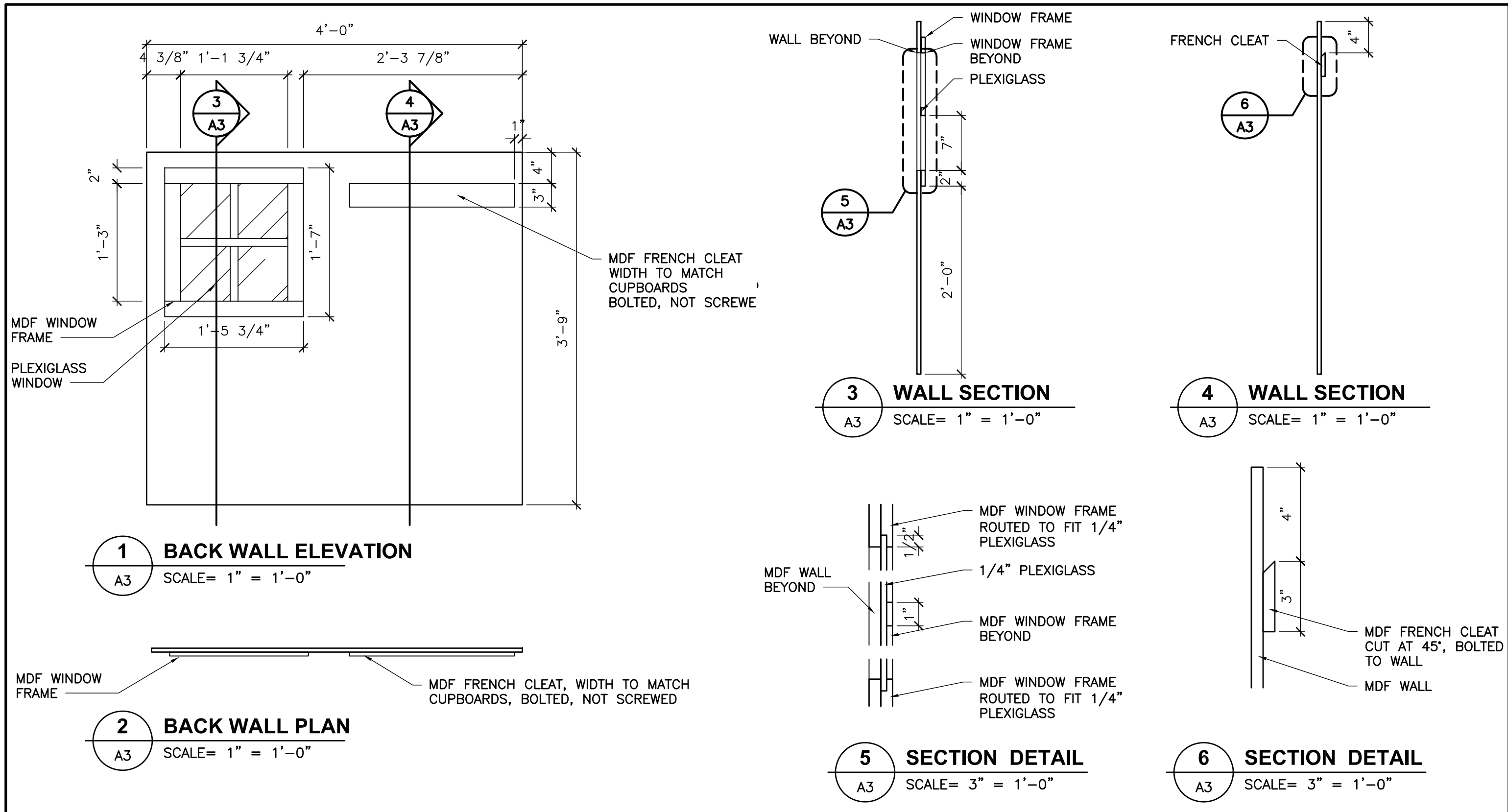


4 FRIDGE SECTION
A2 SCALE= 1" = 1'-0"

PRODUCED BY AN AUTODESK EDUCATIONAL PRODUCT

PRODUCED BY AN AUTODESK EDUCATIONAL PRODUCT

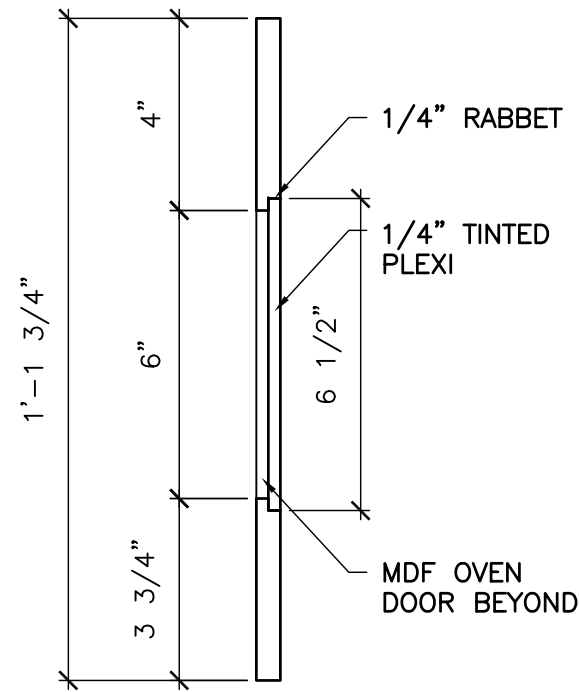
project title	MINI KITCHEN	designed by:	KD	class:	--	notes:	cad file
	sheet title	FRIDGE DETAILS	drawn by:	TheOnlyKD	instructor:		--
		date:	DEC. 25, 2015	scale:	1" = 1'-0"		A2
		course:	ARC-201	sheet:	2 of 7		



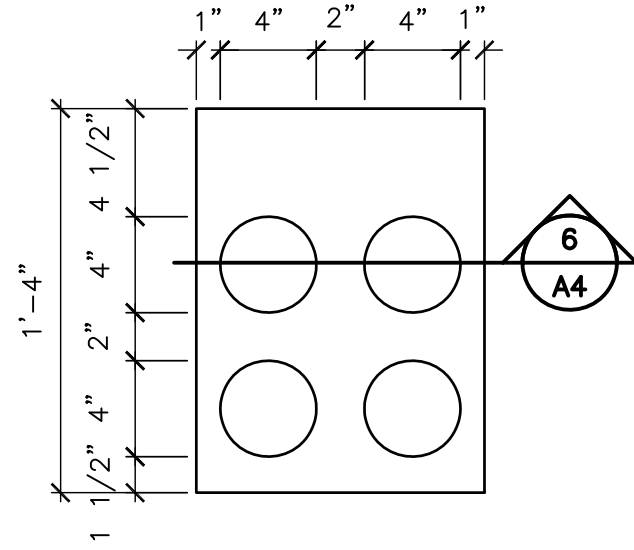
PRODUCED BY AN AUTODESK EDUCATIONAL PRODUCT

PRODUCED BY AN AUTODESK EDUCATIONAL PRODUCT

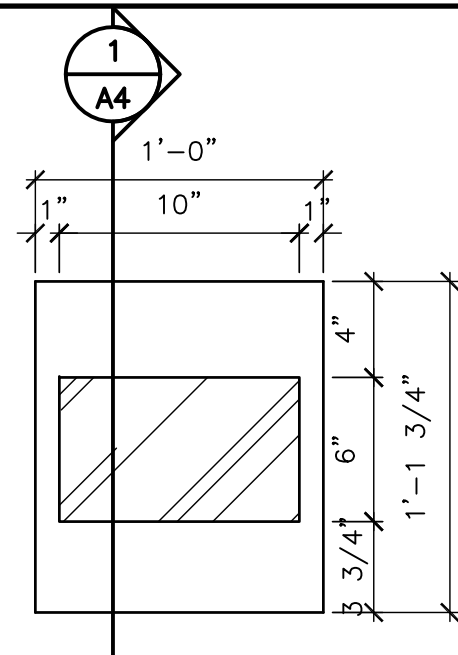
project title MINI KITCHEN	designed by: KD	class: --	notes:	cad file
	drawn by: TheOnlyKD	instructor: --		drawing no.
sheet title BACK WALL	date: DEC. 25, 2015	scale: AS NOTED		drawing no. A3
	course: ARC-201	sheet: 3 of 7		



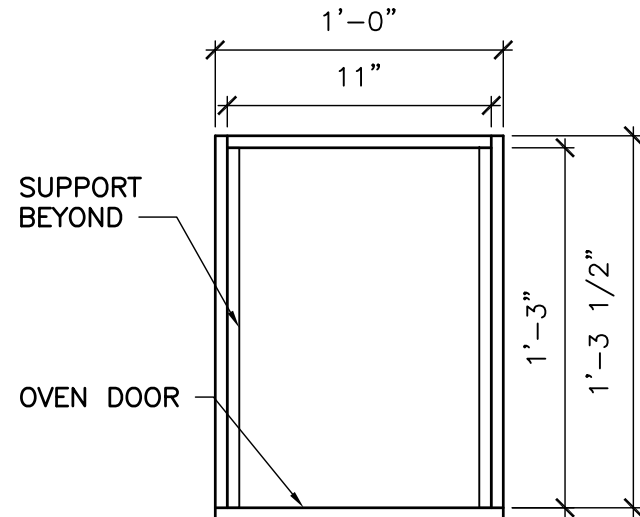
1 OVEN DOOR SECTION
A4 SCALE= 3" = 1'-0"



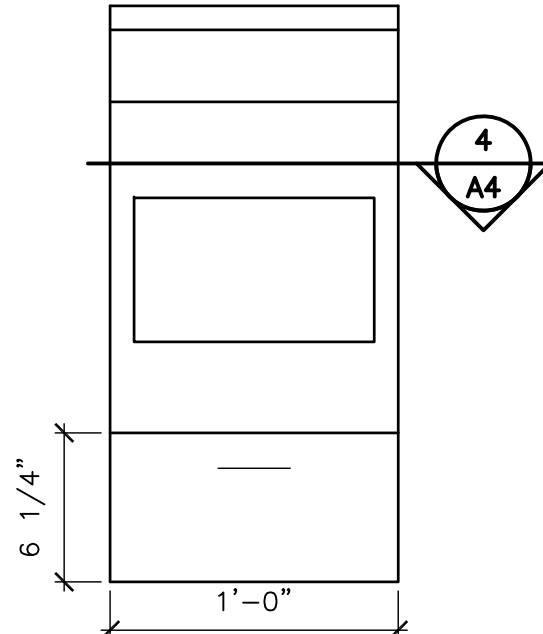
2 STOVE PLAN
A4 SCALE= 1 1/2" = 1'-0"



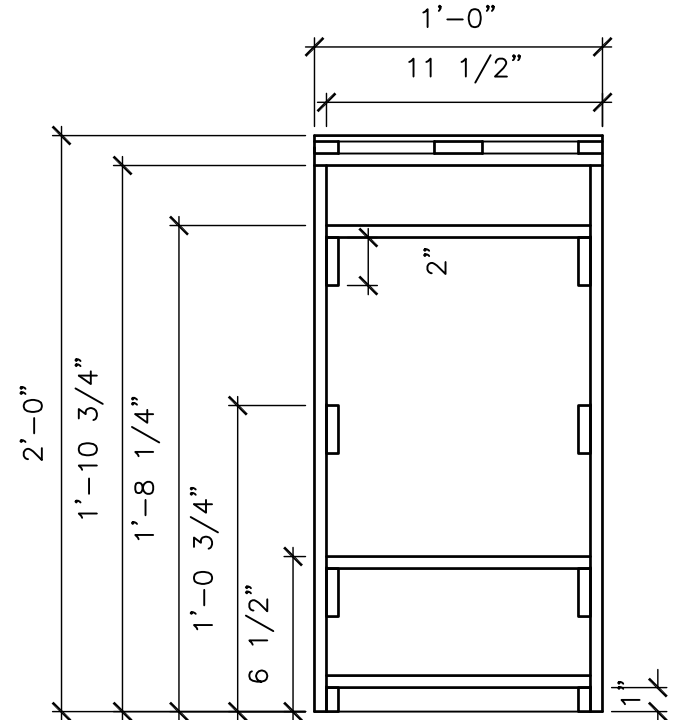
3 OVEN DOOR ELEVATION
A4 SCALE= 1 1/2" = 1'-0"



4 PLAN DETAIL
A4 SCALE= 1 1/2" = 1'-0"



5 STOVE ELEVATION
A4 SCALE= 1 1/2" = 1'-0"

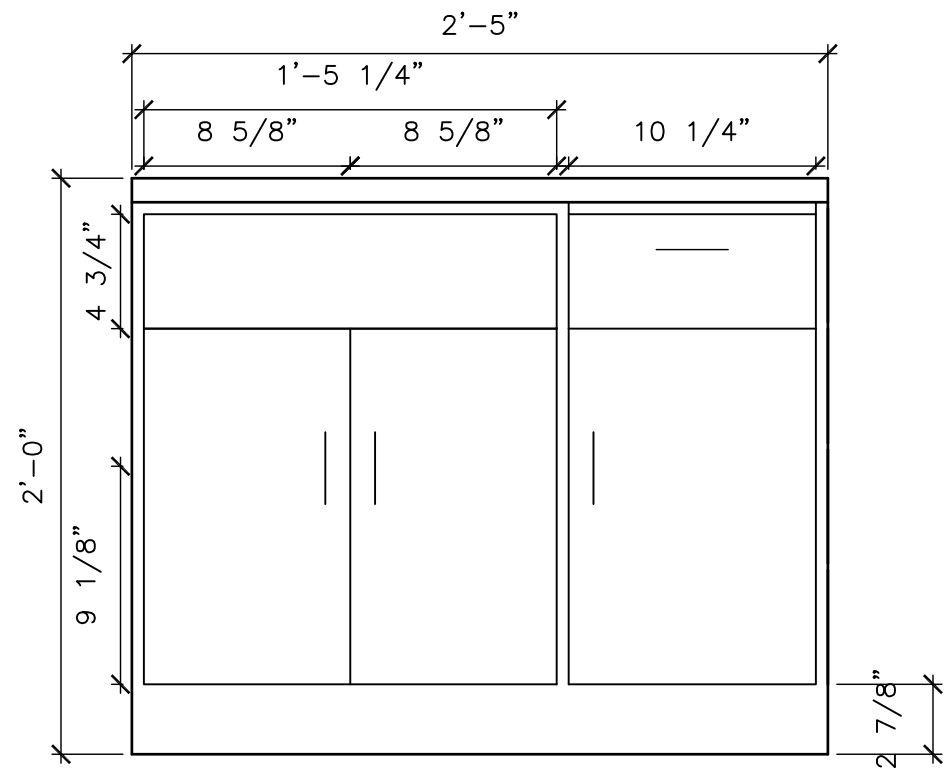


6 OVEN SECTION
A4 SCALE= 1 1/2" = 1'-0"

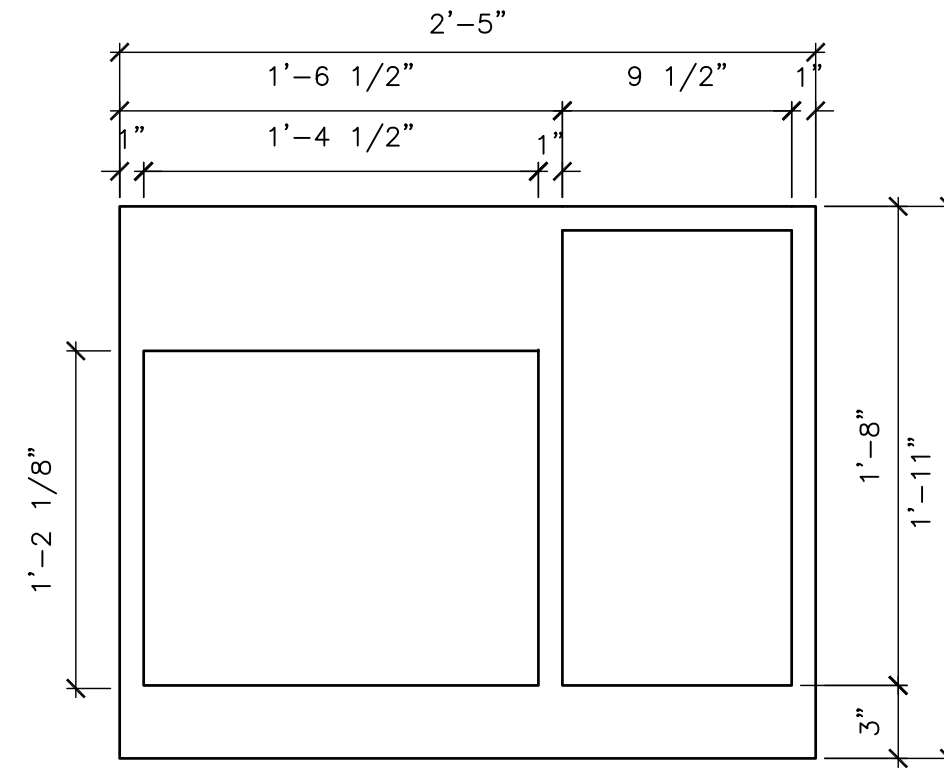
project title	MINI KITCHEN	designed by:	KD	class:	--	notes:	cad file
	sheet title	STOVE DETAILS	drawn by:	TheOnlyKD	instructor:		--
			date:	DEC. 25, 2015	scale:	AS NOTED	A4
		course:	ARC-201	sheet:	4 of 7		

PRODUCED BY AN AUTODESK EDUCATIONAL PRODUCT

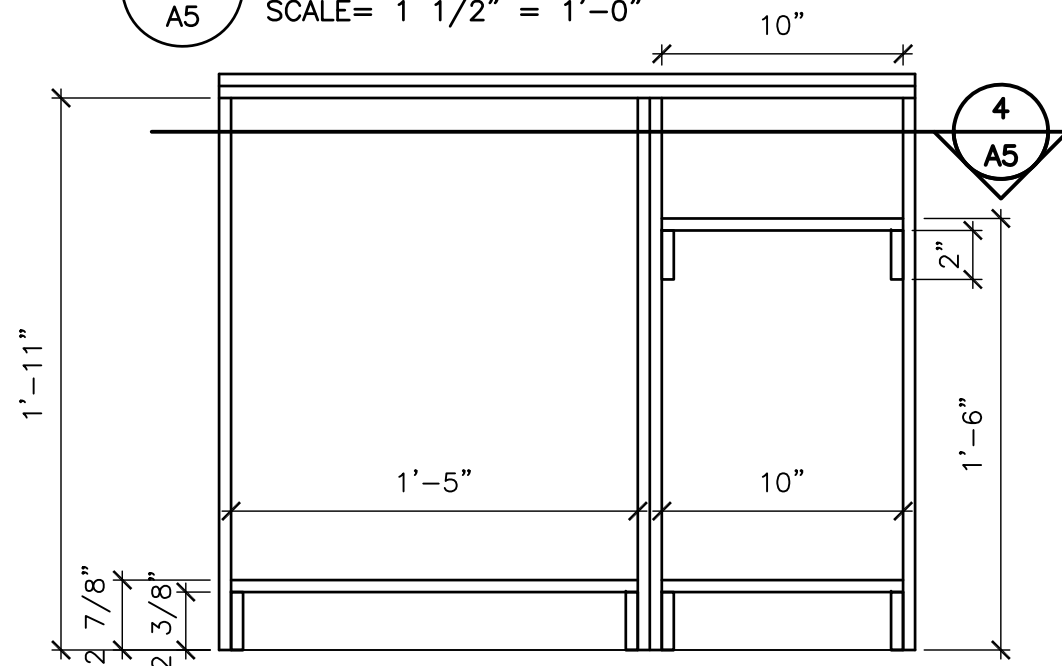
PRODUCED BY AN AUTODESK EDUCATIONAL PRODUCT



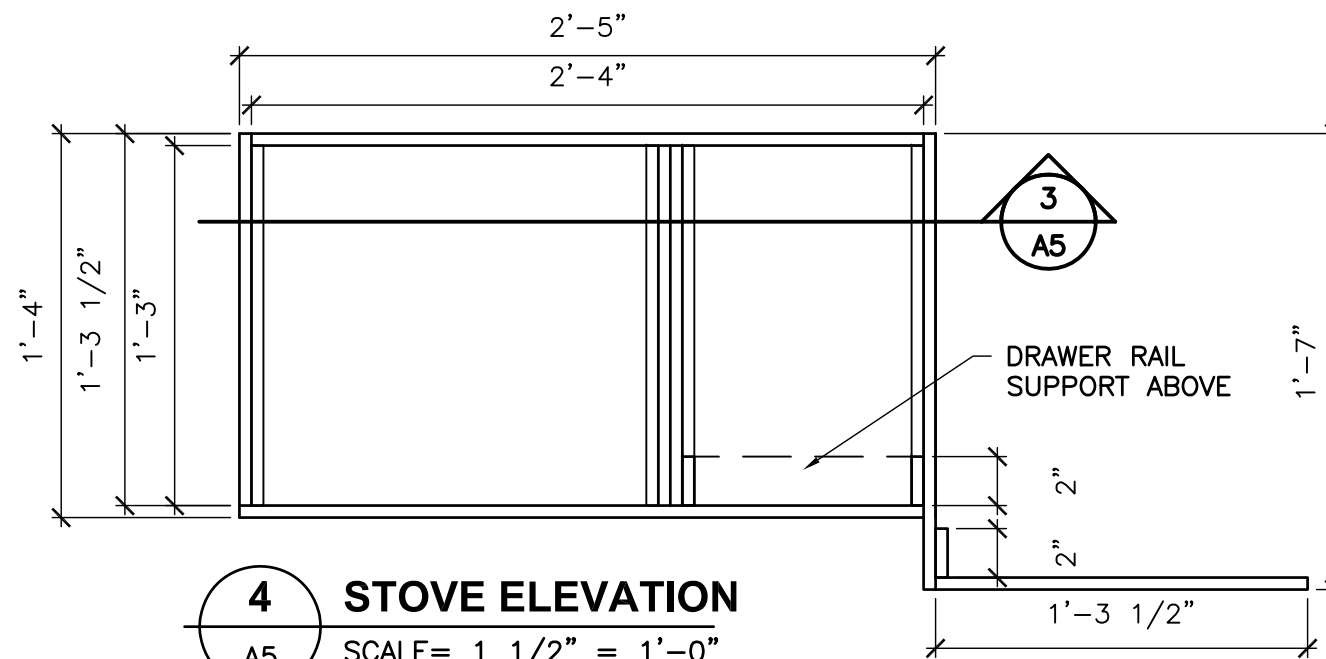
1 STOVE ELEVATION
A5 SCALE= 1 1/2" = 1'-0"



2 STOVE ELEVATION
A5 SCALE= 1 1/2" = 1'-0"

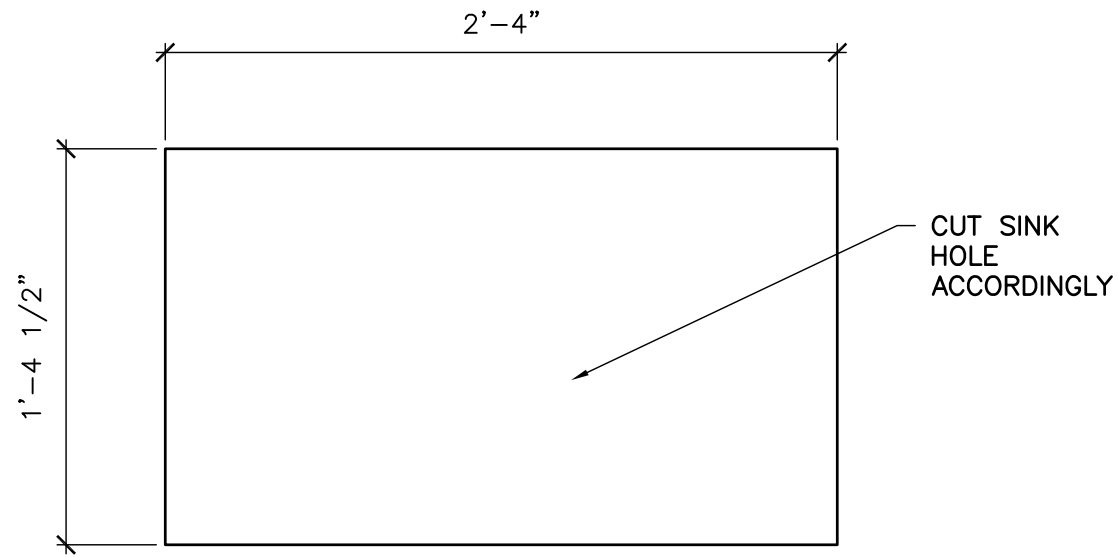


3 STOVE ELEVATION
A5 SCALE= 1 1/2" = 1'-0"

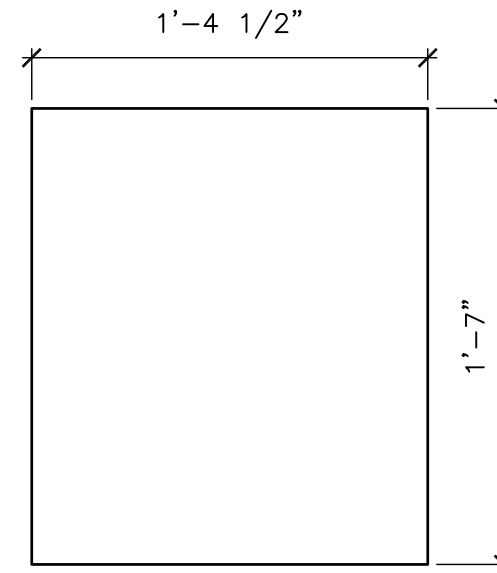


4 STOVE ELEVATION
A5 SCALE= 1 1/2" = 1'-0"

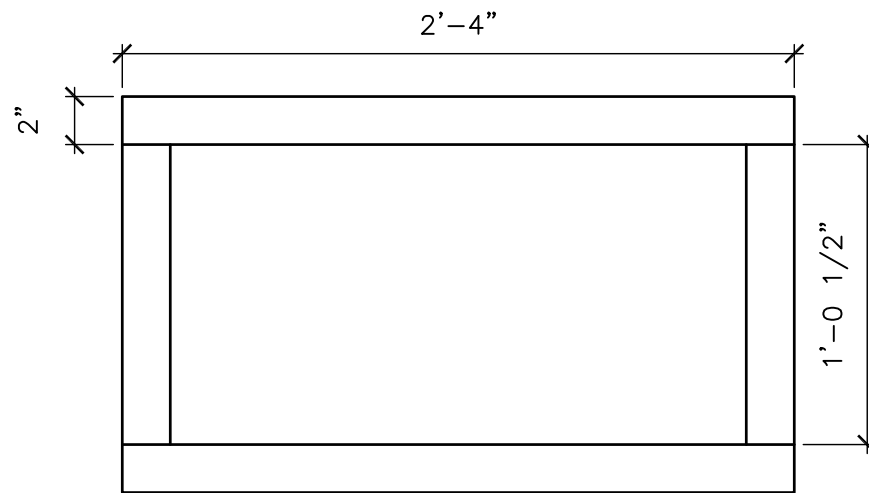
project title MINI KITCHEN	designed by: KD	class: --	notes:	cad file
	drawn by: TheOnlyKD	instructor: --		drawing no.
sheet title CUPBOARDS	date: DEC. 25, 2015	scale: 1 1/2" = 1'-0"		A5
	course: ARC-201	sheet: 5 of 7		



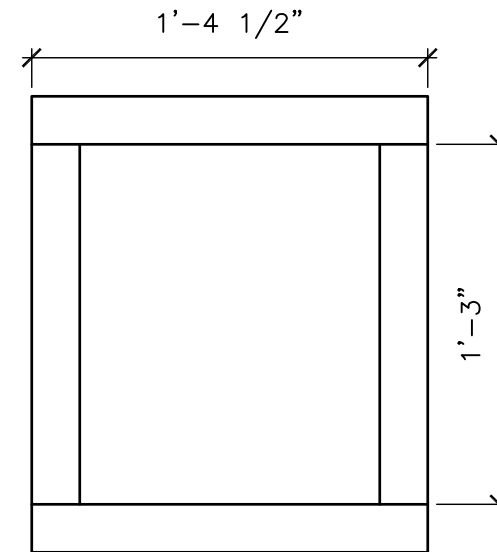
1 SINK COUNTER
A6 SCALE= 1 1/2" = 1'-0"



2 STOVE COUNTER
A6 SCALE= 1 1/2" = 1'-0"

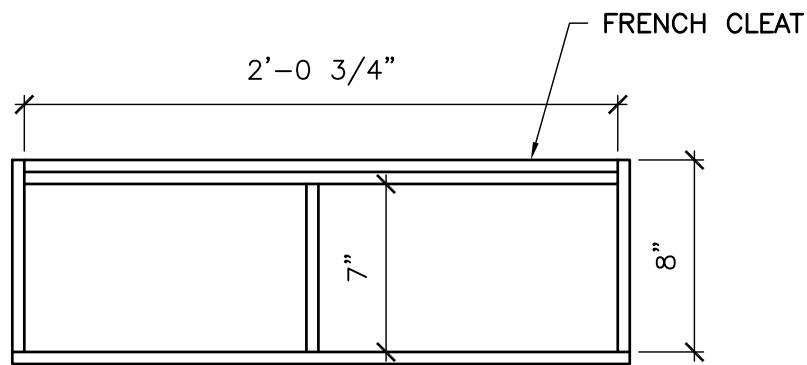


3 UNDER SINK SUPPORT
A6 SCALE= 1 1/2" = 1'-0"

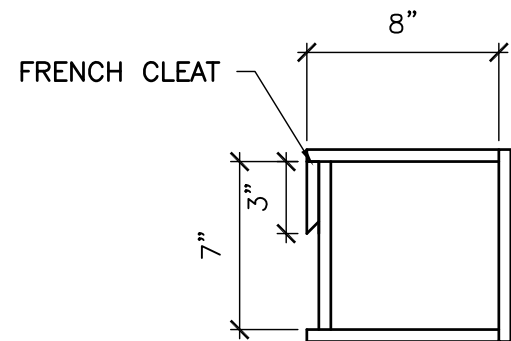


4 UNDER STOVE SUPPORT
A6 SCALE= 1 1/2" = 1'-0"

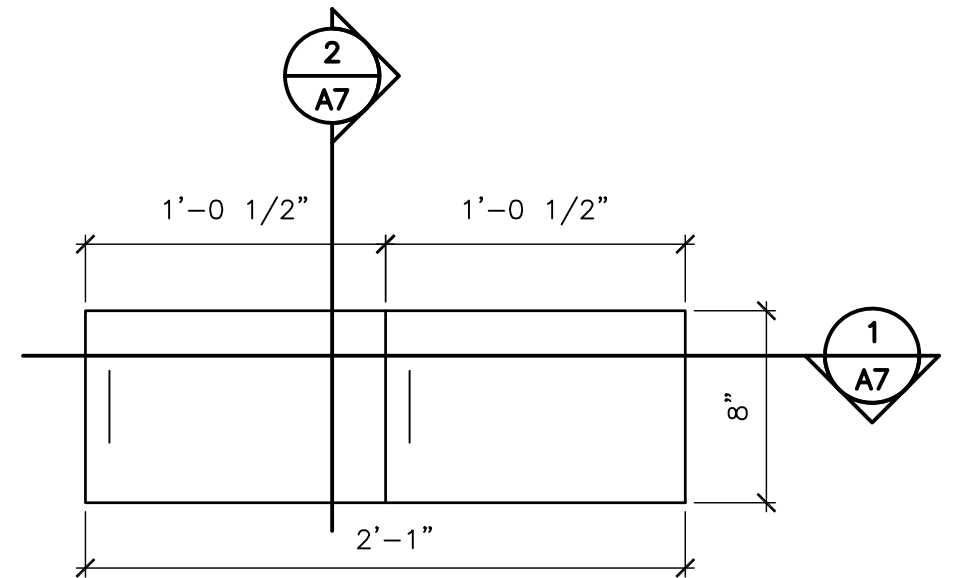
	project title	designed by: KD	class: --	notes:	cad file
	MINI KITCHEN	drawn by: TheOnlyKD	instructor: --		drawing no.
sheet title	date: DEC. 25, 2015	scale: 1 1/2" = 1'-0"	6 of 7		A6
FRIDGE DETAILS	course: ARC-201				



1 CUPBOARD PLAN
 SCALE= 1 1/2" = 1'-0"
 A7



2 CUPBOARD SECTION
 SCALE= 1 1/2" = 1'-0"
 A7



3 CUPBOARD ELEVATION
 SCALE= 1 1/2" = 1'-0"
 A7

	project title	designed by: KD	class: --	notes:	cad file
	MINI KITCHEN	drawn by: TheOnlyKD	instructor: --		drawing no.
sheet title	date: DEC. 25, 2015	scale: 1 1/2" = 1'-0"	sheet: 7 of 7		A7
FRIDGE DETAILS	course: ARC-201				

Project Summary

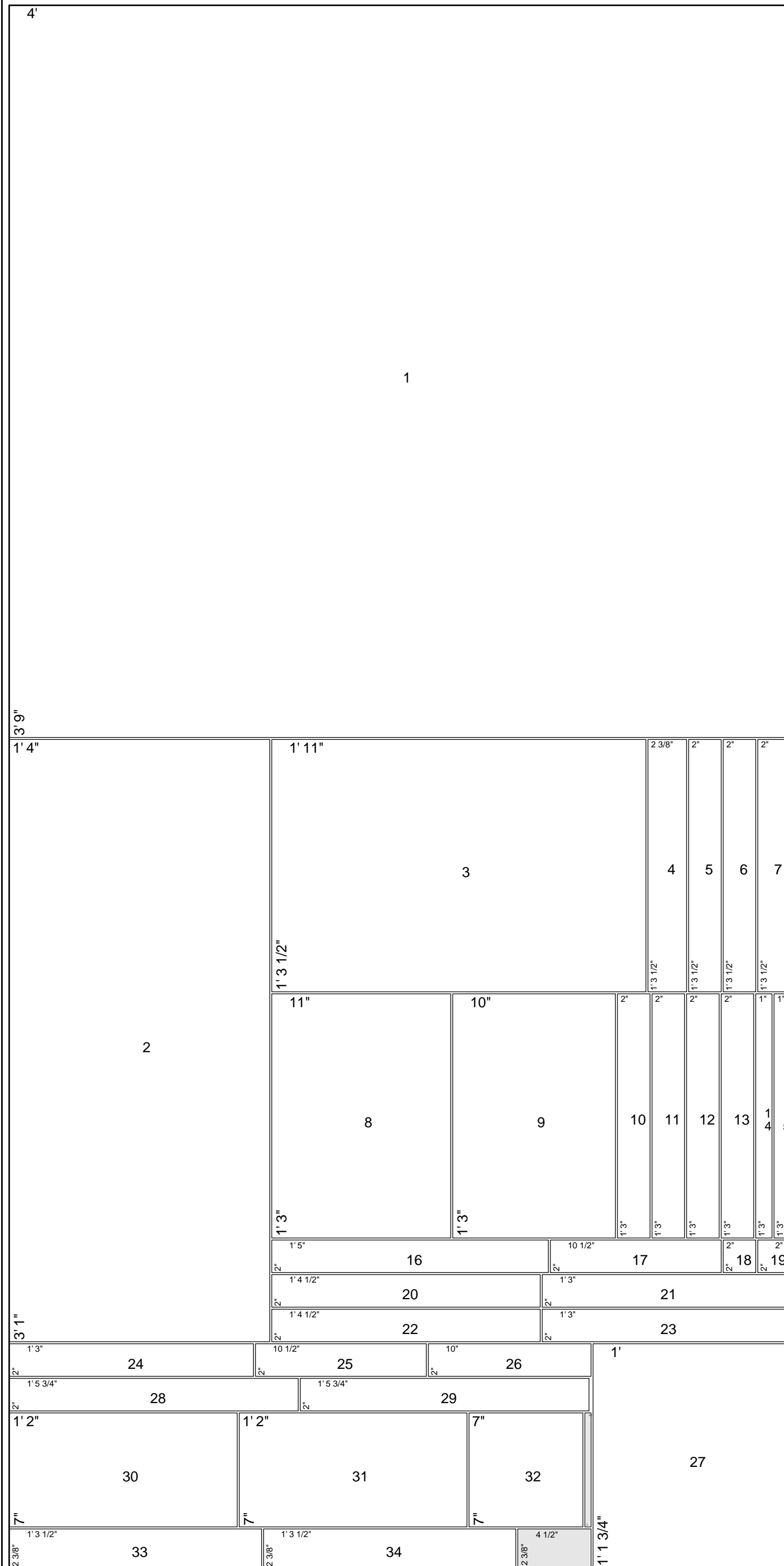
Number of cutting layouts: 4
Panels utilization rate: 84.24%
Number of used panels: 4
Total panels area: 128 ft² 0 inch²
Number of cut parts from all panels: 96
Number of parts have not been cut: 0
Number of produced waste parts (cut-offs): 25
Saw Kerf: 1/8"

List of used panels

#	Panel ID	Panel Length	Panel Width	Count
1	Panel_1	8'	4'	4

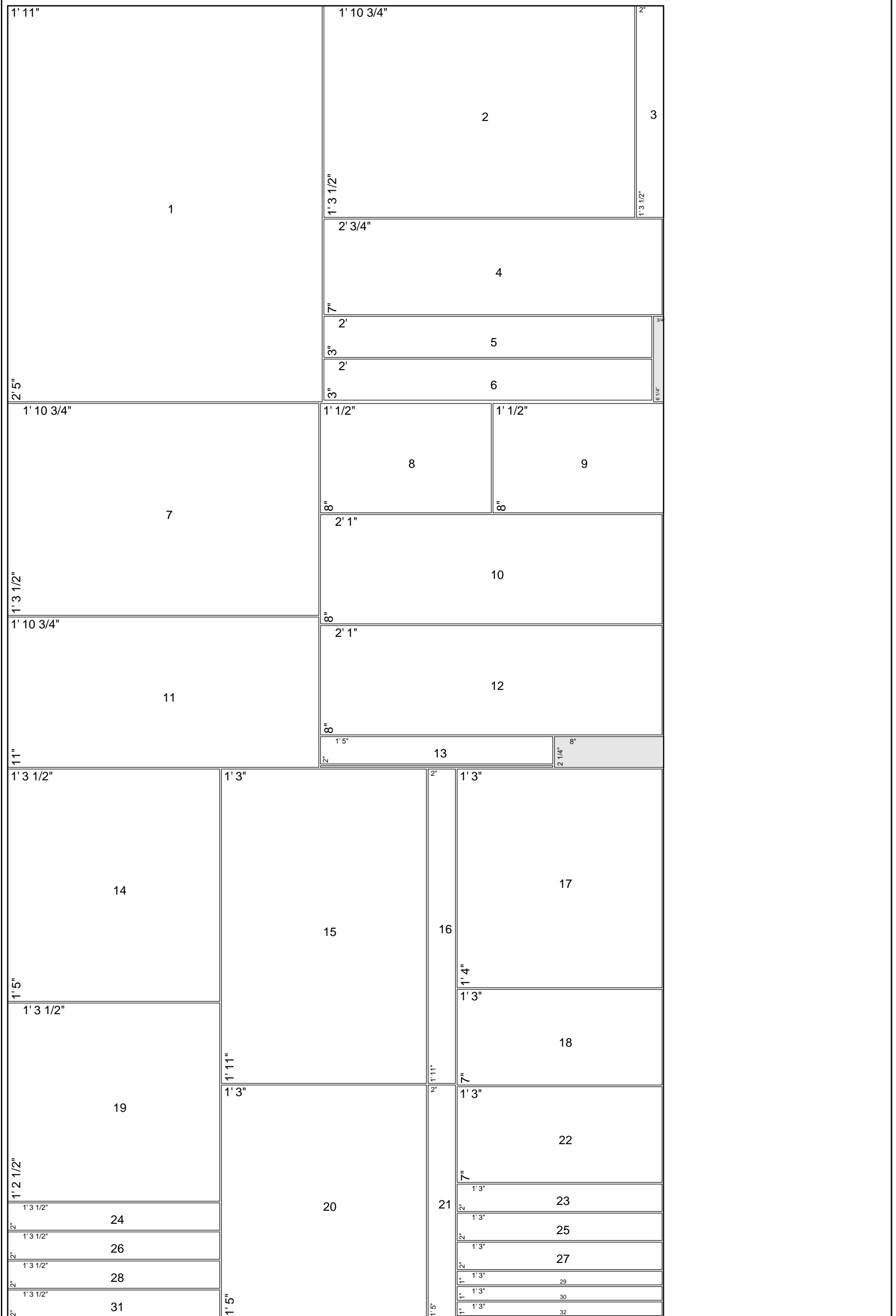
List of used parts

#	Part ID	Part Length	Part Width	Count
1	muntin horiz	1' 1 3/4"	1"	1
2	muntin vert	1' 3"	1"	1
3	Sm Stove Suppor	1' 3"	1"	2
4	thinsidesupport	1' 3"	1"	2
5	toe kick	1' 5"	1"	1
6	Drawer Support	2"	2"	2
7	Drawerslidesupp	10"	2"	1
8	UNDER SINK 2	10 1/2"	2"	2
9	stove supports	1' 3"	2"	6
10	UNDER STOVE 2	1' 3"	2"	2
11	window frame ve	1' 3"	2"	2
12	side supports	1' 3 1/2"	2"	8
13	UNDER STOVE	1' 4 1/2"	2"	2
14	FrontbackSuppor	1' 5"	2"	4
15	window frame ho	1' 5 3/4"	2"	2
16	CupboardStoveSu	1' 11"	2"	1
17	UNDER SINK	2' 4"	2"	2
18	Cupboard suppor	1' 3 1/2"	2 3/8"	4
19	FRENCH CLEATS	2'	3"	2
20	Cupboard Drawer	10 1/4"	4 3/4"	1
21	Faux Drawer	1' 5 1/4"	4 3/4"	1
22	CUPBOARD DIVIDE	7"	7"	1
23	FREEZE DRAWSIDE	1' 2"	7"	2
24	drawer side fre	1' 3"	7"	2
25	drawer back fre	1' 4"	7"	1
26	FREEZE DRAWBCK	1' 4 1/2"	7"	1
27	CUPBOARD BACK	2' 3/4"	7"	1
28	CUPBOARD SIDES	8"	8"	2
29	CUPBOARD DOORS	1' 1/2"	8"	2
30	CUPBOARD TB	2' 1"	8"	2
31	Cupboard Doors	1' 2 7/8"	8 5/8"	2
32	CupboardBottomR	1' 3"	10"	1
33	Cupboard Door R	1' 2 7/8"	10 1/4"	1
34	stove back	1' 10 3/4"	11"	1
35	oven drawer doo	6 1/4"	1'	1
36	oven door	1' 1 3/4"	1'	1
37	FREEZE DRAWBOTT	1' 3 1/2"	1' 2 1/2"	1
38	Stove insides	11"	1' 3"	3
39	topbottomfloor	1' 5"	1' 3 1/2"	3
40	Stove Sides	1' 10 3/4"	1' 3 1/2"	2
41	beside stove	1' 11"	1' 3 1/2"	1
42	Cupboard L side	1' 11"	1' 3 1/2"	1
43	stove top	1'	1' 4"	2
44	drawer bottom f	1' 3"	1' 4"	1
45	fridge sides	3' 1"	1' 4"	2
46	Stove counter	1' 7"	1' 4 1/2"	1
47	Sink Top	2' 4"	1' 4 1/2"	1
48	CupboardBottomL	1' 3"	1' 5"	1
49	fridge back	3' 1"	1' 5"	1
50	fridge door	3' 1"	1' 6"	1
51	Cupboard R Side	1' 11"	1' 7"	1
52	Cupboard inside	1' 3"	1' 11"	2
53	Cupboards front	1' 11"	2' 5"	1
54	back wall	4'	3' 9"	1



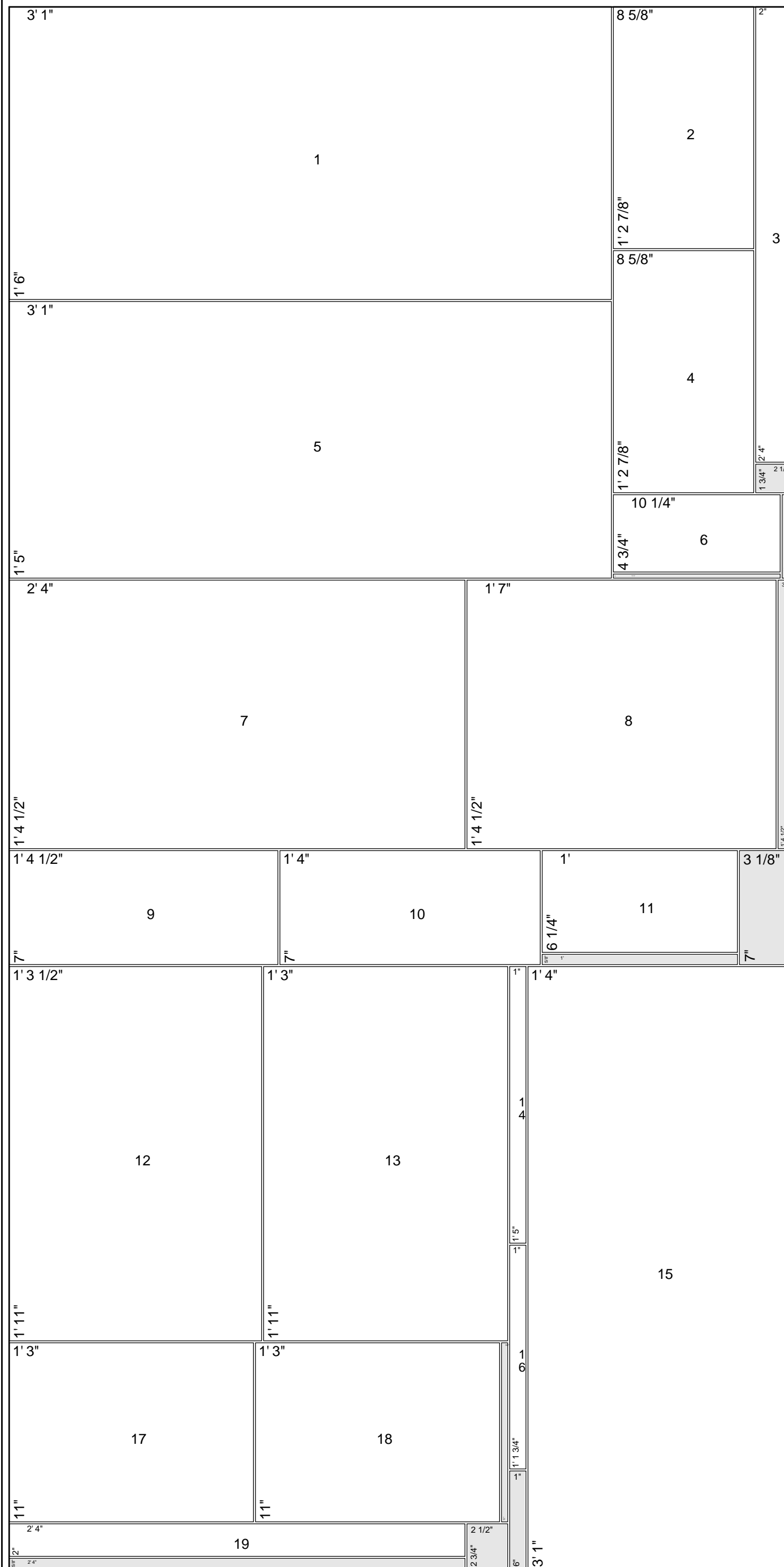
Layout: 1. Parts with indices

1 of Panel_1	Length	Width	Count	Utilization
	8'	4'	1	99.70%



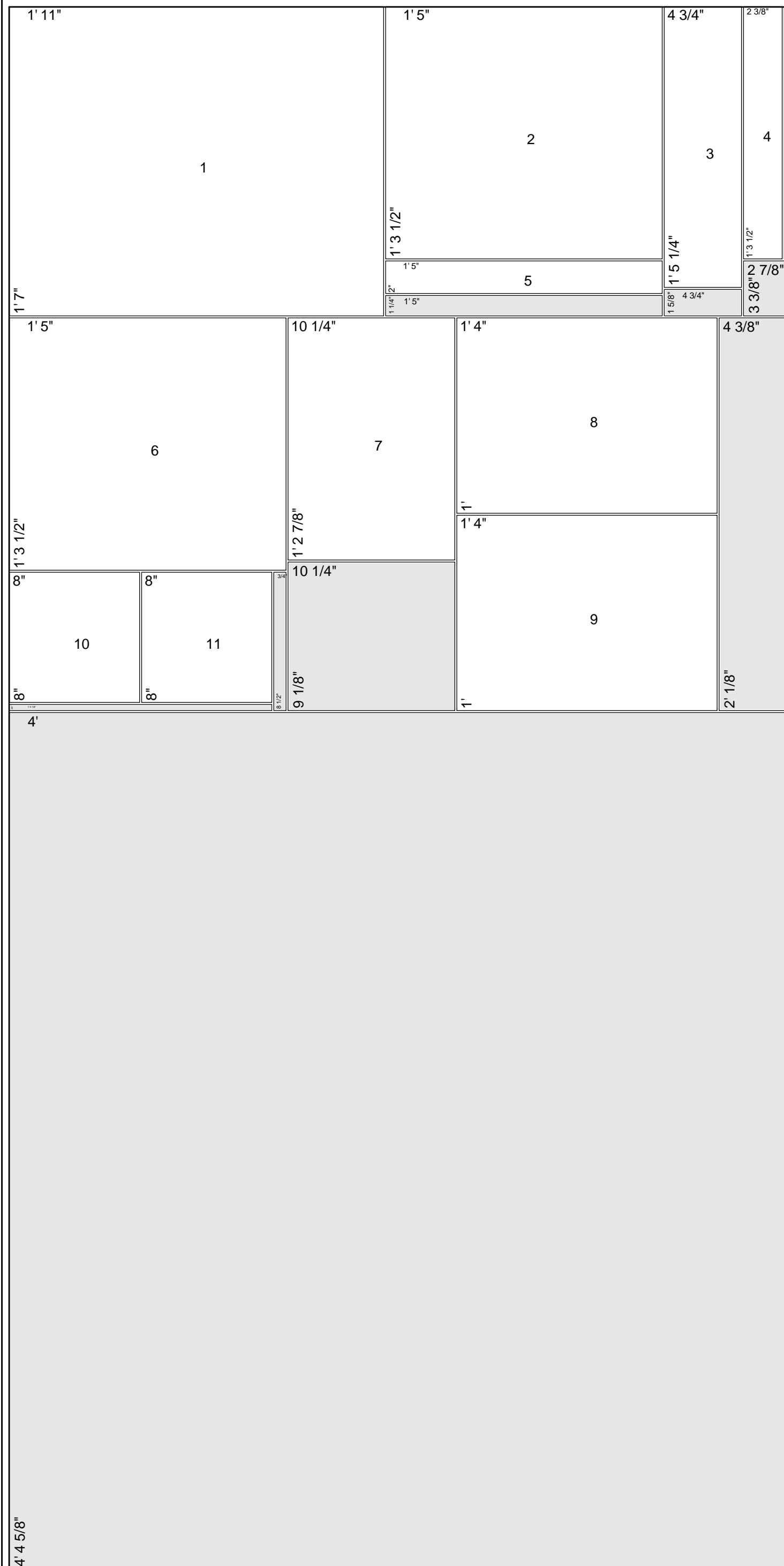
Layout: 2. Parts with indices

1 of Panel_1	Length	Width	Count	Utilization
	8'	4'	1	99.46%



Layout: 3. Parts with indices

1 of Panel_1	Length	Width	Count	Utilization
	8'	4'	1	98.15%



Layout: 4. Parts with indices

1 of Panel_1	Length	Width	Count	Utilization
	8'	4'	1	39.63%