

# Cardstock pieces for the TOS Klingon Communicator

Detailed instructions can be found at [www.instructables.com](http://www.instructables.com)

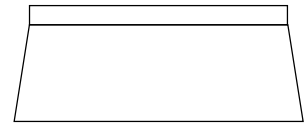
Or check out [www.KAG.org](http://www.KAG.org)

Score **all** folds lines before cutting.

When practical, overshoot your score lines.

Dry fit pieces before gluing.

Use a metal ruler when scoring and cutting straight lines. Use the ruler to cover/protect your work. That way slips of the knife go away from your work. Use a fresh blade in your hobby knife. If you don't remember the last time you changed it, you're probably overdue. More accident happened because of a dull knife than from a sharp one.



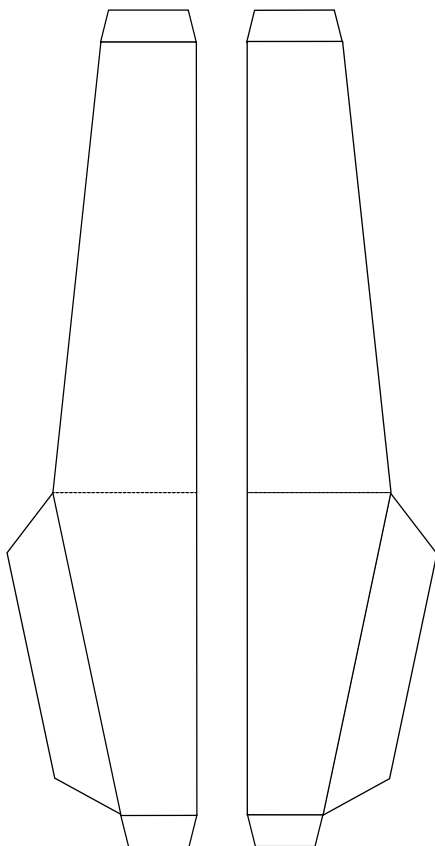
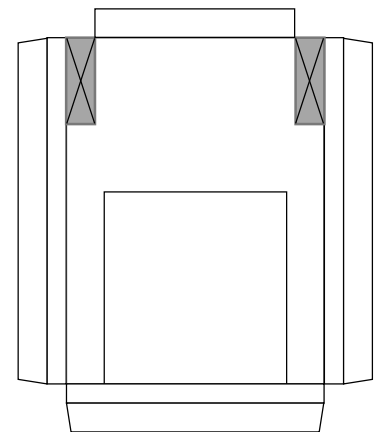
Control Plate  
Template



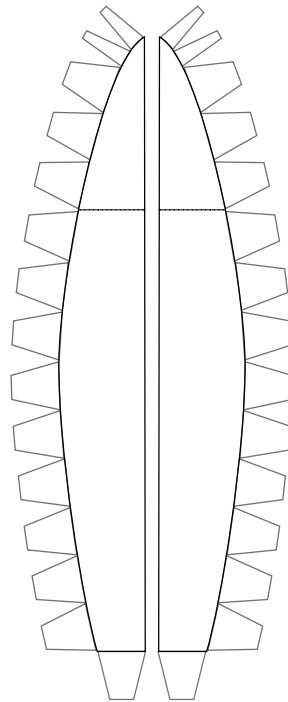
Control Knobs



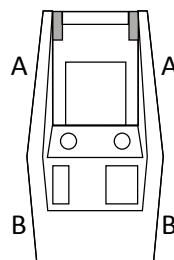
Recessed  
Panel



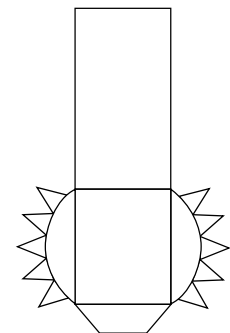
Comm Shell  
Side Tabs



Lid Sides



C



Frequency  
Modulator

