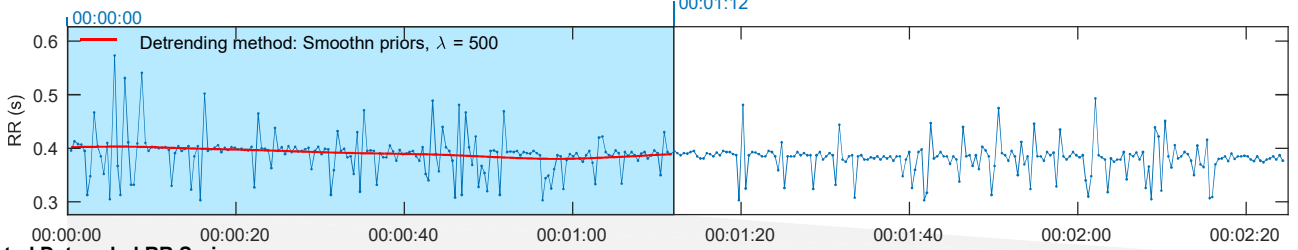


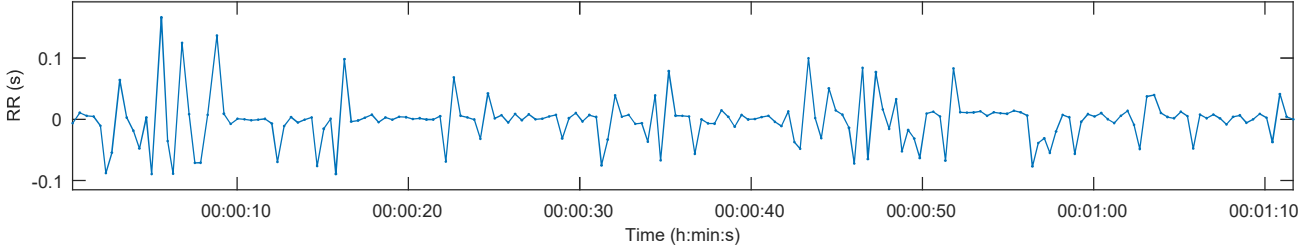
HRV Analysis Results

RR Time Series

Results for a single sample



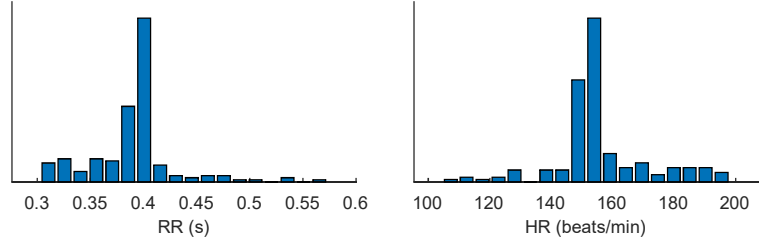
Selected Detrended RR Series



Time-Domain Results

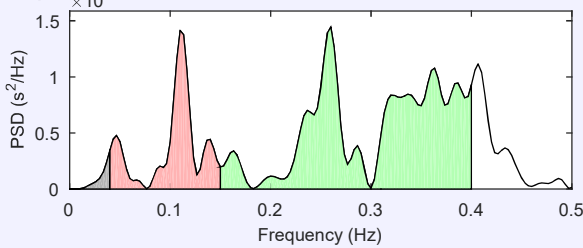
Variable	Units	Value
Mean RR*	(ms)	389.4
STD RR (SDNN)	(ms)	38.1
Mean HR*	(beats/min)	154.08
Min/Max HR	(beats/min)	136.67/178.36
RMSSD	(ms)	59.4
NNxx	(beats)	54
pNNxx	(%)	29.5
RR triangular index		3.608
TINN	(ms)	180.0

Distributions*



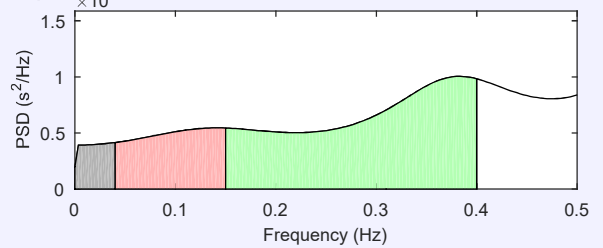
Frequency-Domain Results

FFT spectrum (Welch's periodogram: 300 s window with 50% overlap)



Frequency Band	Peak (Hz)	Power (ms ²)	Power (log)	Power (%)	Power (n.u.)
VLF (0-0.04 Hz)	0.0400	3	1.039	1.6	
LF (0.04-0.15 Hz)	0.1100	42	3.737	23.1	23.5
HF (0.15-0.4 Hz)	0.2600	135	4.904	74.3	75.4
Total		181	5.201		
LF/HF		0.312			

AR Spectrum (AR model order = 16, not factorized)

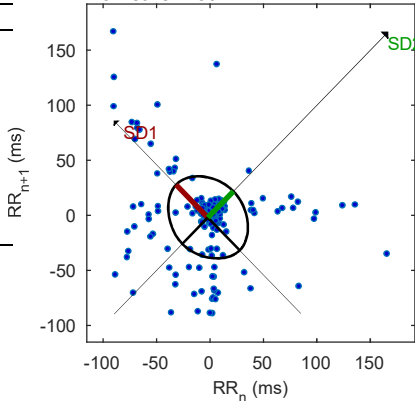


Frequency Band	Peak (Hz)	Power (ms ²)	Power (log)	Power (%)	Power (n.u.)
VLF (0-0.04 Hz)	0.0400	16	2.748	6.5	
LF (0.04-0.15 Hz)	0.1400	54	3.995	22.6	24.2
HF (0.15-0.4 Hz)	0.3833	168	5.124	70.0	74.9
Total		240	5.480		
LF/HF		0.323			

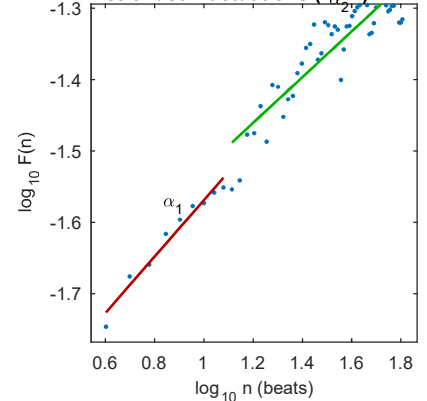
Nonlinear Results

Variable	Units	Value
Poincare Plot		
SD1	(ms)	42.1
SD2	(ms)	33.7
SD2/SD1		0.802
Approximate Entropy (ApEn)		0.786
Sample Entropy (SampEn)		0.867
Detrended Fluctuation Analysis (DFA)		
Short-term fluctuations, α_1		0.396
Long-term fluctuations, α_2		0.320

Poincare Plot



Detrended fluctuations (DFA)



*Results are calculated from the non-detrended selected RR series.