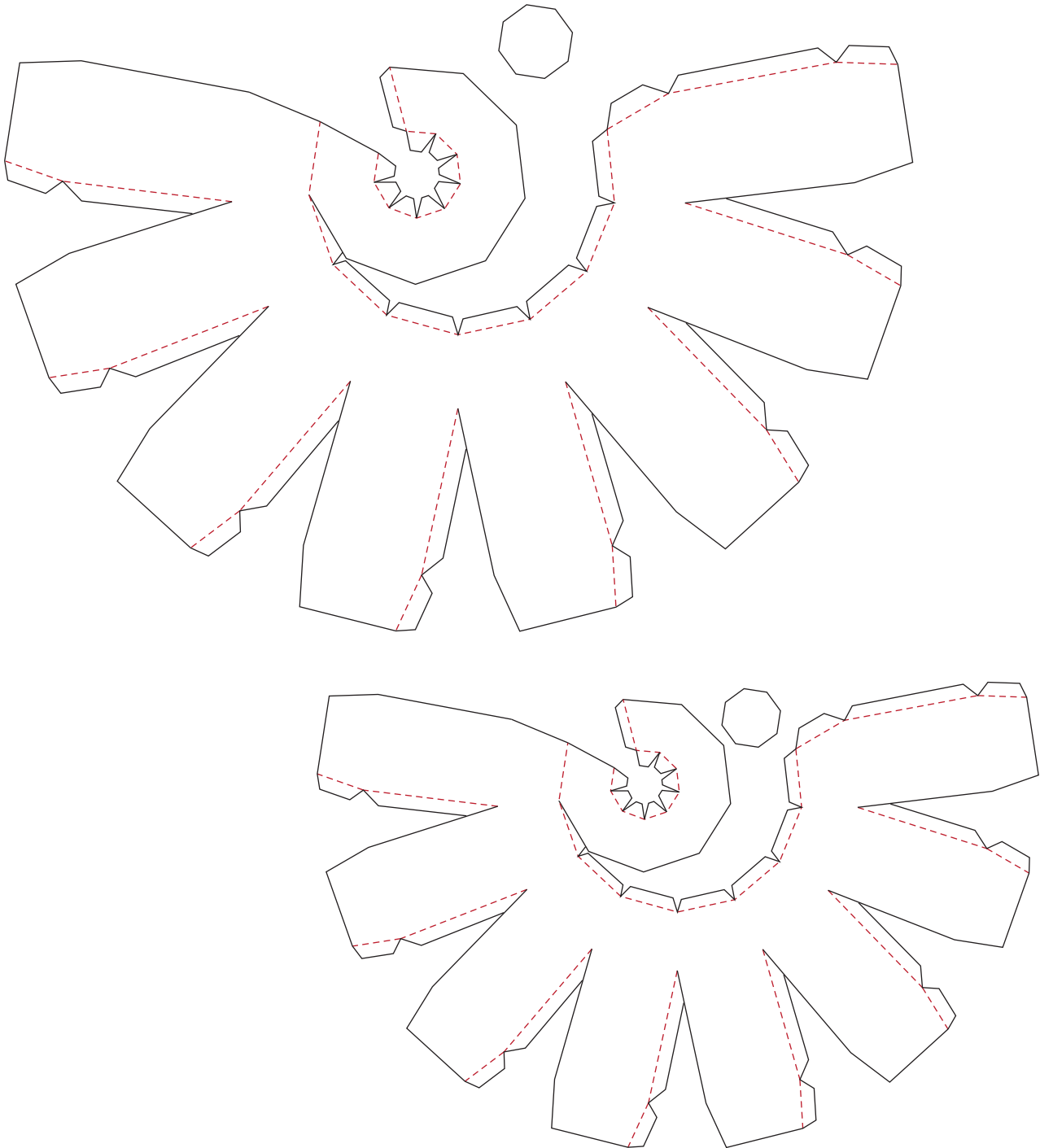


# VELLELA

## Planktonic Vessels

Cut the solid lines  
Score and fold the dotted lines  
Apply glue only to the folded tabs



This craft tutorial is created by paper artist, Cheryl Teo.  
Copyright © LULO © Cheryl Teo 2018 All rights reserved.  
For personal use only. Strictly not for sale or any commercial use.  
Please do not redistribute.

Research reported in this tutorial was supported by the National Academies Keck Futures Initiative of the National Academy of Sciences under award number NAKFI DBS17. The content is solely the responsibility of the authors and does not necessarily represent the official views of the National Academies Keck Futures Initiative or the National Academy of Sciences