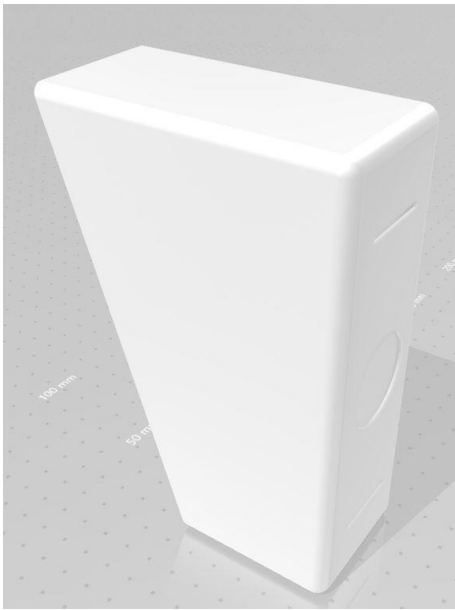


Night lamp / Bureau lamp

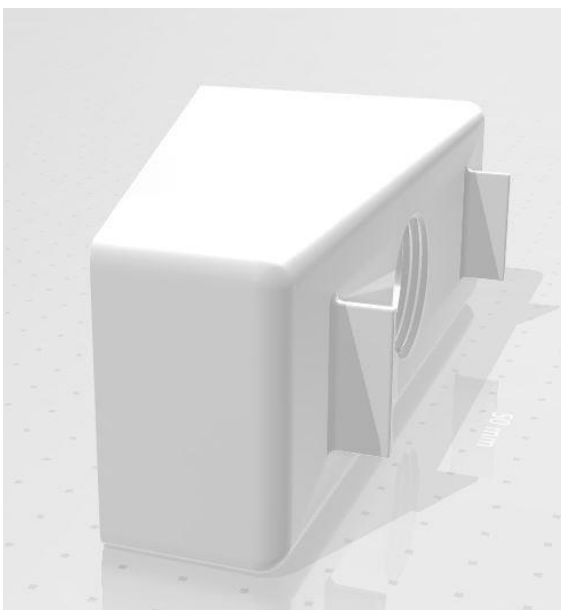
This is a budget lamp to place on your night stand. It gives a nice atmosphere to the room and is clear enough to read a book.

What you need

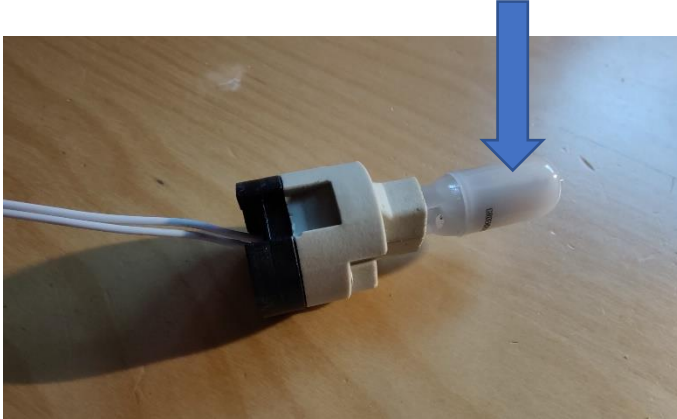
1) Cap



2) Stand



3) LED



4) LED connector



5) Cable → simple electrical cable of a length to your choosing. For this kind of application no tethering is needed.

6) Switch → you may chose a switch that you like, (simple on/off). With these LED's you can also opt for a dimmer.

7) Screw fitting



Maiken Vanhee

How to assemble

The assembly is very straight forward. The top en bottom part fit perfectly on top on another. For the fitment you will have to push it in the hole of the screw fitting. After you have done that you can screw it in the two assembled pieces. That's the assembly done.

For the cables it is also quite easy, just connect the connectors to the cable of your choosing. Just don't forget to put the switch in between.

How it should look

