

*Figure 1: Overview*

## **Office Chair arm adjustment lever.**

This arm adjustment pin fell out of my chair because two plastic locking pins broke off. One of the broken pins can be seen in the figure 1. it used to be stuck to the side of the lever.

The lever is made of a quite a soft feeling plastic, it is not very neatly made with a lot of fabrication marks on the square end. The rounded end feels very soft and is where the user interacts with it.

It has a hole in the square end where a spring needs to fit in.

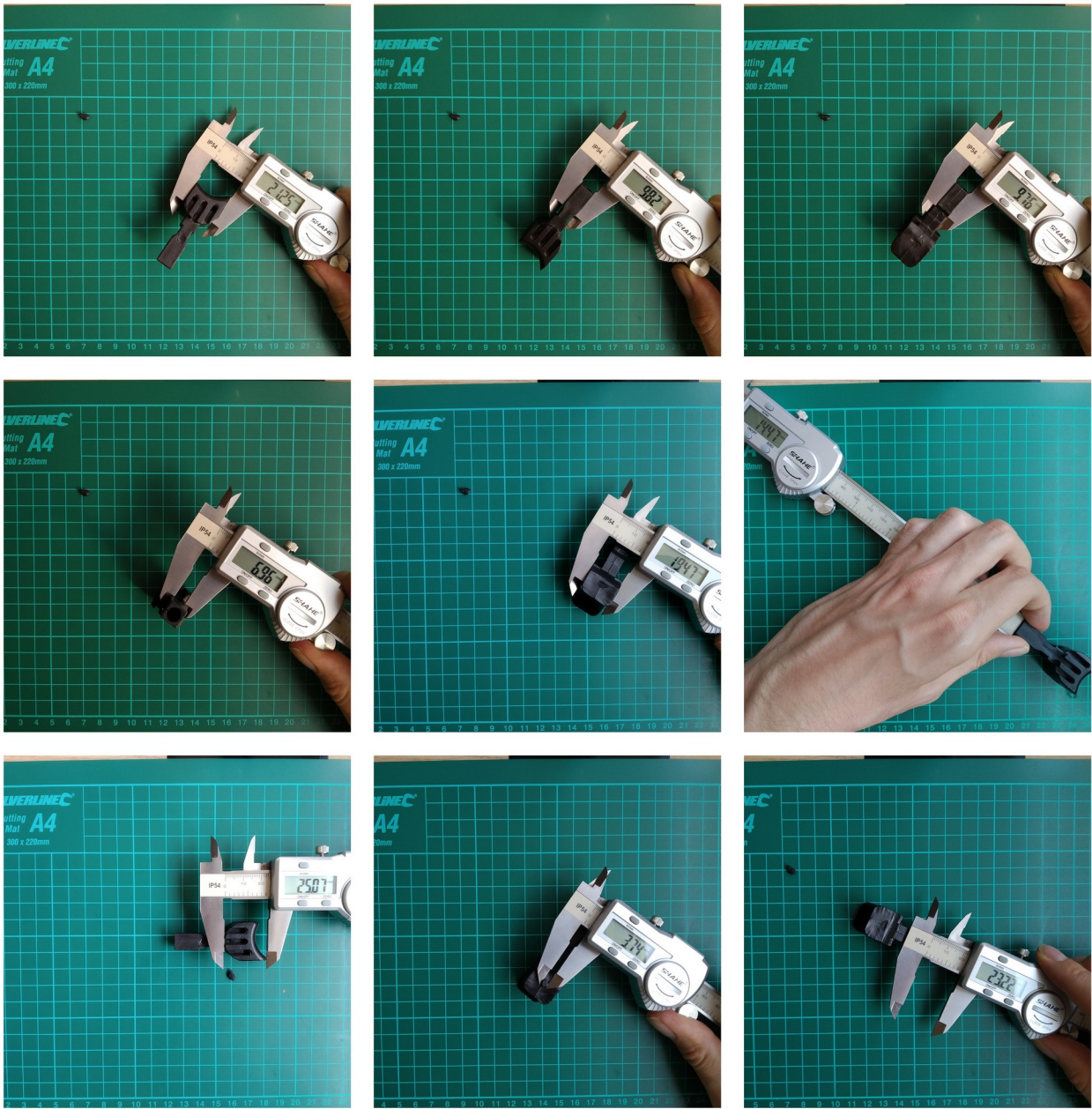


Figure 2: Collage 1



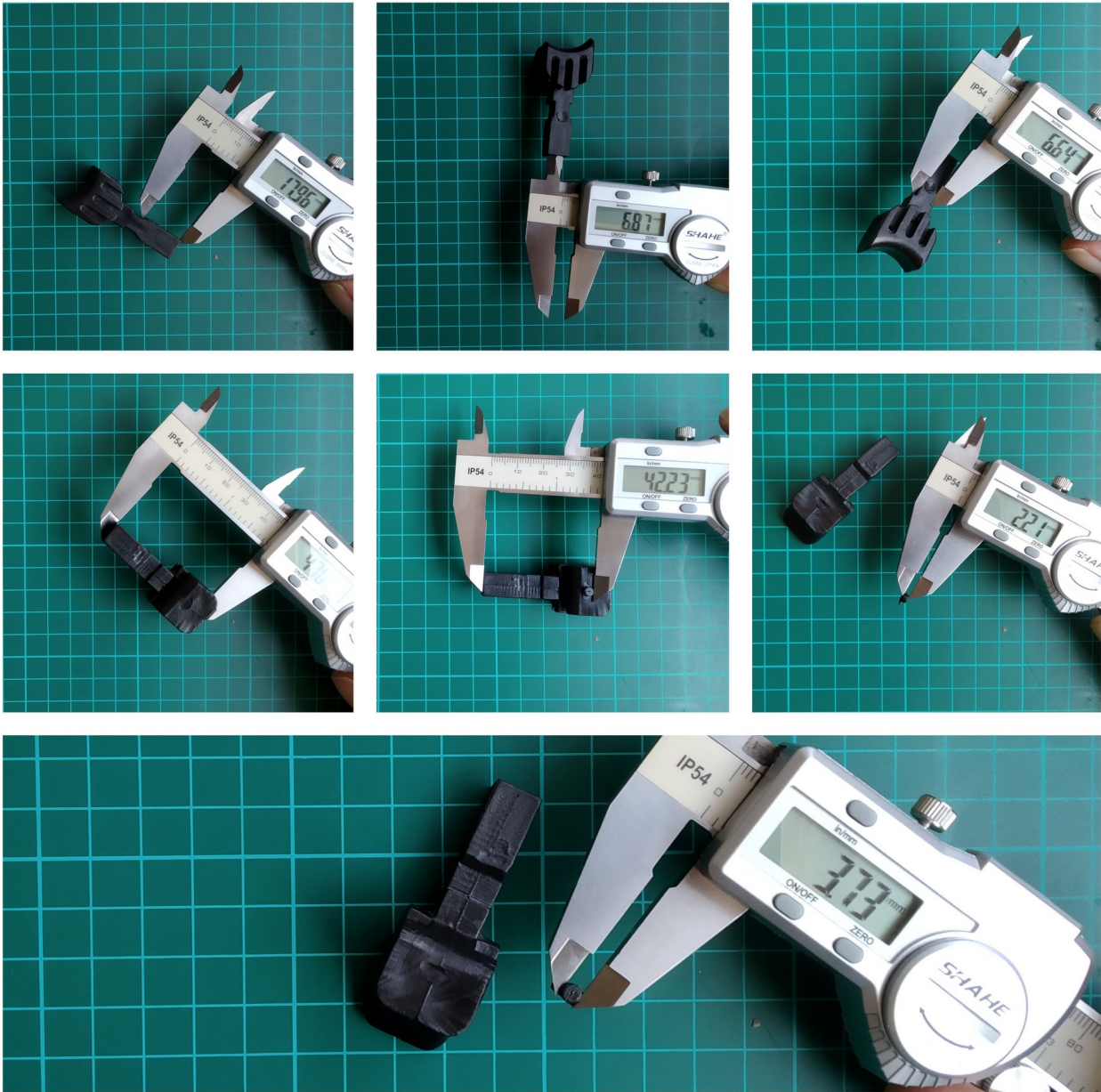


Figure 3: Collage 2