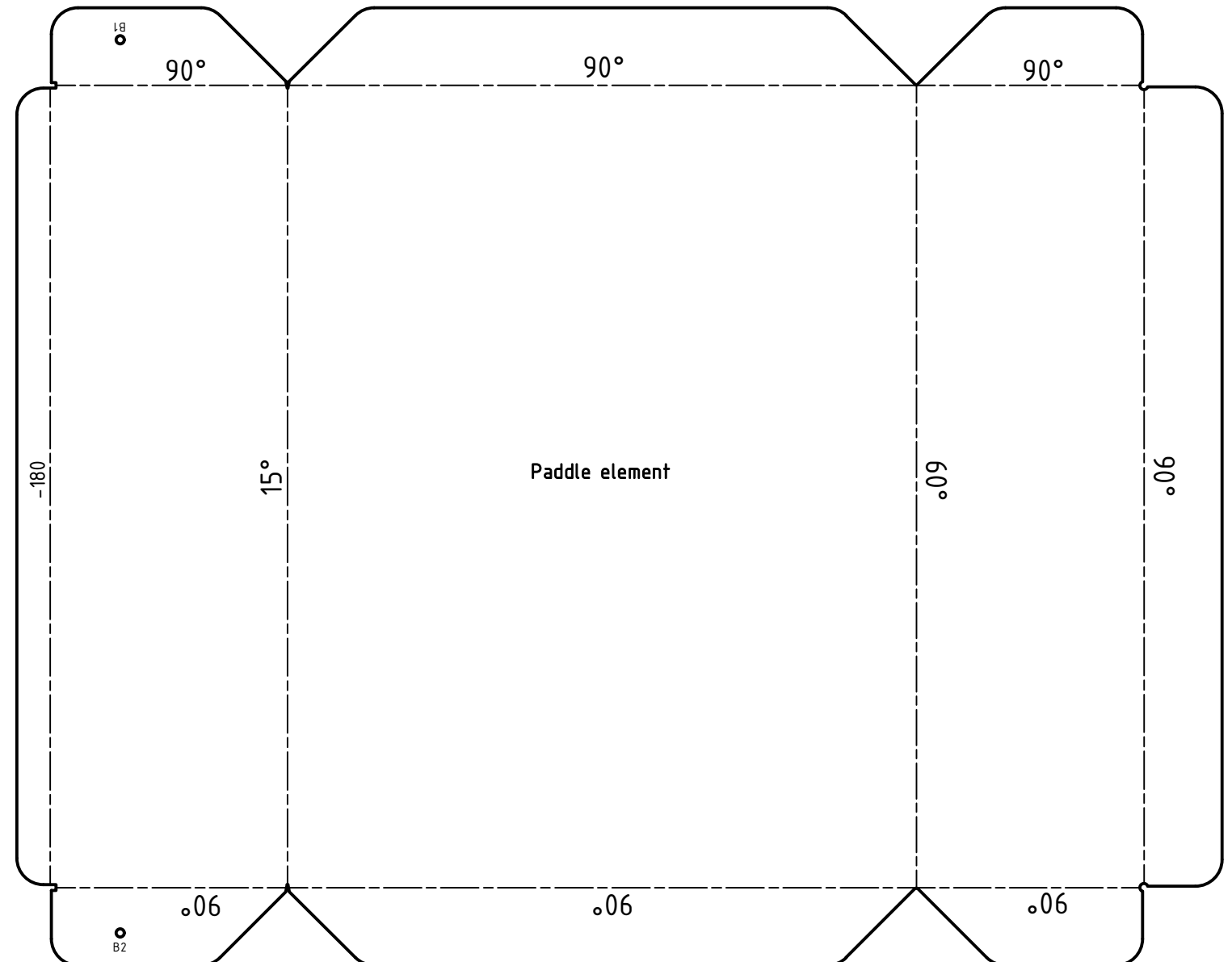
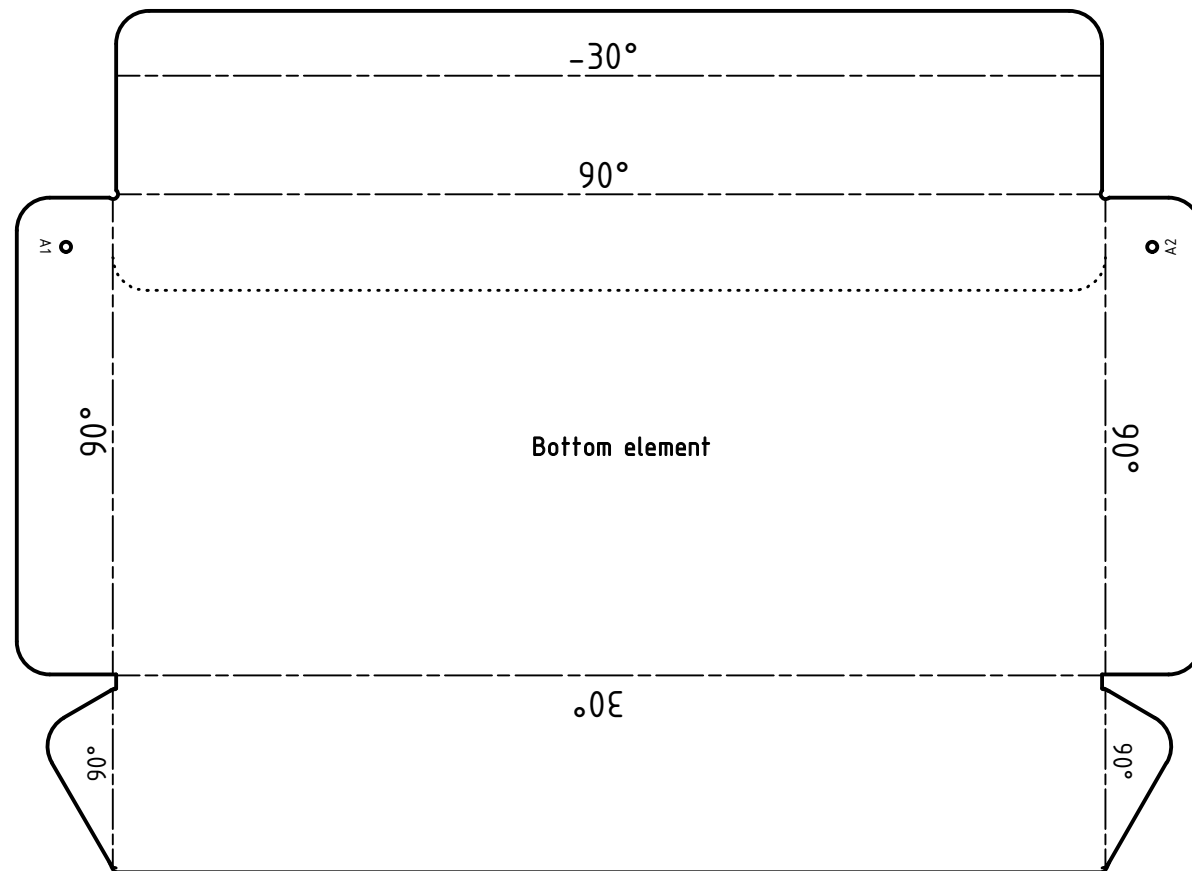
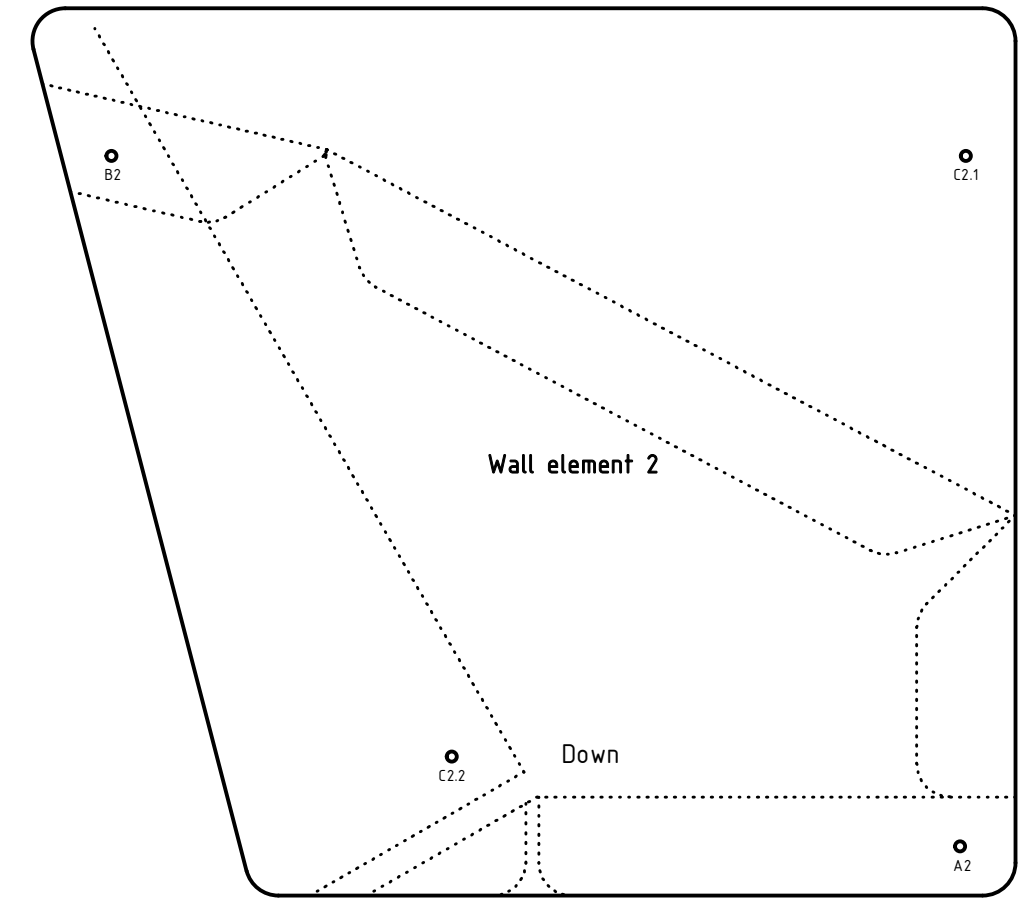
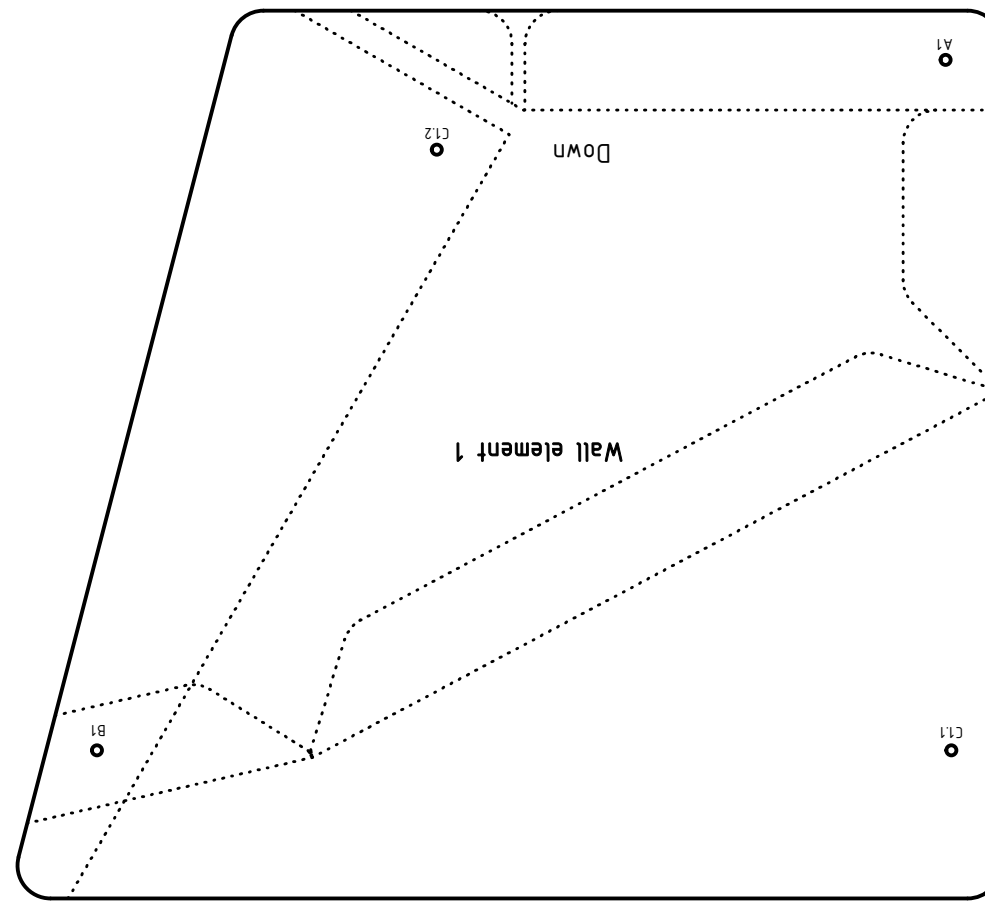


Instructions:

- Solid line = cut out
- Intermitent line = fold
- Dotted line = auxiliary line for gluing

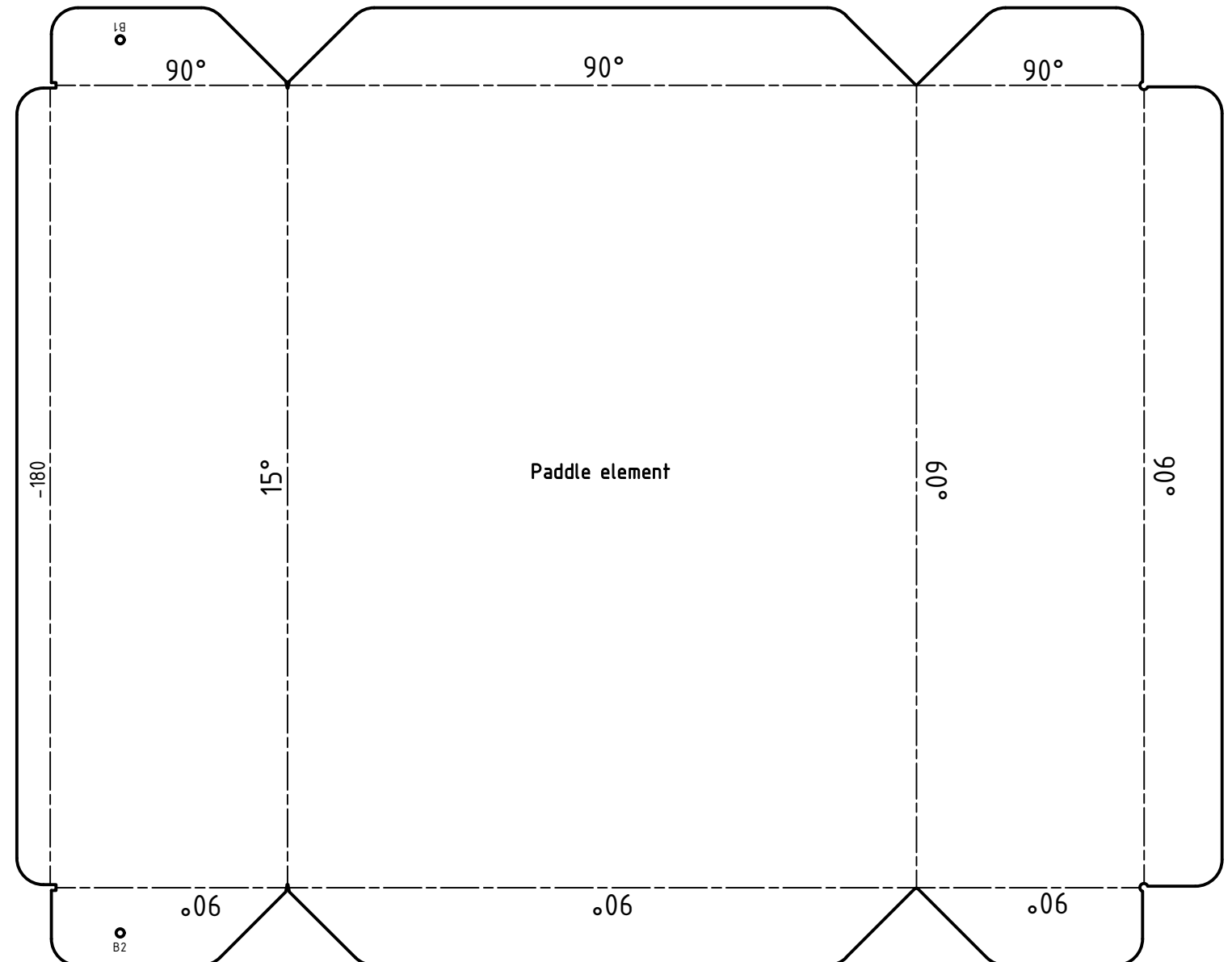
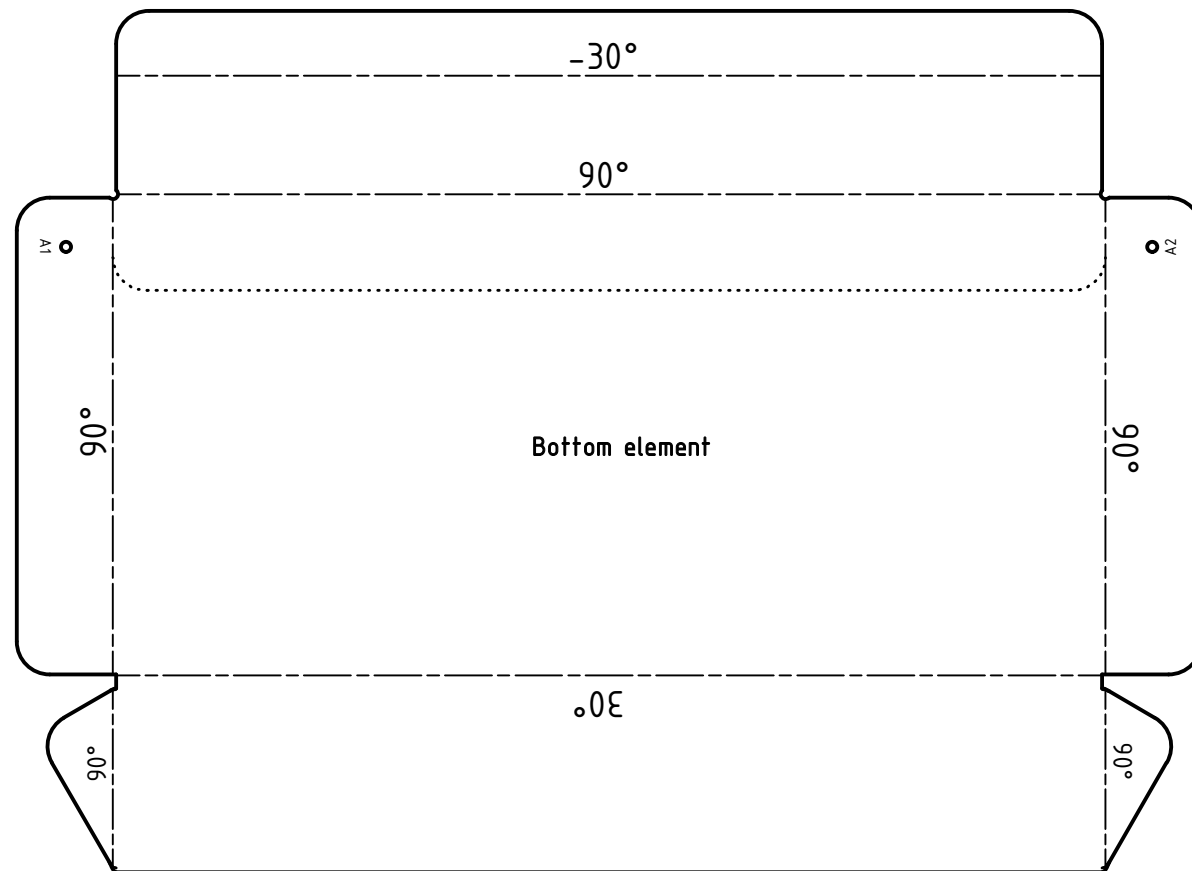
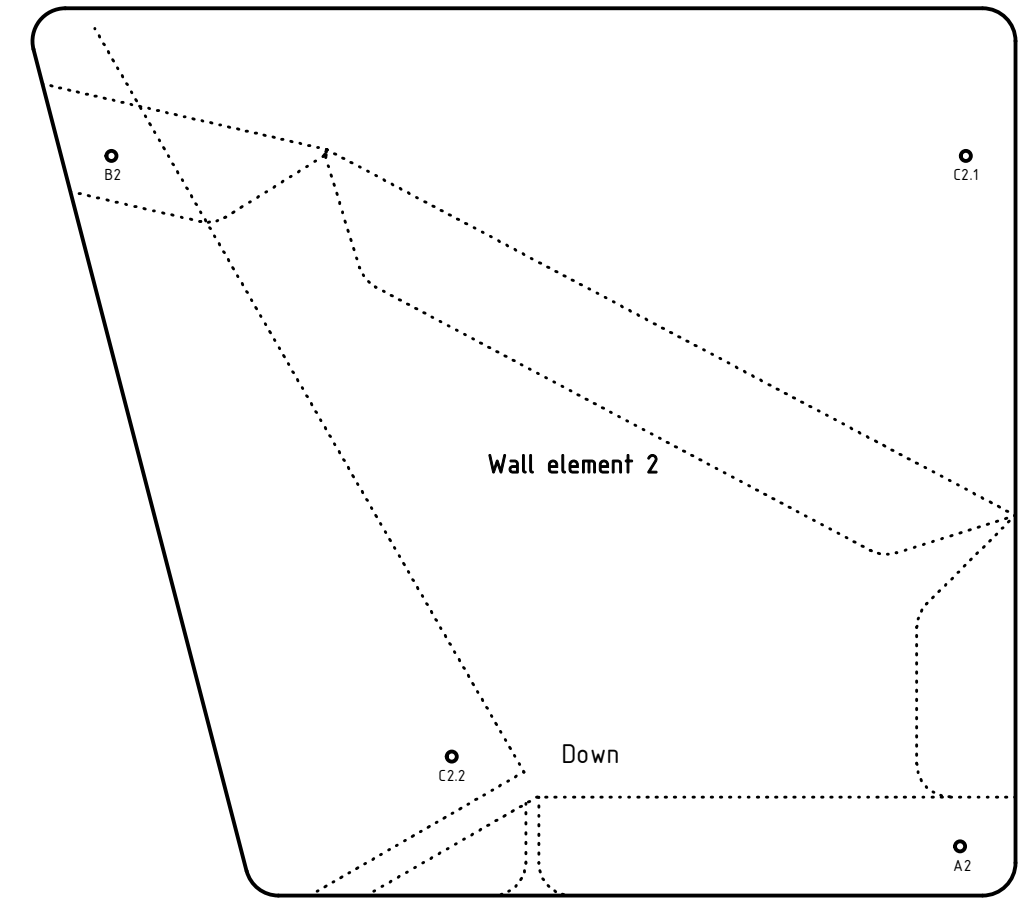
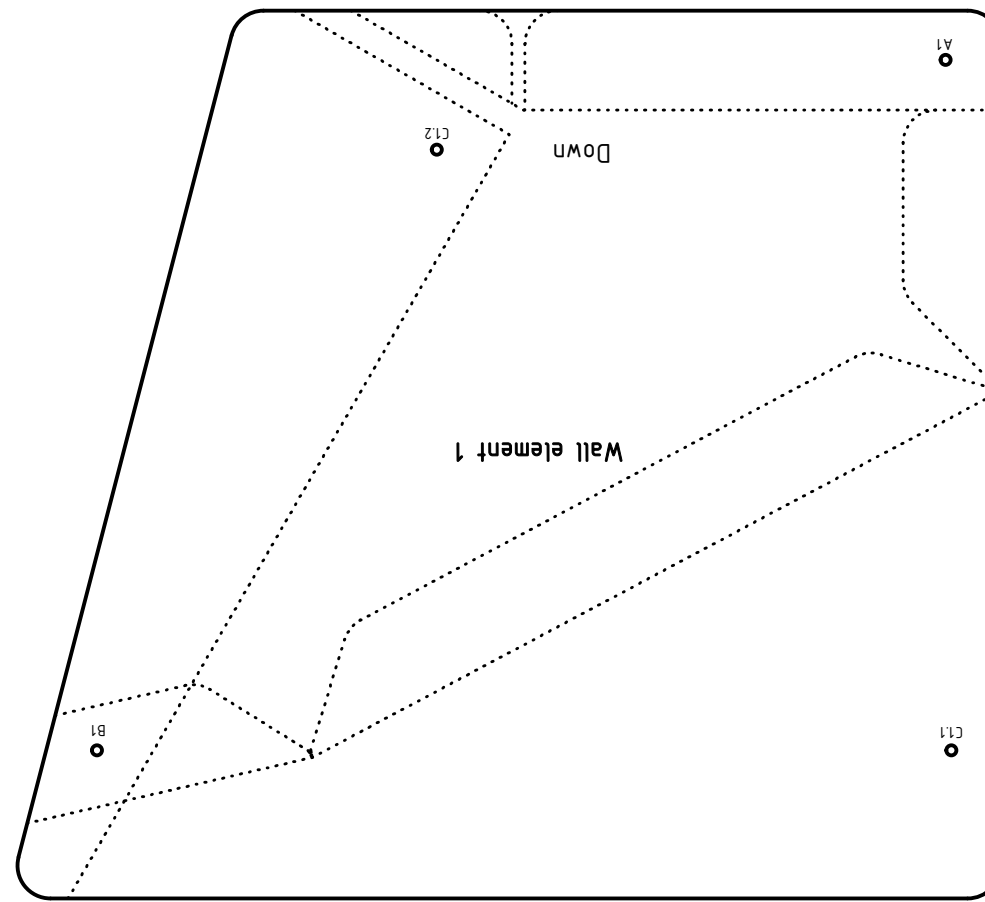
1. Cut out bottom, paddle and wall elements and side plate
 2. Fold positive angles upwards and negative angles downwards
 3. Glue wall element 2 to bottom element
 4. Glue paddle element to bottom and wall element 2 --> Important! Do not glue flap with B2 marking
 5. Glue wall element 1 to paddle and bottom elements --> Important! Do not glue flap with B1 marking
- > Module ready!
6. Glue module at B1/B2 to C1.1/C2.1 from the front module (Now glue the flaps with B1 and B2 marking)
 7. Glue module at A1/A2 to C1.2/C2.2 from the rear module
 8. Repeat for all 12 modules
 9. Glue side plates to the side of the modules (watch the symmetry)
- > Waterwheel ready!



Instructions:

- Solid line = cut out
- Intermitent line = fold
- Dotted line = auxiliary line for gluing

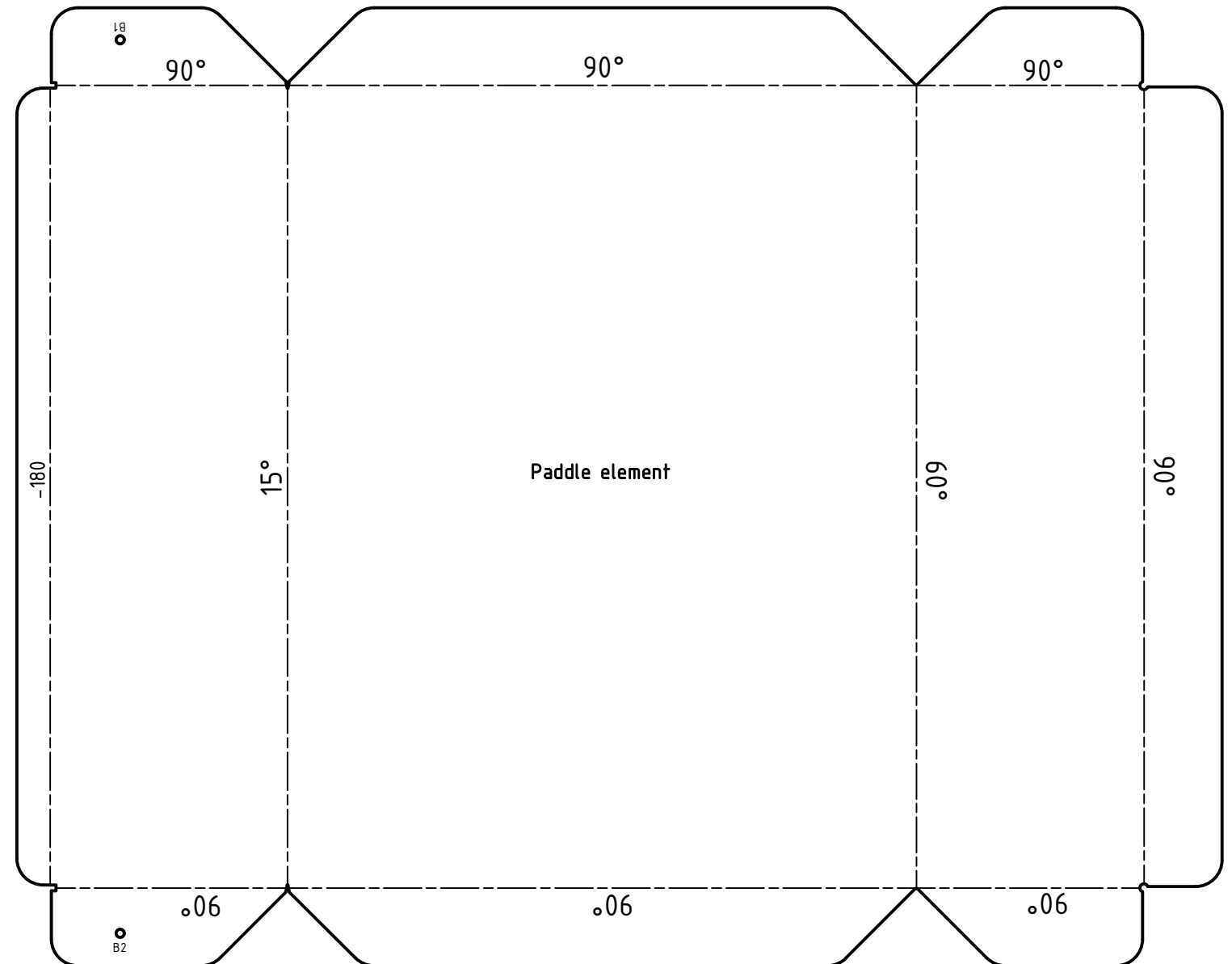
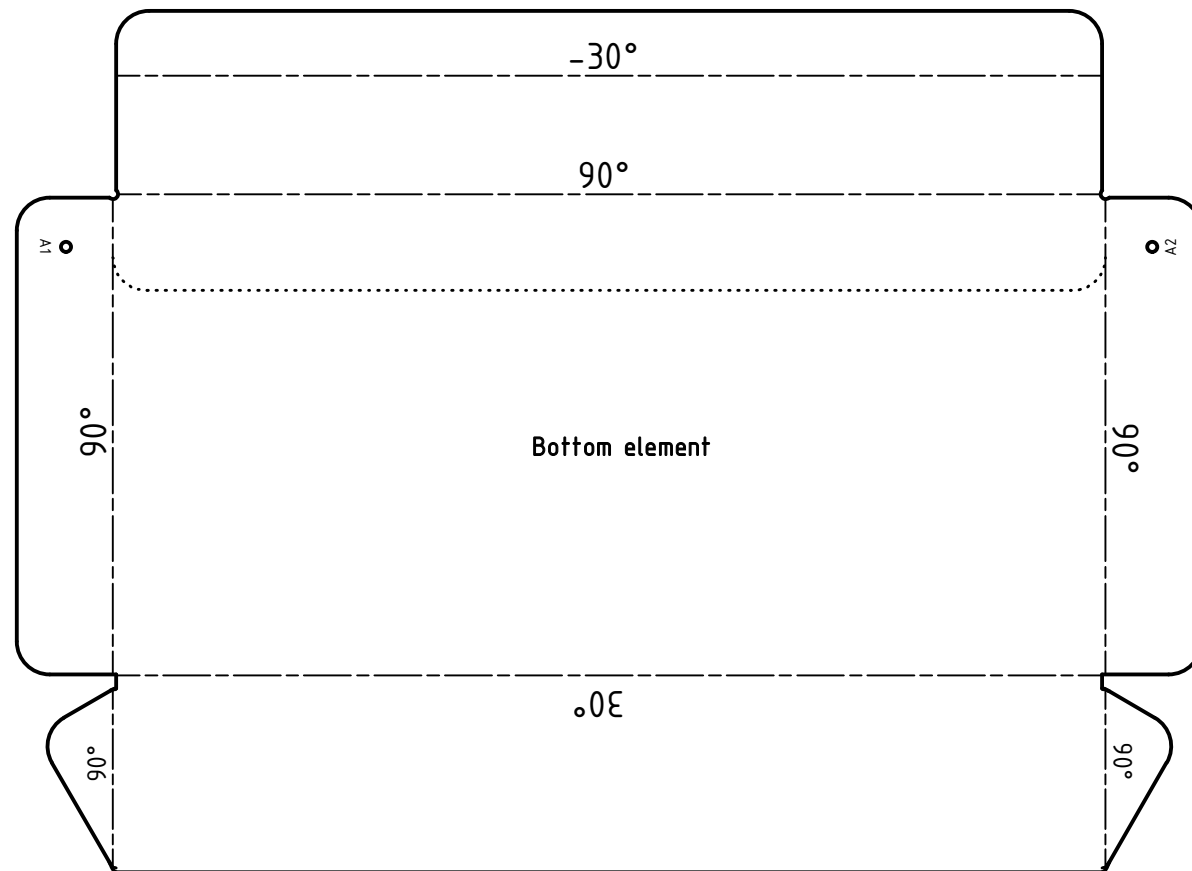
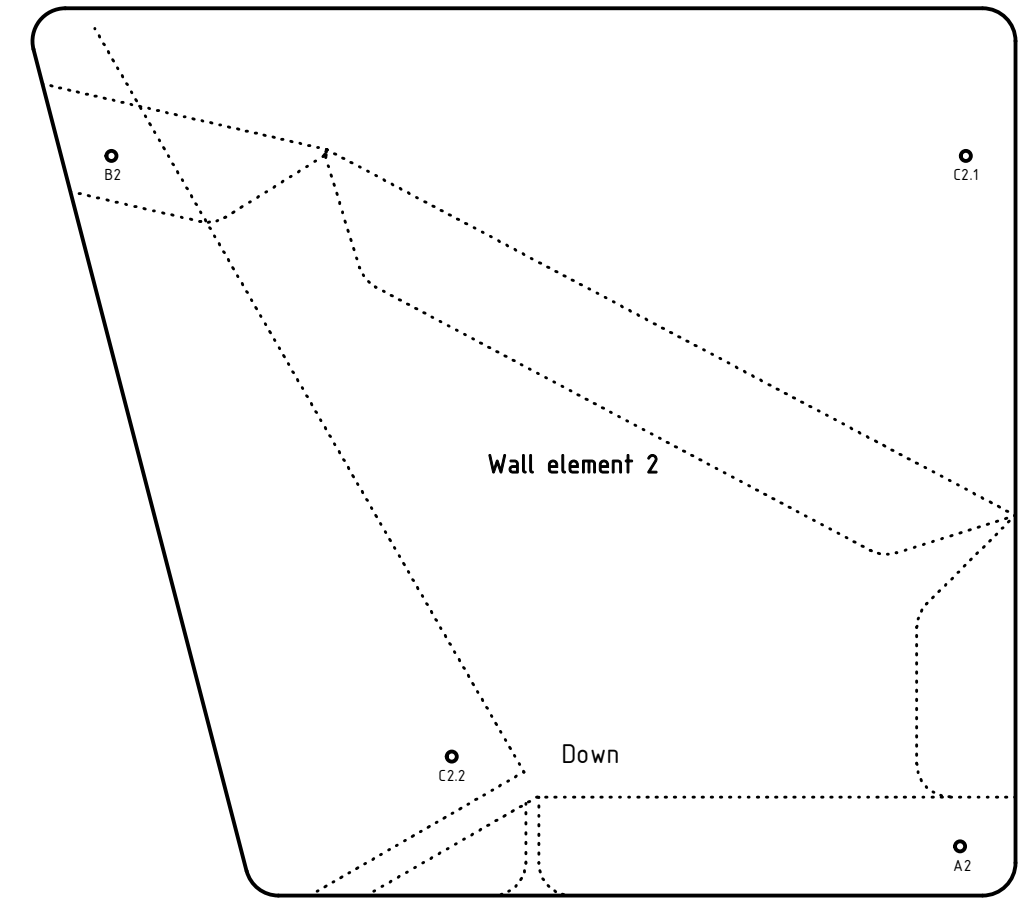
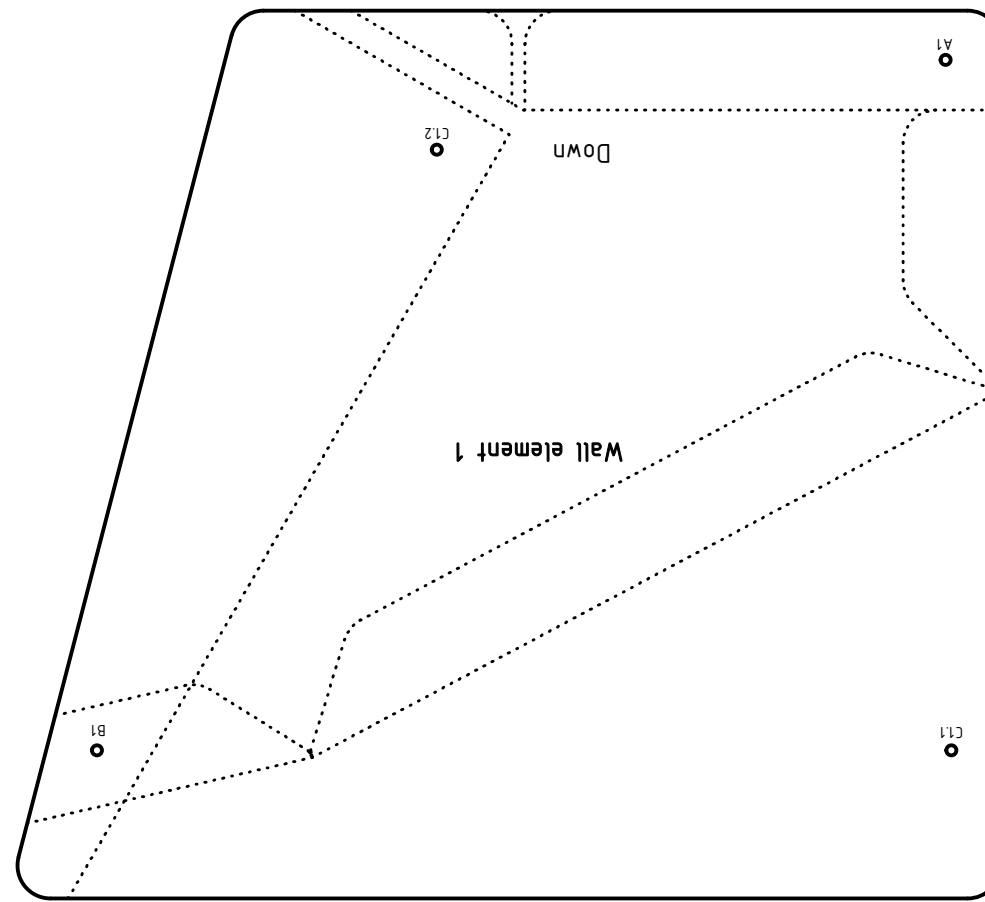
1. Cut out bottom, paddle and wall elements and side plate
 2. Fold positive angles upwards and negative angles downwards
 3. Glue wall element 2 to bottom element
 4. Glue paddle element to bottom and wall element 2 --> Important! Do not glue flap with B2 marking
 5. Glue wall element 1 to paddle and bottom elements --> Important! Do not glue flap with B1 marking
- > Module ready!
6. Glue module at B1/B2 to C1.1/C2.1 from the front module (Now glue the flaps with B1 and B2 marking)
 7. Glue module at A1/A2 to C1.2/C2.2 from the rear module
 8. Repeat for all 12 modules
 9. Glue side plates to the side of the modules (watch the symmetry)
- > Waterwheel ready!



Instructions:

- Solid line = cut out
- Intermitent line = fold
- Dotted line = auxiliary line for gluing

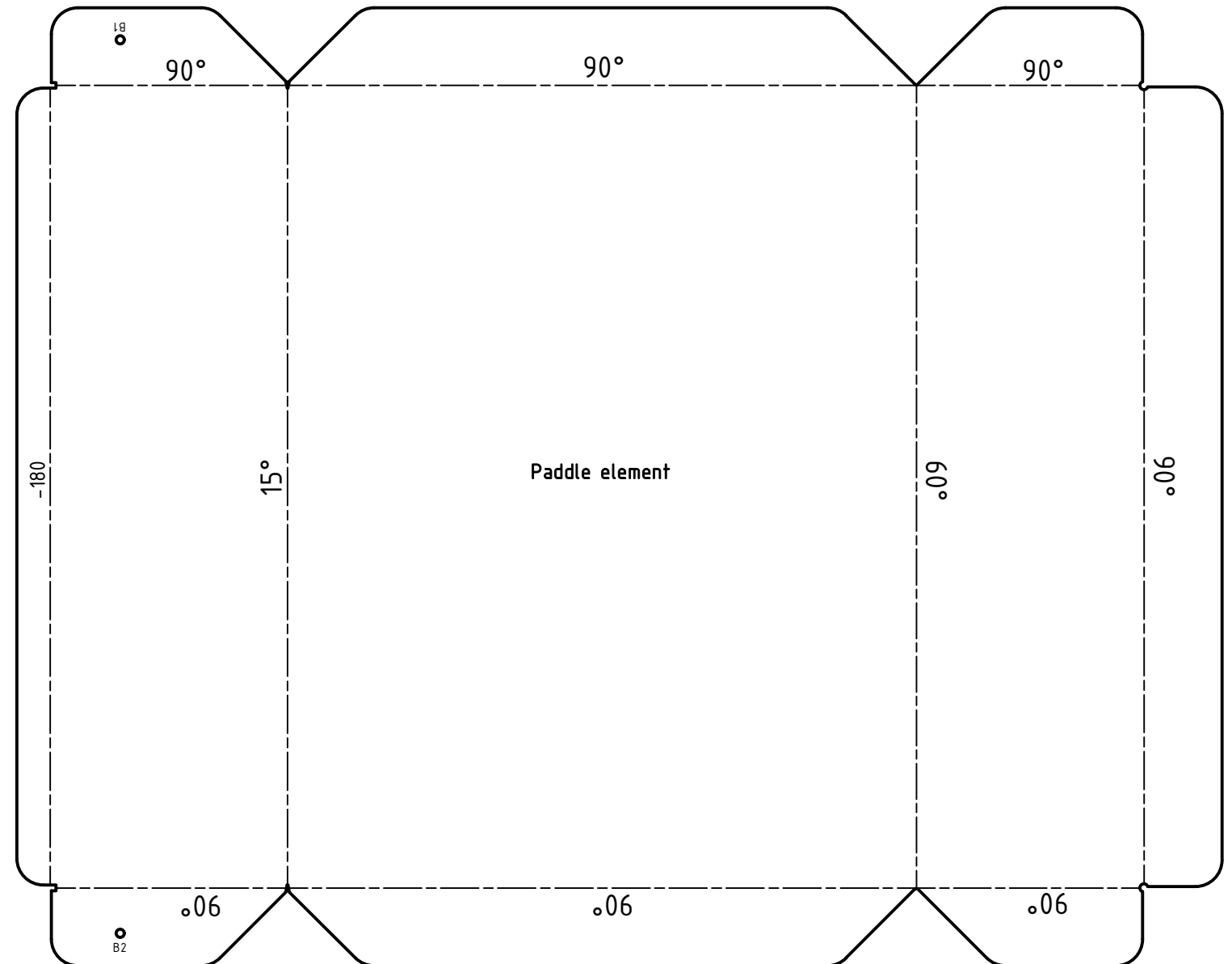
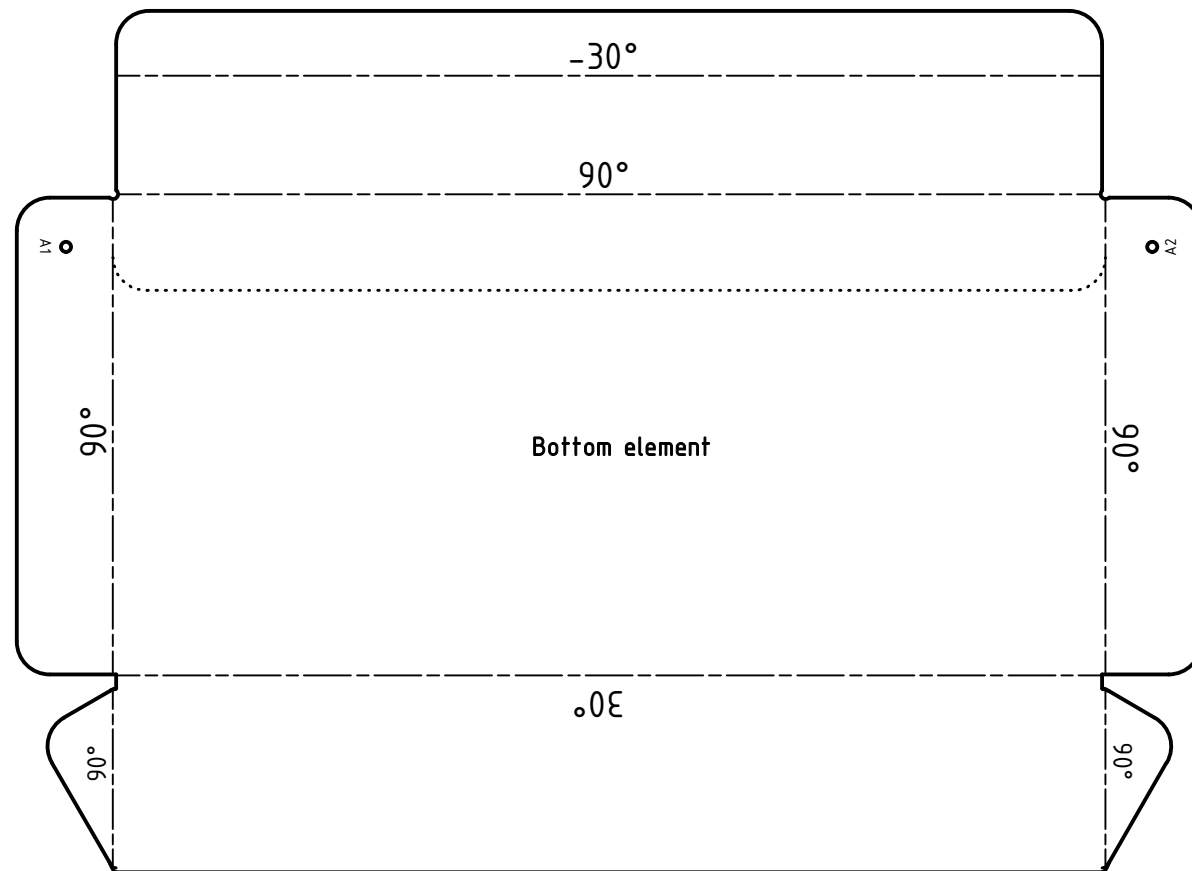
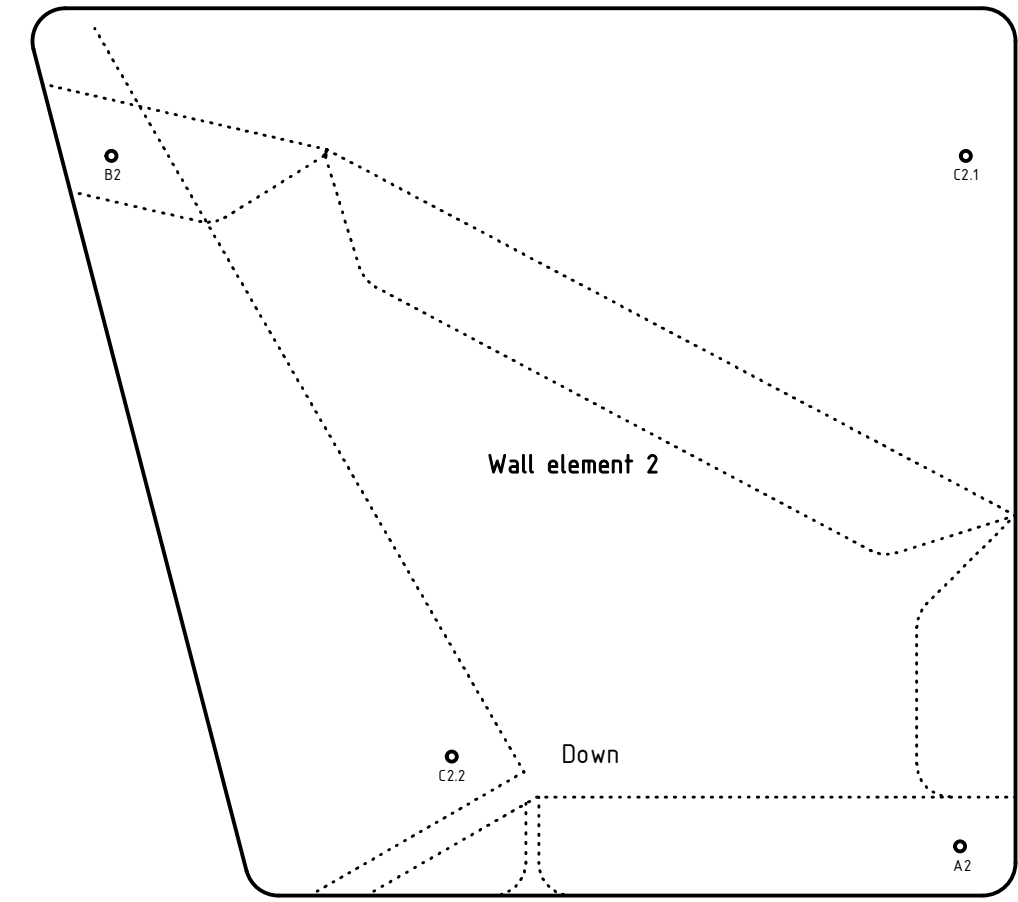
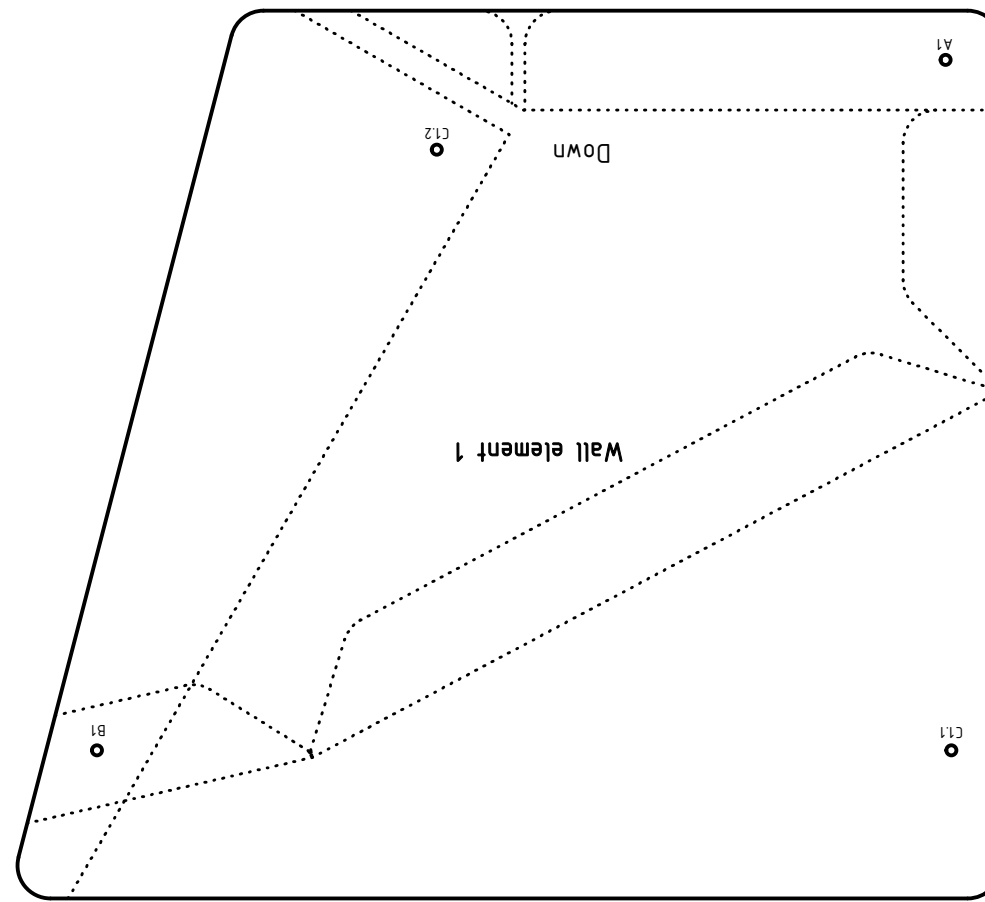
1. Cut out bottom, paddle and wall elements and side plate
2. Fold positive angles upwards and negative angles downwards
3. Glue wall element 2 to bottom element
4. Glue paddle element to bottom and wall element 2 --> Important! Do not glue flap with B2 marking
5. Glue wall element 1 to paddle and bottom elements --> Important! Do not glue flap with B1 marking
- > Module ready!
6. Glue module at B1/B2 to C1.1/C2.1 from the front module (Now glue the flaps with B1 and B2 marking)
7. Glue module at A1/A2 to C1.2/C2.2 from the rear module
8. Repeat for all 12 modules
9. Glue side plates to the side of the modules (watch the symmetry)
- > Waterwheel ready!



Instructions:

- Solid line = cut out
- Intermitent line = fold
- Dotted line = auxiliary line for gluing

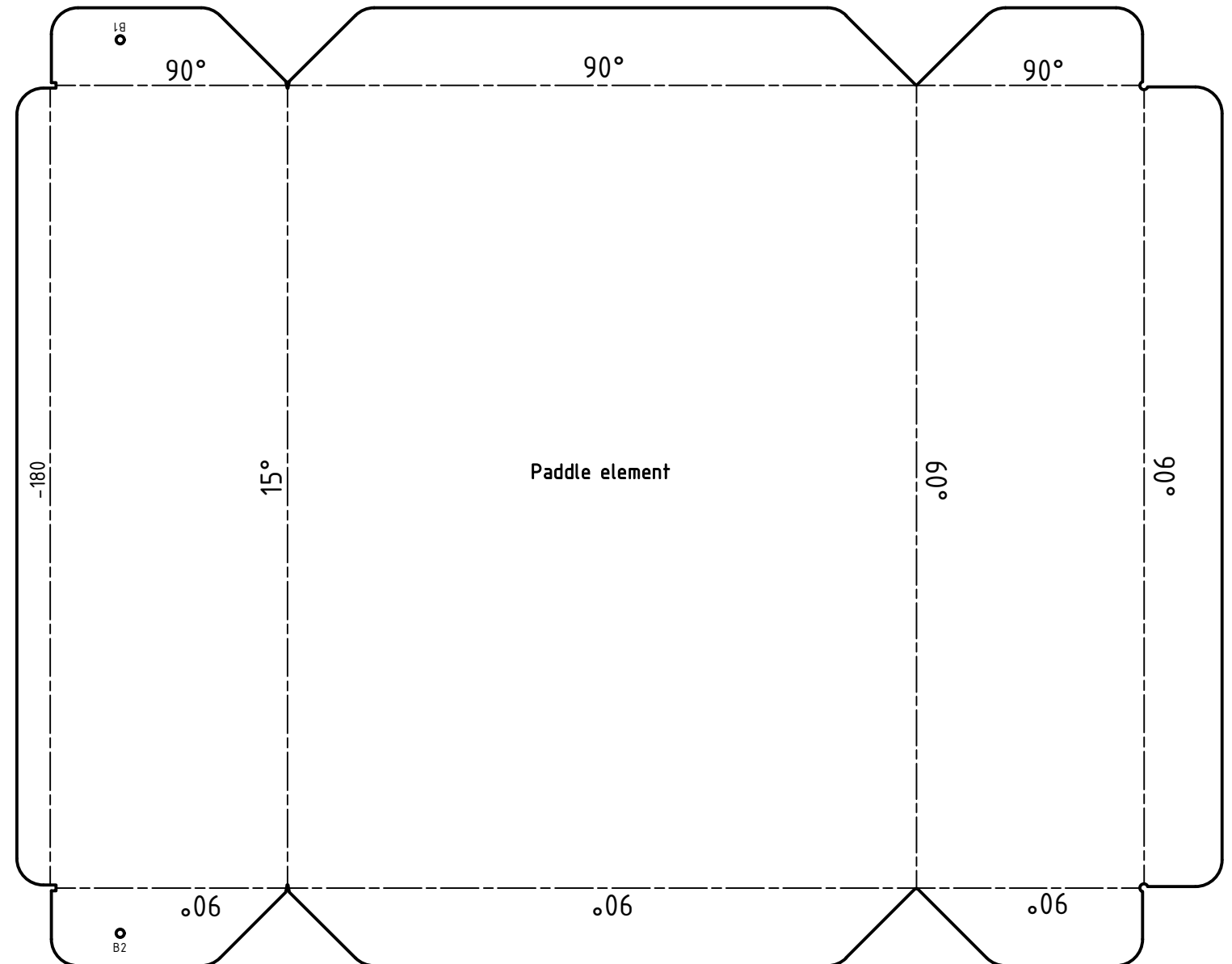
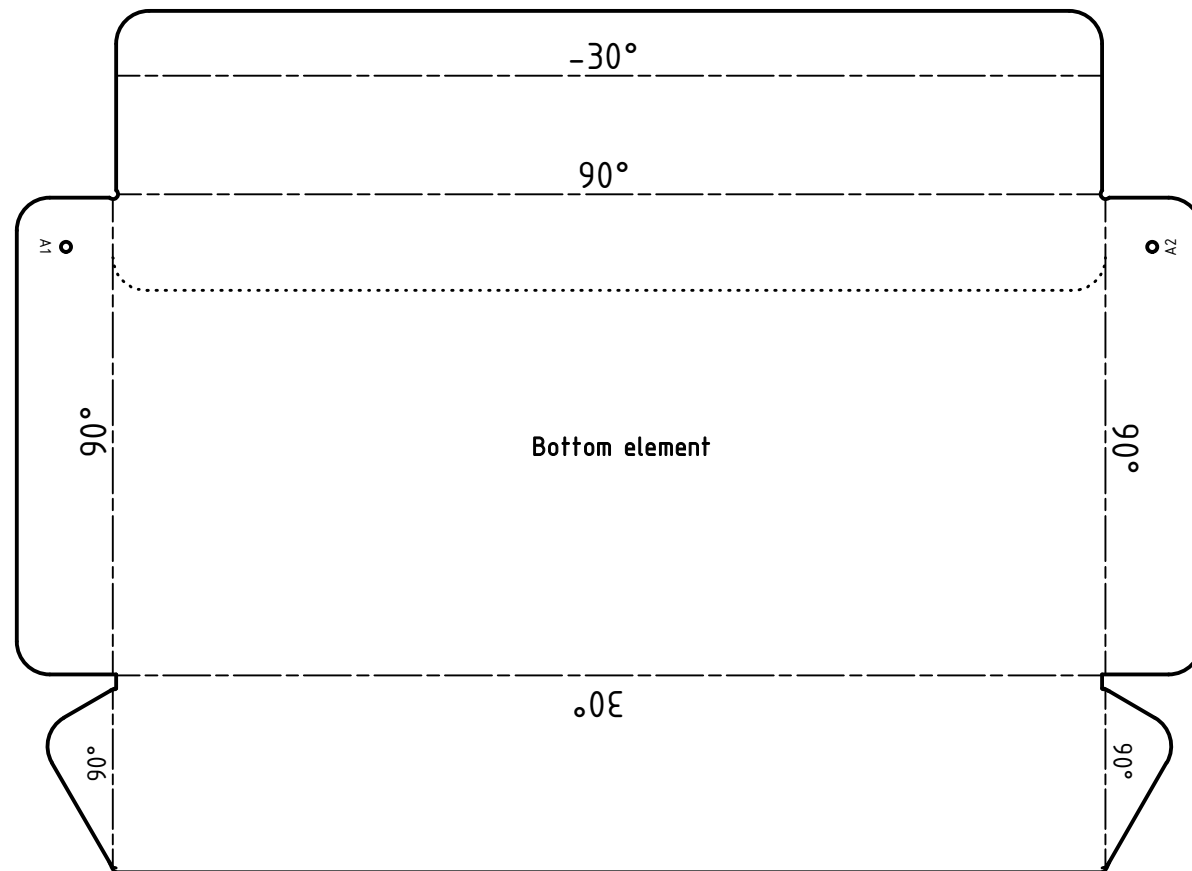
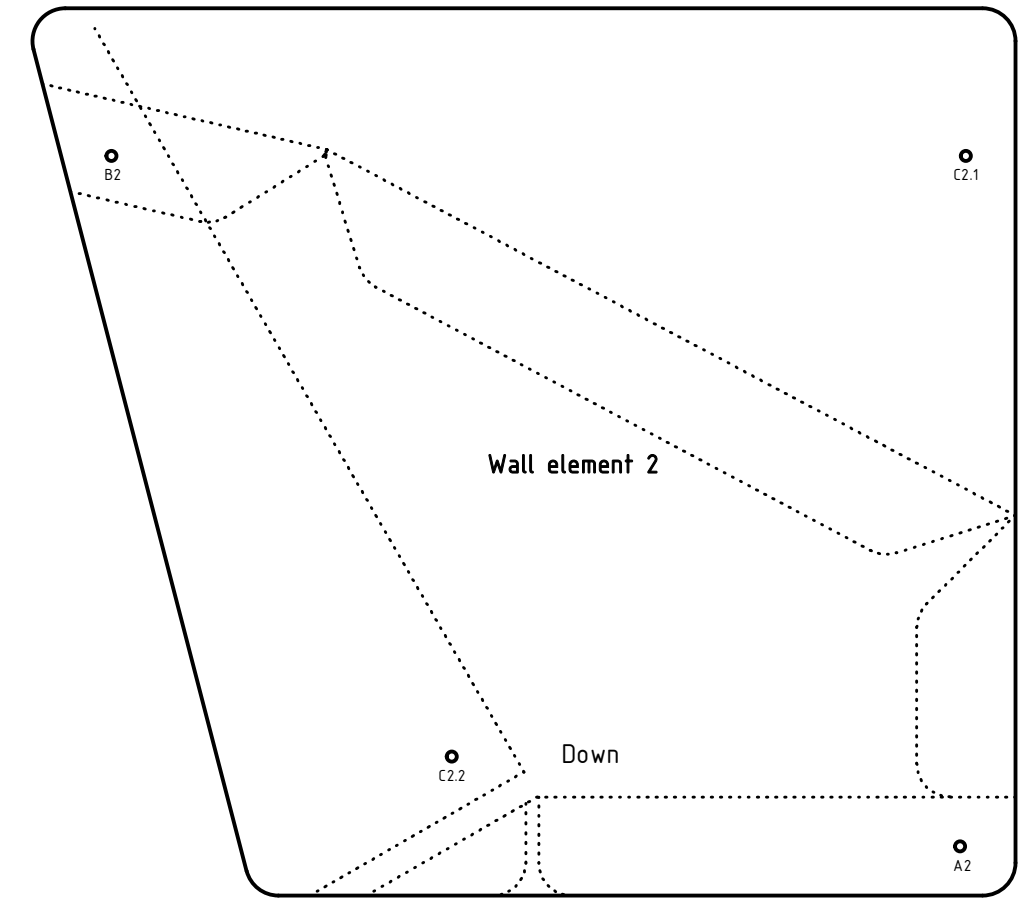
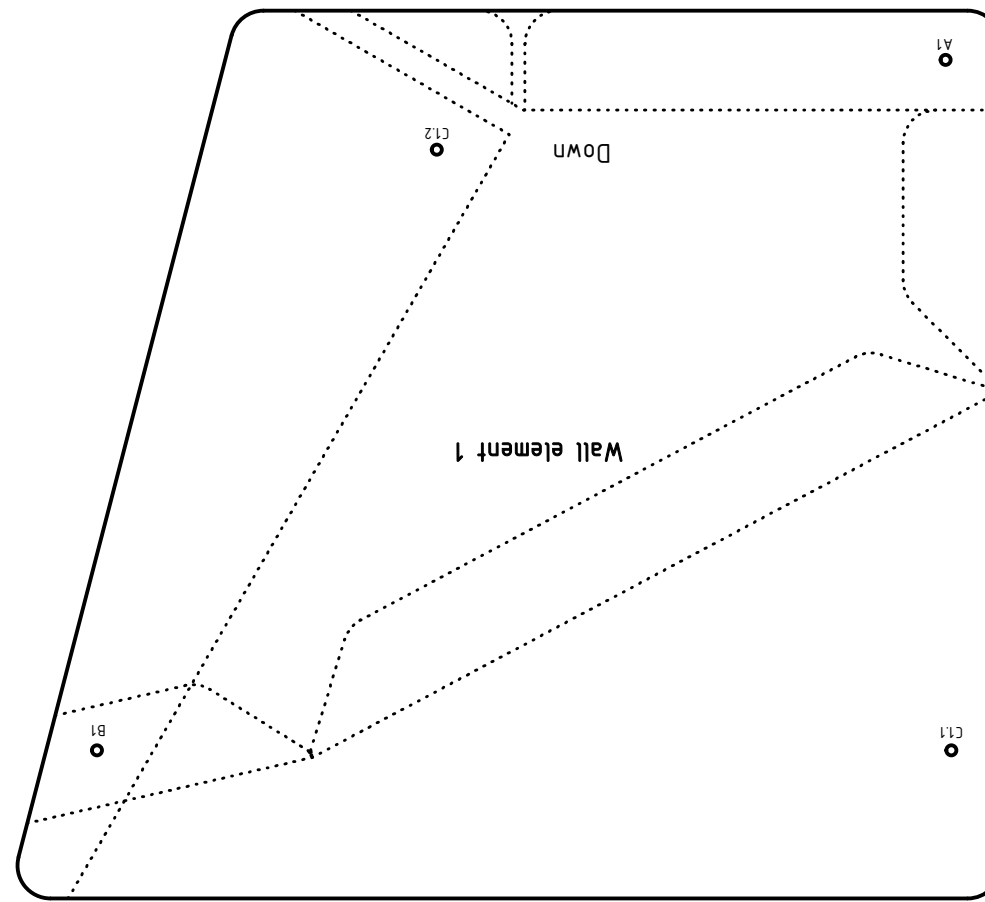
1. Cut out bottom, paddle and wall elements and side plate
2. Fold positive angles upwards and negative angles downwards
3. Glue wall element 2 to bottom element
4. Glue paddle element to bottom and wall element 2 --> Important! Do not glue flap with B2 marking
5. Glue wall element 1 to paddle and bottom elements --> Important! Do not glue flap with B1 marking
- > Module ready!
6. Glue module at B1/B2 to C1.1/C2.1 from the front module (Now glue the flaps with B1 and B2 marking)
7. Glue module at A1/A2 to C1.2/C2.2 from the rear module
8. Repeat for all 12 modules
9. Glue side plates to the side of the modules (watch the symmetry)
- > Waterwheel ready!



Instructions:

- Solid line = cut out
- Intermitent line = fold
- Dotted line = auxiliary line for gluing

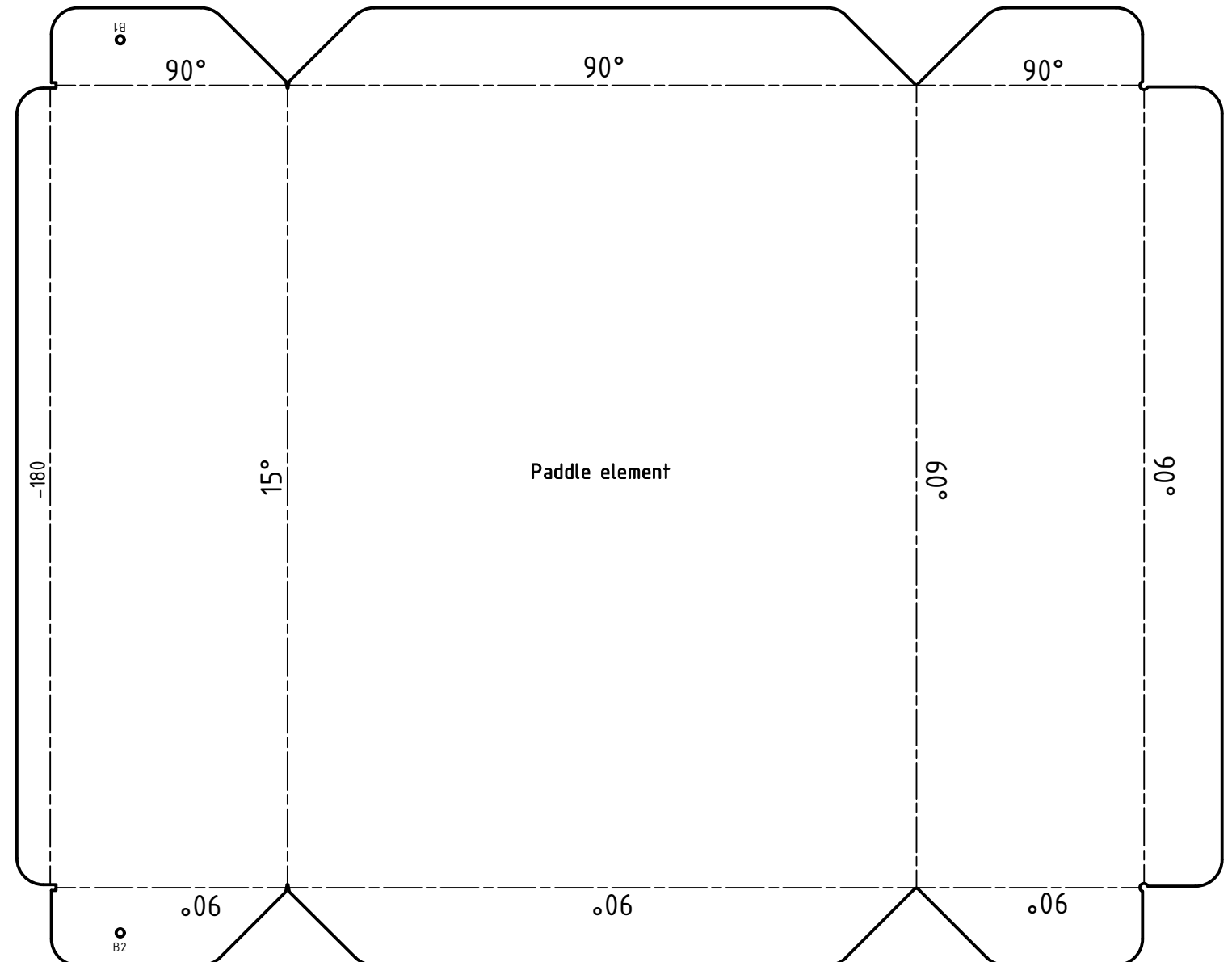
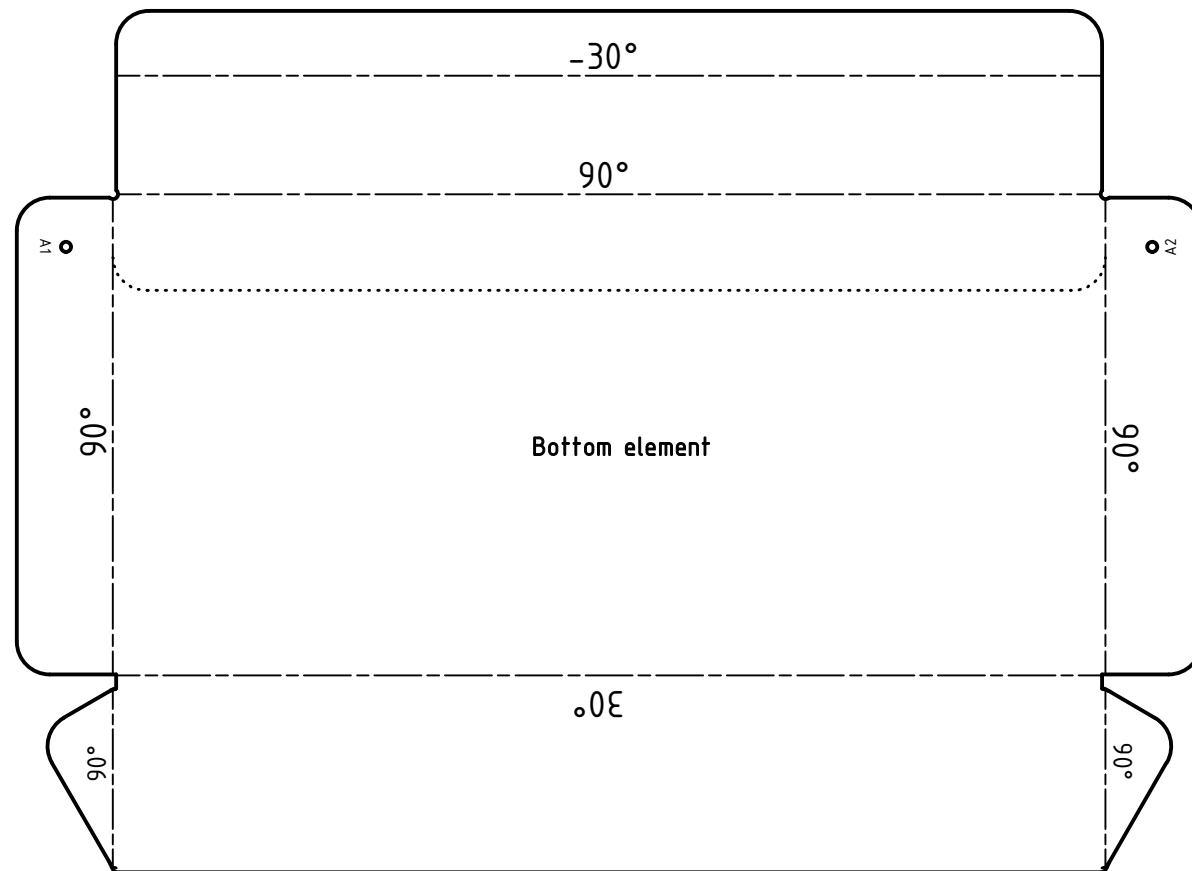
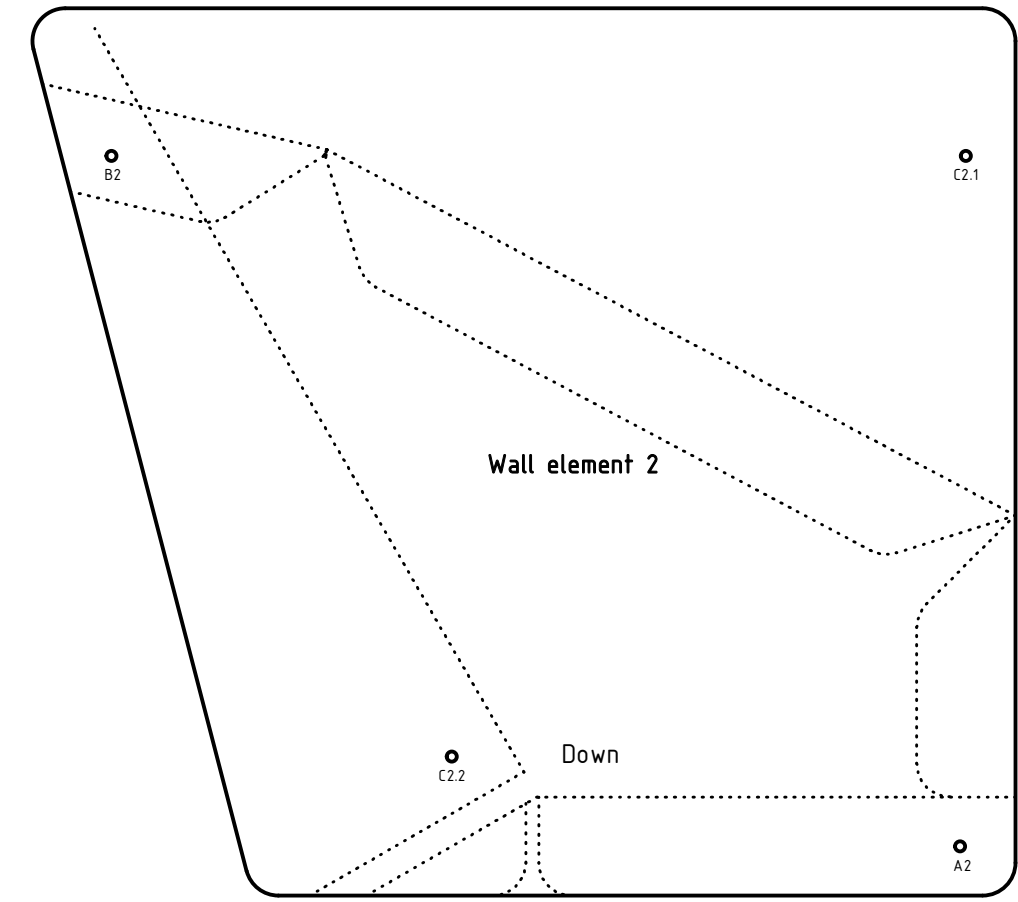
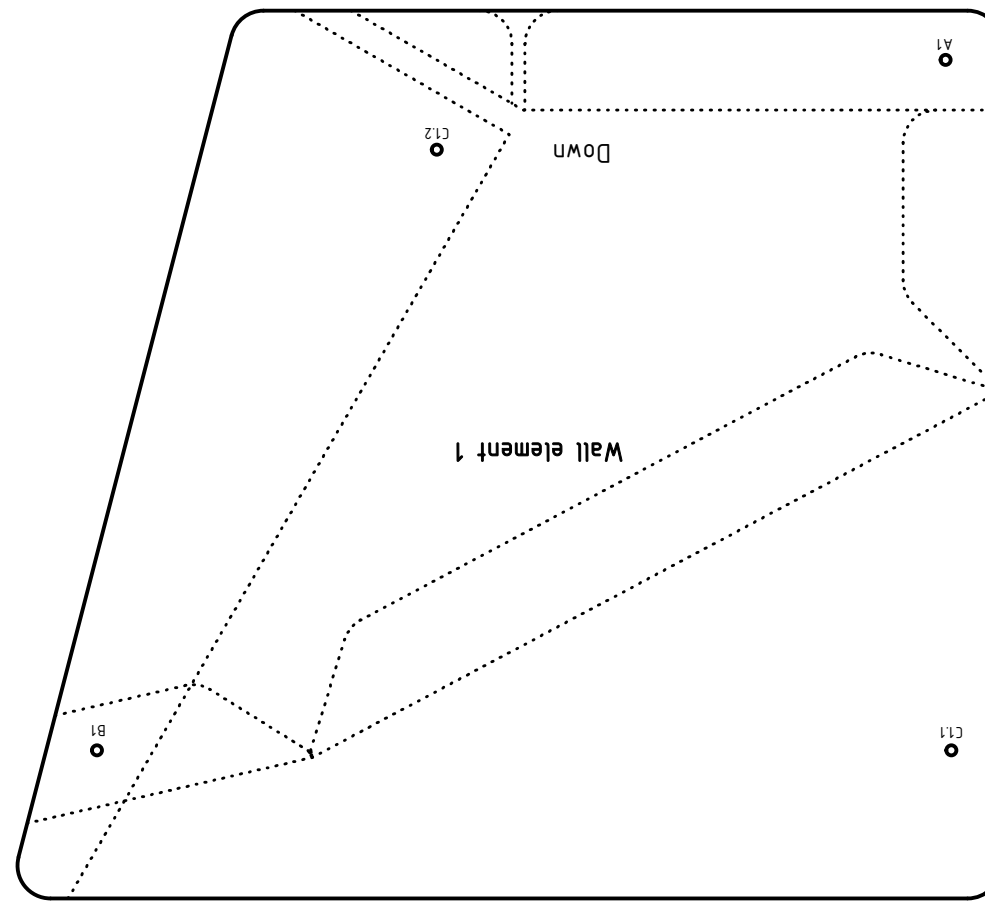
1. Cut out bottom, paddle and wall elements and side plate
 2. Fold positive angles upwards and negative angles downwards
 3. Glue wall element 2 to bottom element
 4. Glue paddle element to bottom and wall element 2 --> Important! Do not glue flap with B2 marking
 5. Glue wall element 1 to paddle and bottom elements --> Important! Do not glue flap with B1 marking
- > Module ready!
6. Glue module at B1/B2 to C1.1/C2.1 from the front module (Now glue the flaps with B1 and B2 marking)
 7. Glue module at A1/A2 to C1.2/C2.2 from the rear module
 8. Repeat for all 12 modules
 9. Glue side plates to the side of the modules (watch the symmetry)
- > Waterwheel ready!



Instructions:

- Solid line = cut out
- Intermitent line = fold
- Dotted line = auxiliary line for gluing

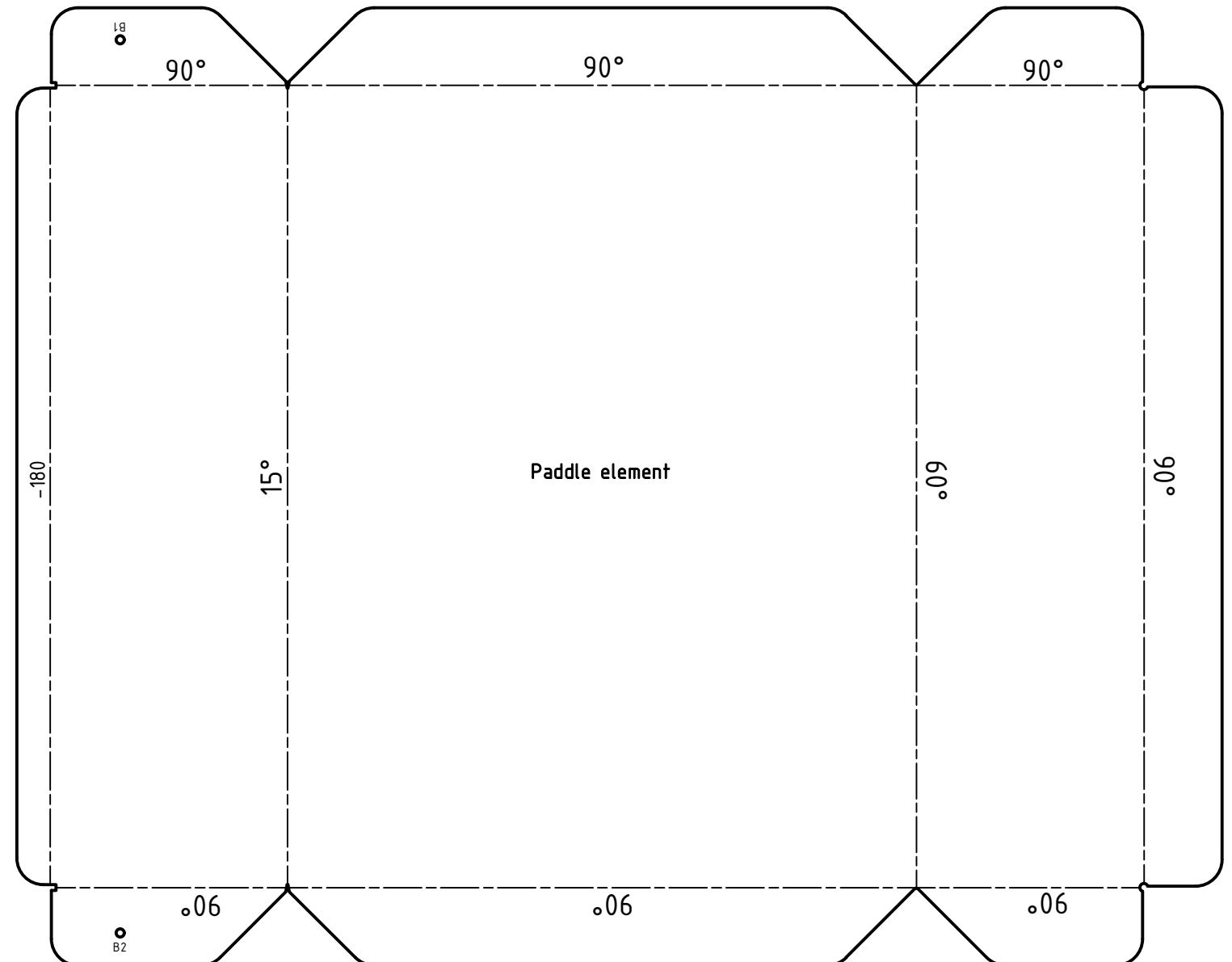
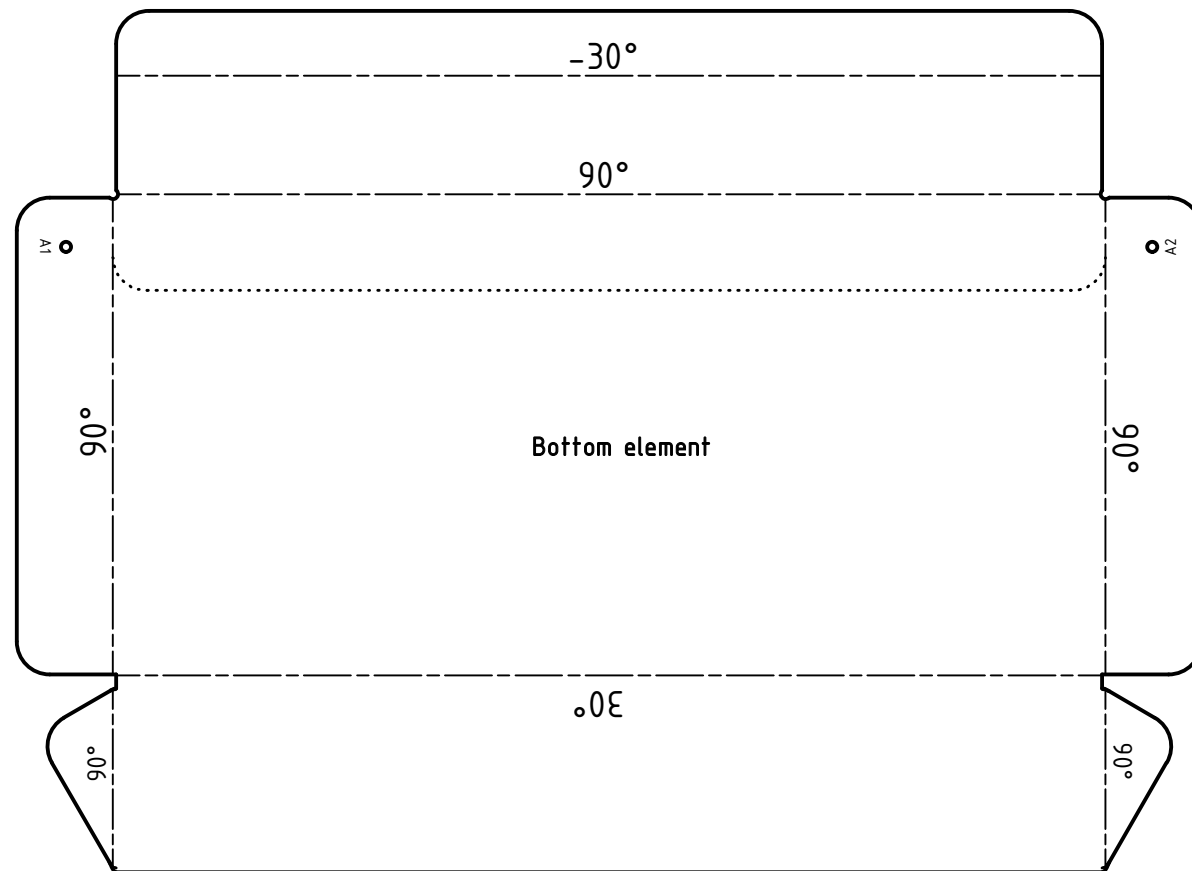
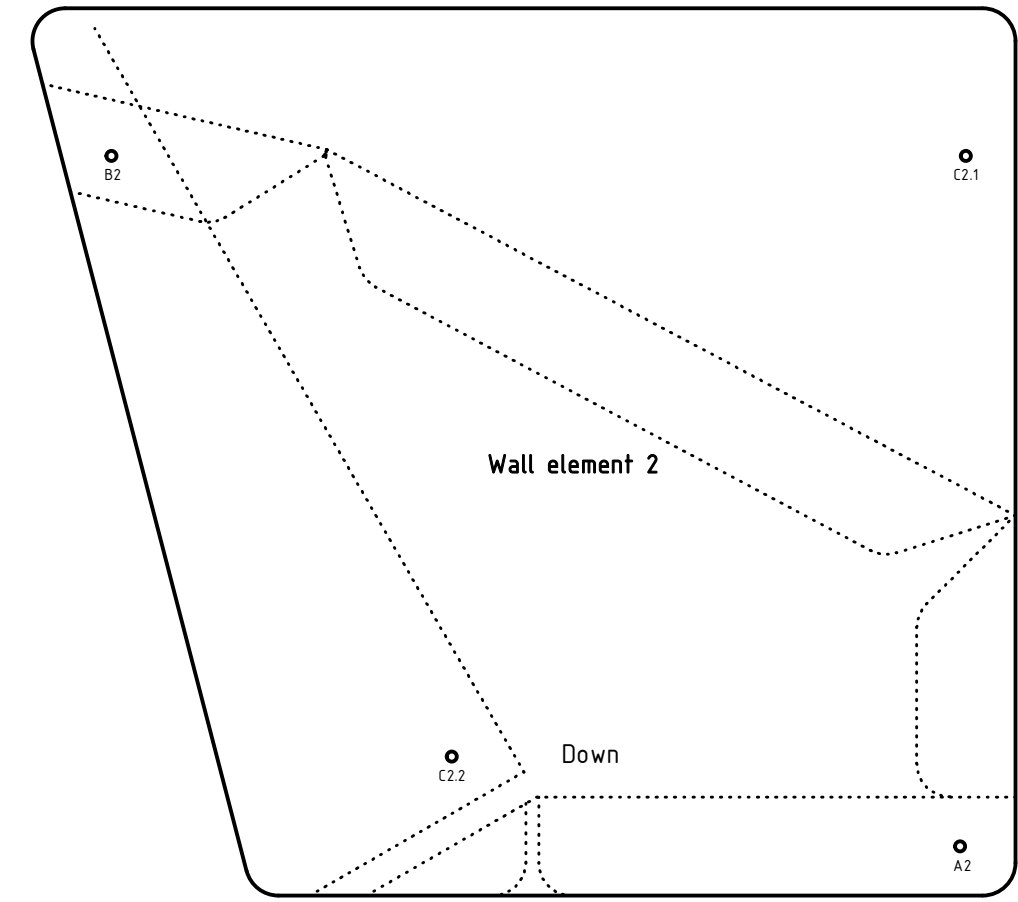
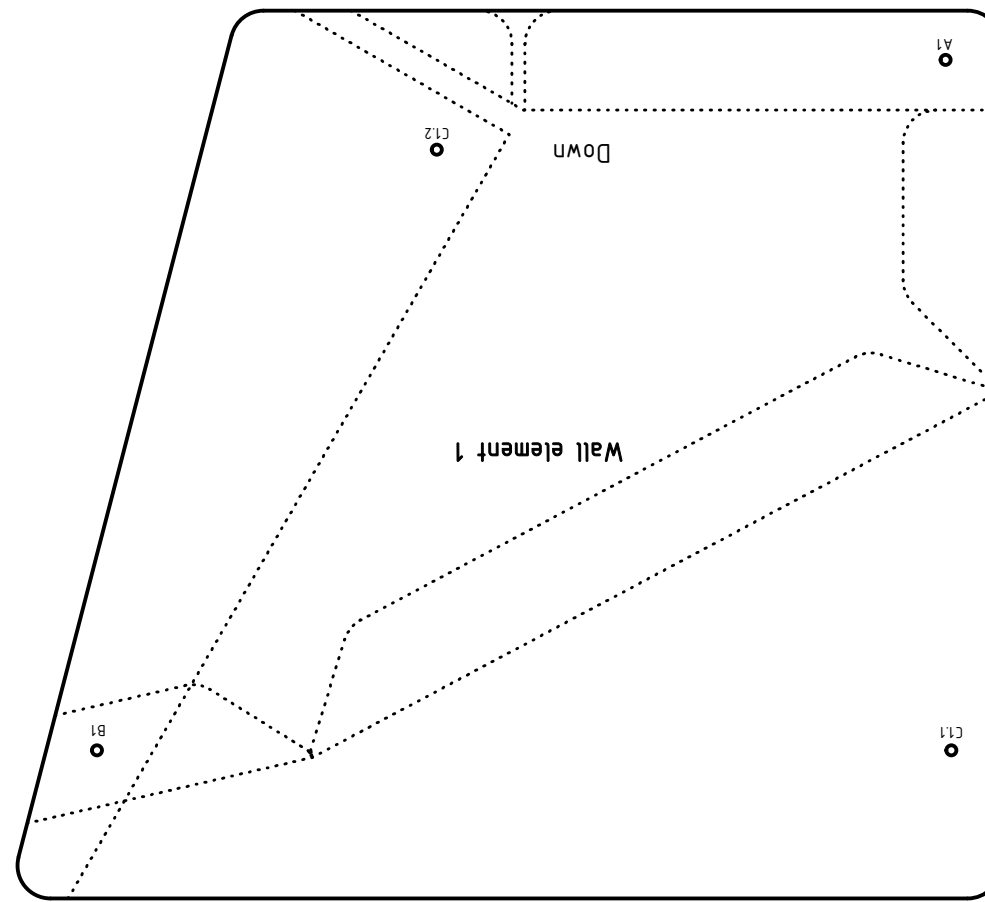
1. Cut out bottom, paddle and wall elements and side plate
 2. Fold positive angles upwards and negative angles downwards
 3. Glue wall element 2 to bottom element
 4. Glue paddle element to bottom and wall element 2 --> Important! Do not glue flap with B2 marking
 5. Glue wall element 1 to paddle and bottom elements --> Important! Do not glue flap with B1 marking
- > Module ready!
6. Glue module at B1/B2 to C1.1/C2.1 from the front module (Now glue the flaps with B1 and B2 marking)
 7. Glue module at A1/A2 to C1.2/C2.2 from the rear module
 8. Repeat for all 12 modules
 9. Glue side plates to the side of the modules (watch the symmetry)
- > Waterwheel ready!



Instructions:

- Solid line = cut out
- Intermitent line = fold
- Dotted line = auxiliary line for gluing

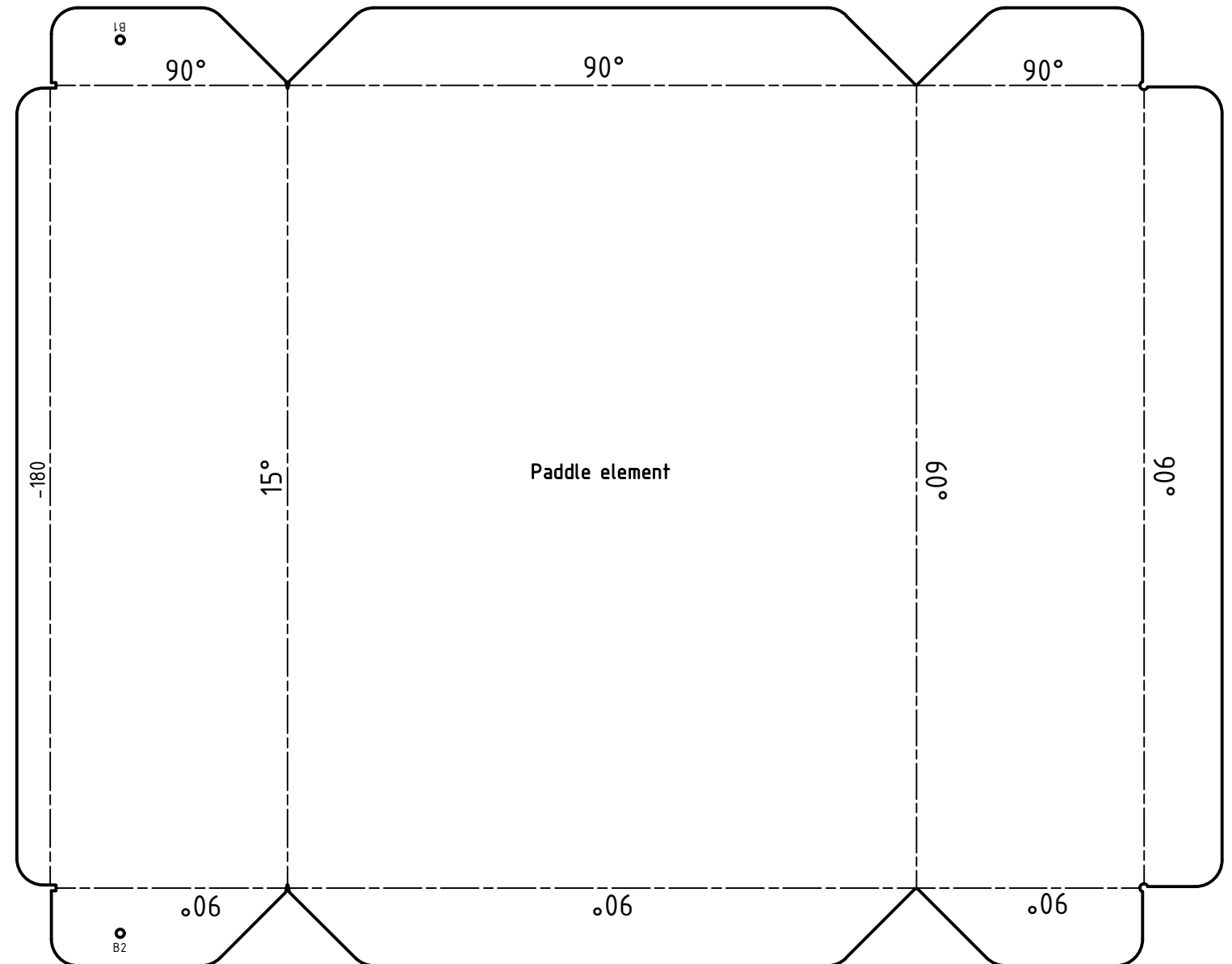
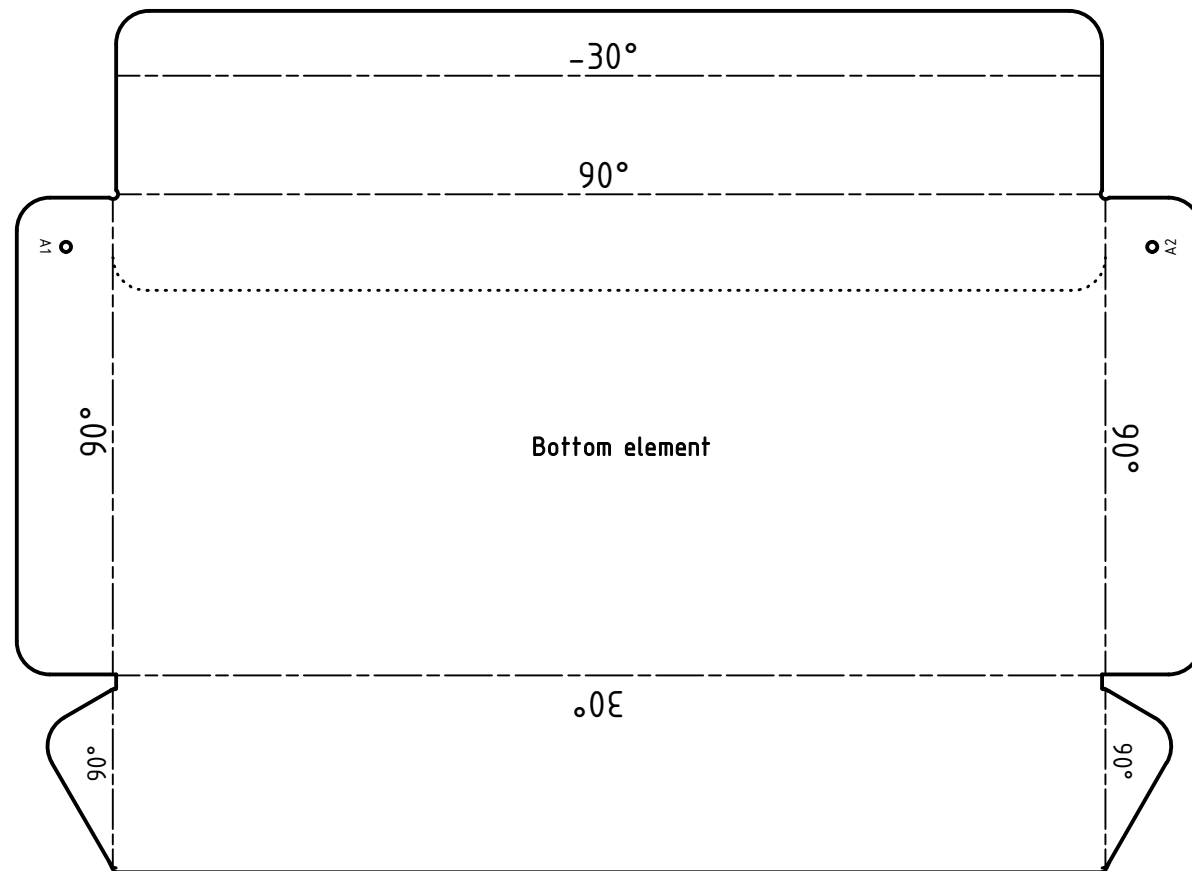
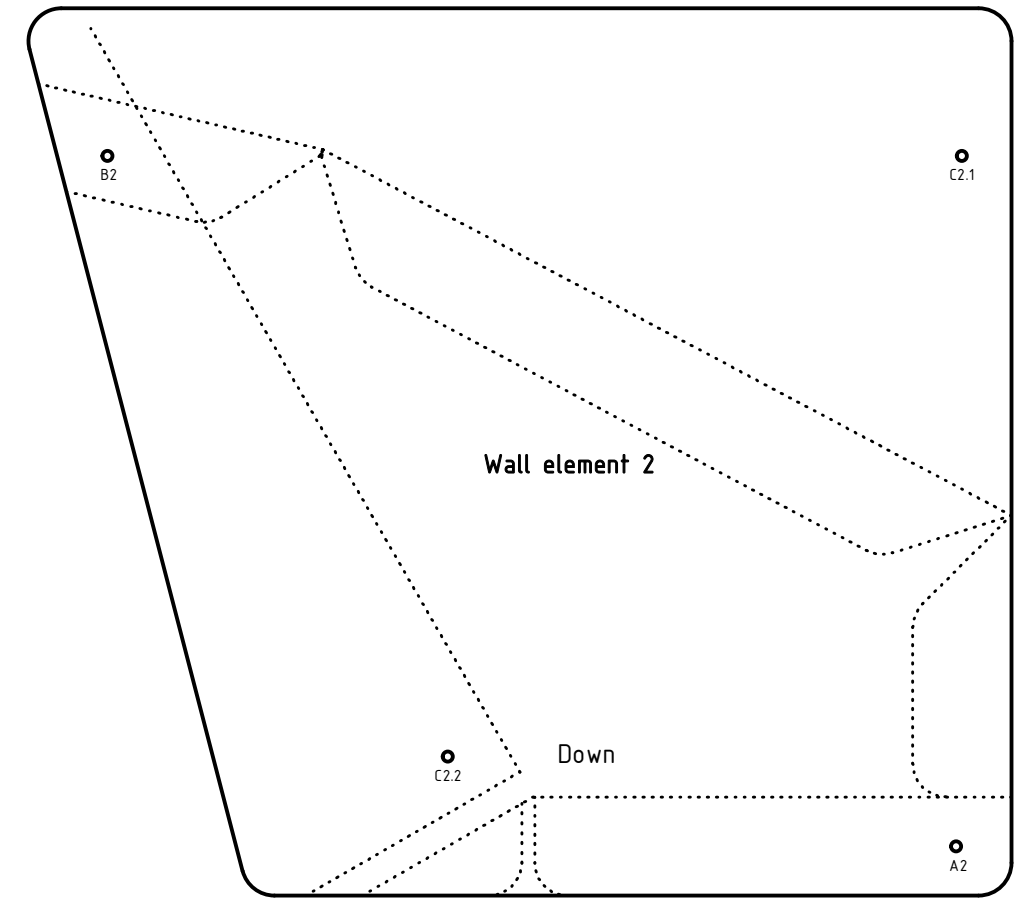
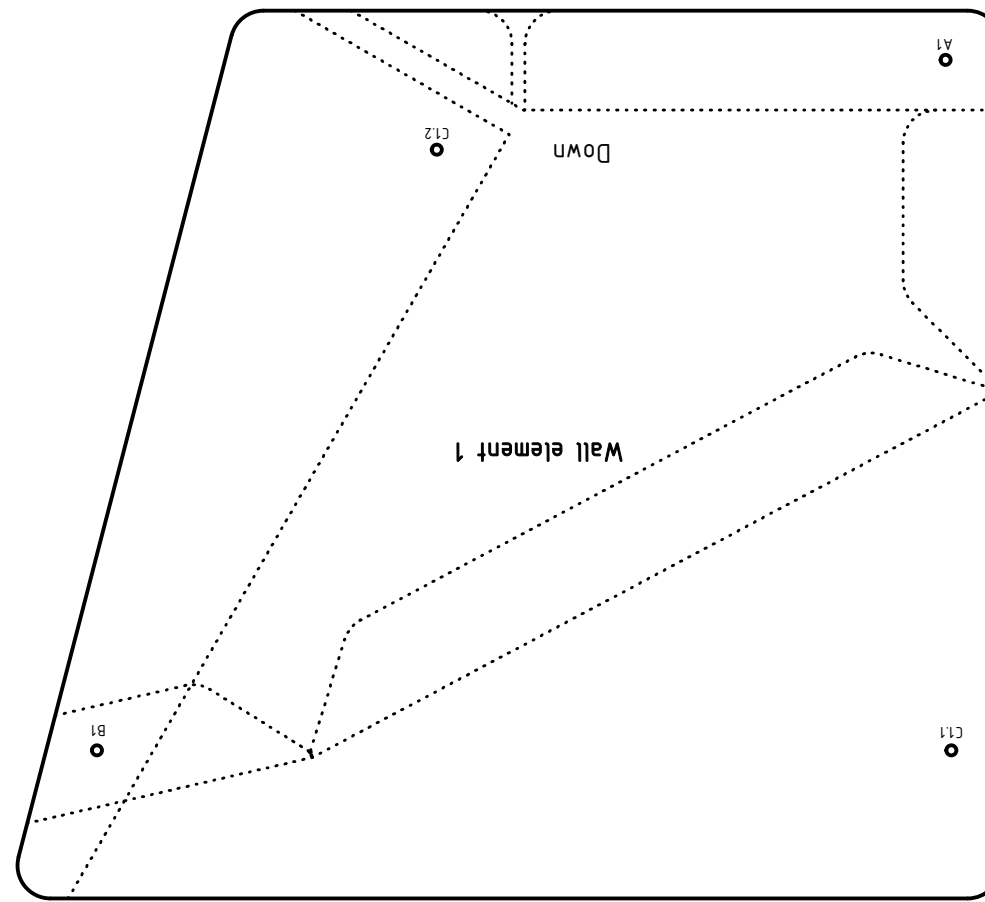
1. Cut out bottom, paddle and wall elements and side plate
 2. Fold positive angles upwards and negative angles downwards
 3. Glue wall element 2 to bottom element
 4. Glue paddle element to bottom and wall element 2 --> Important! Do not glue flap with B2 marking
 5. Glue wall element 1 to paddle and bottom elements --> Important! Do not glue flap with B1 marking
- > Module ready!
6. Glue module at B1/B2 to C1.1/C2.1 from the front module (Now glue the flaps with B1 and B2 marking)
 7. Glue module at A1/A2 to C1.2/C2.2 from the rear module
 8. Repeat for all 12 modules
 9. Glue side plates to the side of the modules (watch the symmetry)
- > Waterwheel ready!



Instructions:

- Solid line = cut out
- Intermitent line = fold
- Dotted line = auxiliary line for gluing

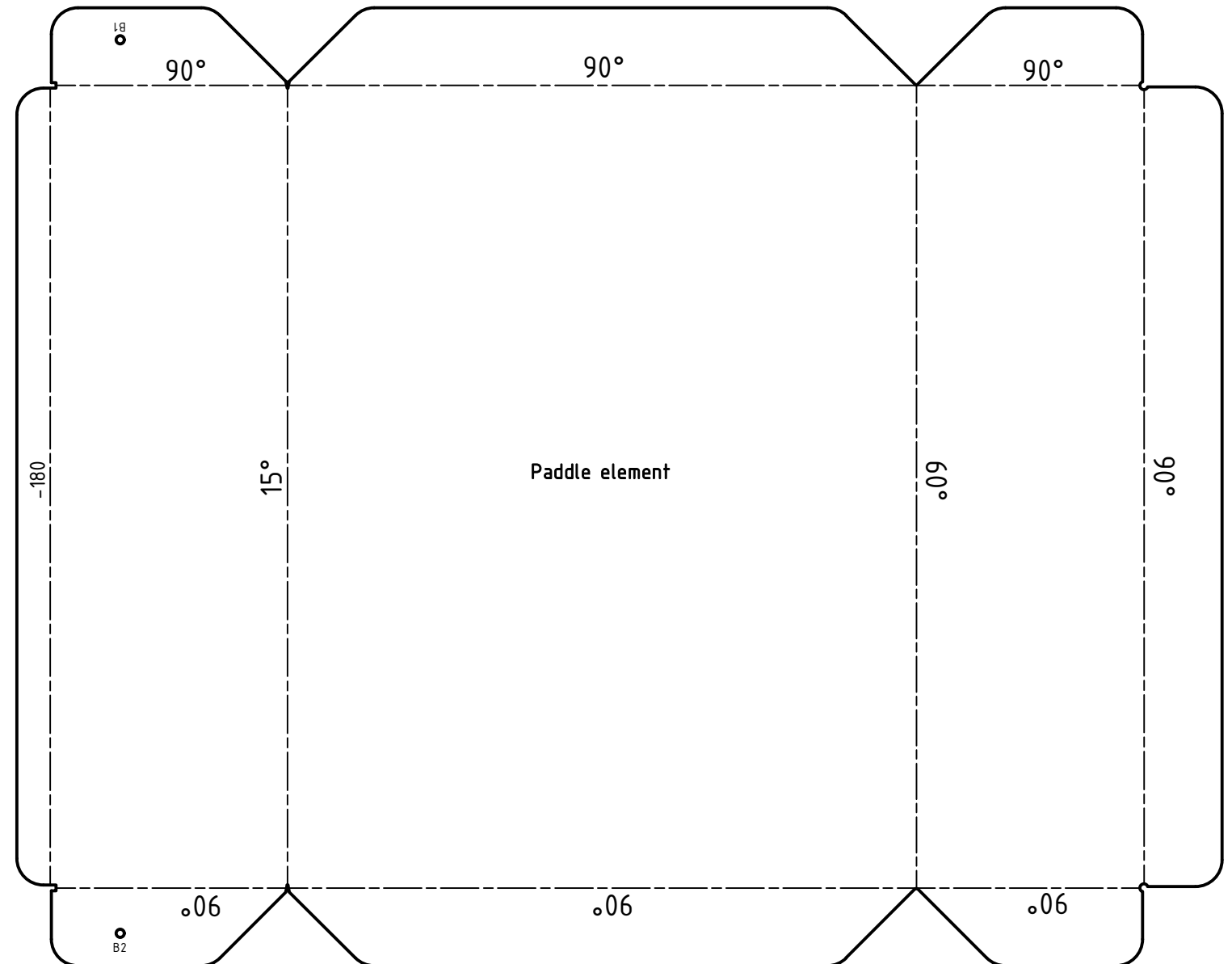
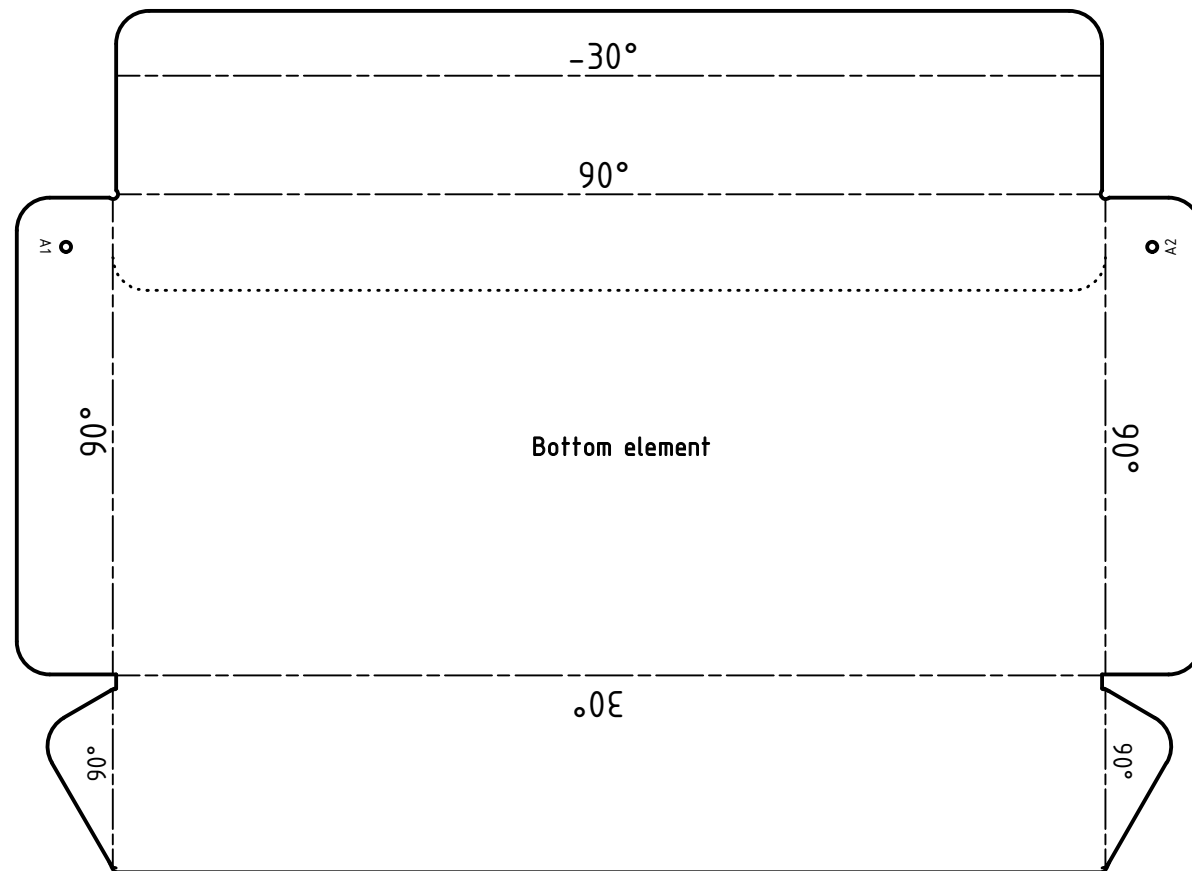
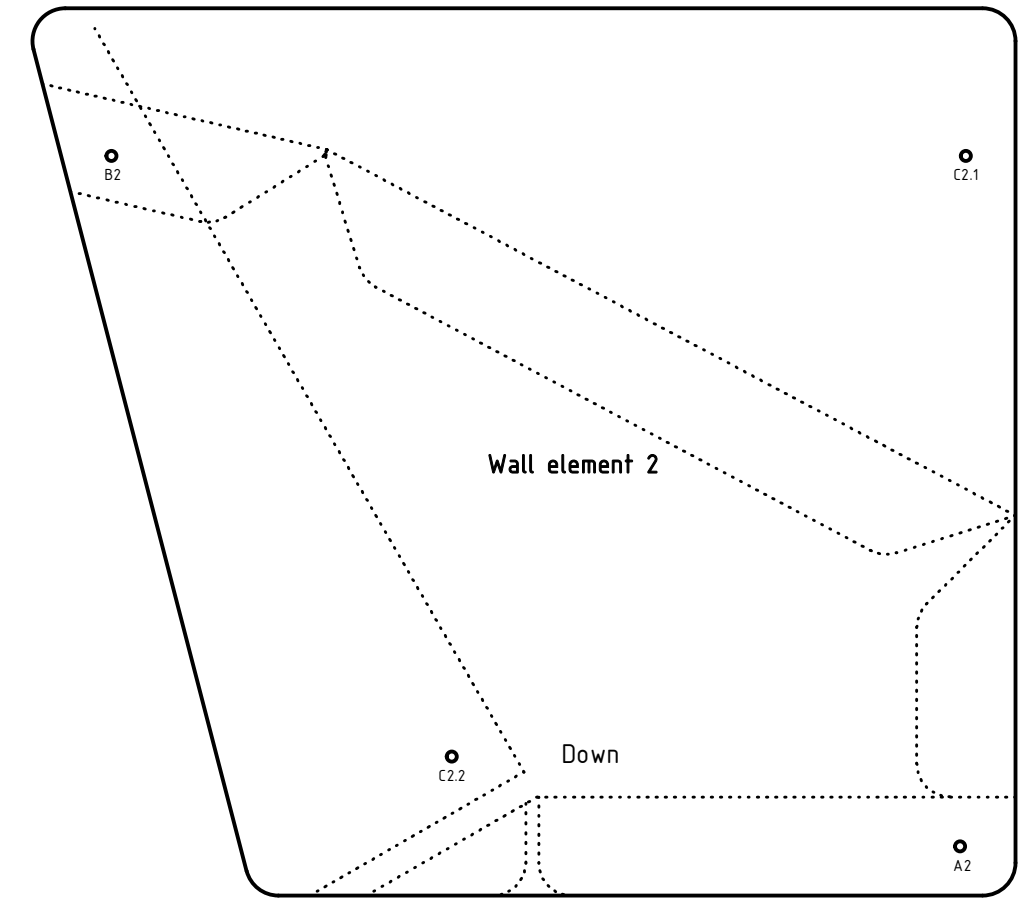
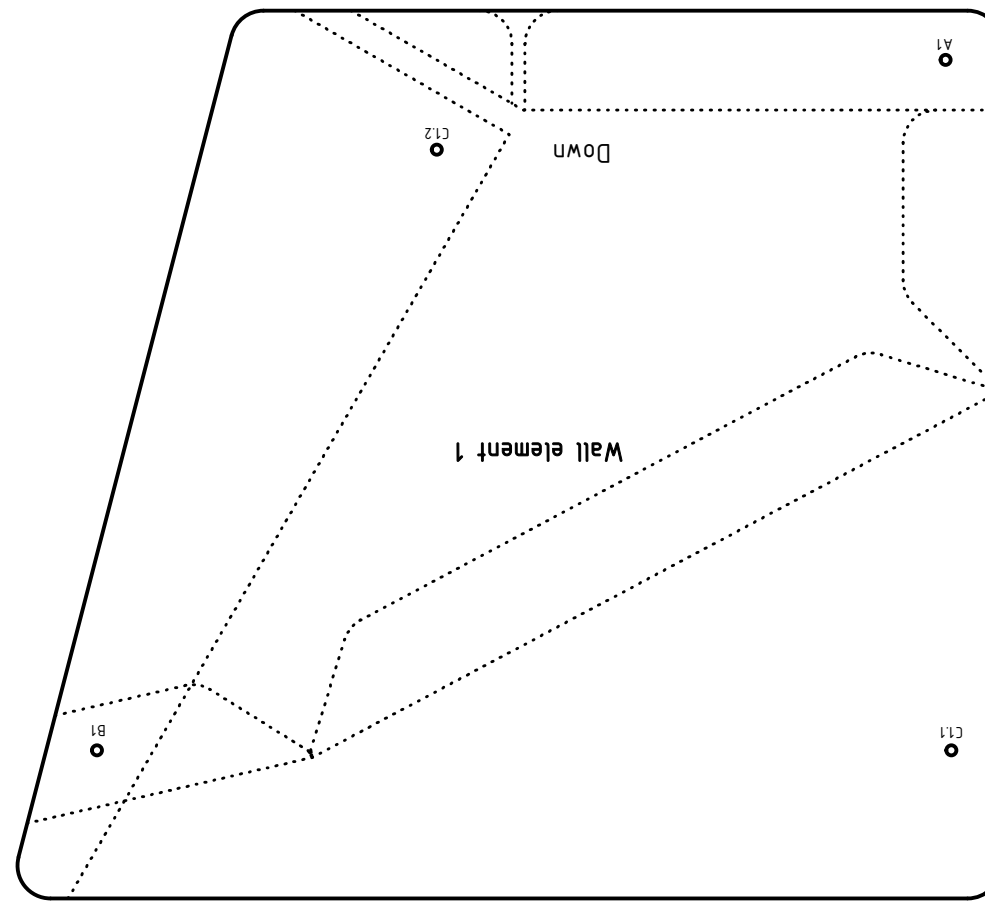
1. Cut out bottom, paddle and wall elements and side plate
 2. Fold positive angles upwards and negative angles downwards
 3. Glue wall element 2 to bottom element
 4. Glue paddle element to bottom and wall element 2 --> Important! Do not glue flap with B2 marking
 5. Glue wall element 1 to paddle and bottom elements --> Important! Do not glue flap with B1 marking
- > Module ready!
6. Glue module at B1/B2 to C1.1/C2.1 from the front module (Now glue the flaps with B1 and B2 marking)
 7. Glue module at A1/A2 to C1.2/C2.2 from the rear module
 8. Repeat for all 12 modules
 9. Glue side plates to the side of the modules (watch the symmetry)
- > Waterwheel ready!



Instructions:

- Solid line = cut out
- Intermitent line = fold
- Dotted line = auxiliary line for gluing

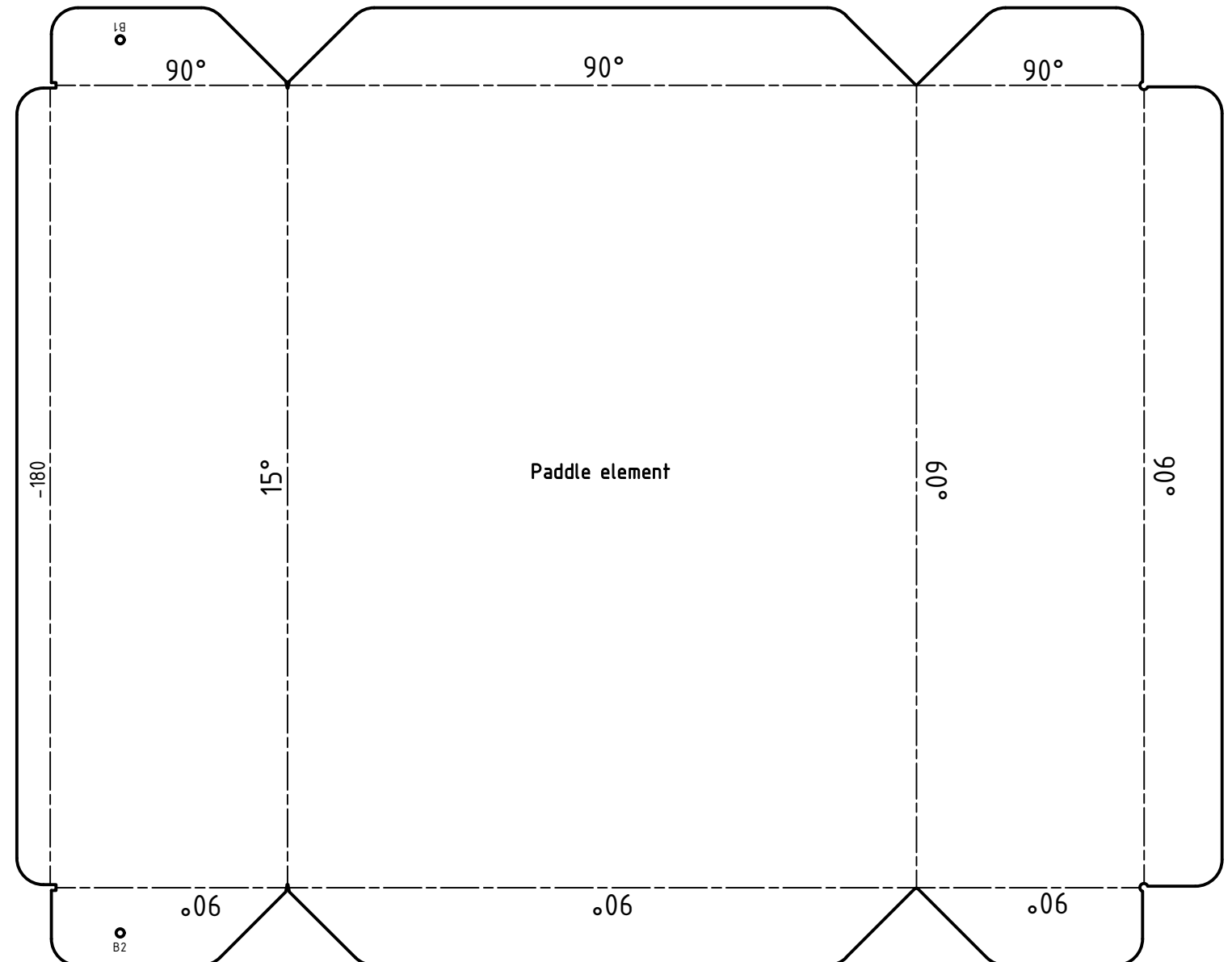
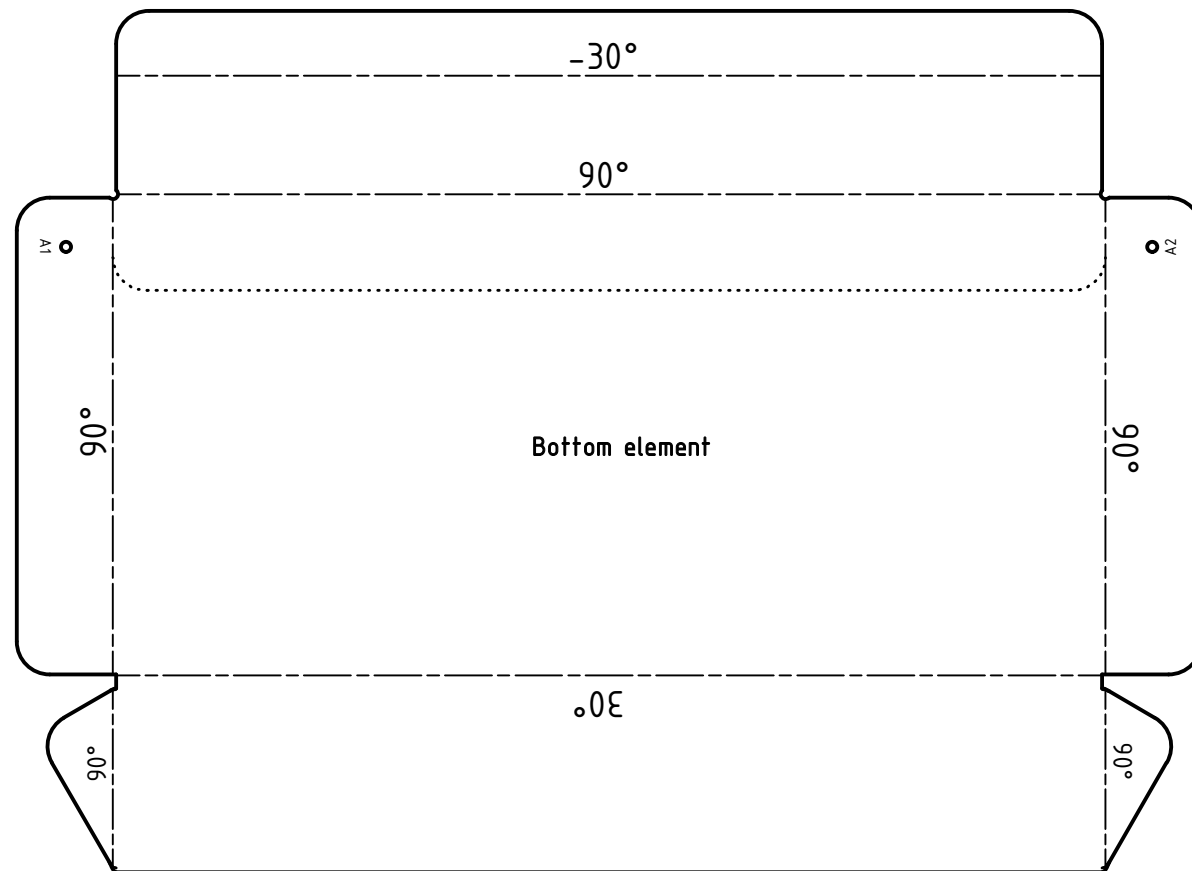
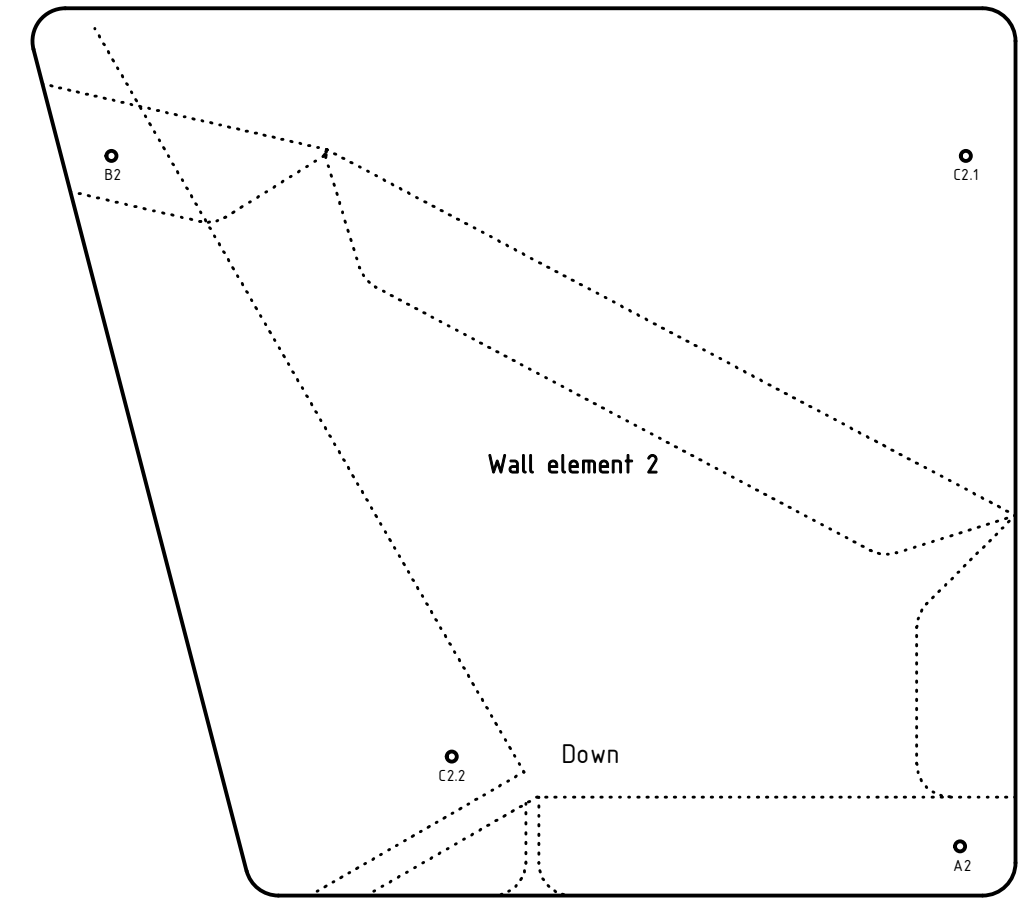
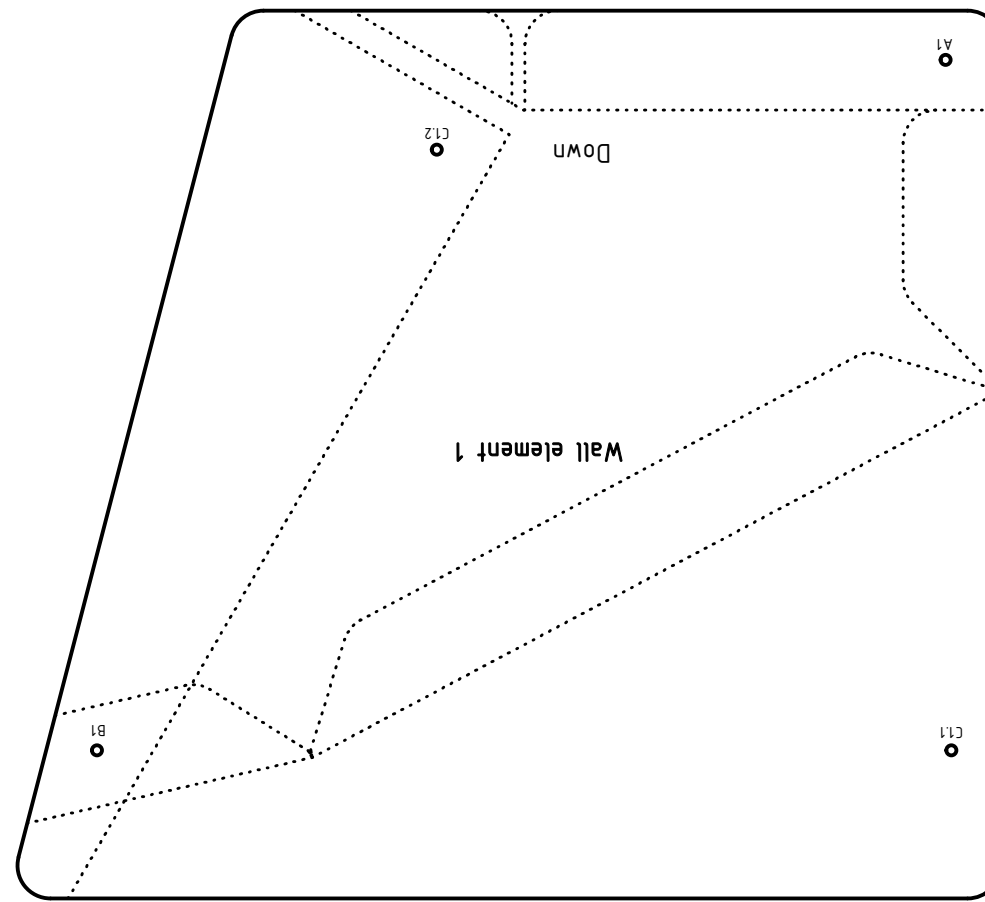
1. Cut out bottom, paddle and wall elements and side plate
 2. Fold positive angles upwards and negative angles downwards
 3. Glue wall element 2 to bottom element
 4. Glue paddle element to bottom and wall element 2 --> Important! Do not glue flap with B2 marking
 5. Glue wall element 1 to paddle and bottom elements --> Important! Do not glue flap with B1 marking
- > Module ready!
6. Glue module at B1/B2 to C1.1/C2.1 from the front module (Now glue the flaps with B1 and B2 marking)
 7. Glue module at A1/A2 to C1.2/C2.2 from the rear module
 8. Repeat for all 12 modules
 9. Glue side plates to the side of the modules (watch the symmetry)
- > Waterwheel ready!



Instructions:

- Solid line = cut out
- Intermitent line = fold
- Dotted line = auxiliary line for gluing

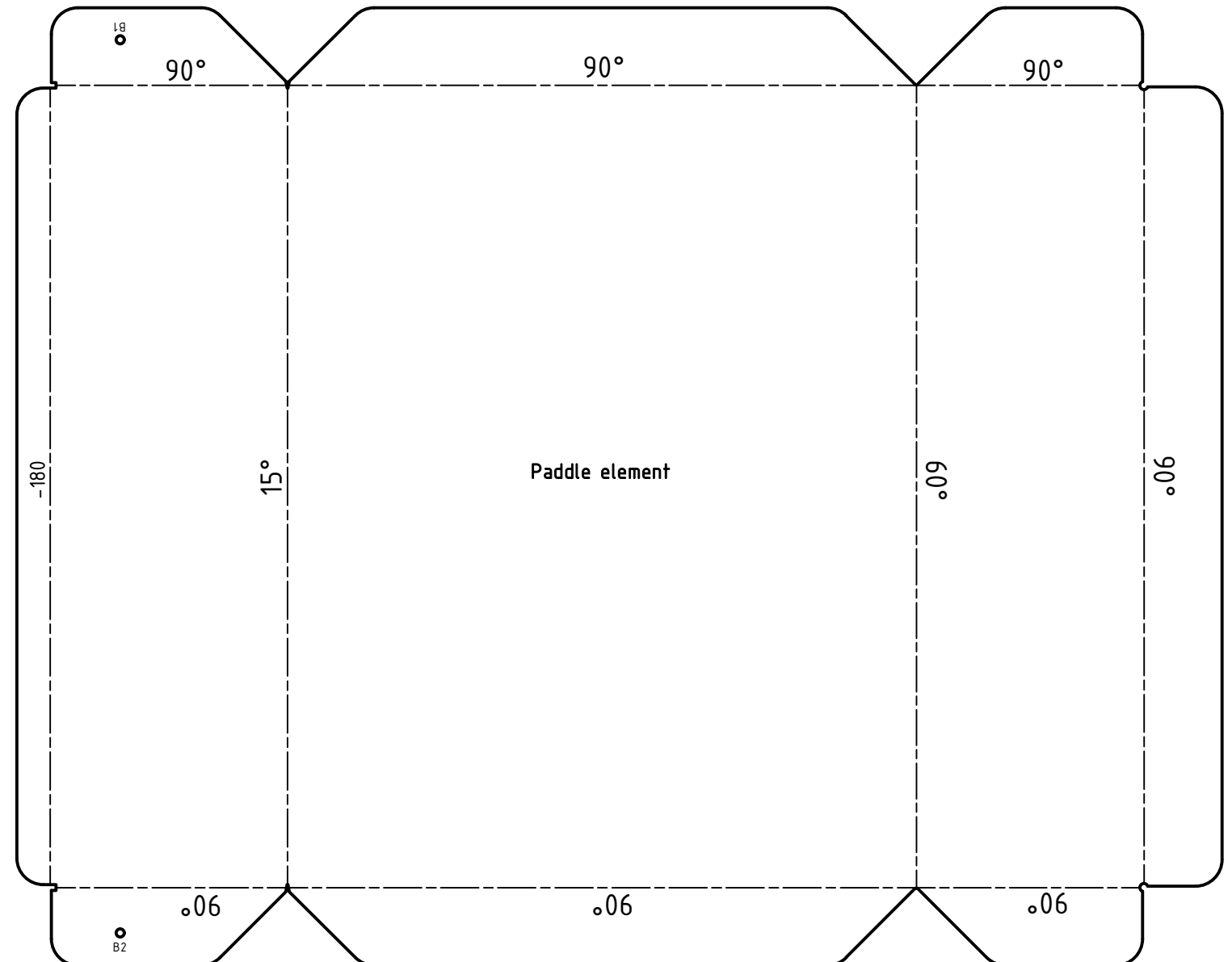
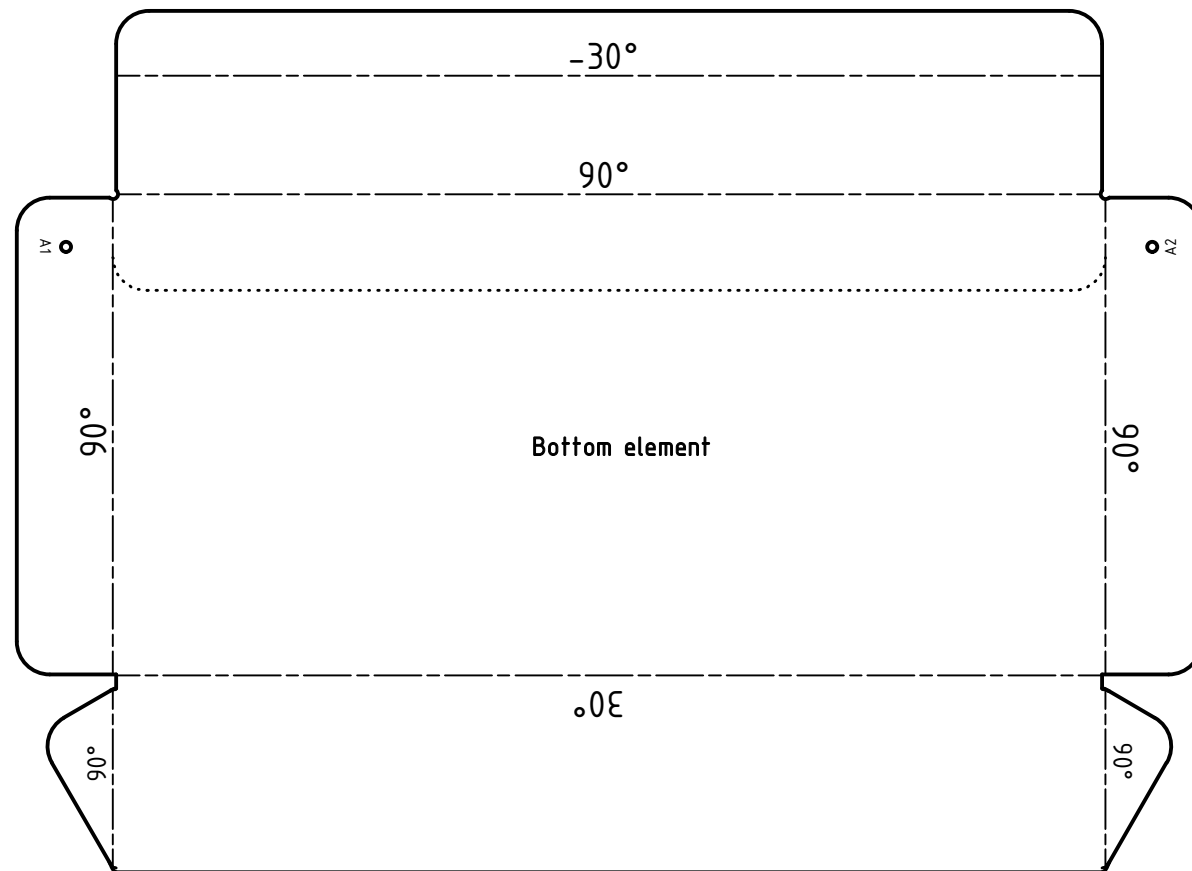
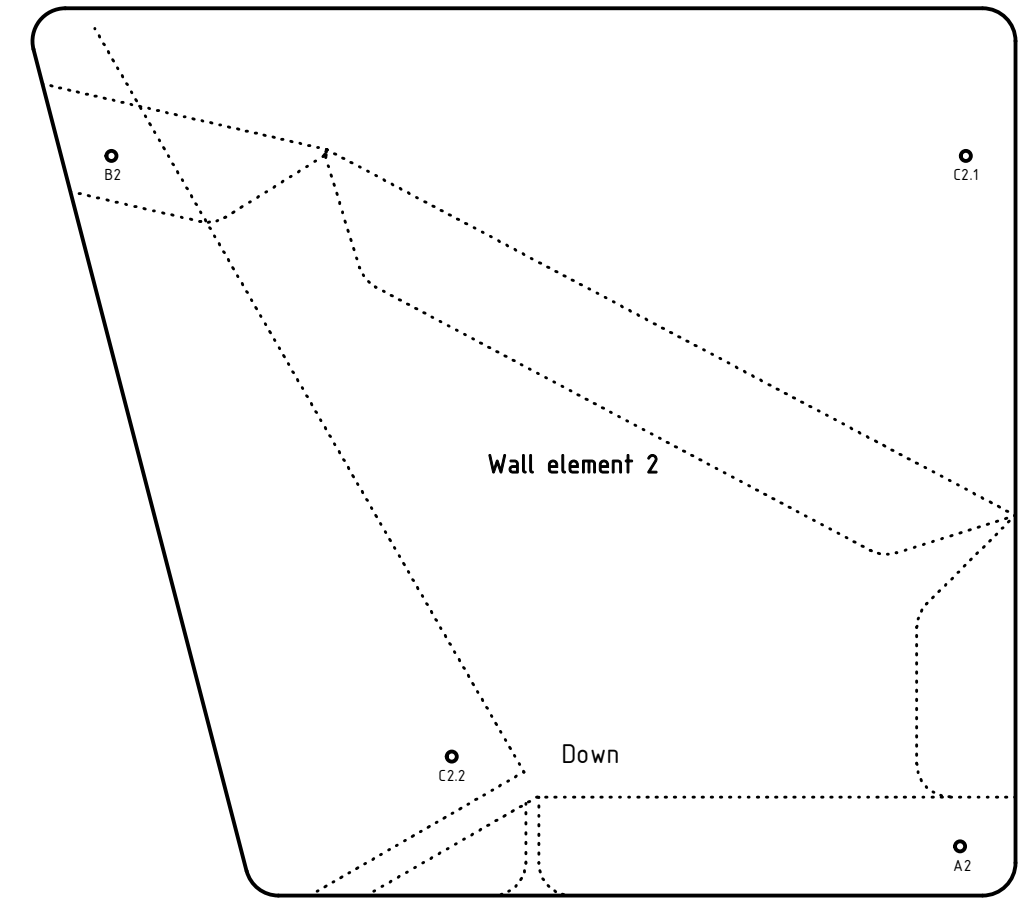
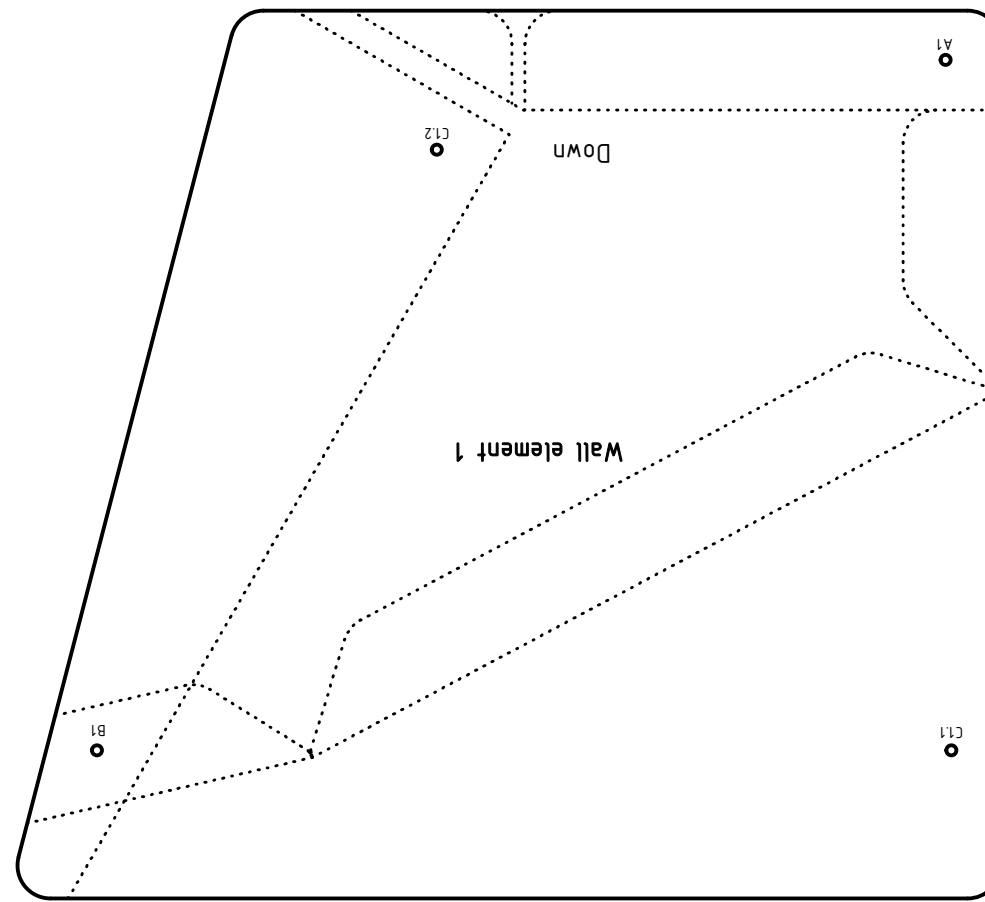
1. Cut out bottom, paddle and wall elements and side plate
 2. Fold positive angles upwards and negative angles downwards
 3. Glue wall element 2 to bottom element
 4. Glue paddle element to bottom and wall element 2 --> Important! Do not glue flap with B2 marking
 5. Glue wall element 1 to paddle and bottom elements --> Important! Do not glue flap with B1 marking
- > Module ready!
6. Glue module at B1/B2 to C1.1/C2.1 from the front module (Now glue the flaps with B1 and B2 marking)
 7. Glue module at A1/A2 to C1.2/C2.2 from the rear module
 8. Repeat for all 12 modules
 9. Glue side plates to the side of the modules (watch the symmetry)
- > Waterwheel ready!



Instructions:

- Solid line = cut out
- Intermitent line = fold
- Dotted line = auxiliary line for gluing

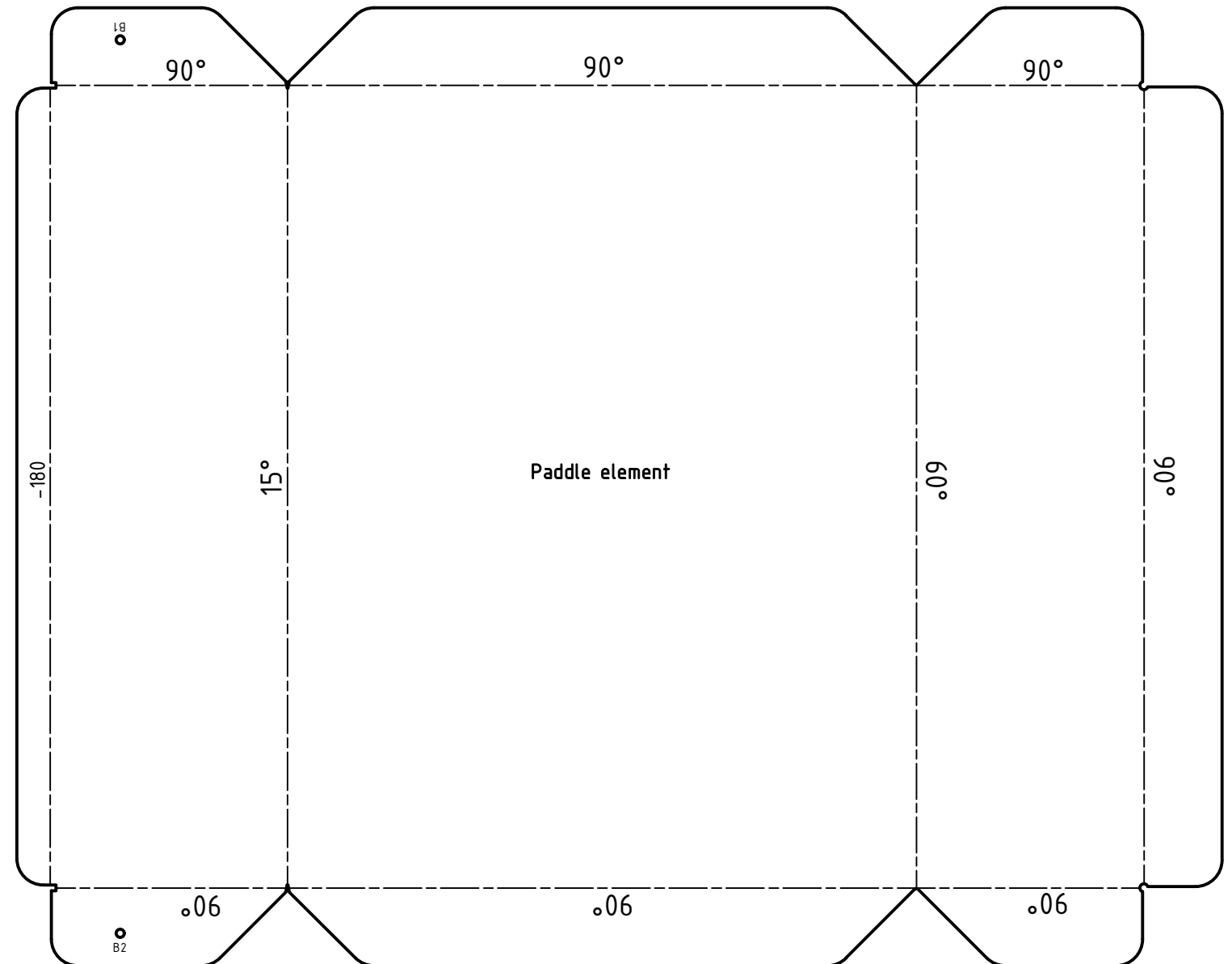
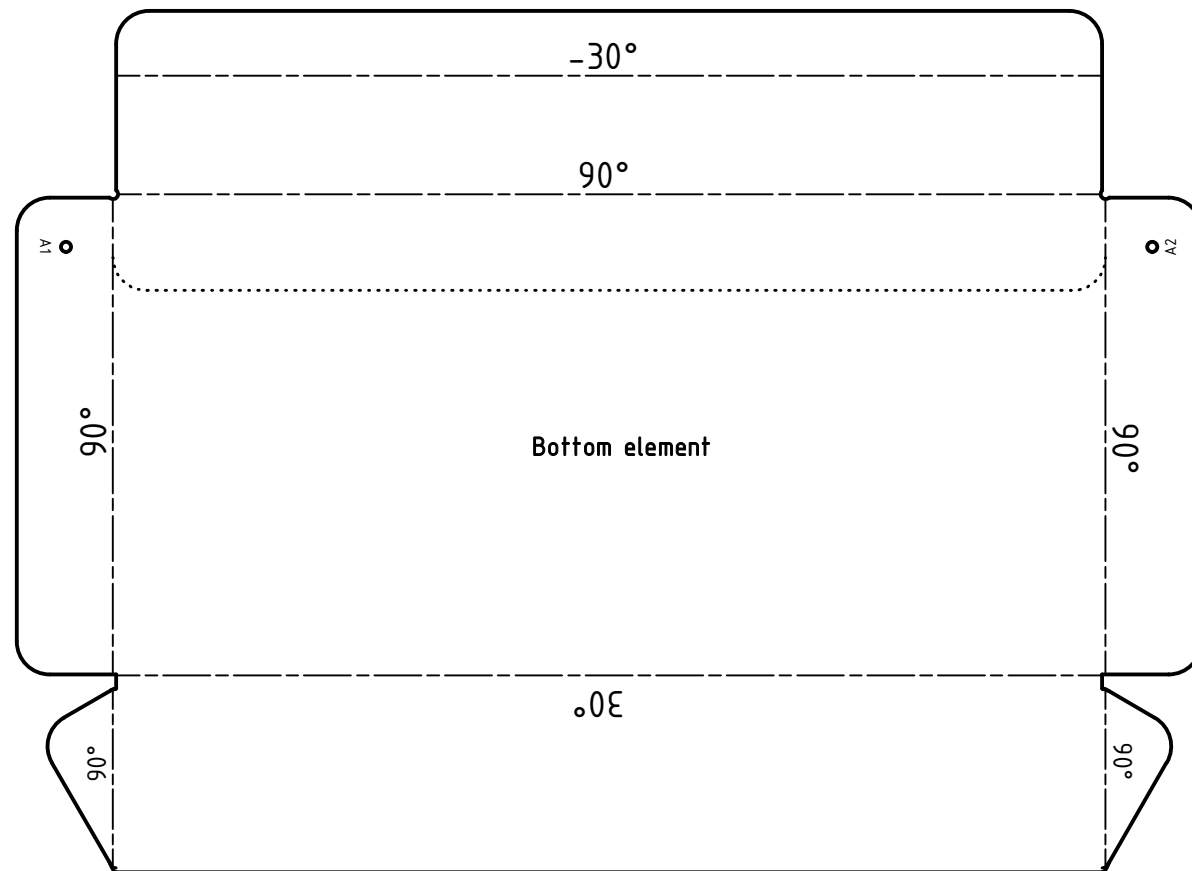
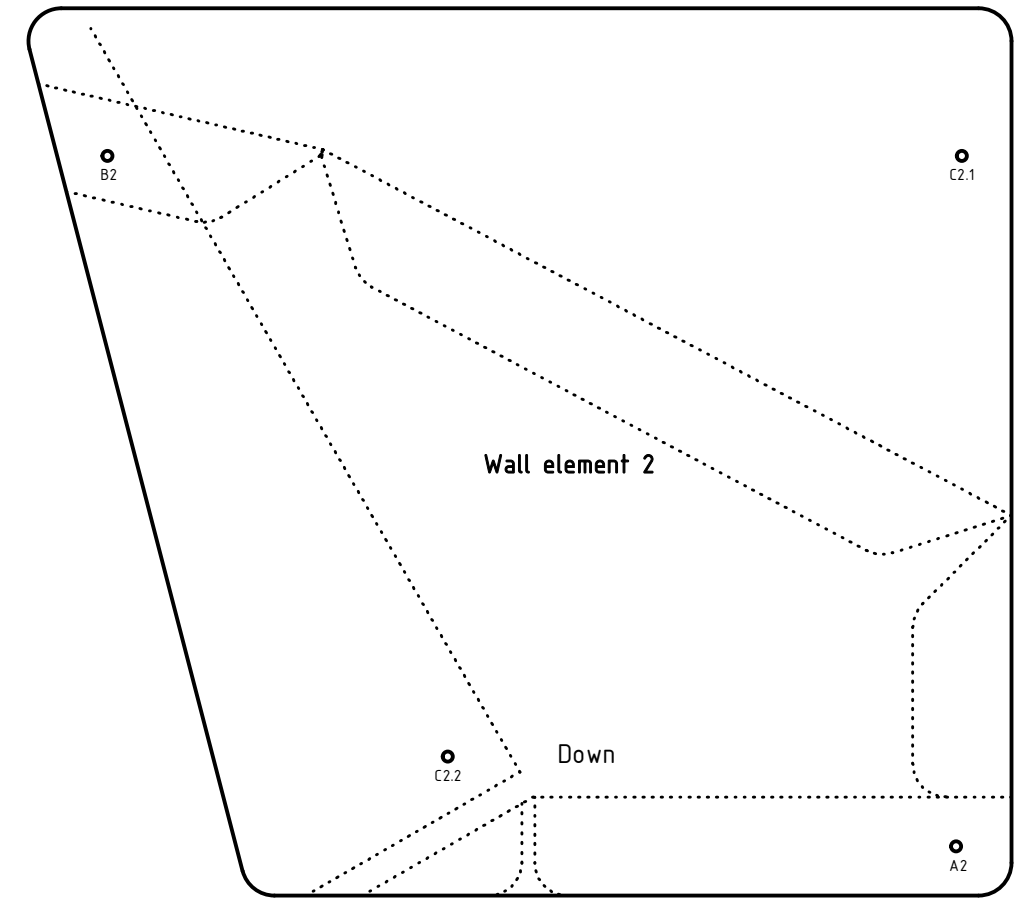
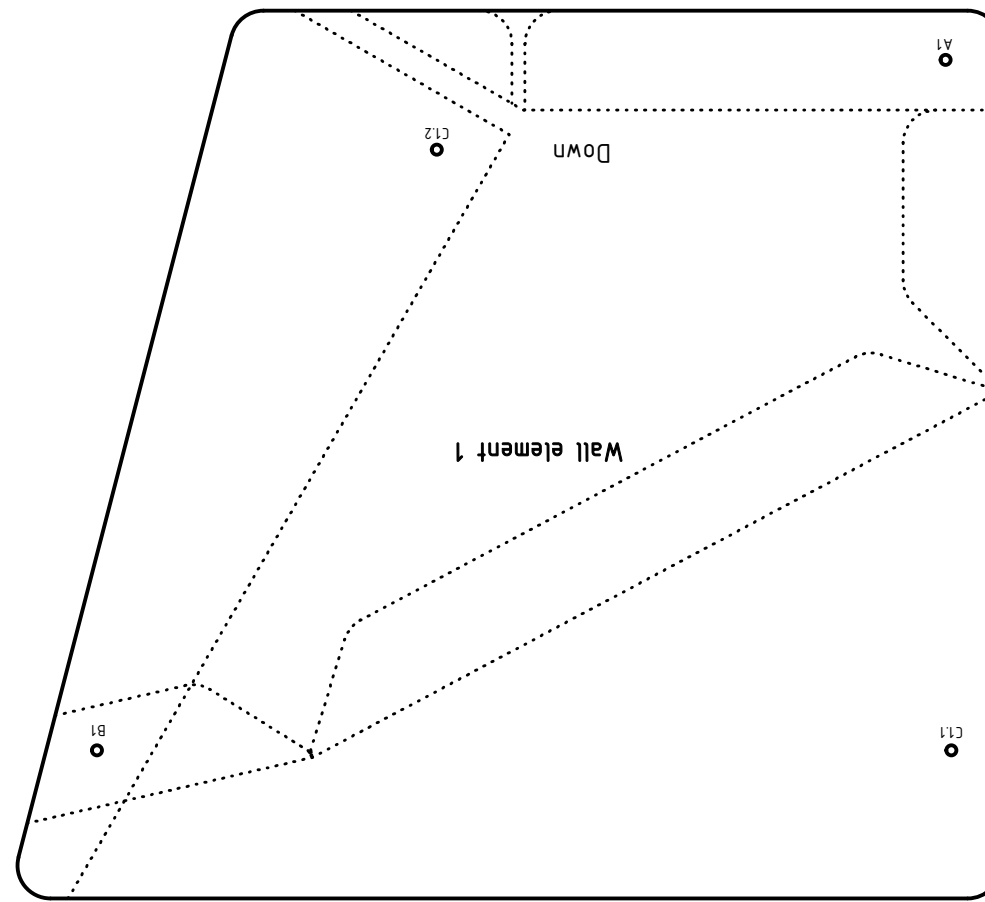
1. Cut out bottom, paddle and wall elements and side plate
 2. Fold positive angles upwards and negative angles downwards
 3. Glue wall element 2 to bottom element
 4. Glue paddle element to bottom and wall element 2 --> Important! Do not glue flap with B2 marking
 5. Glue wall element 1 to paddle and bottom elements --> Important! Do not glue flap with B1 marking
- > Module ready!
6. Glue module at B1/B2 to C1.1/C2.1 from the front module (Now glue the flaps with B1 and B2 marking)
 7. Glue module at A1/A2 to C1.2/C2.2 from the rear module
 8. Repeat for all 12 modules
 9. Glue side plates to the side of the modules (watch the symmetry)
- > Waterwheel ready!



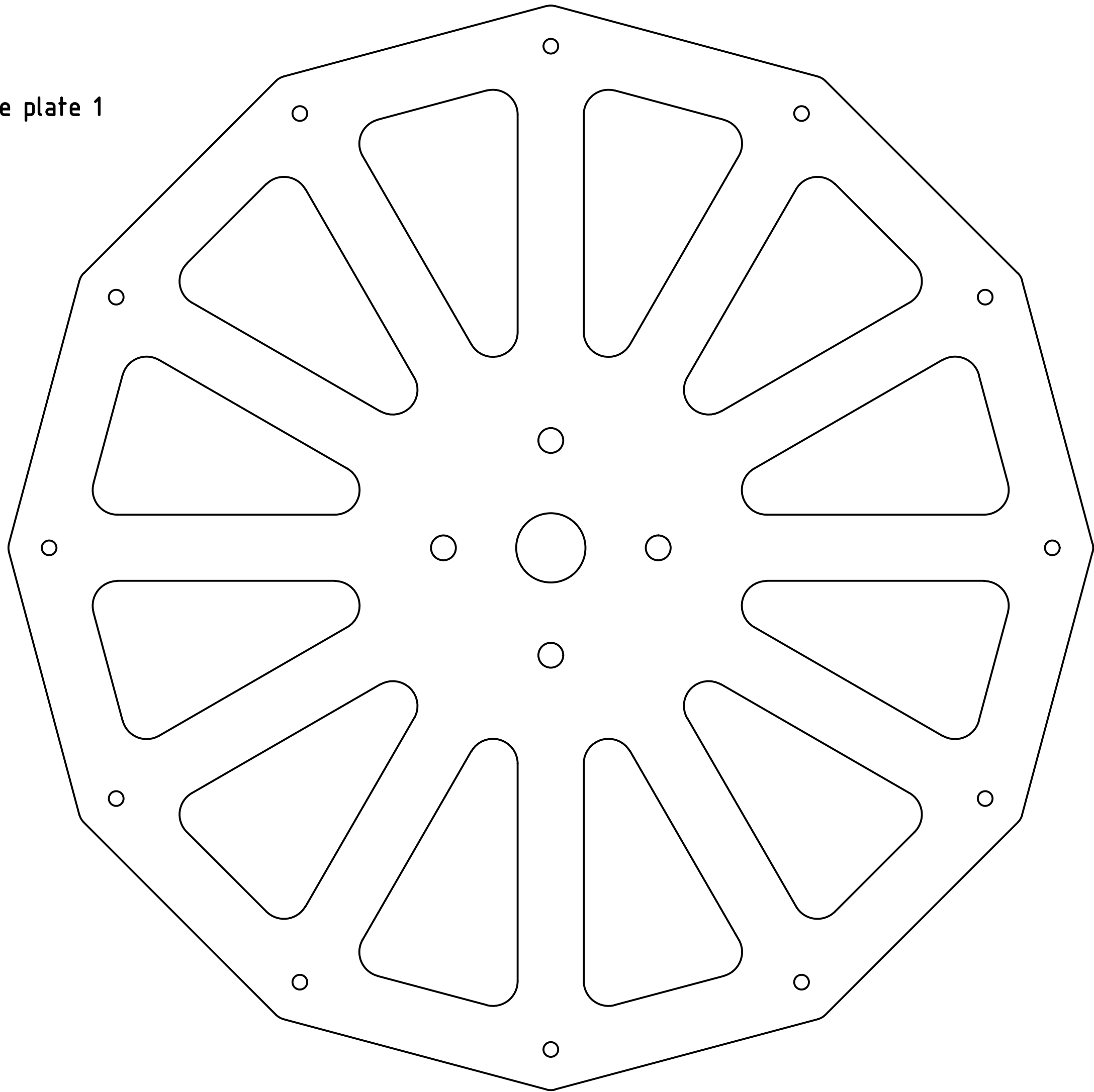
Instructions:

- Solid line = cut out
- Intermitent line = fold
- Dotted line = auxiliary line for gluing

1. Cut out bottom, paddle and wall elements and side plate
 2. Fold positive angles upwards and negative angles downwards
 3. Glue wall element 2 to bottom element
 4. Glue paddle element to bottom and wall element 2 --> Important! Do not glue flap with B2 marking
 5. Glue wall element 1 to paddle and bottom elements --> Important! Do not glue flap with B1 marking
- > Module ready!
6. Glue module at B1/B2 to C1.1/C2.1 from the front module (Now glue the flaps with B1 and B2 marking)
 7. Glue module at A1/A2 to C1.2/C2.2 from the rear module
 8. Repeat for all 12 modules
 9. Glue side plates to the side of the modules (watch the symmetry)
- > Waterwheel ready!



Side plate 1



Side plate 2

