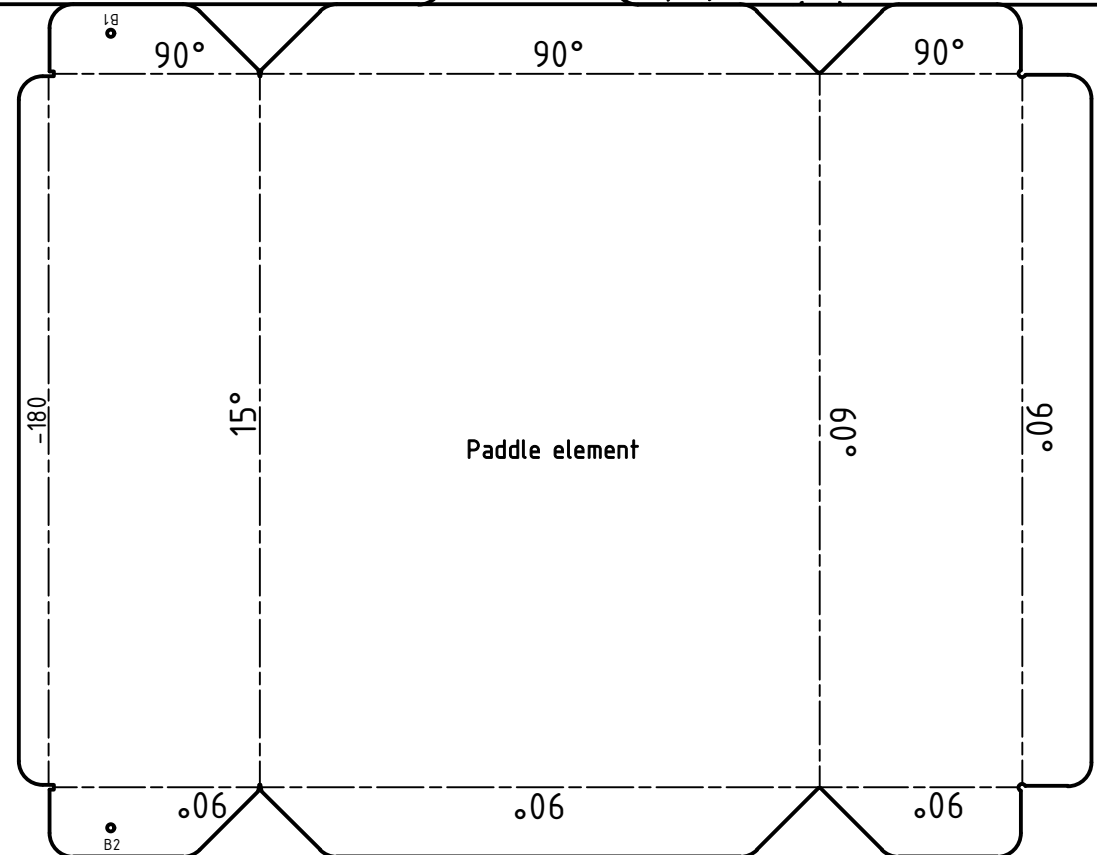
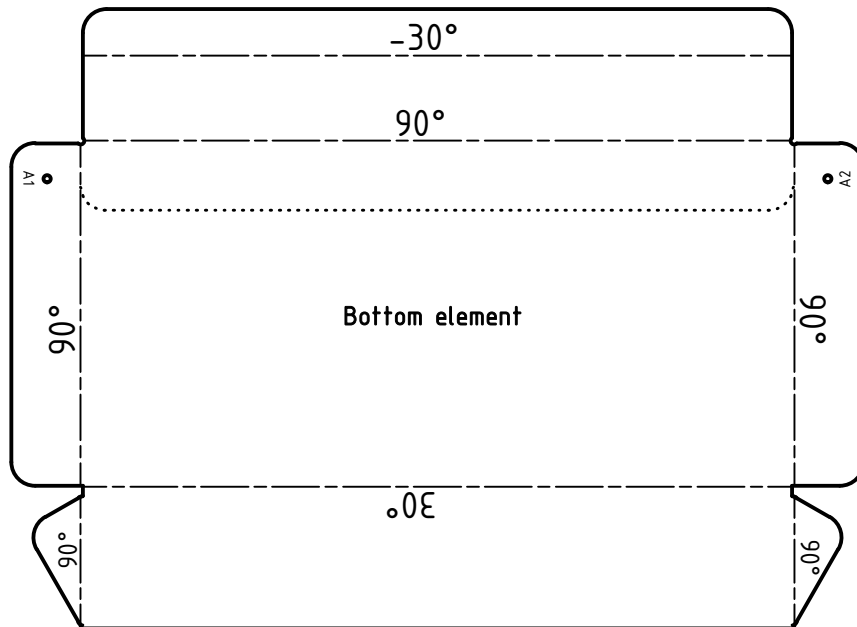
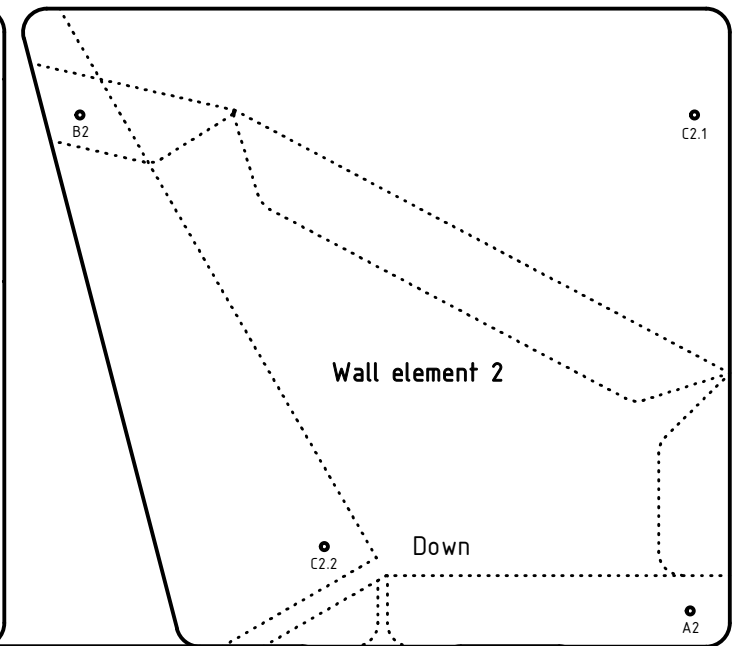
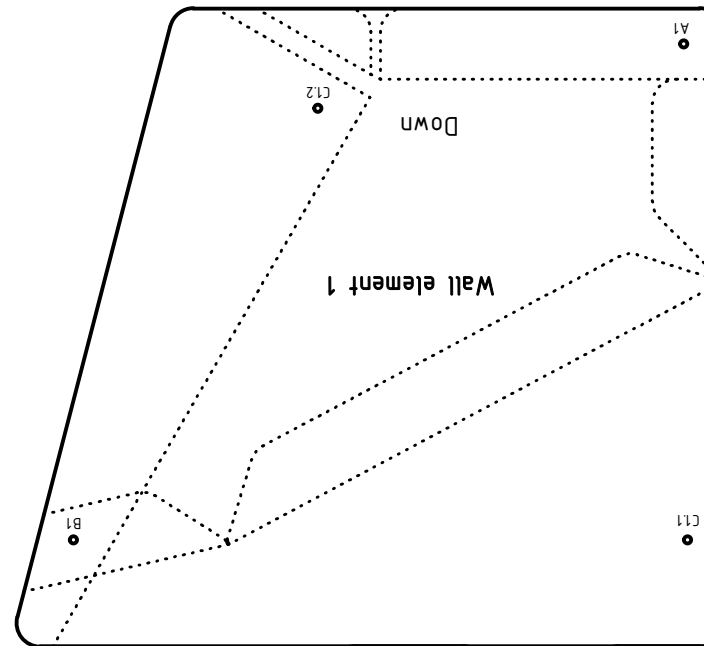


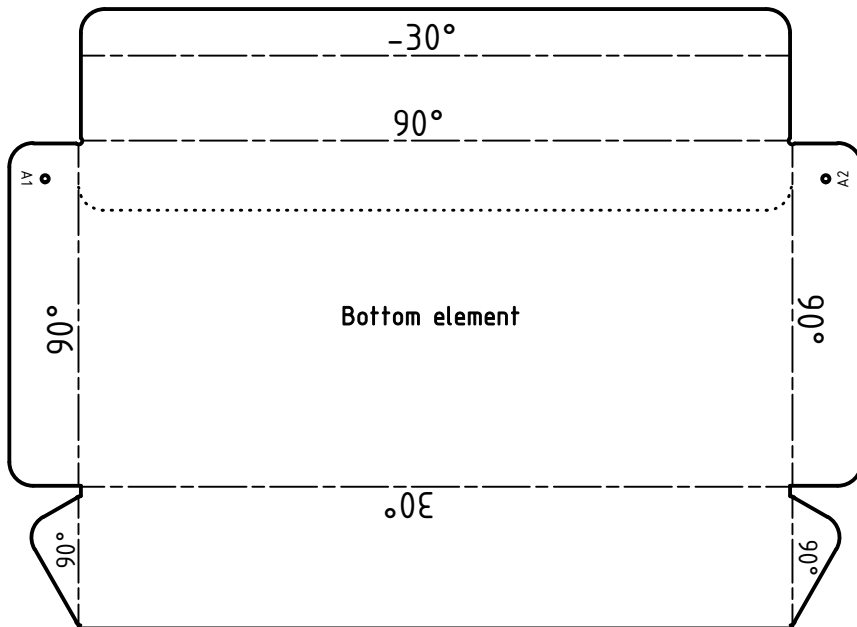
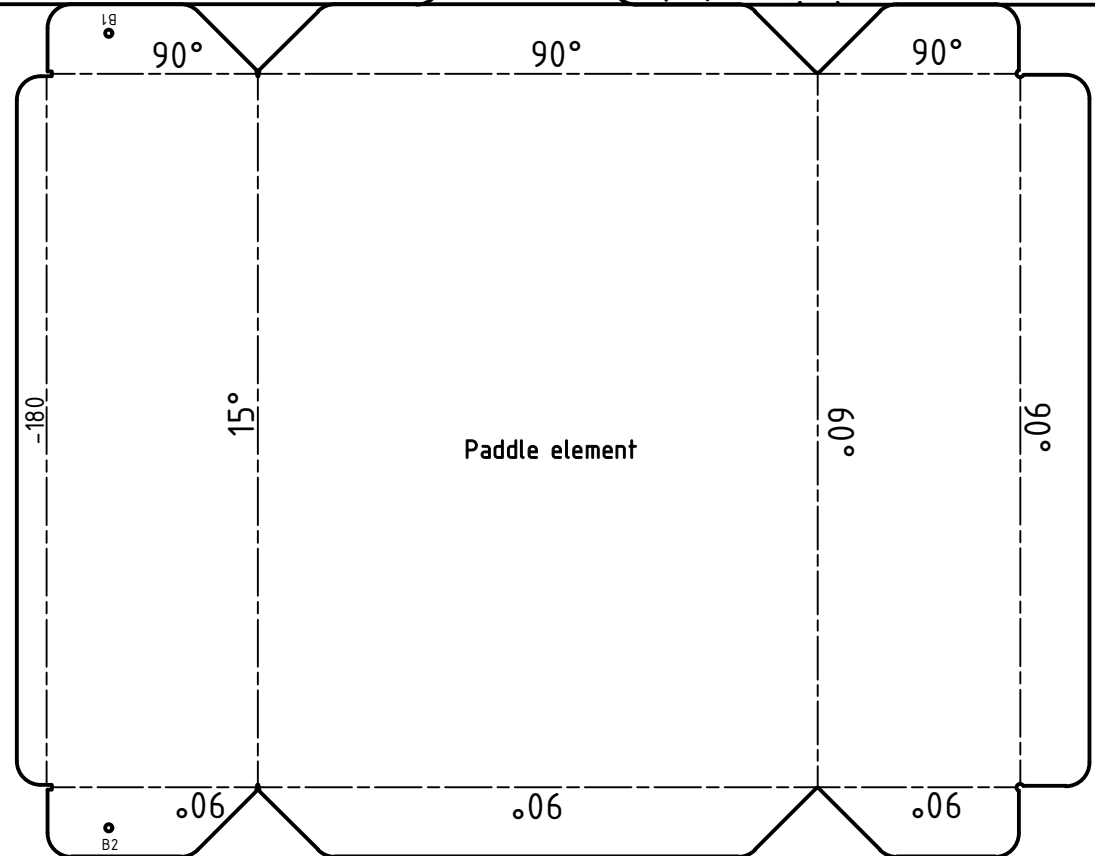
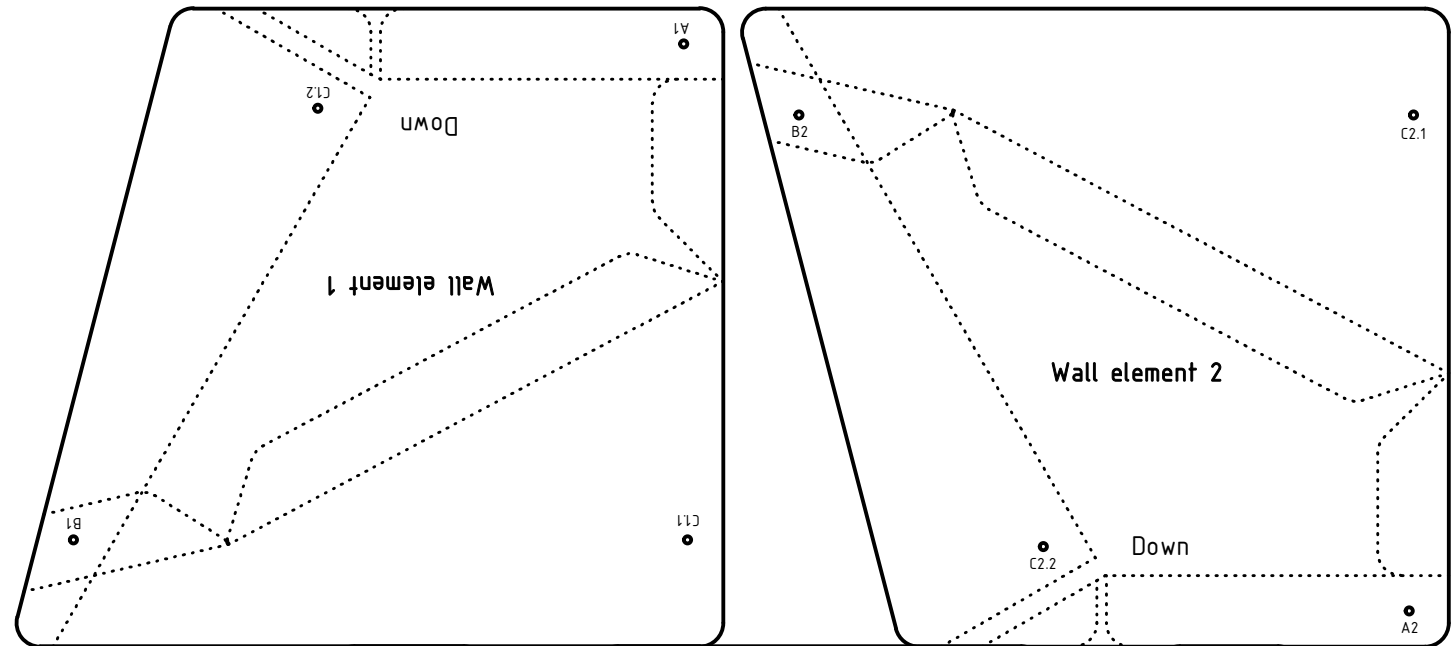
## Instructions:

- Solid line = cut out
  - Intermittent line = fold
  - Dotted line = auxiliary line for gluing
1. Cut out bottom, paddle and wall elements and side plate
  2. Fold positive angles upwards and negative angles downwards
  3. Glue wall element 2 to bottom element
  4. Glue paddle element to bottom and wall element 2  
--> Important! Do not glue flap with B2 marking
  5. Glue wall element 1 to paddle and bottom elements  
--> Important! Do not glue flap with B1 marking
- > Module ready!
6. Glue module at B1/B2 to C1.1/C2.1 from the front module (Now glue the flaps with B1 and B2 marking)
  7. Glue module at A1/A2 to C1.2/C2.2 from the rear module
8. Repeat for all 12 modules
  9. Glue side plates to the side of the modules (watch the symmetry)
- > Waterwheel ready!



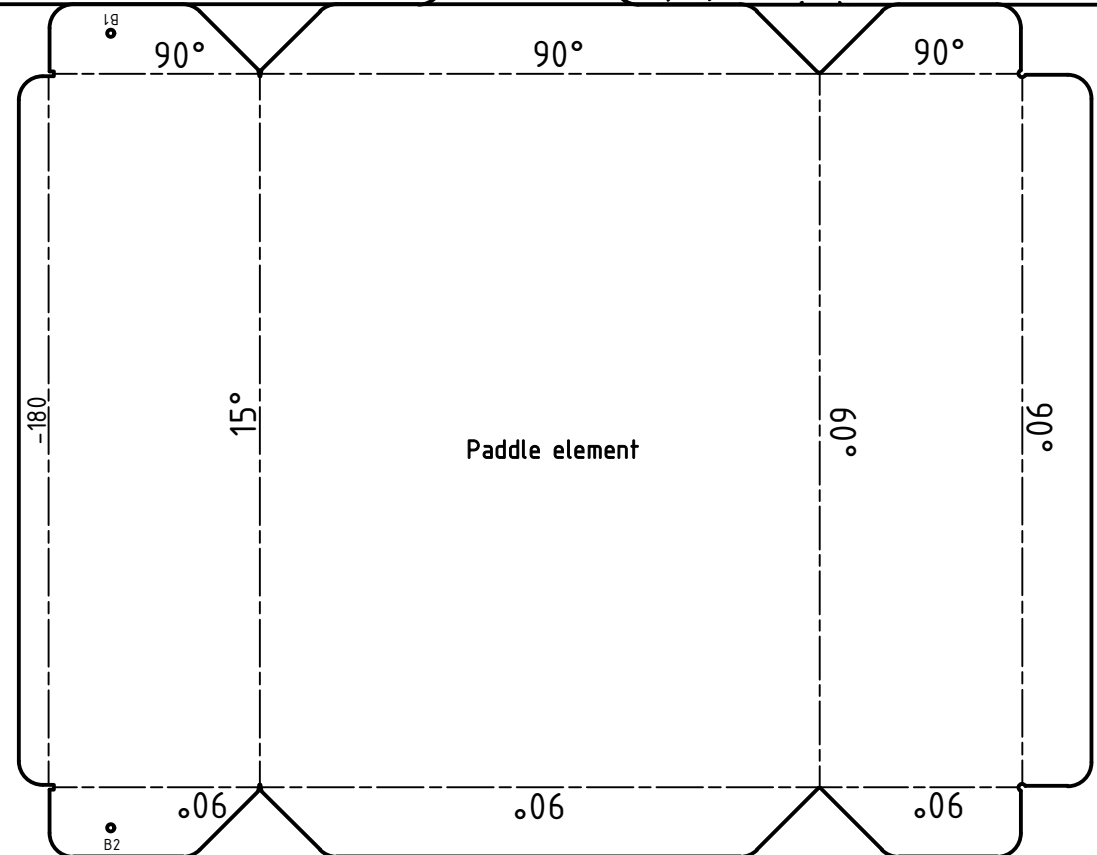
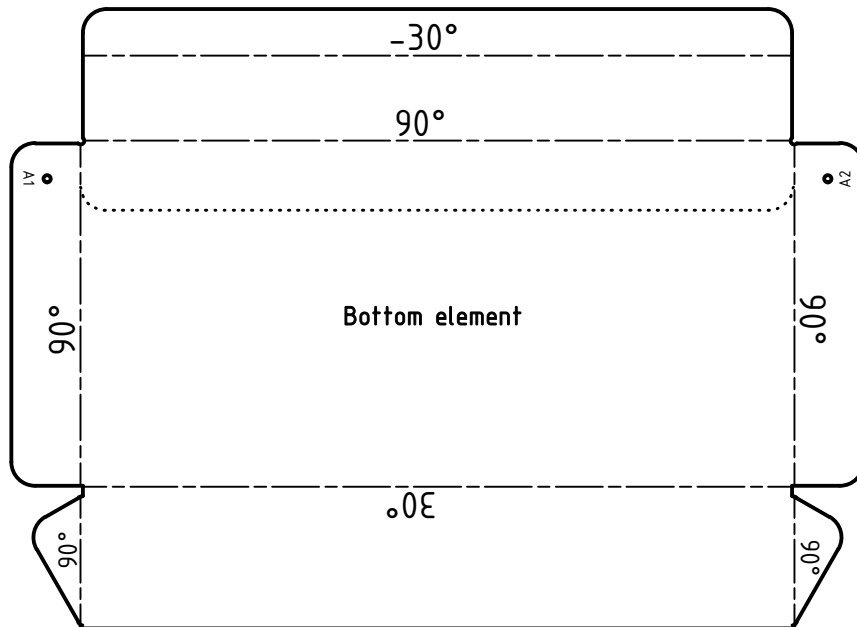
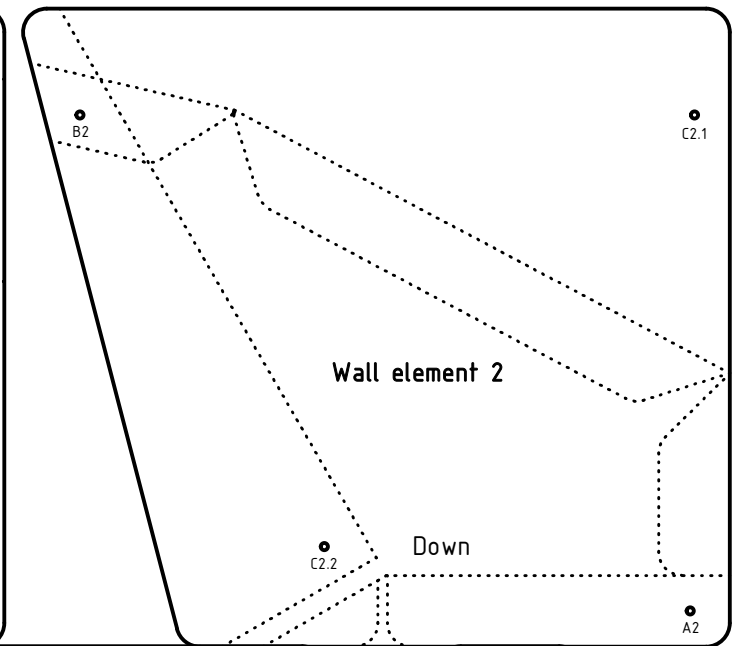
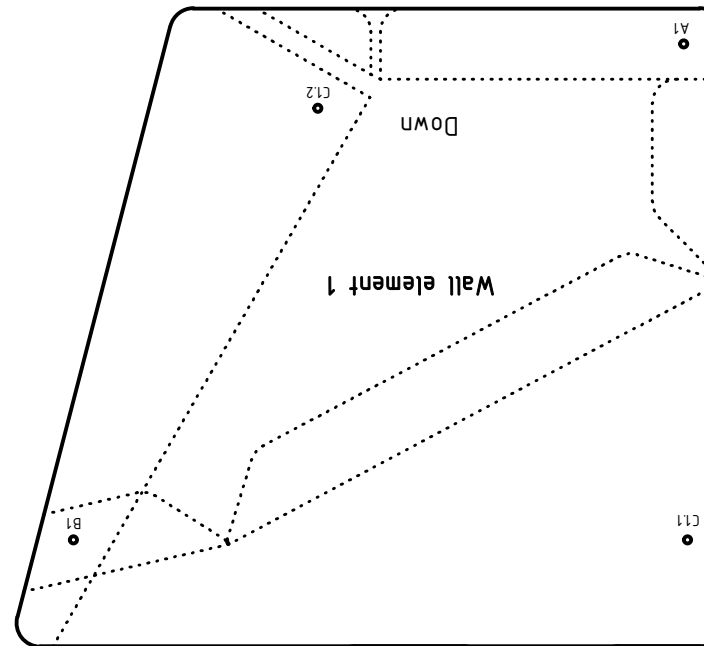
## Instructions:

- Solid line = cut out
  - Intermittent line = fold
  - Dotted line = auxiliary line for gluing
1. Cut out bottom, paddle and wall elements and side plate
  2. Fold positive angles upwards and negative angles downwards
  3. Glue wall element 2 to bottom element
  4. Glue paddle element to bottom and wall element 2  
--> Important! Do not glue flap with B2 marking
  5. Glue wall element 1 to paddle and bottom elements  
--> Important! Do not glue flap with B1 marking
- > Module ready!
6. Glue module at B1/B2 to C1.1/C2.1 from the front module (Now glue the flaps with B1 and B2 marking)
  7. Glue module at A1/A2 to C1.2/C2.2 from the rear module
8. Repeat for all 12 modules
  9. Glue side plates to the side of the modules (watch the symmetry)
- > Waterwheel ready!



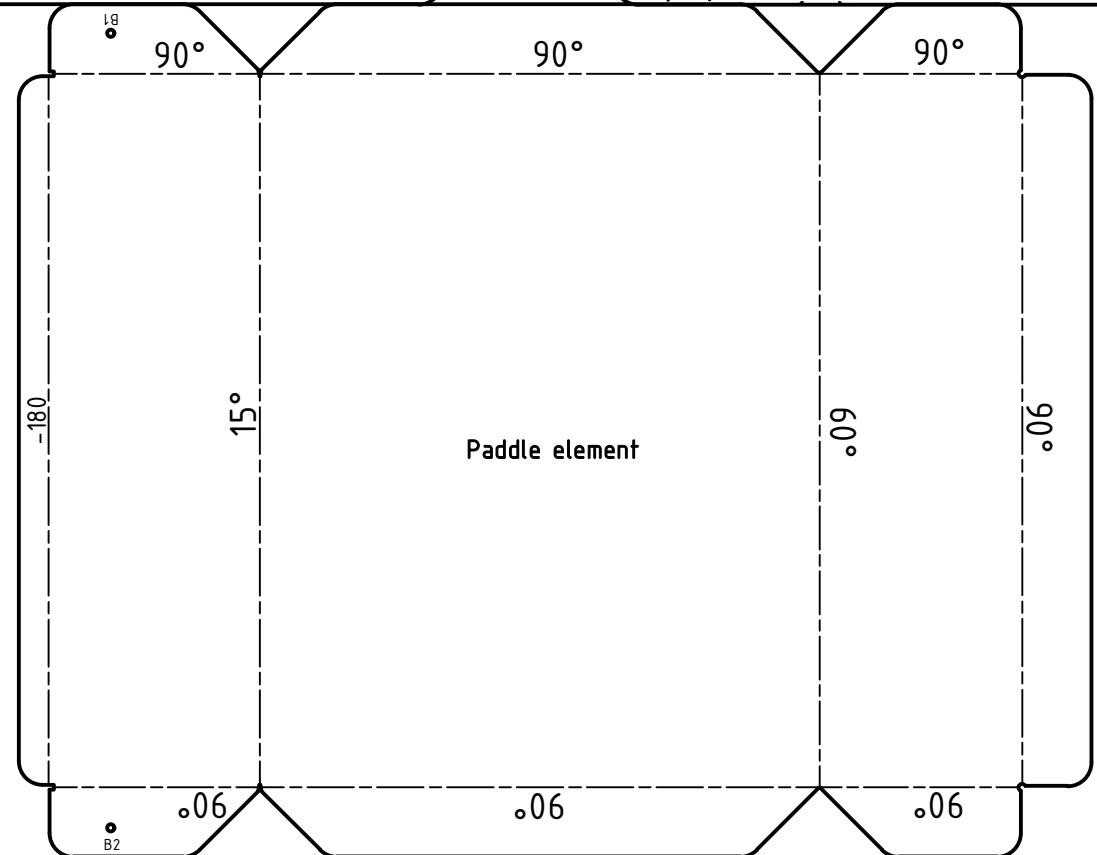
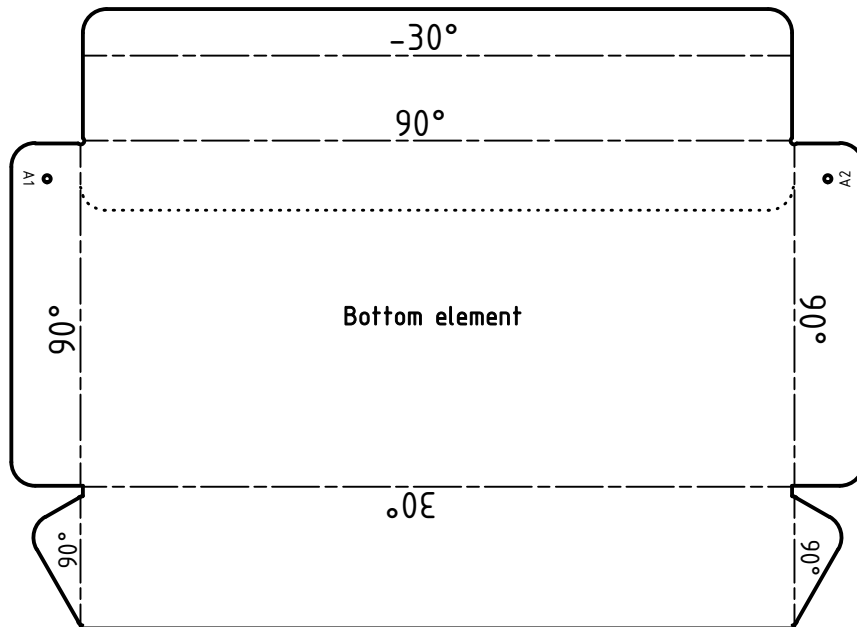
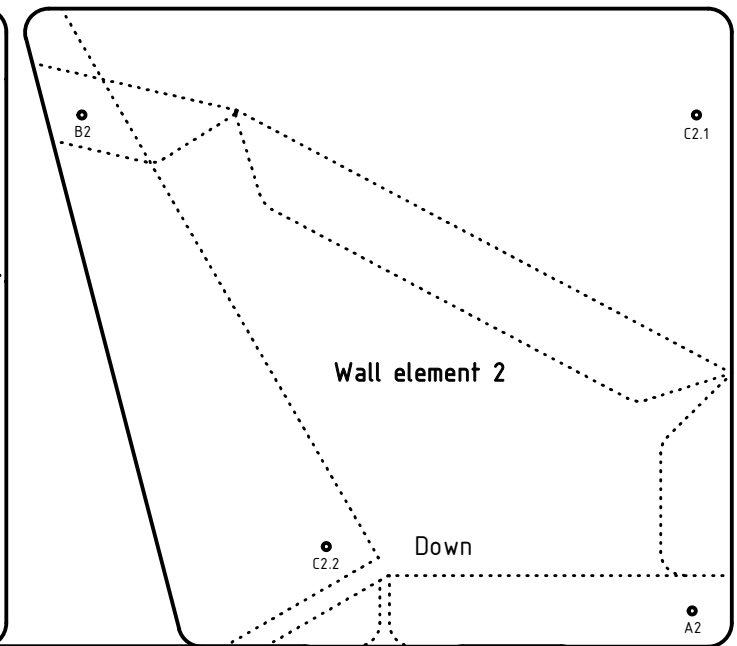
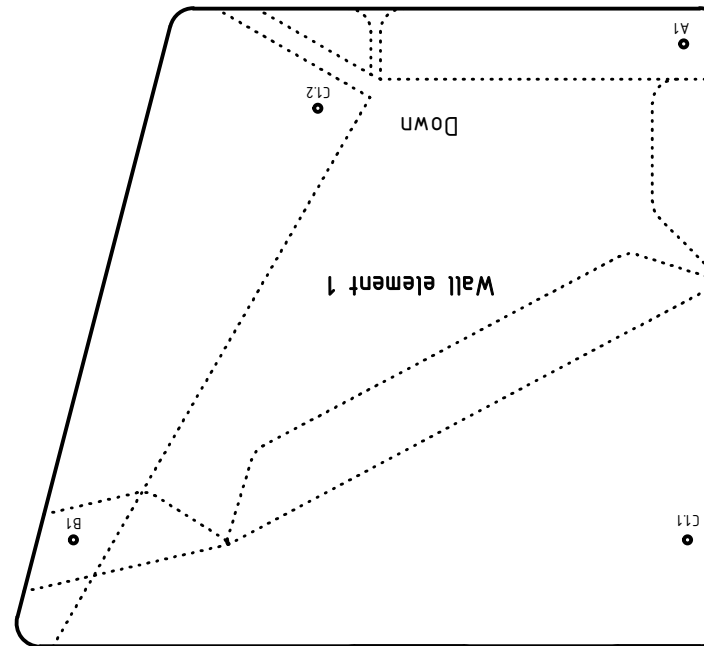
## Instructions:

- Solid line = cut out
  - Intermittent line = fold
  - Dotted line = auxiliary line for gluing
1. Cut out bottom, paddle and wall elements and side plate
  2. Fold positive angles upwards and negative angles downwards
  3. Glue wall element 2 to bottom element
  4. Glue paddle element to bottom and wall element 2  
--> Important! Do not glue flap with B2 marking
  5. Glue wall element 1 to paddle and bottom elements  
--> Important! Do not glue flap with B1 marking
- > Module ready!
6. Glue module at B1/B2 to C1.1/C2.1 from the front module (Now glue the flaps with B1 and B2 marking)
  7. Glue module at A1/A2 to C1.2/C2.2 from the rear module
8. Repeat for all 12 modules
  9. Glue side plates to the side of the modules (watch the symmetry)
- > Waterwheel ready!



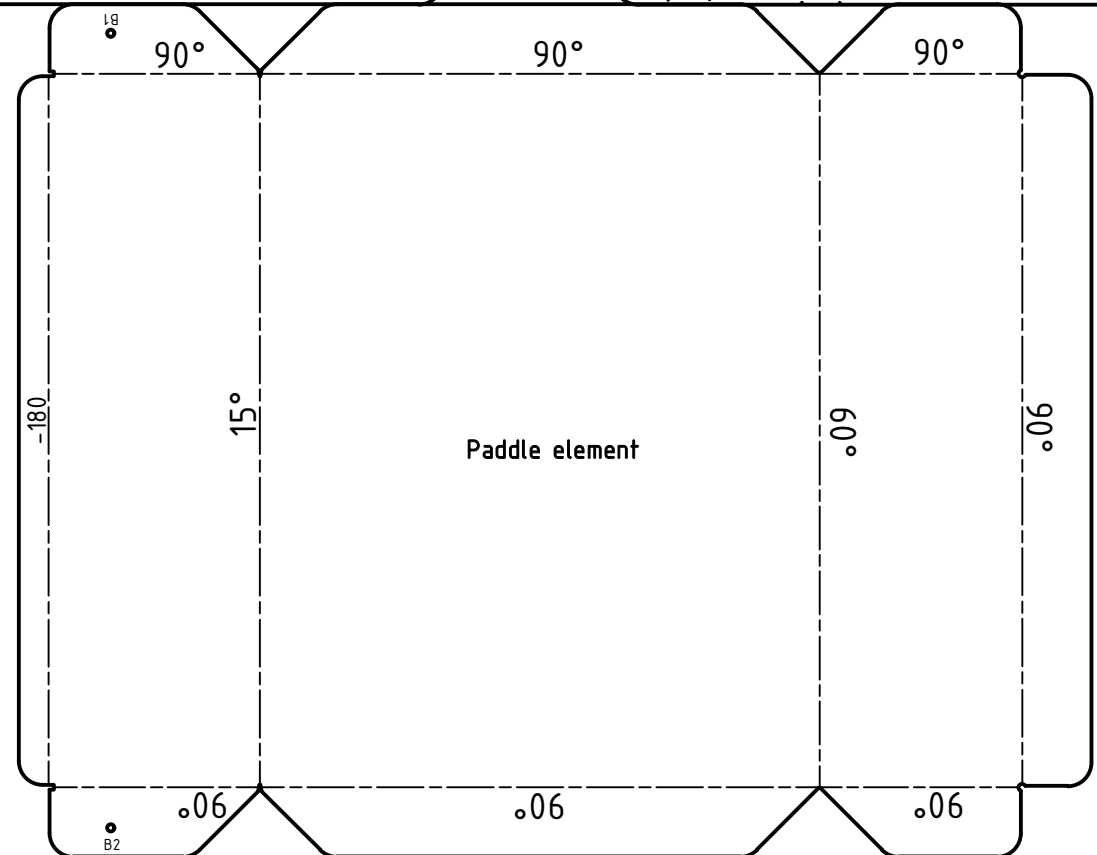
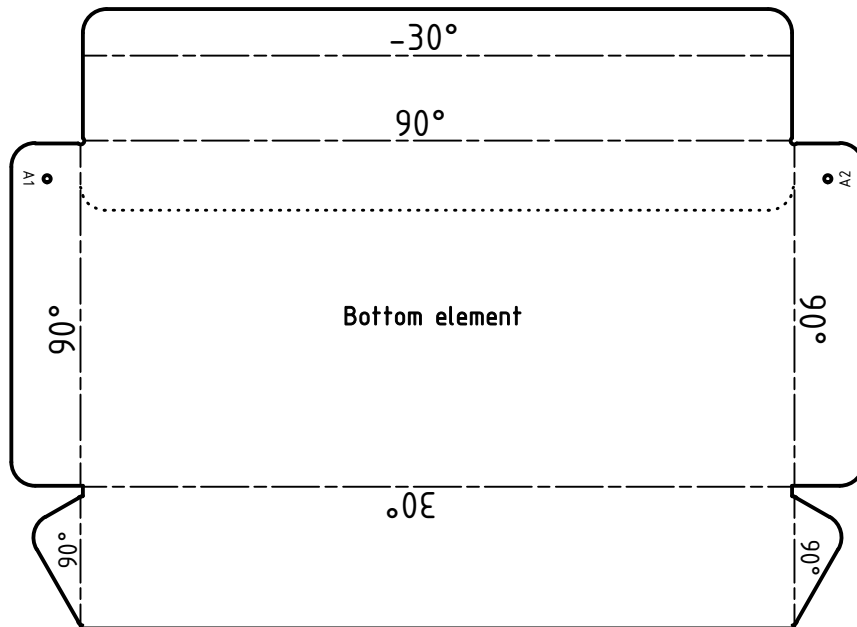
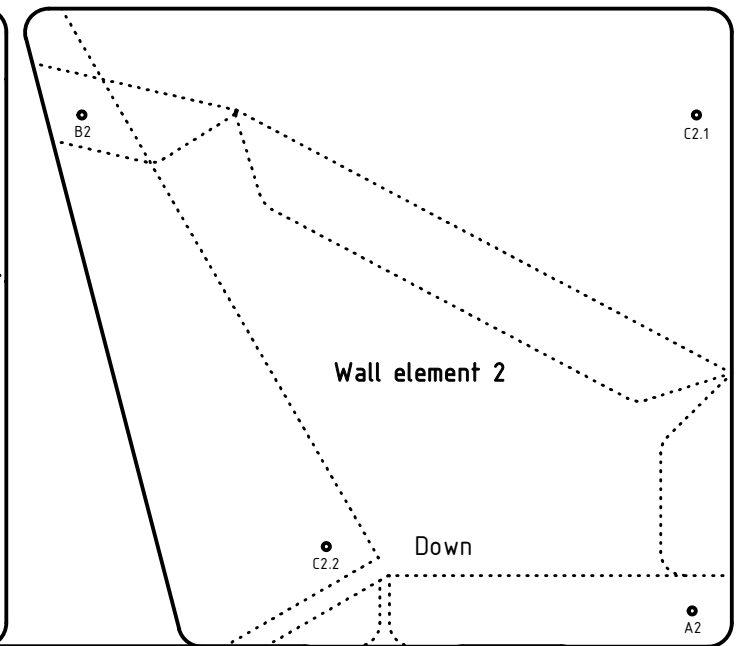
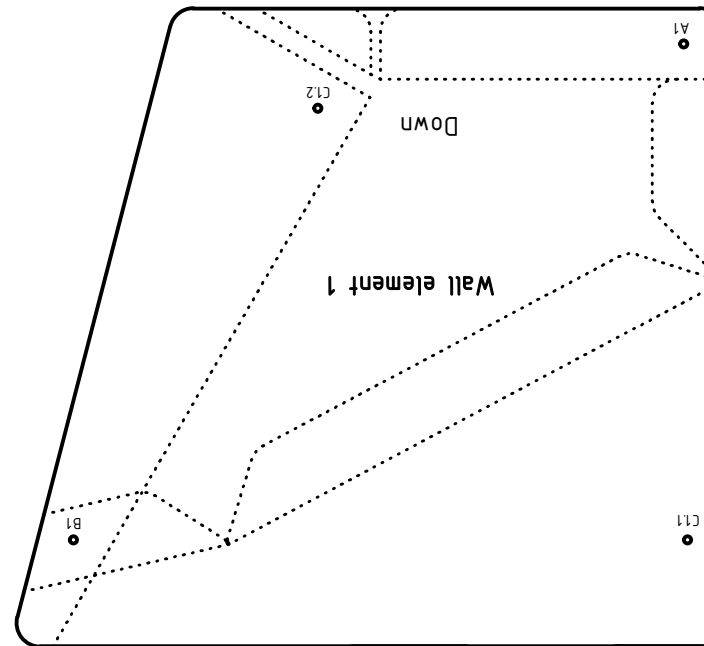
## Instructions:

- Solid line = cut out
  - Intermittent line = fold
  - Dotted line = auxiliary line for gluing
1. Cut out bottom, paddle and wall elements and side plate
  2. Fold positive angles upwards and negative angles downwards
  3. Glue wall element 2 to bottom element
  4. Glue paddle element to bottom and wall element 2  
--> Important! Do not glue flap with B2 marking
  5. Glue wall element 1 to paddle and bottom elements  
--> Important! Do not glue flap with B1 marking
- > Module ready!
6. Glue module at B1/B2 to C1.1/C2.1 from the front module (Now glue the flaps with B1 and B2 marking)
  7. Glue module at A1/A2 to C1.2/C2.2 from the rear module
8. Repeat for all 12 modules
  9. Glue side plates to the side of the modules (watch the symmetry)
- > Waterwheel ready!



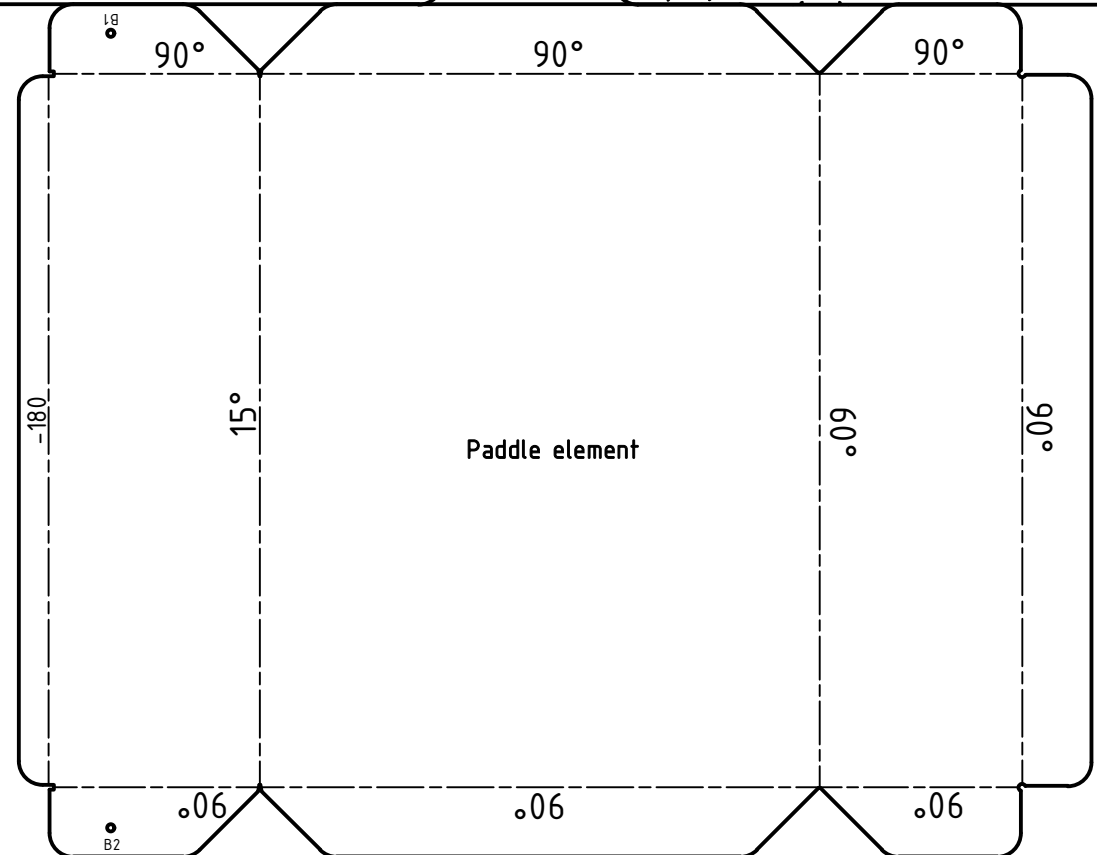
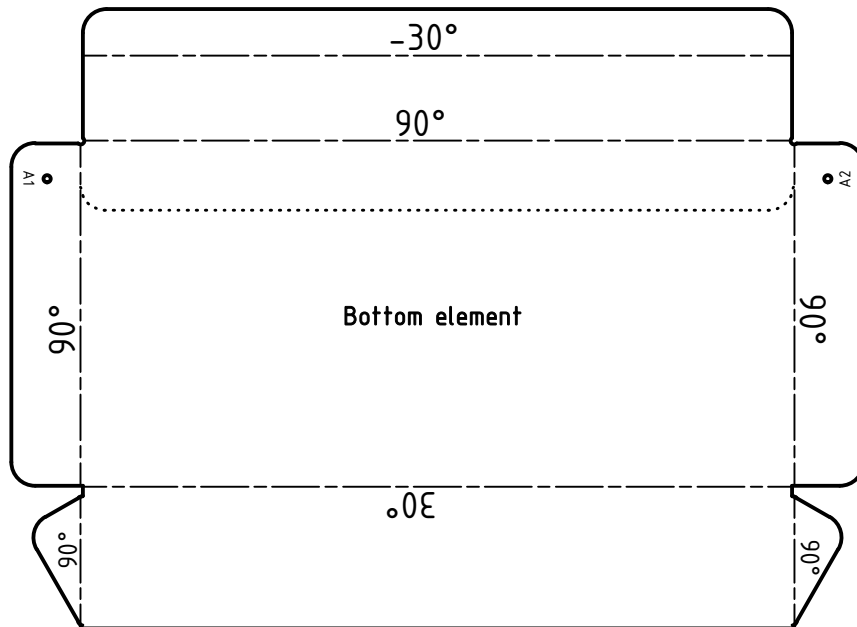
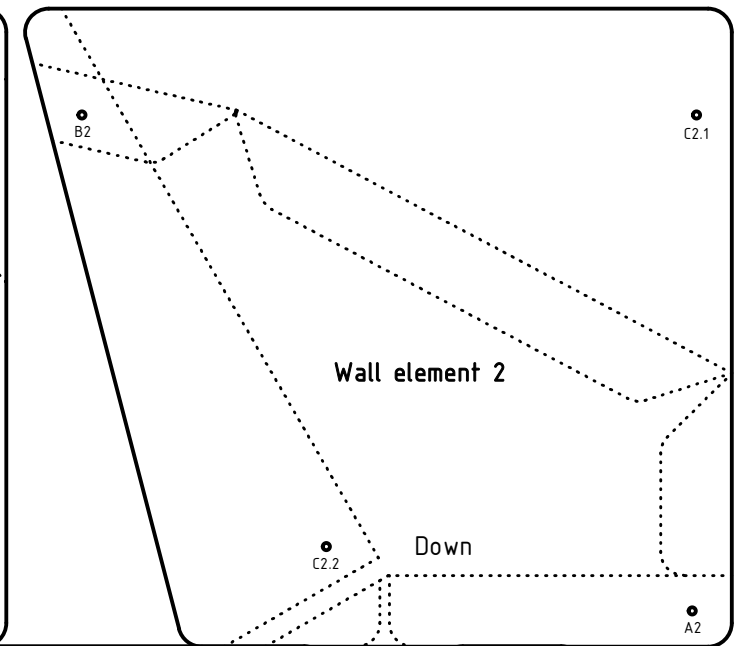
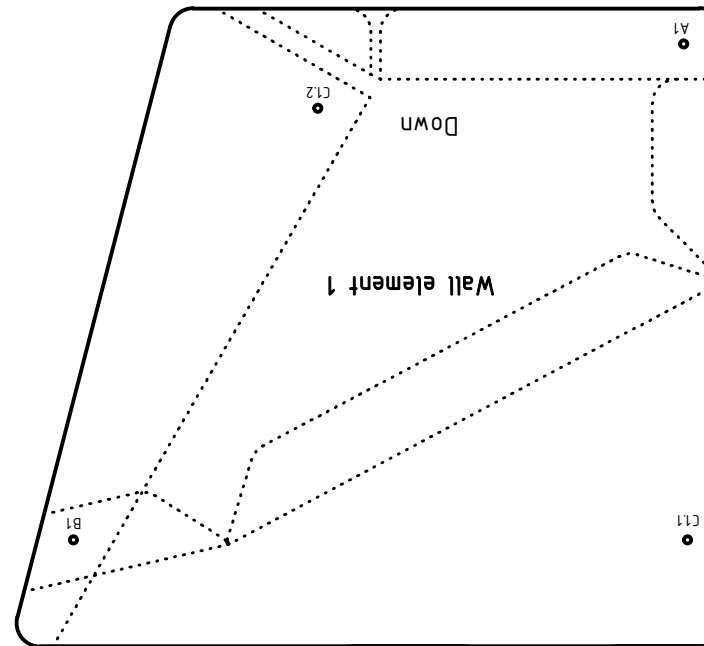
## Instructions:

- Solid line = cut out
  - Intermittent line = fold
  - Dotted line = auxiliary line for gluing
1. Cut out bottom, paddle and wall elements and side plate
  2. Fold positive angles upwards and negative angles downwards
  3. Glue wall element 2 to bottom element
  4. Glue paddle element to bottom and wall element 2  
--> Important! Do not glue flap with B2 marking
  5. Glue wall element 1 to paddle and bottom elements  
--> Important! Do not glue flap with B1 marking
- > Module ready!
6. Glue module at B1/B2 to C1.1/C2.1 from the front module (Now glue the flaps with B1 and B2 marking)
  7. Glue module at A1/A2 to C1.2/C2.2 from the rear module
8. Repeat for all 12 modules
  9. Glue side plates to the side of the modules (watch the symmetry)
- > Waterwheel ready!



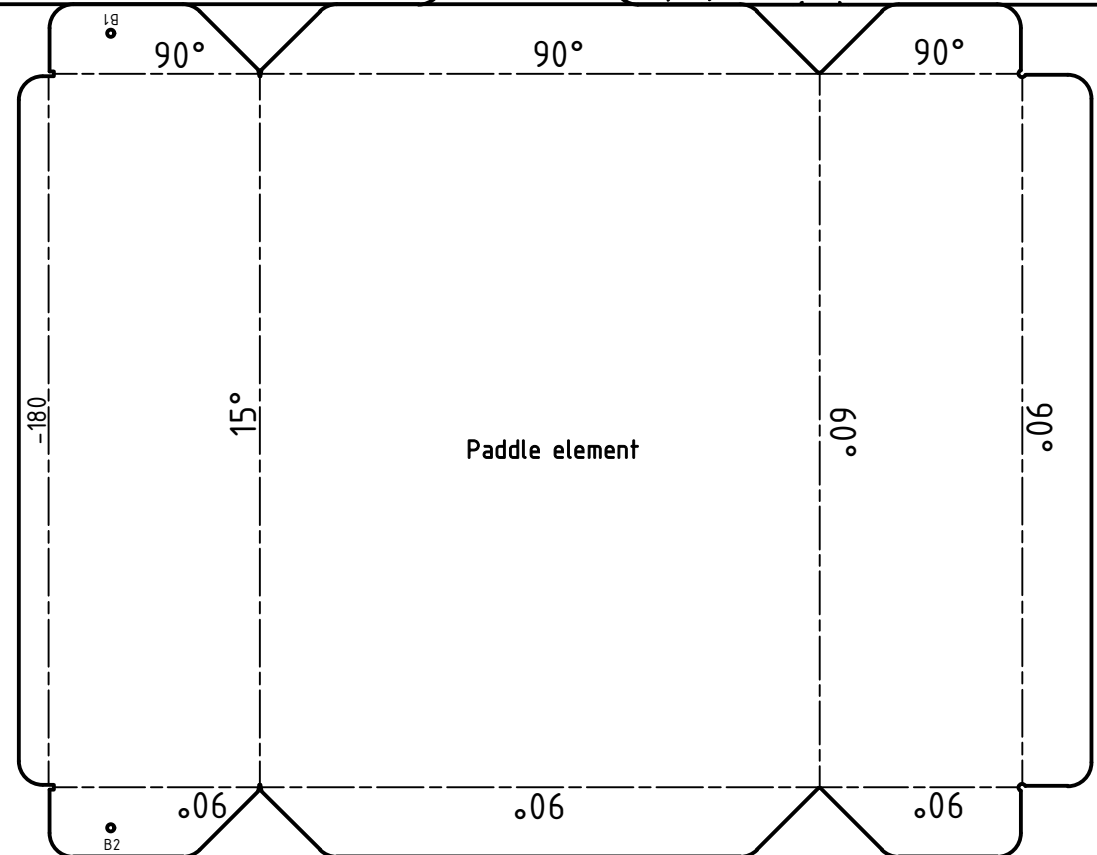
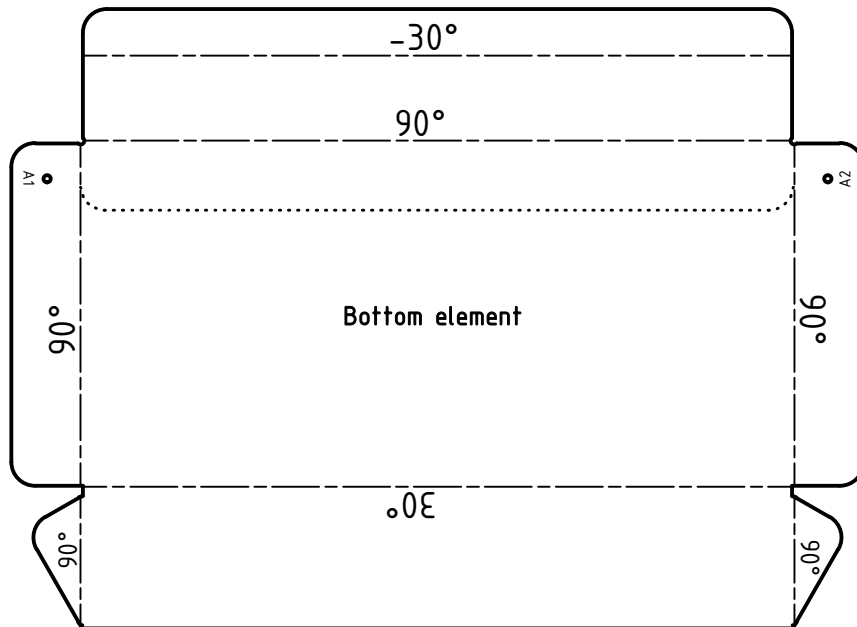
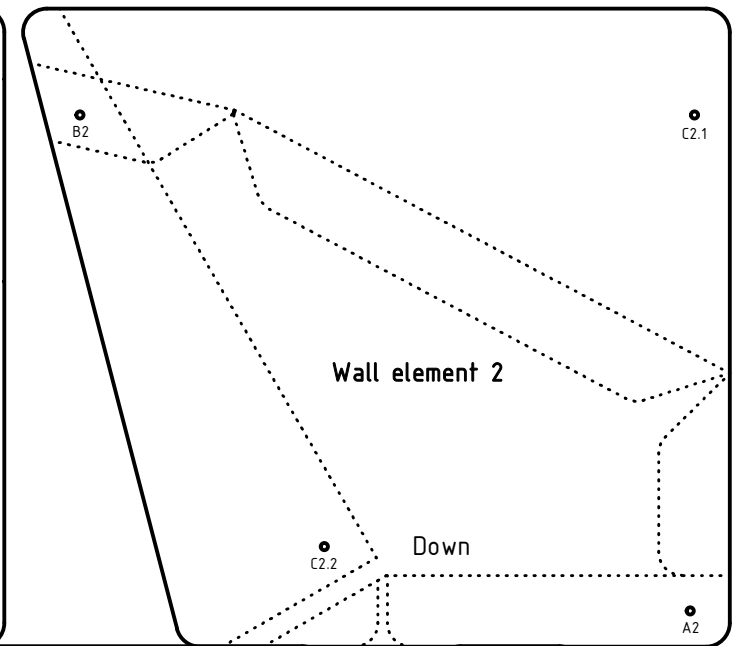
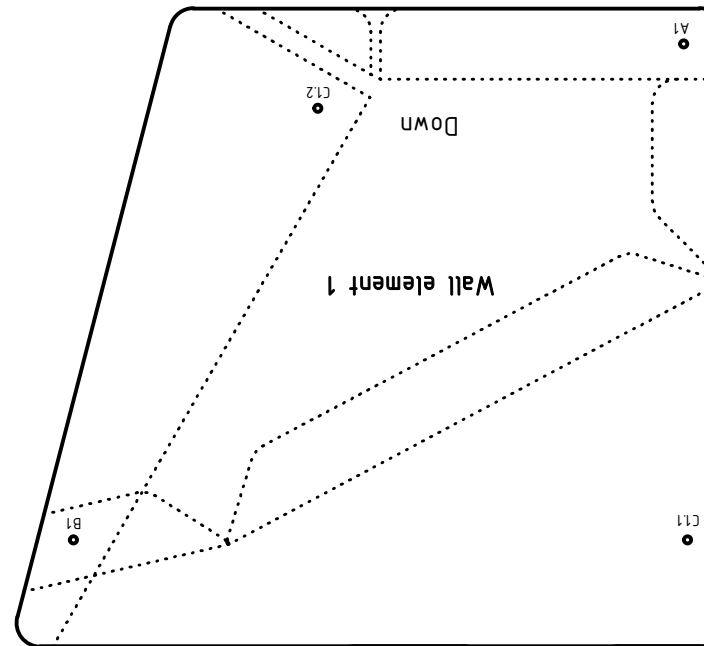
## Instructions:

- Solid line = cut out
  - Intermittent line = fold
  - Dotted line = auxiliary line for gluing
1. Cut out bottom, paddle and wall elements and side plate
  2. Fold positive angles upwards and negative angles downwards
  3. Glue wall element 2 to bottom element
  4. Glue paddle element to bottom and wall element 2  
--> Important! Do not glue flap with B2 marking
  5. Glue wall element 1 to paddle and bottom elements  
--> Important! Do not glue flap with B1 marking
- > Module ready!
6. Glue module at B1/B2 to C1.1/C2.1 from the front module (Now glue the flaps with B1 and B2 marking)
  7. Glue module at A1/A2 to C1.2/C2.2 from the rear module
8. Repeat for all 12 modules
  9. Glue side plates to the side of the modules (watch the symmetry)
- > Waterwheel ready!



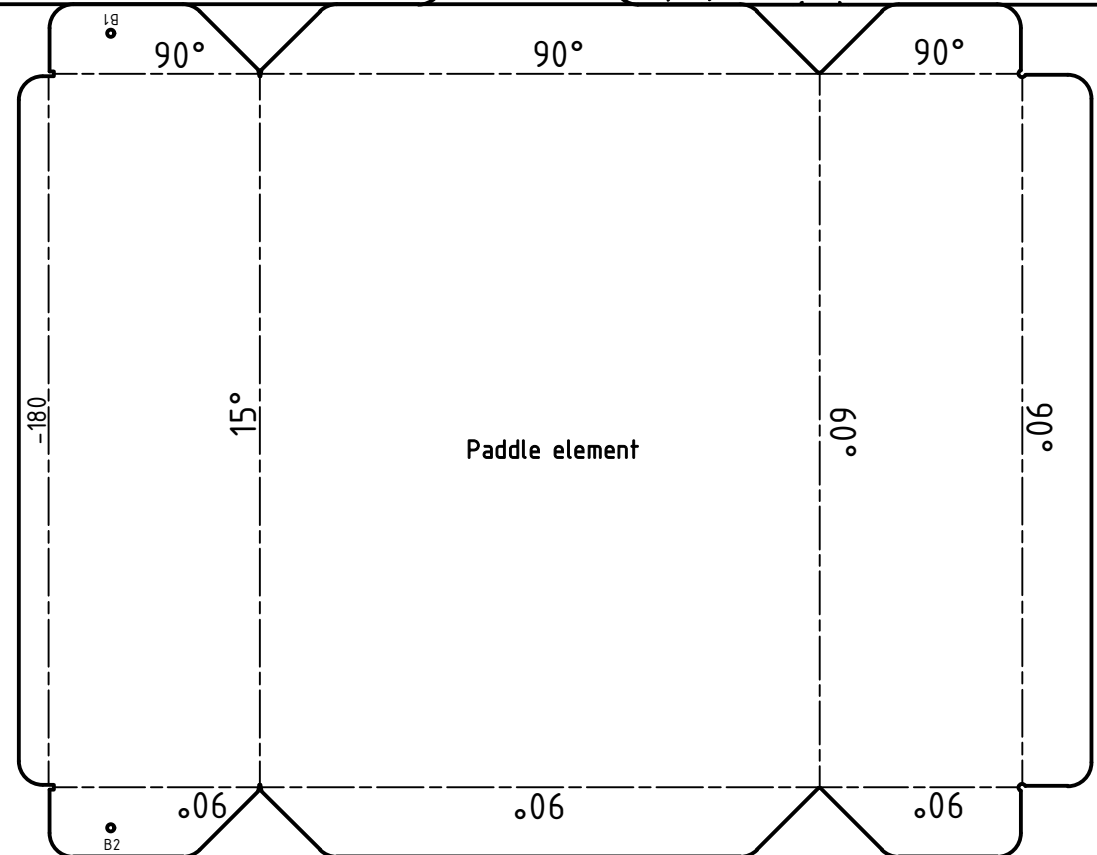
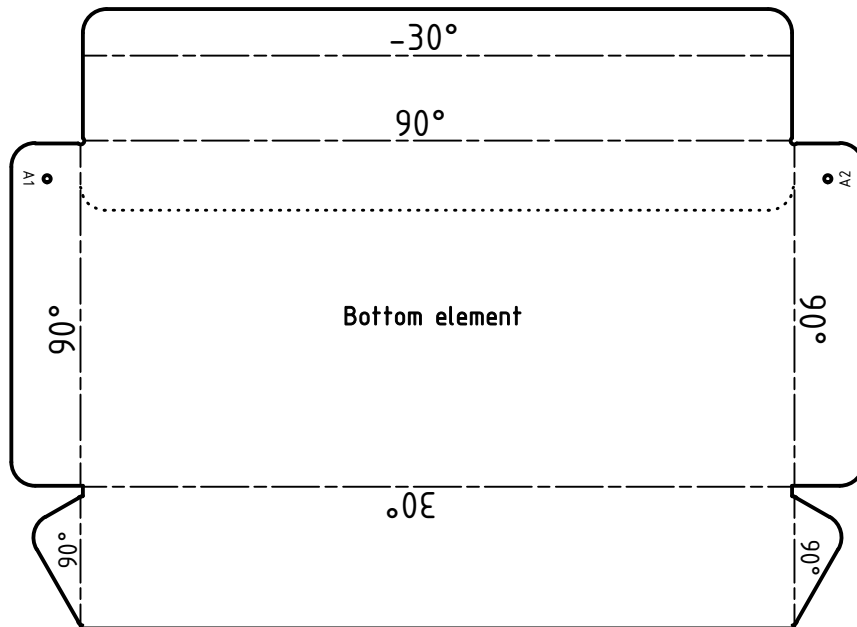
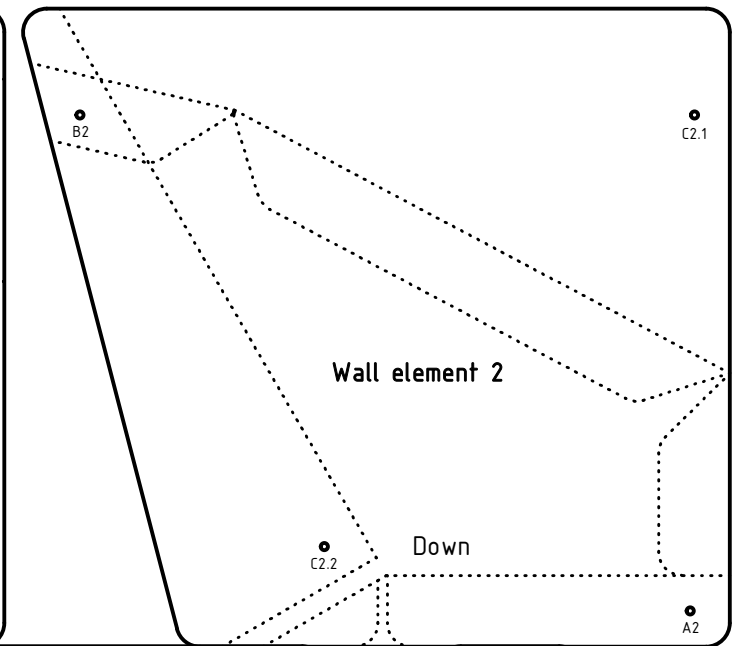
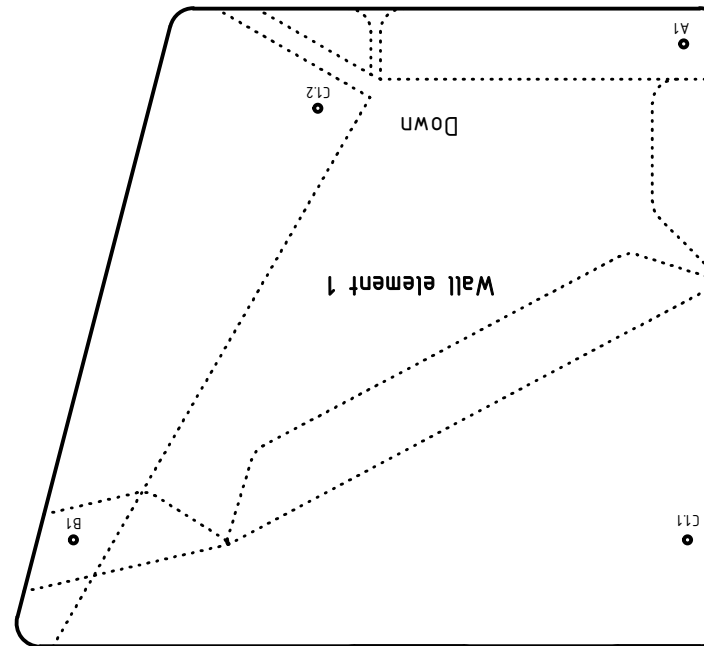
## Instructions:

- Solid line = cut out
  - Intermittent line = fold
  - Dotted line = auxiliary line for gluing
1. Cut out bottom, paddle and wall elements and side plate
  2. Fold positive angles upwards and negative angles downwards
  3. Glue wall element 2 to bottom element
  4. Glue paddle element to bottom and wall element 2  
--> Important! Do not glue flap with B2 marking
  5. Glue wall element 1 to paddle and bottom elements  
--> Important! Do not glue flap with B1 marking
- > Module ready!
6. Glue module at B1/B2 to C1.1/C2.1 from the front module (Now glue the flaps with B1 and B2 marking)
  7. Glue module at A1/A2 to C1.2/C2.2 from the rear module
8. Repeat for all 12 modules
  9. Glue side plates to the side of the modules (watch the symmetry)
- > Waterwheel ready!



## Instructions:

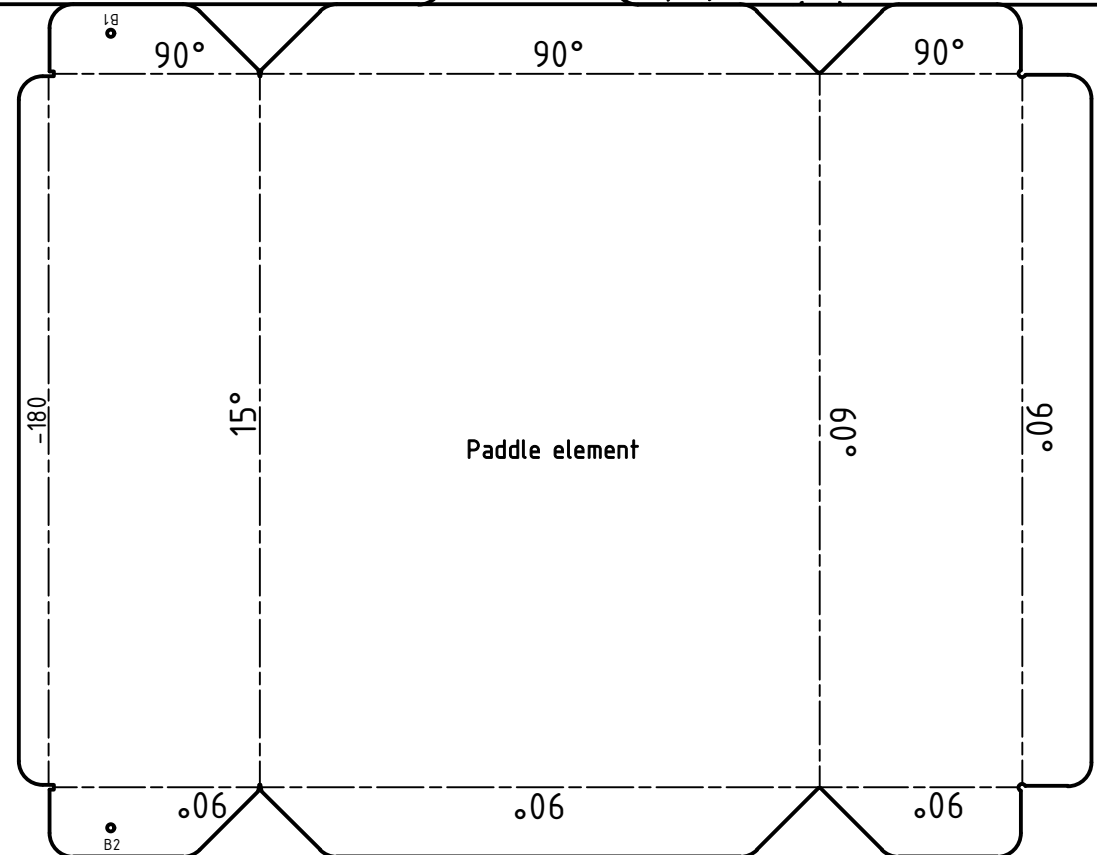
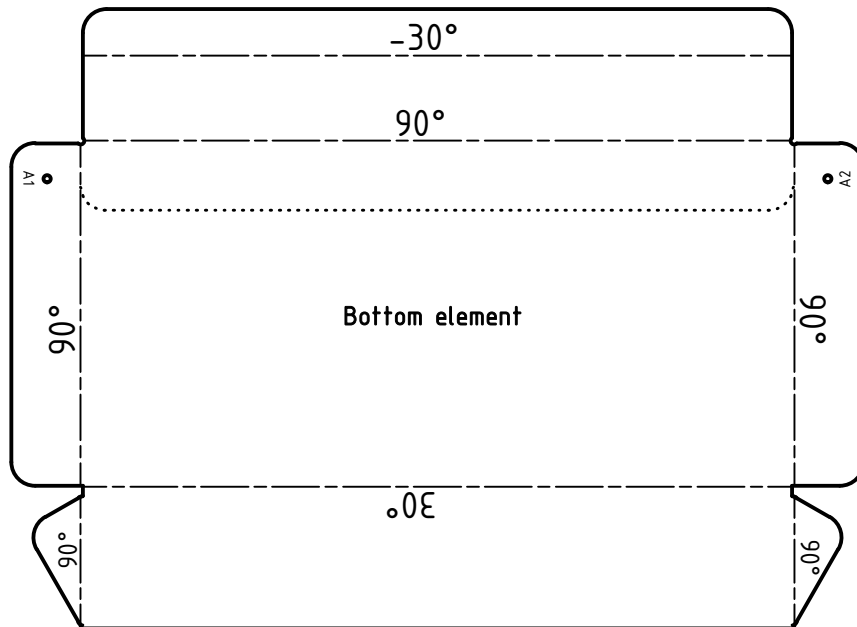
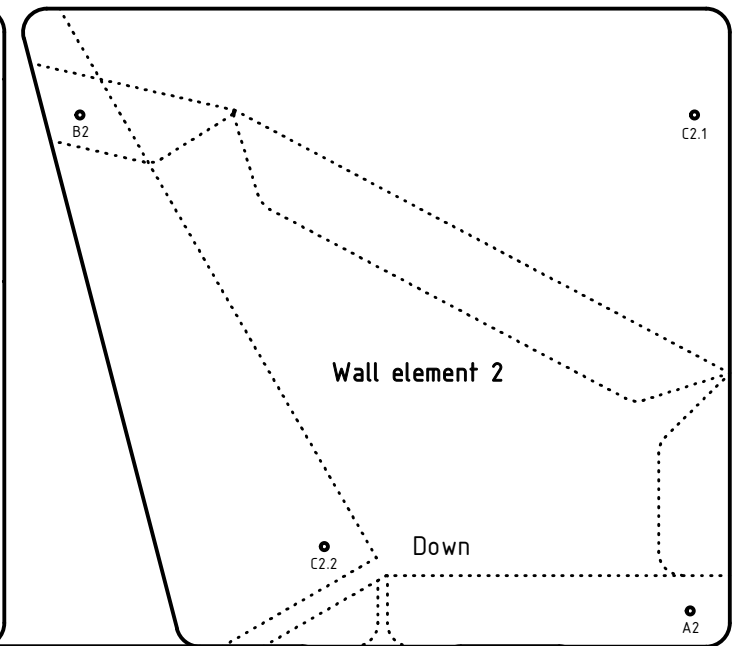
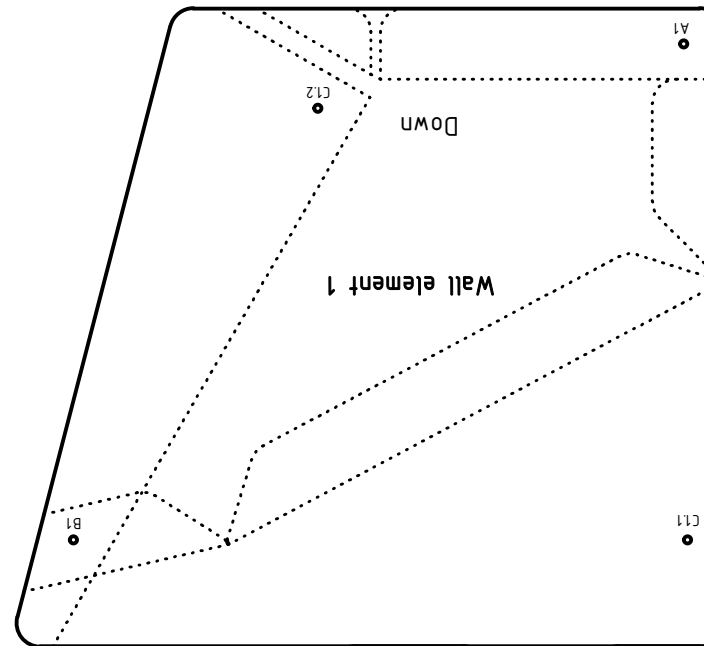
- Solid line = cut out
  - Intermittent line = fold
  - Dotted line = auxiliary line for gluing
1. Cut out bottom, paddle and wall elements and side plate
  2. Fold positive angles upwards and negative angles downwards
  3. Glue wall element 2 to bottom element
  4. Glue paddle element to bottom and wall element 2  
--> Important! Do not glue flap with B2 marking
  5. Glue wall element 1 to paddle and bottom elements  
--> Important! Do not glue flap with B1 marking
- > Module ready!
6. Glue module at B1/B2 to C1.1/C2.1 from the front module (Now glue the flaps with B1 and B2 marking)
  7. Glue module at A1/A2 to C1.2/C2.2 from the rear module
8. Repeat for all 12 modules
  9. Glue side plates to the side of the modules (watch the symmetry)
- > Waterwheel ready!





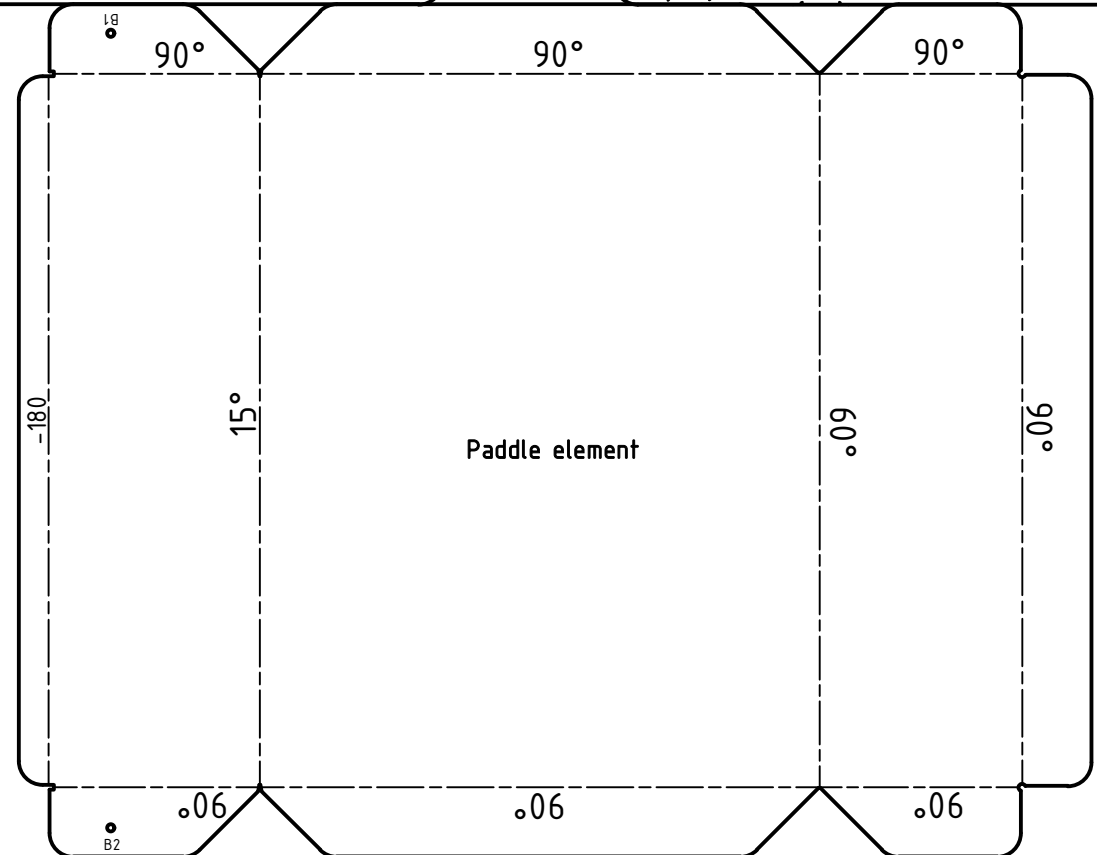
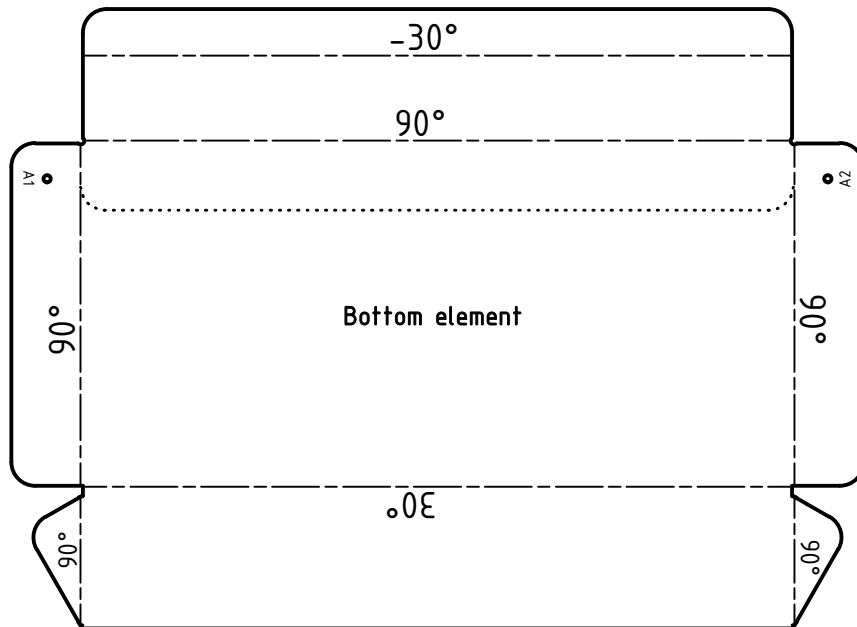
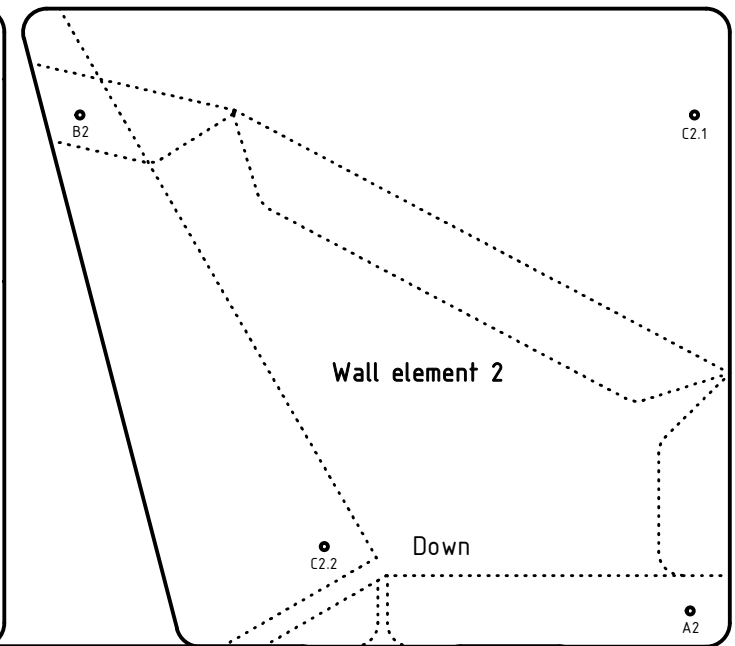
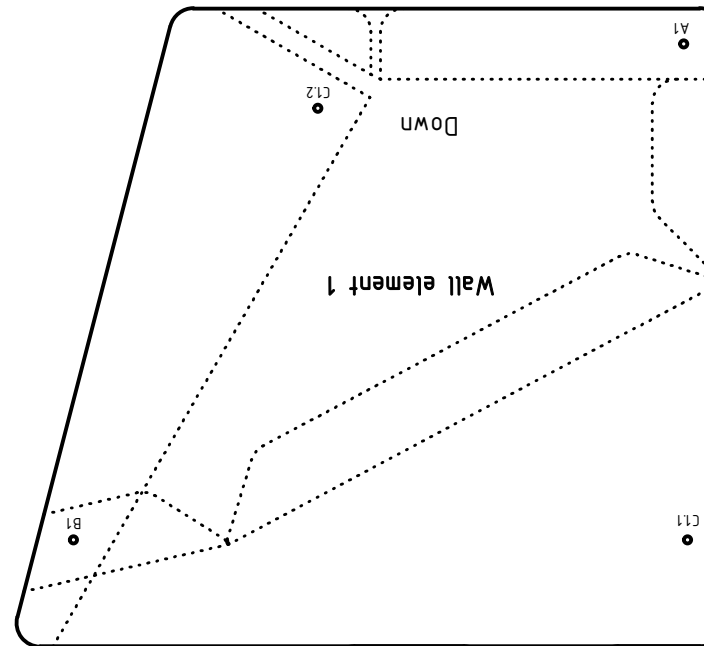
## Instructions:

- Solid line = cut out
  - Intermittent line = fold
  - Dotted line = auxiliary line for gluing
1. Cut out bottom, paddle and wall elements and side plate
  2. Fold positive angles upwards and negative angles downwards
  3. Glue wall element 2 to bottom element
  4. Glue paddle element to bottom and wall element 2  
--> Important! Do not glue flap with B2 marking
  5. Glue wall element 1 to paddle and bottom elements  
--> Important! Do not glue flap with B1 marking
- > Module ready!
6. Glue module at B1/B2 to C1.1/C2.1 from the front module (Now glue the flaps with B1 and B2 marking)
  7. Glue module at A1/A2 to C1.2/C2.2 from the rear module
8. Repeat for all 12 modules
  9. Glue side plates to the side of the modules (watch the symmetry)
- > Waterwheel ready!



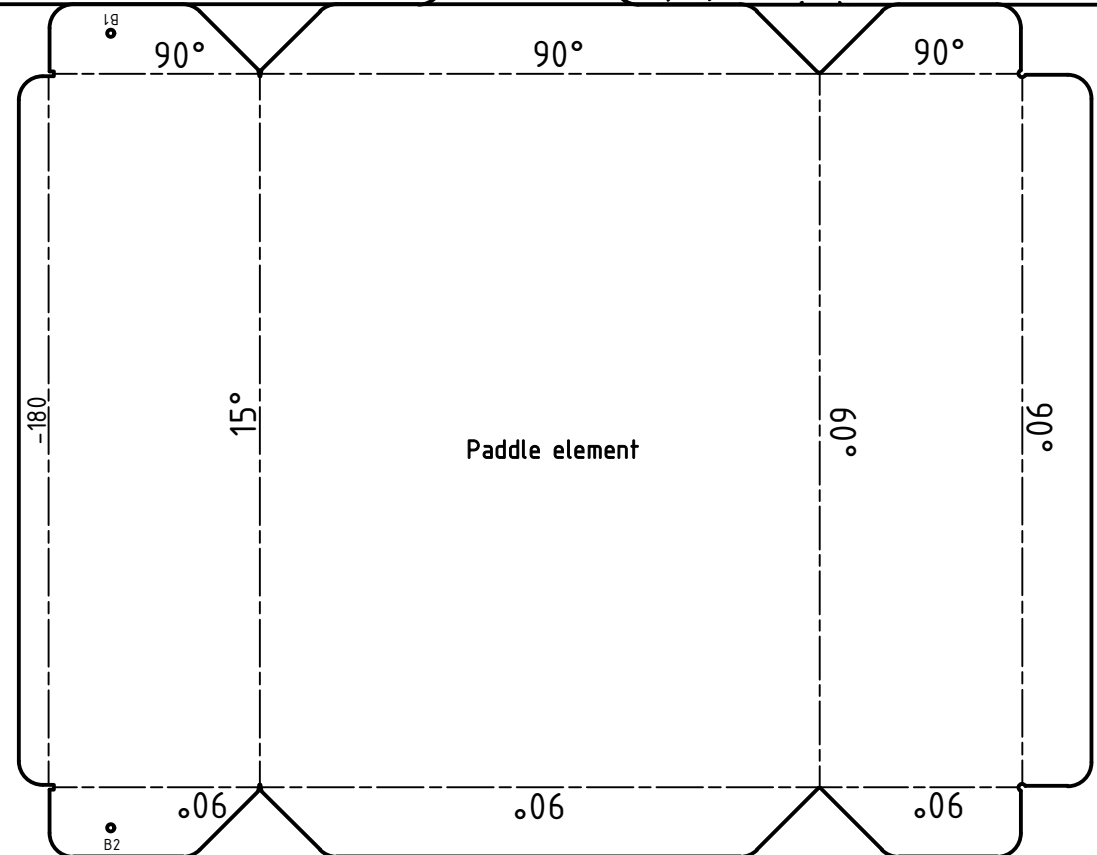
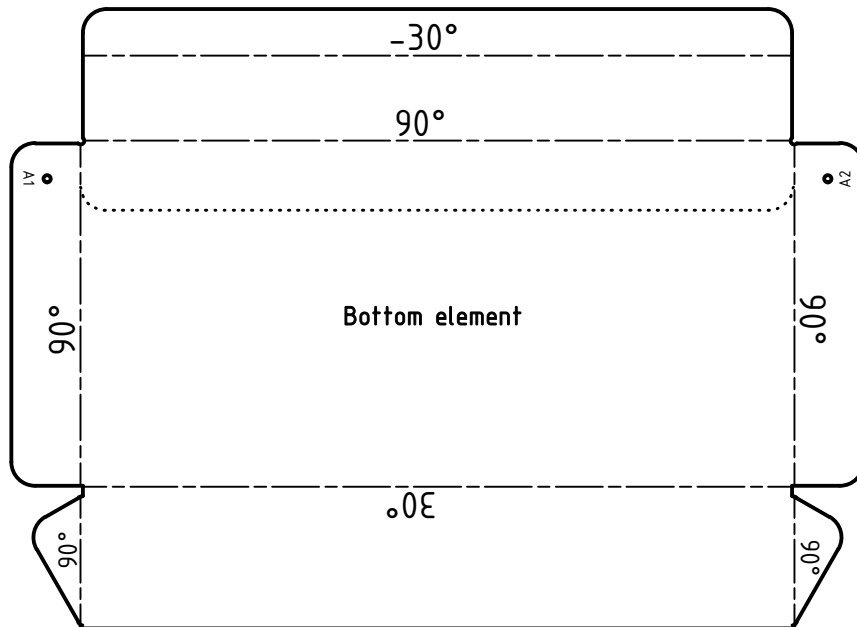
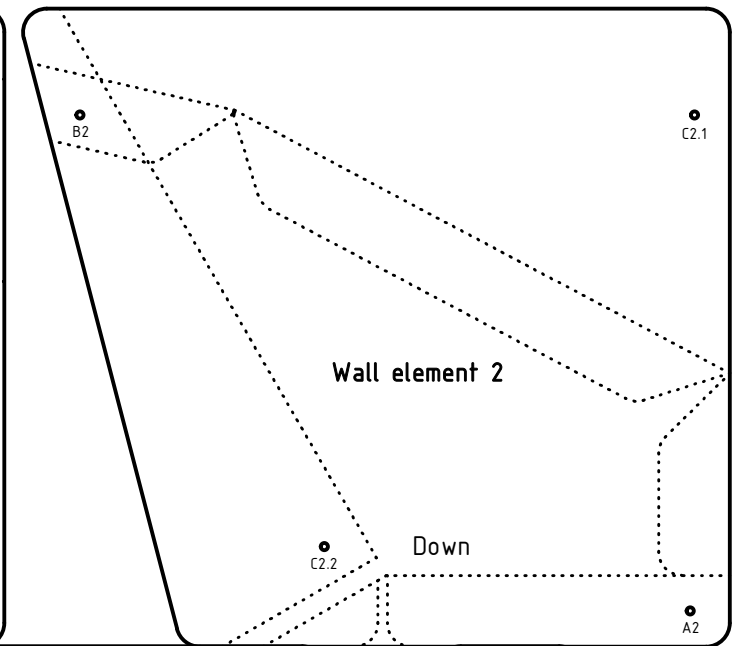
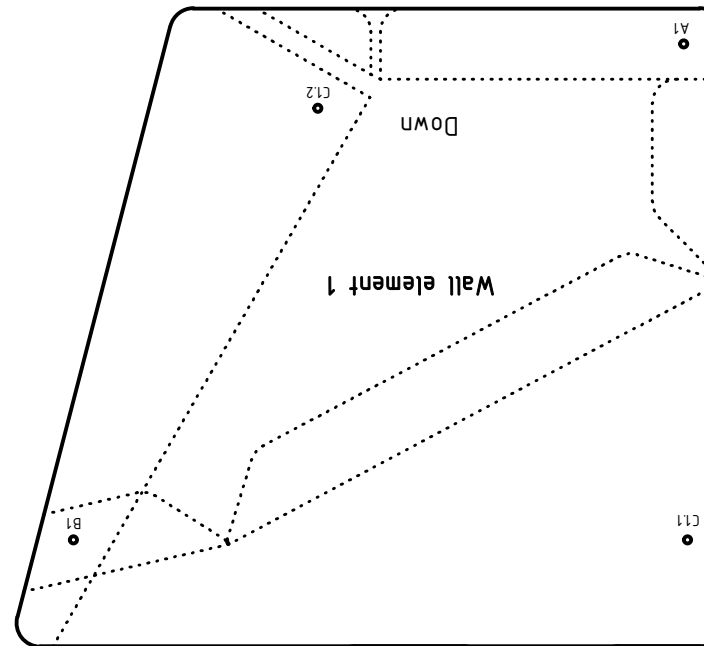
## Instructions:

- Solid line = cut out
  - Intermittent line = fold
  - Dotted line = auxiliary line for gluing
1. Cut out bottom, paddle and wall elements and side plate
  2. Fold positive angles upwards and negative angles downwards
  3. Glue wall element 2 to bottom element
  4. Glue paddle element to bottom and wall element 2  
--> Important! Do not glue flap with B2 marking
  5. Glue wall element 1 to paddle and bottom elements  
--> Important! Do not glue flap with B1 marking
- > Module ready!
6. Glue module at B1/B2 to C1.1/C2.1 from the front module (Now glue the flaps with B1 and B2 marking)
  7. Glue module at A1/A2 to C1.2/C2.2 from the rear module
8. Repeat for all 12 modules
  9. Glue side plates to the side of the modules (watch the symmetry)
- > Waterwheel ready!



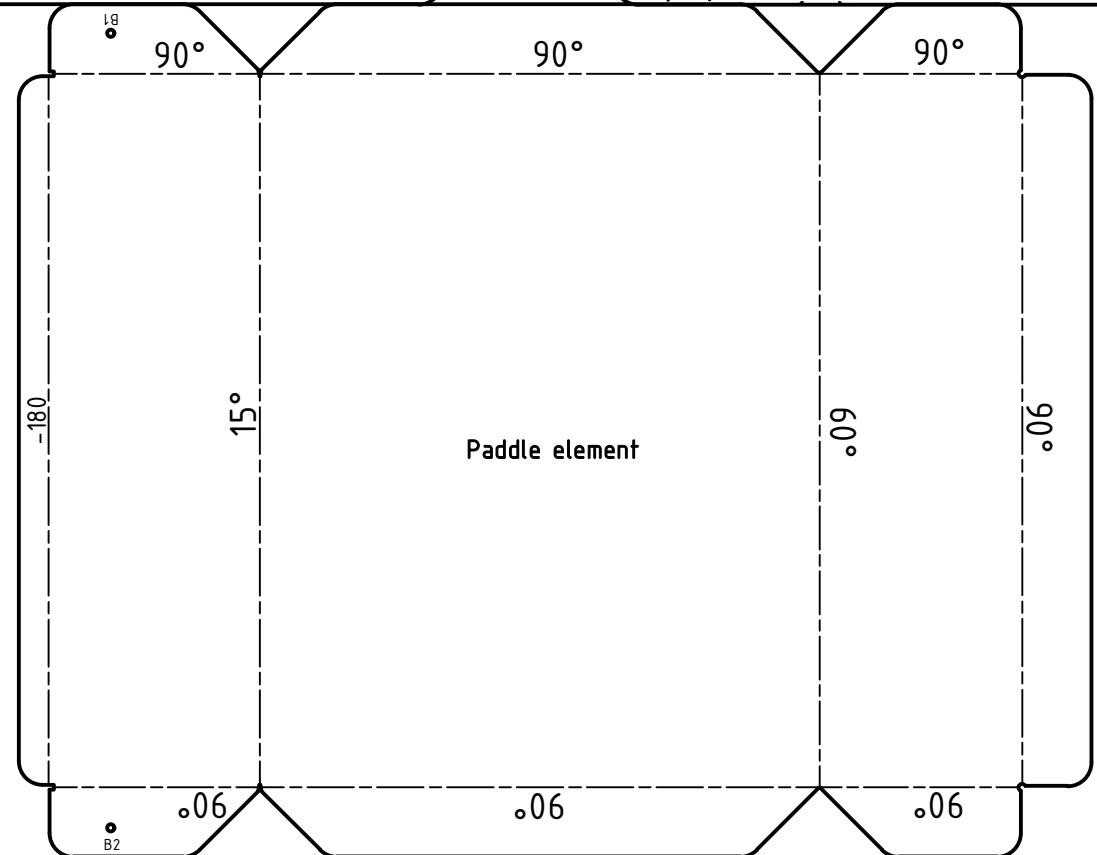
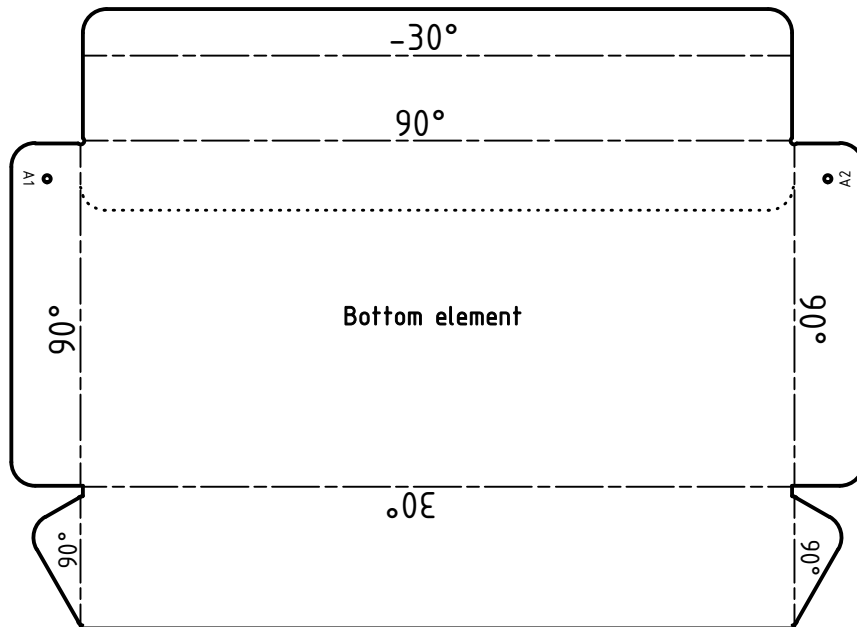
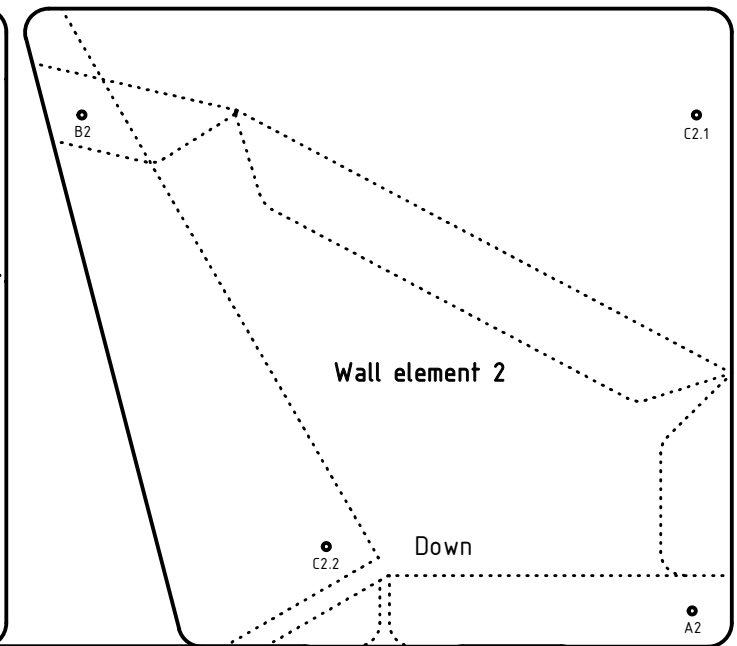
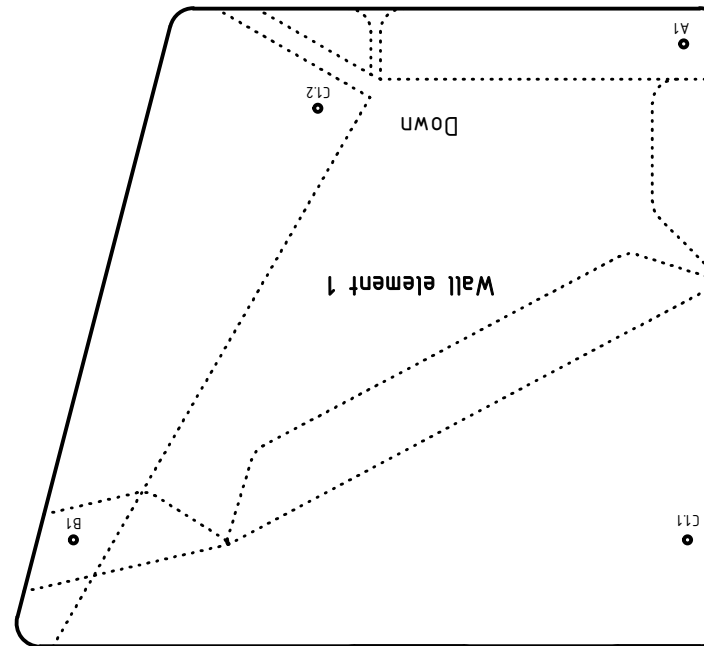
## Instructions:

- Solid line = cut out
  - Intermittent line = fold
  - Dotted line = auxiliary line for gluing
1. Cut out bottom, paddle and wall elements and side plate
  2. Fold positive angles upwards and negative angles downwards
  3. Glue wall element 2 to bottom element
  4. Glue paddle element to bottom and wall element 2  
--> Important! Do not glue flap with B2 marking
  5. Glue wall element 1 to paddle and bottom elements  
--> Important! Do not glue flap with B1 marking
- > Module ready!
6. Glue module at B1/B2 to C1.1/C2.1 from the front module (Now glue the flaps with B1 and B2 marking)
  7. Glue module at A1/A2 to C1.2/C2.2 from the rear module
8. Repeat for all 12 modules
  9. Glue side plates to the side of the modules (watch the symmetry)
- > Waterwheel ready!

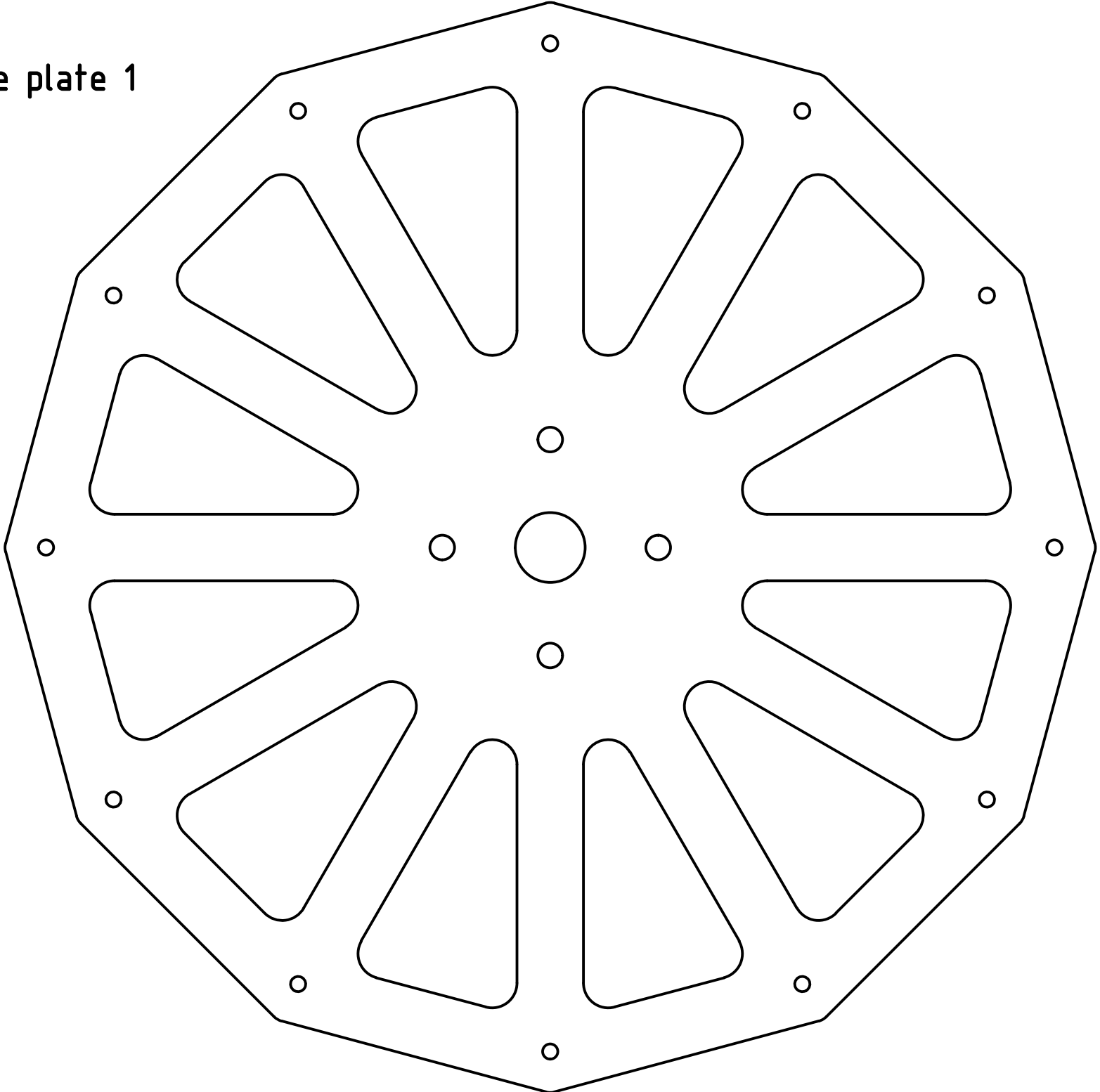


## Instructions:

- Solid line = cut out
  - Intermittent line = fold
  - Dotted line = auxiliary line for gluing
1. Cut out bottom, paddle and wall elements and side plate
  2. Fold positive angles upwards and negative angles downwards
  3. Glue wall element 2 to bottom element
  4. Glue paddle element to bottom and wall element 2  
--> Important! Do not glue flap with B2 marking
  5. Glue wall element 1 to paddle and bottom elements  
--> Important! Do not glue flap with B1 marking
- > Module ready!
6. Glue module at B1/B2 to C1.1/C2.1 from the front module (Now glue the flaps with B1 and B2 marking)
  7. Glue module at A1/A2 to C1.2/C2.2 from the rear module
8. Repeat for all 12 modules
  9. Glue side plates to the side of the modules (watch the symmetry)
- > Waterwheel ready!



Side plate 1



Side plate 2

