



---

# Print Skirt Tutorial

---

## Here is what you need

1 Meter of medium to heavy stretch Jersey fabric



Coordinating thread

Sewing machine

Tape measure

Scissors

1meter of 1 inch wide elastic band

## Prepare your Machine

1. Thread your machine and bobbin with co-ordinating threads.
2. Set stitch length to 2.5cm.
3. Set tension to 3
4. Test on a piece of your fabric to make sure the tension is right, if it is right when you sew the fabric, your stitches will lay flat and if it is too tight it will pull the fabric and pucker up as you sew. Make necessary adjustments before starting this project.



## TAKE YOUR MEASUREMENTS

- MEASURE AROUND YOUR WAIST
- MEASURE FROM YOUR WAIST TO THE LENGTH OF THE SKIRT ( HOW LONG YOU WANT THE SKIRT TO BE )

### Transfer the Measurements

Cut out a rectangle with this dimensions. Make sure the fabric stretches horizontally

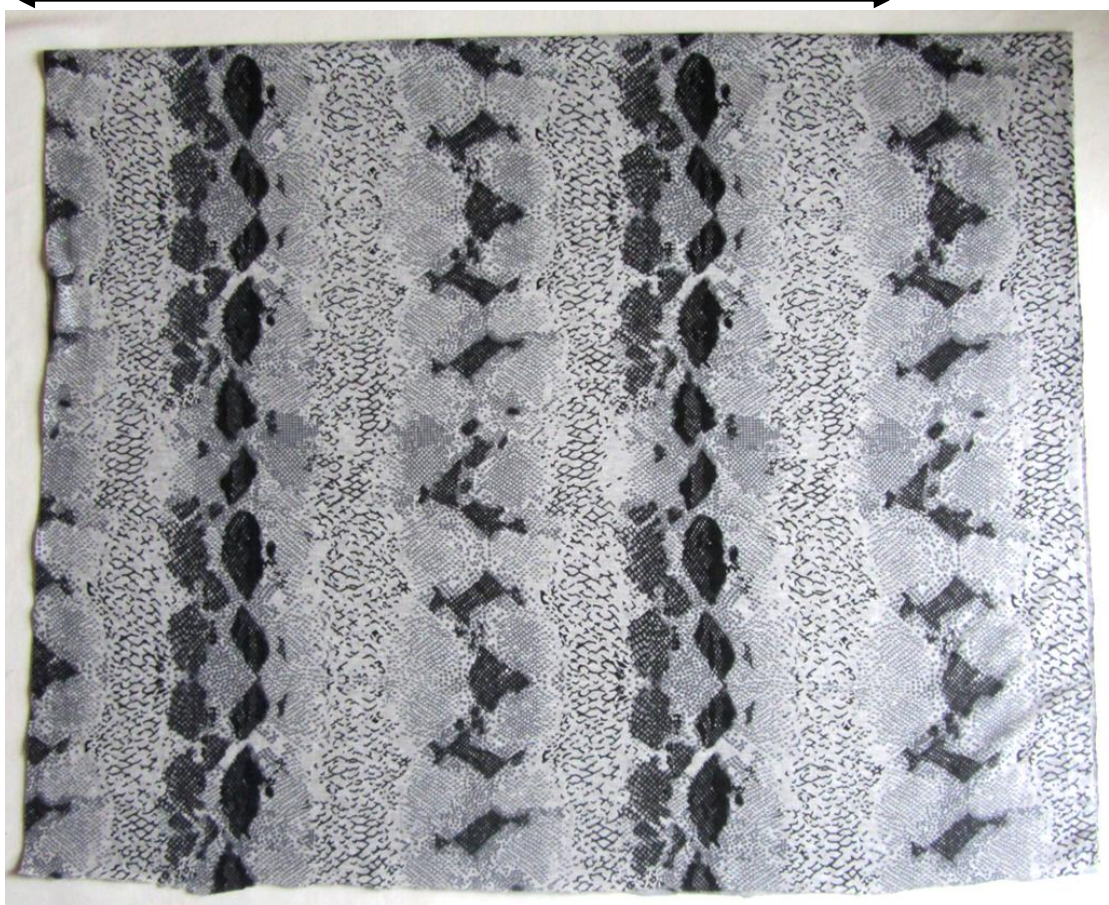
Width=WAIST

Length= WAIST TO LENGHT OF SKIRT

\*\*\* Make sure the stretch is on the width

**The Width = Waist**

**Length =  
Waist to  
length of  
skirt+ 3  
inches**



**Direction of Stretch**

Next fold the fabric in half on the width and cut across the fold



Then cut the fabric on the marked points and unfold



---

## Sewing the skirt

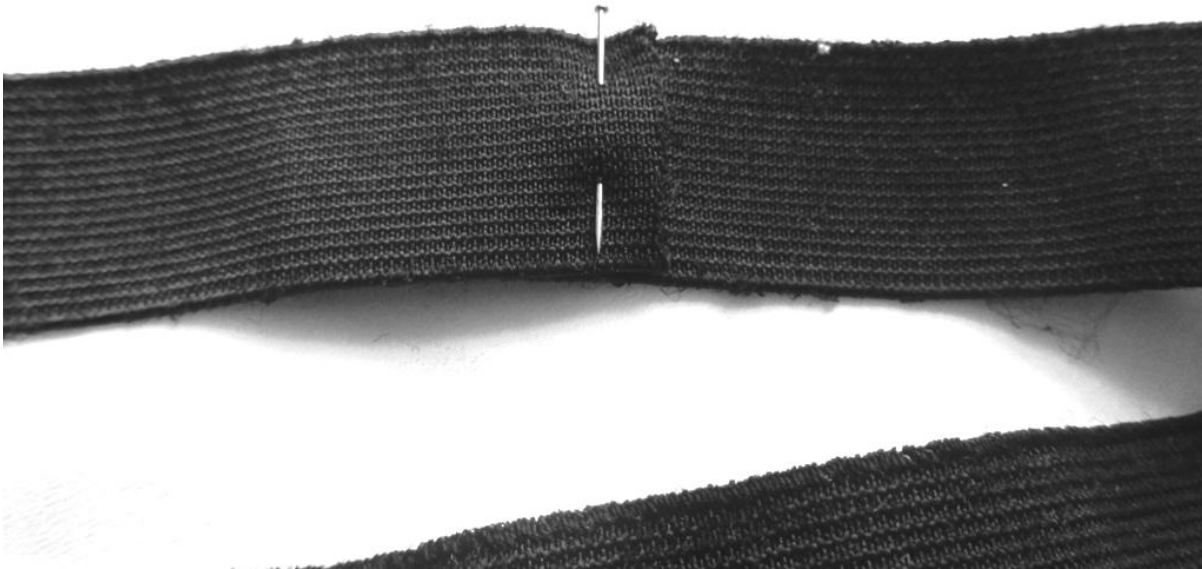
Next place RIGHT SIDES TOGETHER and sew along using a straight stitch the marked lines as shown in the diagram.

\*\* If your cutting was not very straight like mine 😊 try to sew as straight as you can.



Next transfer your waist measurement on the elastic band, remember NO seam allowance because of the stretch.

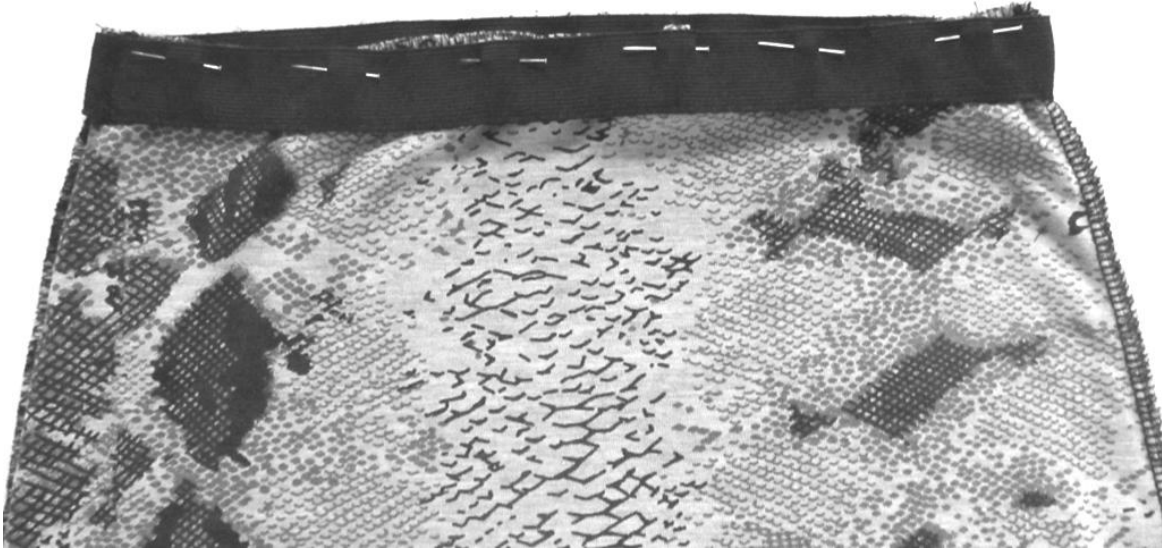
Then overlap 1/2" the ends and pin as shown in the image



Then join using a ZIG ZAG Stitch



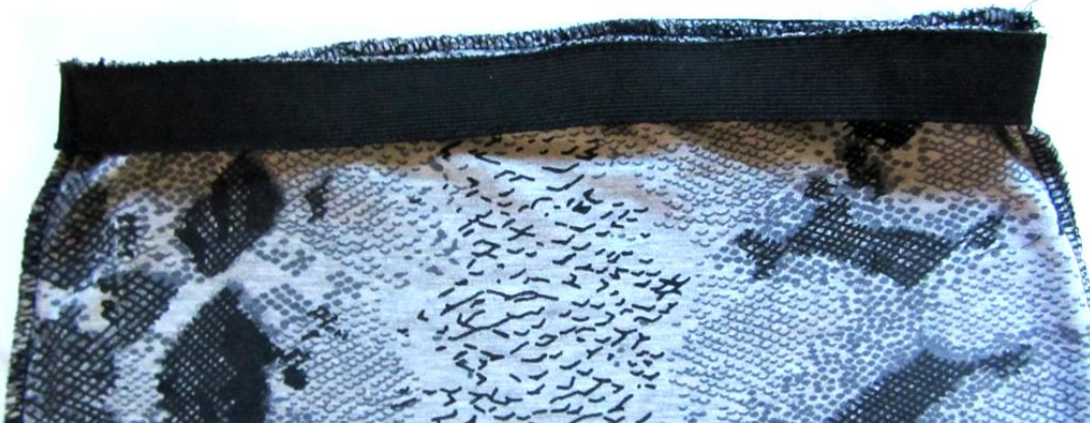
Next place the elastic band on the skirt and pin as shown in the image



Next sew along the top edge with a Zig Zag stitch as shown in the image



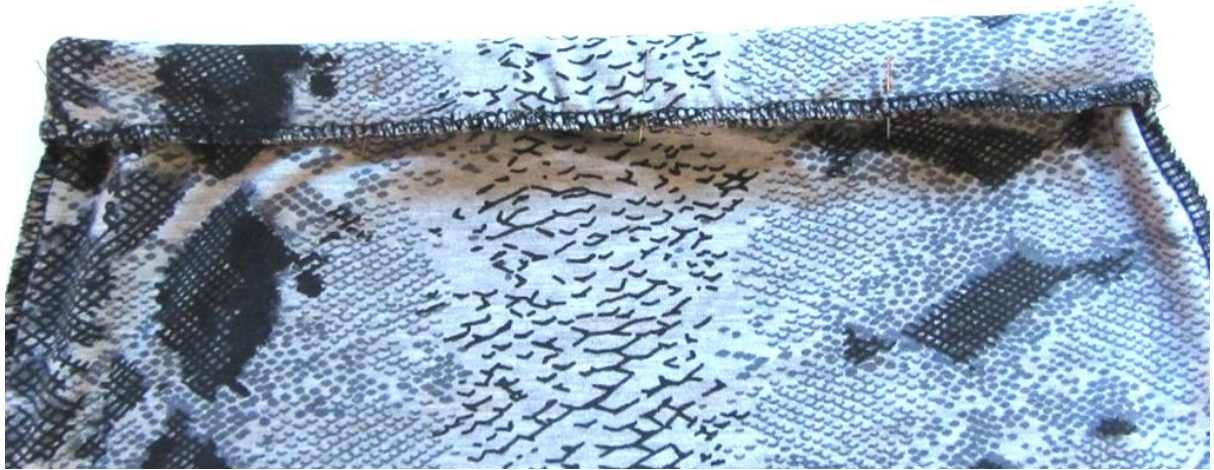
Result



Next fold over ...



And pin down



Then sew around with a ZIG ZAG stitch, as close the edge as possible.



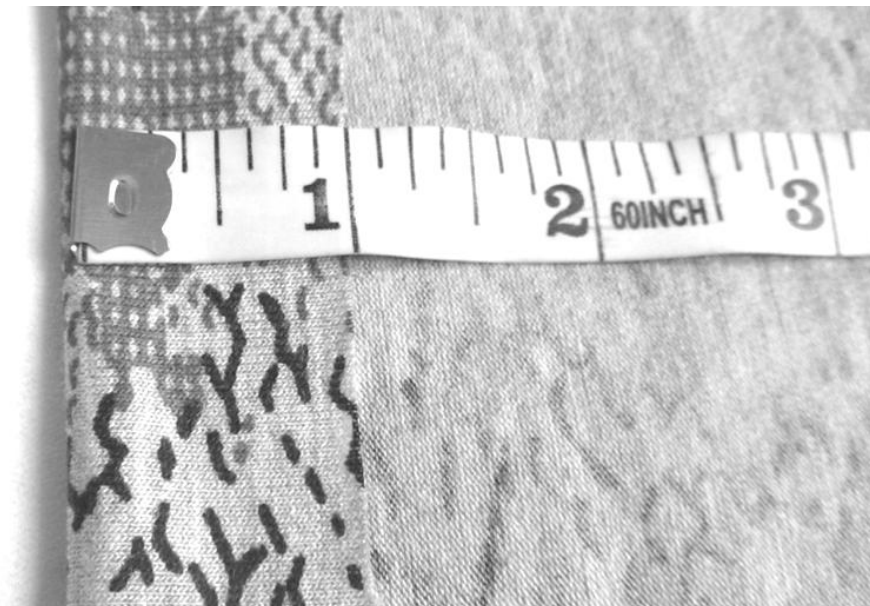


## Result

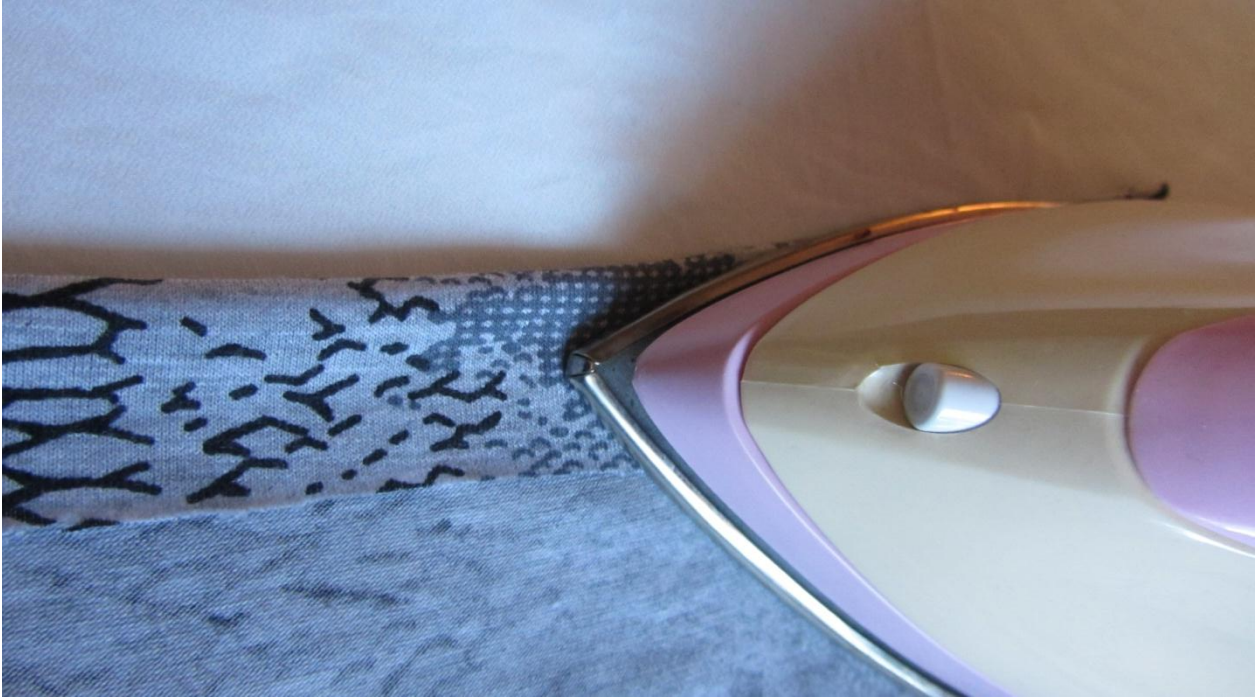


## The HEM

Measure 1inch from the bottom of the Skirt



Then press down



Then Using A Zig zag stitch, sew along the hem as close to the edge as possible





---

## Finishing up

For a professional finish steam press all your seams down

If you have a serger you can overlock or zig zag the raw edges in the skirt but it is not compulsory as Jersey does not fray easily



And Voila you are done 😊



---

## Final Result

---

