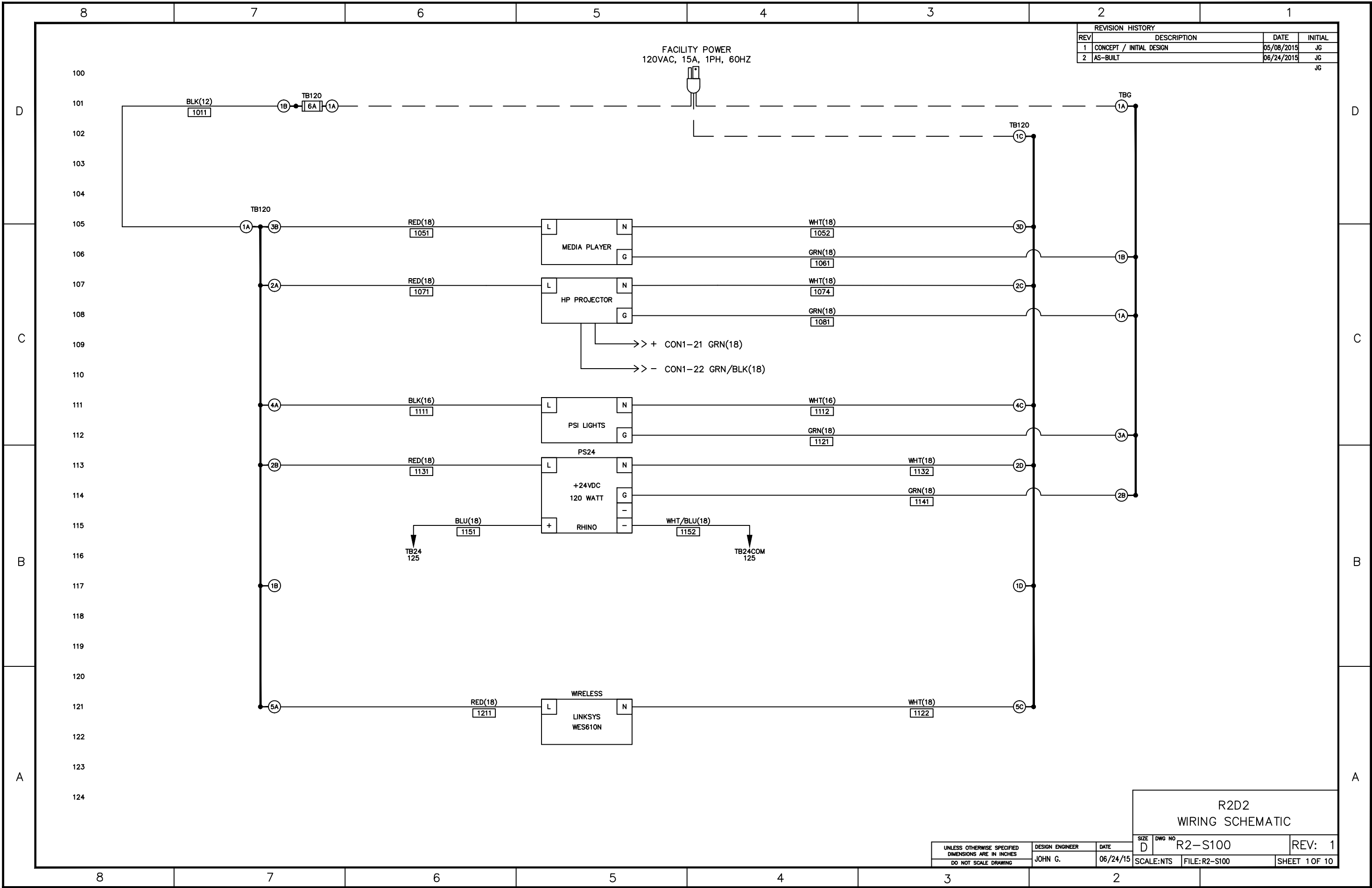


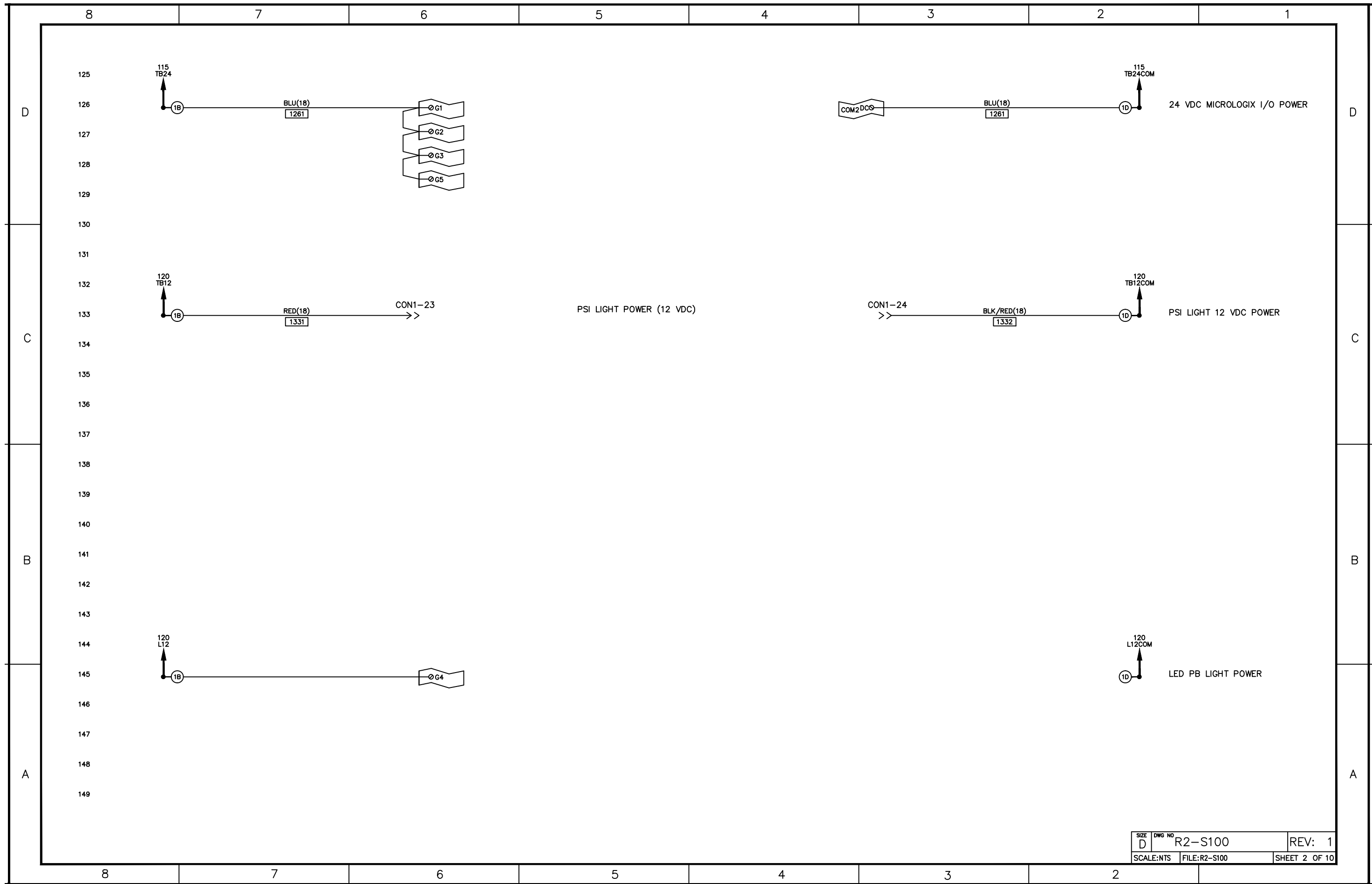
REVISION HISTORY			
REV	DESCRIPTION	DATE	INITIAL
1	CONCEPT / INITIAL DESIGN	05/08/2015	JG
2	AS-BUILT	06/24/2015	JG

FACILITY POWER  
120VAC, 15A, 1PH, 60HZ

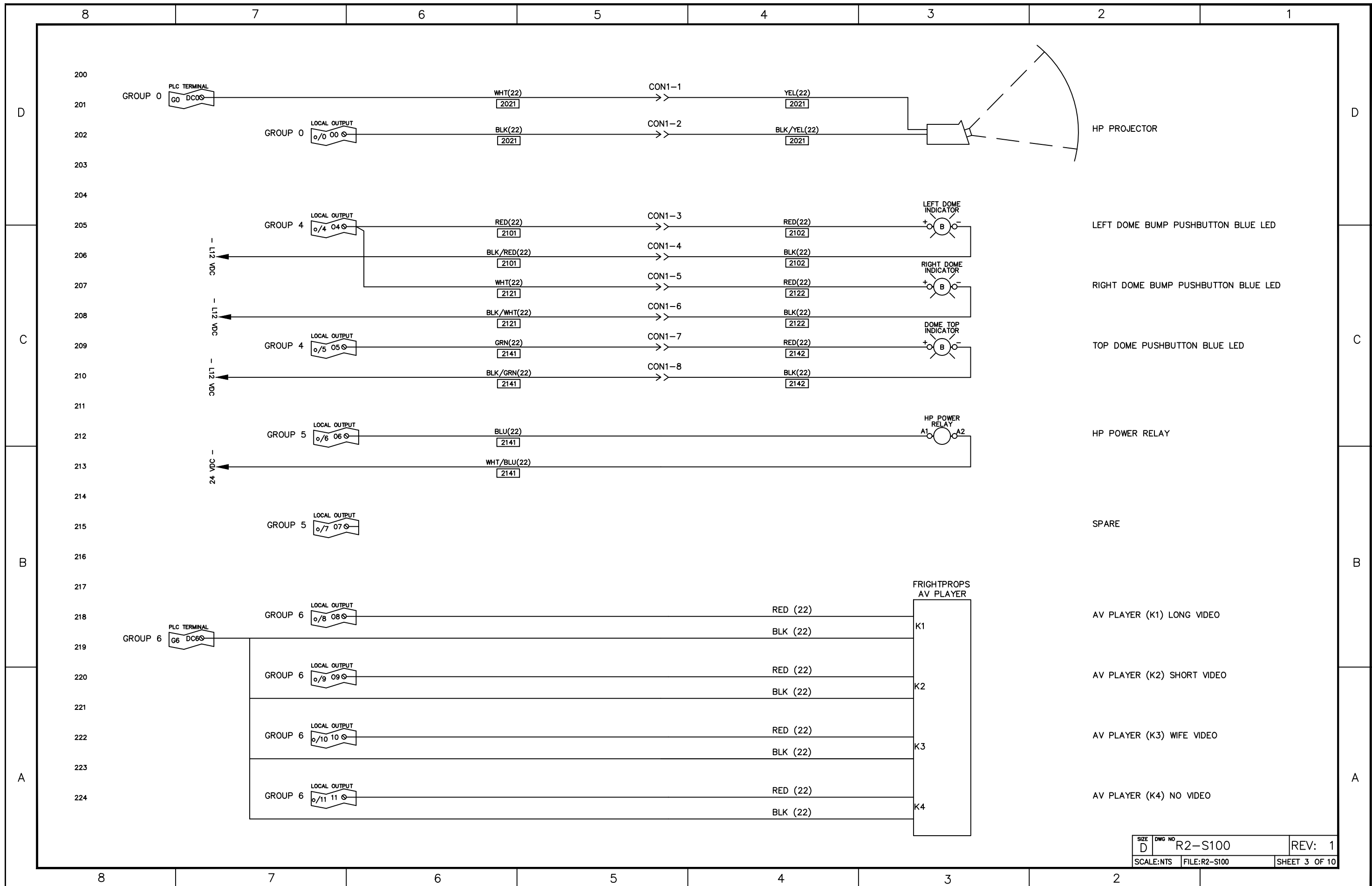


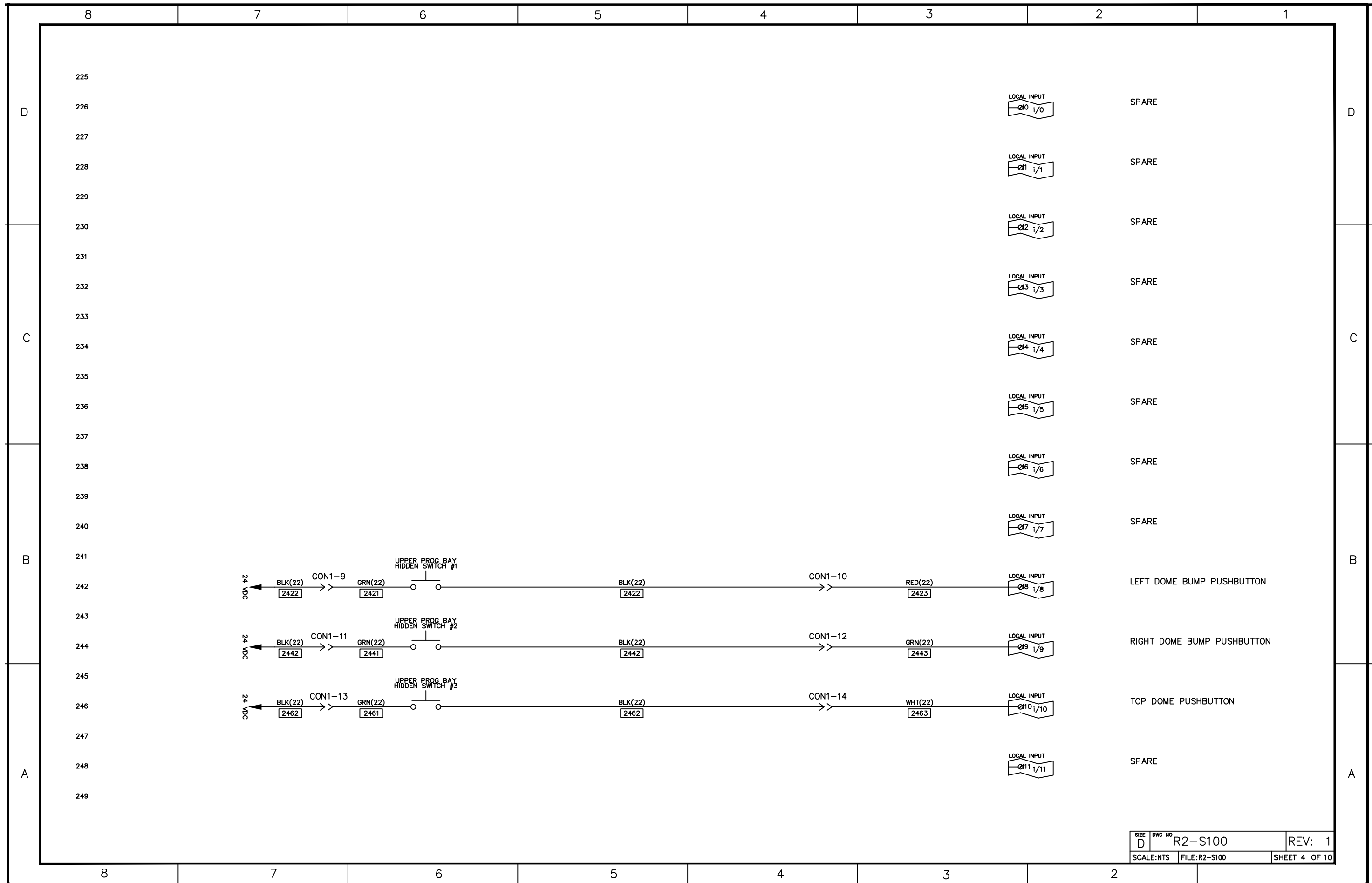
R2D2  
WIRING SCHEMATIC

UNLESS OTHERWISE SPECIFIED DIMENSIONS ARE IN INCHES DO NOT SCALE DRAWING	DESIGN ENGINEER	DATE	SIZE	DWG NO	REV:
	JOHN G.	06/24/15	D	R2-S100	1
			SCALE:NTS	FILE:R2-S100	SHEET 1 OF 10



SIZE D	DWG NO R2-S100	REV: 1
SCALE:NTS	FILE:R2-S100	SHEET 2 OF 10

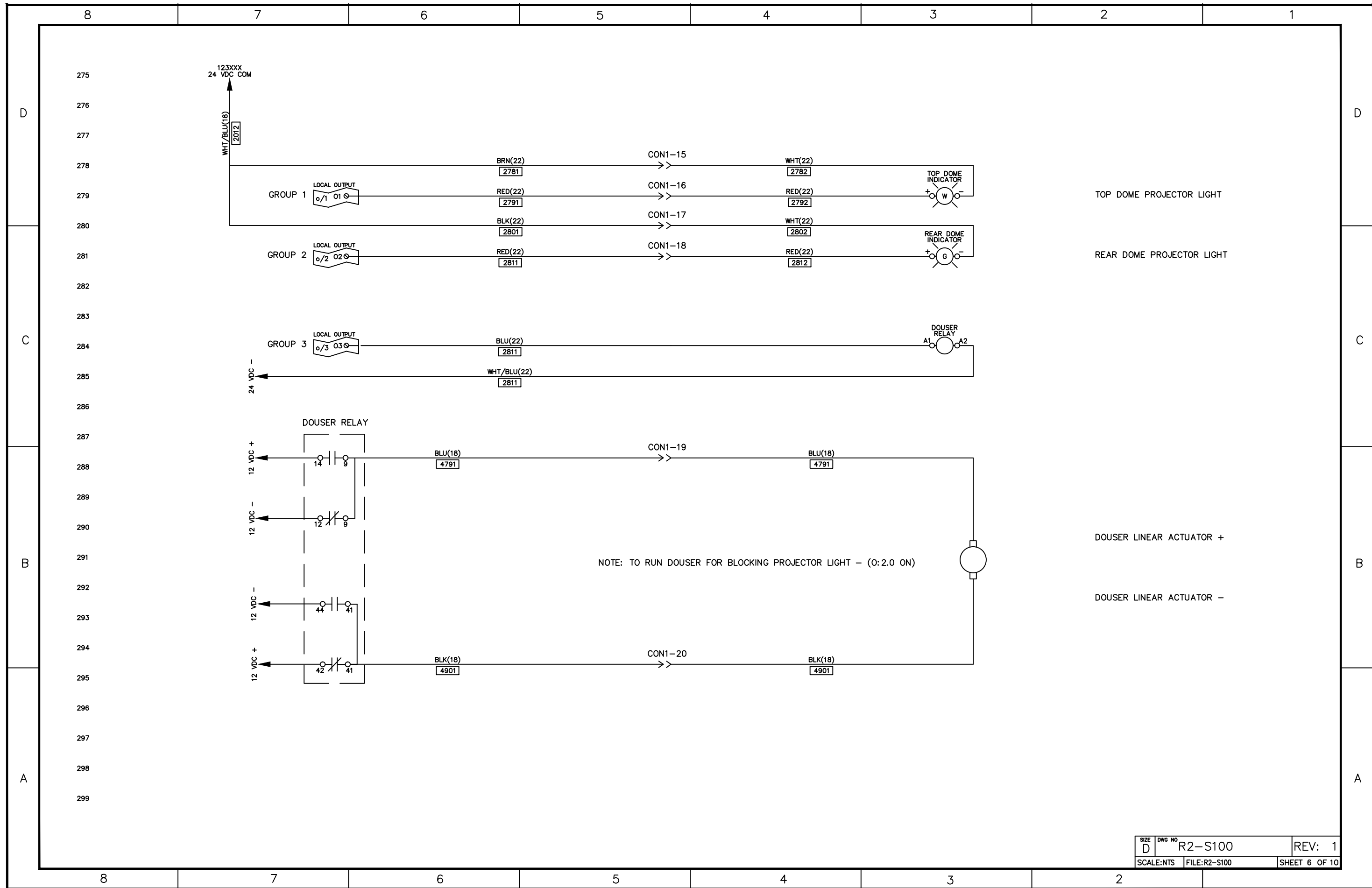


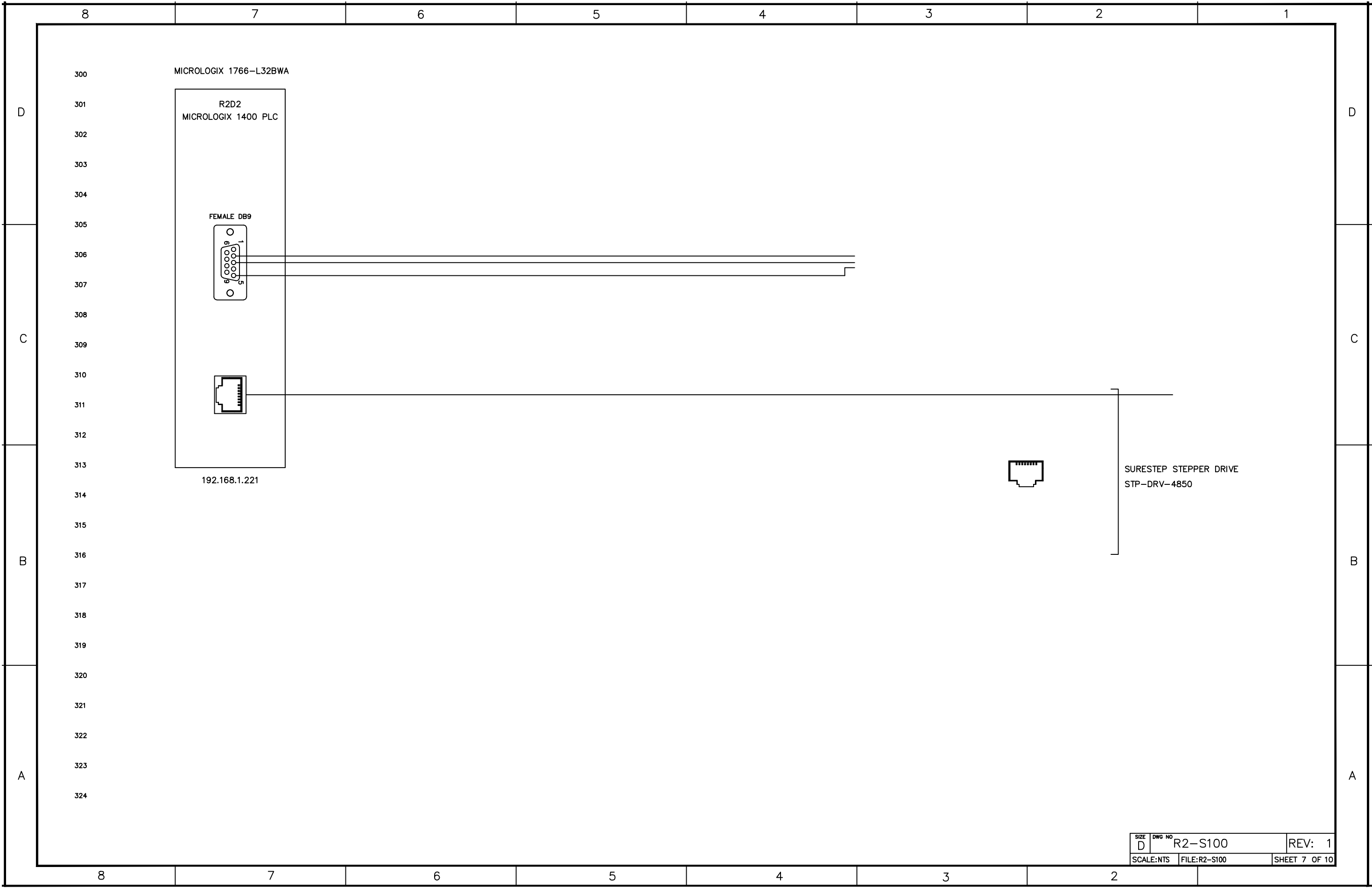


SIZE	DWG NO	REV:
D	R2-S100	1
SCALE:NTS	FILE:R2-S100	SHEET 4 OF 10



SIZE D	DWG NO R2-S100	REV: 1
SCALE:NTS	FILE:R2-S100	SHEET 5 OF 10

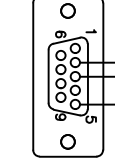




MICROLOGIX 1766-L32BWA

R2D2  
MICROLOGIX 1400 PLC

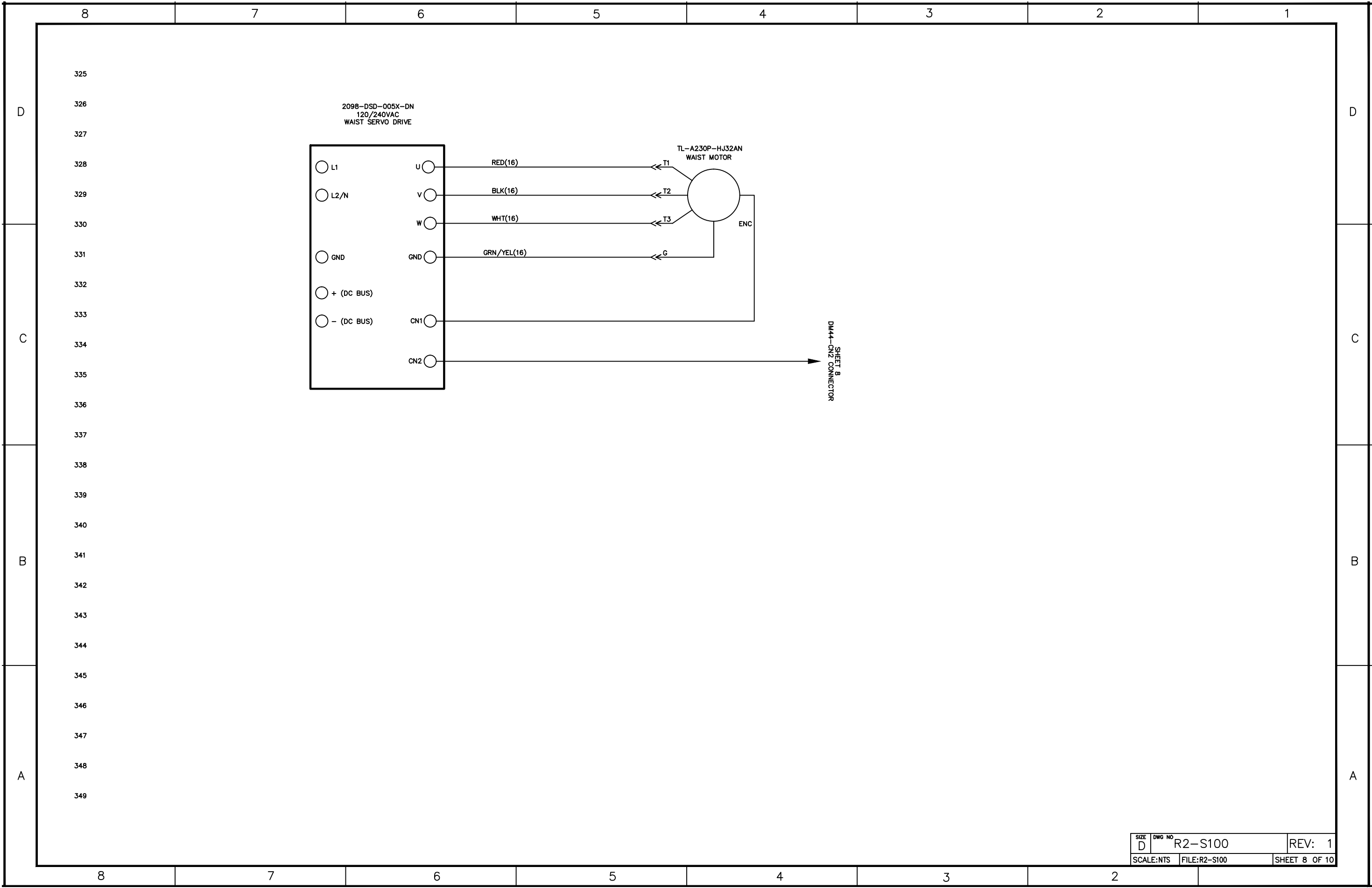
FEMALE DB9



192.168.1.221

SURESTEP STEPPER DRIVE  
STP-DRV-4850

SIZE D	DWG NO R2-S100	REV: 1
SCALE:NTS	FILE:R2-S100	SHEET 7 OF 10



SIZE D	DWG NO R2-S100	REV: 1
SCALE: NTS	FILE: R2-S100	SHEET 8 OF 10



D

D

GROUP	CONNECTOR	i/o POINT	TYPE	BUS	WIRE #	DESCRIPTION
0	-	O:1.0	RELAY	NONE	-	PROJECTOR START
1	-	O:1.1	RELAY	NONE	-	TOP DOME PROJECTOR LIGHT (24 VDC)
2	-	O:1.2	RELAY	NONE	-	REAR DOME PROJECTOR LIGHT (24 VDC)
3	-	O:1.3	RELAY	NONE	-	DOUSER RELAY (ENERGIZED = IN) (24 VDC)
4	-	O:1.4	RELAY	12 VDC	-	LEFT DOME BUMP PUSHBUTTON BLUE LED
4	-	O:1.5	RELAY	12 VDC	-	RIGHT DOME BUMP PUSHBUTTON BLUE LED
5	-	O:1.6	RELAY	12 VDC	-	TOP DOME PUSHBUTTON BLUE LED
5	-	O:1.7	RELAY	NONE	-	SPARE
5	-	O:1.8	RELAY	NONE	2181	AV PLAYER (K1) LONG VIDEO
6	-	O:1.9	RELAY	NONE	2201	AV PLAYER (K2) SHORT VIDEO
6	-	O:1.10	RELAY	NONE	2221	AV PLAYER (K3) WIFE VIDEO
6	-	O:1.11	RELAY	NONE	2241	AV PLAYER (K4) NO VIDEO

C

C

GROUP	CONNECTOR	i/o POINT	TYPE	BUS	WIRE #	DESCRIPTION
0	-	i/0	SINKING	NONE	-	SPARE
0	-	i/1	SINKING	NONE	-	SPARE
0	-	i/2	SINKING	NONE	-	SPARE
0	-	i/3	SINKING	NONE	-	SPARE
1	-	i/4	SINKING	NONE	-	SPARE
1	-	i/5	SINKING	NONE	-	SPARE
1	-	i/6	SINKING	NONE	-	SPARE
1	-	i/7	SINKING	NONE	-	SPARE
2	-	i/8	SINKING	NONE	-	LEFT DOME BUMP PUSHBUTTON
2	-	i/9	SINKING	NONE	-	RIGHT DOME BUMP PUSHBUTTON
2	-	i/10	SINKING	NONE	-	TOP OF DOME PUSHBUTTON
2	-	i/11	SINKING	NONE	-	SPARE
3	-	i/12	SINKING	NONE	-	SPARE
3	-	i/13	SINKING	NONE	-	SPARE
3	-	i/14	SINKING	NONE	-	SPARE
3	-	i/15	SINKING	NONE	-	SPARE
3	-	i/16	SINKING	NONE	-	SPARE
3	-	i/17	SINKING	NONE	-	SPARE
3	-	i/18	SINKING	NONE	-	SPARE
3	-	i/19	SINKING	NONE	-	SPARE

B

B

A

A

8 7 6 5 4 3 2 1

D

D

CONNECTOR	PIN	DESCRIPTION
CN1	1	DC 0 - HP PROJECTOR START
CN1	2	OUTPUT 0 - HP PROJECTOR START
CN1	3	OUTPUT 4 - LEFT DOME BUMP PUSHBUTTON BLUE LED
CN1	4	12 VDC COM
CN1	5	OUTPUT 5 - RIGHT DOME BUMP PUSHBUTTON BLUE LED
CN1	6	12 VDC COM
CN1	7	OUTPUT 6 - TOP DOME PUSHBUTTON BLUE LED
CN1	8	12 VDC COM
CN1	9	LEFT DOME BUMP PUSHBUTTON 24 VDC
CN1	10	LEFT DOME BUMP PUSHBUTTON INPUT 8
CN1	11	RIGHT DOME BUMP PUSHBUTTON 24 VDC
CN1	12	RIGHT DOME BUMP PUSHBUTTON INPUT 9
CN1	13	TOP DOME BUMP PUSHBUTTON 24 VDC
CN1	14	TOP DOME BUMP PUSHBUTTON INPUT 10
CN1	15	24 VDC COM
CN1	16	OUTPUT 1 - TOP DOME PROJECTOR LIGHT
CN1	17	24 VDC COM
CN1	18	OUTPUT 2 - REAR DOME PROJECTOR LIGHT
CN1	19	DOUSER VOLTAGE
CN1	20	DOUSER VOLTAGE
CN1	21	PROJECTOR POWER +
CN1	22	PROJECTOR POWER -
CN1	23	PSI LIGHT 12 VDC POWER +
CN1	24	PSI LIGHT 12 VDC POWER -

C

C

B

B

A

A

8 7 6 5 4 3 2 1