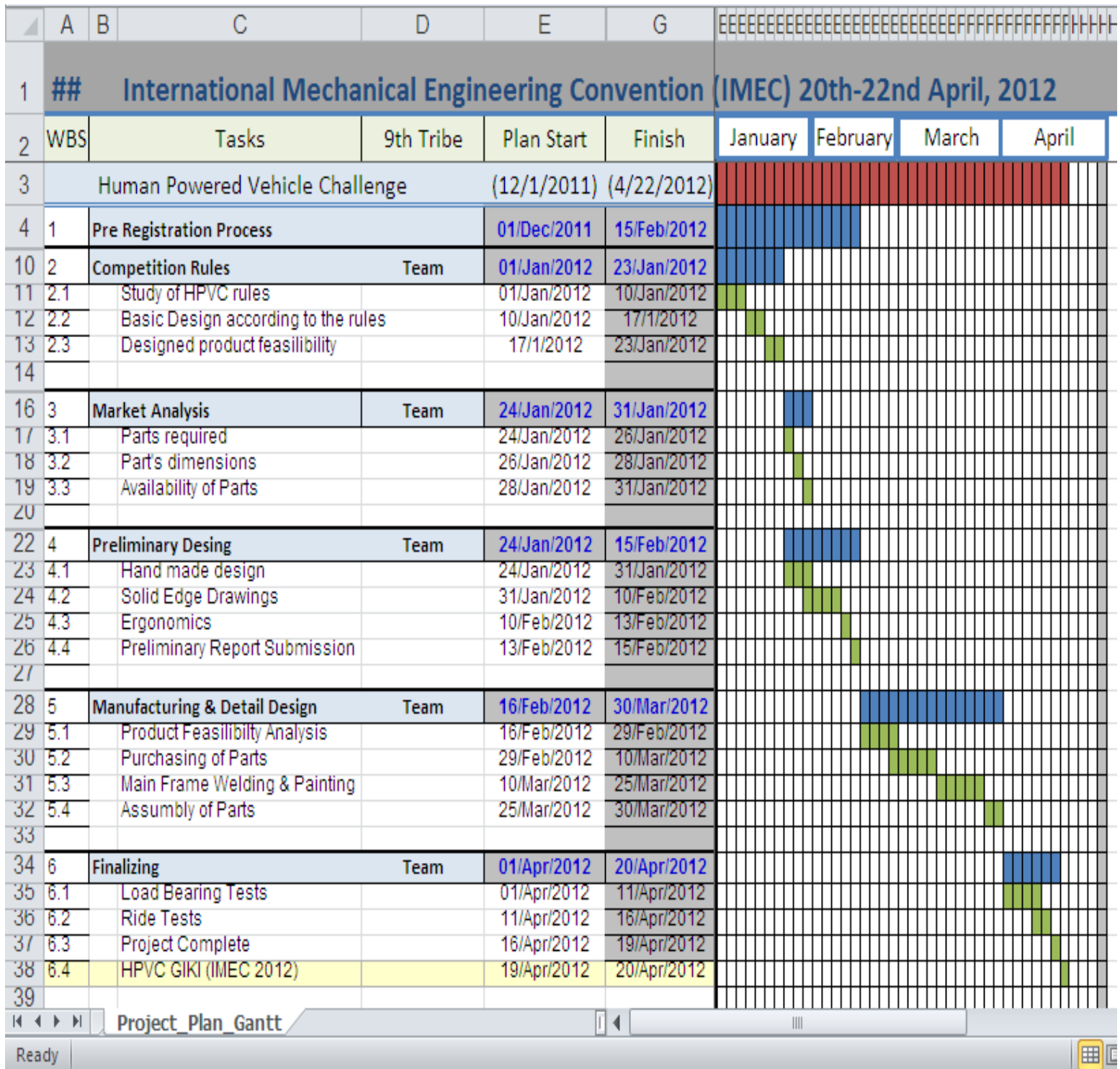


RECUMBENT TADPOLE TRIKE PROJECT

Project Time Line

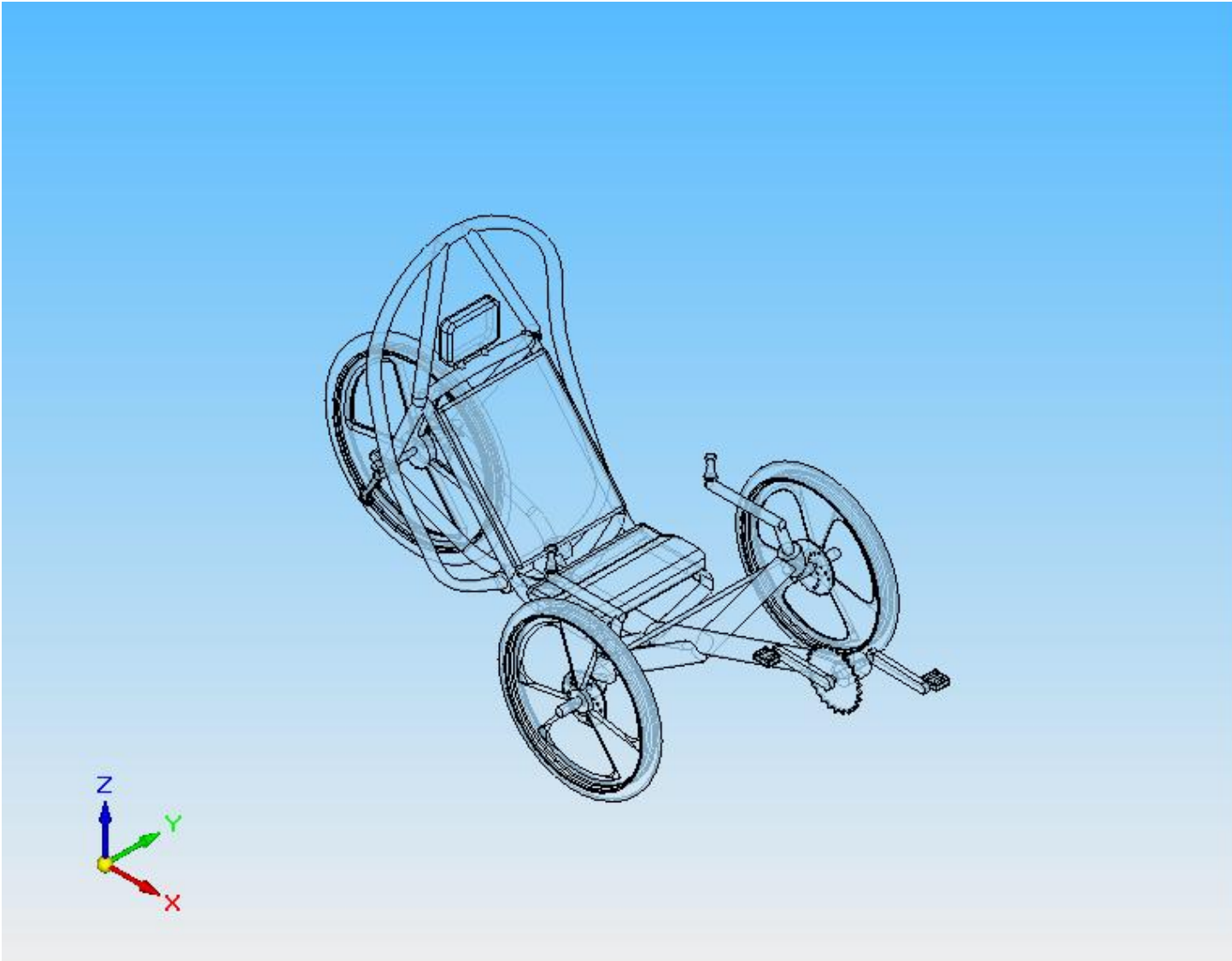


Design Details

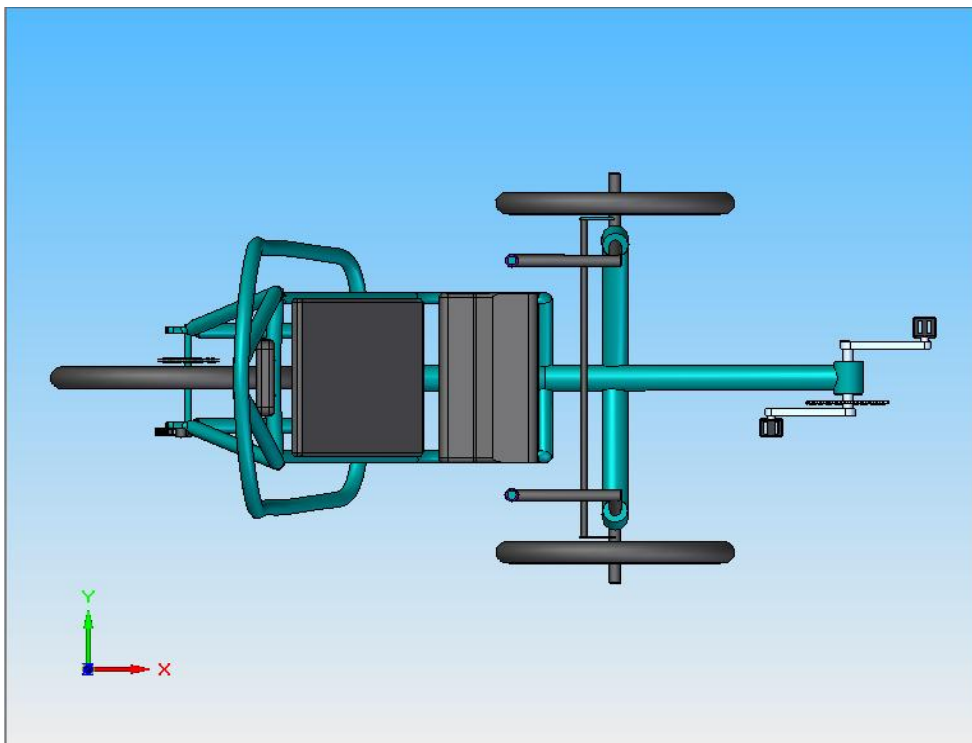
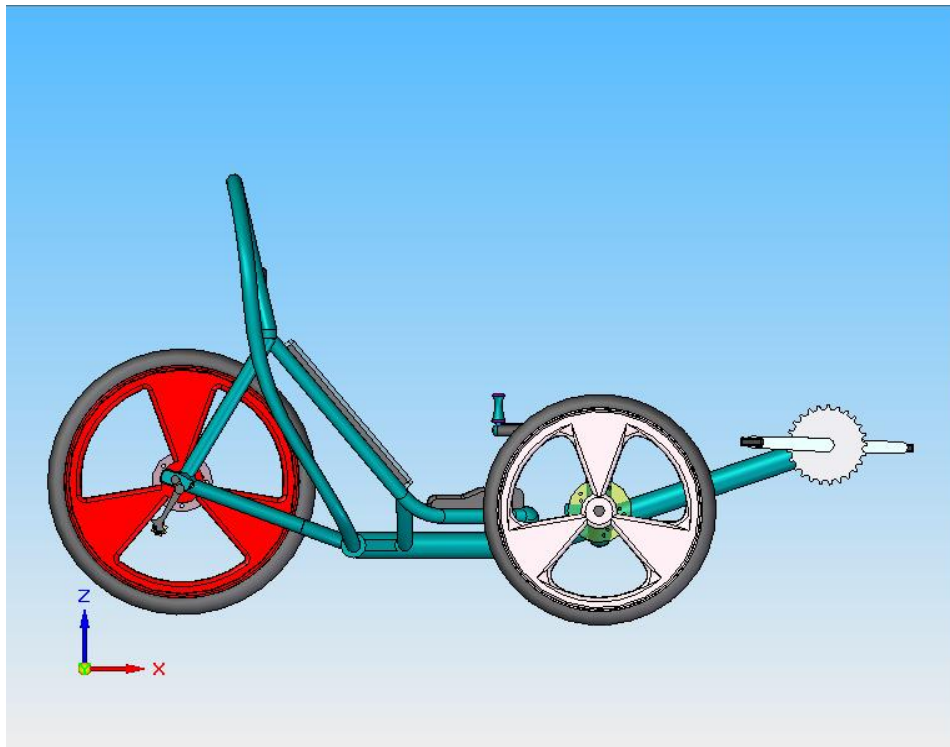
Following are the 3-D and 2-D views of our design

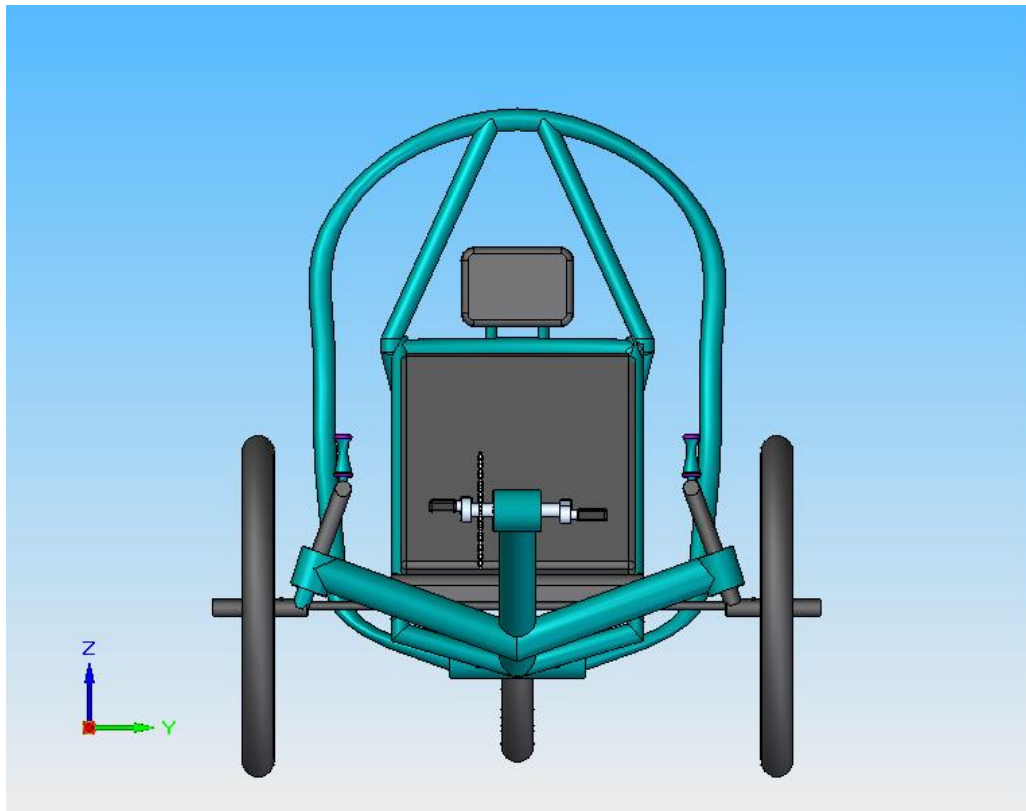
3-D views



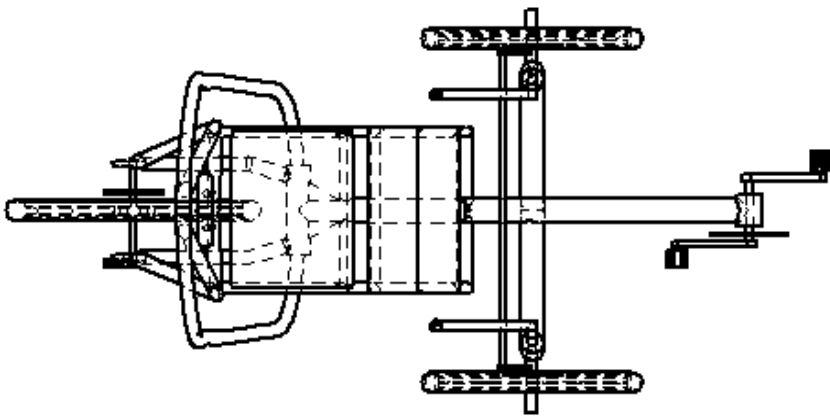
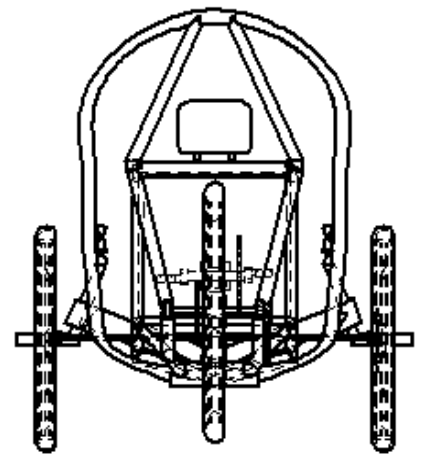
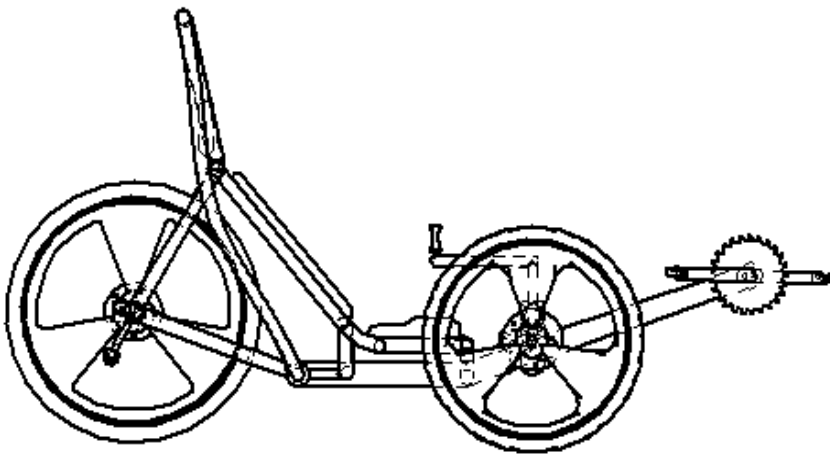


2-D Views





2-D Views



5.3 Design specifications

Following are the design specifications of Tadpole trike

(Scale 10:1)

- Material Used = Carbon Steel
- Total height of vehicle= 41.57"(3' 5")
- Total width= 33"(2' 8")
- Wheel track= 27.8"(2' 3")
- Wheel base= 39"(3' 3")

- Front wheel diameter= 2.0"
- Rear wheel diameter= 2.4"

- Back rest length of chair= 2.4"
- Head rest of chair= 0.568"
- Back rest angle = 40°
- Seat Width = 1.7"
- Height of head rest= 30"(2' 6")

- Caster angle from horizontal = 12°
- King pin inclination= 17°
- Chamber angle from vertical= 0°

- Brake System= Disc Brakes