

Rhombi Cushion 1

This cushion was inspired by the Rhombi Scarf designed by Margaret Kendall. The main motif is based on 'The Elongated Diamond Pattern' from a 'Treasury of Knitting Patterns' by Barbara G Walker.

Materials:

I recommend an Aran, heavy worsted weight yarn or 12Ply with 5.5mm needles. I used approximately 145g of 4 Seasons, Marvel, 12ply (approx 300m)

Tapestry needle for sewing in ends.

Cushion pad to match size of finished piece. For this I used a 40cm x 40cm cushion pad. Alternatively you could use hobby fill toy stuffing, and stuff your cushion to desired firmness

Finished Dimensions:

The dimensions will depend on the weight of yarn, and the needle size used.

My example was knit with 12Ply yarn on 5.5mm needles,

With garter stitch border after blocking – 40cm x 90cm

Gauge:

Will differ depending on yarn weight and needle size.

My example had a gauge of 17 stitches and 22 rows over 10cm in stocking stitch

Notes:

The pattern is in both written and chart form. Charts can be found at the end of the written pattern.

For charts, begin with row 1 at the top of the chart.

Right side (odd numbered) are read from right to left

Wrong side (even numbered) are read from left to right.

Written instructions and charts include a 3 stitch garter border on each edge.

Rhombi Cushion 1

Instructions:

Cast on 57 stitches

Knit 8 Rows to form Garter stitch border

Work pattern, as written/charted.

Knit 8 Rows to form Garter stitch border.




Cast off.

Weave in any ends. Block if required.

Fold finished fabric in half, seam the cast of and cast on edge together, place cushion pad in centre and seam across the edges.

Sew in ends.

Chart Key:

<u>KEY</u>	
	Garter Stitch Border
	Knit of RS / Purl on WS (Odd numbered rows)
	Purl of RS / Knit on WS (Even numbered rows)

Rhombi Cushion 1

Written Instructions:

Pattern

Rows 1 to 8

Knit all Stitches

Row 9

K3, P2, K4, P2, K2, P1, K5, (P2, K2)twice, P1, K1, P1, (K2, P2)twice, K5, P1, K2, P2, K4, P2, K3

Row 10

K5, (P1, K2)twice, P2, K1, P1, K3, P1, (K2, P2)twice, K1, P1, K1, (P2, K2)twice, P1, K3, P1, K1, P2, (K2, P1)twice, K5

Row 11

K3, P2, K4, P1, K2, P2, K5, P1, (K2, P2)twice, K1, (P2, K2)twice, P1, K5, P2, K2, P1, K4, P2, K3

Row 12

K5, P1, K2, P1, K1, P2, K2, P1, K3, P1, K1, (P2, K2)twice, P1, (K2, P2)twice, K1, P1, K3, P1, K2, P2, K1, P1, K2, P1, K5

Row 13

K8, P2, K2, P1, K5, (P2, K2)twice, P1, K3, P1, (K2, P2)twice, K5, P1, K2, P2, K8

Row 14

K7, P1, K2, P2, K1, P1, K3, P1, (K2, P2)twice, K1, P3, K1, (P2, K2)twice, P1, K3, P1, K1, P2, K2, P1, K7

Row 15

K8, P1, K2, P2, K5, P1, (K2, P2)twice, K3, (P2, K2)twice, P1, K5, P2, K2, P1, K8

Row 16

K7, P1, K1, P2, K2, P1, K3, P1, K1, (P2, K2)twice, P3, (K2, P2)twice, K1, P1, K3, P1, K2, P2, K1, P1, K7

Row 17

K7, P2, K2, P1, K5, (P2, K2)twice, (P1, K2)three times, P2, K2, P2, K5, P1, K2, P2, K7

Row 18

K6, P1, K2, P2, K1, P1, K3, P1, (K2, P2)twice, (K1, P2)three times, K2, P2, K2, P1, K3, P1, K1, P2, K2, P1, K6

Row 19

K7, P1, K2, P2, K5, P1, (K2, P2)twice, K2, P1, (K2, P2)twice, K2, P1, K5, P2, K2, P1, K7

Rhombi Cushion 1

Row 20

K6, P1, K1, P2, K2, P1, K3, P1, K1, (P2, K2)twice, P2, K1, (P2, K2)twice, P2, K1, P1, K3, P1, K2, P2, K1, P1, K6

Row 21

K6, P2, K2, P1, K5, (P2, K2)twice, P1, K2, P3, K2, P1, (K2, P2)twice, K5, P1, K2, P2, K6

Row 22

K5, P1, K2, P2, K1, P1, K3, P1, (K2, P2)twice, K1, P2, K3, P2, K1, (P2, K2)twice, P1, K3, P1, K1, P2, K2, P1, K5

Row 23

K6, P1, K2, P2, K5, P1, (K2, P2)twice, K2, P1, K1, P1, K2, (P2, K2)twice, P1, K5, P2, K2, P1, K6

Row 24

K5, P1, K1, P2, K2, P1, K3, P1, K1, (P2, K2)twice, P2, K1, P1, K1, P2, (K2, P2)twice, K1, P1, K3, P1, K2, P2, K1, P1, K5

Row 25

K5, P2, K2, P1, K5, (P2, K2)twice, P1, K2, P2, K1, P2, K2, P1, (K2, P2)twice, K5, P1, K2, P2, K5

Row 26

K3, P2, K2, P2, K1, P1, K3, P1, (K2, P2)twice, K1, P2, K2, P1, K2, P2, K1, (P2, K2)twice, P1, K3, P1, K1, P2, K2, P2, K3

Row 27

K5, P1, K2, P2, K5, P1, (K2, P2)twice, K2, (P1, K1)twice, P1, K2, (P2, K2)twice, P1, K5, P2, K2, P1, K5

Row 28

K3, P2, K1, P2, K2, P1, K3, P1, K1, (P2, K2)twice, P2, K1, P3, K1, (P2, K2)twice, P2, K1, P1, K3, P1, K2, P2, K1, P2, K3

Row 29

K3, P3, K2, P1, K5, (P2, K2)twice, P1, K2, P2, K1, P1, K1, P2, K2, P1, (K2, P2)twice, K5, P1, K2, P3, K3

Row 30

K6, P2, K1, P1, K3, P1, (K2, P2)twice, K1, P2, K2, P3, K2, P2, K1, (P2, K2)twice, P1, K3, P1, K1, P2, K6

Row 31

K3, P2, K2, P2, K5, P1, (K2, P2)twice, K2, P1, K1, P3, K1, P1, K2, (P2, K2)twice, P1, K5, P2, K2, P2, K3

Row 32

K5, P2, K2, P1, K3, P1, K1, (P2, K2)twice, P2, K1, P5, K1, P2, (K2, P2)twice, K1, P1, K3, P1, K2, P2, K5

Rhombi Cushion 1

Row 33

K3, P2, K2, P1, K5, (P2, K2)twice, P1, K2, P2, K1, P3, K1, P2, K2, P1, (K2, P2)twice, K5, P1, K2, P2, K3

Row 34

K5, P2, K1, P1, K3, P1, (K2, P2)twice, K1, P2, K2, P5, K2, P2, K1, (P2, K2)twice, P1, K3, P1, K1, P2, K5

Row 35

K6, P2, K5, P1, (K2, P2)twice, K2, P1, K1, P5, K1, P1, (K2, P2)twice, K2, P1, K5, P2, K6

Row 36

K3, P3, K2, P1, K3, P1, K1, (P2, K2)twice, P2, K1, P7, K1, (P2, K2)twice, P2, K1, P1, K3, P1, K2, P3, K3

Row 37

K6, P1, K5, (P2, K2)twice, P1, K2, P2, K1, P5, K1, P2, K2, P1, (K2, P2)twice, K5, P1, K6

Row 38

K3, P3, K1, P1, K3, P1, (K2, P2)twice, K1, P2, K2, P7, K2, P2, K1, (P2, K2)twice, P1, K3, P1, K1, P3, K3

Row 39

K5, P2, K5, P1, (K2, P2)twice, K2, P1, K1, P7, K1, P1, (K2, P2)twice, K2, P1, K5, P2, K5

Row 40

K3, P2, K2, P1, K3, P1, K1, (P2, K2)twice, P2, K1, P9, K1, (P2, K2)twice, P2, K1, P1, K3, P1, K2, P2, K3

Row 41

K5, P1, K5, (P2, K2)twice, P1, K2, P2, K1, P7, K1, P2, K2, P1, (K2, P2)twice, K5, P1, K5

Row 42

K3, P2, K1, P1, K3, P1, (K2, P2)twice, K1, P2, K2, P9, K2, P2, K1, (P2, K2)twice, P1, K3, P1, K1, P2, K3

Row 43

K3, P3, K5, P1, (K2, P2)twice, K2, P1, K1, P3, K1, P1, K1, P3, K1, P1, (K2, P2)twice, K2, P1, K5, P3, K3

Row 44

K6, P1, K3, P1, K1, (P2, K2)twice, P2, (K1, P5)twice, K1, (P2, K2)twice, P2, K1, P1, K3, P1, K6

Row 45

K3, P2, K5, (P2, K2)twice, P1, K2, P2, K1, P3, K1, P1, K1, P3, K1, P2, K2, P1, (K2, P2)twice, K5, P2, K3

Row 46

K5, P1, K3, P1, (K2, P2)twice, K1, P2, K2, P5, K1, P5, K2, P2, K1, (P2, K2)twice, P1, K3, P1, K5

Rhombi Cushion 1

Row 47

K3, P2, K5, P1, (K2, P2)twice, K2, P1, (K1, P3)three times, K1, P1, (K2, P2)twice, K2, P1, K5, P2, K3

Row 48

K5, P1, K3, P1, K1, (P2, K2)twice, P2, K1, P5, K3, P5, K1, (P2, K2)twice, P2, K1, P1, K3, P1, K5

Row 49

K9, (P2, K2)twice, P1, K2, P2, K1, P3, K1, (P1, K1)twice, P3, K1, P2, K2, P1, (K2, P2)twice, K9

Row 50

K8, P1, (K2, P2)twice, K1, P2, K2, P5, K1, P1, K1, P5, K2, P2, K1, (P2, K2)twice, P1, K8

Row 51

K9, P1, (K2, P2)twice, K2, P1, K1, P3, K1, (P2, K1)twice, P3, K1, P1, (K2, P2)twice, K2, P1, K9

Row 52

K8, P1, K1, (P2, K2)twice, P2, K1, P5, K2, P1, K2, P5, K1, (P2, K2)twice, P2, K1, P1, K8

Row 53

K8, (P2, K2)twice, P1, K2, P2, K1, P3, K1, P1, K3, P1, K1, P3, K1, P2, K2, P1, (K2, P2)twice, K8

Row 54

K7, P1, (K2, P2)twice, K1, P2, K2, P5, K1, P3, K1, P5, K2, P2, K1, (P2, K2)twice, P1, K7

Row 55

K8, P1, (K2, P2)twice, K2, P1, K1, P3, K1, P2, K3, P2, K1, P3, K1, P1, (K2, P2)twice, K2, P1, K8

Row 56

K7, P1, K1, (P2, K2)twice, P2, K1, P5, K2, P3, K2, P5, K1, (P2, K2)twice, P2, K1, P1, K7

Row 57

K7, (P2, K2)twice, P1, K2, P2, K1, P3, K1, (P1, K2)twice, P1, K1, P3, K1, P2, K2, P1, (K2, P2)twice, K7

Row 58

K6, P1, (K2, P2)twice, K1, P2, K2, P5, (K1, P2)twice, K1, P5, K2, P2, K1, (P2, K2)twice, P1, K6

Row 59

K7, P1, (K2, P2)twice, K2, P1, K1, P3, K1, P2, K2, P1, K2, P2, K1, P3, K1, P1, (K2, P2)twice, K2, P1, K7

Row 60

K6, P1, K1, (P2, K2)twice, P2, K1, P5, K2, P2, K1, P2, K2, P5, K1, (P2, K2)twice, P2, K1, P1, K6

Rhombi Cushion 1

Row 61

K6, (P2, K2)twice, P1, K2, P2, K1, P3, K1, P1, K2, P3, K2, P1, K1, P3, K1, P2, K2, P1, (K2, P2)twice, K6

Row 62

K5, P1, (K2, P2)twice, K1, P2, K2, P5, K1, P2, K3, P2, K1, P5, K2, P2, K1, (P2, K2)twice, P1, K5

Row 63

K6, P1, (K2, P2)twice, K2, P1, K1, P3, K1, P2, K2, P1, K1, P1, K2, P2, K1, P3, K1, P1, (K2, P2)twice, K2, P1, K6

Row 64

K5, P1, K1, (P2, K2)twice, P2, K1, P5, K2, P2, K1, P1, K1, P2, K2, P5, K1, (P2, K2)twice, P2, K1, P1, K5

Row 65

K5, (P2, K2)twice, P1, K2, P2, K1, P3, K1, P1, K2, P2, K1, P2, K2, P1, K1, P3, K1, P2, K2, P1, (K2, P2)twice, K5

Row 66

K3, P2, (K2, P2)twice, K1, P2, K2, P5, K1, P2, K2, P1, K2, P2, K1, P5, K2, P2, K1, (P2, K2)twice, P2, K3

Row 67

K5, P1, (K2, P2)twice, K2, P1, K1, P3, K1, P2, K2, (P1, K1)twice, P1, K2, P2, K1, P3, K1, P1, K2, (P2, K2)twice, P1, K5

Row 68

K3, P2, K1, (P2, K2)twice, P2, K1, P5, K2, P2, K1, P3, K1, P2, K2, P5, K1, P2, (K2, P2)twice, K1, P2, K3

Row 69

K3, P3, K2, P2, K2, P1, K2, P2, K1, P3, K1, P1, K2, P2, K1, P1, K1, P2, K2, P1, K1, P3, K1, P2, K2, P1, K2, P2, K2, P3, K3

Row 70

K6, P2, K2, P2, K1, P2, K2, P5, K1, P2, K2, P3, K2, P2, K1, P5, K2, P2, K1, P2, K2, P2, K6

Row 71

K3, (P2,K2)three times, P1, K1, P3, K1, P2, K2, P1, K1, P3, K1, P1, K2, P2, K1, P3, K1, P1, (K2, P2)three times, K3

Row 72

K5, (P2,K2)twice, P2, K1, P5, K2, P2, K1, P5, K1, P2, K2, P5, K1, P2, (K2, P2)twice, K5

Row 73

K3, (P2, K2)twice, P1, K2, P2, K1, P3, K1, P1, K2, P2, K1, P3, K1, P2, K2, P1, K1, P3, K1, P2, K2, P1, (K2, P2)twice, K3

© Louise Hilton 2016 – All Rights Reserved

This pattern is intended for personal, non-commercial, not for profit use. You may not sell, share, or distribute this pattern in any format, including print or electronic form.

Rhombi Cushion 1

Row 74

K5, P2, K2, P2, K1, P2, K2, P5, K1, P2, K2, P5, K2, P2, K1, P5, K2, P2, K1, P2, K2, P2, K5,

Row 75

K6, (P2, K2)twice, P1, K1, P3, K1, P2, K2, P1, K1, P5, K1, P1, K2, P2, K1, P3, K1, P1, (K2, P2)twice, K6

Row 76

K3, P3, (K2, P2)twice, K1, P5, K2, P2, K1, P7, K1, P2, K2, P5, K1, (P2, K2)twice, P3, K3

Row 77

K6, P2, K2, P1, K2, P2, K1, P3, K1, P1, K2, P2, K1, P5, K1, P2, K2, P1, K1, P3, K1, P2, K2, P1, K2, P2, K6

Row 78

K3, P3, K2, P2, K1, P2, K2, P5, K1, P2, K2, P7, K2, P2, K1, P5, K2, P2, K1, P2, K2, P3, K3

Row 79

K5, (P2, K2)twice, P1, K1, P3, K1, P2, K2, P1, K1, P7, K1, P1, K2, P2, K1, P3, K1, P1, (K2, P2)twice, K5

Row 80

K3, P2, (K2, P2)twice, K1, P5, K2, P2, K1, P9, K1, P2, K2, P5, K1, (P2, K2)twice, P2, K3

Row 81

K5, P2, K2, P1, K2, P2, K1, P3, K1, P1, K2, P2, K1, P7, K1, P2, K2, P1, K1, P3, K1, P2, K2, P1, K2, P2, K5

Row 82

K3, P2, K2, P2, K1, P2, K2, P5, K1, P2, K2, P9, K2, P2, K1, P5, K2, P2, K1, P2, K2, P2, K3

Row 83

K3, P3, K2, P2, K2, P1, K1, P3, K1, P2, K2, P1, K1, P3, K1, P1, K1, P3, K1, P1, K2, P2, K1, P3, K1, P1, K2, P2, K2, P3, K3

Row 84

K6, P2, K2, P2, K1, P5, K2, P2, (K1, P5)twice, K1, P2, K2, P5, K1, P2, K2, P2, K6

Row 85

K3, P3, K2, P1, K2, P2, K1, P3, K1, P1, K2, P2, K1, P3, K1, P1, K1, P3, K1, P2, K2, P1, K1, P3, K1, P2, K2, P1, K2, P3, K3

Row 86

K6, P2, K1, P2, K2, P5, K1, P2, K2, P5, K1, P5, K2, P2, K1, P5, K2, P2, K1, P2, K6

Rhombi Cushion 1

Row 87

K3, (P2, K2)twice, P1, K1, P3, K1, P2, K2, P1, (K1, P3)three times, K1, P1, K2, P2, K1, P3, K1, P1, (K2, P2)twice, K3

Row 88

K5, P2, K2, P2, K1, P5, K2, P2, K1, P5, K3, P5, K1, P2, K2, P5, K1, P2, K2, P2, K5

Row 89

K3, P2, K2, P1, K2, P2, K1, P3, K1, P1, K2, P2, (K1, P3)three times, K1, P2, K2, P1, K1, P3, K1, P2, K2, P1, K2, P2, K3

Row 90

K5, P2, K1, P2, K2, P5, K1, P2, K2, P5, K3, P5, K2, P2, K1, P5, K2, P2, K1, P2, K5

Row 91

K3, P1, K2, P2, K2, P1, K1, P3, K1, P2, K2, P1, K1, P3, K1, P2, K1, P2, K1, P3, K1, P1, K2, P2, K1, P3, K1, P1, K2, P2, K2, P1, K3

Row 92

K4, P2, K2, P2, K1, P5, K2, P2, K1, P5, K2, P1, K2, P5, K1, P2, K2, P5, K1, P2, K2, P2, K4

Row 93

K3, P1, K2, P1, K2, P2, K1, P3, K1, P1, K2, P2, K1, P3, (K1, P2)twice, K1, P3, K1, P2, K2, P1, K1, P3, K1, P2, K2, P1, K2, P1, K3

Row 94

K4, P2, K1, P2, K2, P5, K1, P2, K2, P5, K2, P1, K2, P5, K2, P2, K1, P5, K2, P2, K1, P2, K4

Row 95

K5, P2, K2, P1, K1, P3, K1, P2, K2, P1, K1, P3, K1, P2, K3, P2, K1, P3, K1, P1, K2, P2, K1, P3, K1, P1, K2, P2, K5

Row 96

K3, P2, K2, P2, K1, P5, K2, P2, K1, P5, K2, P3, K2, P5, K1, P2, K2, P5, K1, P2, K2, P2, K3

Row 97

K5, P1, K2, P2, K1, P3, K1, P1, K2, P2, K1, P3, K1, P2, K3, P2, K1, P3, K1, P2, K2, P1, K1, P3, K1, P2, K2, P1, K5

Row 98

K3, P2, K1, P2, K2, P5, K1, P2, K2, P5, K2, P3, K2, P5, K2, P2, K1, P5, K2, P2, K1, P2, K3

Rhombi Cushion 1

Row 99

K5, P1, K2, P1, K1, P3, K1, P2, K2, P1, K1, P3, K1, P2, K2, P1, K2, P2, K1, P3, K1, P1, K2, P2, K1, P3, K1, P1, K2, P1, K5

Row 100

K3, P2, K1, P2, K1, P5, K2, P2, K1, P5, K2, P2, K1, P2, K2, P5, K1, P2, K2, P5, K1, P2, K1, P2, K3

Row 101

K5, P1, K2, P1, K1, P3, K1, P1, K2, P2, K1, P3, K1, P2, K2, P1, K2, P2, K1, P3, K1, P2, K2, P1, K1, P3, K1, P1, K2, P1, K5

Row 102

K3, P2, K1, P2, K1, P5, K1, P2, K2, P5, K2, P2, K1, P2, K2, P5, K2, P2, K1, P5, K1, P2, K1, P2, K3

Row 103

K5, P1, K2, P1, K1, P3, K1, P1, K2, P1, K1, P3, K1, P2, K2, P3, K2, P2, K1, P3, K1, P1, K2, P1, K1, P3, K1, P1, K2, P1, K5

Row 104

K3, P2, K1, P2, K1, P5, K1, P2, K1, P5, K2, P2, K3, P2, K2, P5, K1, P2, K1, P5, K1, P2, K1, P2, K3

Row 105

K5, P1, K2, P1, K1, P3, K1, P1, K2, P1, K1, P3, K1, P2, K2, P3, K2, P2, K1, P3, K1, P1, K2, P1, K1, P3, K1, P1, K2, P1, K5

Row 106

K3, P2, K1, P2, K1, P5, K1, P2, K1, P5, K2, P2, K3, P2, K2, P5, K1, P2, K1, P5, K1, P2, K1, P2, K3

Row 107

K5, P1, K2, P1, K1, P3, K1, P1, K2, P1, K1, P3, K1, P2, K2, P3, K2, P2, K1, P3, K1, P1, K2, P1, K1, P3, K1, P1, K2, P1, K5

Row 108

K3, P2, K1, P2, K1, P5, K1, P2, K2, P5, K2, P2, K1, P2, K2, P5, K2, P2, K1, P5, K1, P2, K1, P2, K3

Row 109

K5, P1, K2, P1, K1, P3, K1, P1, K2, P2, K1, P3, K1, P2, K2, P1, K2, P2, K1, P3, K1, P2, K2, P1, K1, P3, K1, P1, K2, P1, K5

Row 110

K3, P2, K1, P2, K1, P5, K2, P2, K1, P5, K2, P2, K1, P2, K2, P5, K1, P2, K2, P5, K1, P2, K1, P2, K3

Rhombi Cushion 1

Row 111

K5, P1, K2, P1, K1, P3, K1, P2, K2, P1, K1, P3, K1, P2, K2, P1, K2, P2, K1, P3, K1, P1, K2, P2, K1, P3, K1, P1, K2, P1, K5

Row 112

K3, P2, K1, P2, K2, P5, K1, P2, K2, P5, K2, P3, K2, P5, K2, P2, K1, P5, K2, P2, K1, P2, K3

Row 113

K5, P1, K2, P2, K1, P3, K1, P1, K2, P2, K1, P3, K1, P2, K3, P2, K1, P3, K1, P2, K2, P1, K1, P3, K1, P2, K2, P1, K5

Row 114

K3, P2, K2, P2, K1, P5, K2, P2, K1, P5, K2, P3, K2, P5, K1, P2, K2, P5, K1, P2, K2, P2, K3

Row 115

K5, P2, K2, P1, K1, P3, K1, P2, K2, P1, K1, P3, K1, P2, K3, P2, K1, P3, K1, P1, K2, P2, K1, P3, K1, P1, K2, P2, K5

Row 116

K4, P2, K1, P2, K2, P5, K1, P2, K2, P5, K2, P1, K2, P5, K2, P2, K1, P5, K2, P2, K1, P2, K4

Row 117

K3, P1, K2, P1, K2, P2, K1, P3, K1, P1, K2, P2, K1, P3, (K1, P2)twice, K1, P3, K1, P2, K2, P1, K1, P3, K1, P2, K2, P1, K2, P1, K3

Row 118

K4, P2, K2, P2, K1, P5, K2, P2, K1, P5, K2, P1, K2, P5, K1, P2, K2, P5, K1, P2, K2, P2, K4

Row 119

K3, P1, K2, P2, K2, P1, K1, P3, K1, P2, K2, P1, K1, P3, K1, P2, K1, P2, K1, P3, K1, P1, K2, P2, K1, P3, K1, P1, K2, P2, K2, P1, K3

Row 120

K5, P2, K1, P2, K2, P5, K1, P2, K2, P5, K3, P5, K2, P2, K1, P5, K2, P2, K1, P2, K5

Row 121

K3, P2, K2, P1, K2, P2, K1, P3, K1, P1, K2, P2, (K1, P3)three times, K1, P2, K2, P1, K1, P3, K1, P2, K2, P1, K2, P2, K3

Row 122

K5, P2, K2, P2, K1, P5, K2, P2, K1, P5, K3, P5, K1, P2, K2, P5, K1, P2, K2, P2, K5

Rhombi Cushion 1

Row 123

K3, (P2, K2)twice, P1, K1, P3, K1, P2, K2, P1, (K1, P3)three times, K1, P1, K2, P2, K1, P3, K1, P1, (K2, P2)twice, K3

Row 124

K6, P2, K1, P2, K2, P5, K1, P2, K2, P5, K1, P5, K2, P2, K1, P5, K2, P2, K1, P2, K6

Row 125

K3, P3, K2, P1, K2, P2, K1, P3, K1, P1, K2, P2, K1, P3, K1, P1, K1, P3, K1, P2, K2, P1, K1, P3, K1, P2, K2, P1, K2, P3, K3

Row 126

K6, P2, K2, P2, K1, P5, K2, P2, (K1, P5)twice, K1, P2, K2, P5, K1, P2, K2, P2, K6

Row 127

K3, P3, K2, P2, K2, P1, K1, P3, K1, P2, K2, P1, K1, P3, K1, P1, K1, P3, K1, P1, K2, P2, K1, P3, K1, P1, K2, P2, K2, P3, K3

Row 128

K3, P2, K2, P2, K1, P2, K2, P5, K1, P2, K2, P9, K2, P2, K1, P5, K2, P2, K1, P2, K2, P2, K3

Row 129

K5, P2, K2, P1, K2, P2, K1, P3, K1, P1, K2, P2, K1, P7, K1, P2, K2, P1, K1, P3, K1, P2, K2, P1, K2, P2, K5

Row 130

K3, P2, (K2, P2)twice, K1, P5, K2, P2, K1, P9, K1, P2, K2, P5, K1, (P2, K2)twice, P2, K3

Row 131

K5, (P2, K2)twice, P1, K1, P3, K1, P2, K2, P1, K1, P7, K1, P1, K2, P2, K1, P3, K1, P1, (K2, P2)twice, K5

Row 132

K3, P3, K2, P2, K1, P2, K2, P5, K1, P2, K2, P7, K2, P2, K1, P5, K2, P2, K1, P2, K2, P3, K3

Row 133

K6, P2, K2, P1, K2, P2, K1, P3, K1, P1, K2, P2, K1, P5, K1, P2, K2, P1, K1, P3, K1, P2, K2, P1, K2, P2, K6

Row 134

K3, P3, (K2, P2)twice, K1, P5, K2, P2, K1, P7, K1, P2, K2, P5, K1, (P2, K2)twice, P3, K3

Row 135

K6, (P2, K2)twice, P1, K1, P3, K1, P2, K2, P1, K1, P5, K1, P1, K2, P2, K1, P3, K1, P1, (K2, P2)twice, K6

Rhombi Cushion 1

Row 136

K5, P2, K2, P2, K1, P2, K2, P5, K1, P2, K2, P5, K2, P2, K1, P5, K2, P2, K1, P2, K2, P2, K5

Row 137

K3, (P2, K2)twice, P1, K2, P2, K1, P3, K1, P1, K2, P2, K1, P3, K1, P2, K2, P1, K1, P3, K1, P2, K2, P1, (K2, P2)twice, K3

Row 138

K5, (P2,K2)twice, P2, K1, P5, K2, P2, K1, P5, K1, P2, K2, P5, K1, P2, (K2, P2)twice, K5

Row 139

K3, (P2,K2)three times, P1, K1, P3, K1, P2, K2, P1, K1, P3, K1, P1, K2, P2, K1, P3, K1, P1, (K2, P2)three times, K3

Row 140

K6, P2, K2, P2, K1, P2, K2, P5, K1, P2, K2, P3, K2, P2, K1, P5, K2, P2, K1, P2, K2, P2, K6

Row 141

K3, P3, K2, P2, K2, P1, K2, P2, K1, P3, K1, P1, K2, P2, K1, P1, K1, P2, K2, P1, K1, P3, K1, P2, K2, P1, K2, P2, K2, P3, K3

Row 142

K3, P2, K1, (P2, K2)twice, P2, K1, P5, K2, P2, K1, P3, K1, P2, K2, P5, K1, P2, (K2, P2)twice, K1, P2, K3

Row 143

K5, P1, (K2, P2)twice, K2, P1, K1, P3, K1, P2, K2, (P1, K1)twice, P1, K2, P2, K1, P3, K1, P1, K2, (P2, K2)twice, P1, K5

Row 144

K3, P2, (K2, P2)twice, K1, P2, K2, P5, K1, P2, K2, P1, K2, P2, K1, P5, K2, P2, K1, (P2, K2)twice, P2, K3

Row 145

K5, (P2, K2)twice, P1, K2, P2, K1, P3, K1, P1, K2, P2, K1, P2, K2, P1, K1, P3, K1, P2, K2, P1, (K2, P2)twice, K5

Row 146

K5, P1, K1, (P2, K2)twice, P2, K1, P5, K2, P2, K1, P1, K1, P2, K2, P5, K1, (P2, K2)twice, P2, K1, P1, K5

Row 147

K6, P1, (K2, P2)twice, K2, P1, K1, P3, K1, P2, K2, P1, K1, P1, K2, P2, K1, P3, K1, P1, (K2, P2)twice, K2, P1, K6

Row 148

K5, P1, (K2, P2)twice, K1, P2, K2, P5, K1, P2, K3, P2, K1, P5, K2, P2, K1, (P2, K2)twice, P1, K5

© Louise Hilton 2016 – All Rights Reserved

This pattern is intended for personal, non-commercial, not for profit use. You may not sell, share, or distribute this pattern in any format, including print or electronic form.

Rhombi Cushion 1

Row 149

K6, (P2, K2)twice, P1, K2, P2, K1, P3, K1, P1, K2, P3, K2, P1, K1, P3, K1, P2, K2, P1, (K2, P2)twice, K6

Row 150

K6, P1, K1, (P2, K2)twice, P2, K1, P5, K2, P2, K1, P2, K2, P5, K1, (P2, K2)twice, P2, K1, P1, K6

Row 151

K7, P1, (K2, P2)twice, K2, P1, K1, P3, K1, P2, K2, P1, K2, P2, K1, P3, K1, P1, (K2, P2)twice, K2, P1, K7

Row 152

K6, P1, (K2, P2)twice, K1, P2, K2, P5, (K1, P2)twice, K1, P5, K2, P2, K1, (P2, K2)twice, P1, K6

Row 153

K7, (P2, K2)twice, P1, K2, P2, K1, P3, K1, (P1, K2)twice, P1, K1, P3, K1, P2, K2, P1, (K2, P2)twice, K7

Row 154

K7, P1, K1, (P2, K2)twice, P2, K1, P5, K2, P3, K2, P5, K1, (P2, K2)twice, P2, K1, P1, K7

Row 155

K8, P1, (K2, P2)twice, K2, P1, K1, P3, K1, P2, K3, P2, K1, P3, K1, P1, (K2, P2)twice, K2, P1, K8

Row 156

K7, P1, (K2, P2)twice, K1, P2, K2, P5, K1, P3, K1, P5, K2, P2, K1, (P2, K2)twice, P1, K7

Row 157

K8, (P2, K2)twice, P1, K2, P2, K1, P3, K1, P1, K3, P1, K1, P3, K1, P2, K2, P1, (K2, P2)twice, K8

Row 158

K8, P1, K1, (P2, K2)twice, P2, K1, P5, K2, P1, K2, P5, K1, (P2, K2)twice, P2, K1, P1, K8

Row 159

K9, P1, (K2, P2)twice, K2, P1, K1, P3, K1, (P2, K1)twice, P3, K1, P1, (K2, P2)twice, K2, P1, K9

Row 160

K8, P1, (K2, P2)twice, K1, P2, K2, P5, K1, P1, K1, P5, K2, P2, K1, (P2, K2)twice, P1, K8

Row 161

K9, (P2, K2)twice, P1, K2, P2, K1, P3, K1, (P1, K1)twice, P3, K1, P2, K2, P1, (K2, P2)twice, K9

Row 162

K5, P1, K3, P1, K1, (P2, K2)twice, P2, K1, P5, K3, P5, K1, (P2, K2)twice, P2, K1, P1, K3, P1, K5

Rhombi Cushion 1

Row 163

K3, P2, K5, P1, (K2, P2)twice, K2, P1, (K1, P3)three times, K1, P1, (K2, P2)twice, K2, P1, K5, P2, K3

Row 164

K5, P1, K3, P1, (K2, P2)twice, K1, P2, K2, P5, K1, P5, K2, P2, K1, (P2, K2)twice, P1, K3, P1, K5

Row 165

K3, P2, K5, (P2, K2)twice, P1, K2, P2, K1, P3, K1, P1, K1, P3, K1, P2, K2, P1, (K2, P2)twice, K5, P2, K3

Row 166

K6, P1, K3, P1, K1, (P2, K2)twice, P2, (K1, P5)twice, K1, (P2, K2)twice, P2, K1, P1, K3, P1, K6

Row 167

K3, P3, K5, P1, (K2, P2)twice, K2, P1, K1, P3, K1, P1, K1, P3, K1, P1, (K2, P2)twice, K2, P1, K5, P3, K3

Row 168

K3, P2, K1, P1, K3, P1, (K2, P2)twice, K1, P2, K2, P9, K2, P2, K1, (P2, K2)twice, P1, K3, P1, K1, P2, K3

Row 169

K5, P1, K5, (P2, K2)twice, P1, K2, P2, K1, P7, K1, P2, K2, P1, (K2, P2)twice, K5, P1, K5

Row 170

K3, P2, K2, P1, K3, P1, K1, (P2, K2)twice, P2, K1, P9, K1, (P2, K2)twice, P2, K1, P1, K3, P1, K2, P2, K3

Row 171

K5, P2, K5, P1, (K2, P2)twice, K2, P1, K1, P7, K1, P1, (K2, P2)twice, K2, P1, K5, P2, K5

Row 172

K3, P3, K1, P1, K3, P1, (K2, P2)twice, K1, P2, K2, P7, K2, P2, K1, (P2, K2)twice, P1, K3, P1, K1, P3, K3

Row 173

K6, P1, K5, (P2, K2)twice, P1, K2, P2, K1, P5, K1, P2, K2, P1, (K2, P2)twice, K5, P1, K6

Row 174

K3, P3, K2, P1, K3, P1, K1, (P2, K2)twice, P2, K1, P7, K1, (P2, K2)twice, P2, K1, P1, K3, P1, K2, P3, K3

Row 175

K6, P2, K5, P1, (K2, P2)twice, K2, P1, K1, P5, K1, P1, (K2, P2)twice, K2, P1, K5, P2, K6

Row 176

K5, P2, K1, P1, K3, P1, (K2, P2)twice, K1, P2, K2, P5, K2, P2, K1, (P2, K2)twice, P1, K3, P1, K1, P2, K5

Rhombi Cushion 1

Row 177

K3, P2, K2, P1, K5, (P2, K2)twice, P1, K2, P2, K1, P3, K1, P2, K2, P1, (K2, P2)twice, K5, P1, K2, P2, K3

Row 178

K5, P2, K2, P1, K3, P1, K1, (P2, K2)twice, P2, K1, P5, K1, P2, (K2, P2)twice, K1, P1, K3, P1, K2, P2, K5

Row 179

K3, P2, K2, P2, K5, P1, (K2, P2)twice, K2, P1, K1, P3, K1, P1, K2, (P2, K2)twice, P1, K5, P2, K2, P2, K3

Row 180

K6, P2, K1, P1, K3, P1, (K2, P2)twice, K1, P2, K2, P3, K2, P2, K1, (P2, K2)twice, P1, K3, P1, K1, P2, K6

Row 181

K3, P3, K2, P1, K5, (P2, K2)twice, P1, K2, P2, K1, P1, K1, P2, K2, P1, (K2, P2)twice, K5, P1, K2, P3, K3

Row 182

K3, P2, K1, P2, K2, P1, K3, P1, K1, (P2, K2)twice, P2, K1, P3, K1, (P2, K2)twice, P2, K1, P1, K3, P1, K2, P2, K1, P2, K3

Row 183

K5, P1, K2, P2, K5, P1, (K2, P2)twice, K2, (P1, K1)twice, P1, K2, (P2, K2)twice, P1, K5, P2, K2, P1, K5

Row 184

K3, P2, K2, P2, K1, P1, K3, P1, (K2, P2)twice, K1, P2, K2, P1, K2, P2, K1, (P2, K2)twice, P1, K3, P1, K1, P2, K2, P2, K3

Row 185

K5, P2, K2, P1, K5, (P2, K2)twice, P1, K2, P2, K1, P2, K2, P1, (K2, P2)twice, K5, P1, K2, P2, K5

Row 186

K5, P1, K1, P2, K2, P1, K3, P1, K1, (P2, K2)twice, P2, K1, P1, K1, P2, (K2, P2)twice, K1, P1, K3, P1, K2, P2, K1, P1, K5

Row 187

K6, P1, K2, P2, K5, P1, (K2, P2)twice, K2, P1, K1, P1, K2, (P2, K2)twice, P1, K5, P2, K2, P1, K6

Row 188

K5, P1, K2, P2, K1, P1, K3, P1, (K2, P2)twice, K1, P2, K3, P2, K1, (P2, K2)twice, P1, K3, P1, K1, P2, K2, P1, K5

Row 189

K6, P2, K2, P1, K5, (P2, K2)twice, P1, K2, P3, K2, P1, (K2, P2)twice, K5, P1, K2, P2, K6

Rhombi Cushion 1

Row 190

K6, P1, K1, P2, K2, P1, K3, P1, K1, (P2, K2)twice, P2, K1, (P2, K2)twice, P2, K1, P1, K3, P1, K2, P2, K1, P1, K6

Row 191

K7, P1, K2, P2, K5, P1, (K2, P2)twice, K2, P1, (K2, P2)twice, K2, P1, K5, P2, K2, P1, K7

Row 192

K6, P1, K2, P2, K1, P1, K3, P1, (K2, P2)twice, (K1, P2)three times, K2, P2, K2, P1, K3, P1, K1, P2, K2, P1, K6

Row 193

K7, P2, K2, P1, K5, (P2, K2)twice, (P1, K2)three times, P2, K2, P2, K5, P1, K2, P2, K7

Row 194

K7, P1, K1, P2, K2, P1, K3, P1, K1, (P2, K2)twice, P3, (K2, P2)twice, K1, P1, K3, P1, K2, P2, K1, P1, K7

Row 195

K8, P1, K2, P2, K5, P1, (K2, P2)twice, K3, (P2, K2)twice, P1, K5, P2, K2, P1, K8

Row 196

K7, P1, K2, P2, K1, P1, K3, P1, (K2, P2)twice, K1, P3, K1, (P2, K2)twice, P1, K3, P1, K1, P2, K2, P1, K7

Row 197

K8, P2, K2, P1, K5, (P2, K2)twice, P1, K3, P1, (K2, P2)twice, K5, P1, K2, P2, K8

Row 198

K5, P1, K2, P1, K1, P2, K2, P1, K3, P1, K1, (P2, K2)twice, P1, (K2, P2)twice, K1, P1, K3, P1, K2, P2, K1, P1, K2, P1, K5

Row 199

K3, P2, K4, P1, K2, P2, K5, P1, (K2, P2)twice, K1, (P2, K2)twice, P1, K5, P2, K2, P1, K4, P2, K3

Row 200

K5, (P1, K2)twice, P2, K1, P1, K3, P1, (K2, P2)twice, K1 P1, K1, (P2, K2)twice, P1, K3, P1, K1, P2, (K2, P1)twice, K5

Row 201

K3, P2, K4, P2, K2, P1, K5, (P2, K2)twice, P1, K1, P1, (K2, P2)twice, K5, P1, K2, P2, K4, P2, K3

Rows 202 to 209

Knit all stitches

Cast off.

© Louise Hilton 2016 – All Rights Reserved

This pattern is intended for personal, non-commercial, not for profit use. You may not sell, share, or distribute this pattern in any format, including print or electronic form.

Rhombi Cushion 1

Finishing

Block if required. I blocked my finished fabric to 40cm wide and 90cm long.



Fold finished piece in half with preferred side on the outside and seam the cast on and cast off edge together. Place appropriate size cushion pad in centre and seam inside edges.

Alternatively sew all sides leaving a 5 cm opening. Stuff cushion with hobby fill/toy stuffing to desired firmness. Close opening.

Thanks for knitting. I hope you enjoyed creating your finished cushion. To see what else I've been up to please visit my Ravelry page <http://www.ravelry.com/designers/louise-hilton/patterns>

I'd love to see pictures of your finished projects, you can email me at louise_m_hilton@hotmail.com or link your project to my pattern on Ravelry.

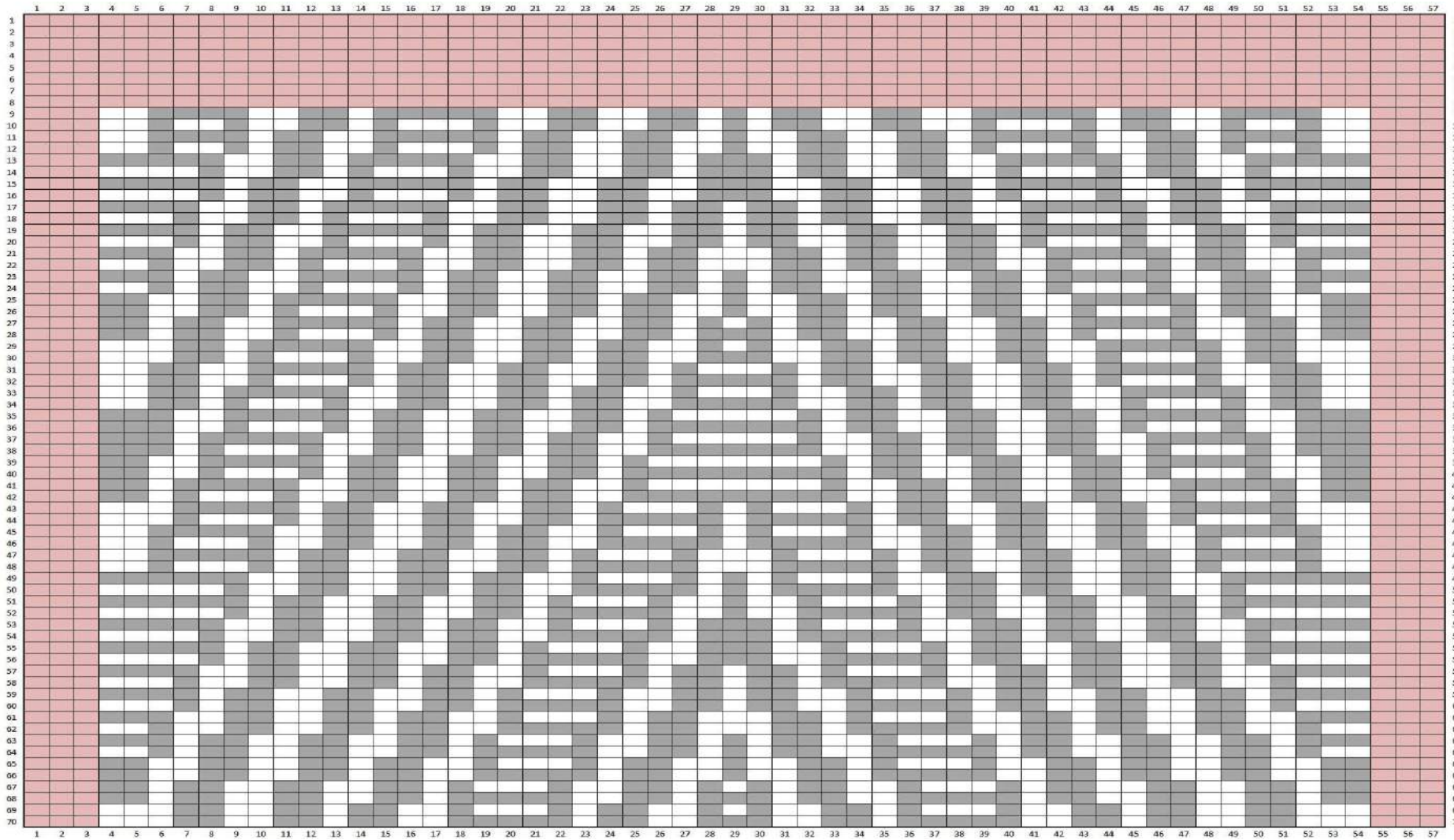


© Louise Hilton 2016 – All Rights Reserved

This pattern is intended for personal, non-commercial, not for profit use. You may not sell, share, or distribute this pattern in any format, including print or electronic form.

Rhombi Cushion 1

Chart – Part 1 – Refer to Page 2 for Instructions and Chart Key

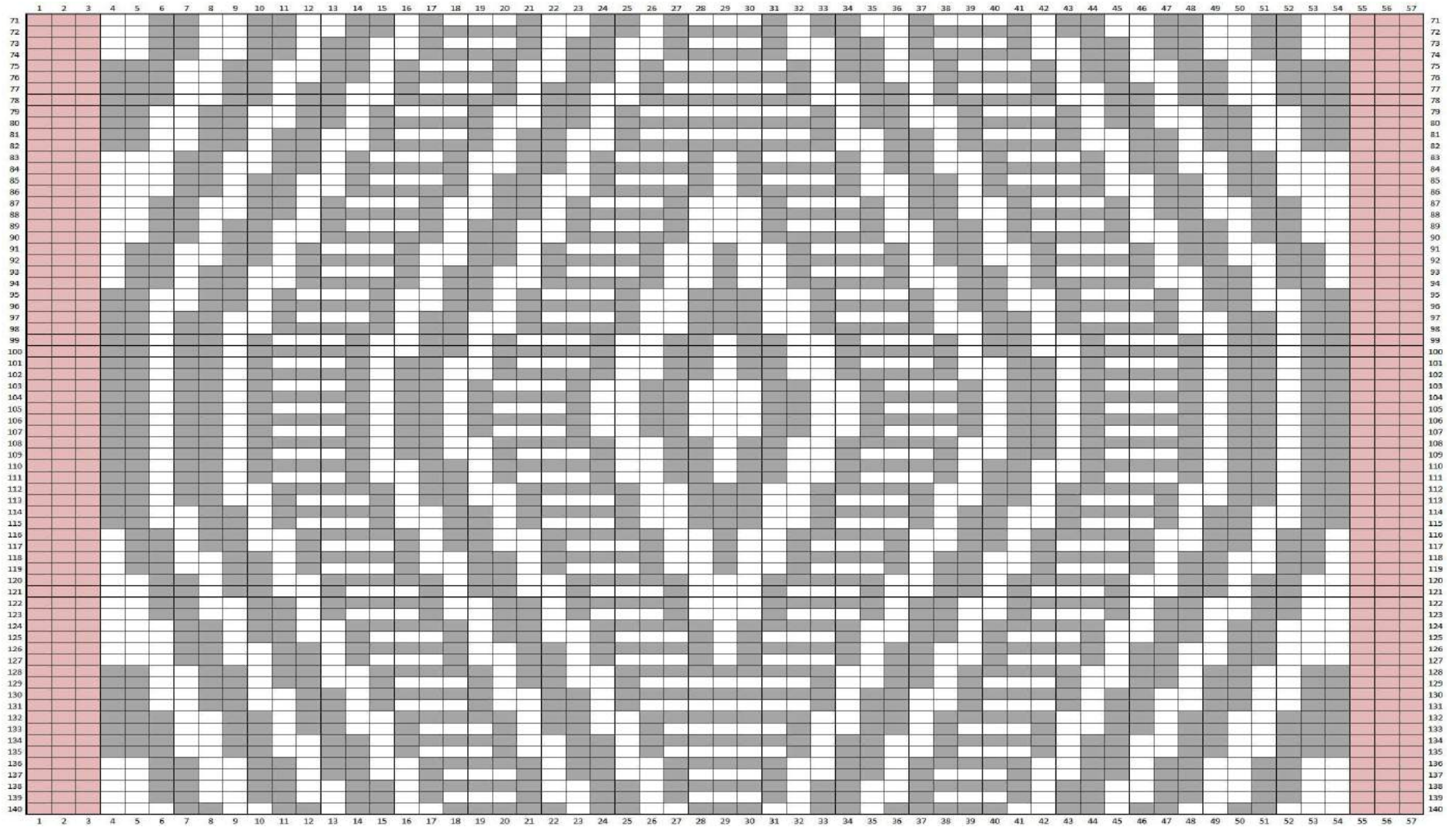


© Louise Hilton 2016 – All Rights Reserved

This pattern is intended for personal, non-commercial, not for profit use. You may not sell, share, or distribute this pattern in any format, including print or electronic form.

Rhombi Cushion 1

Chart - Part 2 - Refer to Page 2 for Instructions and Chart Key

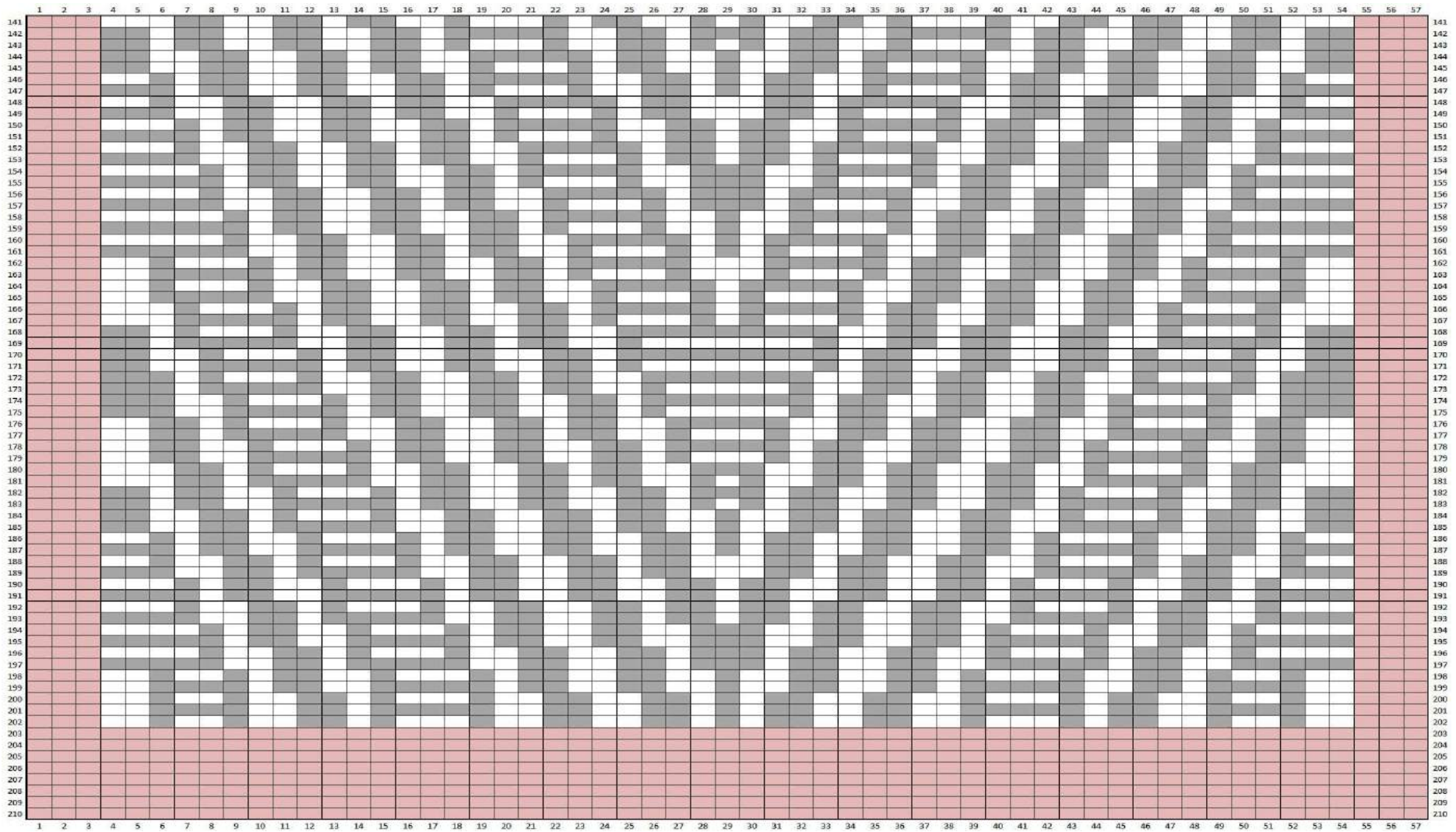


© Louise Hilton 2016 - All Rights Reserved

This pattern is intended for personal, non-commercial, not for profit use. You may not sell, share, or distribute this pattern in any format, including print or electronic form.

Rhombi Cushion 1

Chart – Part 3 – Refer to Page 2 for Instructions and Chart Key



© Louise Hilton 2016 – All Rights Reserved

This pattern is intended for personal, non-commercial, not for profit use. You may not sell, share, or distribute this pattern in any format, including print or electronic form.