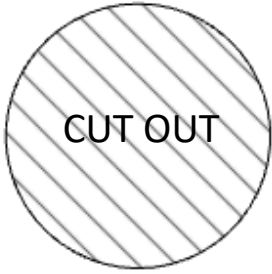


PART 1

↑ align this edge with left side of cardboard piece ↑



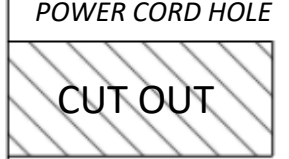
CUT OUT

↑ align this edge with front of cardboard piece ↑

cut through cardboard along line

*CHARGING
BASE
PLATFORM*

cut through cardboard along line



CUT OUT

POWER CORD HOLE

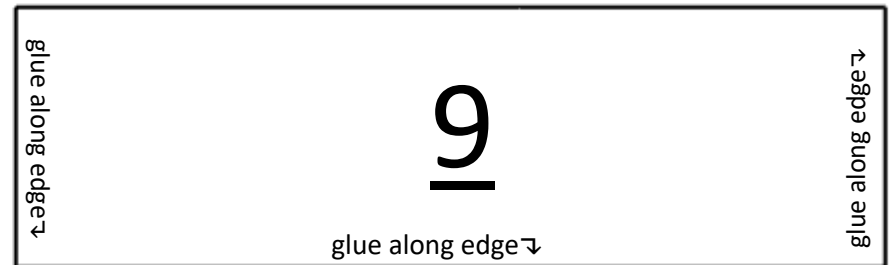
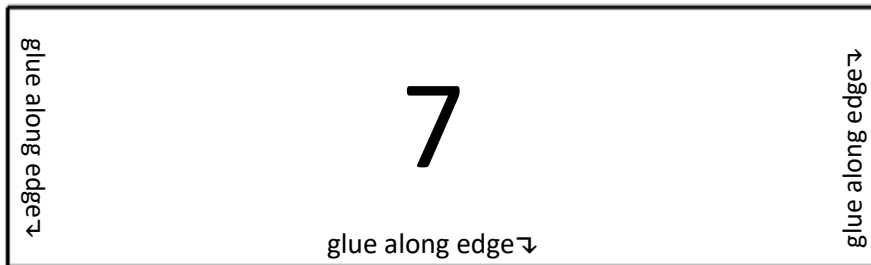
← LEFT SIDE

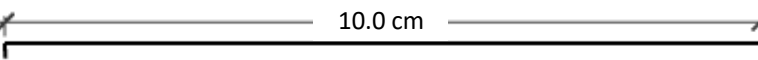
RIGHT SIDE →

lightly slit first layer of cardboard along dotted line – bending line



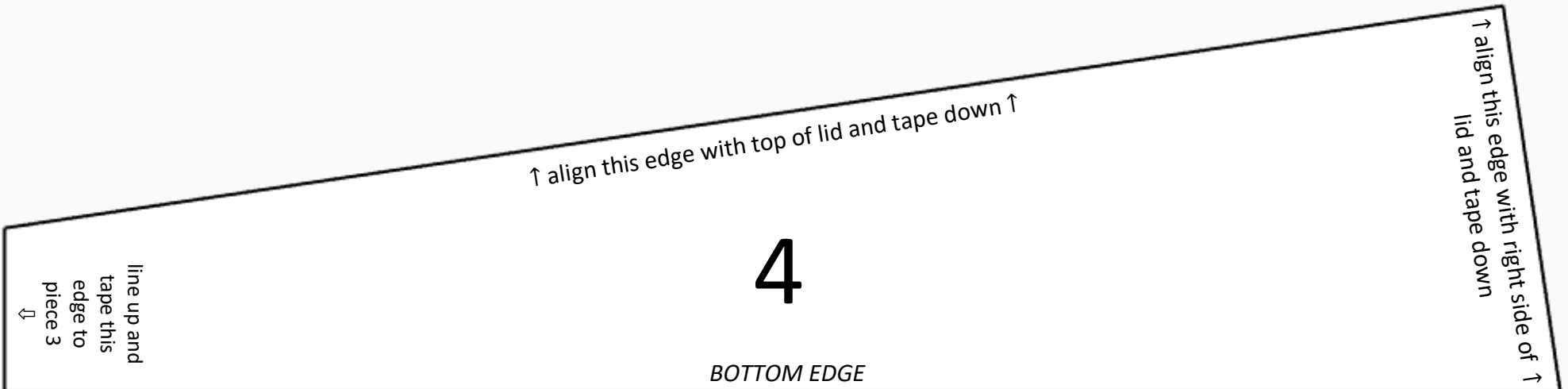
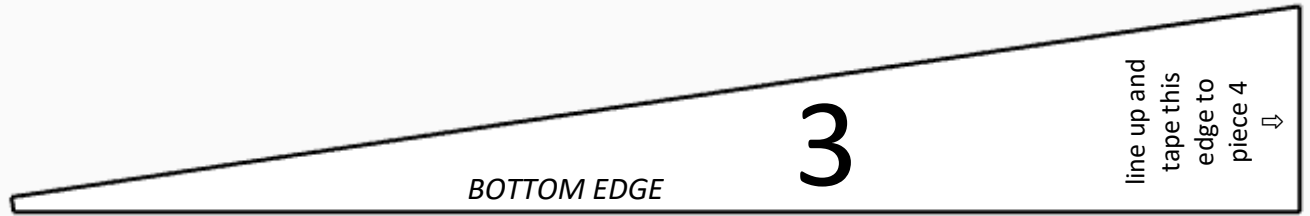
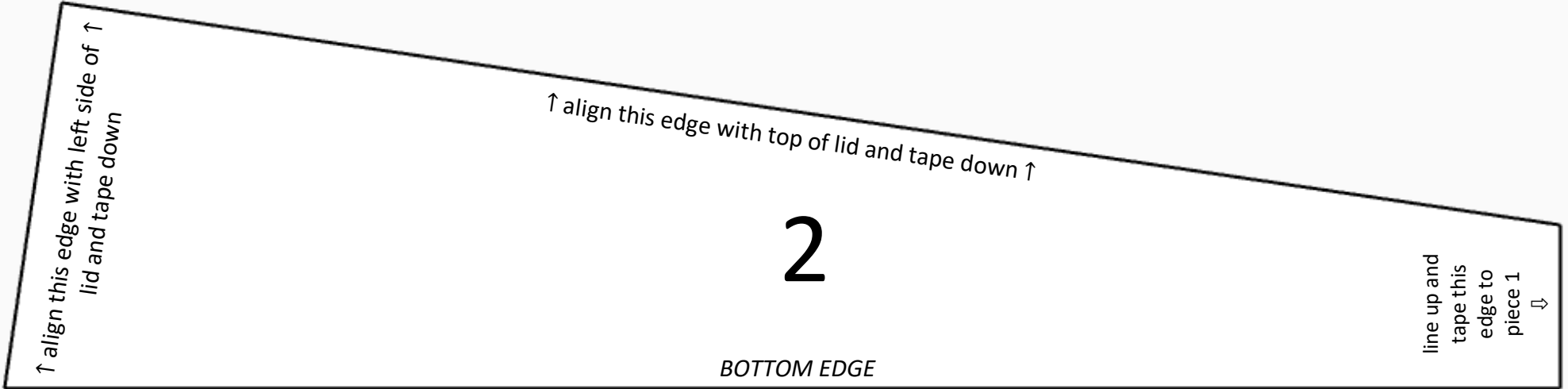
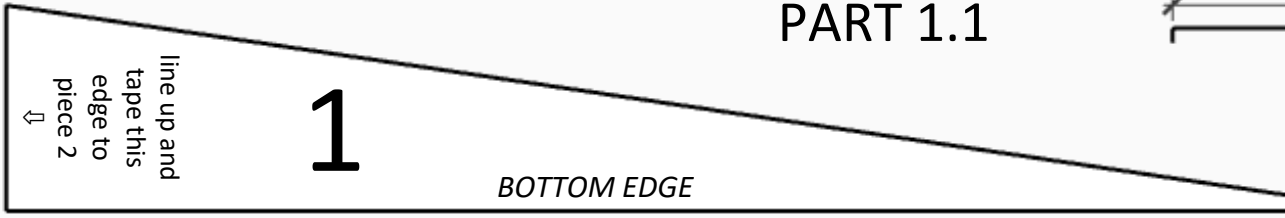
save for PART 3 (3rd page)



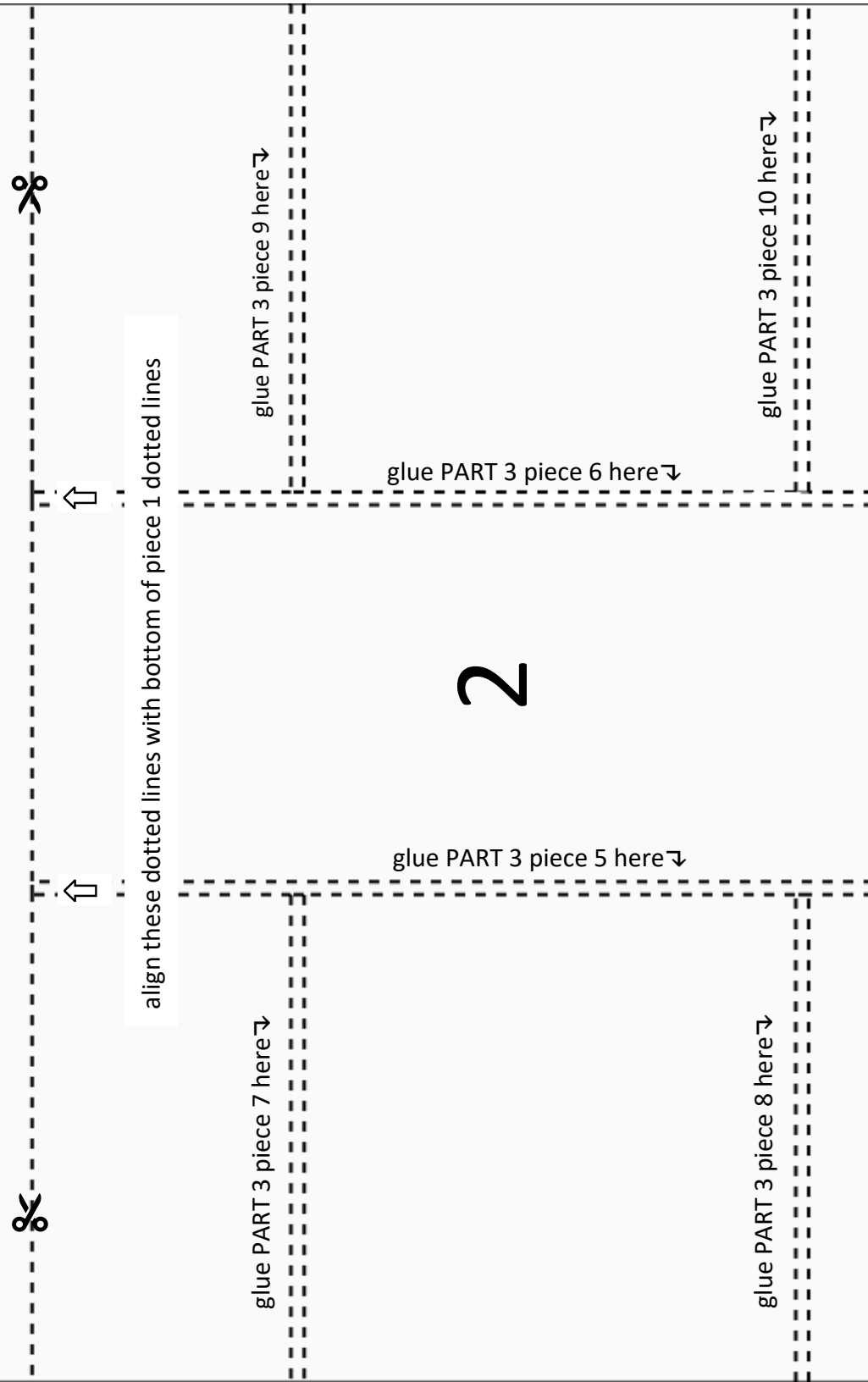
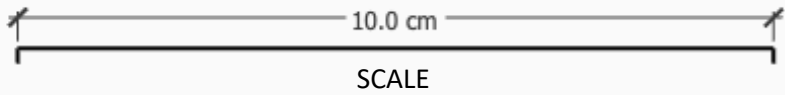
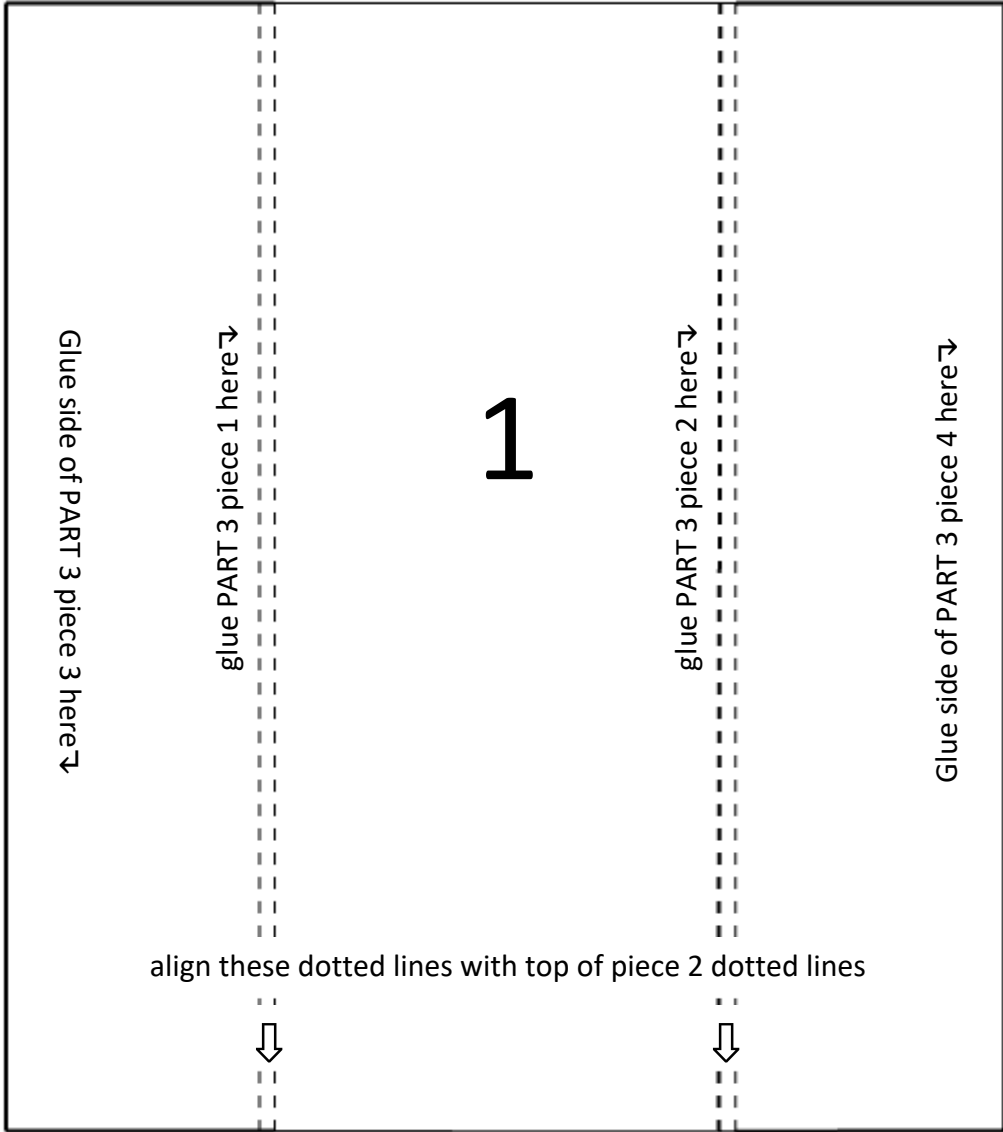
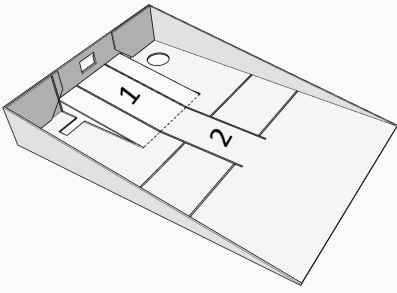
SCALE  10.0 cm

PART 1.1

10.0 cm



PART 2



align these dotted lines with bottom of piece 1 dotted lines

glue PART 3 piece 9 here ↴

glue PART 3 piece 6 here ↴

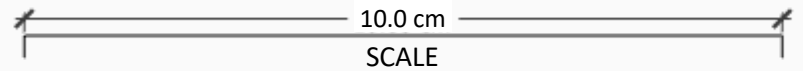
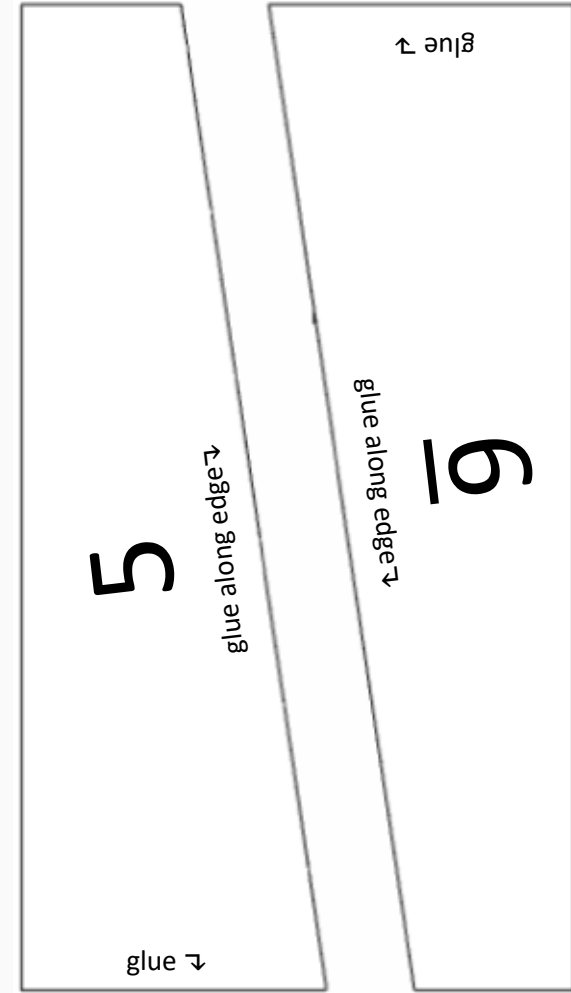
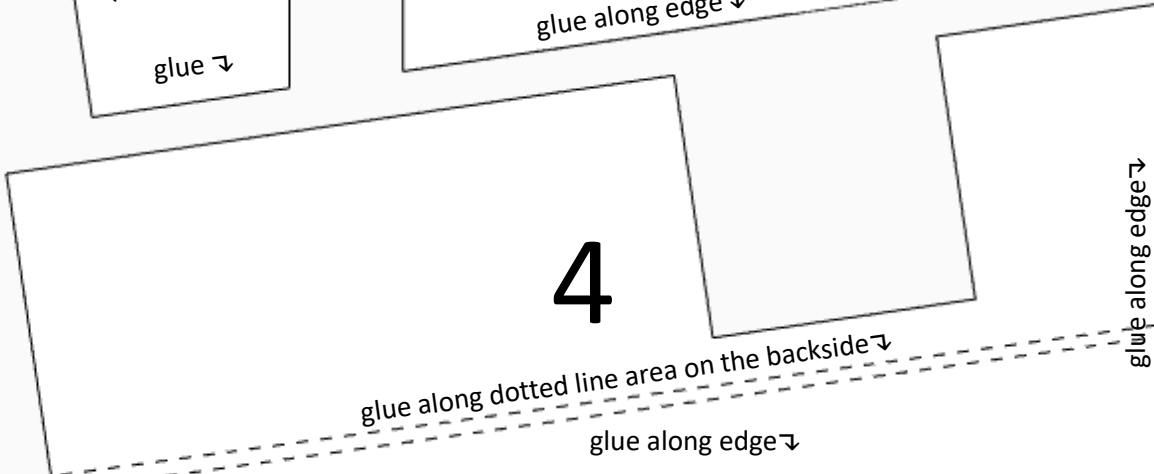
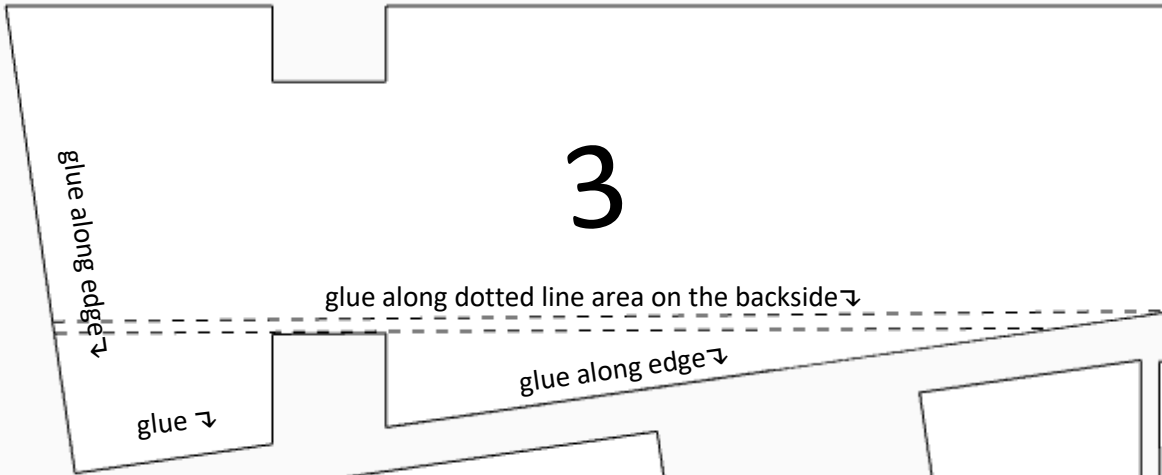
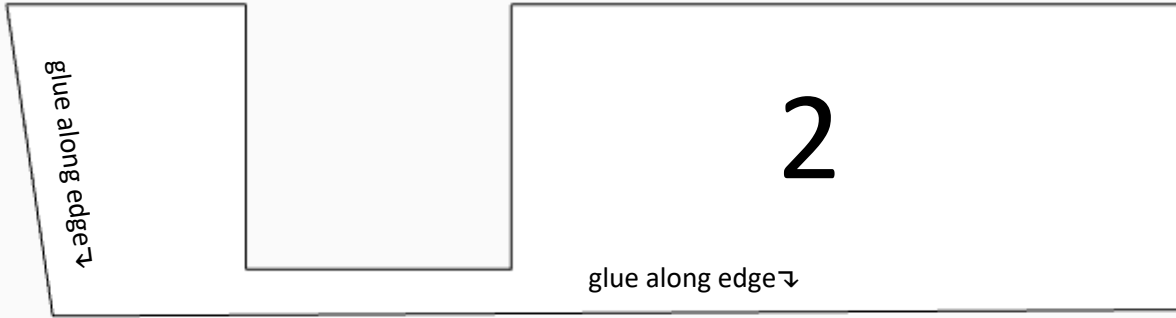
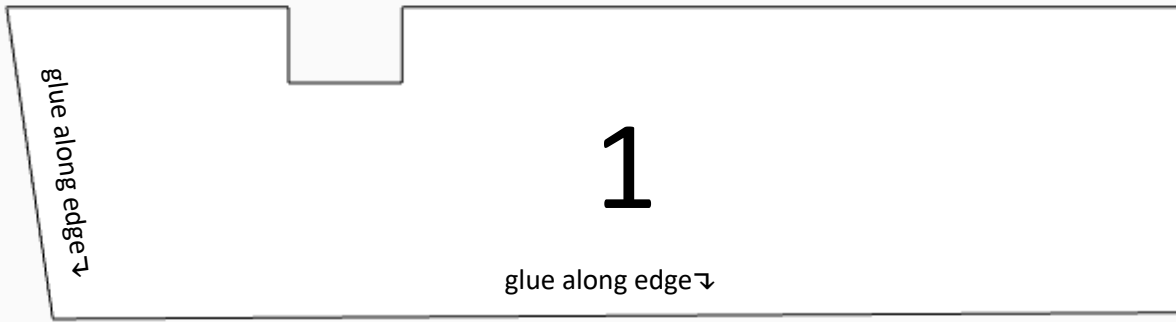
glue PART 3 piece 10 here ↴

glue PART 3 piece 7 here ↴

glue PART 3 piece 5 here ↴

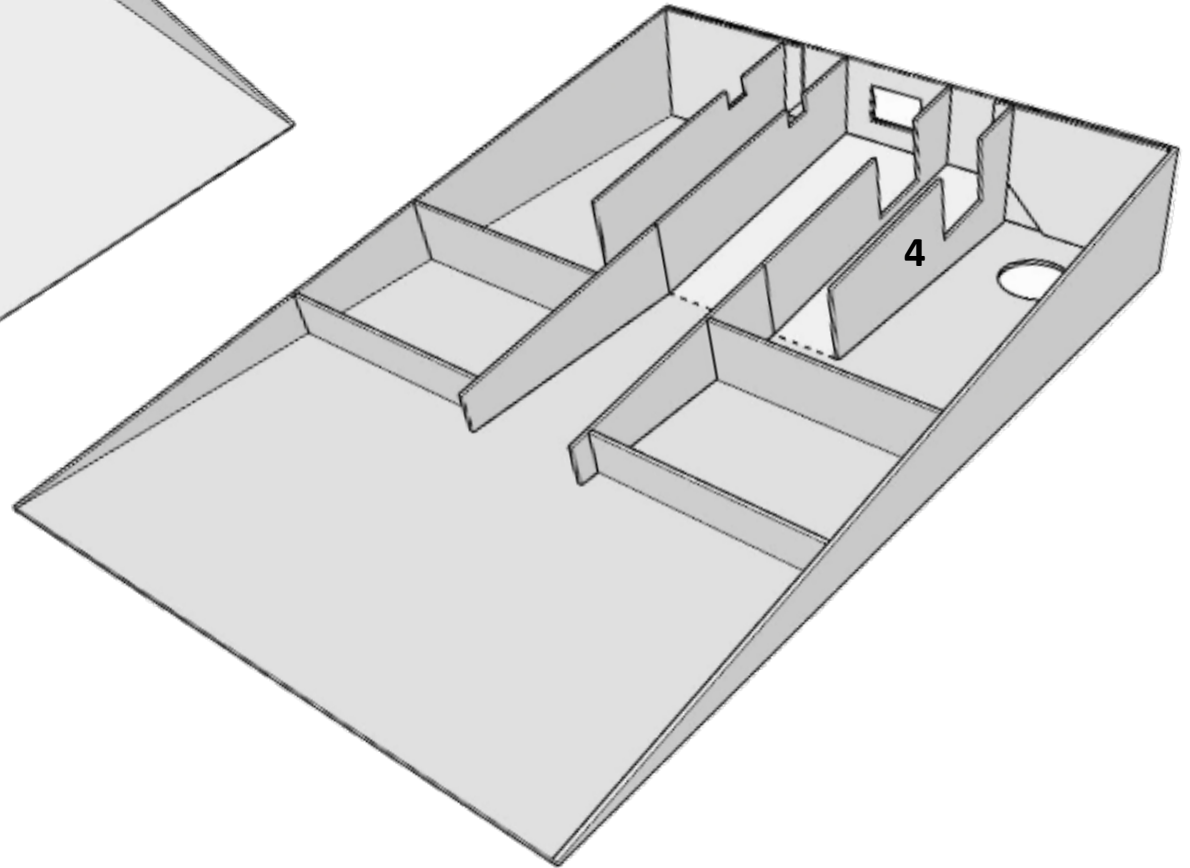
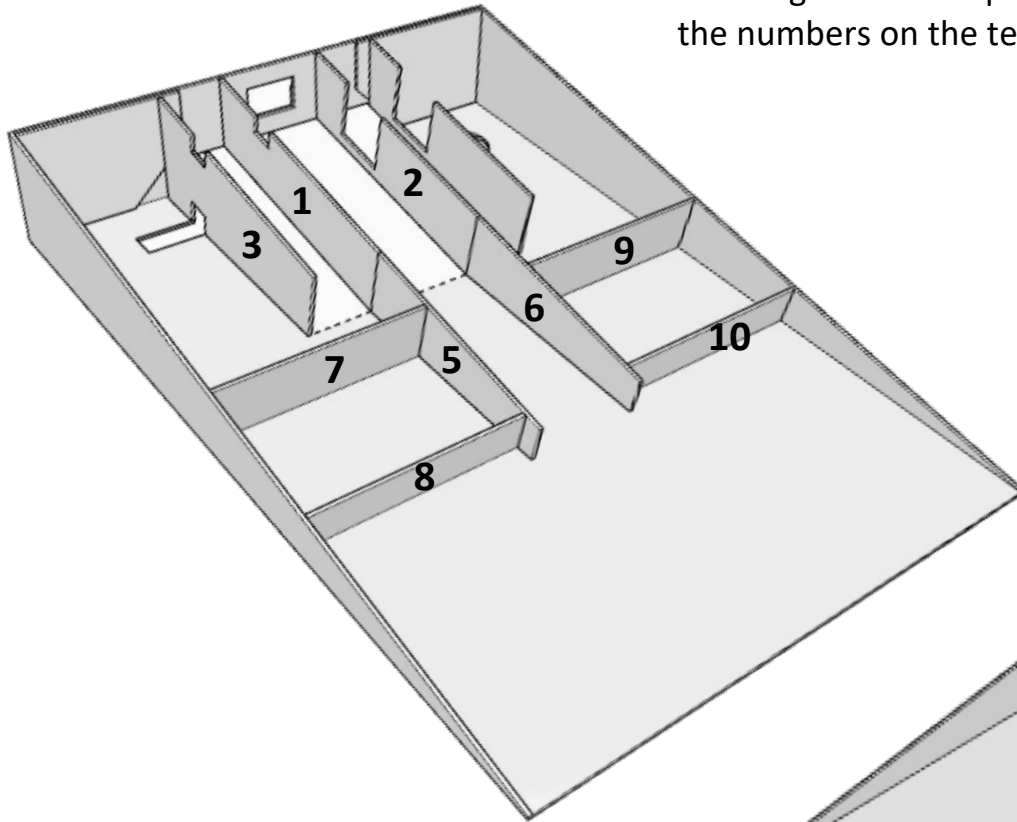
glue PART 3 piece 8 here ↴

PART 3



PART 3: Location of Pieces

The location of the numbers on each face in these diagrams corresponds with the direction the numbers on the templates should face.



PART 4: Vacuum

