

Paper Frontman Mask

engineered by:



Assembli

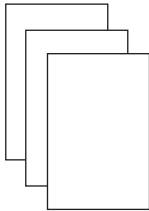
WWW.ASSEMBLISHOP.COM

Printable DIY
Template only for
NON COMMERCIAL
use and original
design by
Assembli



Printing

USE A4 SIZED PAPER WITH A PAPER WEIGHT OF 200 GRAMS. THIS IS STRONG ENOUGH TO DO THE JOB AND STAY NICE FOR QUITE SOME TIME. ALSO STILL ABLE TO CREASE AND FOLD NICELY.



Cutting

CUT OUT ALL THE CONTINUOUS OUTLINES TO CREATE ALL THE PARTS FOR ASSEMBLING. USE YOUR SCISSORS OR EVEN BETTER, THIS KIND OF KNIFE:



(SAVES TIME & MORE ACURATE)

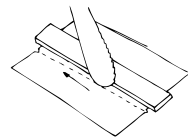


Score / Crease

THIS IS AN IMPORTANT STEP TO MAKE PERFECT FOLDS WITH HEAVY PAPER.

TRACE ALL THE FOLDING LINES WITH AN EMPTY BALLPOINT PEN, THE BACK OF A BUTTER-KNIFE, A FOLDING BONE, PAPERCLIP OR ANOTHER SCORING TOOL. A PROFESSIONAL SCORING TOOL IS RECOMMENDED.

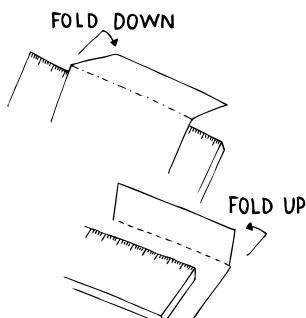
PLACE THE LATH ALONG THE FOLDING LINE AND DRAW YOUR TOOL ALONG THE EDGE. PUSH FIRM AND PRACTICE WITH PAPER LEFTOVERS FOR BEST RESULT.



Folding

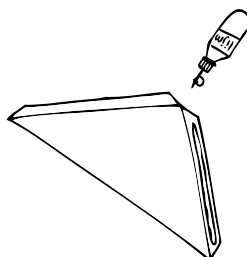
USE YOUR RULER ON THE EDGE OF YOUR TABLE WHEN FOLDING DOWN.

----- FOLD UP
----- FOLD DOWN



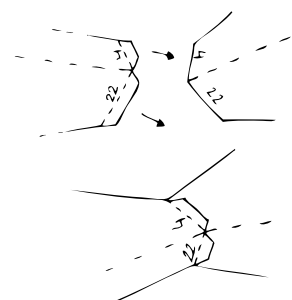
Glue

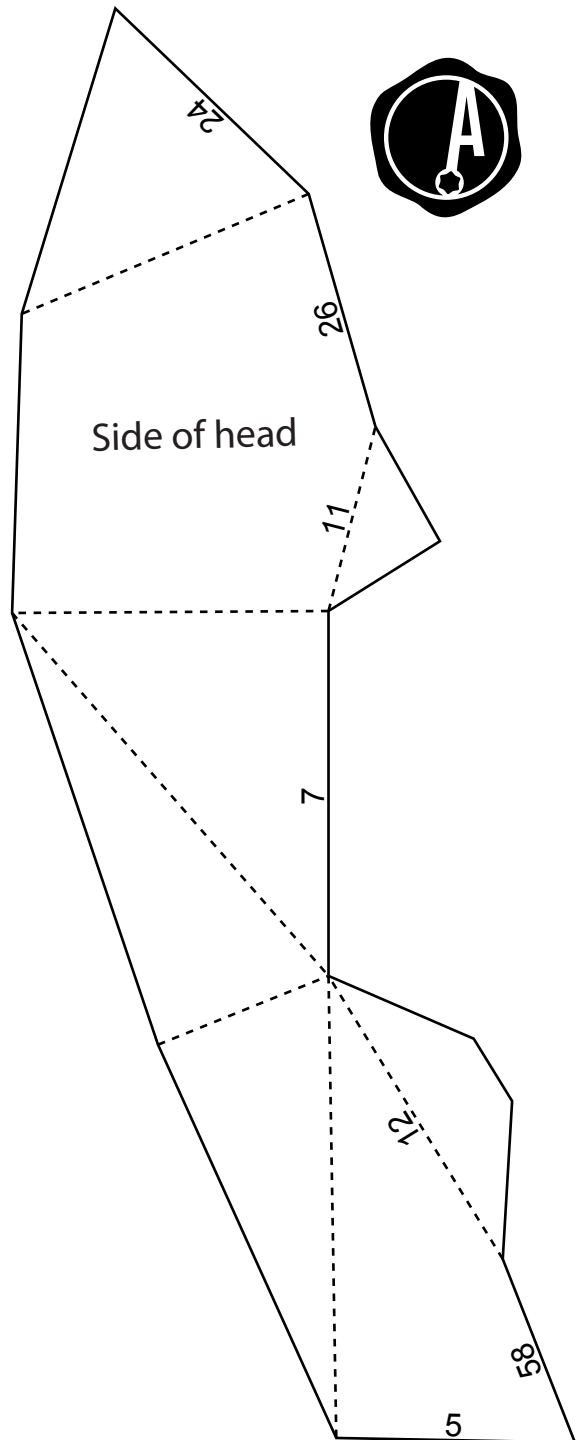
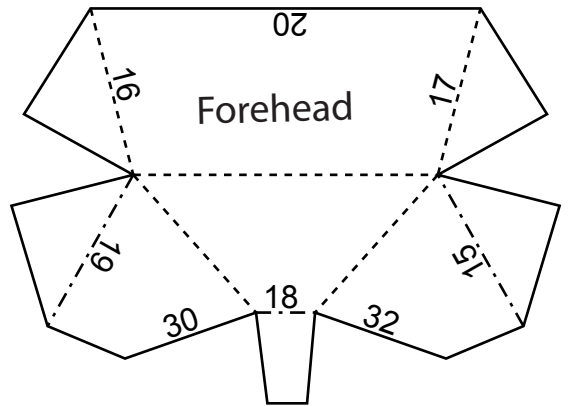
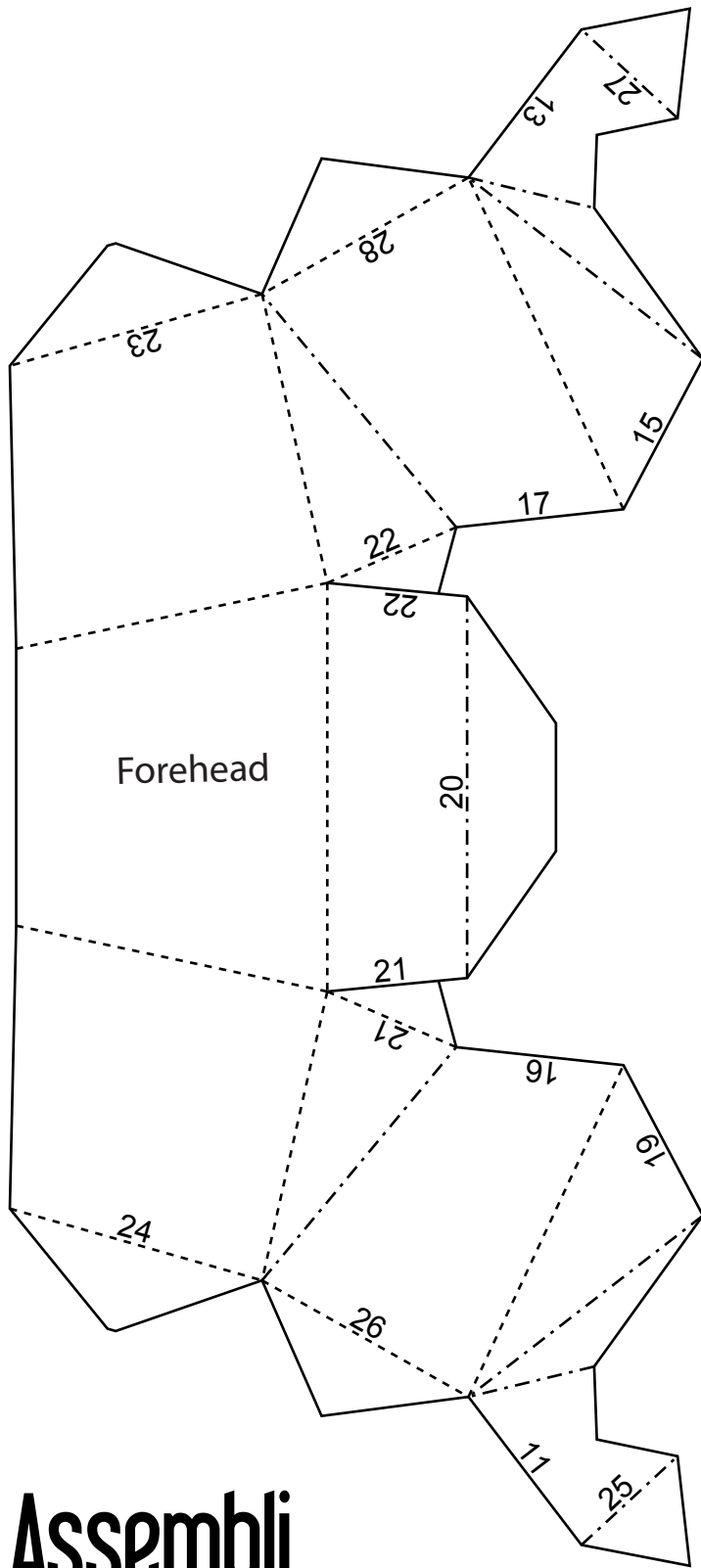
ADD A SMALL STRIP OF GLUE ON A TAB AND LET IT DRY FOR A FEW SECONDS. PLACE THE TAB ON THE CORRESPONDING PAPER PART, PUSH AND HOLD IT FOR A MOMENT. GLUE TABS ONE BY ONE.



Assembling

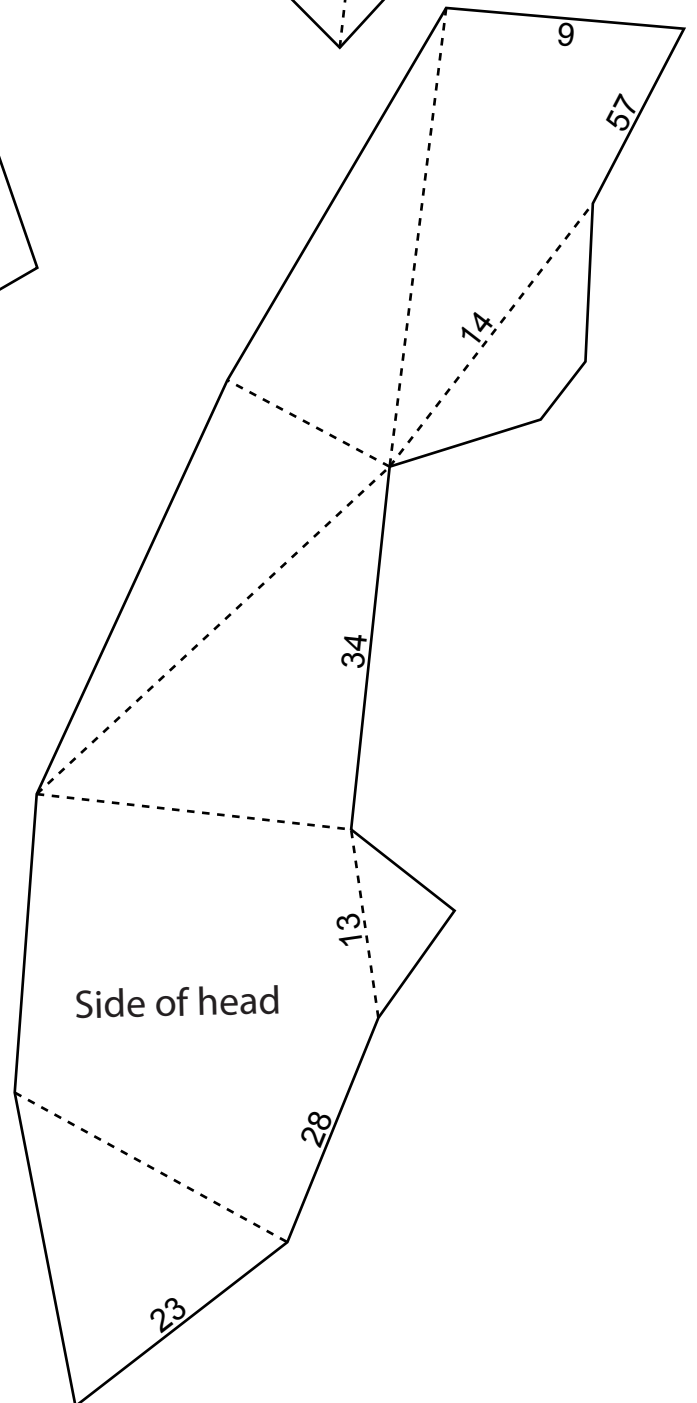
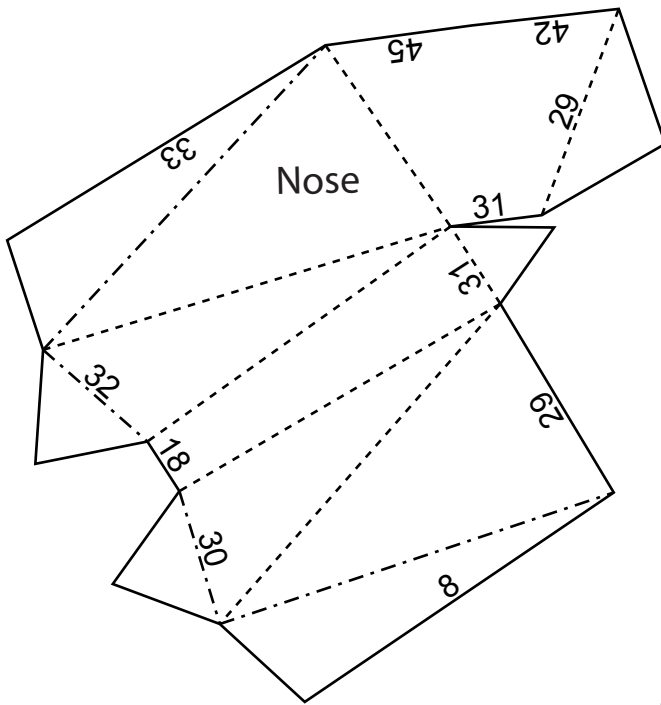
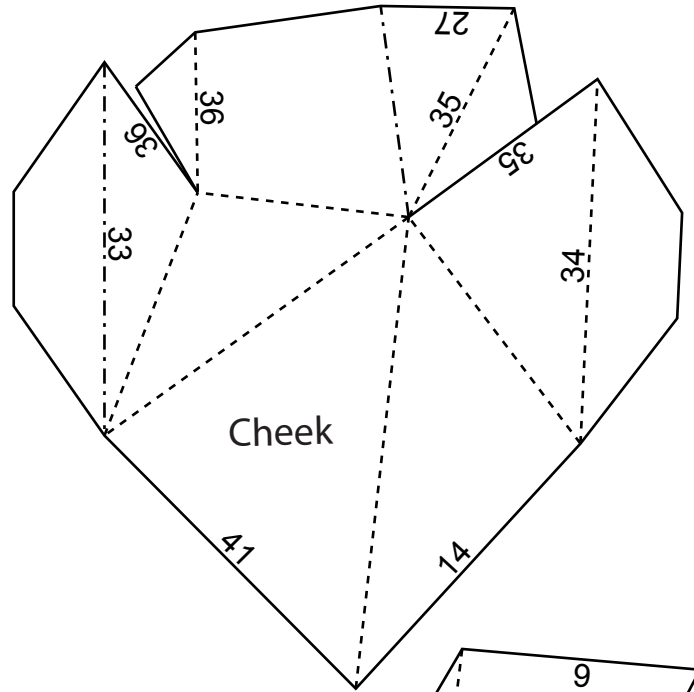
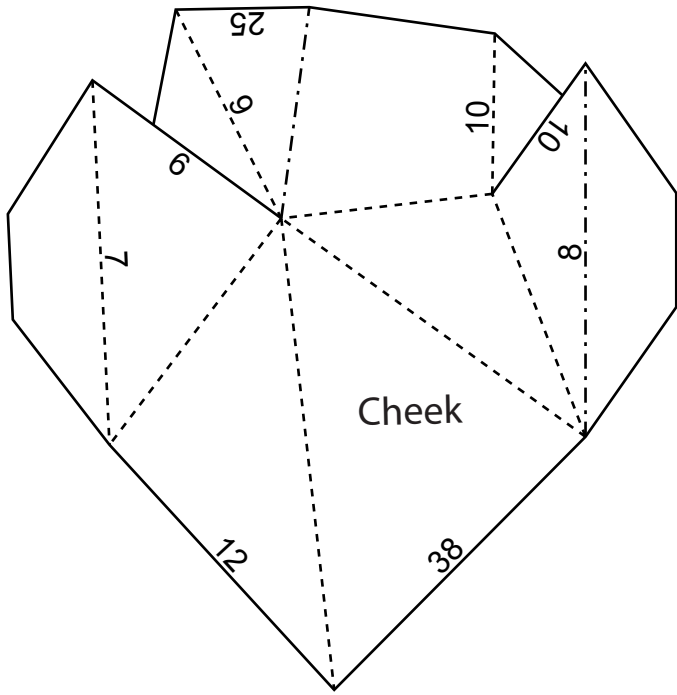
ALL NUMBERS INDICATE THE PLACE FOR CORRESPONDING TABS. THEY ARE NOT NUMBERED CHRONOLOGICALLY SO DON'T MIND THE RANKING. WHILE YOUR GLUEING AND HOLDING THE TABS, IT'S ADVISED TO USE THE TABLE AS MUCH AS POSSIBLE.





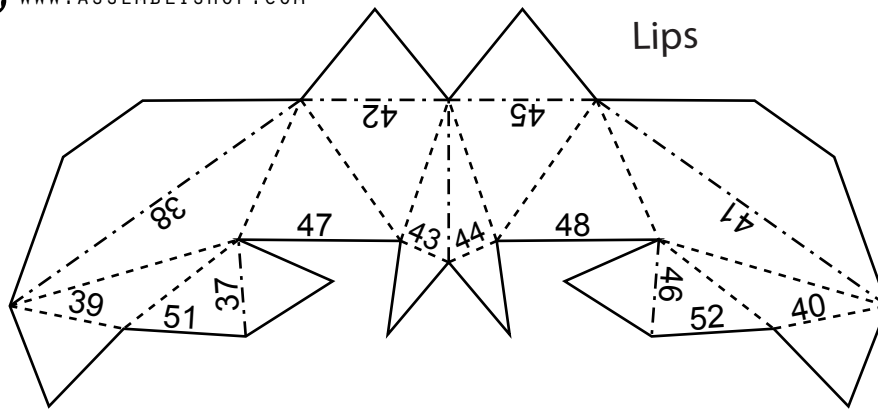
Assembli
WWW.ASSEMBLISHOP.COM

DIY Template only for
NON COMMERCIAL
use and original design
by Assembli

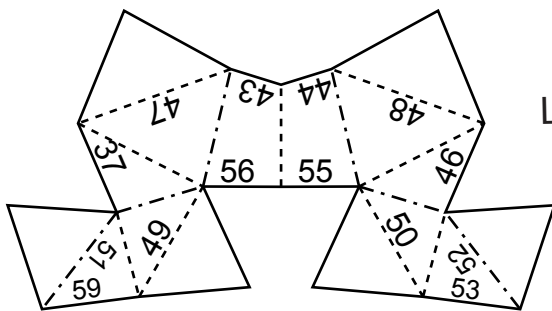


Assembli
WWW.ASSEMBLISHOP.COM

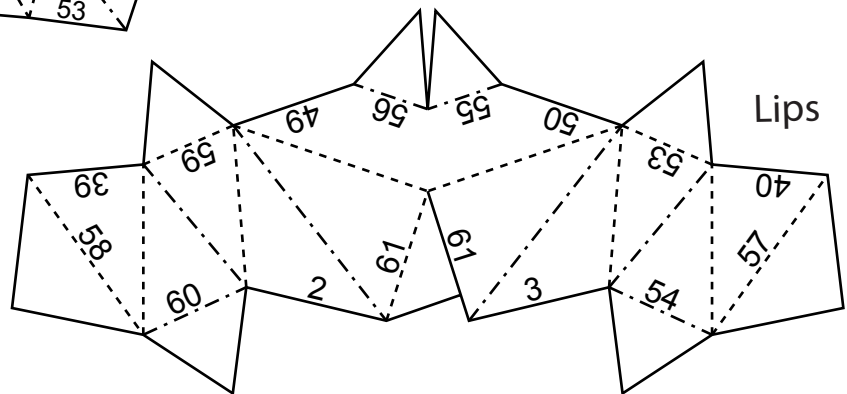
DIY Template only for
NON COMMERCIAL
use and original design
by Assembli



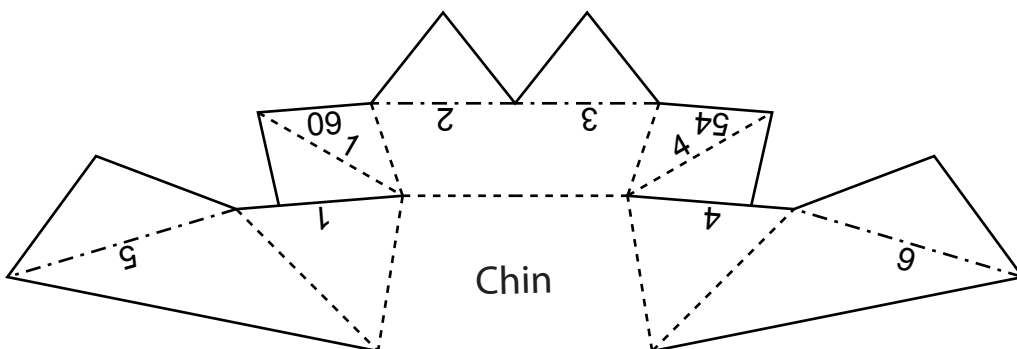
Lips



Lips



Lips



Chin

These parts are very small and best to start with. In case you don't succeed right away you could print them out again and have a fresh start