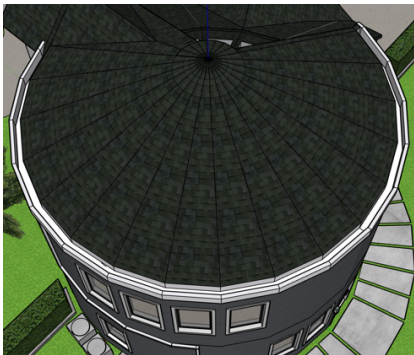
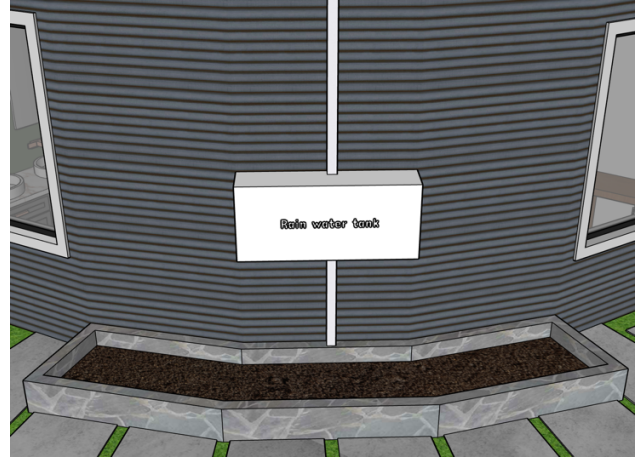
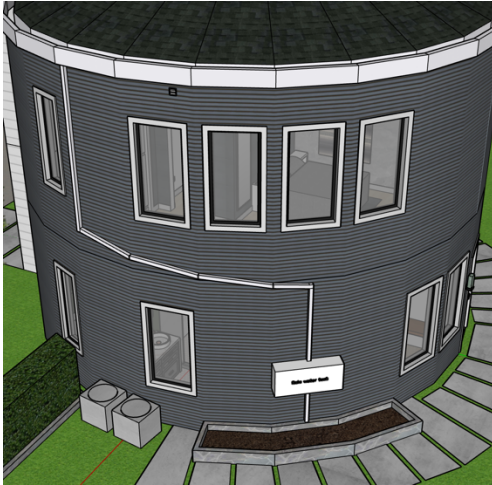


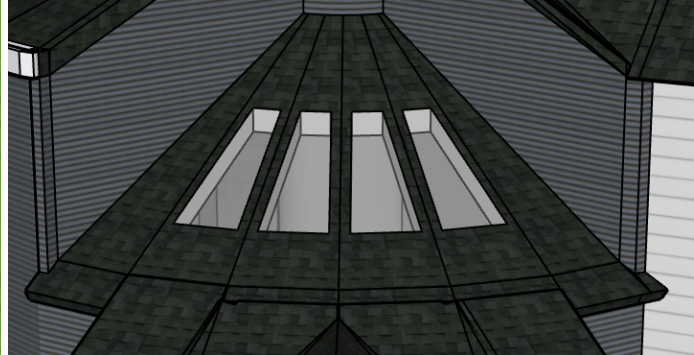
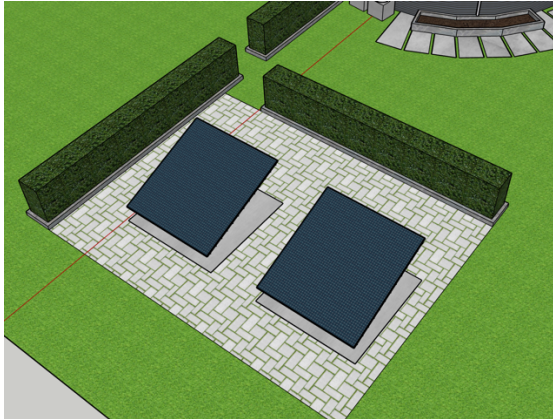
- Rainwater tank: This tank works to collect rain the comes off the roof using gutters to funnel it into a tank where it can be stored or used to water your garden and help grow your own plants.



- Laundry Jet System: This was installed in the house because the laundry room is on the loft floor so it would be extremely difficult to bring your clothes up a ladder to the washer and dryer. The solution is high powered laundry jet system that takes your clothes from the main bedroom to the laundry room and works in both directions.



- Solar panels: These solar panels help the house reach its full potential to be eco-friendly by taking energy from the sun and powering the whole house. These are located in the yard next to the house due to the curved and complex angles of the roof. This configuration also allows you to customize the solar panel layout based on your energy needs. Another added benefit to having the solar panels in the yard is the space to install skylights on the roof.



- HVAC/ Heat pump, and electrical panel: These are all major features within this tiny home. They were strategically placed to be at the most convenient/ accessible space as possible without intruding into the living space. With the HVAC/ heat pump being located on the center column in the middle of the home it allows for increased efficiency and easy maintenance access. The position of the wide angled vents allow air to flow everywhere throughout the home. The electrical panel is at a convenient access point placed in the broom closet in between the living room and the kitchen.

