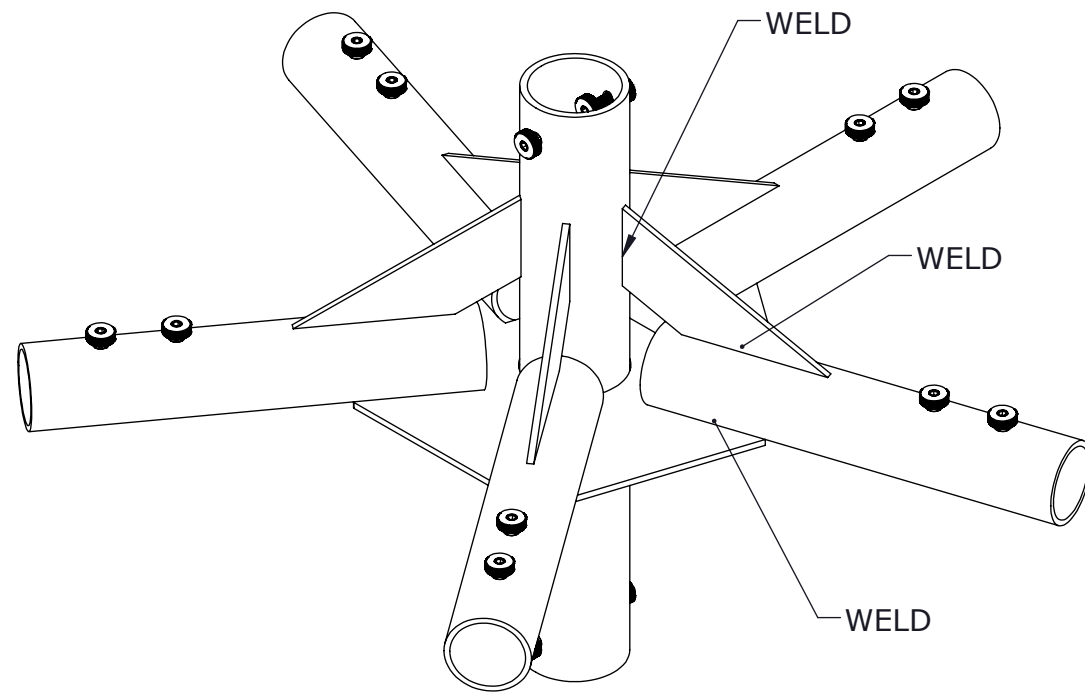


REVISION HISTORY				
REV	DESCRIPTION	ECO	DATE	BY
01	PROTOTYPE RUN	--	7/16/2015	WB

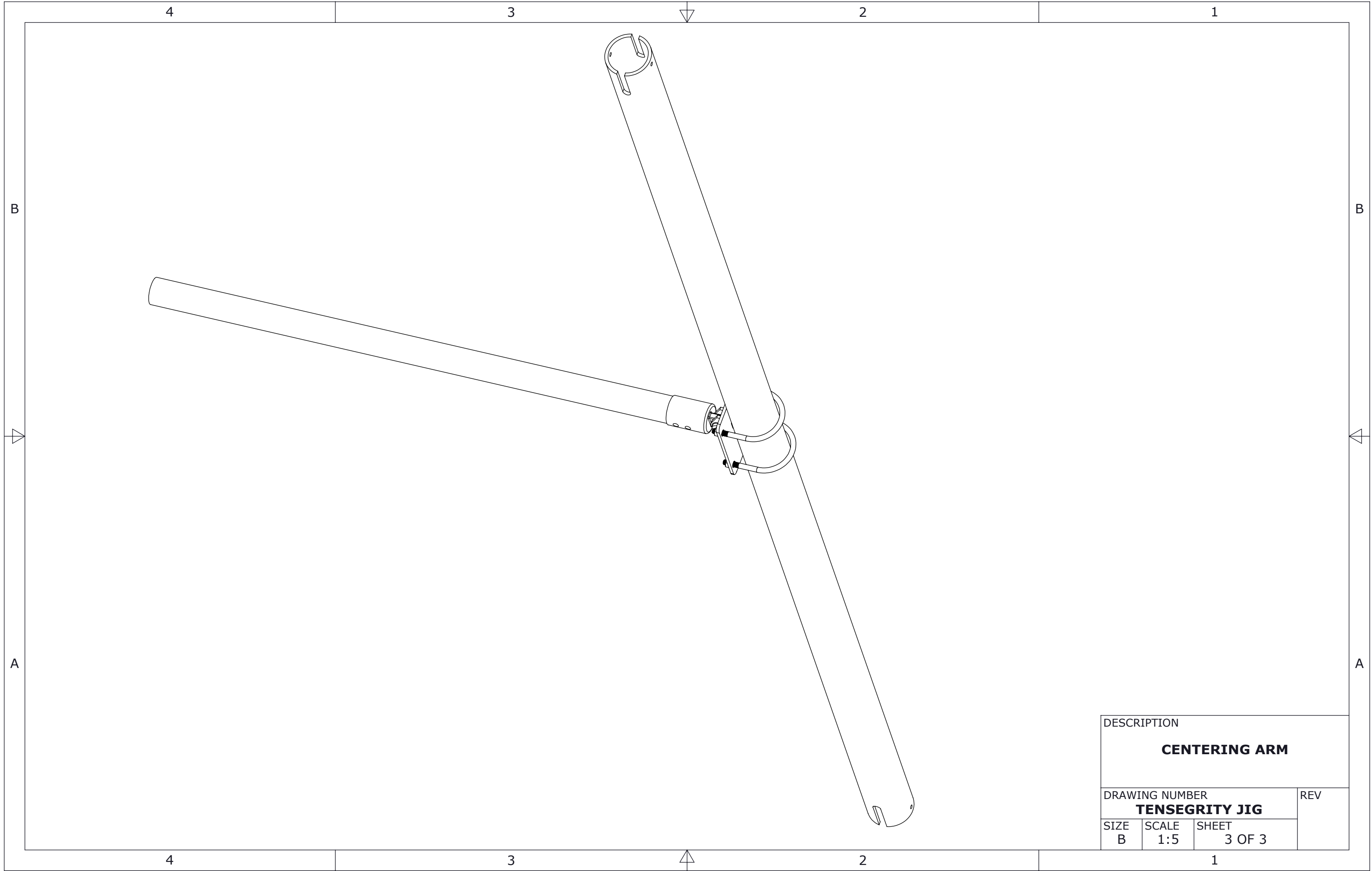
ITEM	PART NUMBER	DESCRIPTION	QTY.
1	3201T35	U-Bolt, Black Oxide Steel, 5/16"-18 Thread Size, 3" ID, 3 11/16" Height	30
2	95185A205	Press-in Nut for Sheet Metal, 1/4"-20 Thread Size, for 0.125" Minimum Panel Thickness	42
3	98704A620	Plastic Knurled Head Screw	48
4	WOODEN SPOOL	--	1
5	ZEP POST MOUNT KEY	--	15
6	ZEP POST MOUNT BRACKET	--	30
7	ZEP TUBE HEAD	--	15
8	1.5IN EMT STEEL TUBING	40IN	5
9	1.5IN EMT STEEL TUBING	36IN	10
10	2.5in SCHED 40 STEEL PIPE	18IN	3
11	2IN SCHED 40 STEEL PIPE	10FT	1
12	2IN SCHED 40 STEEL PIPE	1 FT	15
13	MOUNTING PLATE	3/16IN CNC PLATE	15
14	BASE PLATE GUSSET	3/16" CNC PLATE	15
15	BASE PLATE	3/16" CNC PLATE	3
16	2.5IN SCHED 40 ALUMINUM PIPE	TENSEGRITY TUBE	15

DESCRIPTION			
TENSEGRITY JIG			
DRAWING NUMBER			REV
TENSEGRITY JIG			01
SIZE	SCALE	SHEET	
B	1:20	1 OF 3	



ITEM	PART NUMBER	DESCRIPTION	QTY.
1	BASE PLATE	3/16" CNC PLATE	1
2	2.5in SCHED 40 STEEL PIPE	18IN	1
3	95185A205	Press-in Nut for Sheet Metal, 1/4"-20 Thread Size, for 0.125" Minimum Panel Thickness	14
4	98704A620	Plastic Knurled Head Screw	16
5	TELESCOPING LEG FEMALE	1 FT	5
6	BASE PLATE GUSSET	3/16" CNC PLATE	5

DESCRIPTION			
HUB, CENTRAL			
DRAWING NUMBER			REV
TENSEGRITY JIG			01
SIZE	SCALE	SHEET	
B	1:5	2 OF 3	



DESCRIPTION			
CENTERING ARM			
DRAWING NUMBER			REV
TENSEGRITY JIG			
SIZE	SCALE	SHEET	
B	1:5	3 OF 3	