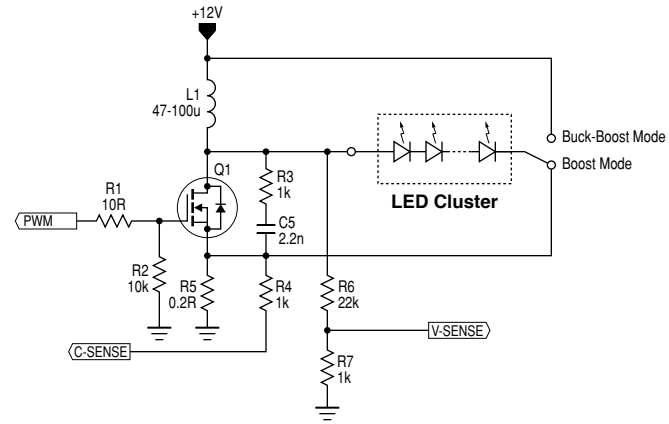
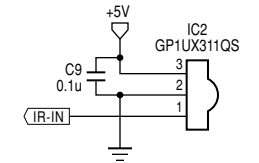


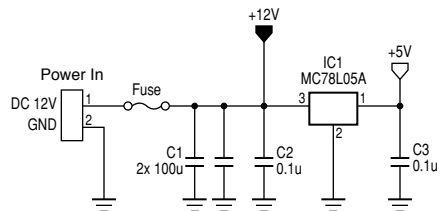
**Main Controller**



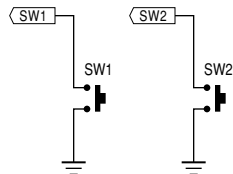
**LED Driver**



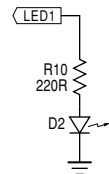
**IR Receiver**



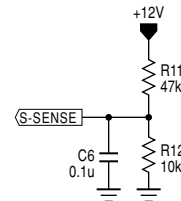
**Power Supply**



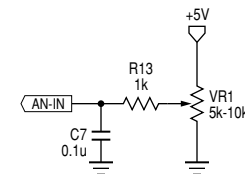
**Buttons**



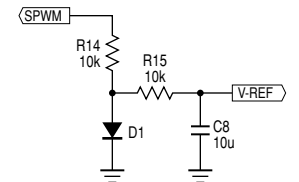
**Status Light**



**Supply Voltage Sense**



**Brightness Control**



**Reference Voltage Generator**

**BOM**

- 1x 0.2 ohm (5x 1 ohm in parallel)
- 1x 10 ohm
- 3x 220 ohm
- 4x 1k ohm
- 4x 10k ohm
- 1x 22k ohm
- 1x 47k ohm
- 1x 10k ohm Potentiometer
- 1x 2.2nF (2200pF)
- 6x 0.1uF
- 1x 10uF
- 2x 47 - 100uF / 25V or higher

- 1x 47 - 100uH Power Inductor
- 1x NTD5867NL (N-MOSFET)
- 1x 1N4148
- 1x 2A Fast-blow Fuse
- 1x MC78L05A or equivalent
- 1x PIC16F1823

- 1x LED (D2)
- 1x GP1UX311QS (optional)
- 2x Tactile Switch (optional)

Title <b>Universal High Power LED Driver</b>		
Date 12/14/2011	Rev. 2F	Sheet 1 of 1
Designed by Akimitsu Sadoi		