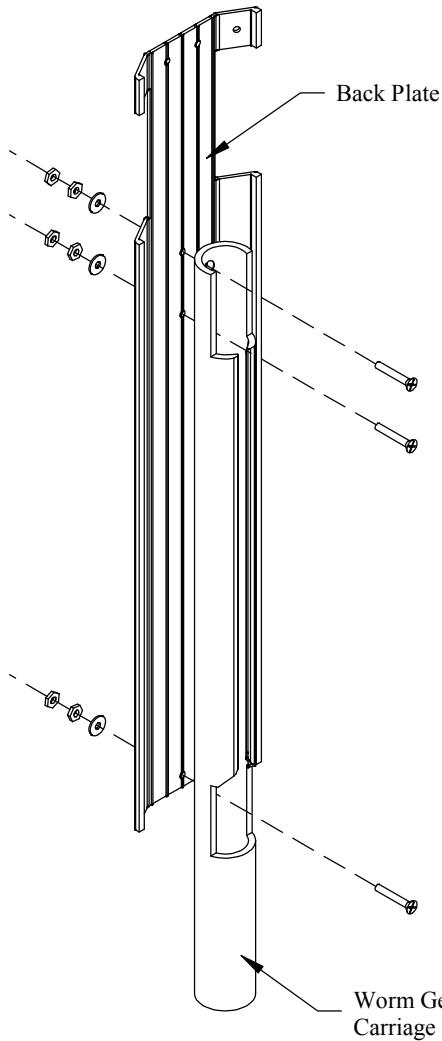
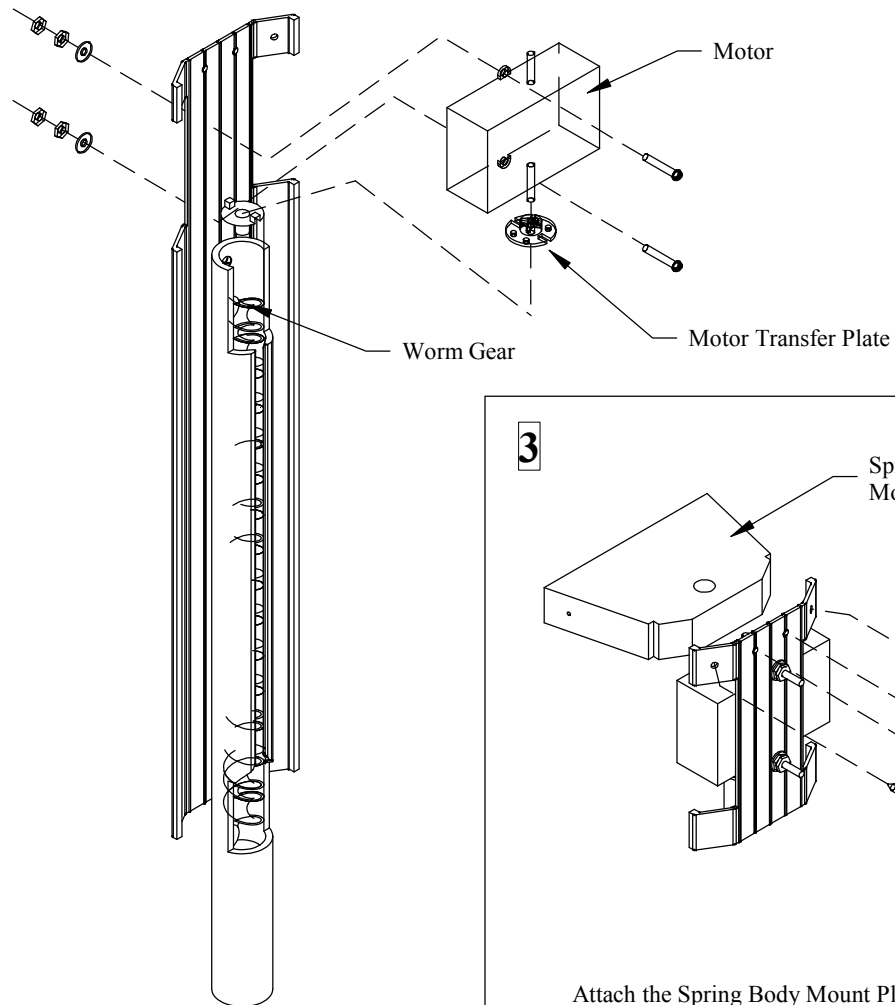


1



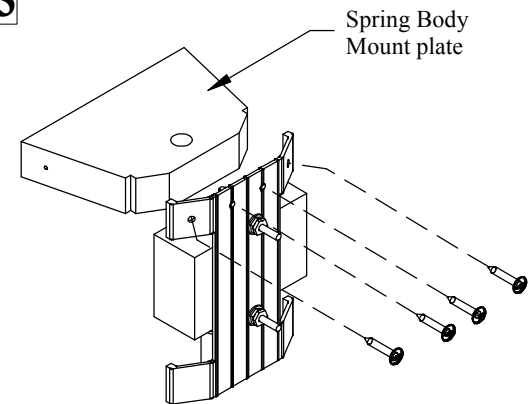
Fasten the Worm Gear Carriage to the Back Plate using 2 #6-32 x 3/4" flat head screws, washers, and 2 nuts for each screw.

2



Insert the worm gear into the Worm Gear Carriage. Fit the Motor and Motor Transfer Plate onto the Worm Gear. Mark and drill the two 1/8" holes for the motor mount. Mount the motor to the Back Plate using 2 #6-32 x 1/2" round head screws, washers and two nuts for each screw.

3



Attach the Spring Body Mount Plate to the Back Plate using 4 #6 x3/4" round head wood screws.

### Upper Body Assembly

**Materials:**

- 1- Body Plate
- 1- Worm Gear
- 1- Worm Gear Carriage (Assembly )
- 1- Spring Body Mount Plate
- 1- Motor
- 1- Motor Transfer Plate

- 3- #6-32 x3/4" flat head machine screws
- 4- #6 x4/4" round head wood screws
- 2- #6-32 x 1/2" round head machine screws
- 5- #6 flat washers
- 10- #6-32 nuts