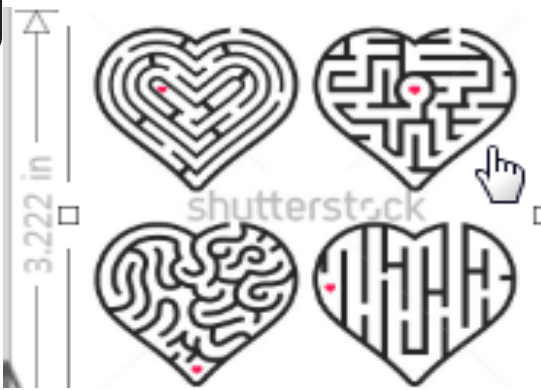


GRAPHTEC VINYL CUTTER FILE SET UP

A QUICK-START STEP BY STEP GUIDE

1

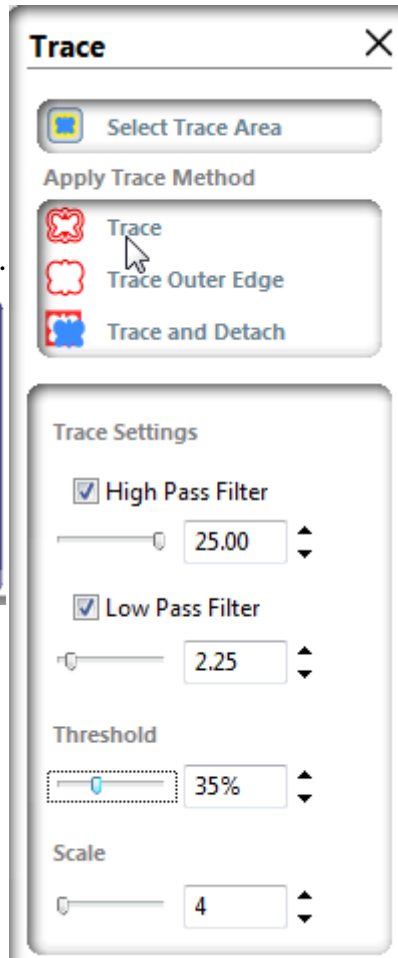
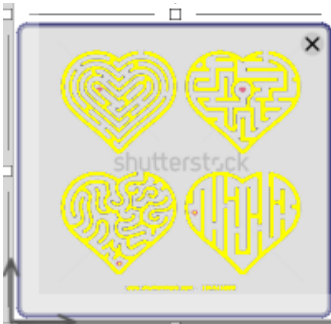


- Start GraphTec Studio and File>Open your design.
- Vectors must have a stroke weight of 0.001pt.
 - Design in any program that will export a .dxf or .eps file.
 - Graphtec accepts JPGs and other raster images, however they must be converted to vector lines before cutting.

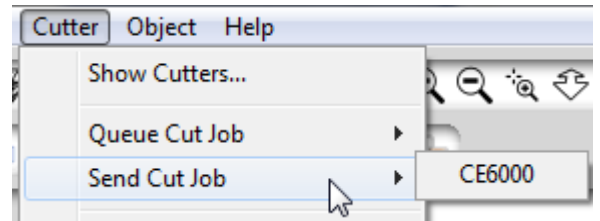
I am using this heart maze JPG I stole from the internet.

2

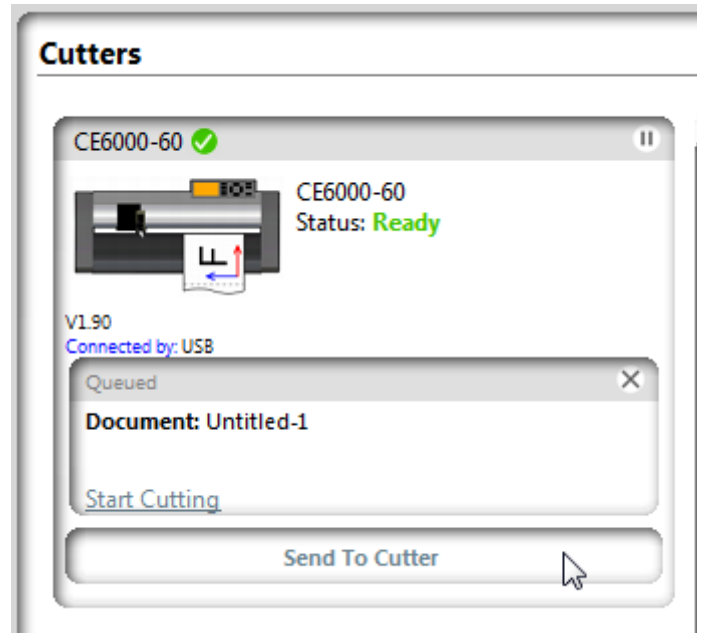
- Tracing the JPG:
Object > Trace
Click "Select Trace Area."
Box-select graphic.
Adjust settings.
Click "Trace" button.



3

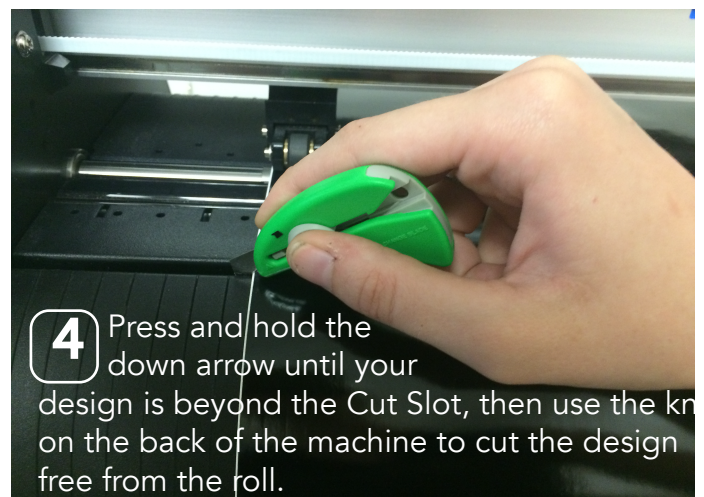
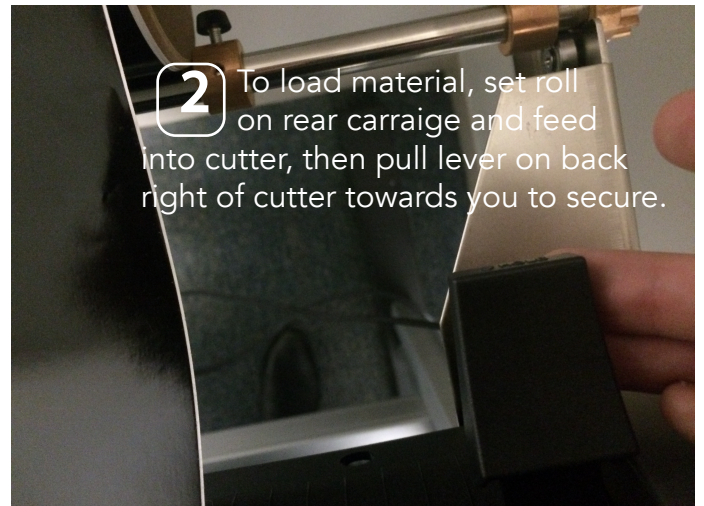


Once your design is ready, make sure the machine is on and your material is loaded. (Refer to machine set up handout.) Click Cutter>Send Cut Job>CE6000. "Cutters" menu will open on the right side of the screen. Click "Send to Cutter."



GRAPHTEC VINYL CUTTER MACHINE SET UP

A QUICK-START STEP BY STEP GUIDE



TIPS AND TRICKS

- The vinyl cutter is vector only, treats all colors equally, and cannot raster.
- Create vector files in Illustrator, Inkscape, or any program that exports an .eps or .dxf file.
- The vinyl cutter can print raster files as .PDF, see the tutorial on lisamoren.wix.com for file preparation.
- Use a stroke weight of .001pt. Thicker will lead to cutting double lines.
- Double check your file for extra lines, double lines, or vector knots.
- When you load material, you will be prompted to select your desired position. For most rolls, select "Front Edge." If you are cutting scrap material, select "Current Position."
- If you spritz the surface you are applying the vinyl to with water, you will have a little more leeway to move the sticker after you have applied it. Wait for the water to evaporate before attempting to move the transfer tape.

VINYL STICKER WEEDING AND INSTALL



