

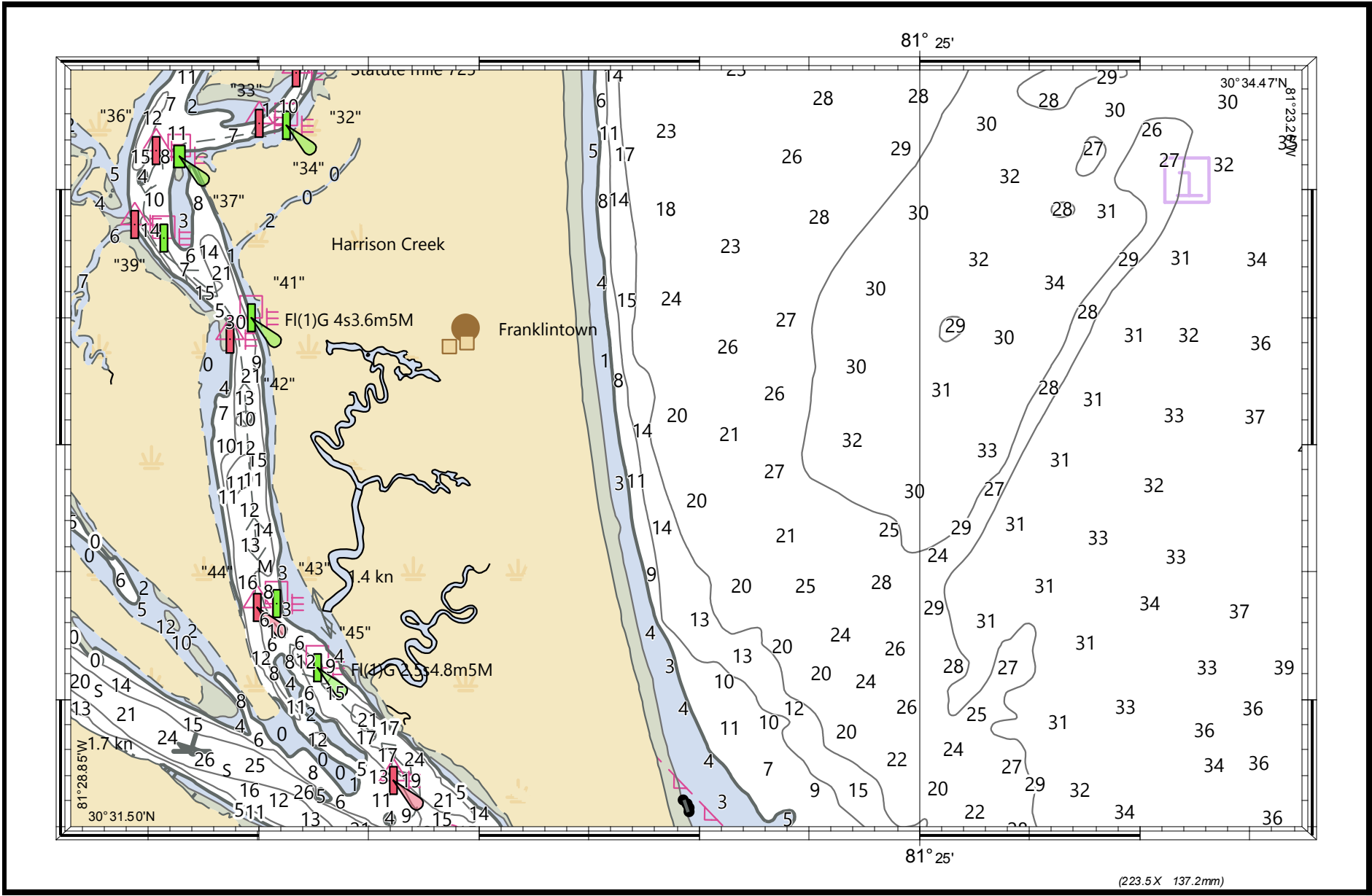
SAMPLE CHART : NOT FOR NAVIGATION
Walker's Landing, Amelia Island FL

UNITS IN FEET

WGS 84

SAMPLE CHART : NOT FOR NAVIGATION

SAMPLE CHART : NOT FOR NAVIGATION



WGS 84

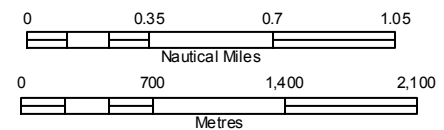
Generation Date: 07 July 2020

SAMPLE CHART : NOT FOR NAVIGATION

UNITS IN FEET



Projection Information
WGS 1984 World Mercator (Calculated)
SCALE 1:40000 at Lat. 30°32.24'
GCS WGS 1984



CAUTION - FISH HAVENS

Numerous uncharted Fish Havens, some marked by privately buoys, exist seaward of the 10-fathom curve. See larger scale charts for location.

HURRICANES AND TROPICAL STORMS

Hurricanes, tropical storms and other major storms may cause considerable damage to marine structures, aids to navigation and moored vessels, resulting in submerged debris locations. Charted soundings, channel depths and shoreline may not reflect actual conditions following these storms. Fixed aids to navigation may have been damaged or destroyed. Buoys may have been moved from their charted positions, damaged, sunk, extinguished or otherwise made inoperative. Mariners should not rely upon the position or operation of an aid to navigation. Wrecks and submerged obstructions may have been displaced from charted locations. Pipelines may have become uncovered or moved. Mariners are urged to exercise extreme caution and are requested to report aids to navigation discrepancies and hazards to navigation to the nearest United States Coast Guard unit.

SUBMARINE PIPELINES AND CABLES

Additional uncharted submarine pipelines and submarine cables may exist within the area of this chart. Not all submarine pipelines and submarine cables are required to be buried, and those that were originally buried may have become exposed. Mariners should use extreme caution when operating vessels in depths of water comparable to their draft in areas where pipelines and cables may exist, and when anchoring, dragging, or trawling.