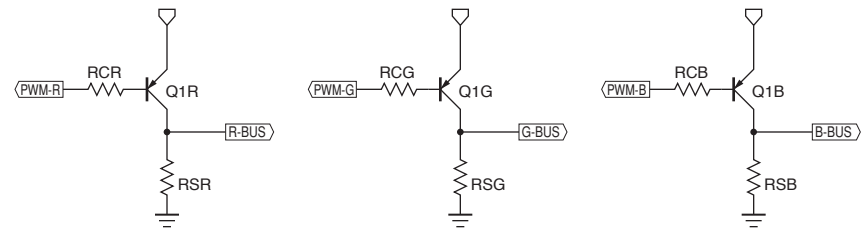
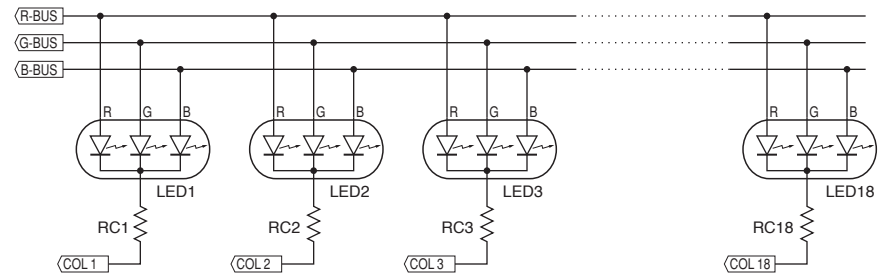


R1: 10 - 22k ohm
 C1, C3: 10uF
 C2, C4: 0.1uF

PWM-R/G/B and COL1 - 18 are active-low.



Q1x: MMBT2907A
 RCx: 180 - 220 ohm
 RSx: 2.2k ohm



RC1 - 18: 150 ohm

BOM

- 1x 10k ohm (0603)
- 3x 220 ohm (0603)
- 3x 2.2k ohm (0603)
- 18x 150 ohm (0603)
- 2x 0.1uF (0603)
- 2x 10uF (1206)
- 3x Q1x: MMBT2907A
- 1x PIC24FV16KA302
- 18x Tricolor LED (common-cathode)
- 1x Tactile Switch

Title Aurora 18 mini mk2		
Date 08/07/2011	Rev. 2	Sheet 1 of 1
Designed by Akimitsu Sadoi		