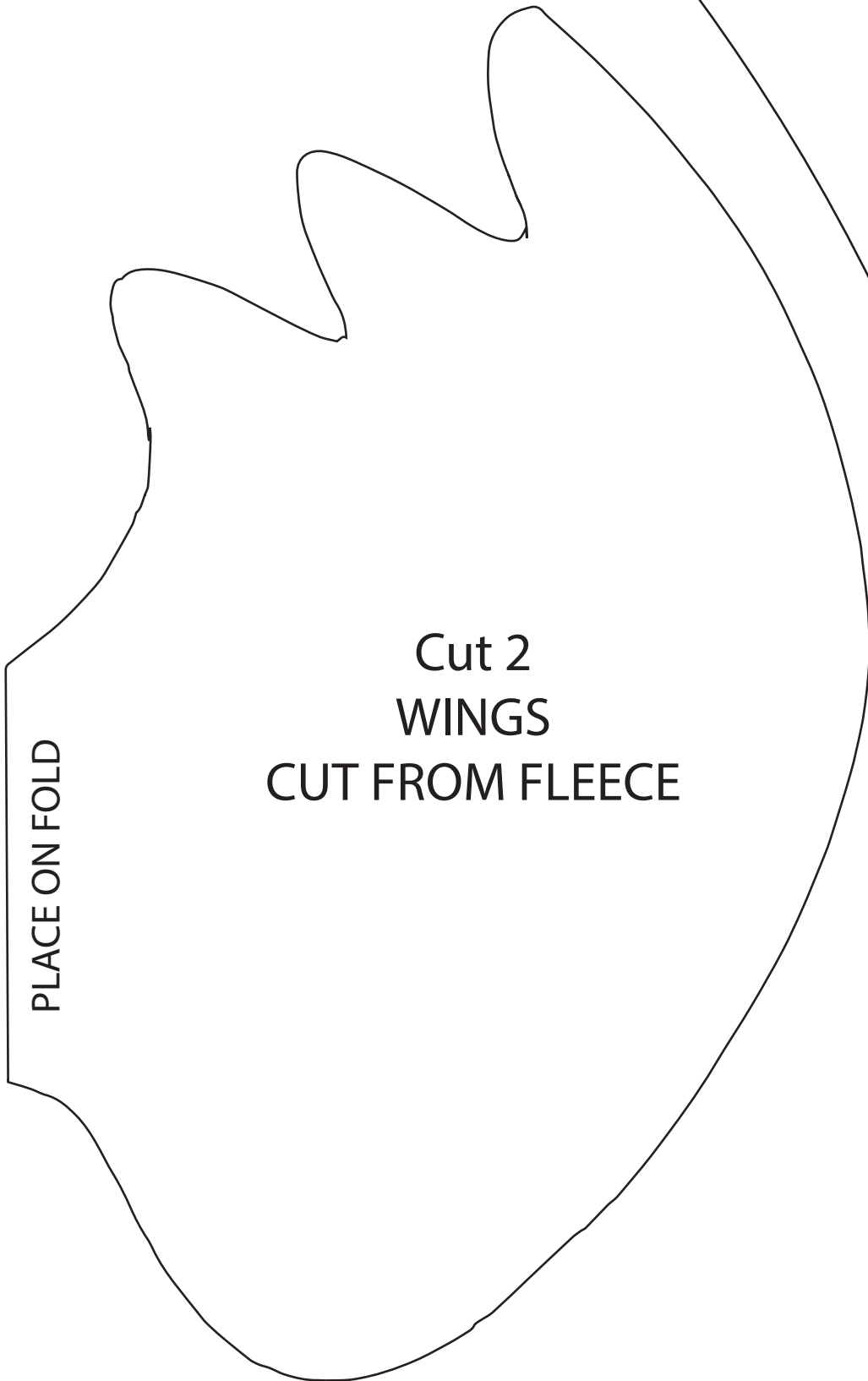


1A



Cut 2
WINGS
CUT FROM FLEECE

PLACE ON FOLD

Cut 4
BELLY STRAP
CUT OUT OF FLEECE

Cut 2
EYE
GREEN FELT

Cut 2
WHITE
FELT

Cut 2
BLACK
FELT

Cut (4) * 2 in reverse
FEET
CUT OUT OF FELT

Cut 2
TAIL
CUT OUT OF FLEECE

