

# DVD Player

DVP3126(K), DVP3146(K), DVP3148K

Service

DVP3126/94/96/98/51, DVP3126X/94

DVP3126K/56/93/96/98/61/51

Service

DVP3146/94, DVP3146X/94

DVP3146K/93/96/98

DVP3148K/51

# Service



# Service Manual

## TABLE OF CONTENTS

|  | Chapter |
|--|---------|
| . Technical Specifications.....                            | 1-2     |
| . Safety Instruction, Warning & Notes.....                 | 1-3     |
| . Mechanical and Dismantling Instructions.....             | 2-1     |
| . Region Code, Software Version & Upgrades.....            | 3-1     |
| . Trouble Shooting Chart.....                              | 4-1     |
| . Wiring Diagram.....                                      | 5-1     |
| . Electrical Diagrams and Print-layouts.....               | 6-1     |
| . Set Mechanical Exploded View & Electrical Part list..... | 7-1     |
| . Electrical Parts List.....                               | 8-1     |
| . Revision List.....                                       | 9-1     |

©Copyright 2007 Philips Consumer Electronics B.V. Eindhoven, The Netherlands  
All rights reserved. No part of this publication may be reproduced, stored in a retrieval system or transmitted, in any form or by any means, electronic, mechanical, photocopying, or otherwise without the prior permission of Philips.

Published by TCL-ET 0735 Service Audio Printed in The Netherlands Subject to modification

Version 1.2

**CLASS 1  
LASER PRODUCT**



3139 785 32882

# PHILIPS

## Technical Specifications

### TV standard (PAL/50Hz) (NTSC/60Hz)

|                 |                |            |
|-----------------|----------------|------------|
| Number of lines | 625            | 525        |
| Playback        | Multi standard | (PAL/NTSC) |

### Video performance

|              |                    |
|--------------|--------------------|
| Video DAC    | 12 bit, 108MHz     |
| YPbPr        | 0.7Vpp ---- 75 ohm |
| Video output | 1Vpp ----- 75 ohm  |

### Video format

|                     |   |
|---------------------|---|
| Digital Compression | MPEG 2 for DVD,SVCD<br>MPEG 1 for VCD<br>DivX® (For DVP3146/94,DVP3146K/98) |
|---------------------|---|

| DVD                 | 50Hz       | 60Hz       |
|---------------------|------------|------------|
| Horiz resolution    | 720 pixels | 720 pixels |
| Vertical resolution | 576lines   | 480 lines  |

| VCD                 | 50Hz       | 60Hz       |
|---------------------|------------|------------|
| Horiz. resolution   | 352 pixels | 352 pixels |
| Vertical resolution | 288lines   | 240 lines  |

### Audio format

| Digital | MPEG/AC-3/<br>PCM | Compressed<br>Digital<br>16, 20, 24bits<br>fs, 44.1, 48, 96kHz      |
|---------|-------------------|---|
|         | MP3(ISO 9660)     | 96,112,128,256,320kbps<br>& variable bit rate fs,32,<br>44.1,48 kHz |

Analogue Sound Stereo

Dolby surround compatible downmix from Dolby Digital multi-channel sound

### Audio performance

|                         |  |
|-------------------------|--|
| DA converter            | 24bits, 192KHz                                   |
| DVD                     | fs 96kHz 4Hz----44kHz<br>fs 48kHz 4Hz----22kHz   |
| SVCD                    | fs 48kHz 4Hz----22kHz<br>fs 44.1kHz 4Hz----20kHz |
| CD/ VCD                 | fs 44.1kHz 4Hz----20kHz                          |
| Signal-Noise (1kHz)     | >90dB  |
| Dynamic Range (1kHz)    | >80dB  |
| Cross talk (1kHz)       | >70dB  |
| Distortion/Noise (1kHz) | >65dB  |
| MPEG MP3                | MPEG Audio L3                                    |

6 Channal analog ouput

|                 |                   |
|-----------------|-------------------|
| Audio Front L/R | Cinch( White/Red) |
| Audio Rear L/R  | Cinch( White/Red) |
| Audio Center    | Cinch( Blue)      |
| Audio Subwoofer | Cinch(Black)      |

### Connections

|                     |  |
|---------------------|--|
| YPbPr output        | Cinch 3x   |
| Video output        | Cinch( yellow)   |
| Audio output (L+R ) | Cinch( white/red)  |
| Digital output      | 1 coaxial<br>IEC60958 for CDDA/ LPCM<br>IEC61937 for MPEG1/2,<br>Dolby Digital |

### Cabinet

|                        |                                      |
|------------------------|--------------------------------------|
| Dimensions (w X h X d) | 360 x 37 x 209 mm /360 x 38 x 209 mm |
| Weight                 | Approximately 1.35kg                 |

### Power consumption

|                                   |                        |
|-----------------------------------|------------------------|
| Power supply Rating               | 110V -240V;<br>50/60HZ |
| Power consumption                 | <10W                   |
| Power consumption in standby mode | <1W                    |

**Specifications subject to change without prior notice.**


# Safety instruction, Warning & Notes

## Safety instruction

---

### 1. General safety

Safety regulations require that during a repair:

- . Connect the unit to the mains via an isolation transformer.
- . Replace safety components indicated by the symbol , only by components identical to the original ones. Any other component substitution (other than original type) may increase risk of fire or electrical shock hazard.

Safety regulations require that after a repair, you must return the unit in its original condition. Pay, in particular, attention to the following points:

- . Route the wires/cables correctly, and fix them with the mounted cable clamps.
- . Check the insulation of the mains lead for external damage.
- . Check the electrical DC resistance between the mains plug and the secondary side:
  - 1) Unplug the mains cord, and connect a wire between the two pins of the mains plug.
  - 2) Set the mains switch the "on" position (keep the mains cord unplug).
  - 3) Measure the resistance value between the mains plug and the front panel, controls, and chassis bottom.
  - 4) Repair or correct unit when the resistance measurement is less than  $1M\Omega$ .
  - 5) Verify this, before you return the unit to the customer/user (ref. UL-standard no. 1492).
  - 6) Switch the unit "off", and remove the wire between the two pins of the mains plug.

### 2.Laser safety

This unit employs a laser. Only qualified service personnel may remove the cover, or attempt to service this device (due to possible eye injury).

Laser device unit

Type : Semiconductor laser GaAlAs

Wavelength : 650nm (DVD)

: 780nm (VCD/CD)

Output power : 7mW (DVD)

: 10mW (DVD /CD)

Beam divergence: 60 degree

Note: Use of controls or adjustments or performance of procedure other than those specified herein, may result in hazardous radiation exposure. Avoid direct exposure to beam.

## Warning

---

### 1. General

. All ICs and many other semiconductors are susceptible to electrostatic discharges (ESD). Careless handling during repair can reduce life drastically. Make sure that, during repair, you are at the same potential as the mass of the set by a wristband with resistance. Keep components and tools at this same potential. Available ESD protection equipment:

- 1) Complete kit ESD3 (small tablemat, wristband, connection box, extension cable and earth cable) 4822 310 10671.
- 2) Wristband tester 4822 344 13999.

. Be careful during measurements in the live voltage section. The primary side of the power supply, including the heat sink, carries live mains voltage when you connect the player to the mains (even when the player is "off!"). It is possible to touch copper tracks and/or components in this unshielded primary area, when you service the player. Service personnel must take precautions to prevent touching this area or components in this area. A "lighting stroke" and a stripe-marked printing on the printed wiring board, indicate the primary side of the power supply.

. Never replace modules, or components, while the unit is "on".

### 2. Laser

- . The use of optical instruments with this product, will increase eye hazard.
- . Only qualified service personnel may remove the cover or attempt to service this device, due to possible eye injury.
- . Repair handling should take place as much as possible with a disc loaded inside the player.
- . Text below is placed inside the unit, on the laser cover shield:

**CAUTION: VISIBLE AND INVISIBLE LASER RADIATION WHEN OPEN, AVOID EXPOSURE TO BEAM.**


Notes: Manufactured under licence from Dolby Laboratories. The double-D symbol is trademarks of Dolby Laboratories, Inc. All rights reserved.

## Notes

### Lead-Free requirement for service

---

#### INDENTIFICATION:

Regardless of special logo (not always indicated) 

One must treat all sets from 1.1.2005 onwards, according next rules.

***Important note:** In fact also products a little older can also be treated in this way as long as you avoid mixing solder-alloys (leaded/ lead-free). So best to always use SAC305 and the higher temperatures belong to this.*

Due to lead-free technology some rules have to be respected by the workshop during a repair:

- Use only lead-free solder alloy Philips SAC305 with order code 0622 149 00106. If lead-free solder-paste is required, please contact the manufacturer of your solder-equipment. In general use of solder-paste within workshops should be avoided because paste is not easy to store and to handle.
- Use only adequate solder tools applicable for lead-free solder alloy. The solder tool must be able
  - To reach at least a solder-temperature of 400°C,
  - To stabilize the adjusted temperature at the solder-tip
  - To exchange solder-tips for different applications.
- Adjust your solder tool so that a temperature around 360°C – 380°C is reached and stabilized at the solder joint. Heating-time of the solder-joint should not exceed ~ 4 sec. Avoid temperatures above 400°C otherwise wear-out of tips will rise drastically and flux-fluid will be destroyed. To avoid wear-out of tips switch off un-used equipment, or reduce heat.
- Mix of lead-free solder alloy / parts with leaded solder alloy / parts is possible but PHILIPS recommends strongly to avoid mixed solder alloy types (leaded and lead-free). If one cannot avoid, clean carefully the solder-joint from old solder alloy and re-solder with new solder alloy (SAC305).

- Use only original spare-parts listed in the Service-Manuals. Not listed standard-material (commodities) has to be purchased at external companies.
- Special information for BGA-ICs:
  - always use the 12nc-recognizable soldering temperature profile of the specific BGA (for de-soldering always use highest lead-free temperature profile, in case of doubt)
  - lead free BGA-ICs will be delivered in so-called 'dry-packaging' (sealed pack including a silica gel pack) to protect the IC against moisture. After opening, dependent of MSL-level seen on indicator-label in the bag, the BGA-IC possibly still has to be baked dry. This will be communicated via AYS-website.  
Do not re-use BGAs at all.
- For sets produced before 1.1.2005, containing leaded soldering-tin and components, all needed spare-parts will be available till the end of the service-period. For repair of such sets nothing changes.
- On our website:  
[www.atyourservice.ce.Philips.com](http://www.atyourservice.ce.Philips.com)

You find more information to:

BGA-de-/soldering (+ baking instructions)

Heating-profiles of BGAs and other ICs used in Philips-sets

You will find this and more technical information within the "magazine", chapter "workshop news".  
For additional questions please contact your local repair-helpdesk.

## Mechanical and Dismantling Instructions

### Dismantling Instruction

---

The following guideline is a general instruction for how to dismantle the player, Detailed operation done according the set unit.

**Step1:** Remove 5 screws around the Top Cover, then remove the Top Cover (Figure 1).



Figure 1

**Step2:** If it is necessary to dismantle Loader or Front Panel, It should be remove the Front door assembly first. (Figure 2)

Note: Make sure to operate gently otherwise the guider would be damaged.

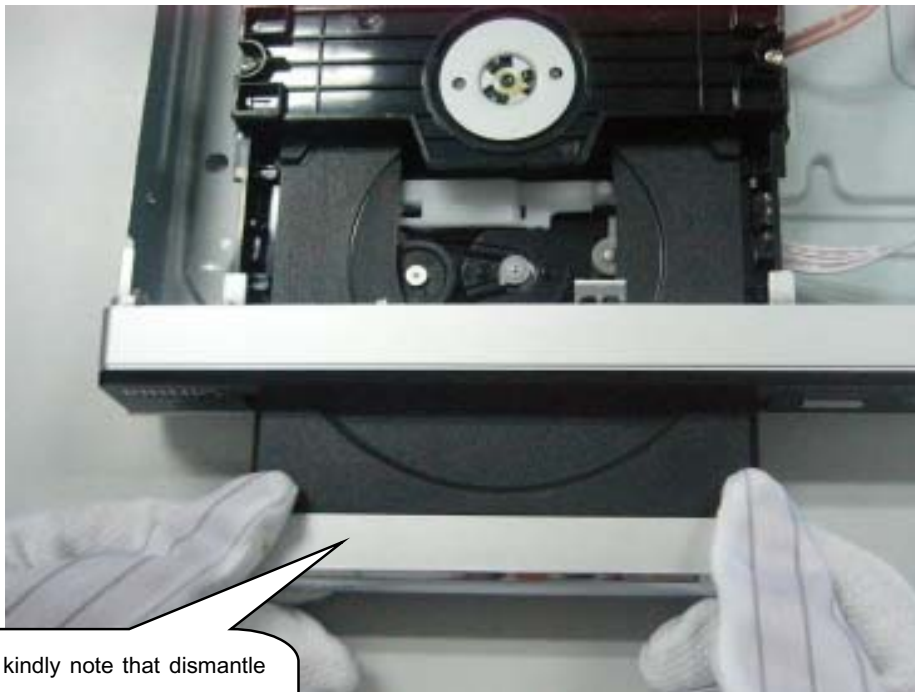


Figure 2

Please kindly note that dismantle the front door assembly carefully to avoid damage tray and the front door assembly.

## Mechanical and Dismantling Instructions

### Dismantling Instruction

---

**Step3:** If the tray can't open in normal way, you can make it through the instruction as below (Figure 3).

Note: Make sure to operate gently otherwise the guider would be damaged.



Figure 3

**Step4:** Dismantling Loader, disconnect the 3 connectors aiming in the below figure, and remove 1 screw around the Loader. (Figure 4)

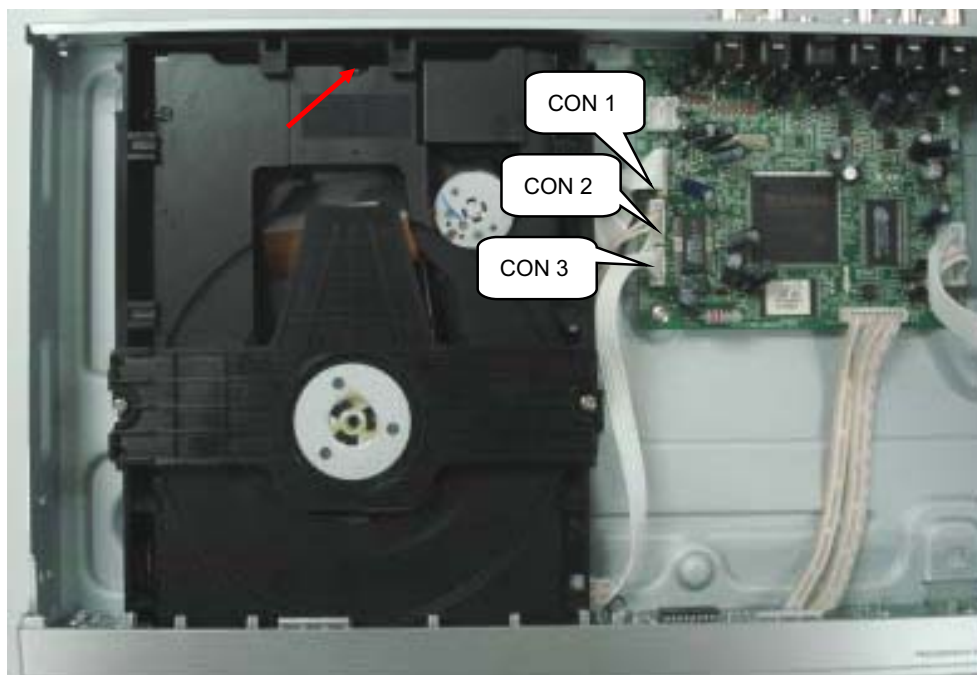


Figure 4

## Mechanical and Dismantling Instructions

### Dismantling Instruction

**Step5:** Dismantling Front Panel, disconnect the 1 connector, then release the snaps on the both sides of Front Panel and bottom cabinet , then gently pull the Panel out from the set. (Figure 5 & 6 & 7)

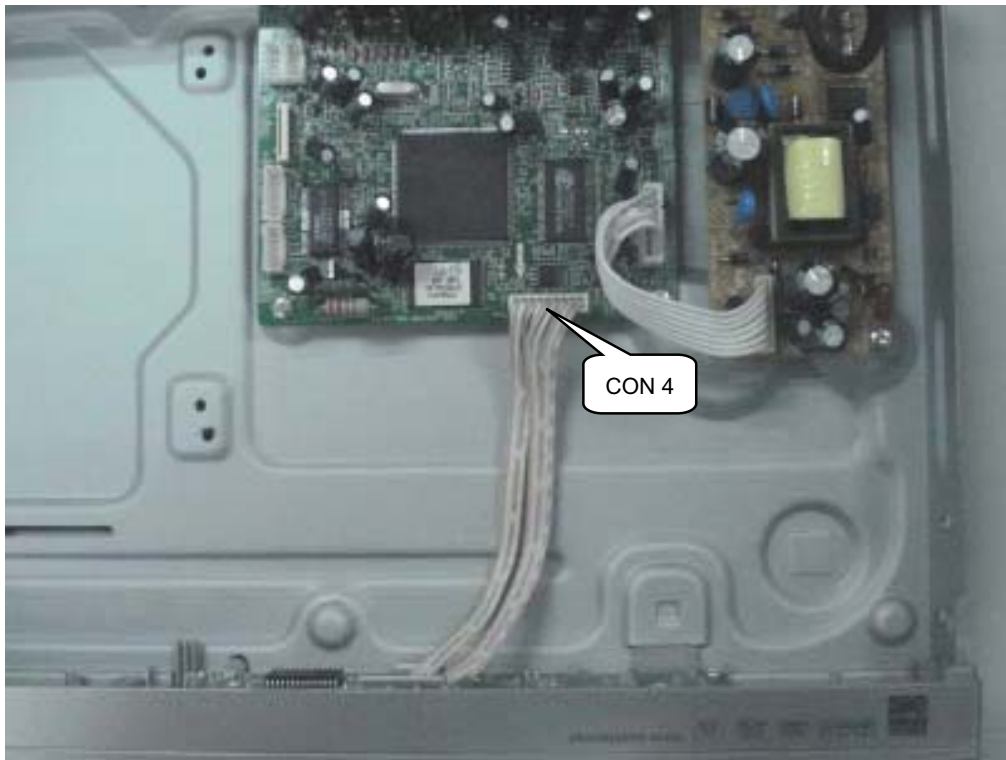


Figure 5

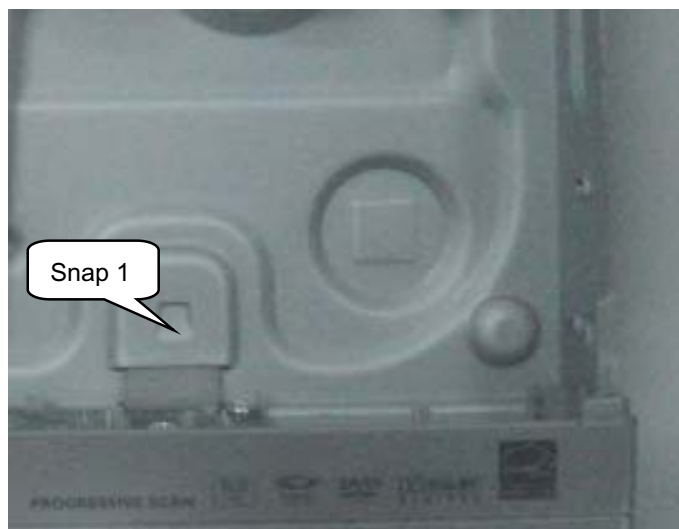


Figure 6

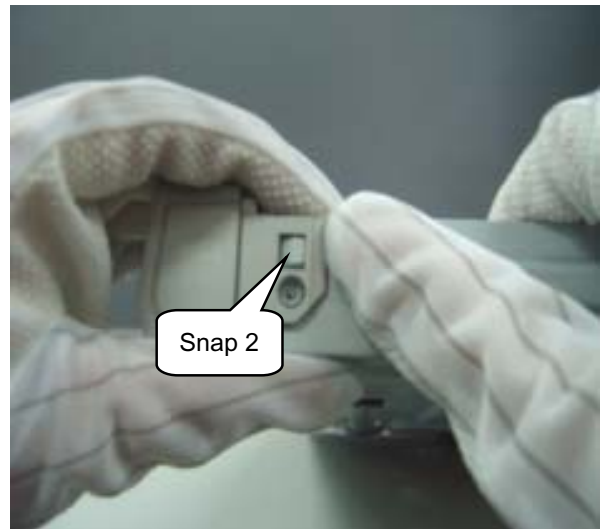


Figure 7



## Mechanical and Dismantling Instructions

### Dismantling Instruction

**Step6:** Dismantling Main Board, first disconnect the 1 connector, then remove 4 screws to remove the Main board. (Figure 8)

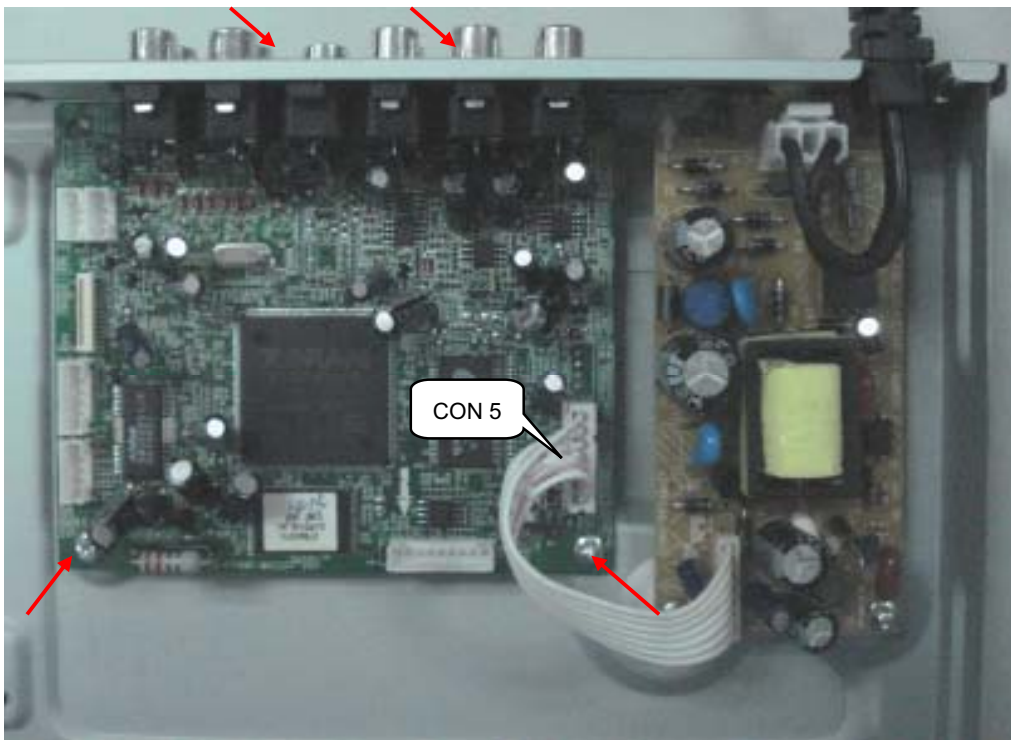


Figure 8

**Step7:** Remove the 2 screws on Power Board to dismantle the Power Board. (Figure 9)



Figure 9

## Software upgrade

### Preparation to upgrade software


- 1) Start the CD Burning software and create a new CD project (Data Disc) with the following setting:  
Label: DVP3XXX (No need the label name)

**Note: It is required capital letter for the File System name, and it no need have the File name during start the CD burning software for Zoran project.**


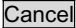
- 2) Burn the data onto a blank CDR


### A. Procedure for software upgrade:

- 1) Power on the set and insert the prepared Upgrade CDR.
- 2) The set will starts reading disc & response with the following display TV screen:  



Firmware Upgrade Erase and program.

Select  to start upgrade.
- 3) Press <OK> button to confirm, then screen will display :  
Firmware Upgrade Programming, Please Wait...  
Do not Switch the Player Off !
- 4) The upgraded disc will automatically out when files coping complete, then take out the disc.
- 5) About 1 minute later, the tray will automatically close when upgrading complete.

### B. Read out the software versions to confirm upgrading

- 1) Power on e set and Open the tray door.
- 2) Press <9><6><6>button to check the software information.

The software version and other information are display on the TV screen as follows:

BE Version: DVP3XXXXX\_XX.XX

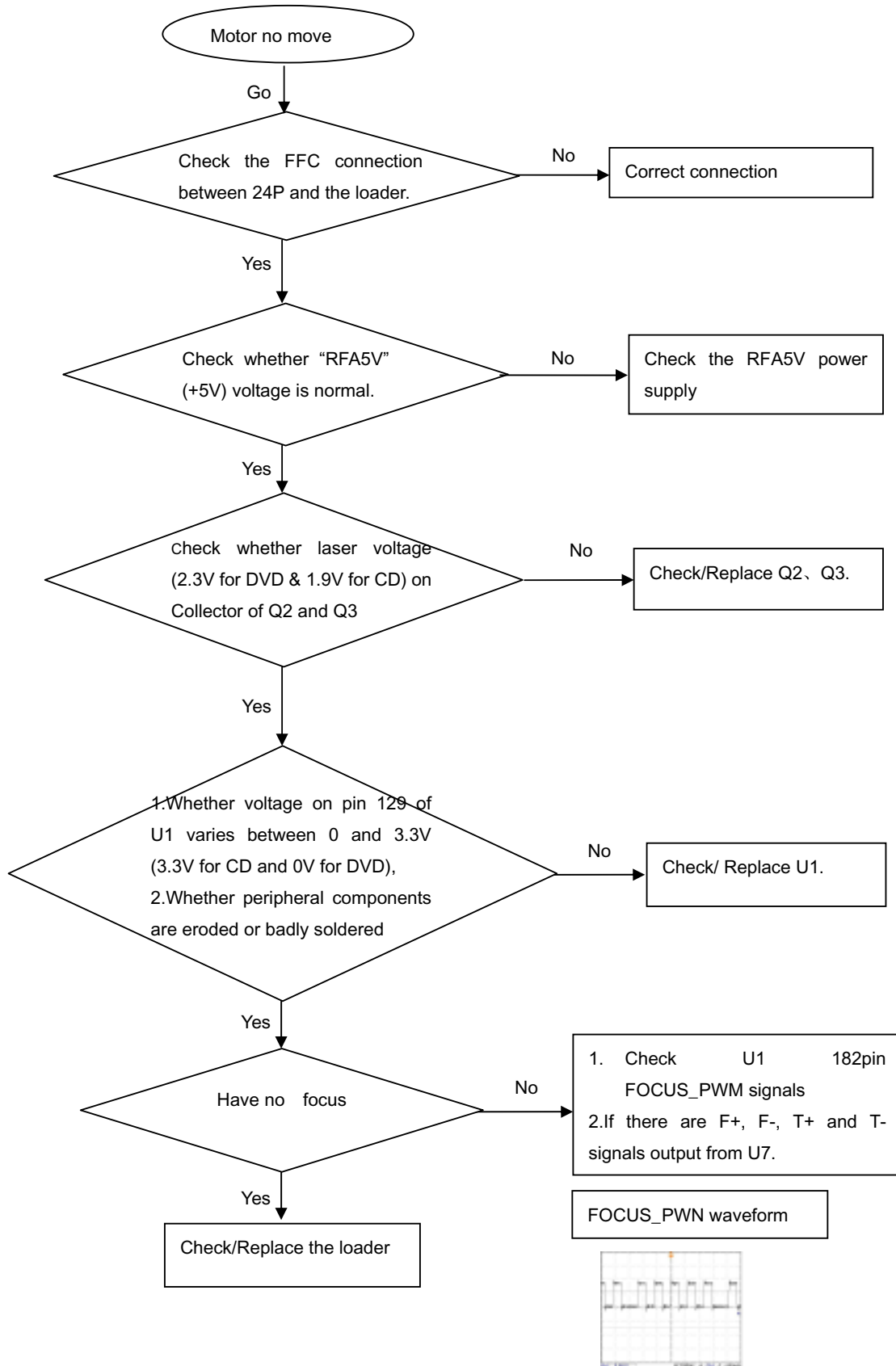
FE Version: DCX.XXXXXX.XX.XX

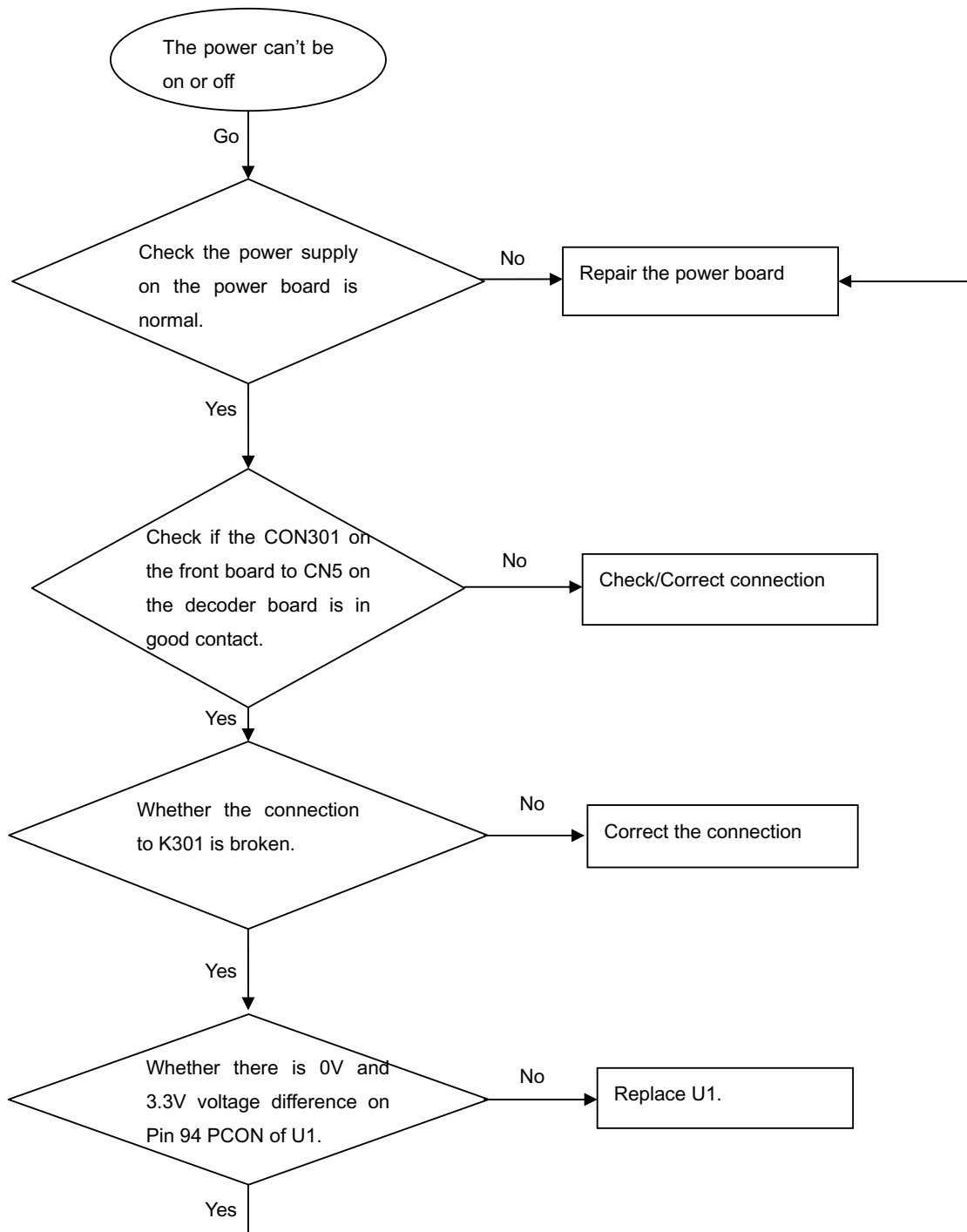
DSP Version: DSP.XX

Region Code: X

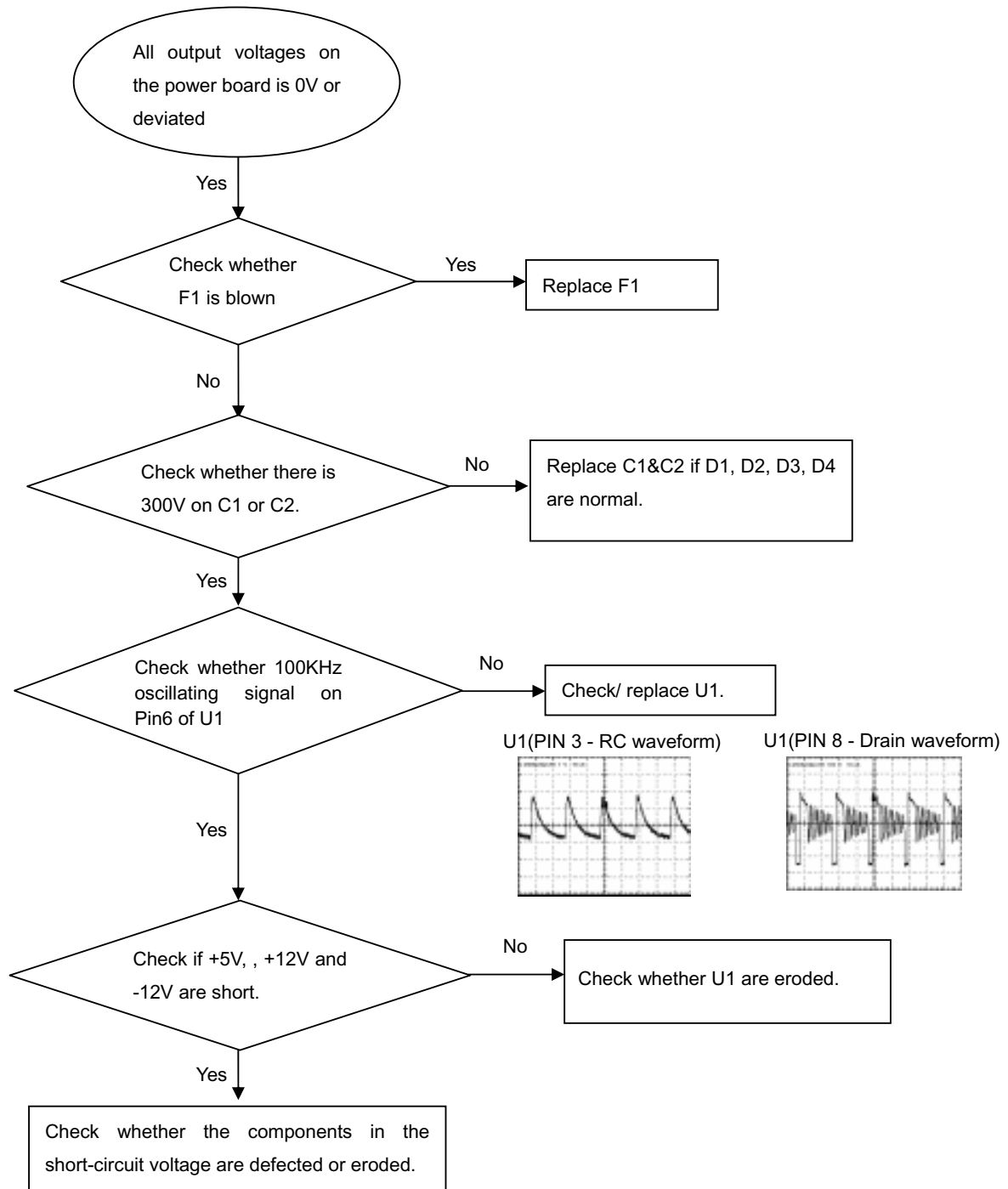
**Caution:** The set must not be power off during upgrading, Otherwise the Main board will be damaged entirely.

**Spindle motor does not move**

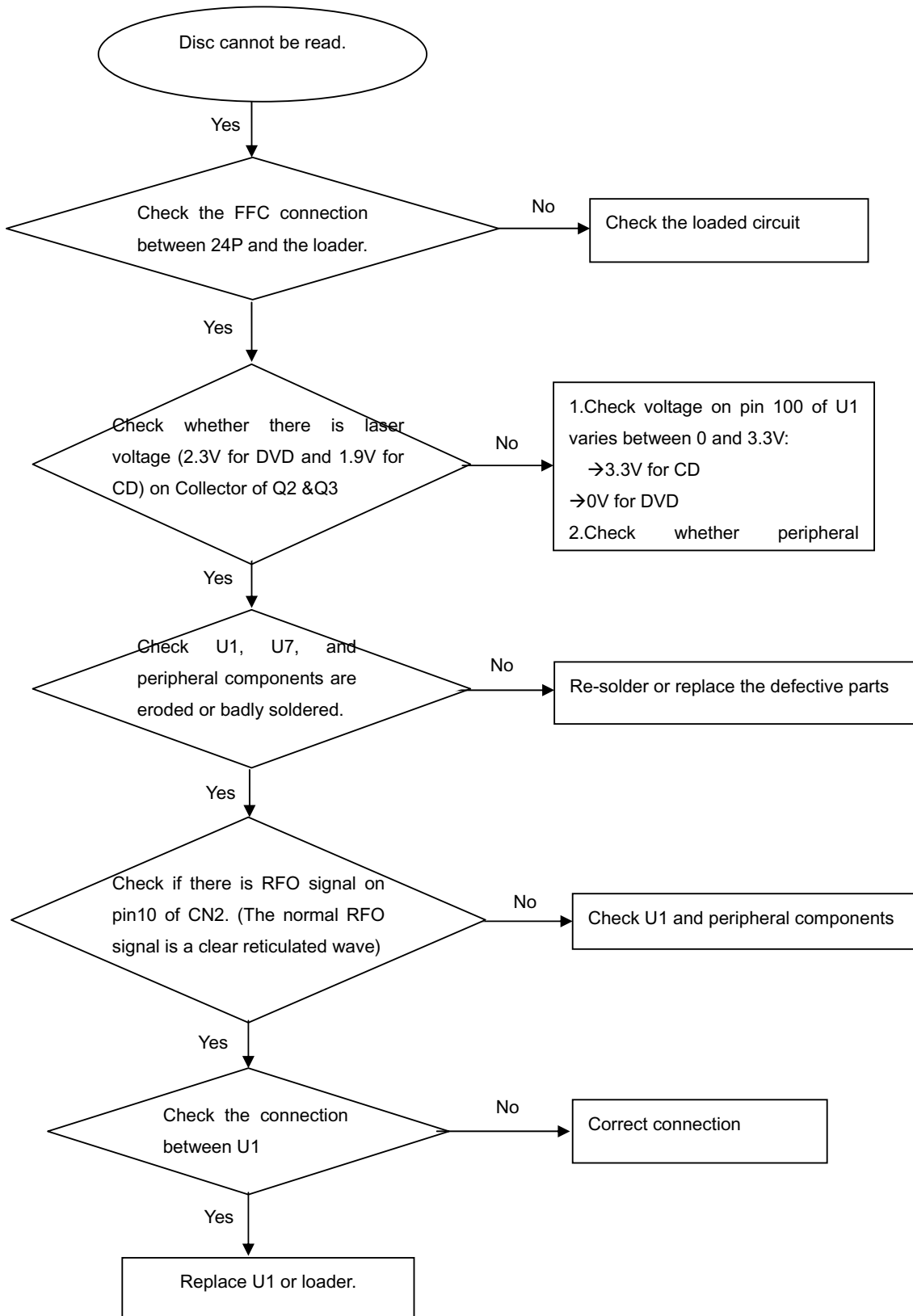


**The power can not be on or off**

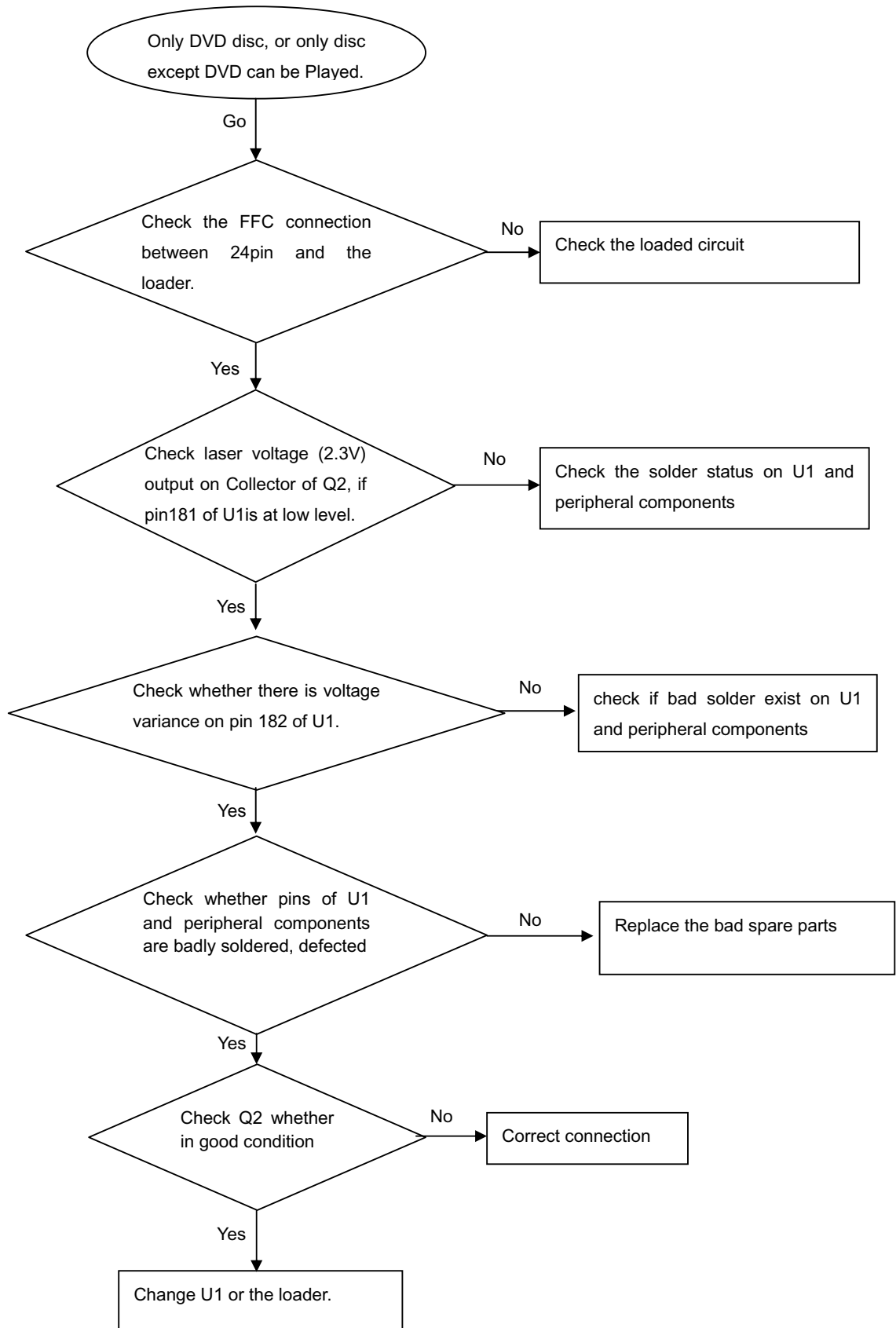
**All output voltages on the power board is 0V or deviated.**

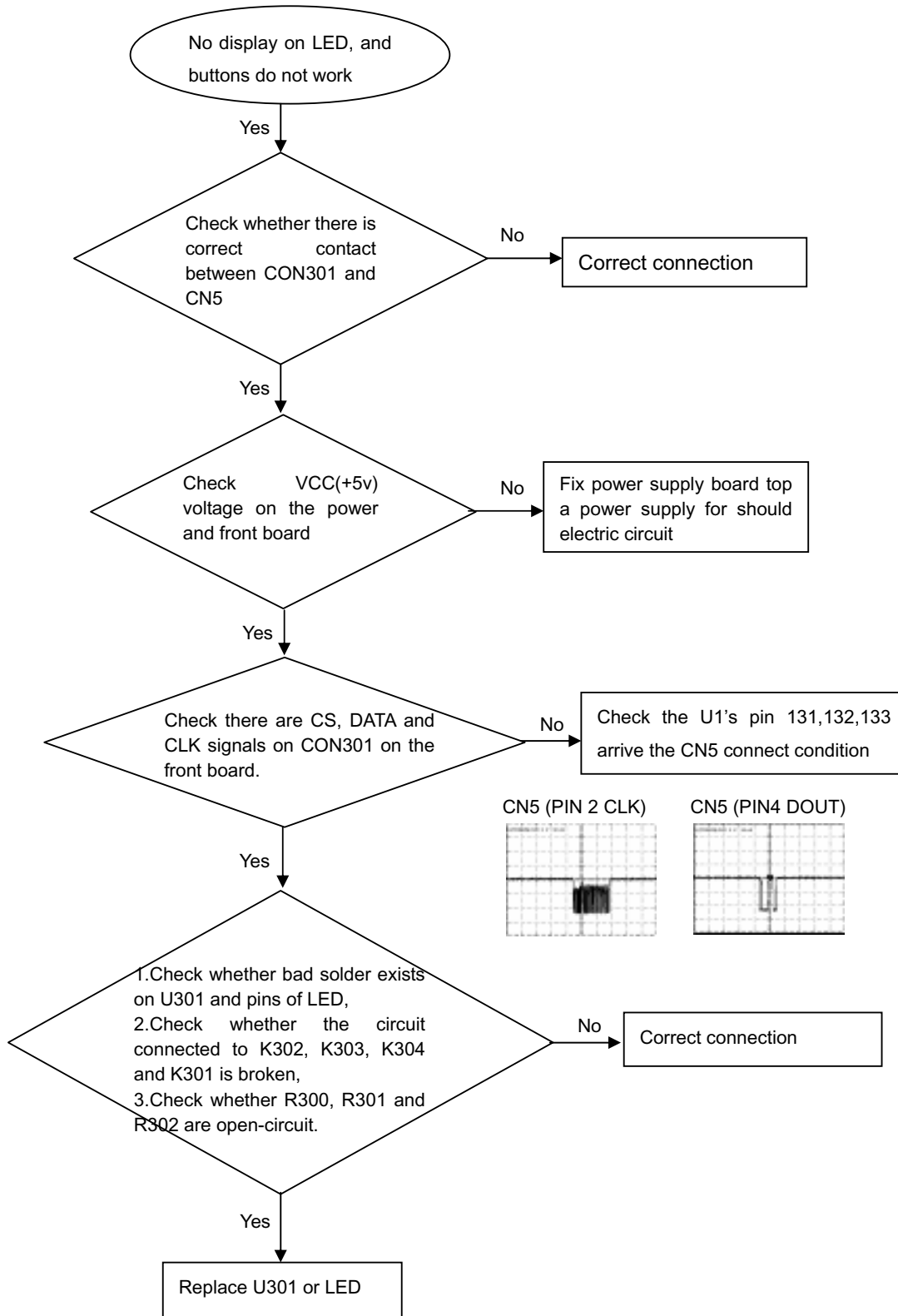


**Disc cannot be read.**

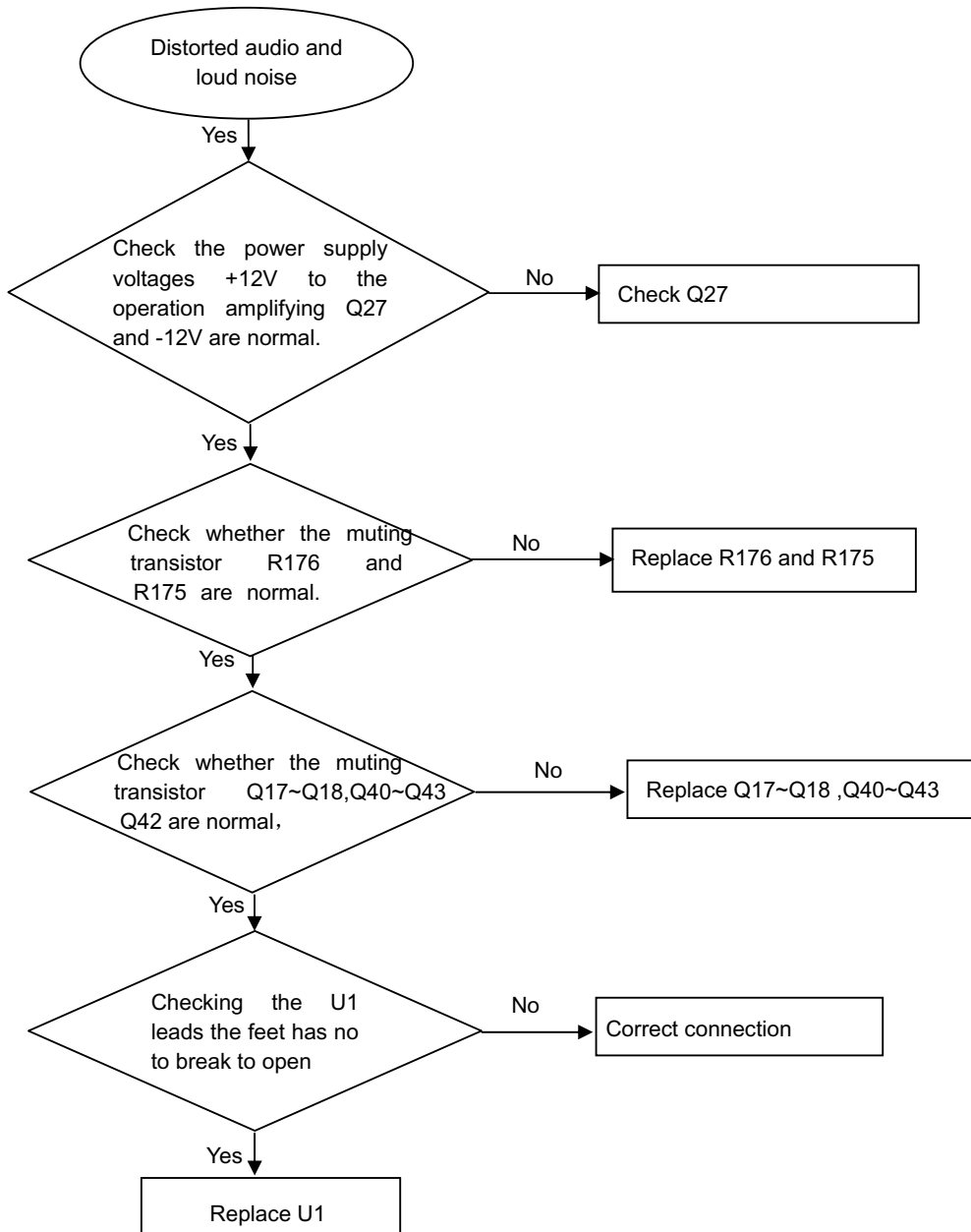


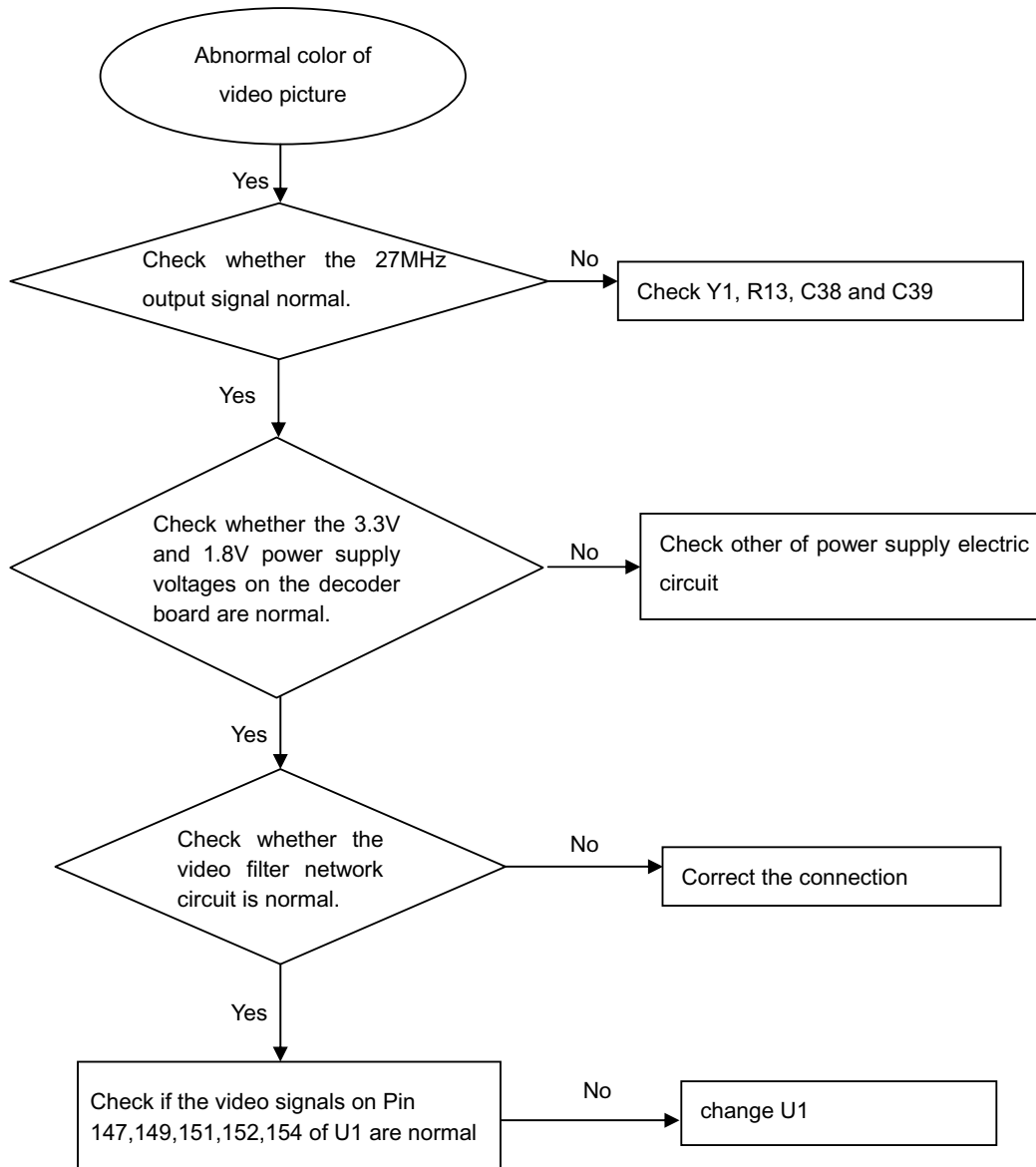
**Only DVD disc or only disc except DVD can be played**



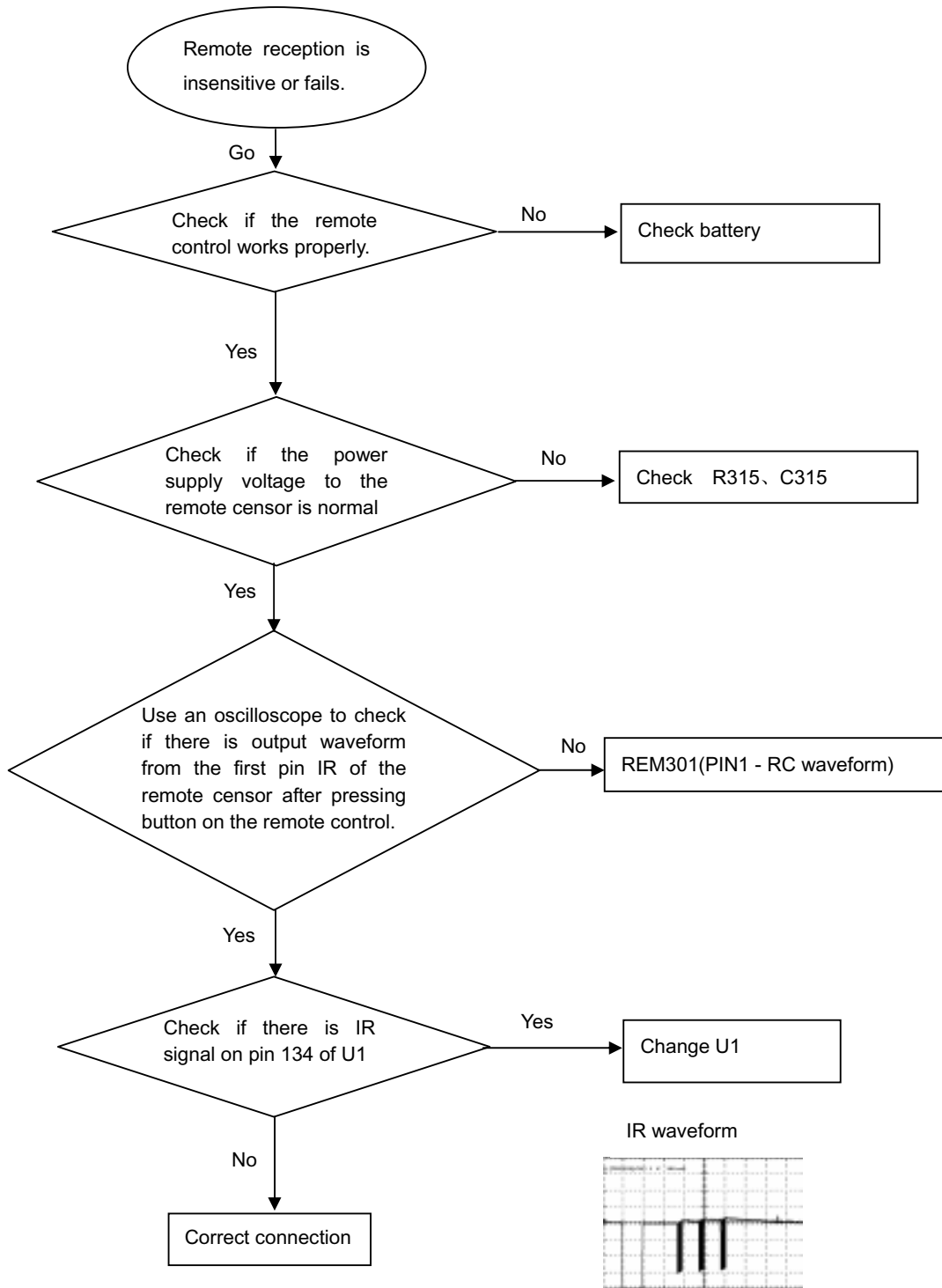
**No display on LED, and buttons do not work**



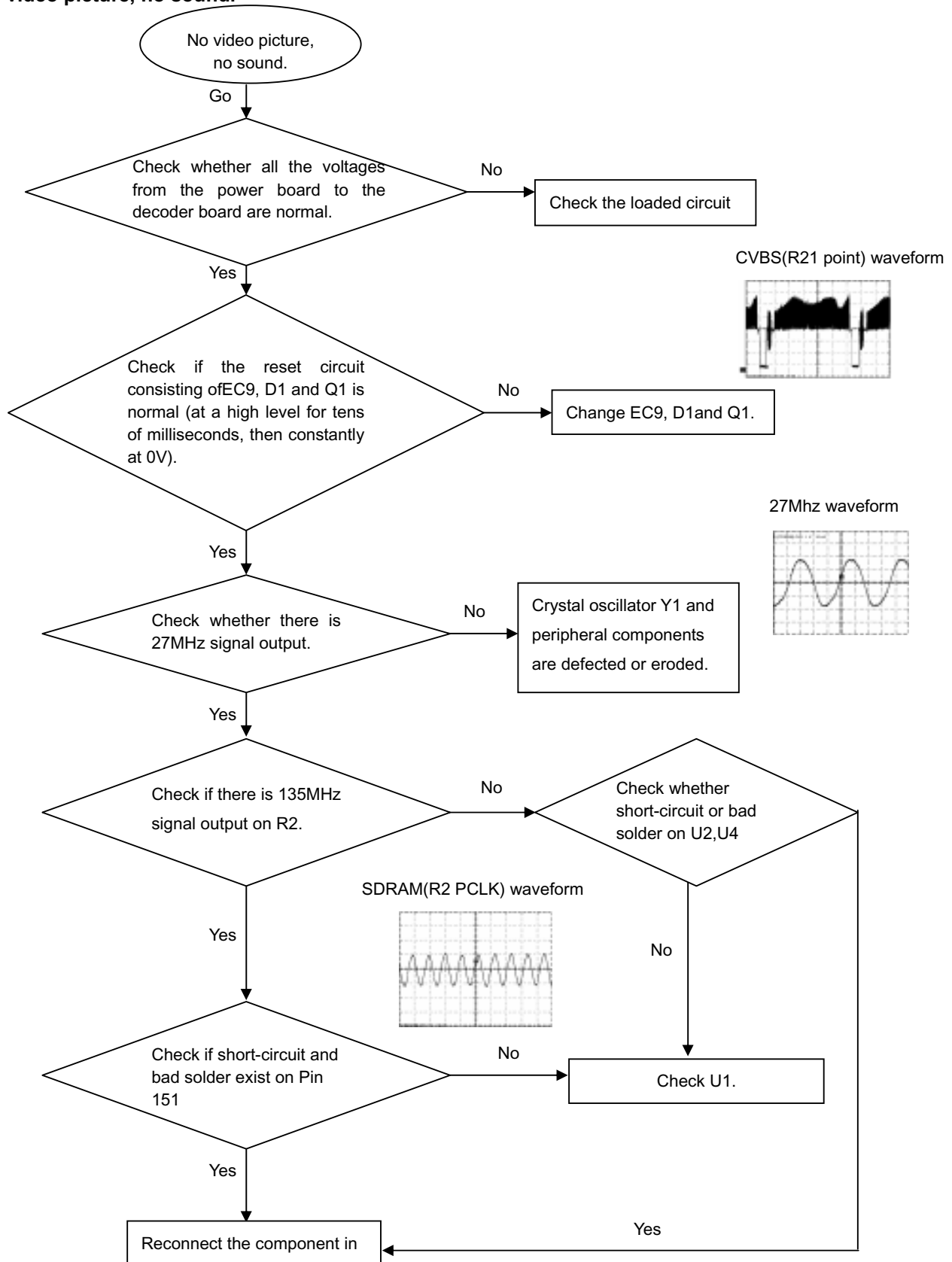
**Distorted audio and loud noise**

**Abnormal color of video picture**

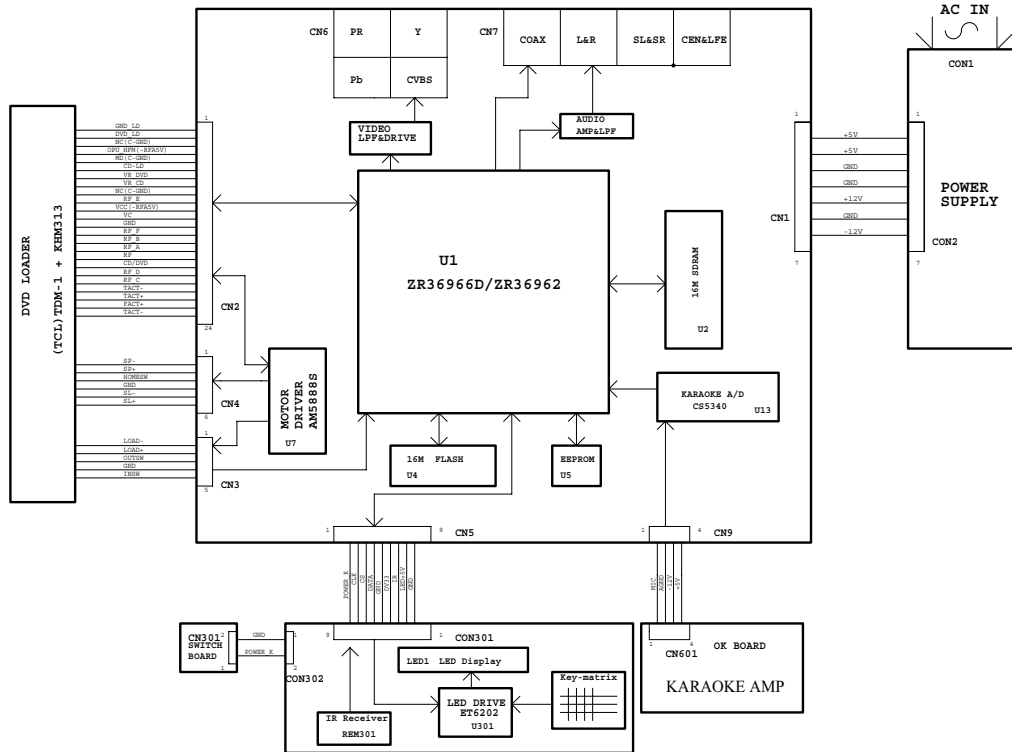
**Remote reception is insensitive or fails.**



**No video picture, no sound.**

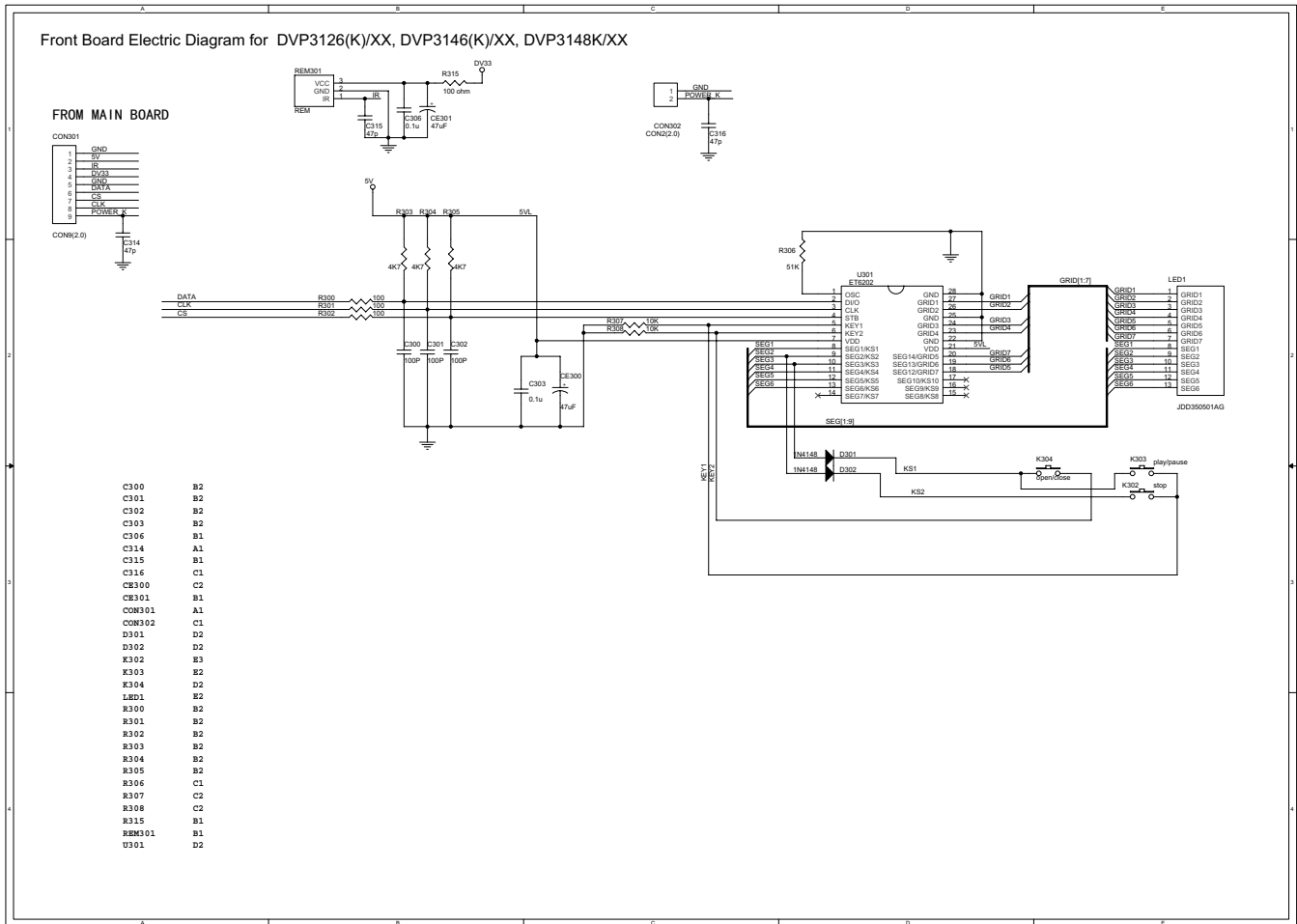


DVP3126 (K) /XX, DVP3146 (K) /XX, DVP3148K/XX WIRING DIAGRAM

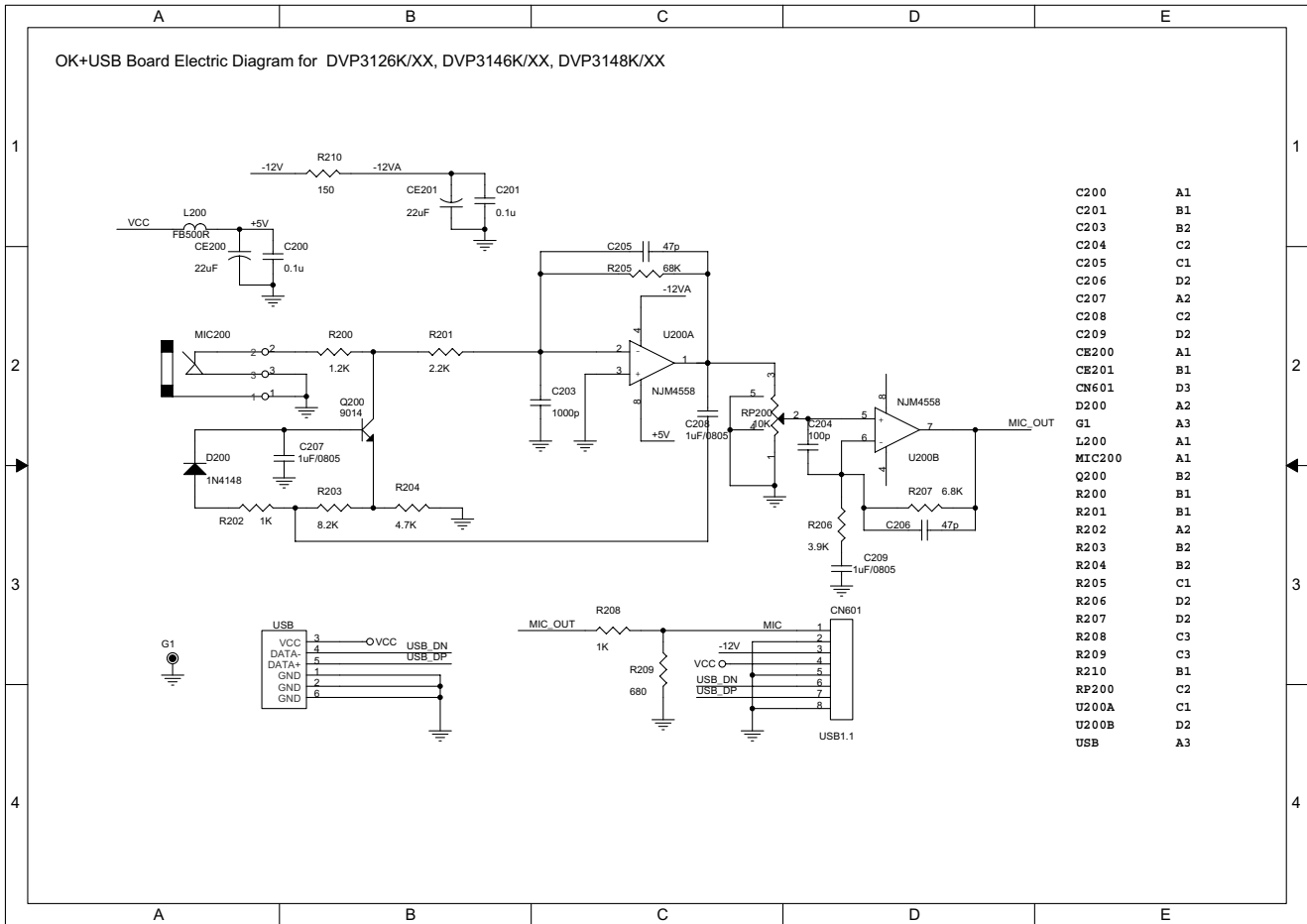


Remark:DVP3146 DVP3126 have no Karaoke.

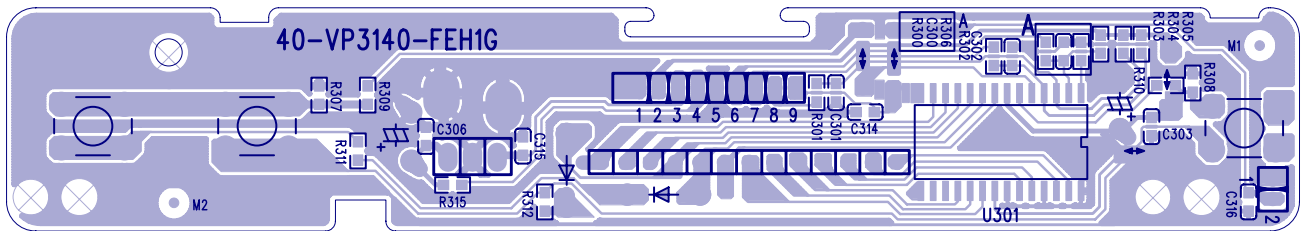
Remark:DVP3146 (K) USE ZORAN36966,DVP3126 (k) USE ZORAN36962.



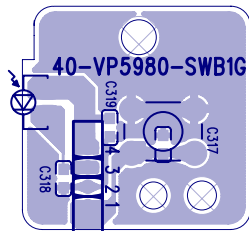
OK+USB Board Electric Diagram for DVP3126K/XX, DVP3146K/XX, DVP3148K/XX



Front Board Print-Layout (Bottom Side) for DVP3126(K)/XX, DVP3146(K)/XX, DVP3148K/XX

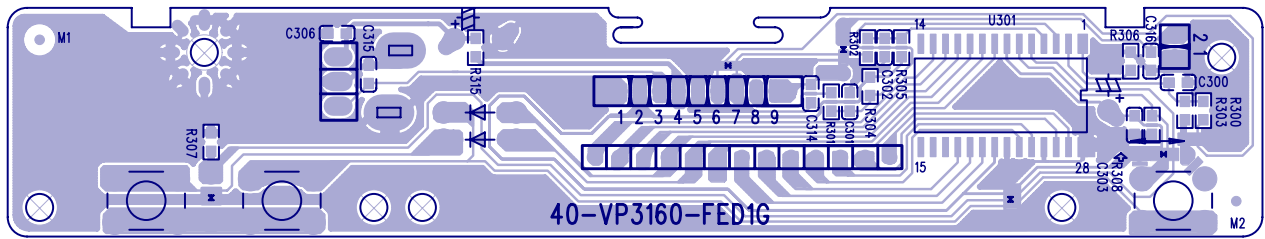


Switch Board Print-Layout (Bottom Side) for DVP3126(K)/XX, DVP3146(K)/XX, DVP3148K/XX

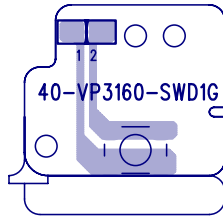




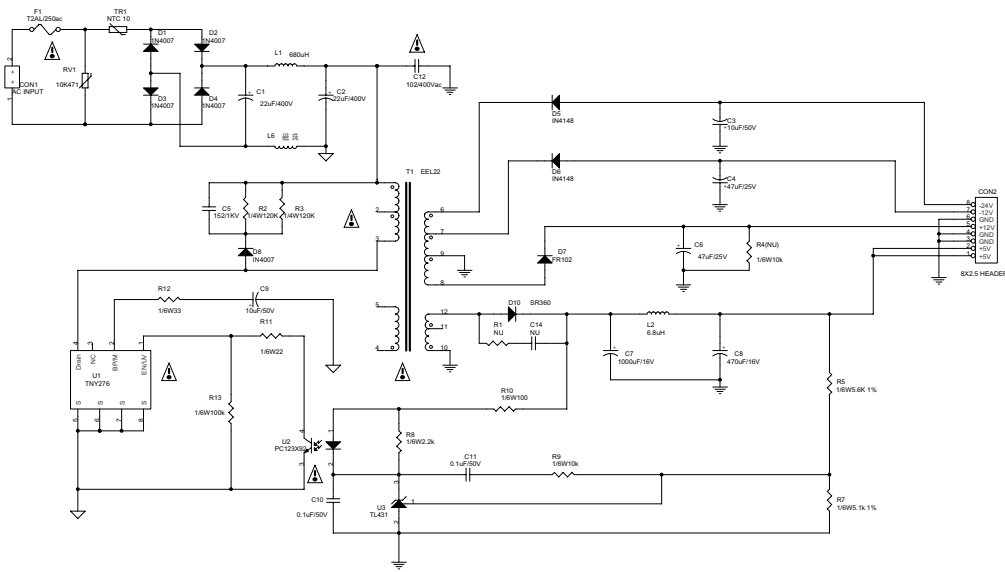
Front Board Print-Layout (Bottom Side) for DVP3146K/98, DVP3148K/51



Switch Board Print-Layout (Bottom Side) for DVP3146K/98, DVP3148K/51



Power Board Electric Diagram for DVP3126(K)/XX

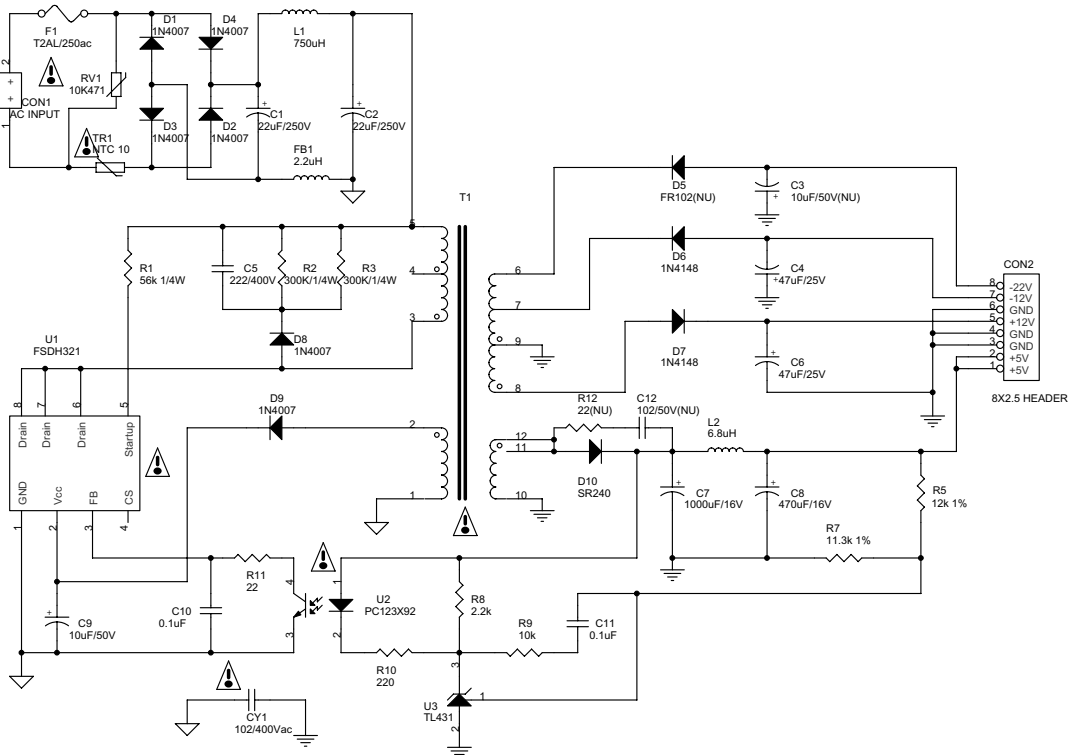


- C1 B1
- C10 B3
- C11 B3
- C12 B1
- C14 C2
- C2 B1
- C3 C1
- C4 C2
- C5 B2
- C6 C2
- C7 C2
- C8 B2
- C9 B2
- CON1 A1
- CON2 D2
- D1 A1
- D2 C2
- D3 B1
- D4 B1
- D5 C1
- D6 C1
- D7 C2
- D8 B2
- F1 A1
- L1 B1
- L2 C2
- L3 B1
- L4 B1
- L5 C3
- L6 B1
- L7 B1
- L8 C3
- L9 B1
- L10 C3
- L11 B2
- L12 A2
- L13 B3
- R1 B2
- R2 B2
- R3 B2
- R4 (ND) C2
- R5 D2
- R7 D3
- R8 B3
- R9 C3
- RV1 A1
- T1 B2
- TR1 A1
- U1 A2
- U2 B3
- U3 B3


**\* CAUTION :**  
 THE PARTS MARKED WITH ARE IMPORTANT PARTS ON THE SAFETY.  
 PLEASE USE THE PARTS HAVING THE DESIGNATED PARTS NUMBER WITHOUT FAIL.



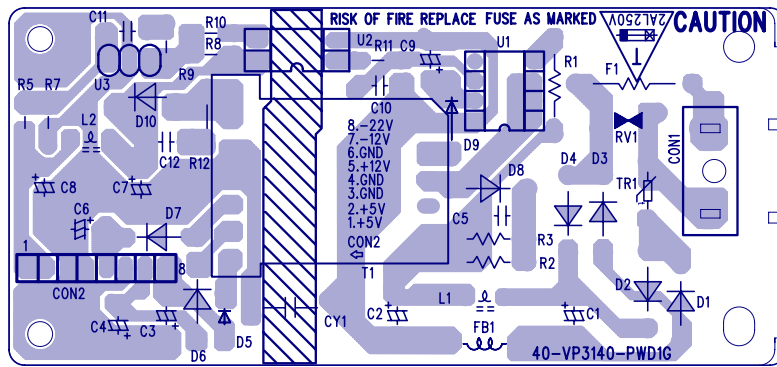
Power Board Electric Diagram for DVP3146(K)/XX, DVP3148K/XX



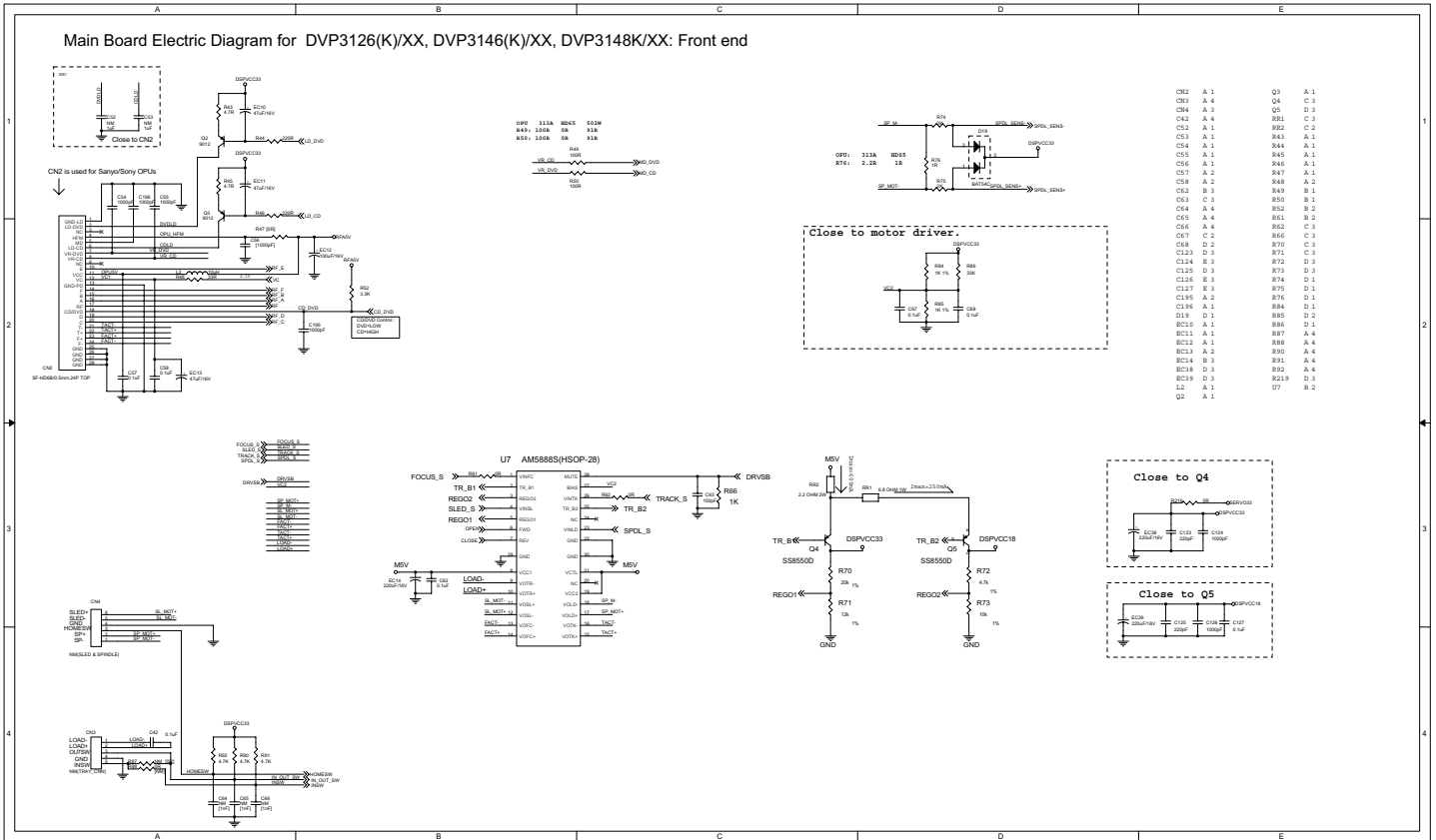
|      |    |
|------|----|
| C1   | B1 |
| C10  | A3 |
| C11  | C3 |
| C12  | C2 |
| C2   | B1 |
| C3   | C1 |
| C4   | C2 |
| C5   | A2 |
| C6   | C2 |
| C7   | C3 |
| C8   | A3 |
| C9   | A3 |
| CON1 | A1 |
| CON2 | D2 |
| C11  | B4 |
| D1   | A1 |
| D2   | A1 |
| D3   | A1 |
| D4   | A1 |
| D5   | C1 |
| D6   | C2 |
| D7   | B2 |
| D8   | B2 |
| D9   | B2 |
| F1   | A1 |
| FB1  | B1 |
| L1   | B1 |
| L2   | C3 |
| R1   | A2 |
| R10  | B3 |
| R11  | A3 |
| R12  | C2 |
| R2   | B2 |
| R3   | B2 |
| R5   | D3 |
| R7   | D3 |
| R8   | B3 |
| R9   | B3 |
| RV1  | A1 |
| T1   | B2 |
| TR1  | A1 |
| U1   | A2 |
| U2   | B3 |
| U3   | B3 |

**\* CAUTION :**  
 THE PARTS MARKED WITH  ARE IMPORTANT PARTS ON THE SAFETY.  
 PLEASE USE THE PARTS HAVING THE DESIGNATED PARTS NUMBER WITHOUT FAIL.

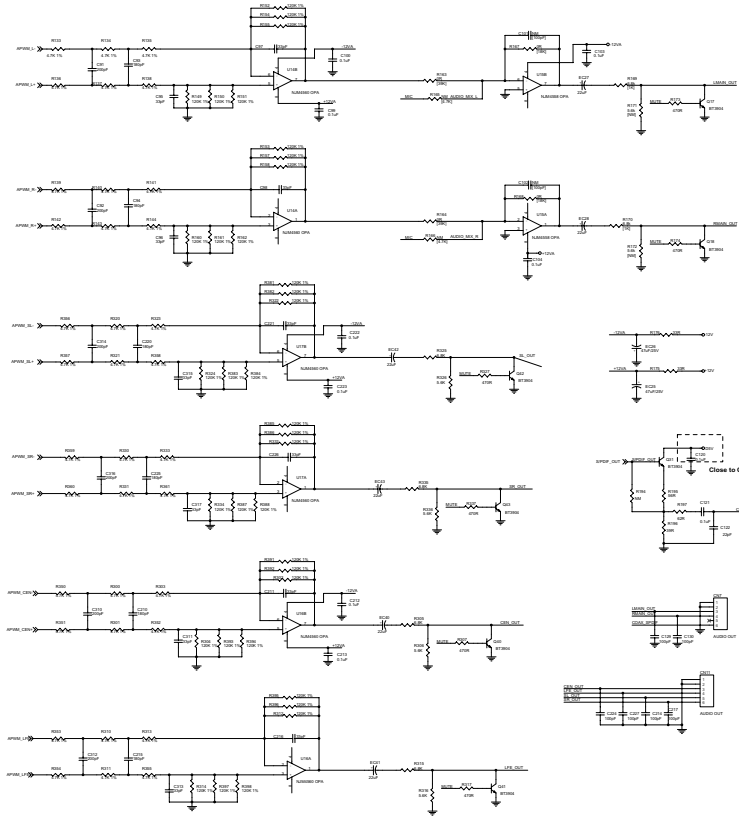
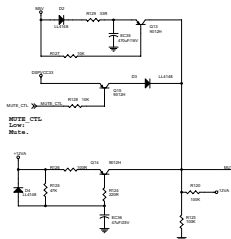
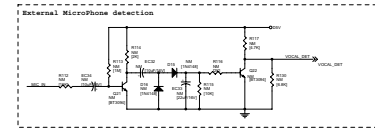
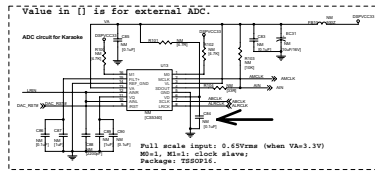
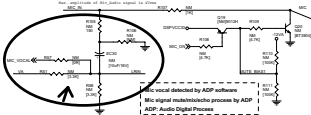
Power Board Print-Layout (Bottom Side) for DVP3146(K)/XX, DVP3148K/XX







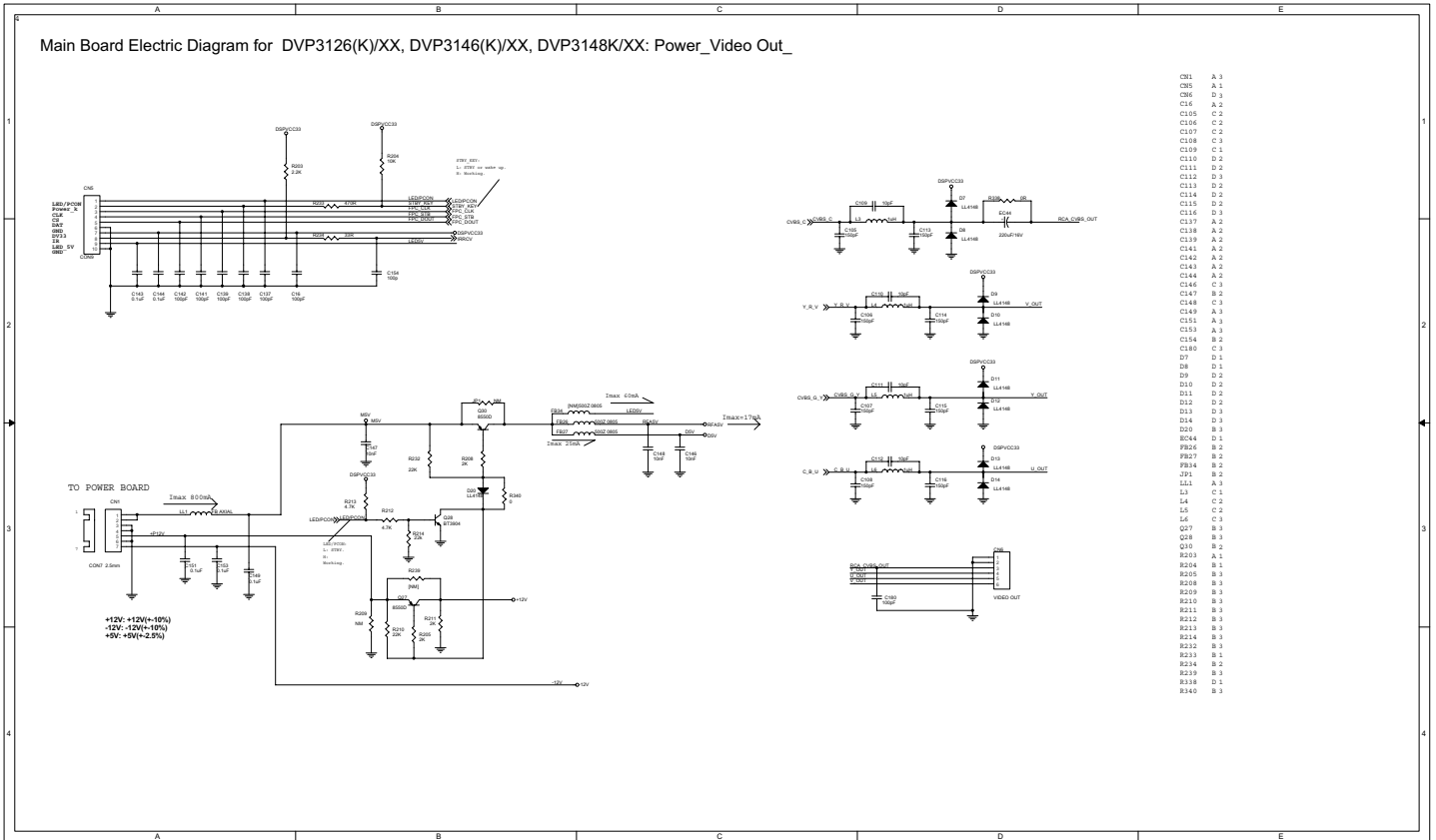
### Main Board Electric Diagram for DVP3126(K)/XX, DVP3146(K)/XX, DVP3148K/XX: Audio Input\_Out



|      |     |      |     |      |     |
|------|-----|------|-----|------|-----|
| C87  | A 3 | Q17  | D 1 | R195 | D 3 |
| C88  | A 1 | Q18  | D 2 | R196 | D 3 |
| C89  | D 4 | Q19  | A 1 | R197 | D 3 |
| C90  | A 2 | Q20  | A 2 | R198 | D 3 |
| C91  | A 1 | Q21  | A 2 | R199 | D 3 |
| C92  | A 2 | Q22  | D 3 | R200 | D 3 |
| C93  | A 2 | Q23  | D 3 | R201 | D 3 |
| C94  | A 2 | Q24  | D 3 | R202 | D 3 |
| C95  | A 2 | Q25  | D 3 | R203 | D 3 |
| C96  | A 2 | Q26  | D 3 | R204 | D 3 |
| C97  | A 2 | Q27  | D 3 | R205 | D 3 |
| C98  | A 2 | Q28  | D 3 | R206 | D 3 |
| C99  | A 2 | Q29  | D 3 | R207 | D 3 |
| C100 | A 1 | R208 | A 1 | R210 | C 4 |
| C101 | D 1 | R209 | A 1 | R211 | C 4 |
| C102 | D 1 | R210 | A 1 | R212 | C 4 |
| C103 | D 1 | R211 | A 1 | R213 | C 4 |
| C104 | D 1 | R212 | A 1 | R214 | C 4 |
| C105 | D 1 | R213 | A 1 | R215 | C 4 |
| C106 | D 1 | R214 | A 1 | R216 | C 4 |
| C107 | D 1 | R215 | A 1 | R217 | C 4 |
| C108 | D 1 | R216 | A 1 | R218 | C 4 |
| C109 | D 1 | R217 | A 1 | R219 | C 4 |
| C110 | D 1 | R218 | A 1 | R220 | C 4 |
| C111 | D 1 | R219 | A 1 | R221 | C 4 |
| C112 | D 1 | R220 | A 1 | R222 | C 4 |
| C113 | D 1 | R221 | A 1 | R223 | C 4 |
| C114 | D 1 | R222 | A 1 | R224 | C 4 |
| C115 | D 1 | R223 | A 1 | R225 | C 4 |
| C116 | D 1 | R224 | A 1 | R226 | C 4 |
| C117 | D 1 | R225 | A 1 | R227 | C 4 |
| C118 | D 1 | R226 | A 1 | R228 | C 4 |
| C119 | D 1 | R227 | A 1 | R229 | C 4 |
| C120 | D 1 | R228 | A 1 | R230 | C 4 |
| C121 | D 1 | R229 | A 1 | R231 | C 4 |
| C122 | D 1 | R230 | A 1 | R232 | C 4 |
| C123 | D 1 | R231 | A 1 | R233 | C 4 |
| C124 | D 1 | R232 | A 1 | R234 | C 4 |
| C125 | D 1 | R233 | A 1 | R235 | C 4 |
| C126 | D 1 | R234 | A 1 | R236 | C 4 |
| C127 | D 1 | R235 | A 1 | R237 | C 4 |
| C128 | D 1 | R236 | A 1 | R238 | C 4 |
| C129 | D 1 | R237 | A 1 | R239 | C 4 |
| C130 | D 1 | R238 | A 1 | R240 | C 4 |
| C131 | D 1 | R239 | A 1 | R241 | C 4 |
| C132 | D 1 | R240 | A 1 | R242 | C 4 |
| C133 | D 1 | R241 | A 1 | R243 | C 4 |
| C134 | D 1 | R242 | A 1 | R244 | C 4 |
| C135 | D 1 | R243 | A 1 | R245 | C 4 |
| C136 | D 1 | R244 | A 1 | R246 | C 4 |
| C137 | D 1 | R245 | A 1 | R247 | C 4 |
| C138 | D 1 | R246 | A 1 | R248 | C 4 |
| C139 | D 1 | R247 | A 1 | R249 | C 4 |
| C140 | D 1 | R248 | A 1 | R250 | C 4 |
| C141 | D 1 | R249 | A 1 | R251 | C 4 |
| C142 | D 1 | R250 | A 1 | R252 | C 4 |
| C143 | D 1 | R251 | A 1 | R253 | C 4 |
| C144 | D 1 | R252 | A 1 | R254 | C 4 |
| C145 | D 1 | R253 | A 1 | R255 | C 4 |
| C146 | D 1 | R254 | A 1 | R256 | C 4 |
| C147 | D 1 | R255 | A 1 | R257 | C 4 |
| C148 | D 1 | R256 | A 1 | R258 | C 4 |
| C149 | D 1 | R257 | A 1 | R259 | C 4 |
| C150 | D 1 | R258 | A 1 | R260 | C 4 |
| C151 | D 1 | R259 | A 1 | R261 | C 4 |
| C152 | D 1 | R260 | A 1 | R262 | C 4 |
| C153 | D 1 | R261 | A 1 | R263 | C 4 |
| C154 | D 1 | R262 | A 1 | R264 | C 4 |
| C155 | D 1 | R263 | A 1 | R265 | C 4 |
| C156 | D 1 | R264 | A 1 | R266 | C 4 |
| C157 | D 1 | R265 | A 1 | R267 | C 4 |
| C158 | D 1 | R266 | A 1 | R268 | C 4 |
| C159 | D 1 | R267 | A 1 | R269 | C 4 |
| C160 | D 1 | R268 | A 1 | R270 | C 4 |
| C161 | D 1 | R269 | A 1 | R271 | C 4 |
| C162 | D 1 | R270 | A 1 | R272 | C 4 |
| C163 | D 1 | R271 | A 1 | R273 | C 4 |
| C164 | D 1 | R272 | A 1 | R274 | C 4 |
| C165 | D 1 | R273 | A 1 | R275 | C 4 |
| C166 | D 1 | R274 | A 1 | R276 | C 4 |
| C167 | D 1 | R275 | A 1 | R277 | C 4 |
| C168 | D 1 | R276 | A 1 | R278 | C 4 |
| C169 | D 1 | R277 | A 1 | R279 | C 4 |
| C170 | D 1 | R278 | A 1 | R280 | C 4 |
| C171 | D 1 | R279 | A 1 | R281 | C 4 |
| C172 | D 1 | R280 | A 1 | R282 | C 4 |
| C173 | D 1 | R281 | A 1 | R283 | C 4 |
| C174 | D 1 | R282 | A 1 | R284 | C 4 |
| C175 | D 1 | R283 | A 1 | R285 | C 4 |
| C176 | D 1 | R284 | A 1 | R286 | C 4 |
| C177 | D 1 | R285 | A 1 | R287 | C 4 |
| C178 | D 1 | R286 | A 1 | R288 | C 4 |
| C179 | D 1 | R287 | A 1 | R289 | C 4 |
| C180 | D 1 | R288 | A 1 | R290 | C 4 |
| C181 | D 1 | R289 | A 1 | R291 | C 4 |
| C182 | D 1 | R290 | A 1 | R292 | C 4 |
| C183 | D 1 | R291 | A 1 | R293 | C 4 |
| C184 | D 1 | R292 | A 1 | R294 | C 4 |
| C185 | D 1 | R293 | A 1 | R295 | C 4 |
| C186 | D 1 | R294 | A 1 | R296 | C 4 |
| C187 | D 1 | R295 | A 1 | R297 | C 4 |
| C188 | D 1 | R296 | A 1 | R298 | C 4 |
| C189 | D 1 | R297 | A 1 | R299 | C 4 |
| C190 | D 1 | R298 | A 1 | R300 | C 4 |
| C191 | D 1 | R299 | A 1 | R301 | C 4 |
| C192 | D 1 | R300 | A 1 | R302 | C 4 |
| C193 | D 1 | R301 | A 1 | R303 | C 4 |
| C194 | D 1 | R302 | A 1 | R304 | C 4 |
| C195 | D 1 | R303 | A 1 | R305 | C 4 |
| C196 | D 1 | R304 | A 1 | R306 | C 4 |
| C197 | D 1 | R305 | A 1 | R307 | C 4 |
| C198 | D 1 | R306 | A 1 | R308 | C 4 |
| C199 | D 1 | R307 | A 1 | R309 | C 4 |
| C200 | D 1 | R308 | A 1 | R310 | C 4 |
| C201 | D 1 | R309 | A 1 | R311 | C 4 |
| C202 | D 1 | R310 | A 1 | R312 | C 4 |
| C203 | D 1 | R311 | A 1 | R313 | C 4 |
| C204 | D 1 | R312 | A 1 | R314 | C 4 |
| C205 | D 1 | R313 | A 1 | R315 | C 4 |
| C206 | D 1 | R314 | A 1 | R316 | C 4 |
| C207 | D 1 | R315 | A 1 | R317 | C 4 |
| C208 | D 1 | R316 | A 1 | R318 | C 4 |
| C209 | D 1 | R317 | A 1 | R319 | C 4 |
| C210 | D 1 | R318 | A 1 | R320 | C 4 |
| C211 | D 1 | R319 | A 1 | R321 | C 4 |
| C212 | D 1 | R320 | A 1 | R322 | C 4 |
| C213 | D 1 | R321 | A 1 | R323 | C 4 |
| C214 | D 1 | R322 | A 1 | R324 | C 4 |
| C215 | D 1 | R323 | A 1 | R325 | C 4 |
| C216 | D 1 | R324 | A 1 | R326 | C 4 |
| C217 | D 1 | R325 | A 1 | R327 | C 4 |
| C218 | D 1 | R326 | A 1 | R328 | C 4 |
| C219 | D 1 | R327 | A 1 | R329 | C 4 |
| C220 | D 1 | R328 | A 1 | R330 | C 4 |
| C221 | D 1 | R329 | A 1 | R331 | C 4 |
| C222 | D 1 | R330 | A 1 | R332 | C 4 |
| C223 | D 1 | R331 | A 1 | R333 | C 4 |
| C224 | D 1 | R332 | A 1 | R334 | C 4 |
| C225 | D 1 | R333 | A 1 | R335 | C 4 |
| C226 | D 1 | R334 | A 1 | R336 | C 4 |
| C227 | D 1 | R335 | A 1 | R337 | C 4 |
| C228 | D 1 | R336 | A 1 | R338 | C 4 |
| C229 | D 1 | R337 | A 1 | R339 | C 4 |
| C230 | D 1 | R338 | A 1 | R340 | C 4 |
| C231 | D 1 | R339 | A 1 | R341 | C 4 |
| C232 | D 1 | R340 | A 1 | R342 | C 4 |
| C233 | D 1 | R341 | A 1 | R343 | C 4 |
| C234 | D 1 | R342 | A 1 | R344 | C 4 |
| C235 | D 1 | R343 | A 1 | R345 | C 4 |
| C236 | D 1 | R344 | A 1 | R346 | C 4 |
| C237 | D 1 | R345 | A 1 | R347 | C 4 |
| C238 | D 1 | R346 | A 1 | R348 | C 4 |
| C239 | D 1 | R347 | A 1 | R349 | C 4 |
| C240 | D 1 | R348 | A 1 | R350 | C 4 |
| C241 | D 1 | R349 | A 1 | R351 | C 4 |
| C242 | D 1 | R350 | A 1 | R352 | C 4 |
| C243 | D 1 | R351 | A 1 | R353 | C 4 |
| C244 | D 1 | R352 | A 1 | R354 | C 4 |
| C245 | D 1 | R353 | A 1 | R355 | C 4 |
| C246 | D 1 | R354 | A 1 | R356 | C 4 |
| C247 | D 1 | R355 | A 1 | R357 | C 4 |
| C248 | D 1 | R356 | A 1 | R358 | C 4 |
| C249 | D 1 | R357 | A 1 | R359 | C 4 |
| C250 | D 1 | R358 | A 1 | R360 | C 4 |
| C251 | D 1 | R359 | A 1 | R361 | C 4 |
| C252 | D 1 | R360 | A 1 | R362 | C 4 |
| C253 | D 1 | R361 | A 1 | R363 | C 4 |
| C254 | D 1 | R362 | A 1 | R364 | C 4 |
| C255 | D 1 | R363 | A 1 | R365 | C 4 |
| C256 | D 1 | R364 | A 1 | R366 | C 4 |
| C257 | D 1 | R365 | A 1 | R367 | C 4 |
| C258 | D 1 | R366 | A 1 | R368 | C 4 |
| C259 | D 1 | R367 | A 1 | R369 | C 4 |
| C260 | D 1 | R368 | A 1 | R370 | C 4 |
| C261 | D 1 | R369 | A 1 | R371 | C 4 |
| C262 | D 1 | R370 | A 1 | R372 | C 4 |
| C263 | D 1 | R371 | A 1 | R373 | C 4 |
| C264 | D 1 | R372 | A 1 | R374 | C 4 |
| C265 | D 1 | R373 | A 1 | R375 | C 4 |
| C266 | D 1 | R374 | A 1 | R376 | C 4 |
| C267 | D 1 | R375 | A 1 | R377 | C 4 |
| C268 | D 1 | R376 | A 1 | R378 | C 4 |
| C269 | D 1 | R377 | A 1 | R379 | C 4 |
| C270 | D 1 | R378 | A 1 | R380 | C 4 |
| C271 | D 1 | R379 | A 1 | R381 | C 4 |
| C272 | D 1 | R380 | A 1 | R382 | C 4 |
| C273 | D 1 | R381 | A 1 | R383 | C 4 |
| C274 | D 1 | R382 | A 1 | R384 | C 4 |
| C275 | D 1 | R383 | A 1 | R385 | C 4 |
| C276 | D 1 | R384 | A 1 | R386 | C 4 |
| C277 | D 1 | R385 | A 1 | R387 | C 4 |
| C278 | D 1 | R386 | A 1 | R388 | C 4 |
| C279 | D 1 | R387 | A 1 | R389 | C 4 |
| C280 | D 1 | R388 | A 1 | R390 | C 4 |
| C281 | D 1 | R389 | A 1 | R391 | C 4 |
| C282 | D 1 | R390 | A 1 | R392 | C 4 |
| C283 | D 1 | R391 | A 1 | R393 | C 4 |
| C284 | D 1 | R392 | A 1 | R394 | C 4 |
| C285 | D 1 | R393 | A 1 | R395 | C 4 |
| C286 | D 1 | R394 | A 1 | R396 | C 4 |
| C287 | D 1 | R395 | A 1 | R397 | C 4 |
| C288 | D 1 | R396 | A 1 | R398 | C 4 |
| C289 | D 1 | R397 | A 1 | R399 | C 4 |
| C290 | D 1 | R398 | A 1 | R400 | C 4 |
| C291 | D 1 | R399 | A 1 | R401 | C 4 |
| C292 | D 1 | R400 | A 1 | R402 | C 4 |
| C293 | D 1 | R401 | A 1 | R403 | C 4 |
| C294 | D 1 | R402 | A 1 | R404 | C 4 |
| C295 | D 1 | R403 | A 1 | R405 | C 4 |
| C296 | D 1 | R404 | A 1 | R406 | C 4 |
| C297 | D 1 | R405 | A 1 | R407 | C 4 |
| C298 | D 1 | R406 | A 1 | R408 | C 4 |
| C299 | D 1 | R407 | A 1 | R409 | C 4 |
| C300 | D 1 | R408 | A 1 | R410 | C 4 |
| C301 | D 1 | R409 | A 1 | R411 | C 4 |
| C302 | D 1 | R410 | A 1 | R412 | C 4 |
| C303 | D 1 | R411 | A 1 | R413 | C 4 |
| C304 | D 1 | R412 | A 1 | R414 | C 4 |
| C305 | D 1 | R413 | A 1 | R415 | C 4 |
| C306 | D 1 | R414 | A 1 | R416 | C 4 |
| C307 | D 1 | R415 | A 1 | R417 | C 4 |
| C308 | D 1 | R416 | A 1 | R418 | C 4 |
| C309 | D 1 | R417 | A 1 | R419 | C 4 |
| C310 | D 1 | R418 | A 1 | R420 | C 4 |
| C311 | D 1 | R419 | A 1 | R421 | C 4 |
| C312 | D 1 | R420 | A 1 | R422 | C 4 |
| C313 | D 1 | R421 | A 1 | R423 | C 4 |
| C314 | D 1 | R422 | A 1 | R424 | C 4 |
| C315 | D 1 | R423 | A 1 | R425 | C 4 |
| C316 | D 1 | R424 | A 1 | R426 | C 4 |
| C317 | D 1 | R425 | A 1 | R427 | C 4 |
| C318 | D 1 | R426 | A 1 | R428 | C 4 |
| C319 | D 1 | R427 | A 1 | R429 | C 4 |
| C320 | D 1 | R428 | A 1 | R430 | C 4 |
| C    |     |      |     |      |     |

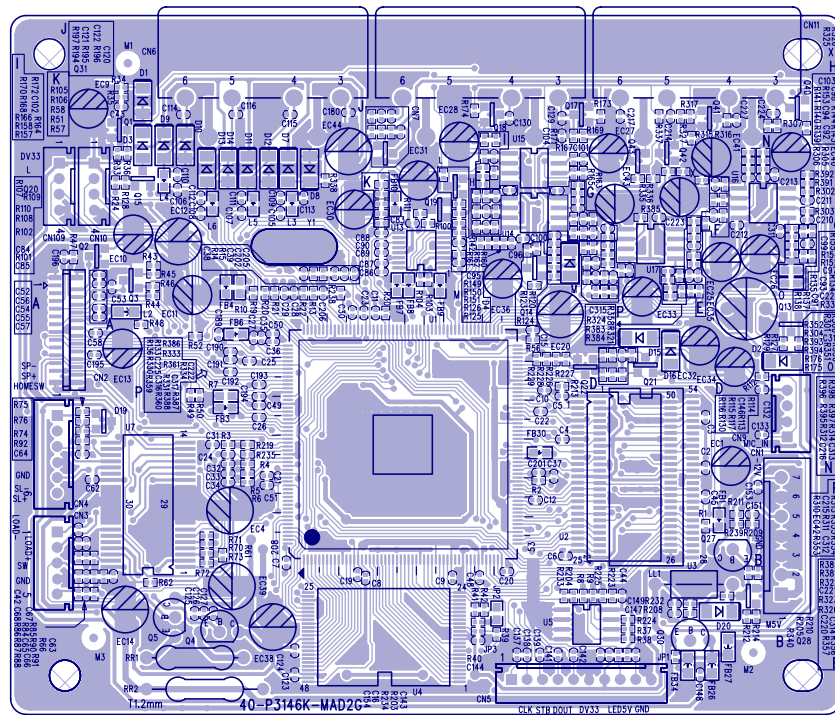


Main Board Electric Diagram for DVP3126(K)/XX, DVP3146(K)/XX, DVP3148K/XX: Power\_Video Out\_

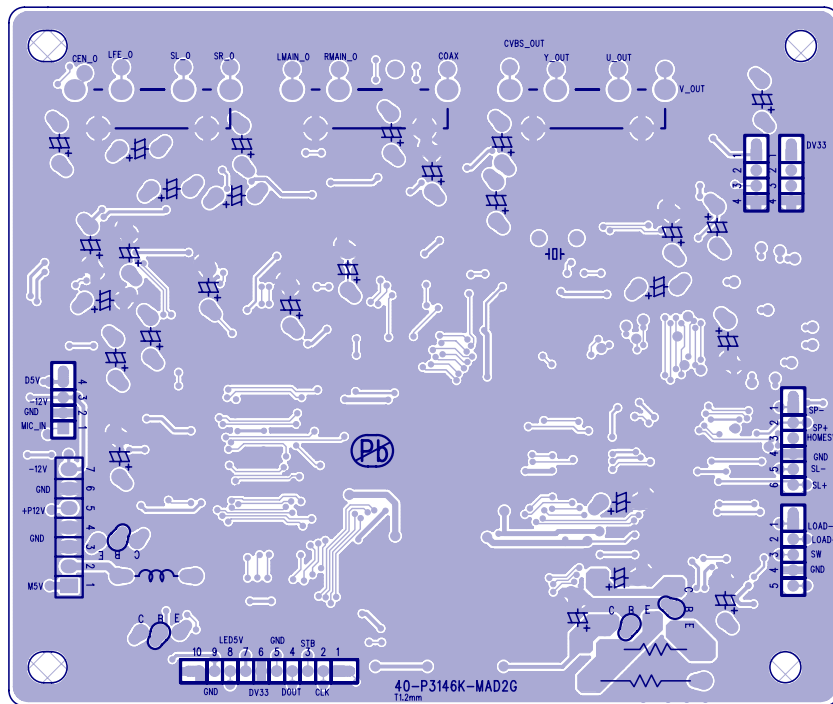


- C81 A 3
- C85 A 1
- C86 D 3
- C16 A 2
- C105 C 2
- C106 C 2
- C107 C 2
- C108 C 3
- C109 C 1
- C110 D 2
- C111 D 2
- C112 D 3
- C113 D 2
- C114 D 2
- C115 D 2
- C116 D 3
- C117 A 2
- C118 A 2
- C119 A 2
- C141 A 2
- C142 A 2
- C143 A 2
- C144 A 2
- C145 C 3
- C147 B 2
- C148 C 3
- C149 A 3
- C151 A 3
- C153 A 3
- C154 B 2
- C180 C 3
- D7 D 1
- D8 D 1
- D9 D 2
- D10 D 2
- D11 D 2
- D12 D 2
- D13 D 3
- D14 D 3
- D15 B 3
- D16 D 1
- FB26 B 2
- FB27 B 2
- FB34 B 2
- J51 B 2
- L11 A 3
- L1 C 1
- L4 C 2
- L5 C 2
- L6 C 1
- Q27 B 3
- Q28 B 3
- Q10 B 2
- R203 A 1
- R204 B 1
- R205 B 3
- R206 B 1
- R209 B 3
- R210 B 3
- R211 B 3
- R212 B 3
- R213 B 3
- R214 B 3
- R215 B 1
- R216 B 2
- R219 B 3
- R218 D 1
- R240 B 3

Main Board Print-Layout (Top Side) for DVP3126(K)/XX, DVP3146(K)/XX, DVP3148K/XX

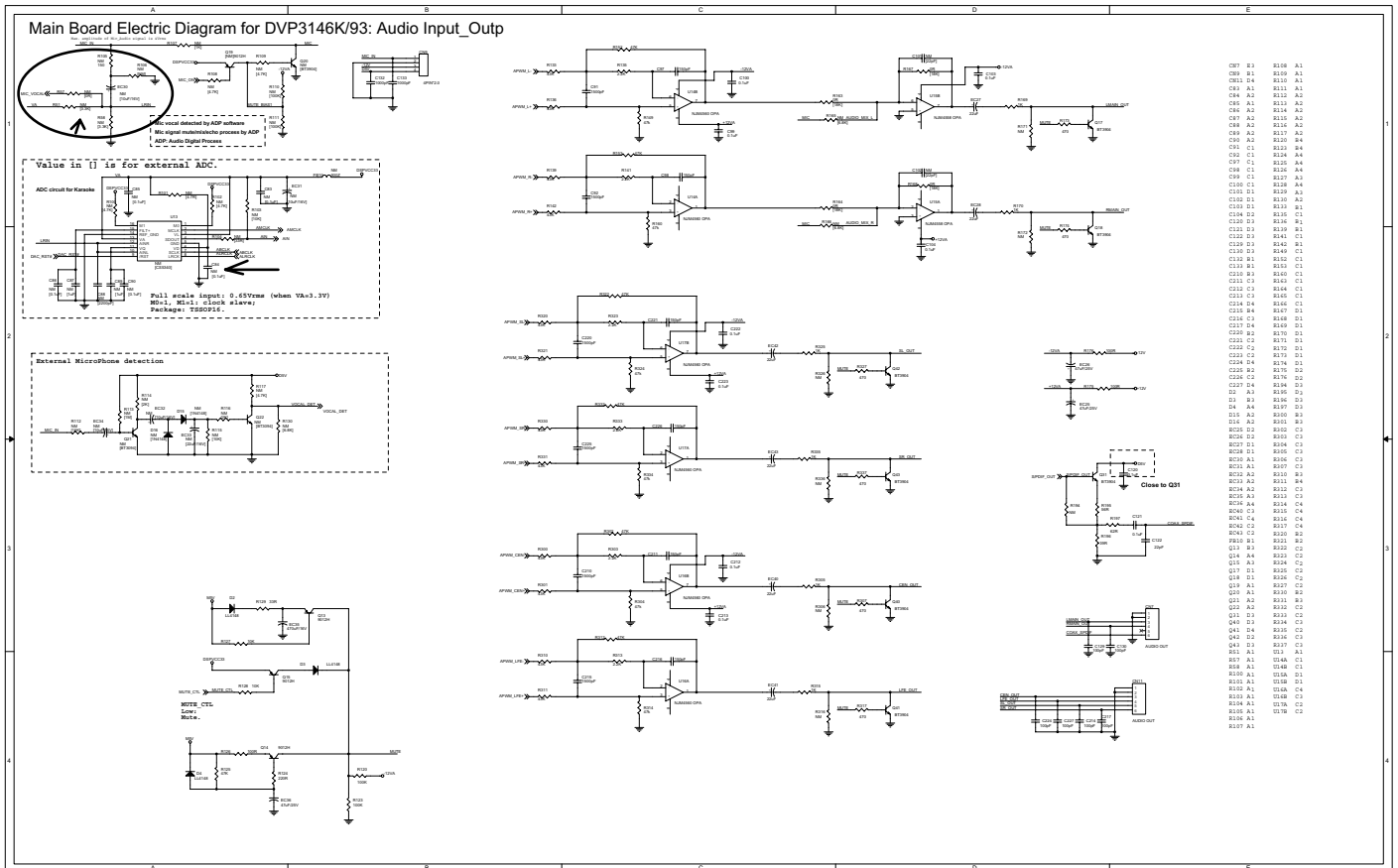


Main Board Print-Layout (Bottom Side) for DVP3126(K)/XX, DVP3146(K)/XX, DVP3148K/XX







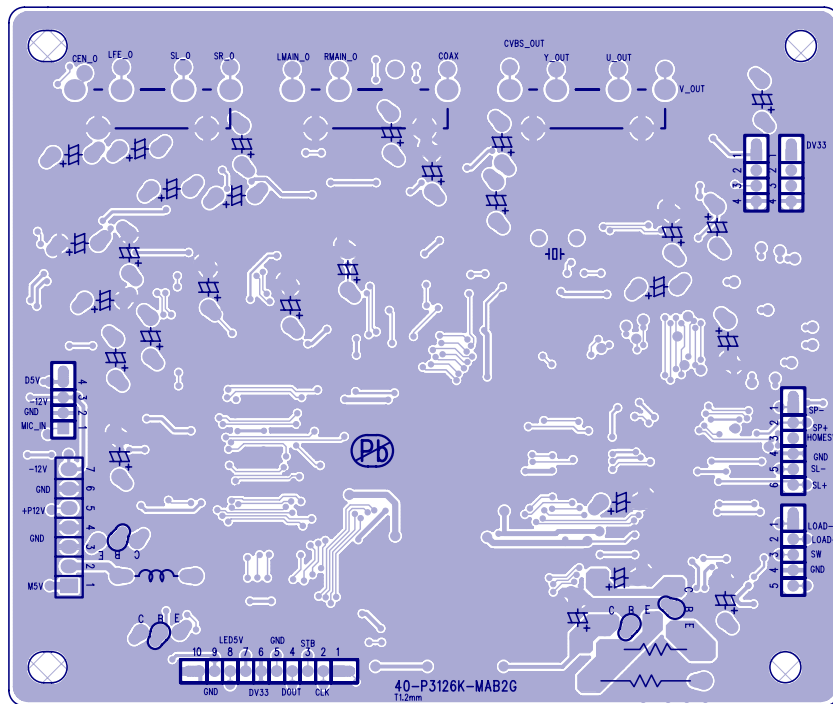




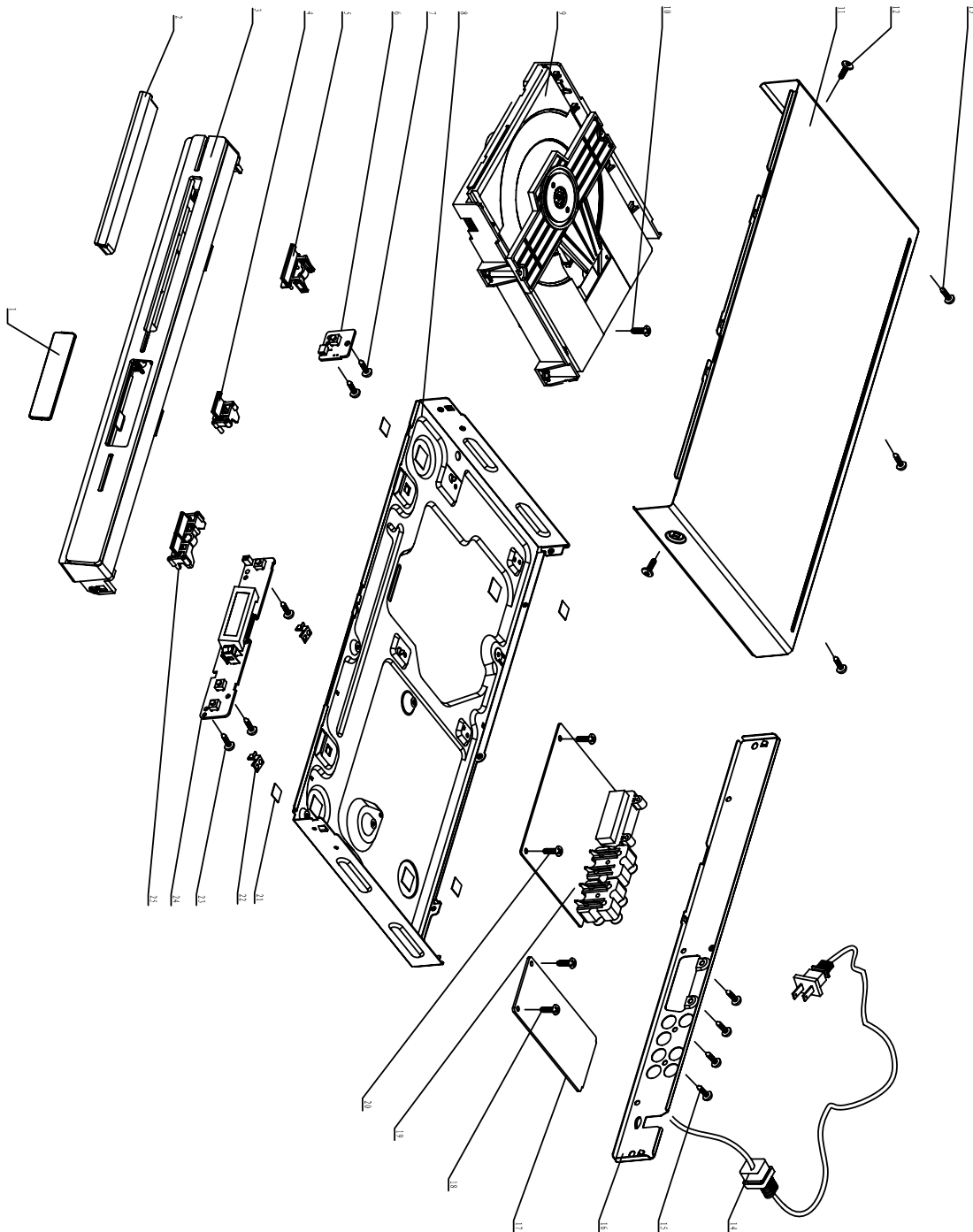




Main Board Print-Layout (Bottom Side) for DVP3146K/93



## DVP3126/XX,DVP3146/XX Mechanical Exploded View



Remark: It's a general Mechanical Exploded View for DVP3126/XX,DVP3146/XX,  
Detailed information please refer to Model set.

Ass'y1 is the assembled component for location 1,3,4,5,25

## ENCASING & ACCESSORIES PARTS LIST

## Accessory

| No    | 12NC No.     | Part Name   | Q'ty |        |   |
|-------|--------------|---|------|--------|---|
| Assy1 | 996510002904 | Front Panel Ass'y for DVP3126/94 ,DVP3126X/94                       | 1    | PAC2   | 996510001203 RIGHT BUFFER   |
|       | 996510002893 | Front Panel Ass'y for DVP3126/98/96/51                              |      | PAC1   | 996510001202 LEFT BUFFER  |
|       | 996510002683 | Front Panel Ass'y for DVP3146/94,DVP3146X/94                        |      | RC     | 996510001822 REMOTE CONTROL for<br>DVP3126/94 ,DVP3126x/94,<br>DVP3146/94,DVP3146x/94     |
| 2     | 996510002682 | Front Door Ass'y for DVP3146/94,DVP3146X/94                         | 1    | RC     | 996510001806 REMOTE CONTROL for DVP3126/98/51   |
|       | 996510002892 | Front Door Ass'y for DVP3126/94/98/96/5 1                           |      | PAC8   | 996510001106 VIDEO CABLE 1500mm   |
| 6     | 996510001163 | Ass'y-Switch Board  | 1    | PAC3   | 996510002903 DISPLAY BOX  |
|       |              |   |      | PAC3   | 996510002681 DISPLAY BOX for DVP3146x/94  |
| 8     | 996510001177 | Bottom Cabinet  | 1    | PAC5   | 996510002668 POLY BAG for DVP3146/94,DVP3146x/94  |
| 9     | 996510001805 | Loader for DVP3126/94/98,DVP3126x/94                                | 1    |        |   |
|       | 996510002887 | Loader for DVP3126/96/51  |      |        |   |
|       | 996510001166 | Loader for DVP3146/94,DVP346x/94                                    |      |        |   |
| 11    | /            | Top cover   | 1    | C0N302 | 996510001171 2P HS DVP3126/94 ,DVP3126x/94  |
|       | 996510001682 | Top cover for DVP3126/94,DVP3126x/94,DVP3146/94,<br>DVP3146x/94     |      | CON301 | 996510001172 HS 9PIN DVP3126/94,DVP3126x/94   |
| 14    | 996510001179 | Power Cord for DVP3126/94/51,DVP3126x/94,<br>DVP3146/94,DVP3146X/94 | 1    | CN2    | 996510001168 24PIN HS DVP3146/94 ,DVP3146x/94   |
| 16    | 996510001537 | Power Cord for DVP3126/98   |      | CN1    | 996510001169 TJC3-7Y/SCN-7P L=80MM for DVP3126<br>/94/98 , DVP3126x/94                    |
|       | 996510002223 | Power Cord for DVP3126/96   |      | CN3    | PH-5Y/PH-5Y L=130MM 1 for DVP3126/94,   |
| 17    | 996510002899 | Back Panel for DVP3126/94,DVP3126x/94                               | 1    | CN1    | 996510001192 DVP3126X/94,DVP3146/94,DVP3146x/94<br>CABLE HS 7P 2468#26 for DVP3126/96/51, |
|       | 996510001883 | Back Panel for DVP3146/94 ,DVP3146x/94                              |      | CN4    | 996510001904 DVP3146/94,DVP3146x/94   |
|       | 996510002901 | Back Panel for DVP3126/98   |      | CN4    | 996510001170 6PIN HS for DVP3146/94,DVP3146x/94<br>/ 6PIN HS for DVP3126/51               |
|       | 996510002890 | Back Panel for DVP3126/96   |      |        |   |
| 19    | 996510001820 | Ass'y-Power Board for DVP3126/94,DVP3126x/94                        | 1    |        |   |
|       | 996510001190 | Ass'y-Power Board for DVP3126/98                                    |      |        |   |
|       | 996510001878 | Ass'y-Power Board for DVP3146/94/96<br>DVP3126/51,DVP3146x/94       |      |        |   |
|       | 996510002902 | Ass'y-Main Board for DVP3126/94,DVP3126x/94                         | 1    |        |   |
|       | 996510002891 | Ass'y-Main Board for DVP3126/98/96/51                               |      |        |   |
|       | 996510002680 | Ass'y-Main Board for DVP3146/94,DVP3146x/94                         |      |        |   |
| 21    | /            | Pad 4   | 1    |        |   |
| 22    | /            | ESD Pad 1   | 1    |        |   |
| 24    | 996510001164 | Ass'y-Front Board DVP3126/94,DVP3126x/94                            | 1    |        |   |

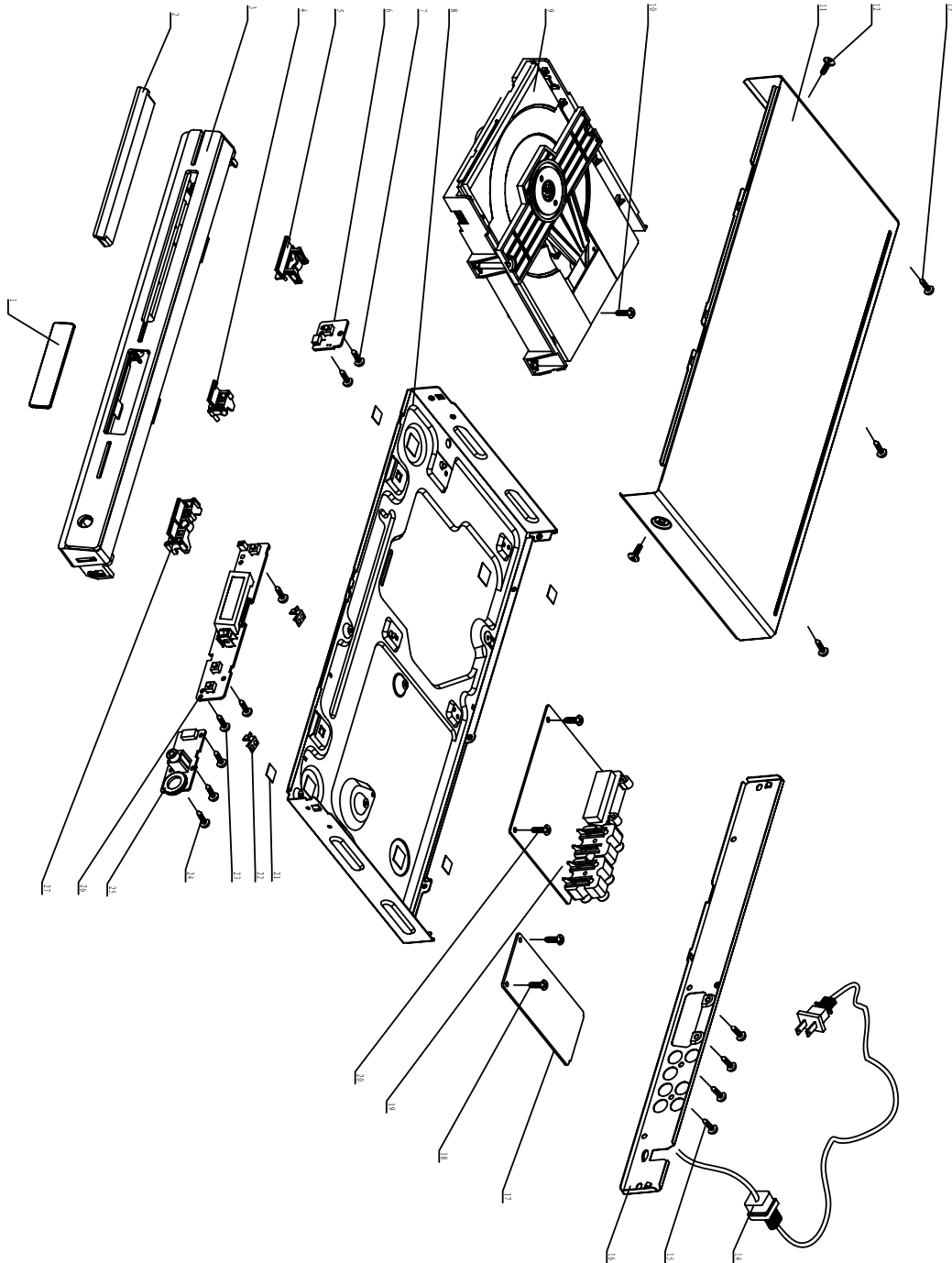
## Cable

## SCREW LIST

| No | 12NC No. | Part Name               | Q'ty |
|----|----------|-------------------------|------|
| 7  | /        | S/T Screw B2.6X8 BF     | 2    |
| 10 | /        | Machine Screw           | 1    |
| 12 | /        | Triangle M/C Screw 3*6  | 2    |
| 13 | /        | Triangle M/C Screw B3*6 | 3    |
| 15 | /        | S/T Screw B 3 X 8 BF    | 4    |
| 18 | /        | Triangle M/C Screw B3*6 | 2    |
| 20 | /        | Triangle M/C Screw B3*6 | 2    |
| 23 | /        | S/T Screw B2.6X8 BF     | 3    |

Note: Only the parts mentioned in this list are normal service spare parts

## DVP3126K/XX,DVP3146K/XX,DVP3148K/XX Mechanical Exploded View



Remark: It's a general Mechanical Exploded View for DVP3126K/XX,DVP3146K/XX,DVP3148K/XX  
Detailed information please refer to Model set.

Ass'y1 is the assembled component for location 1,3,4,5,27

**ENCASING & ACCESSORIES PARTS LIST**

**ENCASING & ACCESSORIES PARTS LIST**

| No           | 12NC No.                         | Part Name  | Qty |
|--------------|----------------------------------|--|-----|
| Ass'y1       | 996510004028                     | Front Panel Ass'y for DVP3126K/61  | 1   |
|              | 996510002889                     | Front Panel Ass'y for DVP3126K/56/96   |     |
|              | 996510002678                     | Front Panel Ass'y for DVP3146K/93  |     |
|              | 996510002671                     | Front Panel Ass'y for DVP3146K/96/98   |     |
|              | /                                | Front Panel Ass'y for DVP3148K/51  |     |
| 2            | 996510002896                     | Front Panel Ass'y for DVP3126K/98/51/93  |     |
|              | /                                | Front Panel Ass'y for DVP3146K/51  |     |
|              | 996510002888                     | Front Door Ass'y for DVP3126K/61/56/96/98/51/93                                | 1   |
| 996510002677 | Front Door Ass'y for DVP3146K/93 |  |     |
|              | 996510002670                     | Front Door Ass'y for DVP3146K/96/98/51   |     |
|              | /                                | Front Door Ass'y for DVP3148K/51   |     |
| 6            | 996510001163                     | Ass'y-Switch Board for DVP3146K/93   | 1   |
|              |                                  | DVP3126K/96/56/61/98/51/93   |     |
|              | 996510001188                     | Ass'y-Switch Board for DVP3146K/96/98/51,<br>DVP3148K/51                       |     |
| 8            | 996510001177                     | Bottom Cabinet   | 1   |
| 9            | 996510001805                     | Loader for DVP3126K/98   | 1   |
|              | 996510002887                     | Loader for DVP3126K/56/96/51/61/93   |     |
|              | 996510001864                     | Loader for DVP3146K/93/51,DVP3148K/51  |     |
|              | 996510001166                     | Loader for DVP3146K/96/98  |     |
| 11           | 996510001682                     | Top cover for DVP3126K/61/56/96/98/51/93<br>DVP3146K/93/96/51,DVP3148K-51      | 1   |
|              | /                                | Top cover for DVP3146K/98  |     |
| 14           | 996510005741                     | Power Cord for DVP3126K/61   | 1   |
|              | 996510001206                     | Power Cord for DVP3126K/93   |     |
|              | 996510001179                     | Power Cord for DVP3126K/56/51,DVP3148K/51<br>DVP3146K/51                       |     |
|              | 996510002223                     | Power Cord for DVP3126K/96,DVP3146K/96   |     |
|              | 996510001537                     | Power Cord for DVP3146K/98,DVP3126K/98   |     |
| 16           | 996510005742                     | Rear Cabinet for DVP3126K/61   | 1   |
|              | 996510002897                     | Rear Cabinet for DVP3126K/93   |     |
|              | /                                | Rear Cabinet for DVP3126K/56/51  |     |
|              | /                                | Rear Cabinet for DVP3126K/96   |     |
|              | /                                | Rear Cabinet for DVP3146K/93   |     |
|              | /                                | Rear Cabinet for DVP3146K/96   |     |
|              | /                                | Rear Cabinet for DVP3146K/98   |     |
|              | /                                | Rear Cabinet for DVP3148K/51<br>DVP3146K/51                                    |     |
| /            | Rear Cabinet for DVP3126K/98     |  |     |
| 17           | 996510001878                     | Ass'y-Power Board for DVP3126K/56/96/51/61/93<br>DVP3146K/93/96/51,DVP3148K/51 | 1   |
|              | 996510002667                     | Ass'y-Power Board for DVP3146K/98,<br>DVP3126K/98                              |     |
| 19           | 996510002886                     | Ass'y-Main Board for DVP3126K/61/56/96/98/51                                   | 1   |
|              | 996510002894                     | Ass'y-Main Board for DVP3126K/93   |     |
|              | 996510002673                     | Ass'y-Main Board for DVP3146K/93   |     |
|              | 996510001877                     | Ass'y-Main Board for DVP3146K/96/98/51<br>DVP3148K/51                          |     |
| 21           | /                                | Pad  | 4   |
| 22           | /                                | ESD Pad  | 1   |
| 25           | 996510001183                     | Ass'y-OK Board for DVP3126K/61/98/51,<br>DVP3146K/93/96/98/51,DVP3148K/51      | 1   |
|              | 996510002674                     | Ass'y-OK Board for DVP3126K/93   |     |
|              | 996510002674                     | Ass'y-OK Board for DVP3126K/56/96  |     |

| No               | 12NC No.     | Part Name  | Qty |
|------------------|--------------|--|-----|
| 26               | 996510001164 | Ass'y-Front Board for DVP3126K/61/56/96/51/93<br>DVP3146K/93                                 | 1   |
|                  | 996510001189 | Ass'y-Front Board for DVP3146K/96/98/51<br>DVP3148K/51                                       |     |
| 7                | /            | S/T Screw B2.6X8 BF  | 2   |
| 10               | /            | Machine Screw  | 1   |
| 12               | /            | Triangle M/C Screw 3*6   | 2   |
| 13               | /            | Triangle M/C Screw B3*6  | 3   |
| 15               | /            | S/T Screw B 3 X 8 BF   | 4   |
| 18               | /            | Triangle M/C Screw B3*6  | 2   |
| 20               | /            | Triangle M/C Screw B3*6  | 2   |
| 23               | /            | S/T Screw B2.6X8 BF  | 3   |
| 24               | /            | S/T Screw B2.6X8 BF  | 2   |
| <b>Accessory</b> |              |  |     |
| AVCAB            | 996510001106 | VIDEO CABLE 1500mm   | 1   |
| RC               | 996510001778 | REMOTE CONTROL for DVP3126K/96/56/98/51/61   | 1   |
| RC               | 996510002675 | REMOTE CONTROL for DVP3126K/93   |     |
| RC               | 996500034181 | REMOTE CONTROL for DVP3146K/96/51/98<br>DVP3148K/51  |     |
| RBuffer          | 996510001203 | RIGHT BUFFER for DVP3126K/93/56/96/51/93/61<br>DVP3146K/93/51                                | 1   |
| LBuffer          | 996510001202 | LEFT BUFFER  | 1   |
| DBOX             | 996510005744 | COLOUR BOX for DVP3126K/61   | 1   |
| DBOX             | 996510002895 | COLOUR BOX for DVP3126K/93   |     |
| DBOX             | 996510002676 | COLOUR BOX for DVP3146K/93   |     |
| DBOX             | /            | COLOUR BOX for DVP3126K/51   |     |
| DBOX             | /            | COLOUR BOX for DVP3146K/51   |     |
| DBOX             | /            | COLOUR BOX for DVP3146K/98   |     |
| IFU              | 996510005756 | OPERATION MANUAL for DVP3126K/61   | 2   |
| FUSE             | 996510001780 | FUSE 2A 250V 5X20MM  | 1   |
| Battery          | 996510003815 | BAT 1.5V/R03/AAA 1-PACK  | 1   |
| <b>Cable</b>     |              |  |     |
| CON301           | 996510001172 | HS 9PIN  | 1   |
| CN601            | 996510001184 | 4P HS  | 1   |
| CN2              | 996510001168 | 24PIN HS for DVP3126K/56/96/98/51/93/61,DVP3146K/96/51/98                                    | 1   |
| CON2             | 996510001904 | CABLE HS 7P 2468#26 60 for DVP3126K/56/61/93/<br>96/98/51, DVP3146K/93/96/98/51, DVP3148K/51 | 1   |
| CON302           | 996510001171 | 2P HS for DVP3126K/96/98, DVP3146K/93  | 1   |
| CON302           | 996510004064 | 2P HS for DVP3126K/51/61/93  | 1   |
| CON302           | 996510001193 | PH-2Y/SAW-2P L=170MM for DVP3146K/96   | 1   |
| CON302           | /            | 2P HS for DVP3146K/51/98   | 1   |
| CN3              | 996510001192 | PH-5Y/PH-5Y for DVP3126K/56/96/98,<br>DVP3146K/96/98, DVP3148K/51                            | 1   |
| CN3              | /            | PH-5Y/PH-5Y for DVP3126K/51/61/93, DVP3146K/51   | 1   |
|                  | 996510004063 | CABLE PH-5Y/PH-5Y L=130MM for DVP3126K/61/93   |     |
| CN4              | 996510001170 | 6PIN HS for DVP3146K/96  | 1   |
| CN4              | /            | 6PIN HS for DVP3126K/51/61/93, DVP3146K/98   | 1   |
| CN4              | 996510001222 | HS 6P PH-6Y/PH-6Y for DVP3146K/93/51   | 1   |

Note:Only the parts mentioned in this list are normal service spare parts

## 8-1

### REVISION LIST

#### **Version 1.0**

\*Initial release

#### **Version 1.1**

\* Update Service manual to include 3126/51,3126k/51

\* Correction of Partcode to Philips 12nc

#### **Version 1.2**

\* Include DVP3126X/94 and DVP3146X/94 models

Remark: This Service manual only for Philips Service repairment, Please Don't transmitt or forward it to others.