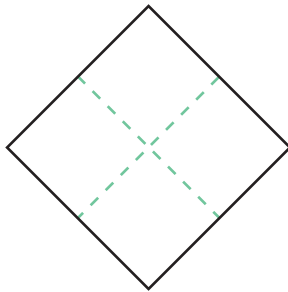


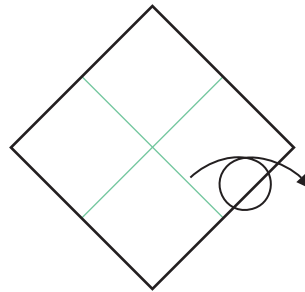
6. BOXES & BOWLS

6.1. Boxes

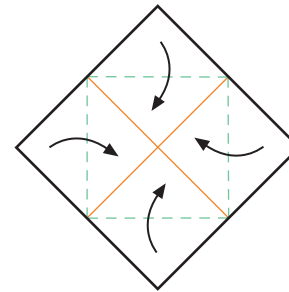
6.1.1. Masu Box



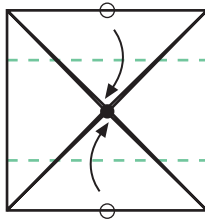
6.1.1\_1  
Fold and unfold two separate creases that divide the sheet into four small squares.



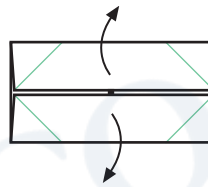
6.1.1\_2  
Note the two long valley folds. Turn the paper over.



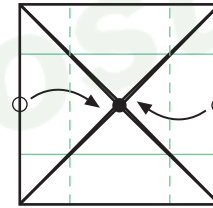
6.1.1\_3  
The existing folds are now mountain folds. Fold the corners to the centre.



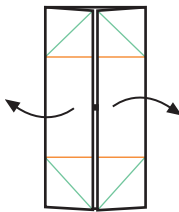
6.1.1\_4  
Fold the top and bottom edges to the centre point.



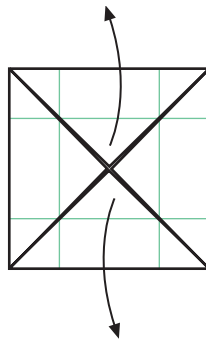
6.1.1\_5  
Unfold Step 4.



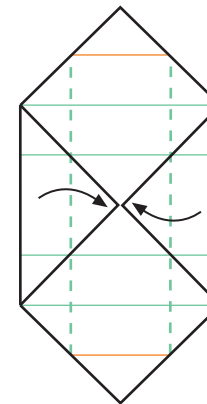
6.1.1\_6  
Similarly, fold the left and right edges in to the centre point.



6.1.1\_7  
Unfold Step 6.



6.1.1\_8  
Unfold the top and bottom triangles only.



6.1.1\_9  
Fold the left and right edges to the centre line.