

The Epic Egg Hunt

What you'll need:



Wool
(Two to three balls)



Direction Signs
(Printed from our template)



Lolly Sticks
(Optional)



Glue
(Or sellotape)



Chocolate Eggs
(Mmmm...)



Cotton Wool
(Or candyfloss!)

Setting the scene

Decide where you are going to set your Easter Hunt. Then plan out the route you want your little ones to take, laying a trail with the wool.



Place direction signs along the route to provide clues to help your little ones find the hidden eggs.



Create 'Puff' baskets out of cotton wool or candyfloss and lay the chocolate eggs in them. Hide the baskets in different locations along the route.



Telling the story

Well it all started when the Easter Bunny broke his leg...



It was the week before Easter and things at Egg HQ were tense – the Easter Bunny was out of action after falling off his trampoline trying to land the perfect back flip. There was no way he could make his rounds and deliver the chocolate eggs this year. The bosses were frantic. They needed someone to step in. But who could they turn to...?

That's when a small Whizzlygig stood up and said "I'll do it!".

Now Whizzlygigs are not known for their egg-delivering abilities. In fact, they spend most of their time in the Puff Ducts of a Hippo named Daphne, where they collect the puff that's turned into breath. But this Easter there was no other option.

Thing is, this Whizzlygig had never had to read a map before and she kept getting lost. So she decided that instead of delivering eggs direct to children's doors, she would leave a trail for them to follow.



Now it's time for you to start your hunt for the lost Easter eggs...

Make your own Whizzlygig!

What you'll need:



Scissors
(Careful!)



Cardboard
(Cereal box?)



Wool
(Any colour)



Pipe cleaners
(For arms and legs)



Felt
(Colourful)

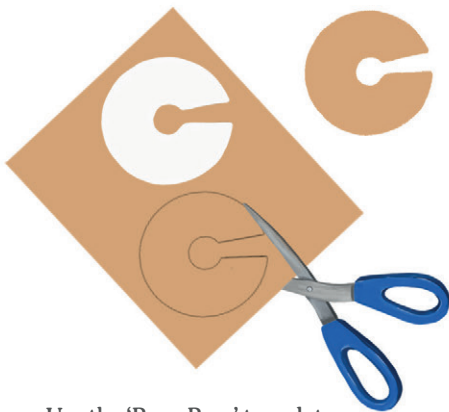


Glue
(Or sellotape)



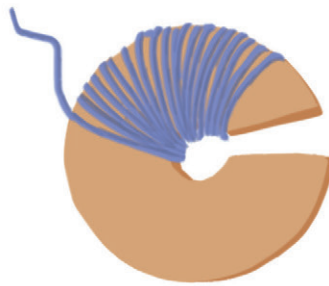
Googly Eyes
(I see you!)

Step 1.



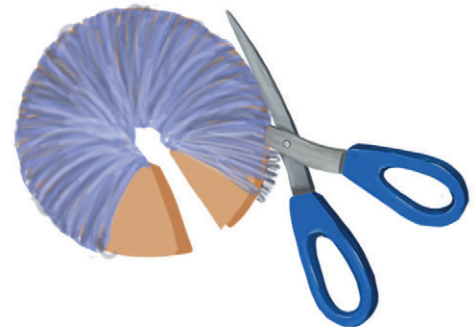
Use the 'Pom-Pom' template on the next page to cut out two cardboard disks.

Step 2.



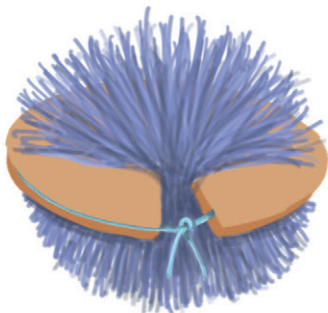
Place the two disks on top of each other and start wrapping the wool around them. Keep wrapping until you've covered the cardboard.

Step 3.



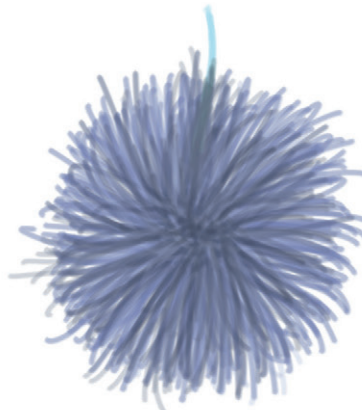
Insert your scissors in between the two pieces of cardboard and carefully cut around.

Step 4.



Using a separate piece of wool, wrap around the Pom-Pom in between the two cardboard disks and tie securely.

Step 5.



Slide the cardboard disks off and you now have a Whizzlygig body.

Step 6.

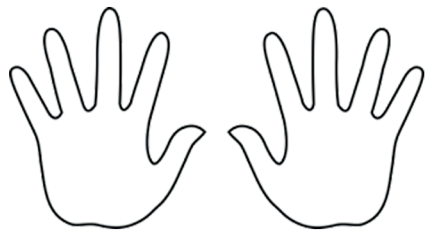


Use pipe-cleaners to add arms and legs to your Whizzlygig, cut out a felt beak, arms and legs, and add googly eyes.

Whizzlygig Templates

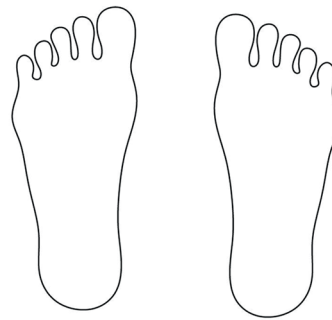
Whizzlygig Hands

(Use this as a template to make your Whizzlygig hands out of felt.)



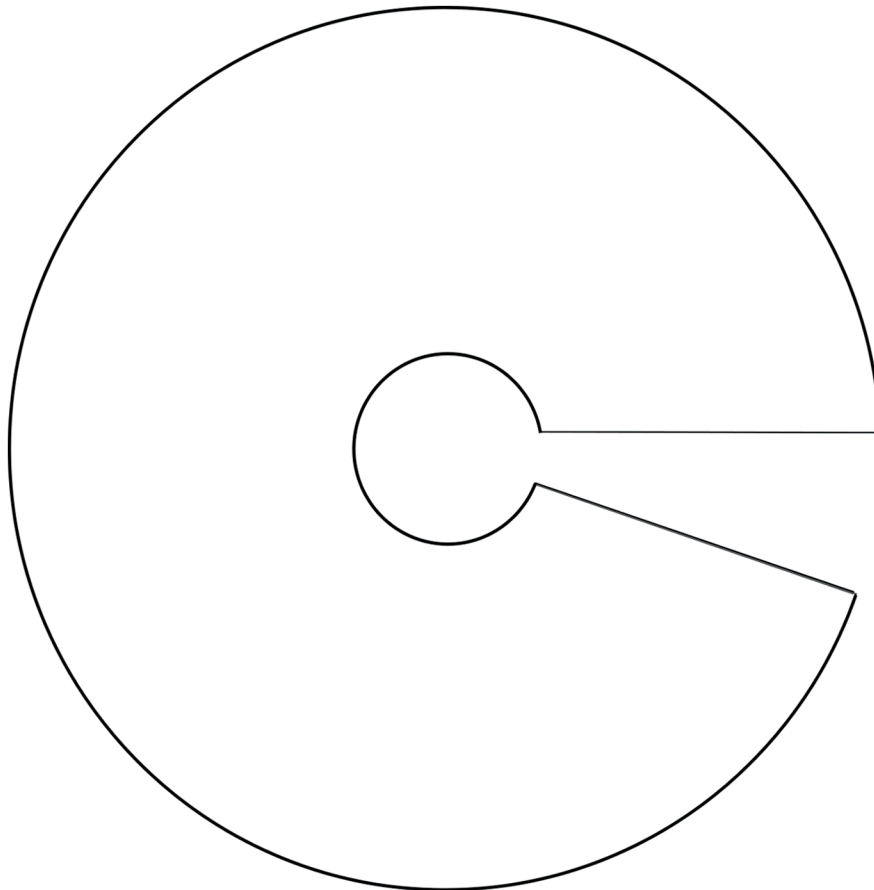
Whizzlygig Feet

(Use this as a template to make your Whizzlygig feet out of felt.)



Pom-Pom Maker

(Use this as a template to make your Pom-Pom maker out of card. You'll need two of these!)



Easter Hunt Signs

Print and cut out

Use these signs to guide your little ones around the Easter Hunt. We've even left you some blank ones to fill in yourself. Print, cut out and glue to a lolly stick – it's that easy :)



This way!



Keep going!



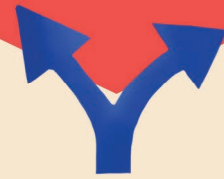
Follow me!



Oh no...
Dead end!



Are we lost?



What way
do we go?

