

COMPONENT SIDE  
SILKSCREEN COMP.

DDK INTERACTIVE CONSULTING SERVICES  
JOB: INSTRUCTABLE FLASHLIGHT

FAB PER IPC-A-600

MATERIAL: FR4 OR EQUIVALENT, EPOXY RESIN  
1 OZ. FINISHED COPPER CLAD OUTER LAYERS

OVERALL THICKNESS .062"

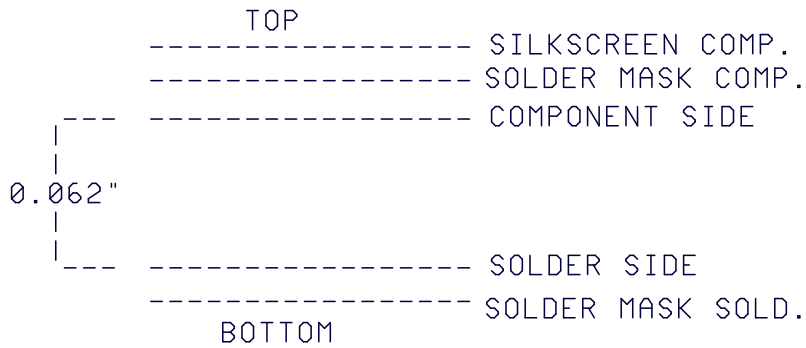
DRILLING: PLATE THROUGH HOLES WITH CU., .001" THICK MIN.  
ALL HOLE SIZES ARE AFTER PLATING  
HOLE LOCATION TOLERANCE IS +/- .003"  
IN RELATION TO CENTER

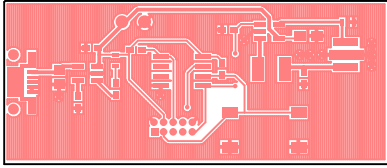
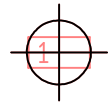
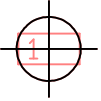
VIAS: ALL COULD BE FILLED

IN-PAD VIAS SHOULD HAVE PLATED COPPER ON PAD SIDE

BOARD IS: .010" / .010" TRACE / SPACE DESIGN  
FINISH: GOLD IMMERSION BOTH SIDES PER IPC-4552, 0.5um MIN.  
SOLDER MASK: LPI IPC-SM-840, COLOR GREEN  
SILKSCREEN: W/ HEAT RESISTANT WHITE EPOXY INK  
DO NOT ALTER ARTWORK, e.g. TO ADD LOGO OR DATE CODE  
PAD SIZE CAN BE MODIFIED TO MEET END FINISH  
WHEN PANELING, DEEP SCORE OR LEAVE MOUSEBITES  
LAYERS: 00 - TOP

LAYER STACK:

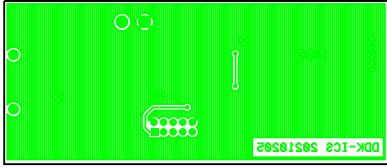
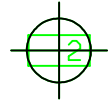
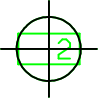




COMPONENT SIDE

DDK INTERACTIVE CONSULTING SERVICES  
JOB: INSTRUCTABLE FLASHLIGHT

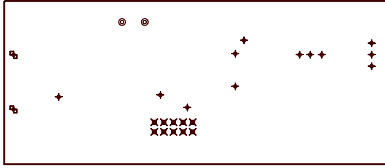
00 - TOP



SOLDER SIDE

DK INTERACTIVE CONSULTING SERVICES  
JOB: INSTRUCTABLE FLASHLIGHT

12 - BOTTOM



Component Side/Solder Side Holes				
SYMBOL	TOOL	SIZE	QTY	PLATED
⊕	T1	0.0100	12	YES
⊗	T2	0.0260	10	YES
⊙	T3	0.0460	2	YES
⊞	T4	0.0530	2	YES
Total			26	