

This block  
should be  
1"X1"

SU

Hood Center  
Cut 1 Face Cut 1 Li

4

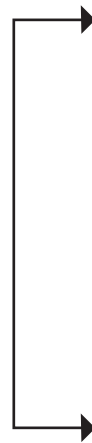
persimplesewing.com

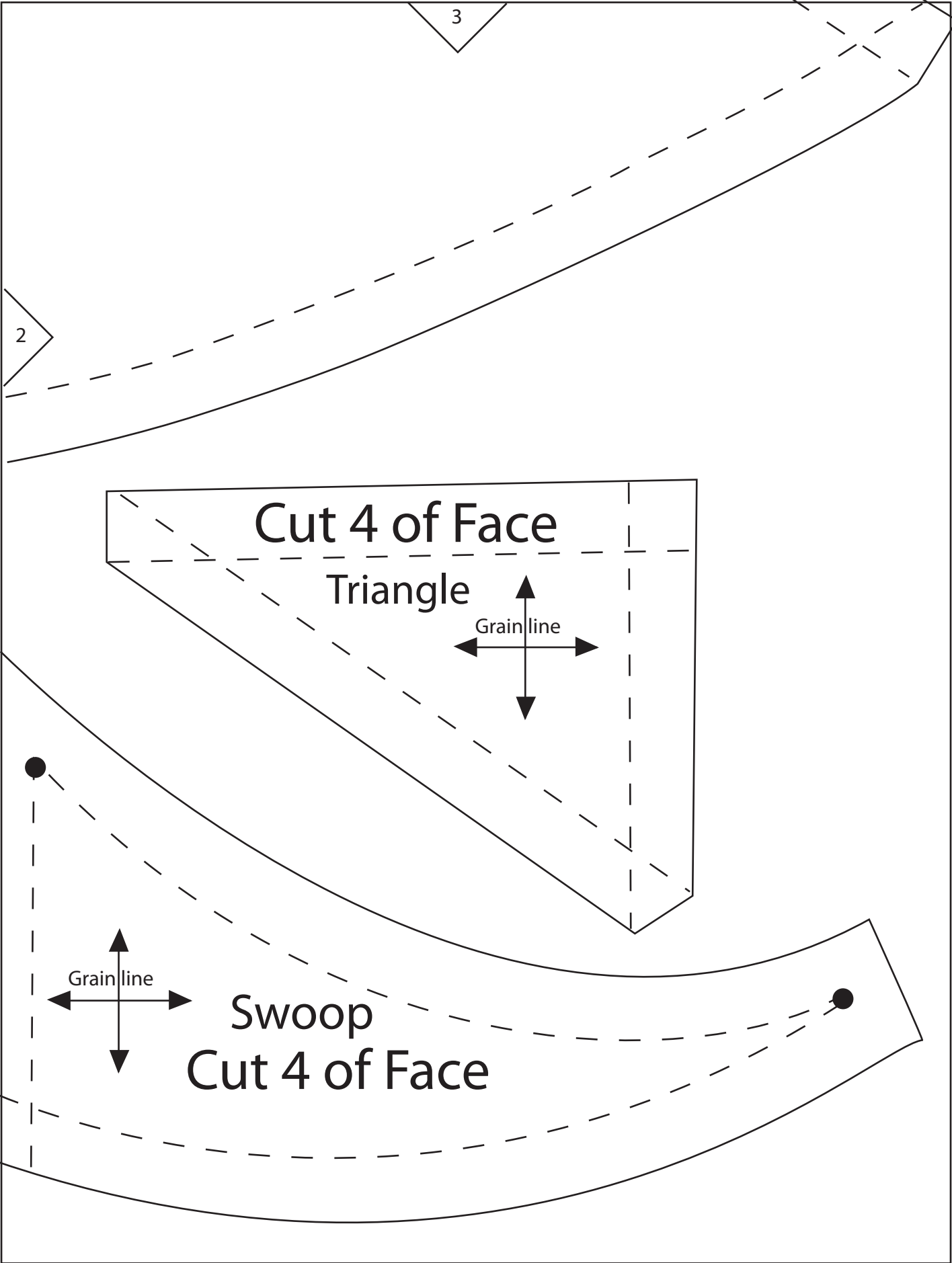
1

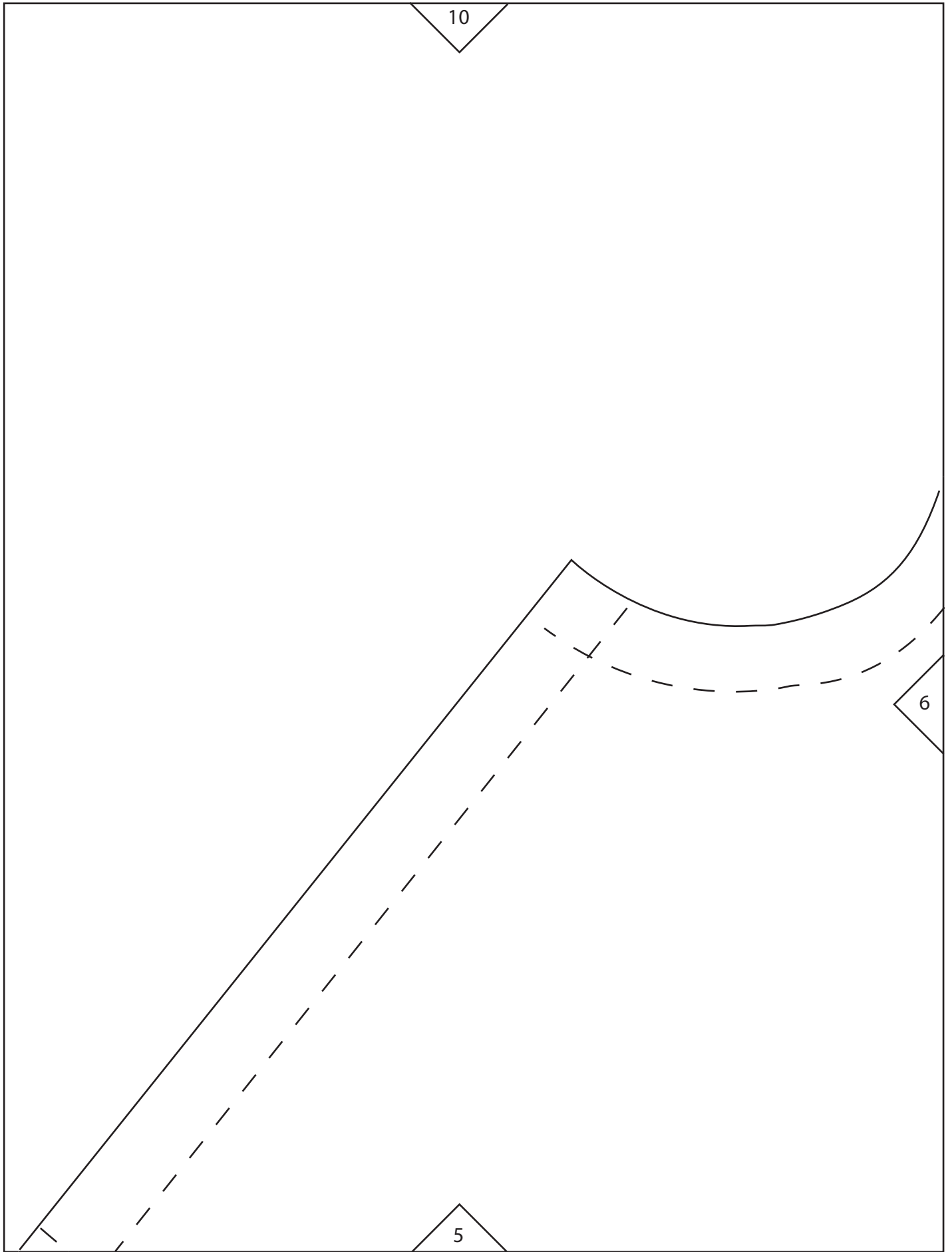
2

ning

Fold

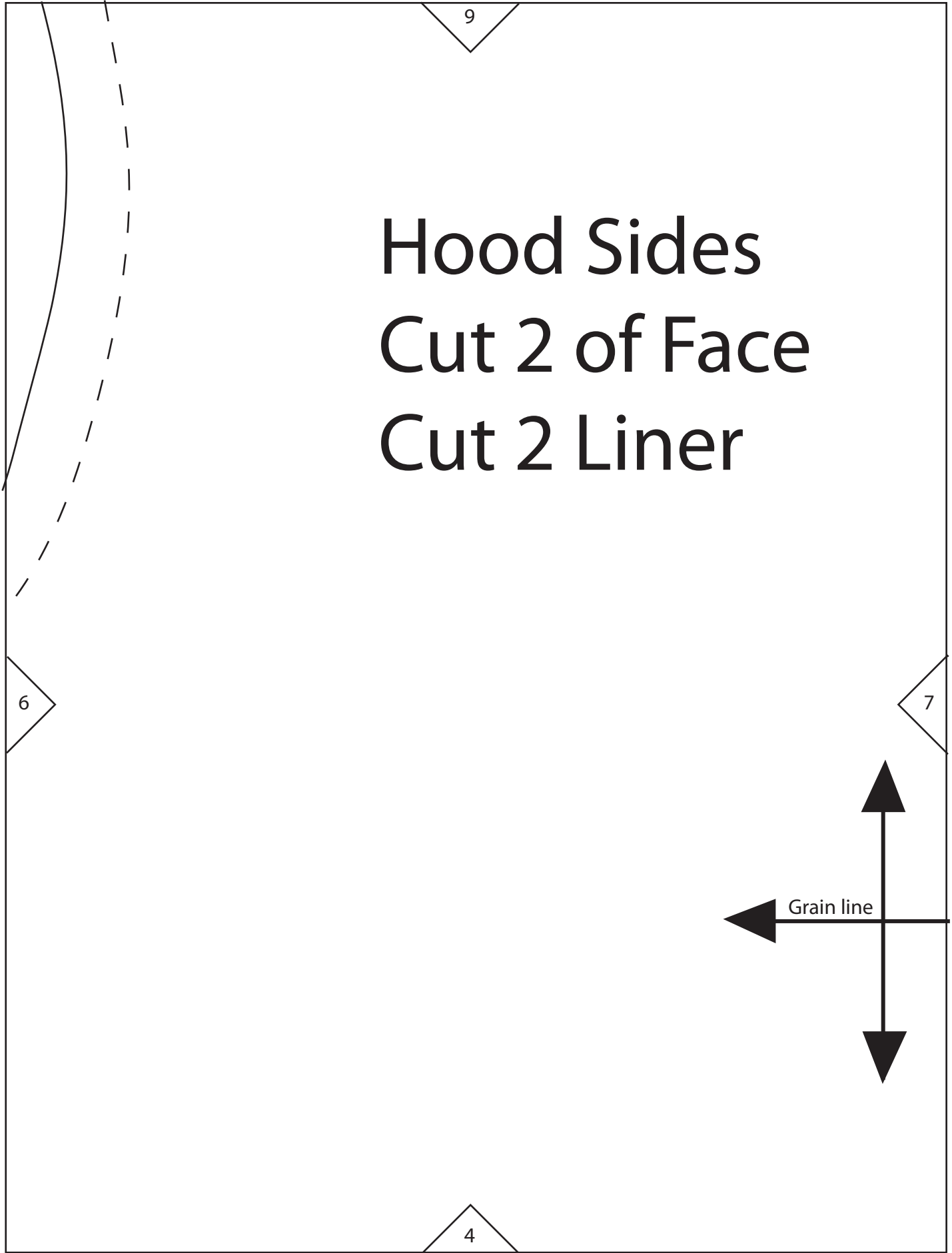






# Hood Sides

Cut 2 of Face  
Cut 2 Liner



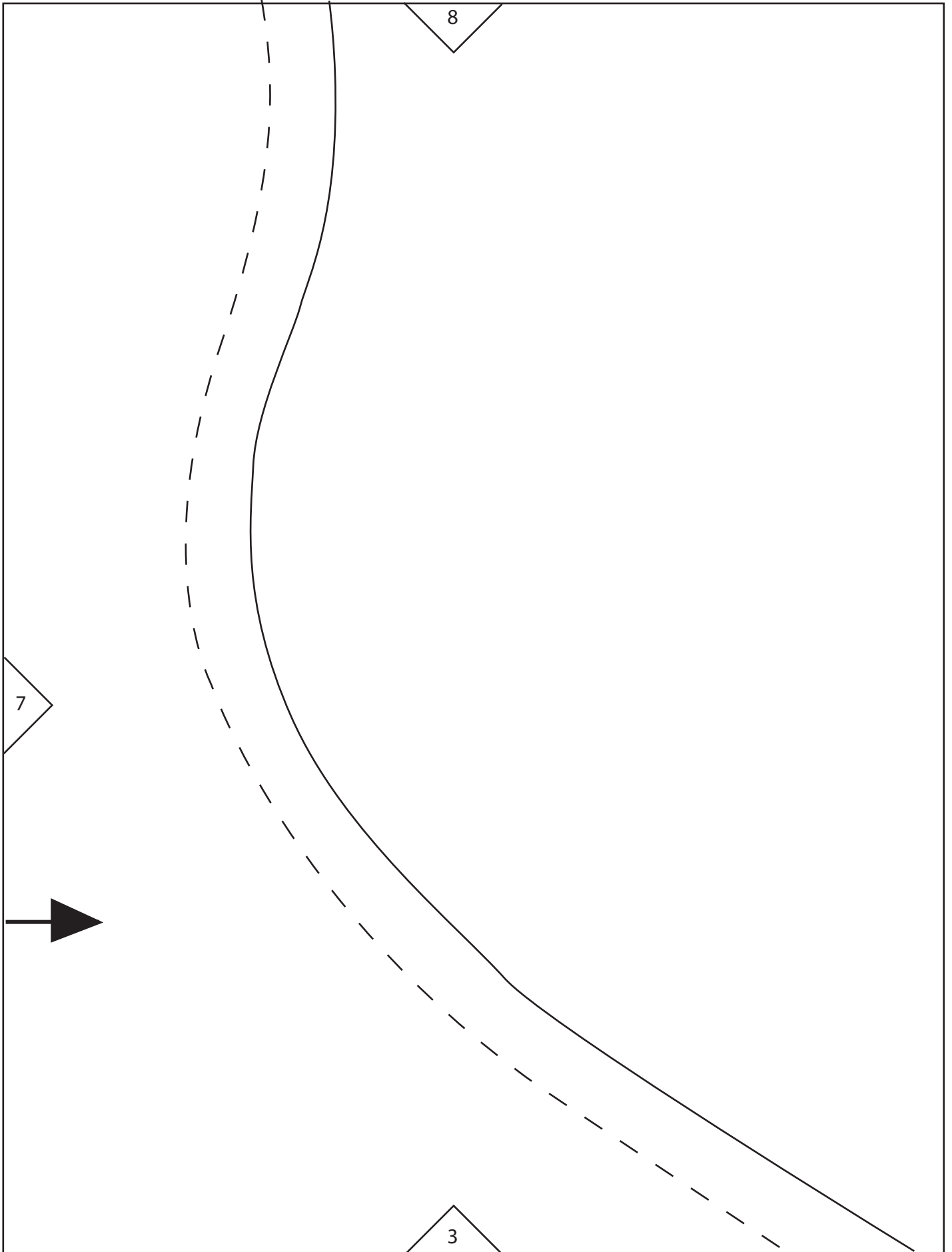
9

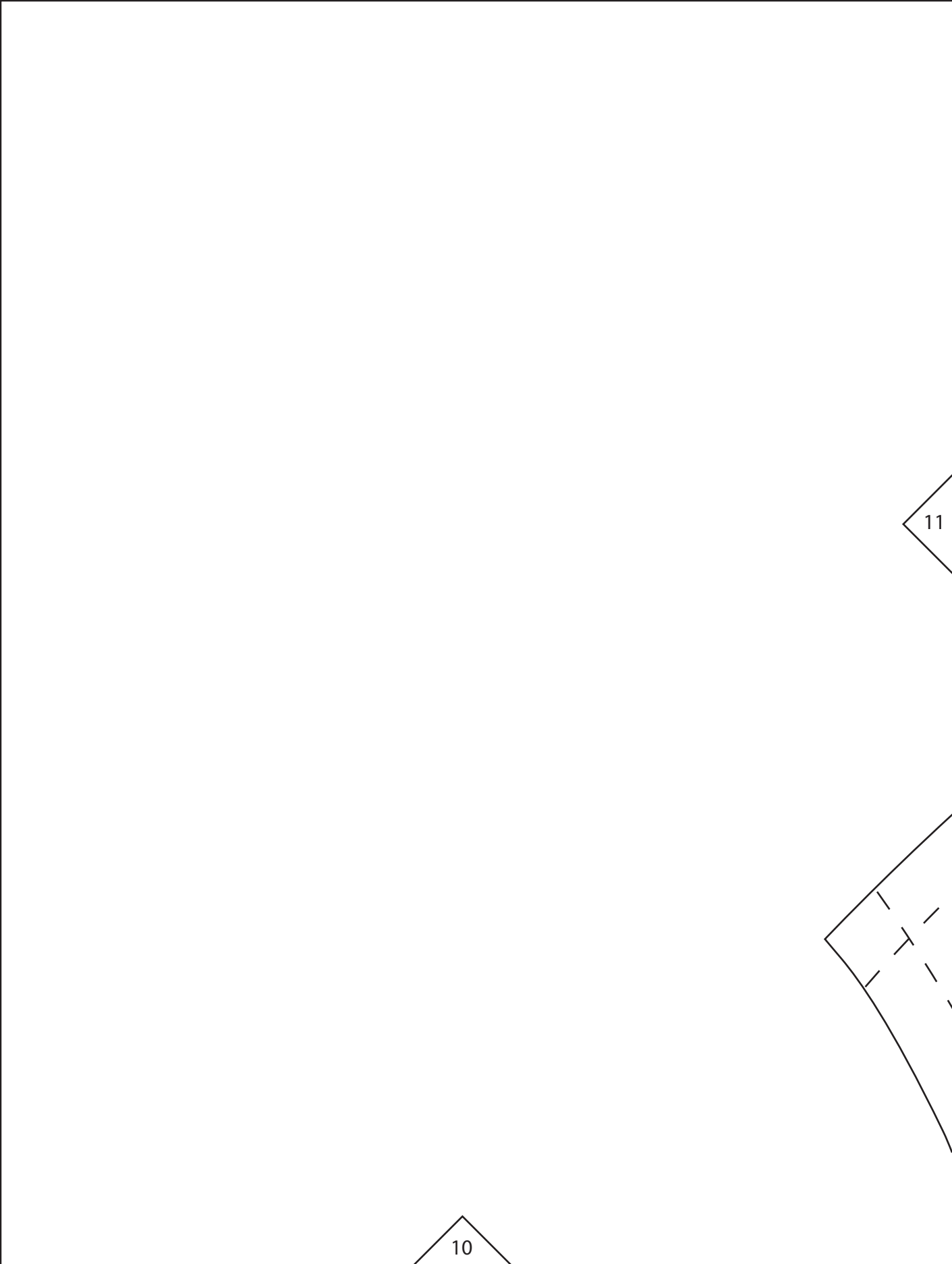
6

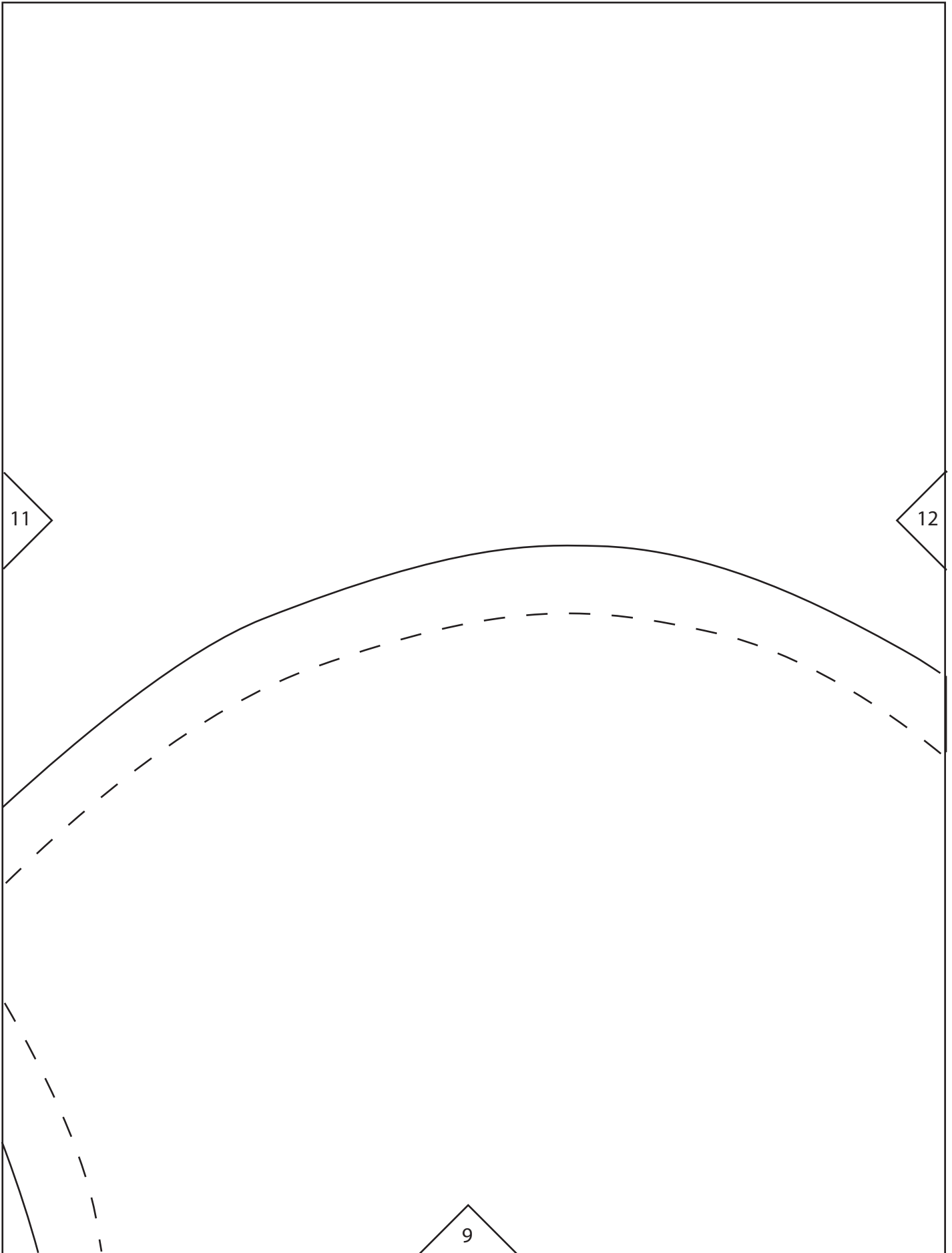
7

4

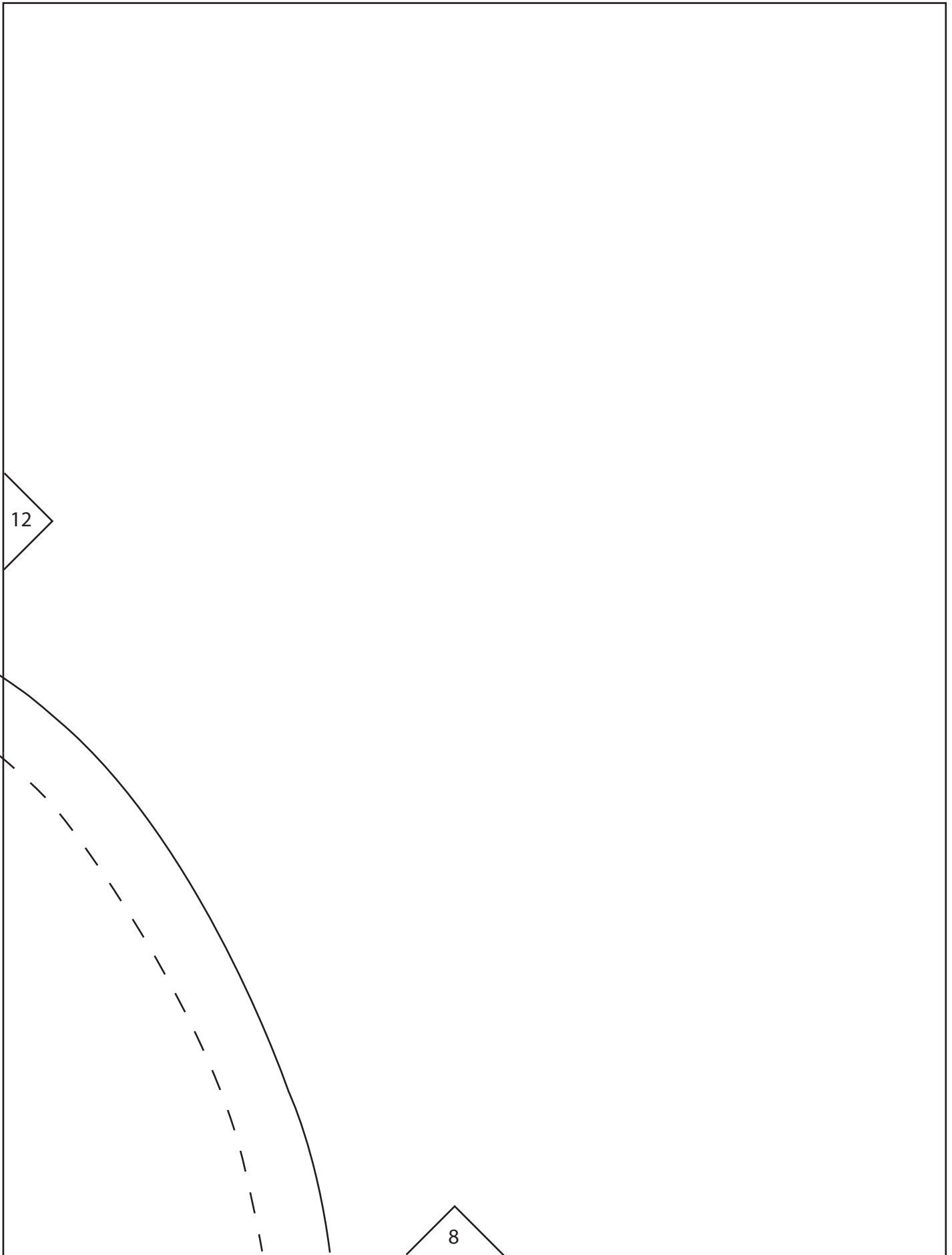
Grain line











# Assassin's Creed Inspired Hood

## By Super Simple Sewing

For stable knit fabric. If you are unable to find a good quality mid weight knit you can interface a lighter weight knit with stretch interfacing.  
If you choose to use something like fleece the details may be lost.  
You could cut the liner section in fleece.

Sewing Level: Advanced

Materials:

Thread

3/4 Yard face fabric

3/4 Yard lining

Interfacing if needed

Tools:

Sewing machine

Scissors

Pins

Iron



Be sure to have the proper needle for knits. My stable knit used a size 14 Universal Ball needle. This is probably the most important this for sewing knits. If you don't have the correct needle you will skip stitches, or your machine may not sew at all.

All seams are 1/2" seam allowance



1. Cut out pattern pieces, fabric is folded in half.



2. Pin a right and left of triangle together and sew piece along the long side for both sets.

3. Pin the left and right swoops on to the newly formed triangle.



4. Sew being sure to stop at the dot 1/2" from the edge.



5. Repeat for second triangle .  
6. Press seams open.



7. Pin the hood side to the hood back  
8. Sew with the hood back facing up.  
This will help it to ease in better.



9. Pin and sew the second side of hood to the back of hood.  
10. Repeat this process for the lining.  
11. Press the face side of the hood seams to the center.



12. Top stitch on the center hood section down both sides. This step is not necessary for the lining.



13. At the center of the hood pin the center of the triangle unit right sides together.



Continue pinning working out to the edges .  
Do this for the liner as well.

15. Sew from the dot to the dot at the other end.  
(About 1/2" from each end)



17. Top stitch the face fabric along this seam  
stopping 2" from each edge.



14. Pin the seams carefully so the seam and  
points match. It may take a few tries but it is worth  
the effort.



16. Press flat. The seam allowance should face  
toward the front



18. Pin and Sew together the center seam of the  
β for the face and the liner.



19. With right sides together pin both hood sections matching the seams and points. Be very aware of how the seams are facing. You will be sewing between the dots. Stopping to turn the seam allowances to the other side so you don't catch them.



First section of detail sewn



Second section with point sewn



Third section sewn



20. Reinforce the top of the point by stitching over the seam 1" from the point down to the point then another 1".

21. Trim back the point and any other extra pieces that will cause bulk in the seams.



22. Stitch the rest of the hood opening  
Clip along the bottom.



23. Turn right side out.

24. Press carefully. You don't want to see the lining peeking out.



This is what it will look like when finished



28. Press up 5/8" and pin in place.



25. Top stitch along each of the seams to accent the design.



26. Line up the outer and the liner of the hood and pin together.

27. Zigzag over this edge or serge if you have one.



29. Sew from the right side for a more even 1/2" seam allowance.

