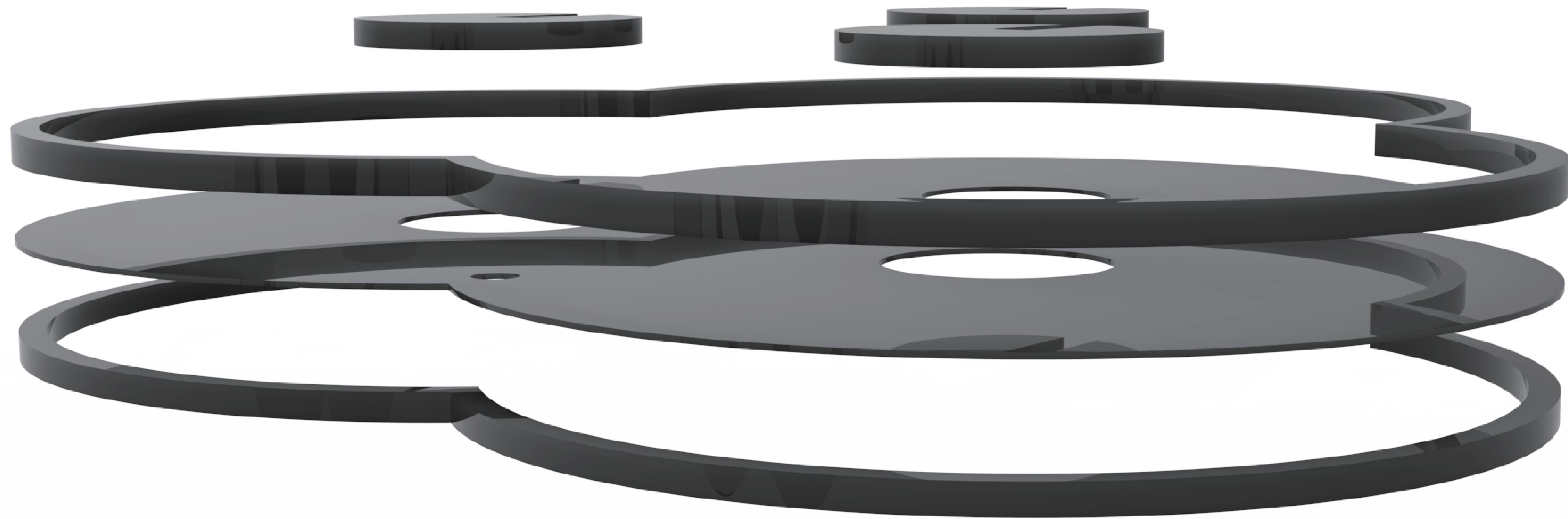


First, Prepare 3.4.6.7.



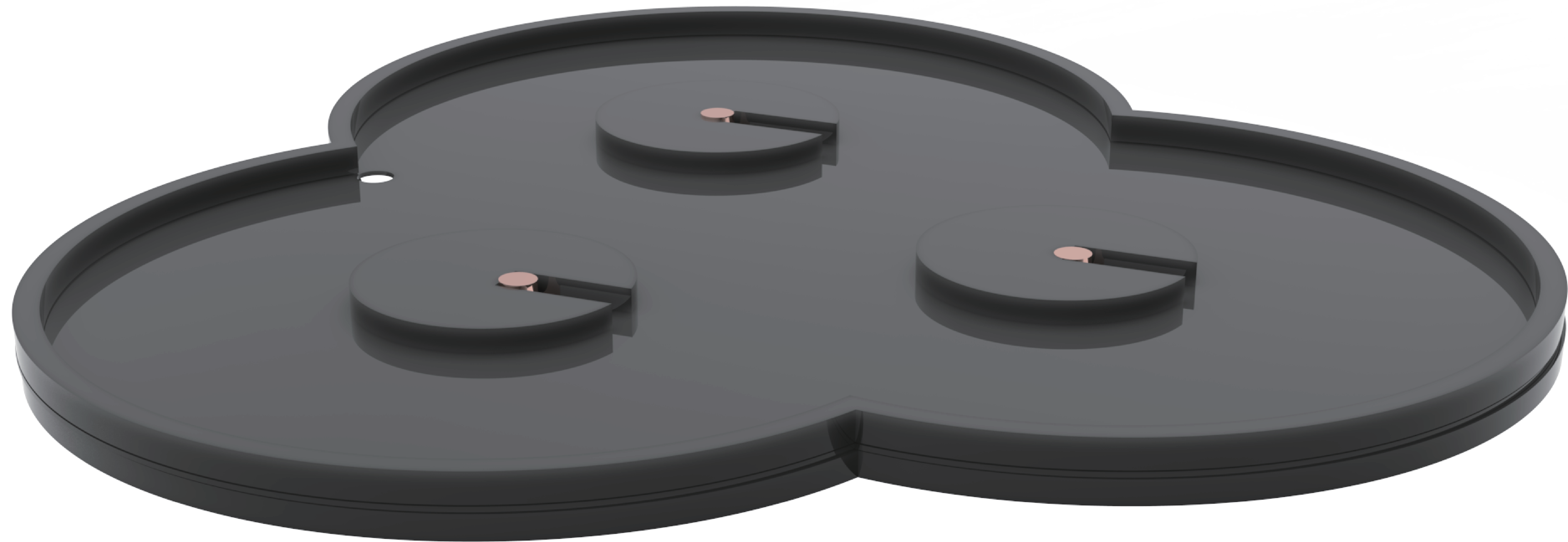
Second. Paste it in order of 7.6.4 parts with a strong adhesive.



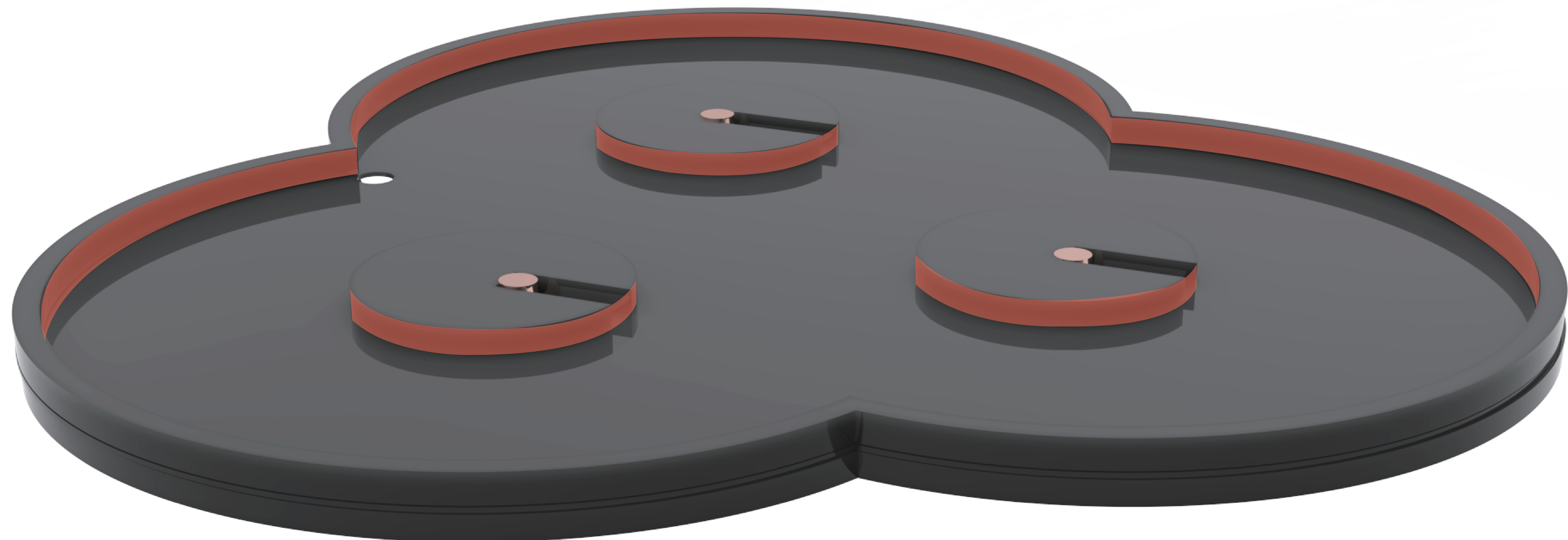
Third. Fix the potentiometer 3part with glue gun



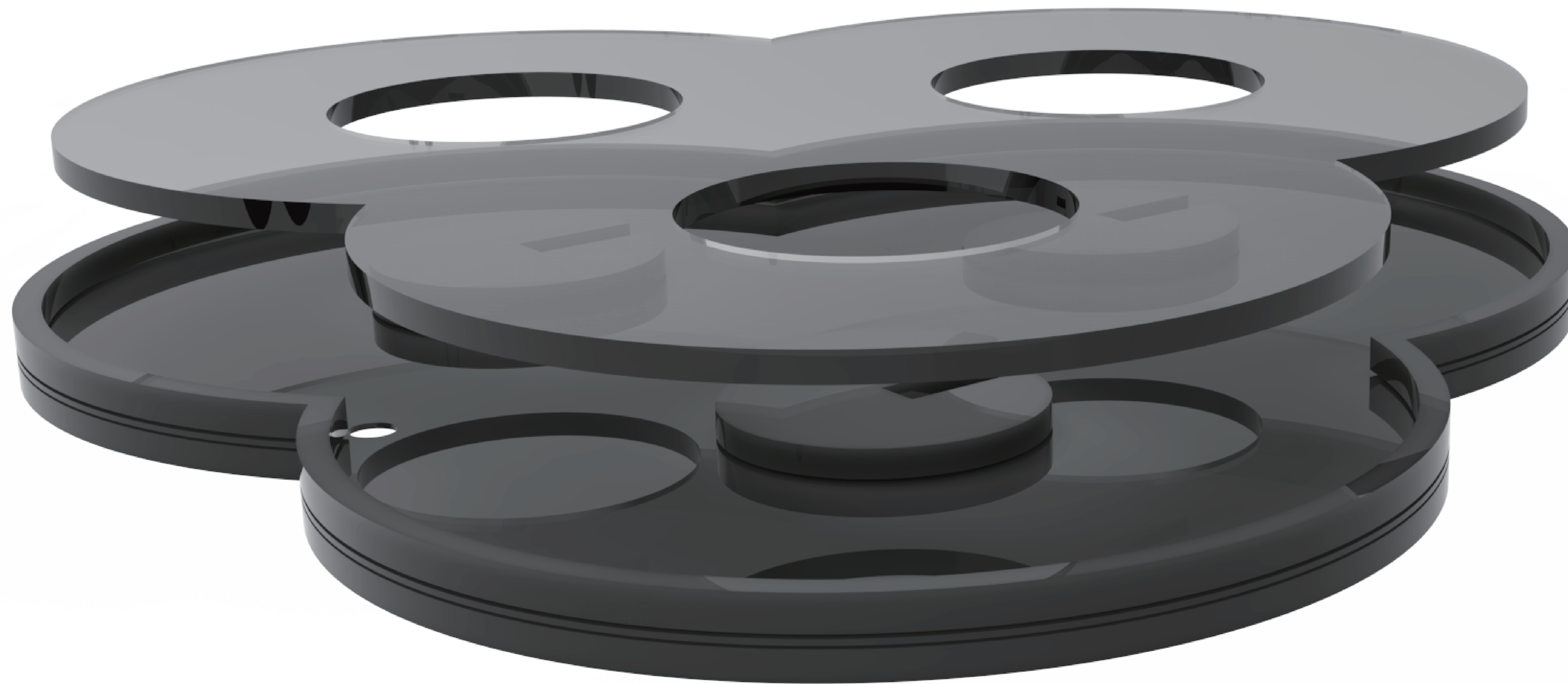
Fourth. Attach 3part with potentiometer
to 4.6.7part with strong adhesive



Fifth. Attach ws2818b to the edge of 3.4.6.7(red area) using a strong adhesive



Sixth. Insert the cut acrylic plate into the combined 3.4.6.7 and fix it with glue gun.



Seventh. Insert 2part into the potentiometer's control part
and fix it with glue glue



Eighth. Cover part 1 and fix with strong adhesive finish

