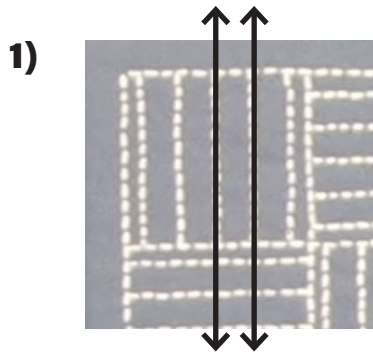


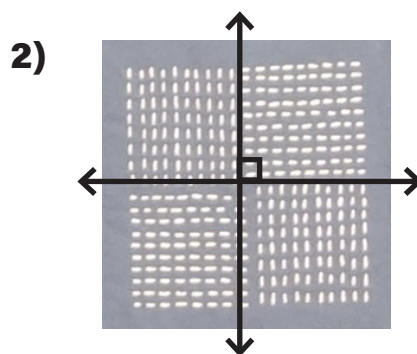
Sashiko Mathematics

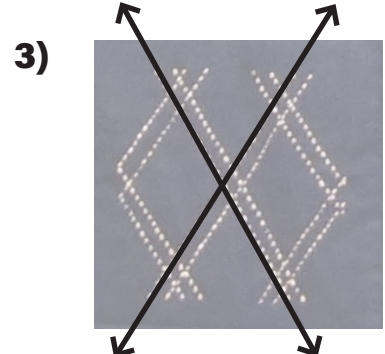
Parallel, Perpendicular and Intersecting Lines

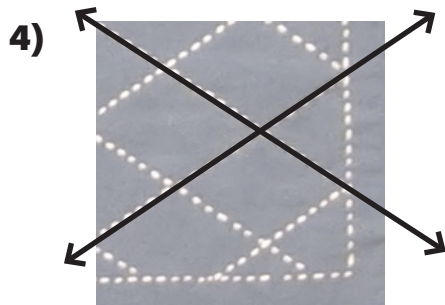
Part A

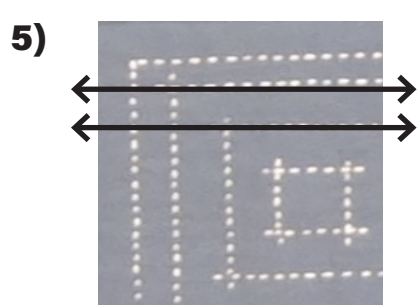
Write each pair of lines as parallel, perpendicular or intersecting.

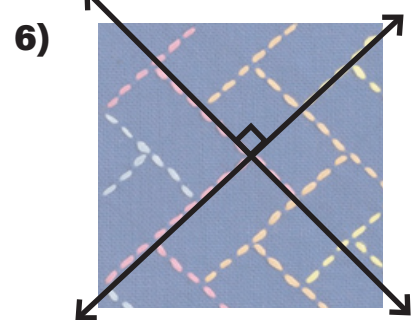












Part B

Trace the following lines with a pen or marker.

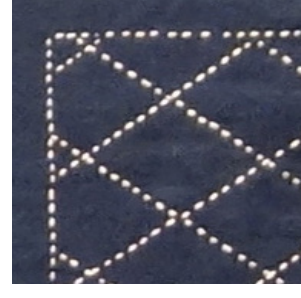
1) parallel lines



2) perpendicular lines



3) intersecting lines

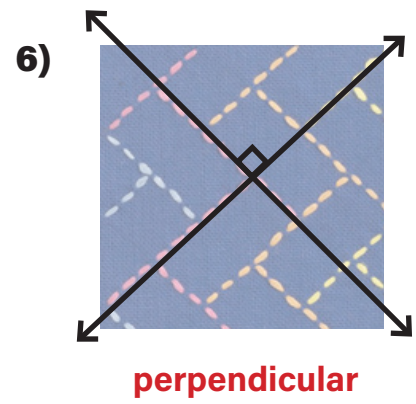
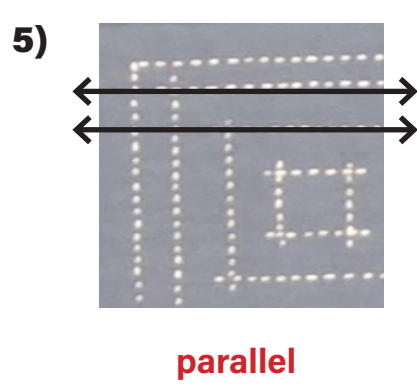
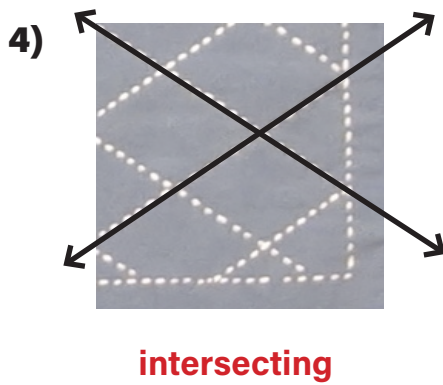
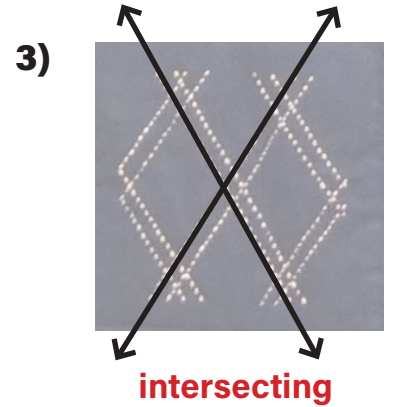
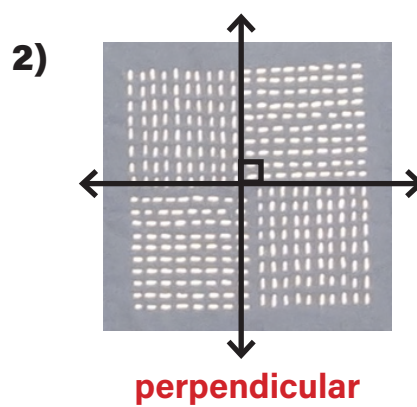
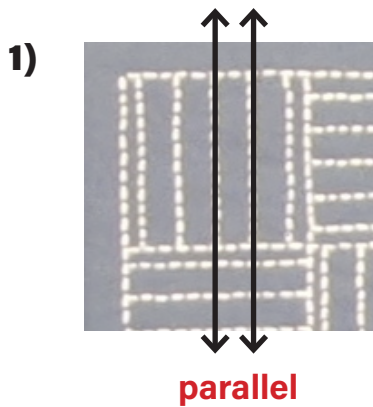


Sashiko Mathematics

Parallel, Perpendicular and Intersecting Lines

Part A

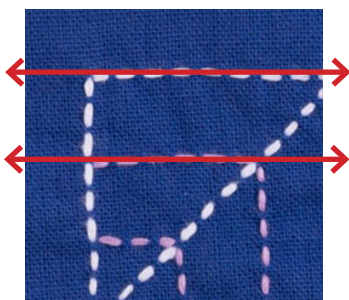
Write each pair of lines as parallel, perpendicular or intersecting.



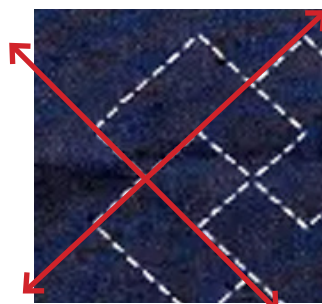
Part B

Trace the following lines with a pen or marker.

1) parallel lines



2) perpendicular lines



3) intersecting lines

