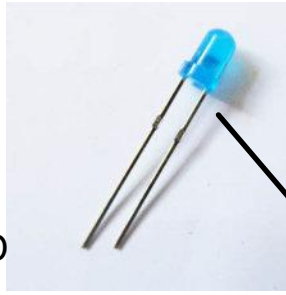


STEP ONE

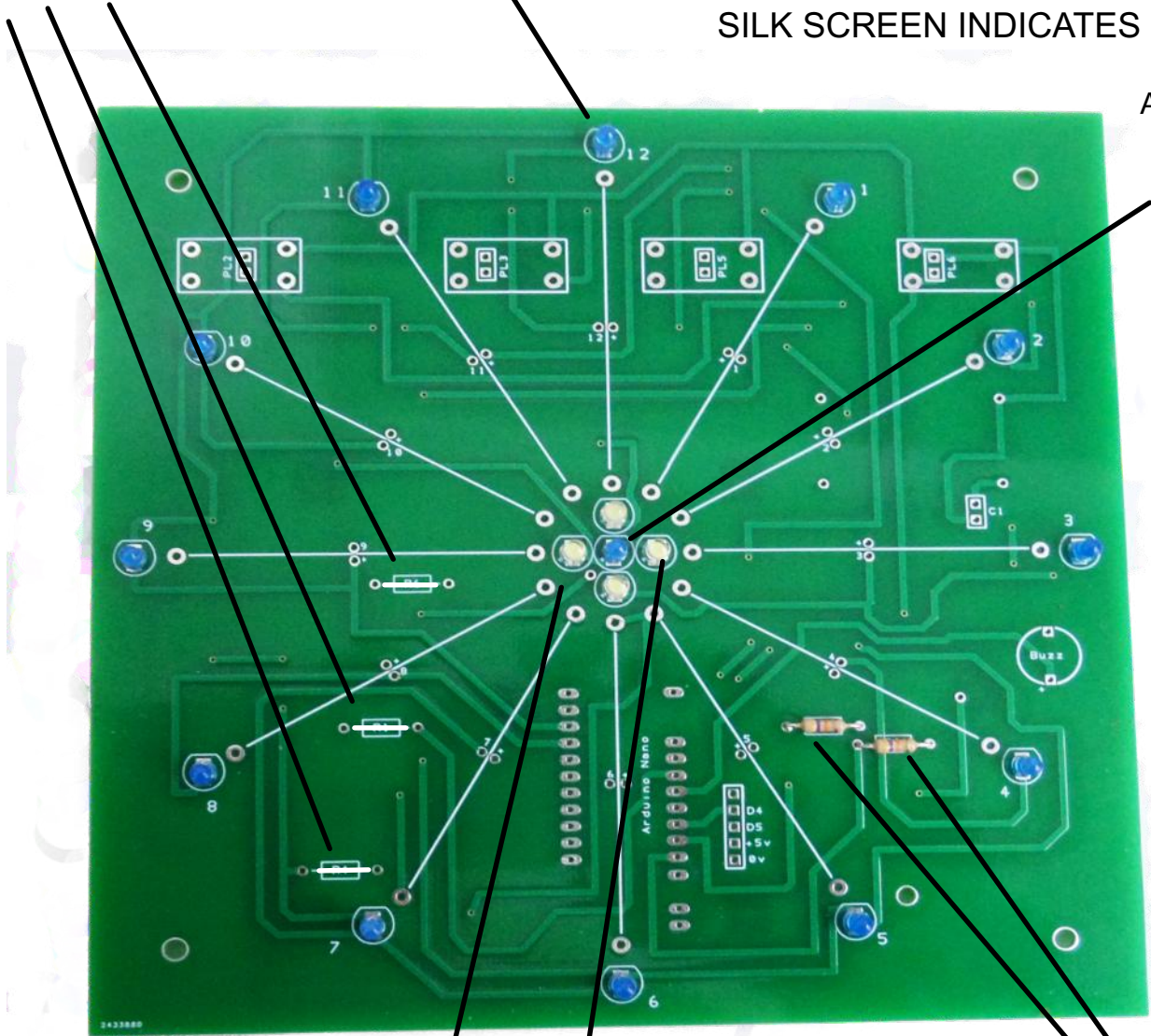
FACE OF PCB

IN THIS OPTION RESISTERS R1 R6 R4 ARE NOT REQUIRED
LINK - USE LED OFFCUTS



FOR ALL 17 LEDS

SHORT LEAD / FLAT SIDE
FACE UP AS PCB
SILK SCREEN INDICATES



ALARM LED

SINGLE MINUTES LEDS

RESISTERS
2 X 10K



NOTE - DON'T DISCARD THE LED LEADS AFTER CUTTING NEEDED IN STEP 2