

# STEP THREE

REAR OF PCB

ARDUINO NANO

MICRO SOCKET  
FACE MIDDLE  
OF PCB

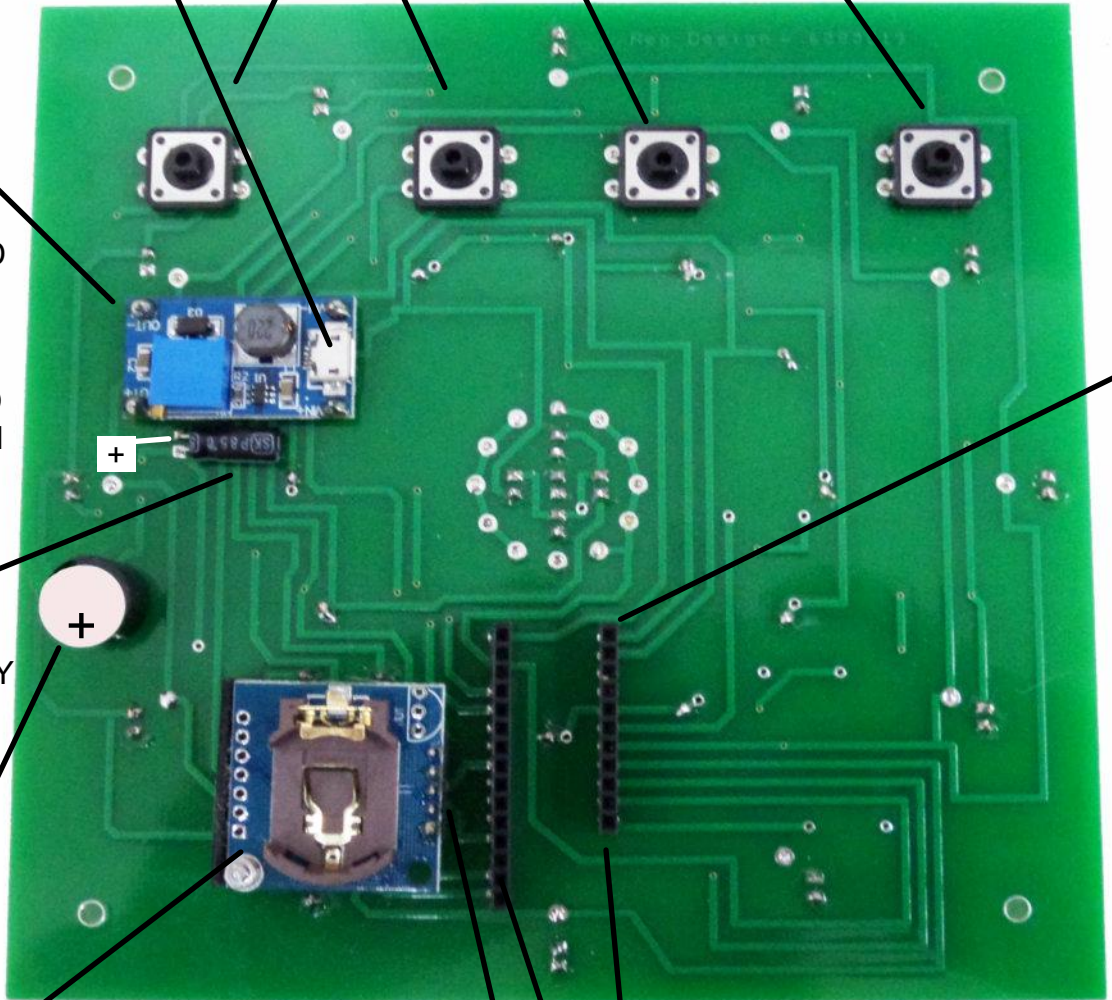
FIT THREE PUSH BUTTONS AND SOLDER



POWER MODULE  
FIT PINS FIRST AND  
SOLDER. MOUNT  
MODULE ON PINS  
AND SOLDER.  
DON'T ADJUST AND  
ENSURE POWER IN  
IS FACING THE  
CENTRE OF PCB

FIT CAPACITOR  
25MFD 25V  
OBSERVE POLARITY

SOUNDER  
MAKES SURE THE  
+ IS FACING DOWN



IF YOU ARE USING HOLDERS FOR NANO  
AND CLOCK CUT THE STRIP AND NOTE  
PINS 3-13-14 HAVE BEEN REMOVED

THE CLOCK MODULE REQUIRES A 5 PIN  
STRIP TO BE SOLDERED IN.  
AFTER SOLDERING REMOVE THE  
PLASTIC STRIP.

MOUNT CLOCK WITH SUPPLIED  
BRACKET USING SUPPLIED NUT  
AND BOLT

FIT BATTERY.

