

3D PRINTABLE MODEL

FDM process optimized:

- no print support needed
- small printers: 15x15 cm bed sizes are OK
- optimal for 0.4 mm nozzles
- recommended printing speed: 50 mm/s
- print layer height: 0.2mm (best detail: 0.15mm)

Assembly optimized:

- two-element print - just a drop of glue needed

Compatibility:

- this model is a part of "Euroreprap Railroad Collection" which is a system consisting of trains, tracks and other railway objects.

EUROREPRAP
RAILROAD
COLLECTION

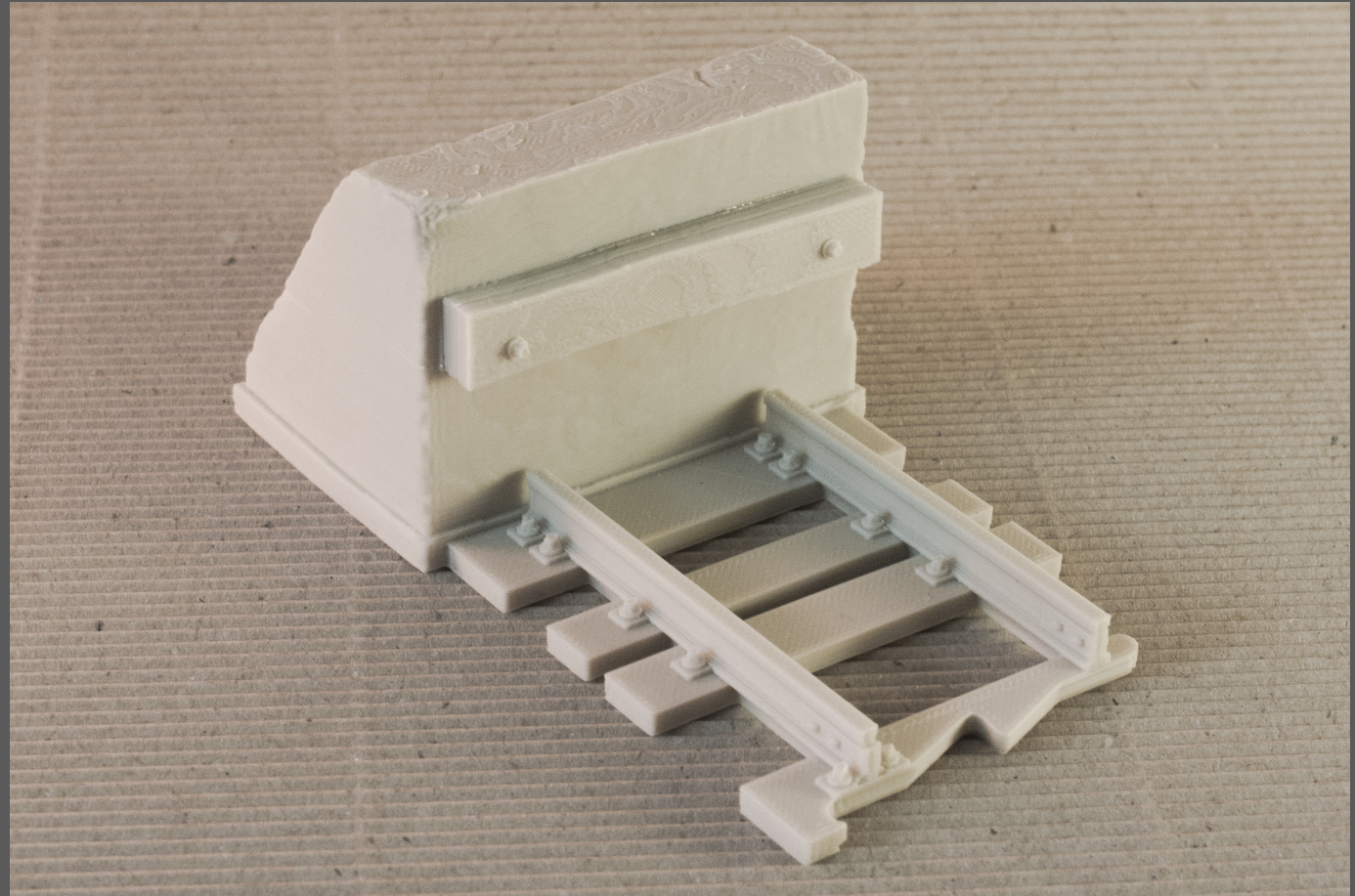


Availability:

- www.ponoko.com/showroom/EUROREPRAP-EU

BUFFER STOP TRACK Euroreprap Railroad System

03.2015



EUROREPRAP.EU

E-mail and website
contact@euroreprap.eu
www.euroreprap.eu

3D PRINTABLE MODEL

BUFFER STOP TRACK Euroreprap Railroad System

EUROREPRAP.EU

03.2015

