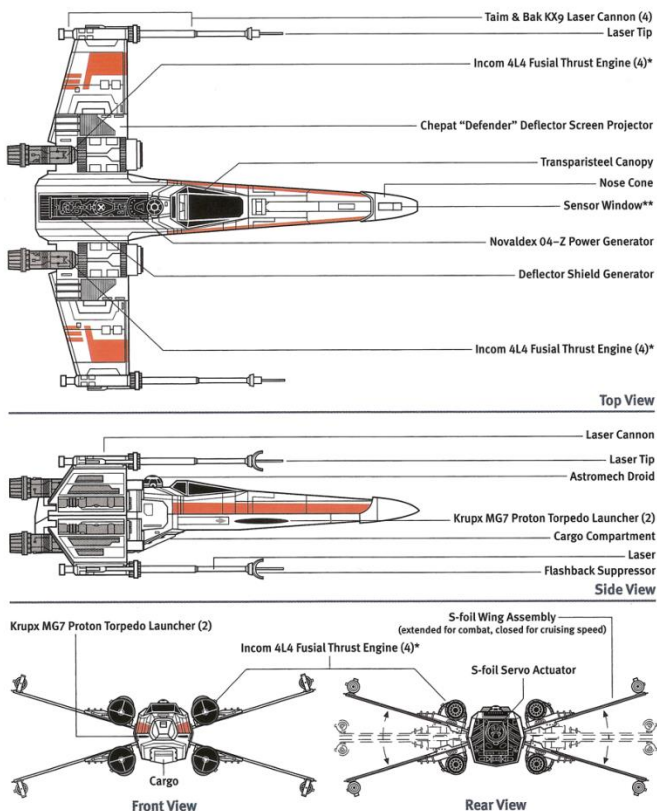
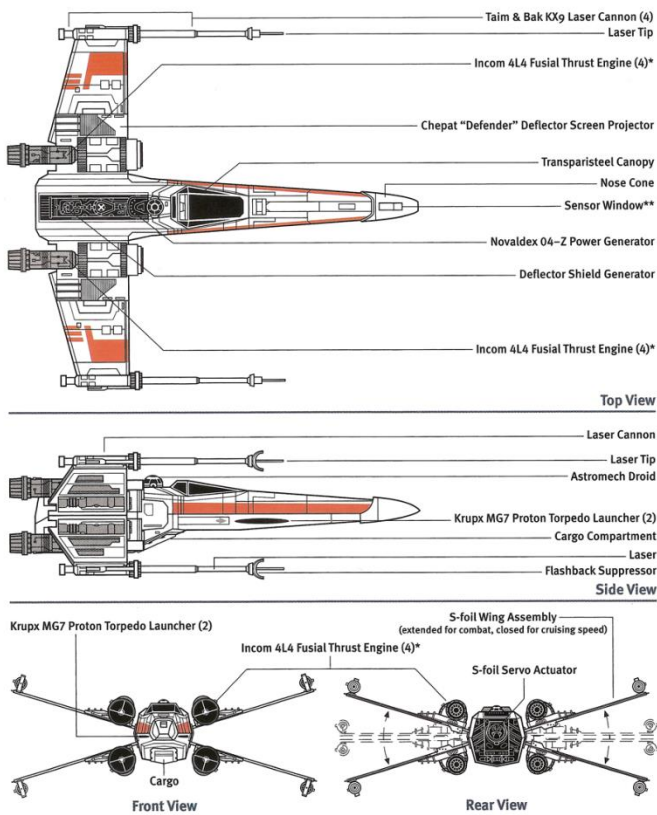


[http://photobucket.com/gallery/http://s1281.photobucket.com/user/Fastballsolo/media/4CFC75C0-F03D-4669-B0FD-C864799C70DB\\_zpszfwdkeax.jpg.html](http://photobucket.com/gallery/http://s1281.photobucket.com/user/Fastballsolo/media/4CFC75C0-F03D-4669-B0FD-C864799C70DB_zpszfwdkeax.jpg.html)



[http://i730.photobucket.com/albums/ww307/Agent239/Star%20Wars/X-wing\\_schematics-1.png](http://i730.photobucket.com/albums/ww307/Agent239/Star%20Wars/X-wing_schematics-1.png)

\*Alternate Configurations May Use Incom 4L4 Fusial Thrust Engines.  
 \*\* Houses Caribari Transceiver Package with Fabritech Ato-6d "Lock Track" Full-spectrum Transceiver, Melihat "Multi Imager" Dedicated Energy Receptor, Tana Iru Electro-photo Receptor and Fabritech Anq 3.6 Sensor Computer. Alternate Configuration Typically Combines Long Range Fabritech ARS-5d Units with Long Range PTSA RPA-9 Unit and Short Range PTAG RPA-7u Unit.

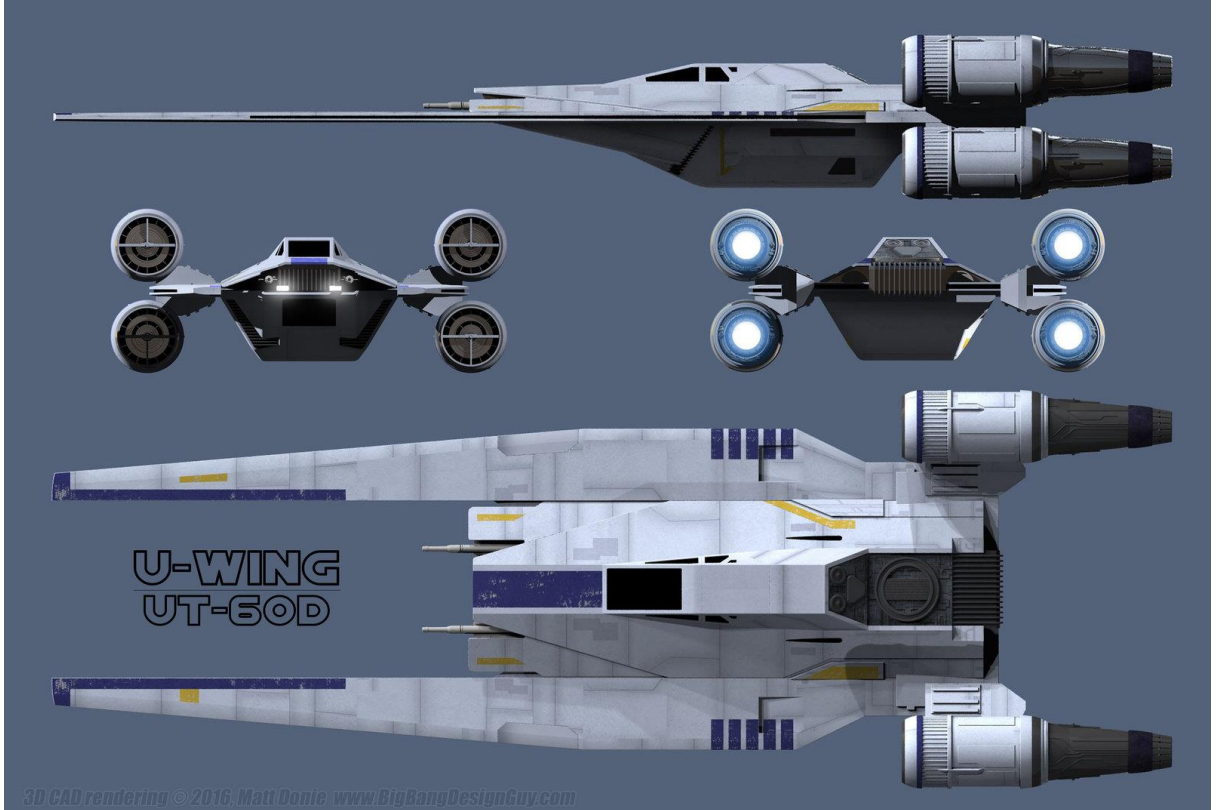


\*Alternate Configurations May Use Incom 4L4 Fusial Thrust Engines.

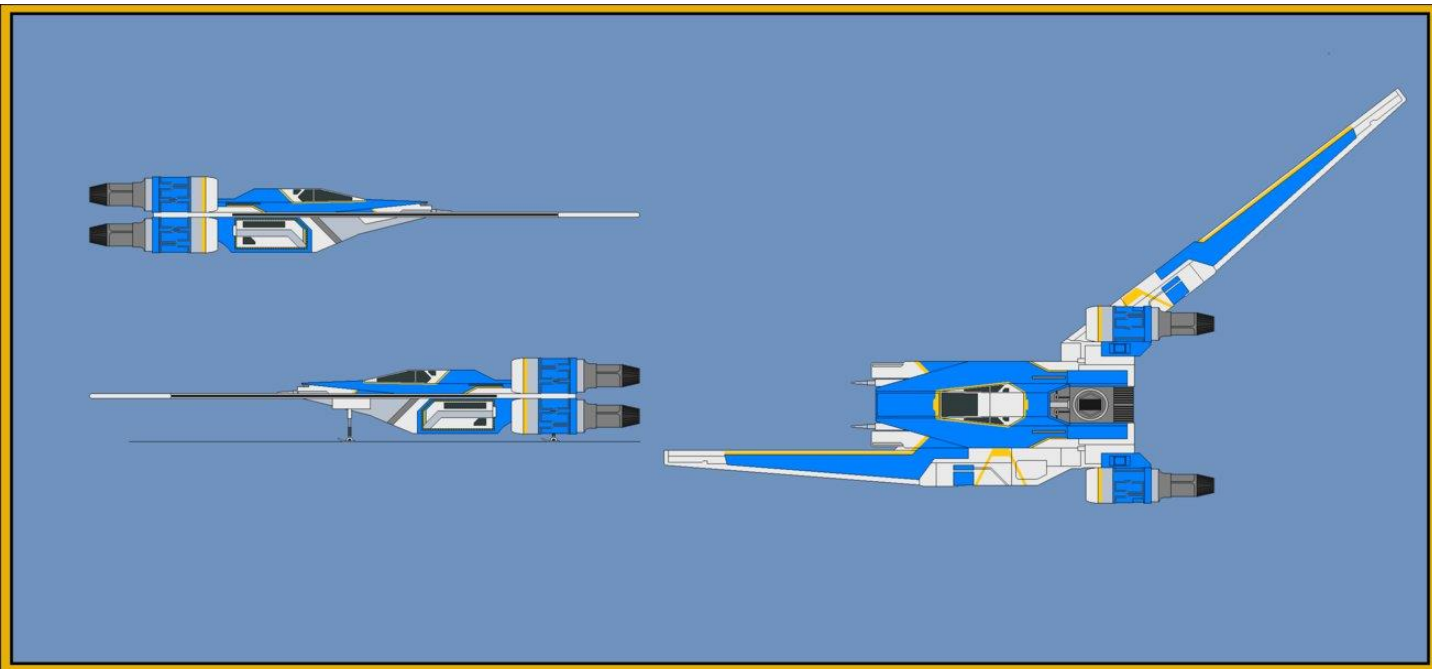
\*\*Houses Cabaret Transceiver Package with Fabritech ARS-5d "Dark Track" full-spectrum Transceiver, Melhat "Multi Imager" Dedicated Energy Receiver, Tona Iro Electro-photo Receptor and Fabritech Arng 3.6 Sensor Computer. Alternate Configuration Typically Combines Long Range Fabritech ARS-5d Units with Long Range PTSA RPA-9r Unit and Short Range PTAG RPA-7u Unit.

[http://pre10.deviantart.net/e0e3/th/pre/f/2016/346/8/6/ut\\_60d\\_u\\_wing\\_transport\\_gunship\\_ortho\\_1\\_new\\_by\\_unusualsuspex-darf4ww.jpg](http://pre10.deviantart.net/e0e3/th/pre/f/2016/346/8/6/ut_60d_u_wing_transport_gunship_ortho_1_new_by_unusualsuspex-darf4ww.jpg)



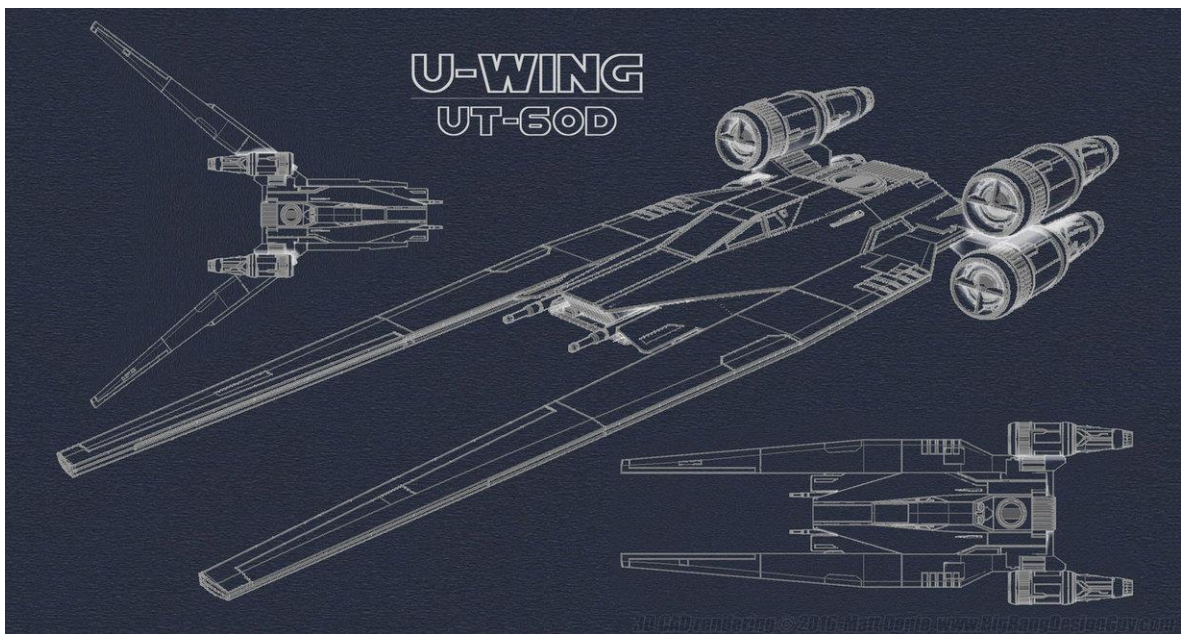


[http://img00.deviantart.net/98d0/i/2016/280/e/6/u\\_wing\\_schematics\\_by\\_ravendeviant-dak92nh.jpg](http://img00.deviantart.net/98d0/i/2016/280/e/6/u_wing_schematics_by_ravendeviant-dak92nh.jpg)

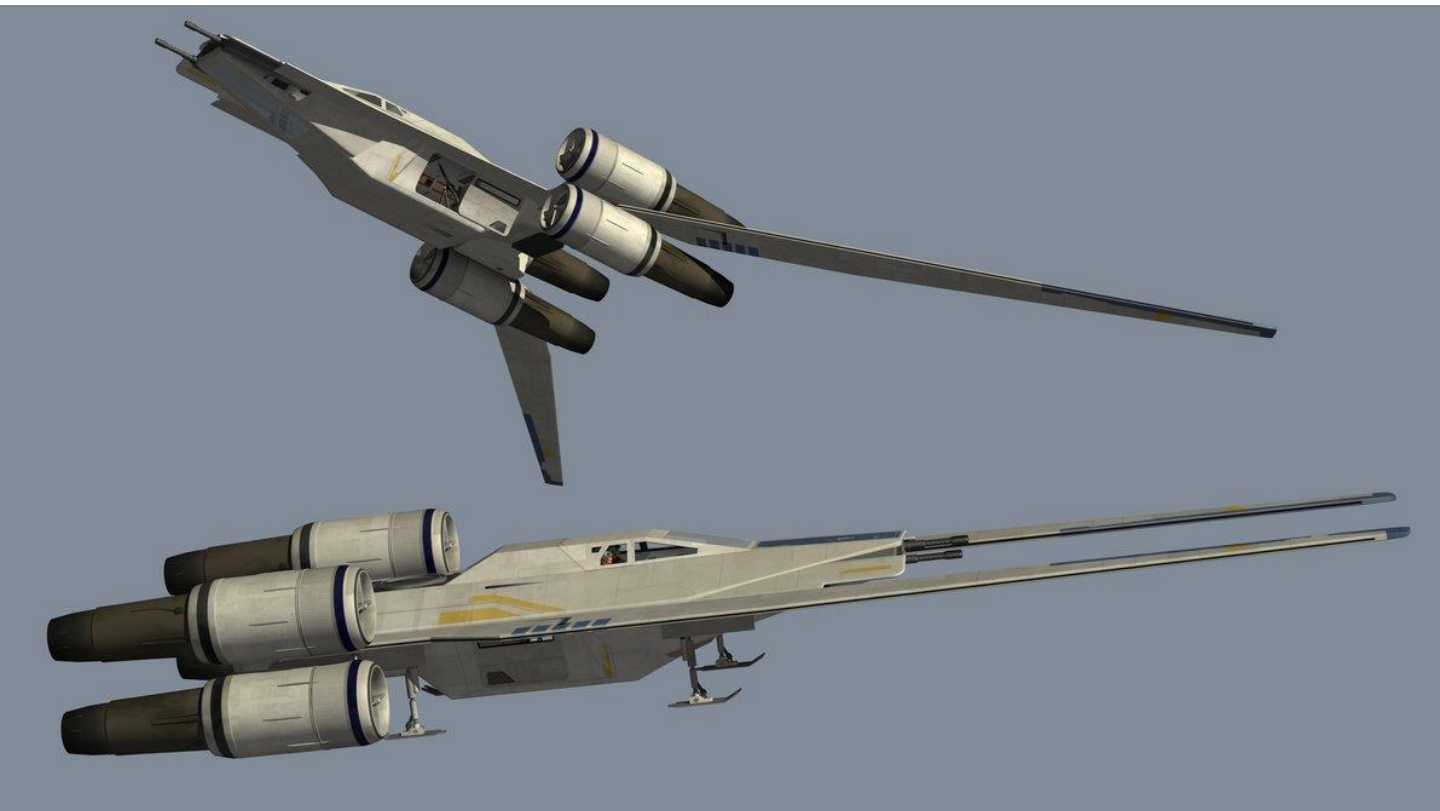


[http://pre02.deviantart.net/5f02/th/pre/f/2017/008/2/9/ut\\_60d\\_u\\_wing\\_by\\_wingzero\\_01\\_custom-dauoo7h.png](http://pre02.deviantart.net/5f02/th/pre/f/2017/008/2/9/ut_60d_u_wing_by_wingzero_01_custom-dauoo7h.png)





[http://www.thatsonmoon.info/uploads/2/5/4/1/25412903/u-wing-ut-60d-blueprint-style-image-by-ravendeviant-dak8xx6\\_orig.jpg](http://www.thatsonmoon.info/uploads/2/5/4/1/25412903/u-wing-ut-60d-blueprint-style-image-by-ravendeviant-dak8xx6_orig.jpg)



[http://pre01.deviantart.net/1efb/th/pre/f/2016/345/9/a/u\\_wing\\_by\\_emigepa-darb3ip.jpg](http://pre01.deviantart.net/1efb/th/pre/f/2016/345/9/a/u_wing_by_emigepa-darb3ip.jpg)

**DARKGRAZI**

**ROGUE ONE**



[http://media.moddb.com/images/members/1/822/821766/  
UWING\\_ROGUEONE.jpg](http://media.moddb.com/images/members/1/822/821766/UWING_ROGUEONE.jpg)

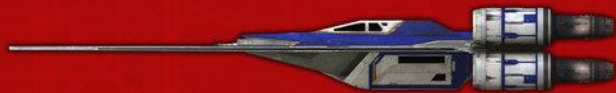
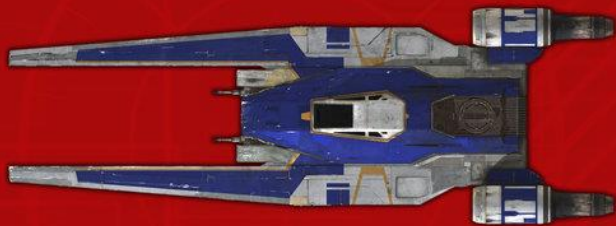


[http://bandai-hobby.net/sw/products\\_img/u\\_wingfighter\\_tiestriker\\_01.jpg](http://bandai-hobby.net/sw/products_img/u_wingfighter_tiestriker_01.jpg)

[http://pre10.deviantart.net/e0e3/th/pre/f/2016/346/8/6/ut\\_60d\\_u\\_wing\\_transport\\_gunship\\_ortho\\_\\_1\\_\\_new\\_\\_by\\_unusualsuspex-darf4ww.jpg](http://pre10.deviantart.net/e0e3/th/pre/f/2016/346/8/6/ut_60d_u_wing_transport_gunship_ortho__1__new__by_unusualsuspex-darf4ww.jpg)

## INCOM UT-600 U-WING TRANSPORT/GUNSHIP

THE UT-600, ALSO KNOWN AS THE U-WING, WAS A TRANSPORT/GUNSHIP MODEL MANUFACTURED BY INCOM CORPORATION AND USED BY THE ALLIANCE TO RESTORE THE REPUBLIC DURING THE GALACTIC CIVIL WAR. USED TO DROP TROOPS INTO BATTLE, AND PROVIDE COVER FIRE FOR THEM. U-WINGS FEATURED SIDE DOORS WHICH COULD ALSO BE USED AS A MOUNT POINT FOR A BLASTER CANNON. THE WINGS OF THE U-WING WERE VARIABLE GEOMETRY AND COULD BE POSITIONED FORWARD-FACING FOR LANDING AND HANGARAGE OR SWEEP BACK FOR ATMOSPHERIC FLIGHT. THE U-WING PARTICIPATED IN THE BATTLE OF SCARIF, IN WHICH IT SHUTTLED TROOPS TO THE PLANET IN ORDER TO CARRY OUT THE THEFT OF THE DEATH STAR PLANS. THE U-WING ALSO SAW ACTION DURING THE BATTLE OF JAKKU AS A PART OF THE NEW REPUBLIC FLEET.



A UT-600 U-WING OF THE REBEL ALLIANCE SEEN HERE IN LANDING MODE. THE FOLDS BEING IN THE FORWARD POSITION.







[https://disneynerd.files.wordpress.com/2017/01/img\\_4557.jpg](https://disneynerd.files.wordpress.com/2017/01/img_4557.jpg)